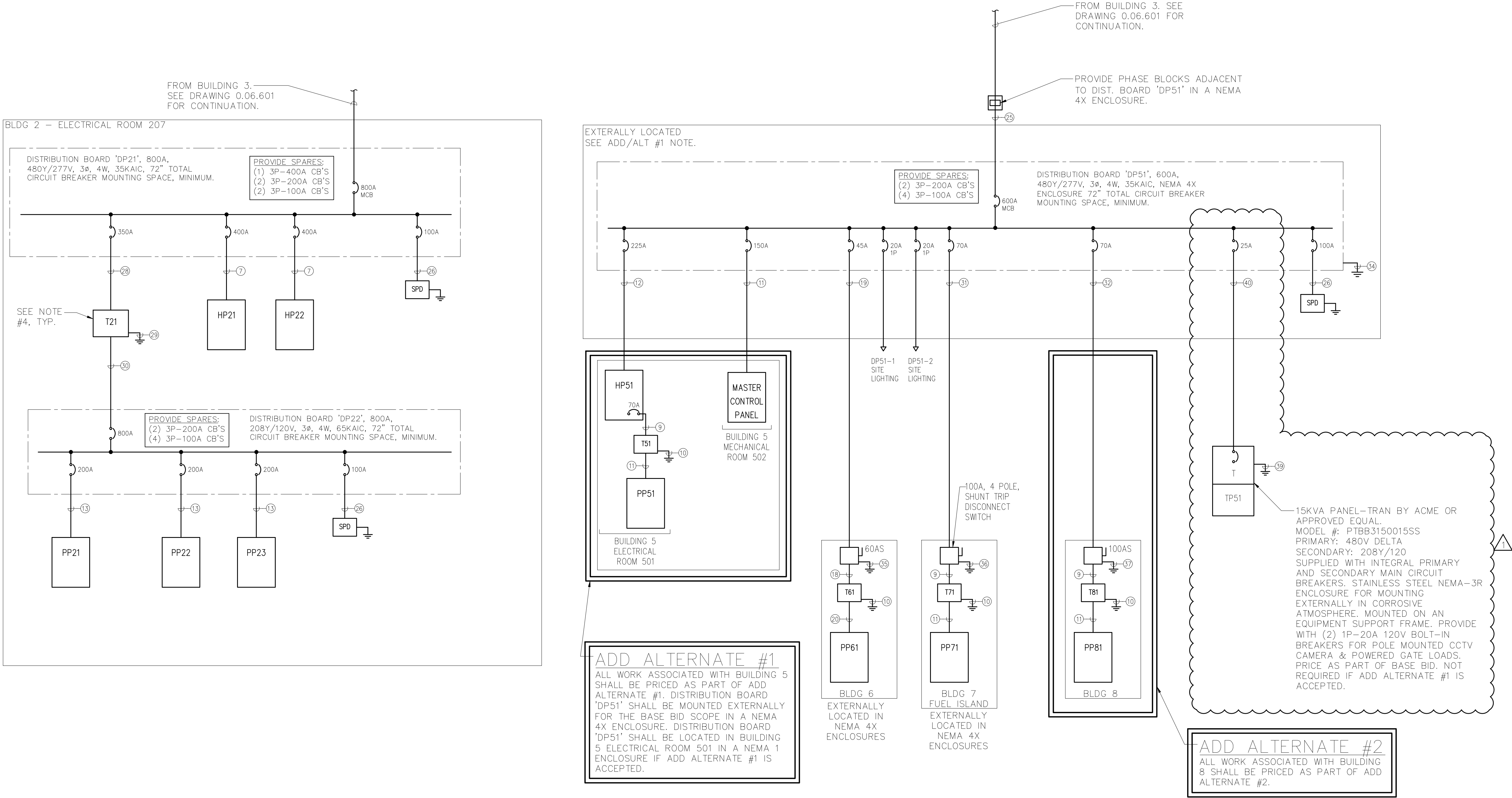


FILE NAME: I:\Projects\MEG\NMEG0050.00.dwg 0.06.601-2-3-4.dwg PLOT TIME: Wed, 27 Nov 2019 - 3:31pm LAST SAVE: Wed, 27 Nov 2019 - 3:31pm BY: millis

- NOTES:
- 1.) ALL CIRCUIT BREAKERS ARE 3 POLE, U.O.N.
2.) ADJUST TRANSFORMER TAPS TO COMPENSATE FOR VOLTAGE DROP AS INDICATED IN SPECIFICATIONS.
- WIRING/CONDUIT LEGEND:
- SEE DRAWING 0.06.601 FOR WIRING/CONDUIT LEGEND.



1

ELECTRICAL ONE-LINE DIAGRAM CONTINUED

SCALE: NONE

WARNING - IT IS A VIOLATION OF NEW YORK STATE EDUCATIONAL LAW, SECTION 7209.2, FOR ANY PERSON, UNLESS HE IS ACTING UNDER THE DIRECTION OF A LICENSED PROFESSIONAL ENGINEER OR LAND SURVEYOR, TO ALTER THIS DOCUMENT IN ANY WAY. IF ALTERED, THE ALTERING PERSON SHALL COMPLY WITH THE REQUIREMENTS OF NEW YORK EDUCATIONAL LAW, SECTION 7209.2

COPYRIGHT © 2019, McLAREN ENGINEERING GROUP

CONSULTANTS ARCHITECT

STV 100 Years
STV Architects, P.C.
225 Park Avenue South
New York, NY 10003
(212) 777-4400 FAX: (212) 473-2780
www.stvinc.com

MEP ENGINEER

OLA Consulting Engineers
50 Broadway,
Hawthorne, NY 10532
914.747.2800
8 West 38th Street,
Suite 601
New York, NY 10018
646.648.4110
ola.com NMEG0050.00

FACILITIES CONSULTANT

Gannett Fleming

LANDSCAPE ARCHITECT

IQ
Imbiano-Quigley
Landscape Architects
31 Monmouth Ave., 7th Floor
White Plains, New York 10601
admin@iqlandscape.com
(914) 232-6090

PROJECT

COUNTY OF ROCKLAND
CAPITAL PROJECT NO. 1307
HIGHWAY DEPARTMENT /
EMERGENCY OPERATIONS FACILITY
COUNTY OF ROCKLAND, NEW YORK

McLaren ENGINEERING GROUP
applied ingenuity
M. G. McLaren Engineering
and Land Surveying P.C.
530 Chestnut Ridge Road, Woodcliff Lake, NJ 07677
T: 201.775.6000 F: 201.746.8522 www.mgmclaren.com

SHEET NAME

ELECTRICAL ONE-LINE
DIAGRAM CONTINUED

1	11/27/19	ADDENDUM 07	VB
No.	DATE	REVISION	BY

PROJECT NO. 130439
SCALE As indicated
DATE OCTOBER 30, 2019
DRAWN BY CT
CHECKED BY ML
APPROVED BY DS

ISSUED FOR BID SET
DRAWING NO. 0.06.602
OF SHTS