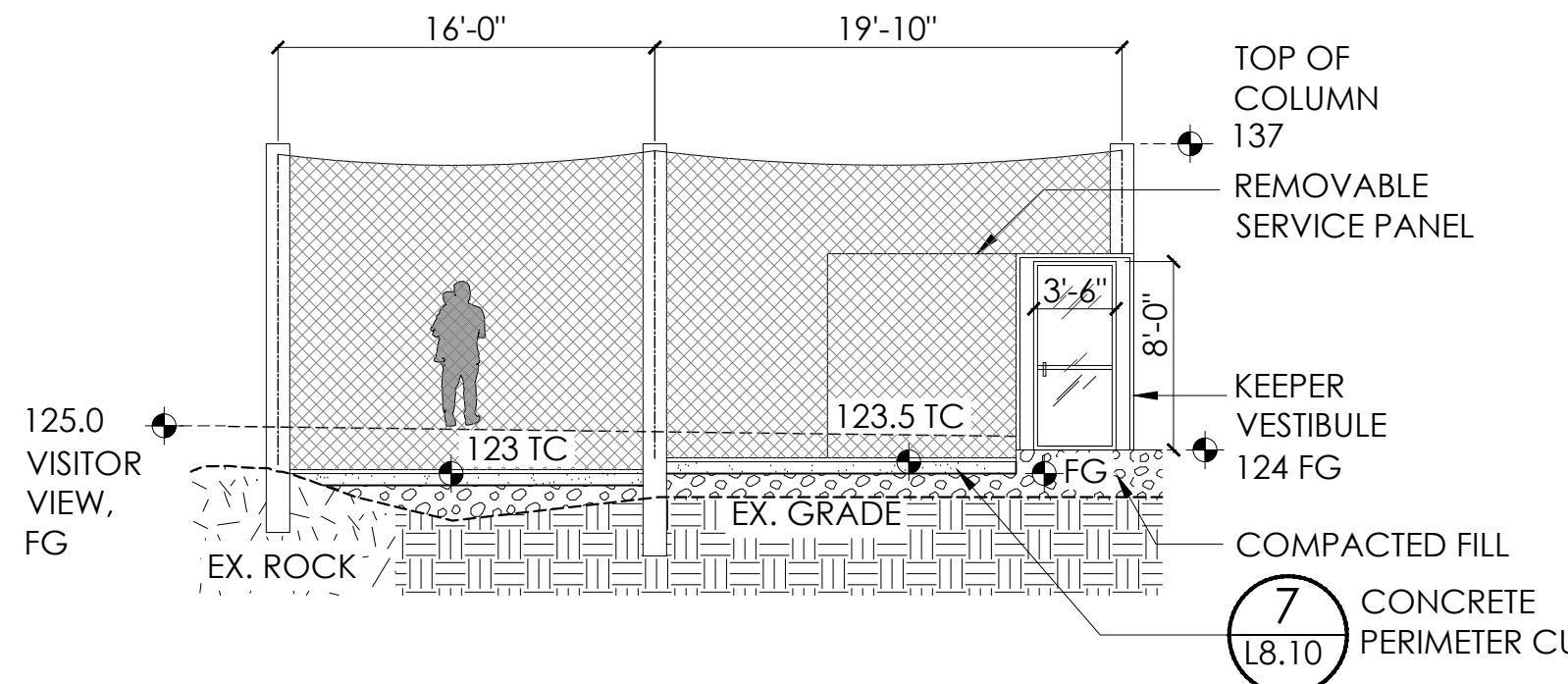
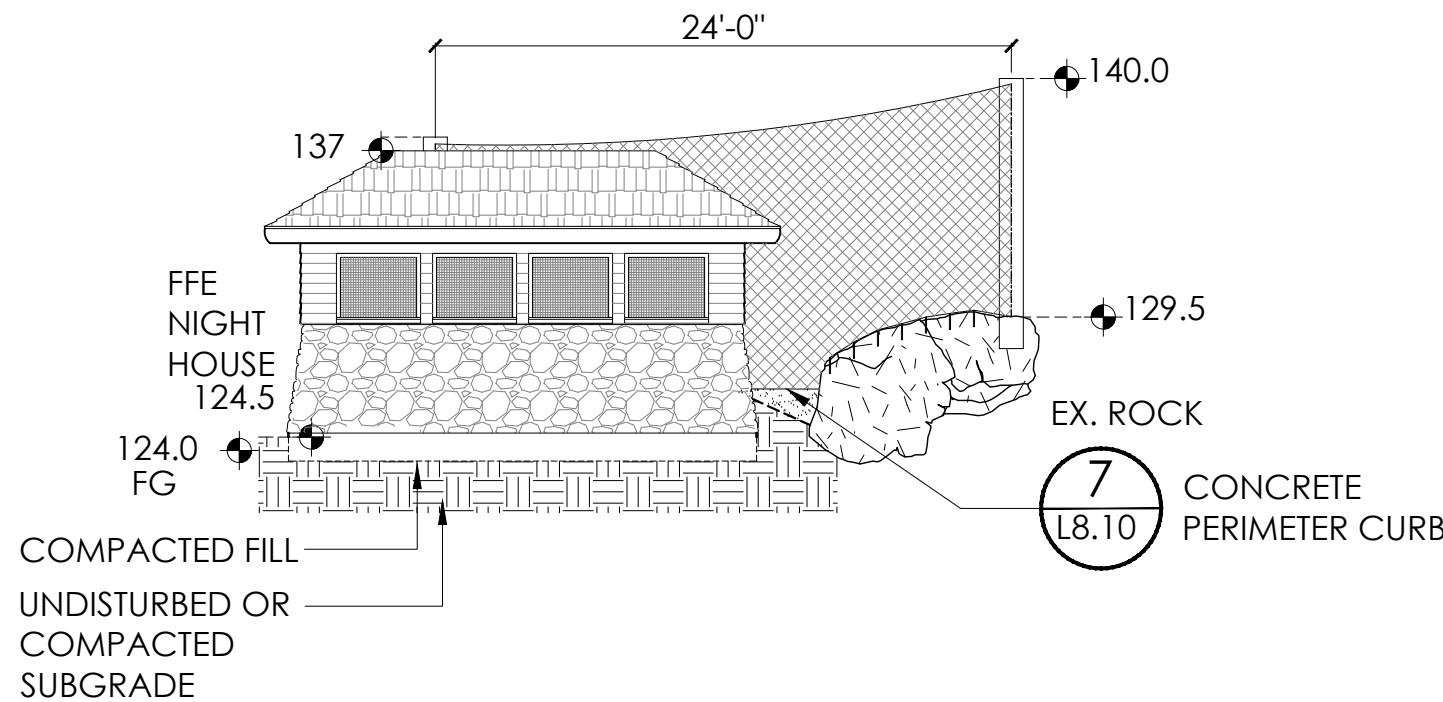


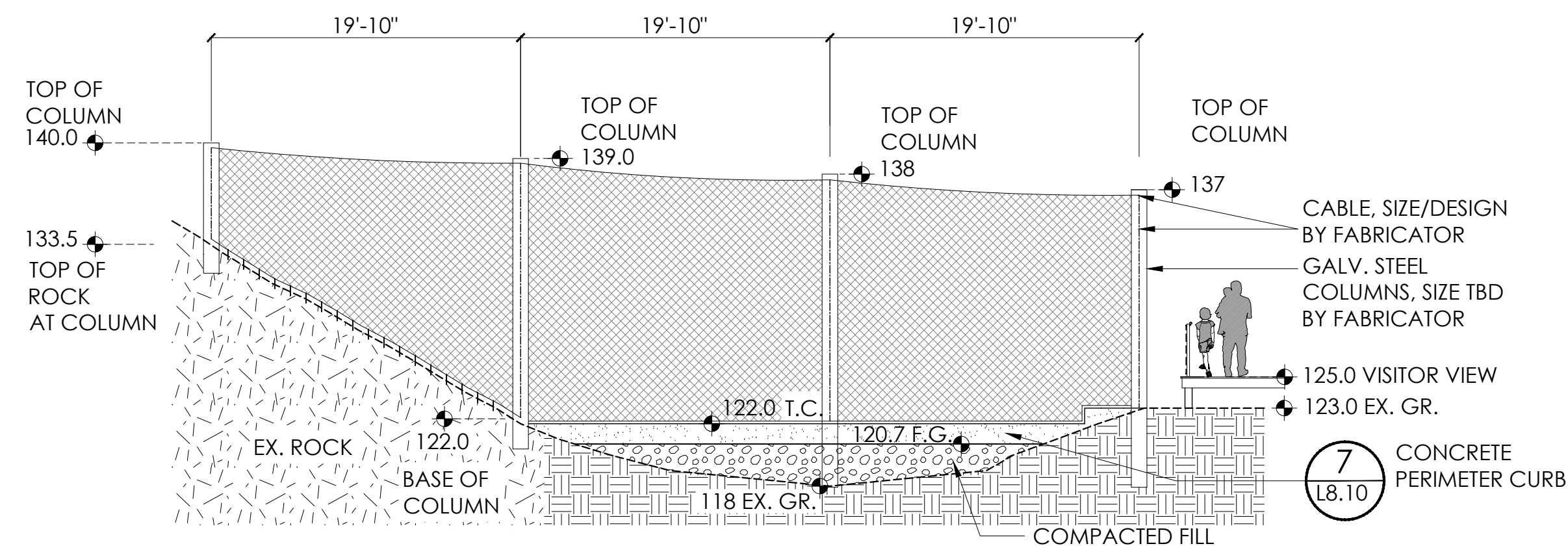
1 BOBCAT ENCLOSURE: PLAN
SCALE: 1/8" = 1'-0"



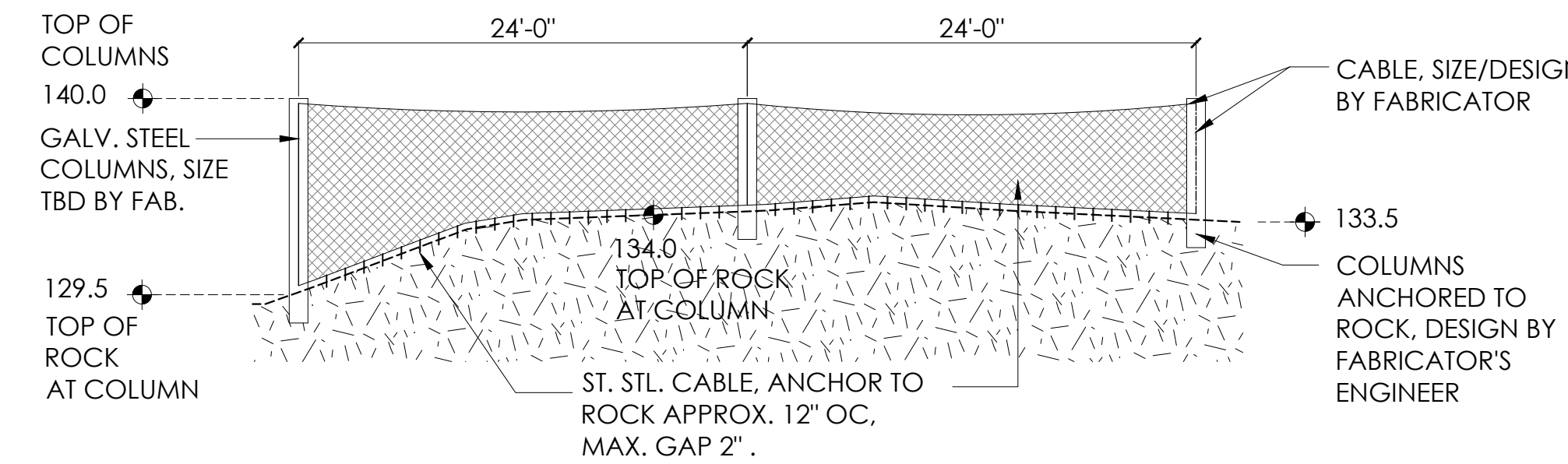
3 BOBCAT ENCLOSURE: NORTH ELEVATION (UNFOLDED)
SCALE: 1/4" = 1'-0"



4 BOBCAT ENCLOSURE: WEST ELEVATION
SCALE: 1/4" = 1'-0"



2 BOBCAT ENCLOSURE: EAST ELEVATION (UNFOLDED)
SCALE: 1/4" = 1'-0"



5 BOBCAT ENCLOSURE: SOUTH ELEVATION
SCALE: 1/4" = 1'-0"

STRUCTURAL NOTES

Design Responsibility:

1. Design/Builder responsible for enclosure and foundations shall provide a code compliant structural design. The structural design shall be performed by a New York Registered Professional Engineer with at least five years of experience in the design of tensile structures and with the manufacturer's proposed product.

2. The drawings show a conceptual form intended to maximize the space under cover and provide all tensile elements inside of the enclosure. Final design of form, elevation, materials and methods shall be by the design/builder and reviewed and approved by the Client.

3. The Design Builder's Engineer of Record shall account for all loads from the code including those due to temperature, wind, prestressing, snow, self-weight and ice. It is recommended that the tensile structure and mesh surface be designed for drifted and sliding snow as well as ice as the radial ice thickness predicted by the building codes will effectively block the ability of the structure to shed snow that accumulates after an ice event. Wind load should also be considered with the presence of ice.

4. Visual impact of structure shall be minimized as much as possible while meeting structural performance requirements outlined in these notes. Engineering of columns may favor using metal with a higher wall thickness in order to minimizing overall diameter. A column diameter of $\pm 8"$ is preferred.

MESH FABRIC

1. TOP: NET'EM HAND-WOVEN STAINLESS STEEL MESH. OPENING SIZE 2" X 2, FINISH PLAIN, CABLE TYPE STANDARD.
2. SIDES FROM 3' UP: NET'EM HAND-WOVEN STAINLESS STEEL MESH. OPENING SIZE 1.5" X 1.5", FINISH BLACK OXIDE.
3. SIDES FROM GRADE TO 3': NET'EM HAND-WOVEN STAINLESS STEEL MESH. OPENING SIZE 1" X 1", FINISH BLACK OXIDE.

TRAILSIDE MUSEUMS AND ZOO

Palisades Parks Conservancy

Bear Mountain State Park
Bear Mountain, New York 10911



Kevin Lucas Malone R.A.
2 Lower Reservoir Road
Goshen New York 10924
p 845-234-3881 1545-360-5728
www.klmarchitect.com
e. info@klmarchitect.com



WARWICK OFFICE
17 RIVER STREET
WARWICK, NY 10990
Ph: (845) 986-7737
WWW.EP-PC.COM



BLAKE ENGINEERING PLLC
1898 COUNTY ROUTE 1, WESTTOWN, NY 10998
845-467-9207 MBLAKE@BLAKEENGINEERINGPLLC.COM



100% CONSTRUCTION DOCUMENTS

Coyle & Caron Inc.

Landscape Architects & Habitat Designers
236 PASADENA PLACE
ORLANDO, FL 32803
407-603-7039

Job #	0191
Project	ANIMAL HABITAT IMPROVEMENTS
Drawn By	SC, RK
Checked	SC
Date	02 April 2021
Scale	AS SHOWN

Drawing Title
Bobcat Enclosure

L6.10