

TRAILSIDE
MUSEUMS
AND ZOO

Palisades Parks Conservancy
Bear Mountain State Park
Bear Mountain, New York 10911



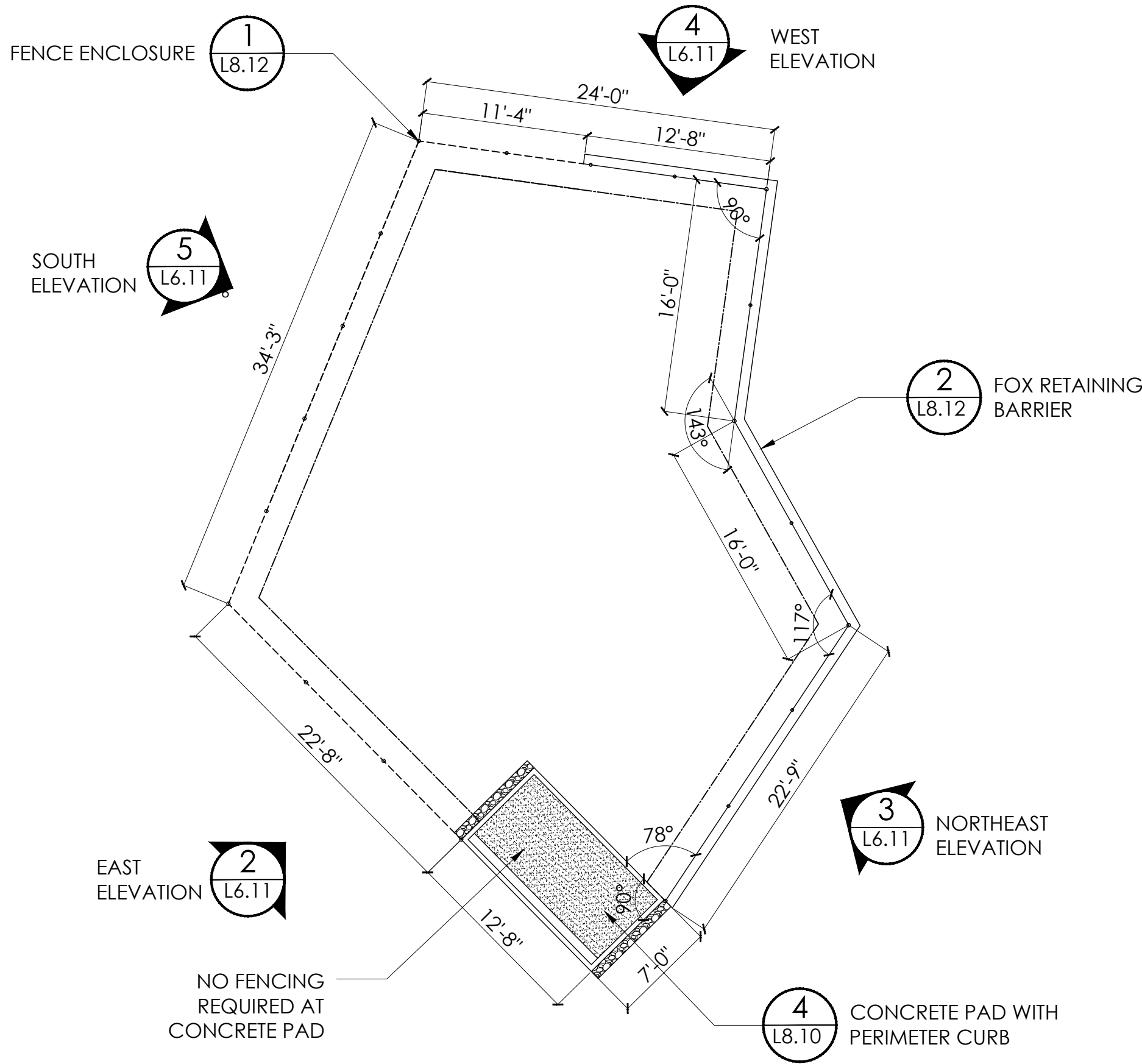
Kevin Lucas Malone R.A.
2 Lower Reservoir Road
Goshen New York 10924
p.845-234-3885 f.845-360-9720
www.klmArchitect.com
e. info@klmArchitect.com



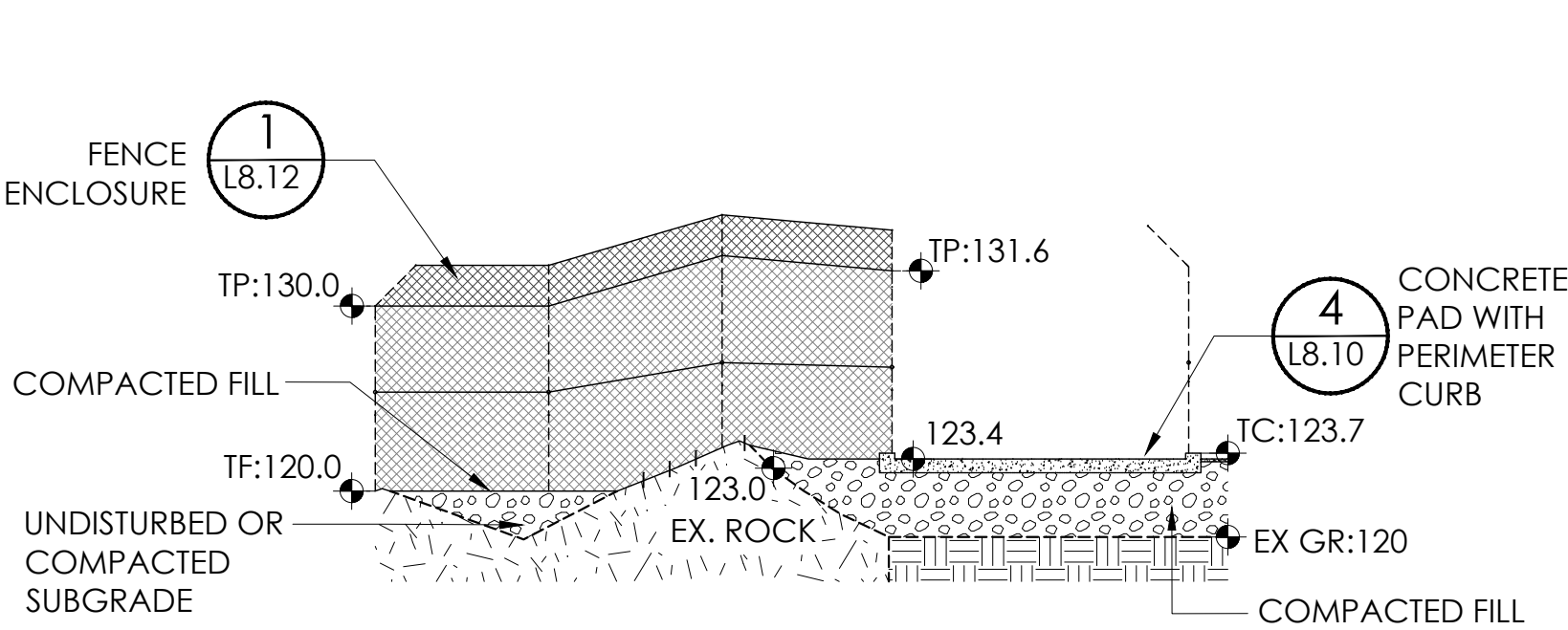
WARWICK OFFICE
17 RIVER STREET
WARWICK, NY 10996
Ph: (845) 986-7737
WWW.EP-PC.COM



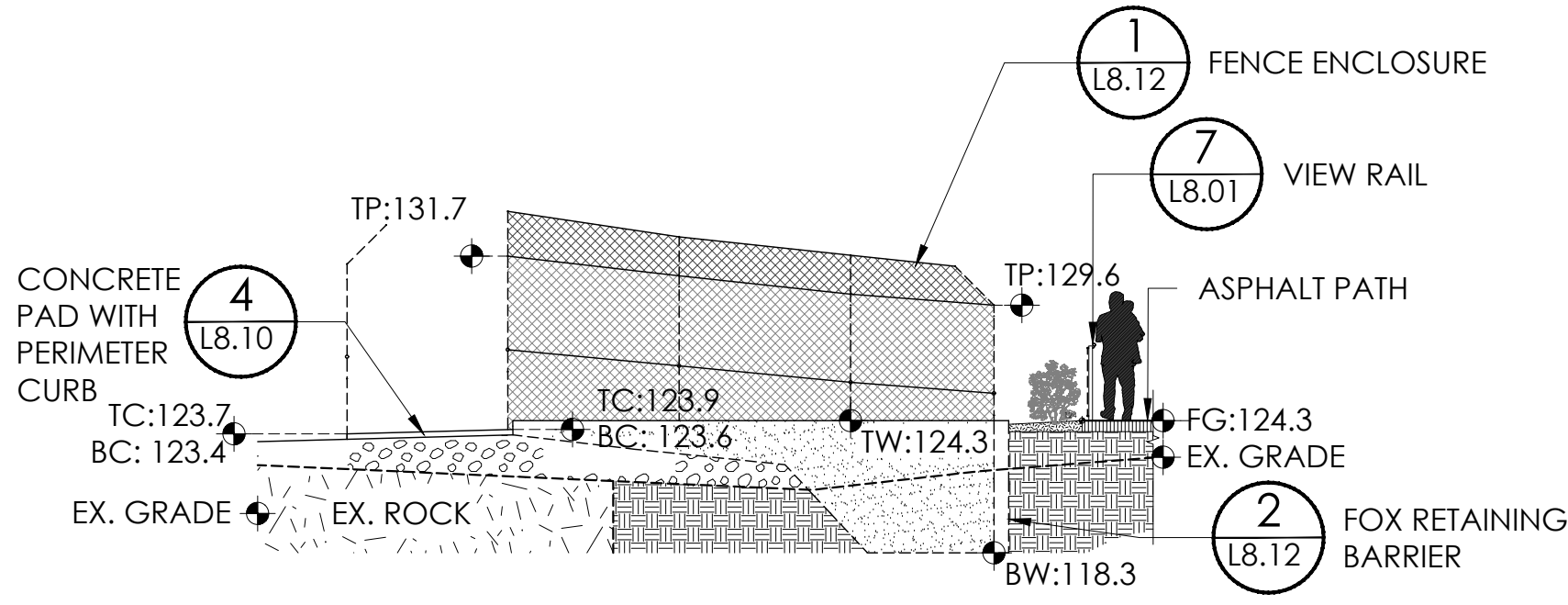
BLAKE ENGINEERING PLLC
1898 COUNTY ROUTE 1, WESTTOWN, NY 10998
845-467-9207 MBLAKE@BLAKEENGINEERINGPLLC.COM



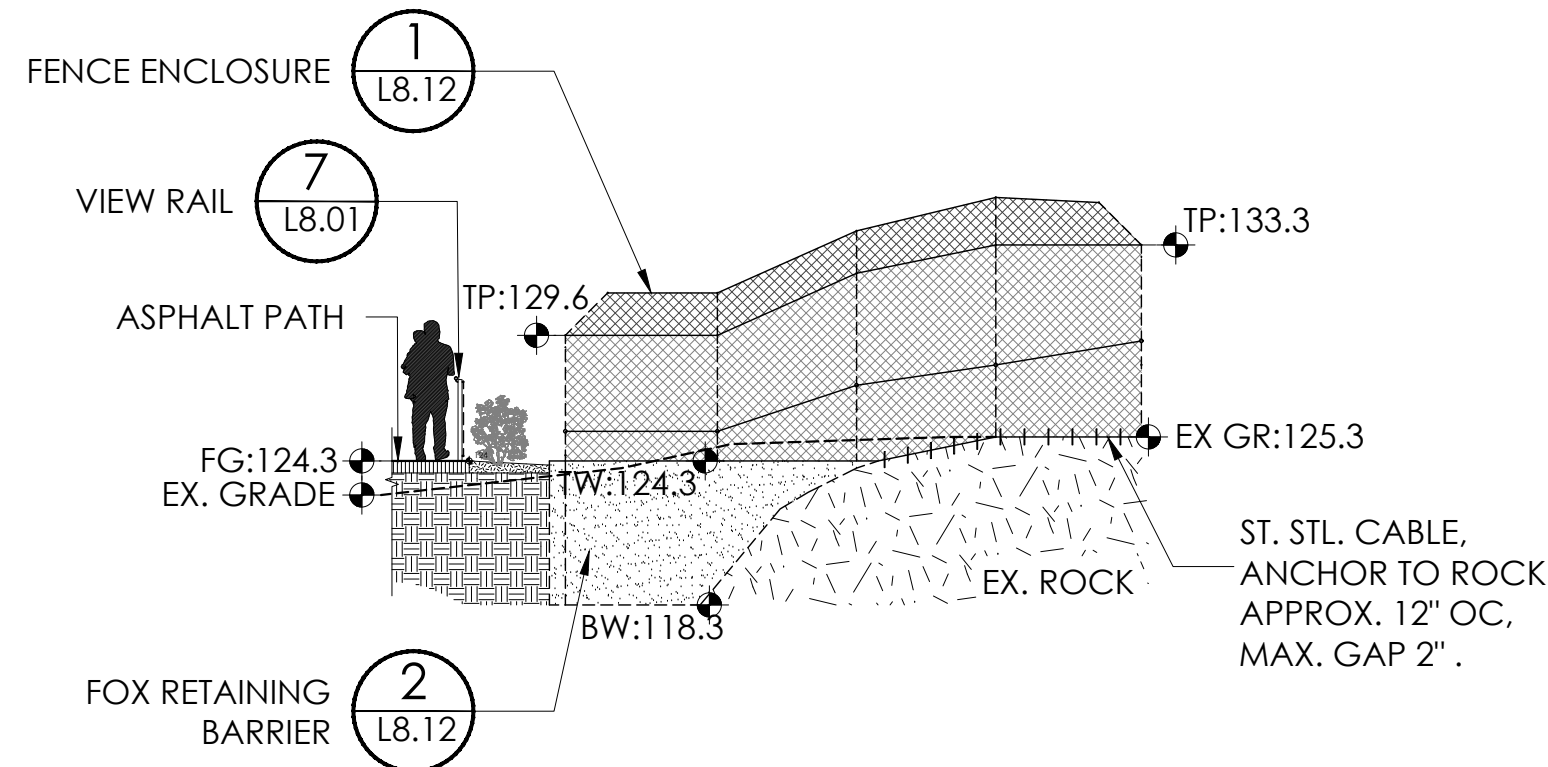
1 FOX ENCLOSURE PLAN
SCALE: 1/8" = 1'-0"



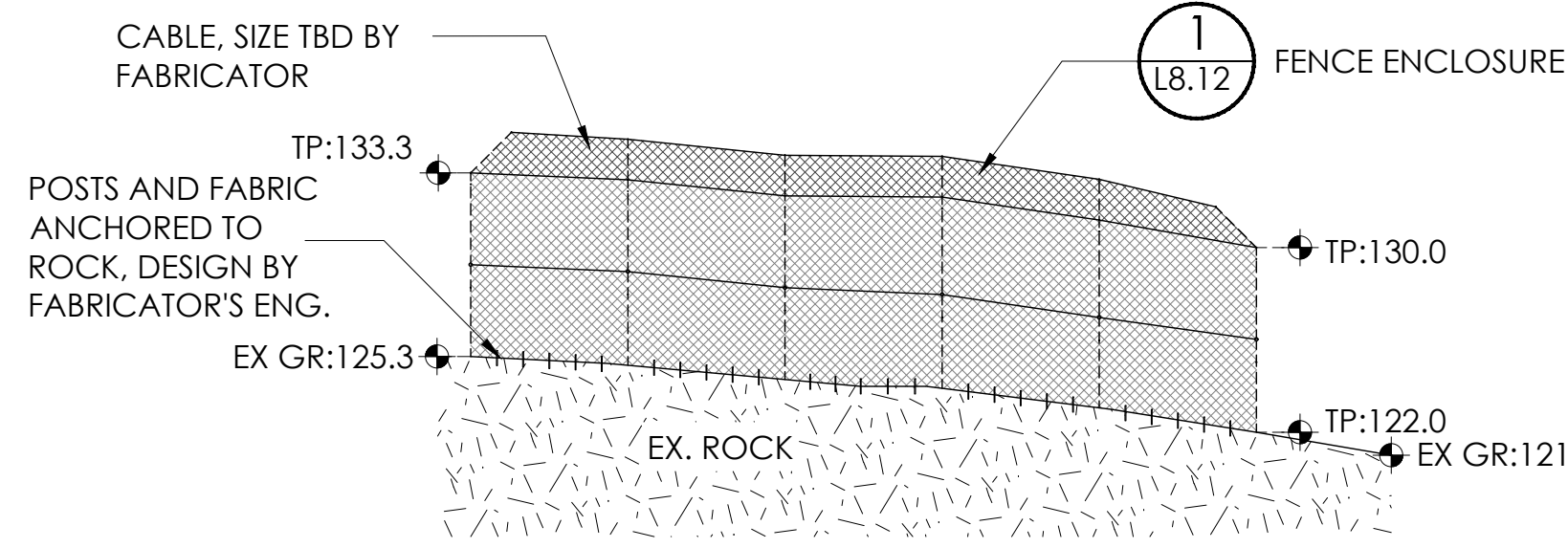
2 EAST ELEVATION
SCALE: 1/8" = 1'-0"



3 NORTHEAST ELEVATION
SCALE: 1/8" = 1'-0"



4 WEST ELEVATION
SCALE: 1/8" = 1'-0"



5 SOUTH ELEVATION
SCALE: 1/8" = 1'-0"

STRUCTURAL NOTES

Design Responsibility:

1. Design/Builder responsible for fence enclosure and foundations shall provide a code compliant structural design. The structural design shall be performed by a New York Registered Professional Engineer.
2. The drawings show a layout intended to maximize the space, and best fit within the existing landscape. The design/builder shall review the layout and make adjustments in the field with the Owner.
3. The Design Builder's Engineer of Record shall account for all loads from the code including those due to temperature, wind, prestressing, snow, self-weight and ice.

FENCE FABRIC

1. KICKER: NETTEM HAND-WOVEN STAINLESS STEEL MESH. OPENING SIZE 3" X 3", FINISH PLAIN, CABLE TYPE STANDARD.
2. FENCE PANEL FROM 3' UP: NETTEM HAND-WOVEN STAINLESS STEEL MESH. OPENING SIZE 1.5" X 1.5", FINISH BLACK OXIDE.
3. FENCE PANEL FROM GRADE TO 3': NETTEM HAND-WOVEN STAINLESS STEEL MESH. OPENING SIZE 1"X1", FINISH BLACK OXIDE.

Number	Revision	Date
--------	----------	------



100% CONSTRUCTION
DOCUMENTS

Coyle & Caron Inc.

Landscape Architects & Habitat Designers
236 PASADENA PLACE
ORLANDO, FL 32803
407-603-7039

Job #	0191
Project	ANIMAL HABITAT IMPROVEMENTS
Drawn By	SC, RK
Checked	SC
Date	02 April 2021
Scale	1/8" = 1'

Drawing Title

Fox Enclosure
Alternate #1

L6.11