

ARCHITECT
HCM Design, Inc.
700 E. Pratt St, Suite 1200, Baltimore, MD 21202
p. 410. 837. 7311

STRUCTURAL ENGINEER
Morabito Consultants
952 Ridgebrook Road, suite 1700, Sparks MD 21152
p. 410.487.2877

FOOD SERVICE
Scopos Hospitality Group
300 West Chestnut Street, Suite 201, Ephrata, PA 17522
p. 717.733.5810

INTERIOR DESIGNER
Merlino Design Partnership, Inc.
2200 Renaissance Blvd, Suite 300, Gulph Mills, PA 19406
p. 610.313.9550

MEPP ENGINEER
LAN Associates
Engineering, Planning, Architecture Surveying, LLP
252 Main Street, Goshen, NY 10924
p. 201.447.6400

HCM / LCS



SENIOR LIVING
AT PURCHASE COLLEGE

BROADVIEW - SENIOR LIVING AT
PURCHASE COLLEGE - COMMONS
BUILDING

hord | coplan | macht

ARCHITECTURE
LANDSCAPE ARCHITECTURE
PLANNING
INTERIOR DESIGN



LAN ASSOCIATES
Engineering, Planning, Architecture, Surveying, LLP
LAN 258 #130811
PROFESSIONAL CERTIFICATION I CERTIFY THAT THESE DOCUMENTS WERE
PREPARED OR APPROVED BY ME, AND THAT I AM A DULY LICENSED ENGINEER
UNDER THE LAWS OF THE STATE OF NEW YORK.
LICENSE NUMBER: 090385
EXPIRATION DATE: 10/31/23

Project Name
BROADVIEW - SENIOR LIVING AT PURCHASE
COLLEGE - COMMONS BUILDING
Project Number
1308.01

Date
4/30/2021

Scale
As indicated

Drawing
PLUMBING FIXTURE SCHEDULE
AND DETAILS

P6.01

PERMIT / GMP SET

© Hord Coplan Macht, Inc.

DOMESTIC FIXTURE SCHEDULE

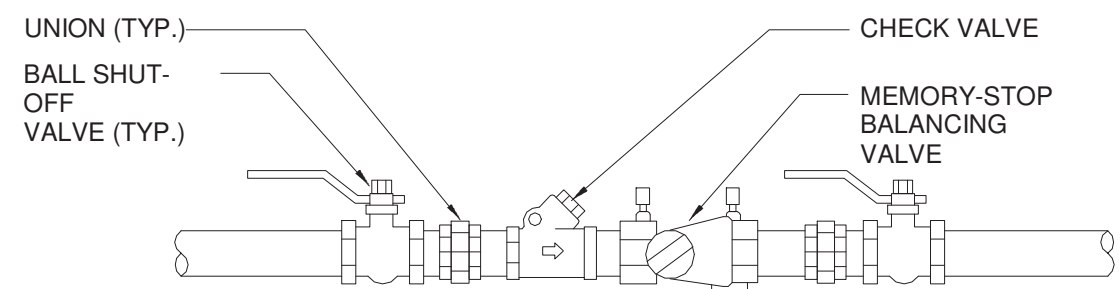
ID	DESCRIPTION	MANUFACTURER	MODEL	QTY	TRIM			FLUSH FIXTURE MIN VOL PER FLUSH	WASTE ROUGH-IN PIPE SIZE	INDIRECT WASTE PIPE SIZE	VENT PIPE PIPE SIZE	COLD WATER ROUGH-IN PIPE SIZE	HOT WATER ROUGH-IN PIPE SIZE	SPECIFICATION	REMARKS
					MANUFACTURER	MODEL	TYPE								
DRYER 1	COMMERCIAL DRYER	UMAC	UT F75	4	--	--	MANUAL							INFORMATION PROVIDE IN ANOTHER SPEC SECTION. FOR VENTING INFO, SEE MECH PLANS	
DRYER 2	LITE DUTY DRYER	SPEEDQUEEN	SINGLE DRYER	5	--	--	MANUAL							INFORMATION PROVIDE IN ANOTHER SPEC SECTION. FOR VENTING INFO, SEE MECH PLANS	
EW-2	WATER COOLER - DUAL HEIGHT	ELKAY	EZSLBWSSK	3					2"		1-1/2"	1/2"		TWO LEVEL WALL HUNG WATER COOLER WITH BOTTLE FILLING STATION. THE UNIT SHALL BE COMPLETE WITH CABINET, MOUNTING FRAME, SELF CLOSING EASY TOUCH SIDE AND FRONT PUSH-BAR CONTROLS, FLEXIGUARD SAFETY BUBBLER, REFRIGERATING SYSTEM, AIR COOLED, 120 VOLT, 60 CYCLE, SINGLE PHASE POWER CONNECTION, FULLY AUTOMATIC, COMPLETE AND READY TO OPERATE.	
HB-1	HOSE BIBB	WOODFORD	B24-1/2	7			MANUAL					3/4"		INTERIOR HOSE BIBB WITH VACUUM BREAKER, 3/4" HOSE THREAD OUTLET, LOCK SHIELD CAP, AND REMOVABLE "TEE" HANDLE. PROVIDE SHUTOFF VALVE IN COLD WATER SUPPLY AHEAD OF HOSE BIBB.	
HB-2	HOSE BIBB-EXT	WOODFORD	MODEL 67	13			MANUAL					3/4"		Freezeless Wall Hydrant, 3/4" HOSE THREAD OUTLET, AND REMOVABLE "KEY" HANDLE. PROVIDE SHUTOFF VALVE IN COLD WATER SUPPLY AHEAD OF HOSE BIBB.	
HB-3	HOSE BIBB - ROOF	WOODFORD	RHY2-MS	4			MANUAL					3/4"		FREEZELESS ROOF HYDRANT WITH VACUUM BREAKER, DUAL CHECK BACKFLOW PREVENTER, 3/4" HOSE THREAD OUTLET, PROVIDE CAST IRON MOUNTING SUPPORT SYSTEM RH-MS. PROVIDE SHUTOFF VALVE IN COLD WATER SUPPLY AHEAD OF HOSE BIBB.	
JS-1	JANITOR SINK	MUSTEE	63 M	5	MUSTEE	63.600A	MANUAL		3"		2"	3/4"	3/4"	SERVICE BASIN, 24"x24"x10" WITH CHROME PLATED 3" DRAIN AND CAST IRON TRAP. FAUCET SHALL INCLUDE PAIL HOOK AND ATMOSPHERIC VACUUM BREAKER SPOUT. FURNISH 65.700 SERVICE HOSE HOSE AND FITTINGS. SERVICE MOP HANGER	
LAV-1	LAVATORY - COUNTERTOP	KOHLER	VERTICYL K-2562-3	29	AMERICAN STANDARD	6059.202	ELECTRONIC		2"		1-1/2"	1/2"	1/2"	COUNTERTOP LAVATORY. FAUCET TOPS ON 4" CENTERS. DECK MOUNTED FAUCET, EXTERNAL ASSE-1070 COMPLIANT THERMOSTATIC MIXING VALVE AMERICAN STANDARD 605XTMV, GRID DRAIN, LOOSE KEY ANGLE STOPS AND SUPPLIES. INSULATE WATER AND WASTE WITH ADA INSULATION KIT AS NEEDED. MOUNT AT ADA COMPLIANT HEIGHT.	
OB-2	DISHWASHER OUTLET BOX	SIoux CHIEF	696-RG1001MF	2					2"		2"	1/2"	1/2"	FULLY RECESSED FIRE RATED DISHWASHER SUPPLY BOX WITH COVER. PROVIDE 1/4 TURN BALL VALVES AND WATER HAMMER ARRESTORS IN BOX. PROVIDE A 2" TRAPPED STANDPIPE IN CONCEALED WALL SPACE.	
OB-5	ICE MAKER OUTLET BOX	SIoux CHIEF	696-RG1010MF	2					2"		2"	1/2"	1/2"	FULLY RECESSED FIRE RATED ICE MAKER SUPPLY BOX WITH COVER. PROVIDE 1/4 TURN BALL VALVES AND WATER HAMMER ARRESTORS IN BOX.	
OB-7	WASHING MACHINE OUTLET BOX	SIoux CHIEF	696-R2313MF	2					2"		2"	1/2"	1/2"	FULLY RECESSED FIRE RATED WASHING MACHINE SUPPLY BOX WITH COVER. PROVIDE 1/4 TURN BALL VALVES AND WATER HAMMER ARRESTORS IN BOX. PROVIDE A 2" TRAPPED STANDPIPE IN CONCEALED WALL SPACE.	
S-1	LAUNDRY DUAL BOWL SINK	MUSTEE	27 UTILA7WIN	3	MUSTEE	93.600	MANUAL		2"		2"	3/4"	3/4"	LAUNDRY Utility Sink, ADA Compliance No. Back Splash Height 58 in. Bowl Depth 12 3/4 in. Rectangular Bowl Size 24 in x 20 in. White, Drain Opening 1 1/2 in. Drainboard Location No Drainboard, Faucet Hole Dia. 1 in, 1 1/8 in. Faucet Installation Style Centerset, Faucet Mounting Centers 4 in, 8 in, Unfinished, Mounting Location - Faucet Deck, Mounting Type - Sinks Floor, No. of Bowls 2, Number of Drainboards 0, Number of Faucet Holes 3, P-TRAP, TAILPIECES, SUPPLIES AND STOPS.	
S-2	CLASSROOM SINK	ELKAY	DAYTON DCLP1118	4	DELTA	9159T-DST	MANUAL		2"		2"	1/2"	1/2"	31-3/4" UNDERMOUNT DOUBLE BASIN STAINLESS STEEL SINK. SINGLE LEVER SWIVEL FAUCET. ONE ELKAY MODEL NO. LK35 BASKET STRAINER, P-TRAP, TAILPIECES, SUPPLIES AND STOPS. INSULATE WATER AND WASTE TO MEET ADA REQUIREMENTS.	
S-4	KITCHENETTE SINK	KOHLER	K-3177	3	DELTA	9159T-DST	MANUAL		1-1/2"		1-1/2"	1/2"	1/2"	SINGLE COMPARTMENT, COUNTER TOP, 18 GAUGE. SINGLE LEVER SWIVEL FAUCET. ONE ELKAY MODEL NO. LK35 BASKET STRAINER, P-TRAP, TAILPIECES, SUPPLIES AND STOPS. INSULATE WATER AND WASTE TO MEET ADA REQUIREMENTS.	
S-5	WOODSHOP SINK	ELKAY	LR1716SC	1	ELKAY	LK500GN04T4 SC	MANUAL		1-1/2"		1-1/2"	1/2"	1/2"	SINGLE COMPARTMENT, COUNTER TOP MOUNT, 18 GAUGE. SINGLE LEVER SWIVEL FAUCET. BASKET STRAINER, P-TRAP, TAILPIECES, SUPPLIES AND STOPS. INSULATE WATER AND WASTE TO MEET ADA REQUIREMENTS.	
SAL-1	SHAMPOO STATION - FIXED	BELVEDERE MALETTI	8600	2			MANUAL		1-1/2"		1-1/2"	1/2"	1/2"	PORCELAIN ENAMEL CAST IRON BOWL, w/ wall mounting bracket and flexible drain hose. Adjustable tilt 10 degrees forward from center and 5 degrees back from center. Wall-mount bracket & flexible drain hose included. STRAINER, P-TRAP, TAILPIECES, SUPPLIES AND STOPS. PROVIDE HAIR TRAP. PROVIDE WATTS UNDER SINK GUARDIAN MODEL LFUSG-B (ASSE 1070) LIMIT OUTLET TEMPERATURE TO 110°F MAX.	
SAL-2	SHAMPOO STATION - ADJUSTABLE	ADJUST-A-SINK	8600	1			MANUAL		1-1/2"		1-1/2"	1/2"	1/2"	Adjust-a-Sink series E140 electric elevating sink, complete with Comfort Fit 3050 solid surface shampoo bowl, faucet valve with whiz spray, vacuum breaker and strainer basket filter, chrome plated fit system, laminated mounting panels, steel drain shroud. Bowl & Laminate color is to be SELECTED BY OWNER. STRAINER, P-TRAP, TAILPIECES, SUPPLIES AND STOPS. PROVIDE HAIR TRAP. PROVIDE WATTS UNDER SINK GUARDIAN MODEL LFUSG-B (ASSE 1070) LIMIT OUTLET TEMPERATURE TO 110°F MAX.	
SAL-3	PEDI SPA	CONTINUUM FOOTSPAS	ECHO LE	2	-	-	-		1"		1"	1/2"	1/2"	PROVIDE DRAIN PUMP KIT AND SOLID SERVICE BASIN. ROUGH-IN ACCORDING TO MANUFACTURERS RECOMMENDATIONS, BACKFLOW PREVENTION IS PROVIDED, BASIN CAPACITY IS 4.75 GAL. P-TRAP, TAILPIECES, SUPPLIES AND STOPS. INSULATE WATER AND WASTE TO MEET ADA REQUIREMENTS.	
SAL-4	SALON MIXING SINK	ELKAY	LR2522C	1	AMERICAN STANDARD	7500.178	MANUAL		1-1/2"		1-1/2"	1/2"	1/2"	SINGLE COMPARTMENT, COUNTER TOP, 18 GAUGE. SINGLE LEVER SWIVEL FAUCET. ONE ELKAY MODEL NO. LK35 BASKET STRAINER, P-TRAP, TAILPIECES, SUPPLIES AND STOPS. INSULATE WATER AND WASTE TO MEET ADA REQUIREMENTS.	
SAL-5	SPA SINK	KOHLER	VERTICYL K-2562-3	1	AMERICAN STANDARD	2506.145 W	MANUAL		1-1/2"		1-1/2"	1/2"	1/2"	SINGLE COMPARTMENT, COUNTER TOP. SINGLE LEVER SWIVEL FAUCET. BASKET STRAINER, P-TRAP, TAILPIECES, SUPPLIES AND STOPS. INSULATE WATER AND WASTE TO MEET ADA REQUIREMENTS.	
SH-1	POOL SHOWER	SEE NOTES	SEE NOTES	1	DELTA	T27976-LHP & S1361	MANUAL		2"		1-1/2"	1/2"	1/2"	THE INDIVIDUAL POOL SHOWER IS SPECIFIED IN ANOTHER DIVISION. PROVIDE A SHOWER DRAIN AS SPECIFIED IN "SOIL, WASTE, AND VENT PIPING SYSTEMS." SHOWER SYSTEM WITH ASSE 1016 COMPLIANT TYPE "T/P" THERMOSTATIC/PRESSURE BALANCING COMBINATION MIXING VALVE WITH ADJUSTABLE STOP SCREW TO LIMIT HANDLE TURN. PROVIDE MANUFACTURER'S FLOW RATE RESTRICTOR ON SHOWERHEAD.	
SH-2	SHOWER	SEE NOTES	SEE NOTES	4	DELTA	T27976-LHP & S1361	MANUAL		2"		1-1/2"	1/2"	1/2"	THE INDIVIDUAL, TILE SHOWER IS SPECIFIED IN ANOTHER DIVISION. PROVIDE A SHOWER DRAIN AS SPECIFIED IN "SOIL, WASTE, AND VENT PIPING SYSTEMS." SHOWER SYSTEM WITH ASSE 1016 COMPLIANT TYPE "T/P" THERMOSTATIC/PRESSURE BALANCING COMBINATION MIXING VALVE WITH ADJUSTABLE STOP SCREW TO LIMIT HANDLE TURN. PROVIDE MANUFACTURER'S FLOW RATE RESTRICTOR ON SHOWERHEAD.	
SS-1	SAFETY SHOWER WEYEFACE WASH - PEDESTAL	GUARDIAN	GPF1994	2						1-1/4"		1"	1"	SHOWER/EYEFACE WASH STATION, GUARDIAN #GPF1994 STAINLESS STEEL BOWL, #AP600-101V IPS STAY-OPEN CHROME PLATED BRASS BALL VALVE W/ FLAG HANDLE #AP470-001. SPRAY HEAD ASSY, WASTE RECEPTOR, #ITM G3 600LF THERMOSTATIC MIXING VALVE.	
SS-2	EYEWASH - WALL MNT	GUARDIAN	G1814P	3							1-1/2"	1/2"	3/4"	WALL MOUNT SAFETY EYEFACE WASH STATION. PROVIDE THERMOSTATIC MIXING VALVE MODEL G3600 EMERGENCY TEMPERING VALVE.	
U-1	URINAL	AMERICAN STANDARD	WASHBROOK	3	SLOAN	8186	BATTERY	0.125 gal	1-1/2"		1-1/2"	3/4"	3/4"	WALL HUNG URINAL WITH WASH-OUT ACTION, TOP SPUD, SIZE 18" WITH INTEGRAL EXTENDED SHIELDS SUPPORTED BY THROUGH GOING BOLTS AND C/P NUTS. SOLAR POWERED SENSOR ACTIVATED FLUSHOMETER.	
WA-1	COMMERCIAL WASHER	UNIMAC	SOFTMOUNT UY55	4	-	-	MANUAL					3/4"	3/4"	INFORMATION PROVIDED IN ANOTHER SPEC DIVISION. PROVIDE CONNECTION WITH DOUBLE CHECK BACKFLOW PREVENTER, PROVIDE SHUTOFF VALVES ON COLD AND HOT WATER IN ACCESSIBLE LOCATION.	
WA-2	LITE DUTY WASHER	SPEEDQUEEN	FRONT LOAD	2	-	-	MANUAL					1/2"	1/2"	INFORMATION PROVIDED IN ANOTHER SPEC DIVISION. PROVIDE CONNECTION WITH DOUBLE CHECK BACKFLOW PREVENTER, CONNECT TO OX-BOX	
WC-1	WATER CLOSET - FLR MNT-TANK-ADA	TOTO	CR5454CEFG01	26	TANK TYPE			1.28 gal	3"		2"	1/2"		ELONGATED FLOOR MOUNTED 2 PIECE TANK TYPE WATER CLOSET, TORNADO FLUSH 1.28 GPF, WITH SC534 ELONGATED OPEN FRONT SEAT. PROVIDE A 1/4" BRASS BALL VALVE AT WALL CONNECTION. UNIVERSALS HEIGHT, COLOR TO BE SELECTED BY OWNER	
Grand total: 139															

GREASE INTERCEPTOR SCHEDULE

ID	LOCATION		MANUFACTURER	MODEL	QTY	TYPE	MATERIAL DESCRIPTION	COVER		DESIGN FLOW	CAPACITY			INSTALLATION		PIPE CONNECTIONS		DIMENSIONS			REMARKS			
	NAME	NO.						DESCRIPTION	DIA		LIQUID	GREASE	SOLIDS	ARRANGEMENT	BOTTOM OF EQUIPMENT ELEV	ESTIMATED RISER HEIGHT	INLET		OUTLET			LENGTH	WIDTH	HEIGHT
																	INVERT	DIA	INVERT	DIA				
GI-35	CAFE PANTRY	7	SCHIER	GB-1	1	HYDROMECHA	POLYPROPYLENE	POLYPROPYL	21 1/2"	35 GPM	20.0 gal	130.50 bsm	0.0 gal	ABOVE GRADE	0'-0"	0'-0"	-2'-0"	4"	-2'-0"	4"	2'-11"	1'-11"	1'-2"	
GI-1500	EXTERIOR	-	JENSEN	JP1500-G	1	GRAVITY	PRECAST CONCRETE	CAST IRON	24"	0 GPM	1500.0 gal	0.00 bsm	0.0 gal	BELOW GRADE	-7'-0"	1'-0"	-2'-0"	4"	-2'-3"	4"	10'-8"	5'-7"	6'-0"	
Grand total: 2																								

FLOOR DRAIN SCHEDULE

ID	DESCRIPTION	MANUFACTURER	MODEL	QTY	MATERIAL DESCRIPTION		PRIMER CONNECTION	WASTE PIPE SIZE	VENT PIPE SIZE	PRIMER PIPE SIZE	SPECIFICATION	REMARKS
					DRAIN BODY	STRAINER						
FD-1	FLOOR DRAIN	WATTS	FD-100-A	1	EPOXY COATED CAST IRON	NICKEL BRONZE	No	2"	2"		EPOXY COATED CAST IRON FLOOR DRAIN WITH ANCHOR FLANGE, REVERSIBLE CLAMPING COLLAR WITH PRIMARY & SECONDARY WEEPHOLES, ADJUSTABLE ROUND HEEL PROOF NICKEL BRONZE STRAINER, AND NO HUB OUTLET.	
FD-1	FLOOR DRAIN	WATTS	FD-100-A	28	EPOXY COATED CAST IRON	NICKEL BRONZE	Yes	2"	2"	12 in	EPOXY COATED CAST IRON FLOOR DRAIN WITH ANCHOR FLANGE, REVERSIBLE CLAMPING COLLAR WITH PRIMARY & SECONDARY WEEPHOLES, ADJUSTABLE ROUND HEEL PROOF NICKEL BRONZE STRAINER, AND NO HUB OUTLET.	
FD-1	FLOOR DRAIN	WATTS	FD-100-A	18	EPOXY COATED CAST IRON	NICKEL BRONZE	No	3"	2"		EPOXY COATED CAST IRON FLOOR DRAIN WITH ANCHOR FLANGE, REVERSIBLE CLAMPING COLLAR WITH PRIMARY & SECONDARY WEEPHOLES, ADJUSTABLE ROUND HEEL PROOF NICKEL BRONZE STRAINER, AND NO HUB OUTLET.	
FD-1	FLOOR DRAIN	WATTS	FD-100-A	1	EPOXY COATED CAST IRON	NICKEL BRONZE	No	6"	3"		EPOXY COATED CAST IRON FLOOR DRAIN WITH ANCHOR FLANGE, REVERSIBLE CLAMPING COLLAR WITH PRIMARY & SECONDARY WEEPHOLES, ADJUSTABLE ROUND HEEL PROOF NICKEL BRONZE STRAINER, AND NO HUB OUTLET.	
FD-3	FLOOR DRAIN	WATTS	FD-100-M	1	EPOXY COATED CAST IRON	NICKEL BRONZE	Yes	2"	2"	12 in	EPOXY COATED CAST IRON FLOOR DRAIN WITH ANCHOR FLANGE, REVERSIBLE CLAMPING COLLAR WITH PRIMARY & SECONDARY WEEPHOLES, ADJUSTABLE SQUARE HEEL PROOF NICKEL BRONZE STRAINER, AND NO HUB OUTLET.	
FD-5	LAUNDRY TROUGH DRAIN	BY OTHERS	BY OTHERS	2	EPOXY COATED CAST IRON	NICKEL BRONZE	No	3"	2"		SEE LAUNDRY TROUGH DRAIN DETAIL FOR ADDITIONAL INFORMATION.	
FD-21	FLOOR DRAIN	WATTS	FD-1200-L	4	EPOXY COATED CAST IRON	STAINLESS STEEL	No	4"	2"		ON-GRADE EPOXY COATED CAST IRON FLOOR DRAIN WITH ANCHOR FLANGE, WEEPHOLES, ADJUSTABLE HEAVY DUTY SQUARE HEEL PROOF STAINLESS STEEL STRAINER, AND NO HUB OUTLET.	
FS-3	FLOOR SINK	WATTS	FS-730	21	EPOXY COATED CAST IRON	ALUMINUM		3"	2"	---	12" SQUARE X 6" DEEP SANITARY FLOOR SINK WITH WHITE PORCELAIN ENAMEL COATED INTERIOR, LOOSE SET PORCELAIN ENAMEL COATED CAST IRON GRATE, ALUMINUM DOME BOTTOM STRAINER, AND NO HUB OUTLET.	
Grand total: 76												



- NOTES:
1. ALL THREADED PIPING BETWEEN UNIONS SHALL BE BRASS.
 2. INSTALL D-ELECTRIC UNIONS FOR PIPING CONNECTIONS OF DISSIMILAR METALS.

DHWR BALANCING ASSEMBLY DETAIL

N.T.S.

LEGEND	
—DCW—	NEW DOMESTIC COLD WATER PIPING
—DHW—	NEW DOMESTIC HOT WATER PIPING
—DHW-R—	NEW DOMESTIC HOT WATER RETURN PIPING
—GAS—	GAS LINE
—[D]-[D]—	NEW BALL VALVE SHUTOFF
—[D]-[D]—	NEW GAS SHUTOFF VALVE

DOMESTIC HOT WATER HEATER SCHEDULE

(AO SMITH AS STANDARD)

TAG No.	SERVICE	INPUT RATING (MBH)	RECOVERY RATE @ 80° F RISE (GPH)	STORAGE CAPACITY (GAL)	THERMAL EFFICIENCY %	FLUE SIZE	ELECTRIC DATA VOLT/PH/Hz	MODEL & MANUFACTURER	DIMENSION DIA. X H (IN)	APPROX. WEIGHT (LB.)	REMARKS
DHWH-1	WEST	300	872	119	98	4"Ø	115/1/60	BTH-300A Mxi AO SMITH	33-1/8 x 75-3/4	825	SEE NOTES
DHWH-2	EAST	300	872	119	98	4"Ø	115/1/60	BTH-300A Mxi AO SMITH	33-1/8 x 75-3/4	825	SEE NOTES

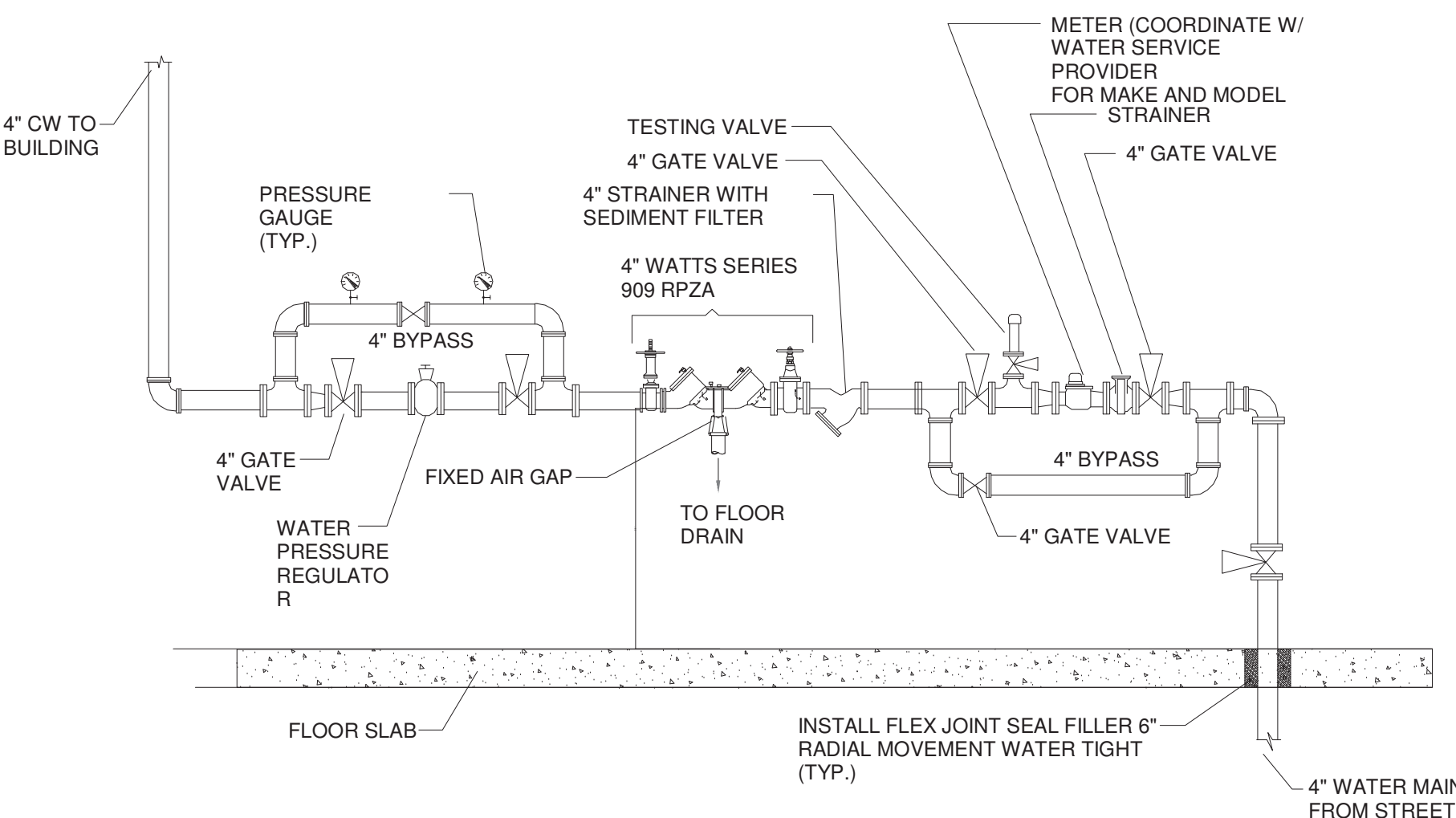
NOTES:

1. PROVIDE W/ STANDARD 150 PSI TEMPERATURE & PRESSURE RELIEF VALVE AND 4" PVC CONCENTRIC VENT.

2. PROVIDE A CONDENSATE DRAIN W/ CONDENSATE ACID NEUTRALIZING TUBE MODEL #JM-2 (OR APPROVED EQUAL) ON BOTTOM OF EXHAUST FLUE VENT

NOTES:

1. THE NEW WATER METER ASSEMBLY SHOWN HERE SHALL BE INSTALLED IN NEW SPRINKLER ROOM 003 ALONG WITH ALL REQUIRED FIRE SPRINKLER PIPES, VALVES, ETC. REFER TO PD.01 FOR DETAILS
2. PROVIDE 1/2" DIA. PIPE SUPPORTS FOR RPZA & HORIZONTAL PIPING. THE QUANTITY SHALL BE DETERMINED IN FIELD.
3. THE RPZA SHALL BE INSTALLED MIN. 8" FROM THE WALL. THE INSTALLATION SHALL CONFORM WITH LOCAL WATER COMPANY REGULATIONS AND ALL CITY, COUNTY AND STATE HEALTH DEPARTMENT REQUIREMENTS.

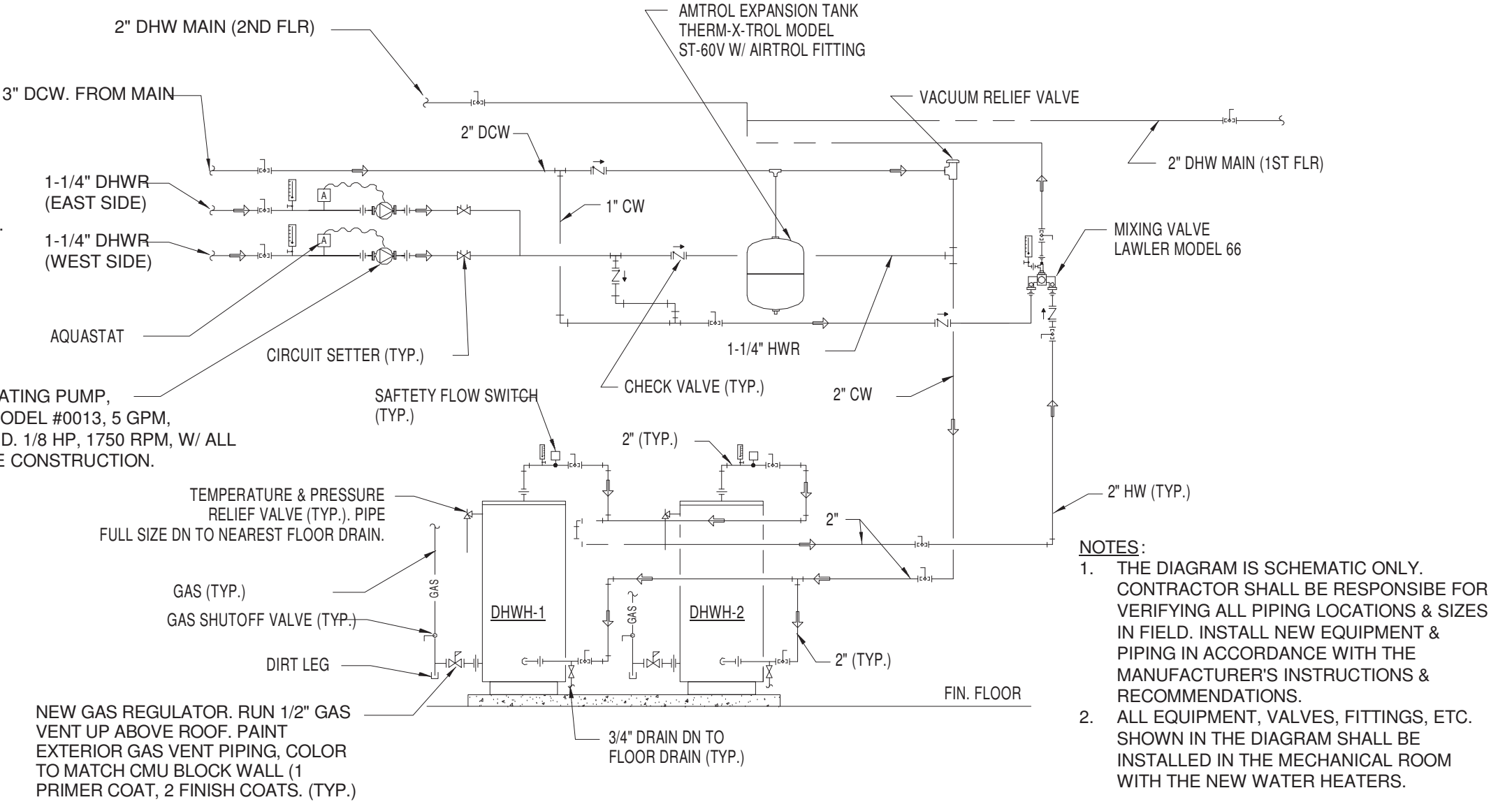


WATER METER WITH BACKFLOW PREVENTER ASSEMBLY DETAIL

N.T.S.

DOMESTIC HOT WATER SYSTEM PIPING PLAN

NOT TO SCALE



DOMESTIC HOT WATER SYSTEM PIPING DIAGRAM

NOT TO SCALE