

# PLUMBING INDEX SHEET













## GENERAL NOTES

1. ALL MATERIALS AND APPARATUS SHALL BE INSTALLED IN ACCORDANCE WITH ALL THE RULES AND REGULATIONS OF THE NEW YORK STATE BUILDING CODES AND ALL OTHER AUTHORITIES HAVING JURISDICTION.
2. BEFORE SUBMITTING PROPOSAL, BIDDERS SHALL CAREFULLY EXAMINE EXISTING FIELD CONDITIONS AND CONTRACT DRAWINGS OF ALL TRADES. SUBMISSION OF PROPOSAL WILL BE CONSTRUCTED AS EVIDENCE THAT REQUIRED EXAMINATION HAS BEEN MADE. TATER CLAIMS FOR EXTRA LABOR, EQUIPMENT AND MATERIALS REQUIRED DUE TO EXISTING FIELD CONDITIONS, WHICH COULD HAVE BEEN FORESEEN, WILL NOT BE RECOGNIZED.
3. PROCUREMENT OF ALL PERMITS AND CERTIFICATES FOR THE INSTALLATION OF THESE SYSTEMS SHALL BE PERFORMED IN ACCORDANCE WITH ALL THE RULES AND REGULATIONS OF THE NEW YORK STATE BUILDING CODES AND ALL OTHER AUTHORITIES HAVING JURISDICTION.
4. THE CONTRACTOR SHALL COORDINATE HIS WORK WITH ALL OTHER TRADES AND ALL EXISTING CONDITIONS, AND PROVIDE ALL REQUIRED TO OFFSET ALL ADDITIONAL PIPING AND FITTINGS AT NO EXTRA COST. TO AVOID EXISTING / NEW STRUCTURE. ARCHITECTURAL, MECHANICAL AND ELECTRICAL INTERFERENCES, WHETHER INDICATED OR NOT, BEFORE INSTALLING WORK.
5. CONNECTION TO EXISTING SERVICES SHALL BE PERFORMED DURING OFF-WORK HOURS OF ON WEEKENDS IN PREMIUM TIME. CONNECTION OF NEW WORK TO EXISTING WORK SHALL BE PERFORMED IN NEAT AND APPROVE MANNER, RESTORING EXISTING WORK DISTURBED TO ORIGINAL CONDITION.
6. ALL NEW PIPING SHALL BE RUN CLOSE TO BEAMS, WALLS AND SLABS, SQUARE TO BUILDING CONSTRUCTION, CONCEALED ABOVE HUNG CEILINGS AND WITHIN FURRED SPACES.
7. ALL EXISTING PIPING, INDICATED AND /OR NOTED TO REMOVED, SHALL BE REMOVED BACK TO EXISTING STACKS, RISERS OR MAINS AND CAPPED / PLUGGED AT TERMINAL POINT UNLESS OTHERWISE DIRECTED BY OWNER OR ENGINEER.
8. THE CONTRACTOR SHALL NOT INTERRUPT ANY OF SERVICES OF THE EXISTING BUILDING WITHOUT THE EXPRESSED WRITTEN PERMISSION OF THE OWNER AND SUCH INTERRUPTIONS SHALL BE AS BRIEF AS POSSIBLE, AND AT THE TIME AGREED TO WITH THE OWNER.
9. UNDER NO CIRCUMSTANCES WILL THIS CONTRACTOR OR HIS WORKMEN BE PERMITTED TO USE ANY PART OF THE BUILDING AS A SHOP EXCEPT AREAS DESIGNATED BY OWNER.
10. EXISTING PIPING DAMAGED AS A RESULT OF PERFORMING THE WORK OF THIS CONTRACT SHALL BE REPAIRED OR REPLACE AS REQUIRED WITH MATERIAL AND FINIS TO MATCH EXISTING.
11. DRAWINGS ARE DIAGRAMMATIC AND INDICATE GENERAL ARRANGEMENT.
12. THIS CONTRACTOR SHALL PATCH AND FIRE PROOF ALL OPENINGS IN FLOORS OR WALLS AS REQUIRED.

## PLUMBING INSTALLATION CRITERIA

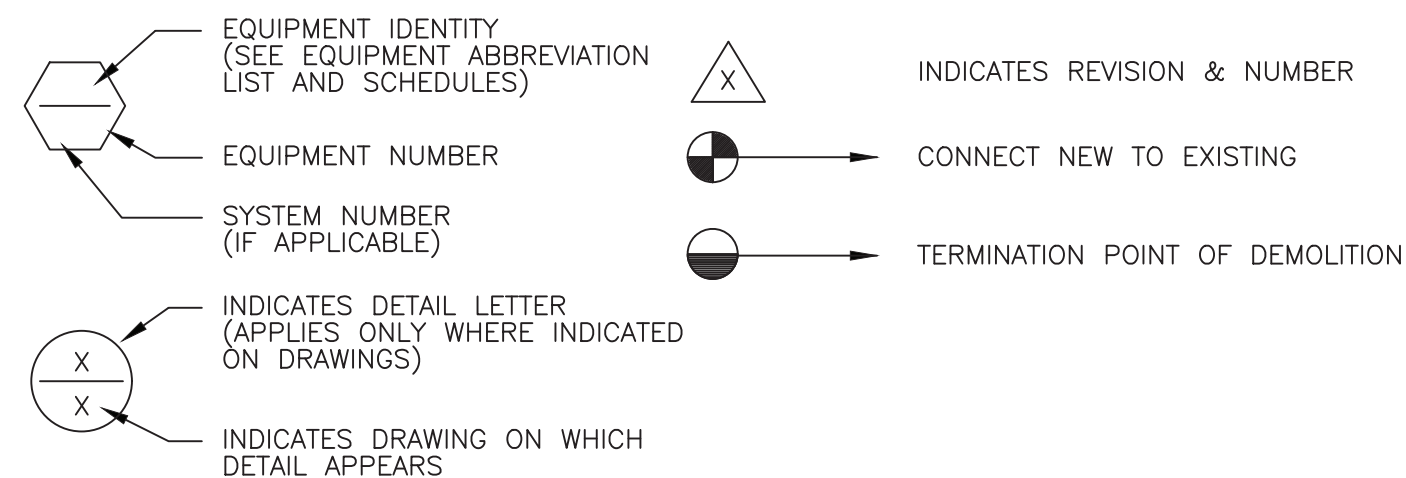
EACH BIDDER SHALL VISIT THE SITE AND BECOME INFORMED AS TO THE CONDITION OF THE PREMISES AND THE EXTENT AND CHARACTER OF WORK REQUIRED. NO ADDITIONAL COMPENSATION WILL BE APPROVED DUE TO FIELD CONDITIONS.

1. COORDINATE POSITION OF SLEEVES AND OPENINGS THROUGH FLOOR WITH THE GENERAL CONTRACTOR.
2. ALL PIPING AND EQUIPMENT SHALL BE SUBSTANTIALLY SUPPORTED FROM THE BUILDING STRUCTURE. HANGER AND SUPPORTS SHALL BE SPECIFICALLY APPROVED FOR USE IN PLUMBING SYSTEMS.
  - A. WHERE OVERHEAD CONSTRUCTION DOES NOT PERMIT FASTENING OF HANGER RODS IN REQUIRED LOCATIONS, PROVIDE ADDITIONAL STEEL FRAMING AS REQUIRED AND APPROVED.
  - B. NO PLUMBING PIPING SHALL BE HUNG FROM THE PIPING OF OTHER TRADES OR DUCTWORK. HANGERS SHALL BE OF HEAVY CONSTRUCTION SUITABLE FOR THE SIZE OF PIPE TO BE SUPPORTED.
3. ALL HORIZONTAL PIPING RUNS WILL BE AT THE HIGHEST PRACTICAL ELEVATION AND NOT LESS THAN 6" ABOVE THE FLOOR SO AS TO PROVIDE CLEARANCE.

LIST OF SYMBOLS	
	PUMP DISCHARGE
	PIPE UP OR RISE
	PIPE DN OR DROP
	CAP
	CUT AND RECONNECT
	PIPE BREAK
	GAS SAFETY SHUT OFF VALVE – MAXON
	GAS SERVICE VALVE
	GAS COCK
	VALVE ON VERTICAL – VOV
	SHUT OFF VALVE
	CHECK VALVE

NOTE: NOT ALL SYMBOLS, ABBREVIATIONS AND  
EQUIPMENT ABBREVIATIONS INDICATED APPEAR  
ON THESE CONTRACT DRAWINGS

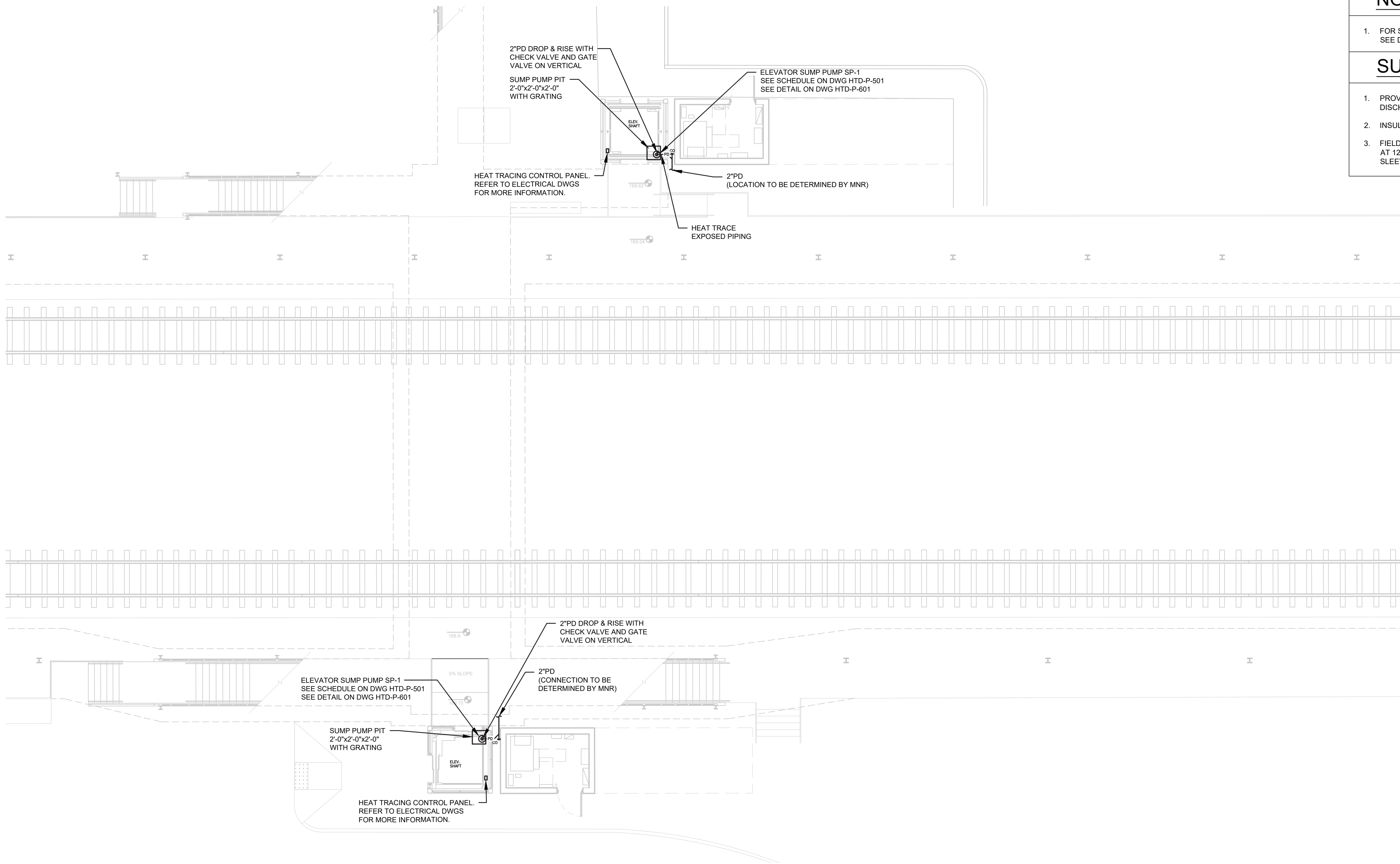
## REFERENCE SYMBOLS



LIST OF ABBREVIATIONS	
AFF	ABOVE FINISH FLOOR
BLDG	BUILDING
CLG	CEILING
CONN	CONNECTION
CONT	CONTINUED
CFH	CUBIC FEET PER HOUR
DIM	DIMENSION
DN	PIPE DOWN THRU FLOOR
DROP	PIPE DROPPING BETWEEN FLOORS
DWG	DRAWING
EL	ELEVATION
EXIST	EXISTING
FL	FLOOR
GPM	GALLONS PER MINUTE
HP	HORSE POWER
INV EL	INVERT ELEVATION
NC	NORMALLY CLOSED
NO	NORMALLY OPEN
N.T.S	NOT TO SCALE
PD	PUMP DISCHARGE
PLBG	PLUMBING
RISE	PIPE RISING BETWEEN FLOORS
RM	ROOM
RPM	ROTATION PER MINUTE
SQ FT	SQUARE FEET
TYP	TYPICAL
UP	PIPE RISING THRU FLOOR
VIF	VERIFY IN FIELD
VOV	VALVE ON VERTICAL
WC	WATER COLUMN
WTS	WATER TIGHT SLEEVE

## 100% RFC SUBMISSION

[illegible]



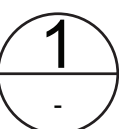
NOTES:

1. FOR SYMBOLS, ABBREVIATIONS AND GENERAL NOTES  
SEE DRAWING HTD-P-001

SUMP PUMP DISCHARGE NOTES:

1. PROVIDE ELECTRICAL HEAT TRACING ON PUMP AND PUMP  
DISCHARGE LINES CONTAINING STANDING WATER.
2. INSULATE ALL HEAT TRACED PUMP DISCHARGE LINES.
3. FIELD ROUTE AND COORDINATE WITH MNR DISCHARGE DRAIN LINE  
AT 12" ABOVE GRADE. SPILL DISCHARGE ON GRADE AND PROVIDE  
SLEEVE AND SEAL AT PENETRATION.

PLUMBING  
PLATFORM PART PLAN



1/8"=1'-0"

0 4' 8' 16'

DESIGNED	AD												CONFORMED									
DRAWN	AD																					
CHECKED	JP																					
APPROVED	JP																					
			NO.	DATE	DRWN			CHKD	APPVD	NO.	DATE	DRWN			CHKD	APPVD						
REVISION									REVISION													



TITLE		CONTRACT NO.	
HARTSDALE AND SCARSDALE STATION IMPROVEMENTS		1000106733	
SCALE	DATE		
	07/09/2021		
DRAWING NO.			
HARTSDALE STATION PLATFORM PART PLAN		HTD-P-101	
HARTSDALE STATION		SHEET 97 OF 99	

100% RFC SUBMISSION


PUMP SCHEDULE														
PUMP NO.	LOCATION	TYPE	SERVICE	MANUFACTURER	MODEL		MAX FLOW (GPM)	MAX HD (FT)	RPM	MOTOR DATA				REMARKS
										HP	PHASE	CYCLE	VOLTS	
SP-1	PASSENGER ELEVATOR	SIMPLEX SUBMERSIBLE PUMP	ELEVATOR PIT	STANCOR	SE50		74	37	1,750	1/2	1	60	115	SIMPLEX OIL SENSING ELEVATOR SUMP PUMP. SINGLE DIRECT PLUG-IN POWER.

DESIGNEDAD


DRAWNAD

CHECKEDJP

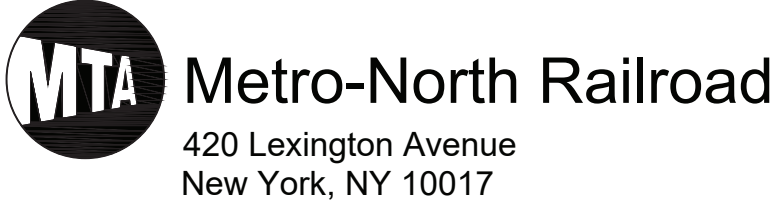
APPROVEDJP



NO.	DATE		DRWN	CHKD	APPVD	NO.	DATE		DRWN	CHKD	APPVD		
REVISION						REVISION							



225 PARK AVENUE SOUTH,  
NEW YORK, NY 10003



420 Lexington Avenue  
New York, NY 10017

100% RFC SUBMISSION

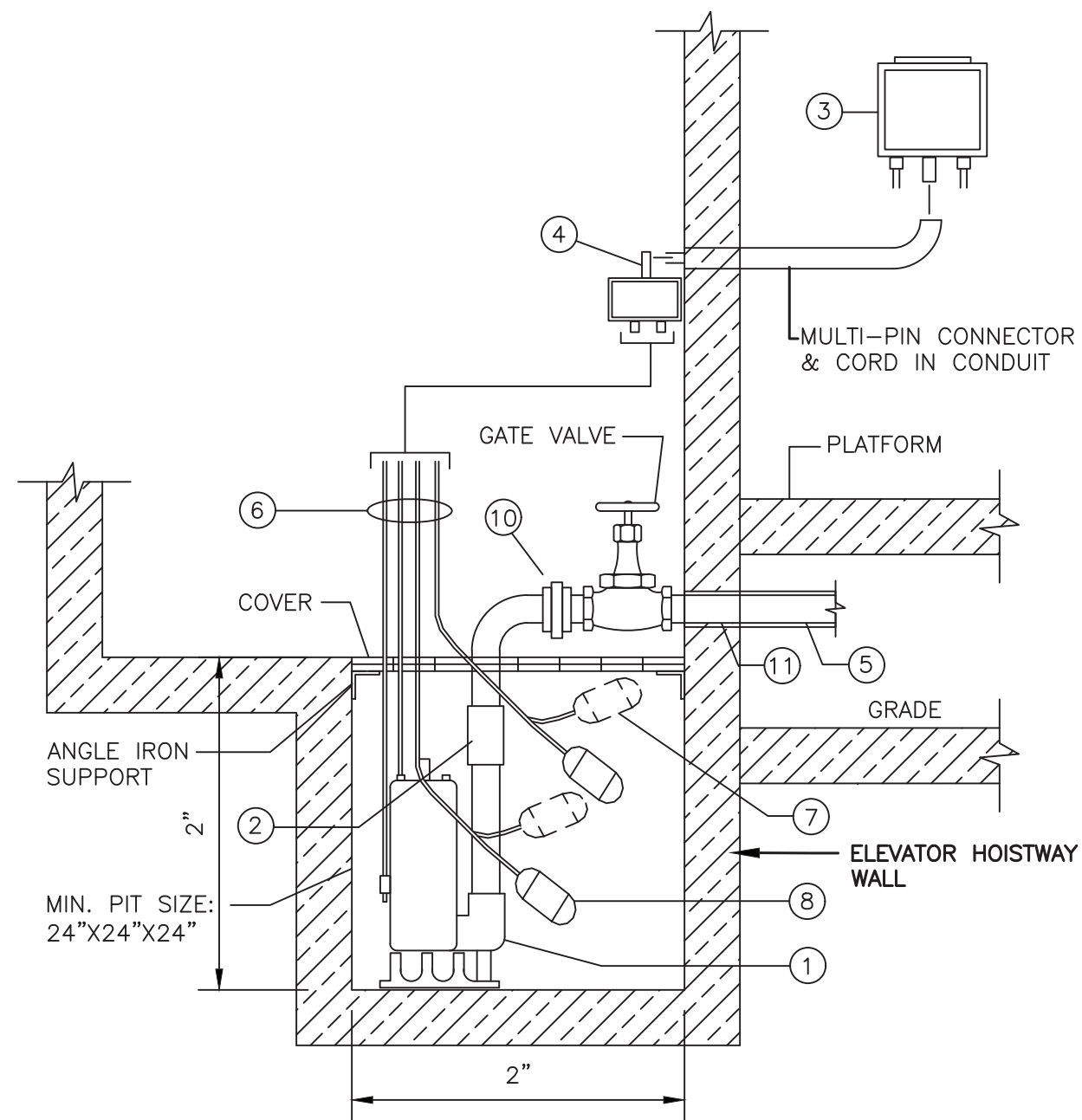
TITLE  
HARTSDALE AND SCARSDALE STATION  
IMPROVEMENTS  
PLUMBING  
HARTSDALE STATION  
SCHEDULES  
HARTSDALE STATION

CONTRACT NO.  
1000106733

SCALEDATE  
07/09/2021

DRAWING NO.  
HTD-P-501

SHEET 98 OF 99



- KEY NOTES:
- SUBMERSIBLE SUMP PUMP 1/2 HP, 115 VOLT, 1,750 RPM, 2" DISCHARGE CONNECTION
  - CHECK VALVE
  - 115V, SINGLE PHASE (1Ø) CONTROL SYSTEM WITH BUILT-IN AUDIBLE AND VISUAL ALARM FOR WHEN PUMP DOES NOT RUN DUE TO OIL IN PIT OR HIGH LIQUID ALARM. PROVIDE SILENCING BUTTON FOR AUDIBLE ALARM BUILT INTO PANEL. PANEL SHALL HAVE ADDITIONAL CONTACT FOR A REMOTE ALARM LOCATION. LIGHTS FOR OIL SPILL, POWER, HIGH LIQUID LEVEL, OVERLOAD, & PUMP RUN.
  - JUNCTION BOX SHALL BE PROVIDED WITH MULTI-PIN CONNECTOR AND CORD OF REQUIRED LENGTHS TO REACH PANEL.
  - ALL PUMP PRESSURE DISCHARGE PIPING SHALL BE PROTECTED WITH TAPECOAT CORROSION PROTECTION TAPE AND PROVIDED WITH HEAT TRACING WHEN PIPE IS BELOW FREEZING. IN ADDITION, DISCHARGE PIPING SHALL CONNECT TO THE SITE DRAINAGE SYSTEM (CONNECTION TO BE DETERMINED BY MNR).
  - OIL-MINDER CABLES: POWER CABLE, PROBE CABLE, HIGH- LIQUID ALARM CABLE AND PUMP-ON FLOAT CABLE.
  - HIGH-LIQUID ALARM FLOAT WITH CLAMP DEVICE TO MOUNT TO PUMP DISCHARGE PIPING.
  - PUMP-ON FLOAT
  - PROVIDE A MINIMUM FIVE FEET EXTRA OF EACH CABLE (SLACK) ROLLED CLAMPED TO THE DISCHARGE PIPE TO ALLOW FOR THE REMOVAL OF THE PUMP FROM THE PIT.
  - HEAT TRACING
  - PROVIDE LINK SEAL OR EQUAL AT WALL PENETRATION.

1  
601

HYDRAULIC ELEVATOR SUMP PUMP DETAIL

NOT TO SCALE

100% RFC SUBMISSION

DESIGNED	AD																																																																																																																																																																																																																																																																																																																																																																																																																																																																																																																																																																																																																																																																																																																																																																																																																																																																																																																																																																																																																																																																																																																																																																																																																																																																																																																																																																																																																
----------	----	--	--	--	--	--	--	--	--	--	--	--	--	--	--	--	--	--	--	--	--	--	--	--	--	--	--	--	--	--	--	--	--	--	--	--	--	--	--	--	--	--	--	--	--	--	--	--	--	--	--	--	--	--	--	--	--	--	--	--	--	--	--	--	--	--	--	--	--	--	--	--	--	--	--	--	--	--	--	--	--	--	--	--	--	--	--	--	--	--	--	--	--	--	--	--	--	--	--	--	--	--	--	--	--	--	--	--	--	--	--	--	--	--	--	--	--	--	--	--	--	--	--	--	--	--	--	--	--	--	--	--	--	--	--	--	--	--	--	--	--	--	--	--	--	--	--	--	--	--	--	--	--	--	--	--	--	--	--	--	--	--	--	--	--	--	--	--	--	--	--	--	--	--	--	--	--	--	--	--	--	--	--	--	--	--	--	--	--	--	--	--	--	--	--	--	--	--	--	--	--	--	--	--	--	--	--	--	--	--	--	--	--	--	--	--	--	--	--	--	--	--	--	--	--	--	--	--	--	--	--	--	--	--	--	--	--	--	--	--	--	--	--	--	--	--	--	--	--	--	--	--	--	--	--	--	--	--	--	--	--	--	--	--	--	--	--	--	--	--	--	--	--	--	--	--	--	--	--	--	--	--	--	--	--	--	--	--	--	--	--	--	--	--	--	--	--	--	--	--	--	--	--	--	--	--	--	--	--	--	--	--	--	--	--	--	--	--	--	--	--	--	--	--	--	--	--	--	--	--	--	--	--	--	--	--	--	--	--	--	--	--	--	--	--	--	--	--	--	--	--	--	--	--	--	--	--	--	--	--	--	--	--	--	--	--	--	--	--	--	--	--	--	--	--	--	--	--	--	--	--	--	--	--	--	--	--	--	--	--	--	--	--	--	--	--	--	--	--	--	--	--	--	--	--	--	--	--	--	--	--	--	--	--	--	--	--	--	--	--	--	--	--	--	--	--	--	--	--	--	--	--	--	--	--	--	--	--	--	--	--	--	--	--	--	--	--	--	--	--	--	--	--	--	--	--	--	--	--	--	--	--	--	--	--	--	--	--	--	--	--	--	--	--	--	--	--	--	--	--	--	--	--	--	--	--	--	--	--	--	--	--	--	--	--	--	--	--	--	--	--	--	--	--	--	--	--	--	--	--	--	--	--	--	--	--	--	--	--	--	--	--	--	--	--	--	--	--	--	--	--	--	--	--	--	--	--	--	--	--	--	--	--	--	--	--	--	--	--	--	--	--	--	--	--	--	--	--	--	--	--	--	--	--	--	--	--	--	--	--	--	--	--	--	--	--	--	--	--	--	--	--	--	--	--	--	--	--	--	--	--	--	--	--	--	--	--	--	--	--	--	--	--	--	--	--	--	--	--	--	--	--	--	--	--	--	--	--	--	--	--	--	--	--	--	--	--	--	--	--	--	--	--	--	--	--	--	--	--	--	--	--	--	--	--	--	--	--	--	--	--	--	--	--	--	--	--	--	--	--	--	--	--	--	--	--	--	--	--	--	--	--	--	--	--	--	--	--	--	--	--	--	--	--	--	--	--	--	--	--	--	--	--	--	--	--	--	--	--	--	--	--	--	--	--	--	--	--	--	--	--	--	--	--	--	--	--	--	--	--	--	--	--	--	--	--	--	--	--	--	--	--	--	--	--	--	--	--	--	--	--	--	--	--	--	--	--	--	--	--	--	--	--	--	--	--	--	--	--	--	--	--	--	--	--	--	--	--	--	--	--	--	--	--	--	--	--	--	--	--	--	--	--	--	--	--	--	--	--	--	--	--	--	--	--	--	--	--	--	--	--	--	--	--	--	--	--	--	--	--	--	--	--	--	--	--	--	--	--	--	--	--	--	--	--	--	--	--	--	--	--	--	--	--	--	--	--	--	--	--	--	--	--	--	--	--	--	--	--	--	--	--	--	--	--	--	--	--	--	--	--	--	--	--	--	--	--	--	--	--	--	--	--	--	--	--	--	--	--	--	--	--	--	--	--	--	--	--	--	--	--	--	--	--	--	--	--	--	--	--	--	--	--	--	--	--	--	--	--	--	--	--	--	--	--	--	--	--	--	--	--	--	--	--	--	--	--	--	--	--	--	--	--	--	--	--	--	--	--	--	--	--	--	--	--	--	--	--	--	--	--	--	--	--	--	--	--	--	--	--	--	--	--	--	--	--	--	--	--	--	--	--	--	--	--	--	--	--	--	--	--	--	--	--	--	--	--	--	--	--	--	--	--	--	--	--	--	--	--	--	--	--	--	--	--	--	--	--	--	--	--	--	--	--	--	--	--	--	--	--	--	--	--	--	--	--	--	--	--	--	--	--	--	--	--	--	--	--	--	--	--	--	--	--	--	--	--	--	--	--	--	--	--	--	--	--	--	--	--	--	--	--	--	--	--	--	--	--	--	--	--	--	--	--	--	--	--	--	--	--	--	--	--	--	--	--	--	--	--	--	--	--	--	--	--	--	--	--	--	--	--	--	--	--	--	--	--	--	--	--	--	--	--	--	--	--	--	--	--	--	--	--	--	--	--	--	--	--	--	--	--	--	--	--	--	--	--	--	--	--	--	--	--	--	--	--	--	--	--	--	--	--	--	--	--	--	--	--	--	--	--	--	--	--	--	--	--	--	--	--	--	--	--	--	--	--	--	--	--	--	--	--	--	--	--	--	--	--	--	--	--	--	--	--	--	--	--	--	--	--	--	--	--	--	--	--	--	--	--	--	--	--	--	--	--	--	--	--	--	--	--	--	--	--	--	--	--	--	--	--	--	--	--	--	--	--	--	--	--	--	--	--	--	--	--	--	--	--	--	--	--	--	--	--	--	--	--	--	--	--	--	--	--	--	--	--	--	--	--	--	--	--	--	--	--	--	--	--	--	--	--	--	--	--	--	--	--	--	--	--	--	--	--	--	--	--	--	--	--	--	--	--	--	--	--	--	--	--	--	--	--	--	--	--	--	--	--	--	--	--	--	--	--	--	--	--	--	--	--	--	--	--	--	--	--	--	--	--	--	--	--	--	--	--	--	--	--	--	--	--	--	--	--	--	--	--	--	--	--	--	--