

GENERAL NOTES:

- A. ALL WORK SHALL COMPLY WITH ALL LOCAL AND STATE CODES AND AUTHORITIES HAVING JURISDICTION.
- B. THE CONTRACTOR SHALL SECURE AND PAY FOR ALL REQUIRED PERMITS AND ARRANGE ALL REQUIRED INSPECTIONS.
- C. THE CONTRACTOR SHALL COORDINATE HIS WORK WITH OTHER CONTRACTORS AND TRADES.
- D. THESE DRAWINGS, AS PREPARED, ARE DIAGRAMMATIC BUT SHALL BE FOLLOWED AS CLOSELY AS CONSTRUCTION OF THE PROJECT AND THE TRADES WILL PERMIT. EQUIPMENT LOCATIONS INDICATED ARE APPROXIMATE. COORDINATE EXACT LOCATIONS AND REQUIRED CLEARANCES WITH EQUIPMENT SUPPLIER AND ALL TRADES PRIOR TO INSTALLATION.
- E. THE CONTRACTOR SHALL FURNISH AND INSTALL ALL THE EQUIPMENT INDICATED WITHIN THE MECHANICAL DRAWINGS UNLESS OTHERWISE NOTED. ALL EQUIPMENT SHALL BE UL LISTED, VERIFY LOCATION AND DIMENSIONS IN THE FIELD PRIOR TO FABRICATION AND / OR INSTALLATION.
- F. ALL ROOF PENETRATIONS SHALL BE AT THE CONTRACTOR'S EXPENSE. COORDINATE WITH OWNER'S ROOFING CONTRACTOR SO AS NOT TO VOID ANY EXISTING ROOF WARRANTIES.
- G. EACH UNIT GENERATING CONDENSATE SHALL BE PROVIDED WITH A CONDENSATE DRAIN WITH EXTERNAL, 4" DEEP P-TRAP. EXTEND DRAIN TO A ROOF MOUNTED SPLASH PAD OR AN ACCEPTABLE LOCATION REQUIRED BY CODE.
- H. DUCT SIZES SHOWN ON DRAWINGS ARE CLEAR INSIDE DIMENSION.
- I. ALL METAL DUCT AND AIR DISTRIBUTION DEVICES SHALL BE INSULATED WITH R-6, 75 DENSITY FOIL-BACKED INSULATION WITH FIRE AND SMOKE RATING 25-50).
- J. ALL DUCTWORK SHALL BE FABRICATED, INSTALLED, SEALED, AND INSULATED PER THE LATEST ISSUE OF SMACNA LOW-VELOCITY DUCT MANUAL.
- K. UNLESS OTHERWISE NOTED, ALL SUPPLY TAKEOFFS SHALL HAVE A MANUAL VOLUME CONTROL DAMPER.
- L. ALL FLEX DUCT SHALL BE UL LISTED, R-6. FOIL-BACKED, CLASSIFIED AS A CLASS 1 AIR DUCT. MAXIMUM LENGTH IS TO BE
- M. 12'-0" PER DROP OR PER LOCAL CODE.
- N. THE CONTRACTOR SHALL COORDINATE DIFFUSER LOCATIONS ON SITE WITH THE MOST RECENT REFLECTED CEILING PLAN.
- O. THE CONTRACTOR IS TO MAKE ALL LOW-VOLTAGE WIRING CONNECTIONS FOR ALL HVAC EQUIPMENT INCLUDING TEMPERATURE CONTROLS, ROOF TOP UNITS, SMOKE DETECTORS AND CONTACTOR PANEL.
- P. PROVIDE AND INSTALL SMOKE DUCT DETECTORS IN EACH AIR CONDITIONING UNIT RETURN DUCT GREATER THAN 2000 CFM. CONTRACTOR SHALL PROVIDE INTERCONNECTION AND WIRE TO THE FIRE ALARM CONTROL PANEL IF REQUIRED. DUCT DETECTORS SHALL HAVE REMOTE TEST STATIONS LOCATED IN THE OFFICE NEAR THE RESPECTIVE THERMOSTATS. VERIFY CODE REQUIREMENTS FOR DUCT DETECTORS IN BOTH THE SUPPLY AND RETURN AIR STREAMS.
- Q. THE ENTIRE INSTALLATION SHALL BE GUARANTEED FREE OF DEFECTS AND CONTRACTOR SHALL REPAIR AND / OR REPLACE ANY DEFECTIVE MATERIALS OR EQUIPMENT AT NO COST TO THE OWNER FOR A MINIMUM PERIOD OF ONE YEAR FROM THE DATE OF ACCEPTANCE BY ARCHITECT OR ENGINEER.
- R. ALL WORK SHALL BE SUBJECT TO THE ACCEPTANCE AND APPROVAL OF THE ARCHITECT AND OWNER. THE ARCHITECT SHALL BE NOTIFIED OF ANY AND ALL DISCREPANCIES BETWEEN FIELD CONDITIONS AND THE CONTRACT DOCUMENTS BEFORE PROCEEDING WITH THAT PORTION OF THE WORK. FAILURE OF PROPER NOTIFICATION DOES NOT RELIEVE THE CONTRACTOR. THE CONTRACTOR SHALL CORRECT ANY AND ALL WORK ARISING FROM SUCH FAILURE TO COORDINATE DISCREPANCIES TO THE SATISFACTION OF THE ARCHITECT WITHOUT ADDITIONAL COST TO THE OWNER.
- S. THE CONTRACTOR SHALL, UPON COMPLETION OF PROJECT, PERFORM A COMPLETE TEST AND BALANCE OF ALL EQUIPMENT. PROVIDE A WRITTEN REPORT TO THE ARCHITECT. ALL CAPACITIES MUST BE SET TO WITHIN ±10% OF AMOUNTS INDICATED ON THE FLOOR PLAN AND SCHEDULES.

DIFFUSER AND REGISTER SCHEDULE

UNIT ID	MANUFACTURER	MODEL	SIZE	DESCRIPTION	REMARKS
A	METAFIRE	570006 AL (01) WHITE 570006 AL (02) BLACK	24x24	Aluminum, 2 cone Square Face Diffuser With Round Neck, Aluminum, With Adjustable Discharge And Radial Opposed Blade Dampers, Model DS.	1,2,3,4,5
B	METAFIRE	570006 AL (01) WHITE 570006 AL (02) BLACK	12x12	Aluminum, 2 cone Square Face Diffuser With Round Neck, Aluminum, With Adjustable Discharge And Radial Opposed Blade Dampers, Model DS.	1,2,3,4,5
C	METAFIRE	RH 6 (02) WHITE RH 6 (02) BLACK	24x24	Aluminum Return Grille - 0.667" Spacing Set At 45 Degree Angle, Volume Control Opposed Blade Dampers, Model OSDA.	1,2,4
E	METAFIRE	RH 6 (02) WHITE RH 6 (02) BLACK	24x24	Aluminum Return Grille - 0.667" Spacing Set At 45 Degree Angle, Volume Control Opposed Blade Dampers, Model OSDA.	1,2,4

- NOTES:
- Maximum Noise Criterion Rating = 35 DBA.
 - Painted Enamel Finish, Color To Be Selected By Architect.
 - Diffusers Shall Be 4-Way Blow/Whisper Unless Otherwise Indicated On Plans.
 - Mounting Frame Type Shall Be Coord. With Ceiling / Wall Construction Type.
 - Neck Size Shall Be As Scheduled.
- Round Neck Size Schedule
- | | |
|-----------------|---------|
| 18" To 300 Cfm | 8" DIA |
| 301 To 225 Cfm | 8" DIA |
| 226 To 375 Cfm | 10" DIA |
| 376 To 600 Cfm | 12" DIA |
| 601 To 900 Cfm | 14" DIA |
| 901 To 1300 Cfm | 15" DIA |

KEYED NOTES:

- CONNECT AIR DISTRIBUTION DUCT TO ROOF MOUNTED UNIT EQUIPMENT AS NECESSARY. PROVIDE TRANSITION IN CURB AS REQUIRED FOR UNIT CONNECTION.
- EXHAUST FOR OVENS AND TOASTERS. HOOD IS REQUIRED AT THE SANDWICH STATION. HOOD IS OPTIONAL AT THE BACK OF HOUSE OVEN. IF A HOOD IS REQUIRED FOR OVEN BY LOCAL JURISDICTION PROVIDE TYPE-II "HEAT ONLY" HOOD. RUN SHEETMETAL DUCT FROM CONNECTION ON HOOD TO RESPECTIVE EXHAUST FAN. OFFSET AND TRANSITION AT CONNECTIONS AS NEEDED. VERIFY DIMENSIONS PRIOR TO FABRICATION OR INSTALLATION. USE FACTORY MANUFACTURED PIPE AND FITTINGS ONLY. VERIFY LOCATION ON SITE WITH MOST RECENT KITCHEN PLANS.
- PROVIDE PROGRAMMABLE THERMOSTAT WITH LOCKING COVER. LOCATE THERMOSTAT IN MANAGER'S OFFICE. PROVIDE REMOTE SENSOR LOCATED 72" ABOVE FINISHED FLOOR NEAR LOCATION INDICATED. SEAL WALL OPENINGS WITH CAULK. COORDINATE LOCATION ON SITE WITH GENERAL CONTRACTOR AND EQUIPMENT. AVOID LOCATING NEAR OR ABOVE SOURCES OF HEAT.
- CONCENTRIC VENT LINE FOR COMBUSTION AIR INTAKE / EXHAUST FROM GAS FIRED EQUIPMENT TO ROOF TERMINATION KIT. ROUTE PIPING FROM RESPECTIVE UNIT TO LOCATION INDICATED ON ROOF PLAN. ROUTE PIPING WITH MINIMAL AMOUNT OF BENDS AND MINIMUM LENGTH AS REQUIRED BY RESPECTIVE UNIT MANUFACTURER'S REQUIREMENTS.
- TOILET ROOM EXHAUST AIR DUCT UP THROUGH ROOF. TERMINATE ON ROOF WITH MUSHROOM CAP AIR RELIEF VENT WITH INSECT SCREEN.
- HOOD CONTROLLER UNIT. COORDINATE WITH CAPTIVE AIRE ON THE REQUIRED LOCATION AND CONNECTION REQUIREMENTS. COORDINATE WITH ELECTRICAL CONTRACTOR FOR ELECTRICAL CONNECTIONS.
- ROOM TEMPERATURE SENSOR FOR THE CONTROL OF THE HOODS. COORDINATE WITH CAPTIVE AIRE ON THE REQUIRED LOCATION AND CONNECTION REQUIREMENTS.

1 H.V.A.C PLAN

1/4"=1'-0"

ROOF TOP UNIT SCHEDULE

UNIT ID	MANUFACTURER	EFFICIENCY	MODEL	AREA SERVED	NOMINAL TONS	SUPPLY FAN	GAS HEAT	COOLING	ELECTRICAL	EER	IEER	SEER	OPERATING WEIGHT	NOTES
TOTAL	OUTSIDE	STATIC	INPUT	OUTPUT	TOTAL	SENSIBLE	AMBIENT	ENTERING	STAGES	VOLTS	PHASE	MCA	MOC	
CFM	AIR	PRESSURE	MBH	MBH	MBH	MBH	DB	DB / WB						
RTU-1	EXISTING ROOFTOP UNIT, 10.0 TONS, 4000 CFM - VERIFY EXACT SIZE, LOCATION AND CONDITION IN FIELD													
RTU-2	TRANE	HIGH	WCO923RMA H080A1A	BACK	3	1200	240	0.75	80	64	37			

- NOTES:
- All Equipment Must Be High Efficient, Meeting Or Exceeding The Brands Minimum Requirements.
 - Electrical Connection To Be Single Point And To Be Through The Bottom Of The Unit
 - Provide Disconnect Switch And An Unpowered GFC Receptacle.
 - 14" Roof Curb - Contractor Shall Field Insulate, Ship ASAP Ahead Of The Unit.
 - Condensate Drain With 2" Deep Vented Trap Discharge To Splash Block On Roof.
 - Cabinet With 1/2" Fiberglass Insulation.
 - Unit Shall Be Complete With Gas Heating Section, Gas Regulator To Receive 7" Gas Pressure From Main.
 - Dry Bulb Economizer With Barometric Relief / 25% Manual Outside Air Damper Assembly With Hood (zone 'c' Only).
 - Provide 8-wire, 24 Vac, Automatic Changerover, 2-stage Heat / Cool, Remotely Programmable Thermostat.
 - Remote Sensors Shall Be Provided In Space Wired Back To Programmable, 24 Hour, 7 Day, Thermostats.
 - Anti Short Cycle Timer.
 - Throwaway 2" Filters (merv 8).
 - Where Required, Provide Low Ambient Cooling Capability Down To 0 Degrees F.
 - Provide All Compressors With 5 Year Warranty.
 - Return And / Or Supply Air Smoke Detector - Unit Mounted
 - VFD Supply Fan
 - If Required: Carrier - Unit Installed with "Humidi-Mizer" dehumidification system. Provide humidity sensor next to thermostat.
 - If Required: Trane - Hot gas reheat with associated controls and sensors for dehumidification control.
- DBI HVAC NATIONAL ACCOUNTS
- DBI HAS NATIONALLY ACCOUNTED TWO HVAC MANUFACTURERS TO SUPPLY ROOFTOP EQUIPMENT FOR THE BRAND. CONTACT INFORMATION IS AS NOTED FOR EACH OF THE MANUFACTURERS BELOW.
- TRANE, INC.
ACCOUNT REPRESENTATIVE:
JONATHAN RALYS
P: 978.737.3814
F: 978.737.3921
E: JONATHAN.RALYS@TRANE.COM
WEB: WWW.TRANE.COM
- ADDITIONAL ROOFTOP UNIT INFORMATION, CONTACT INFORMATION AND PRICING / ORDERING INFORMATION CAN BE FOUND ON THE NATIONAL ACCOUNT PORTION OF THE DBI CONSTRUCTION EXTRANET.

AIR BALANCE

UNIT	AREA SERVED	SUPPLY AIR	OUTSIDE AIR	RETURN AIR	EXHAUST AIR
RTU-1	FRONT	4000 CFM	800 CFM	3200 CFM	-
RTU-2	BACK	1200 CFM	240 CFM	960 CFM	-
EF-1	TOASTER	-	-	-	525 CFM
EF-2	OVEN	-	-	-	500 CFM
EF-3,4	RESTROOM	-	-	-	110 CFM
TOTAL:		5200 CFM	1040 CFM	4160 CFM	1135 CFM
BUILDING PRESSURE:				-95 CFM	NEGATIVE

HOODS

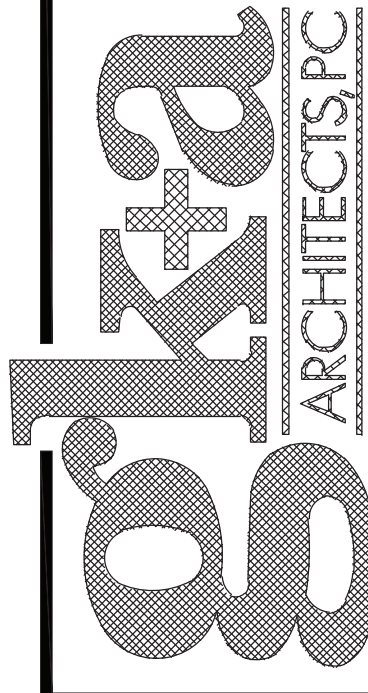
UNIT ID	MANUFACTURER	LENGTH	MODEL	SERVICE	COOKING TEMPERATURE	EXHAUST AIR	COLLAR	SP	CONSTRUCTION	WEIGHT
HOOD-1	CAPTIVE-AIRE	5'-3"	3624 VHB	TOASTER / TURBO	700 DEG F	525	10"	0.056	430 STAINLESS STEEL	172 LBS
HOOD-2	CAPTIVE-AIRE	5'-0"	4824 VHB	MINI-RACK OVEN	700 DEG F	500	10"	0.168	430 STAINLESS STEEL	237 LBS

FAN SCHEDULE

UNIT ID	MANUFACTURER	HOOD LENGTH	MODEL	CFM	TYPE	DRIVE	FAN RPM	S.P. (IN. W.G.)	HP	VOLTS	PHASE	SERVICE	INTERLOCKED WITH	NOTES / ACCESSORIES
EF-1	CAPTIVE-AIRE	5'-3"	DUI3HFA	525	ROOF	DIRECT	1212	0.5	1/3	120	1	TOASTER AND TURBO	HOOD CONTROL	1,2,3,4,5,6,7,8
EF-2	CAPTIVE-AIRE	5'-0"	DUI2HFA	500	ROOF	DIRECT	1500	0.5	1/4	120	1	MINI-RACK OVEN	HOOD CONTROL	1,2,3,4,5,6,7,8
EF-3	GREENIECK	-	SP-A110	110	CEILING	DIRECT	950	0.125	FRAC	120	1	RESTROOMS	LIGHTS	1,4,6,8

- NOTES / ACCESSORIES:
- Bird screen
 - Weather Proof Disconnect Switch
 - Variable Speed Control
 - Speed Control Switch
 - Thermal Overload Protection
 - Gravity Backdraft Damper
 - Roof Gurb
 - AMCA Seal & UL Certified

36 Ames Avenue
Rutherford, NJ 07070
Tel. 201.896.0333
Fax. 201.896.9469
email@gkanda.biz



Gary Kliesch and Associate Architects

Rev.	No.	Drawing Issues / Revisions	Date

NJ: A13332	NJCID: 21D0002900	NY: 025618	CT: ARI0009367
FL: AR95762	DE: SE-0007765	WI: 11180-5	MD: 14129
PA: RA-015112B	SC: 8935	GA: RA-019883	MA: 10810
VA: 401016373	IL: 001-023586	NC: 11736	WV: 4569

Gary Kliesch
AIA, NCARB, NCID

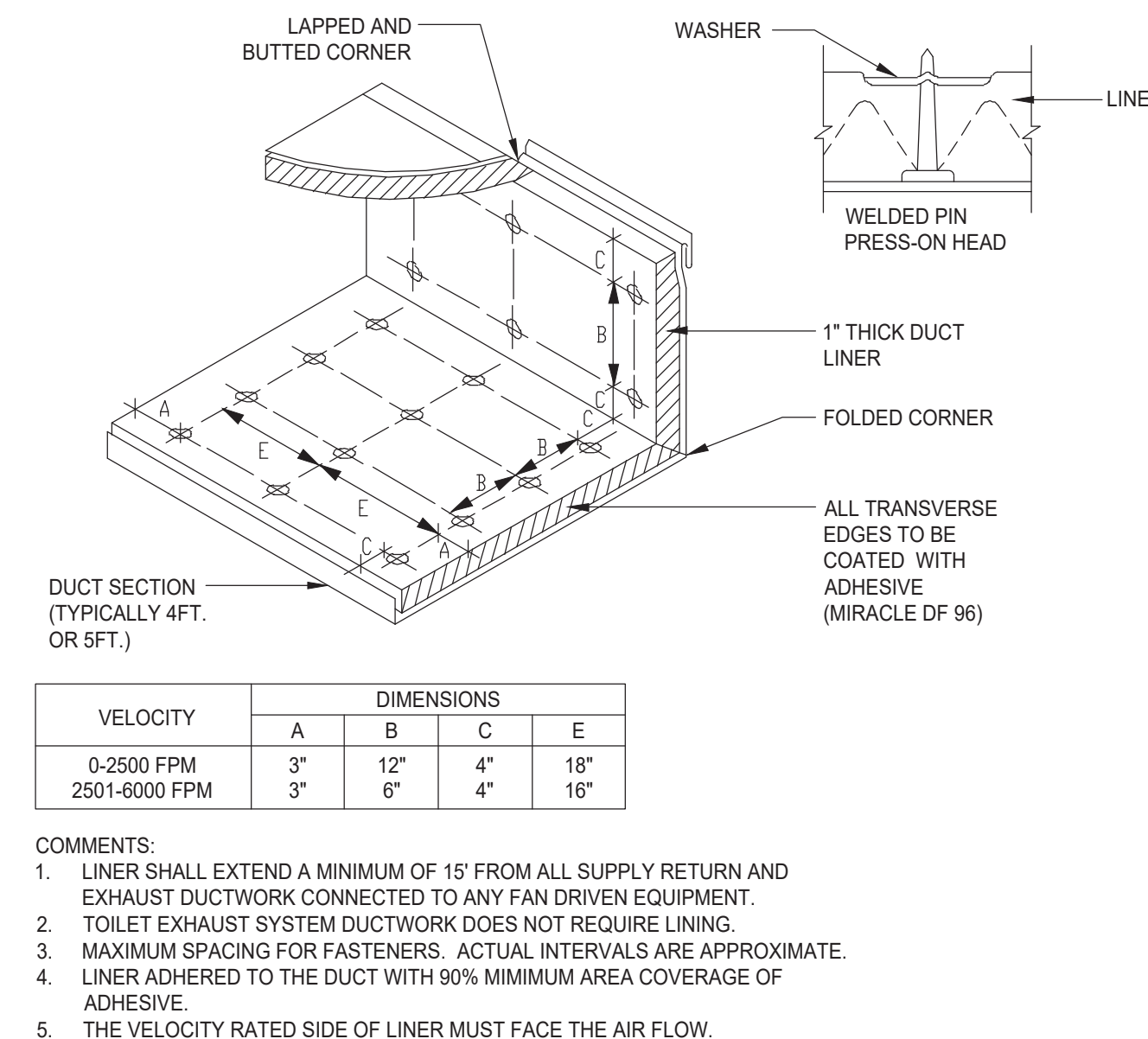
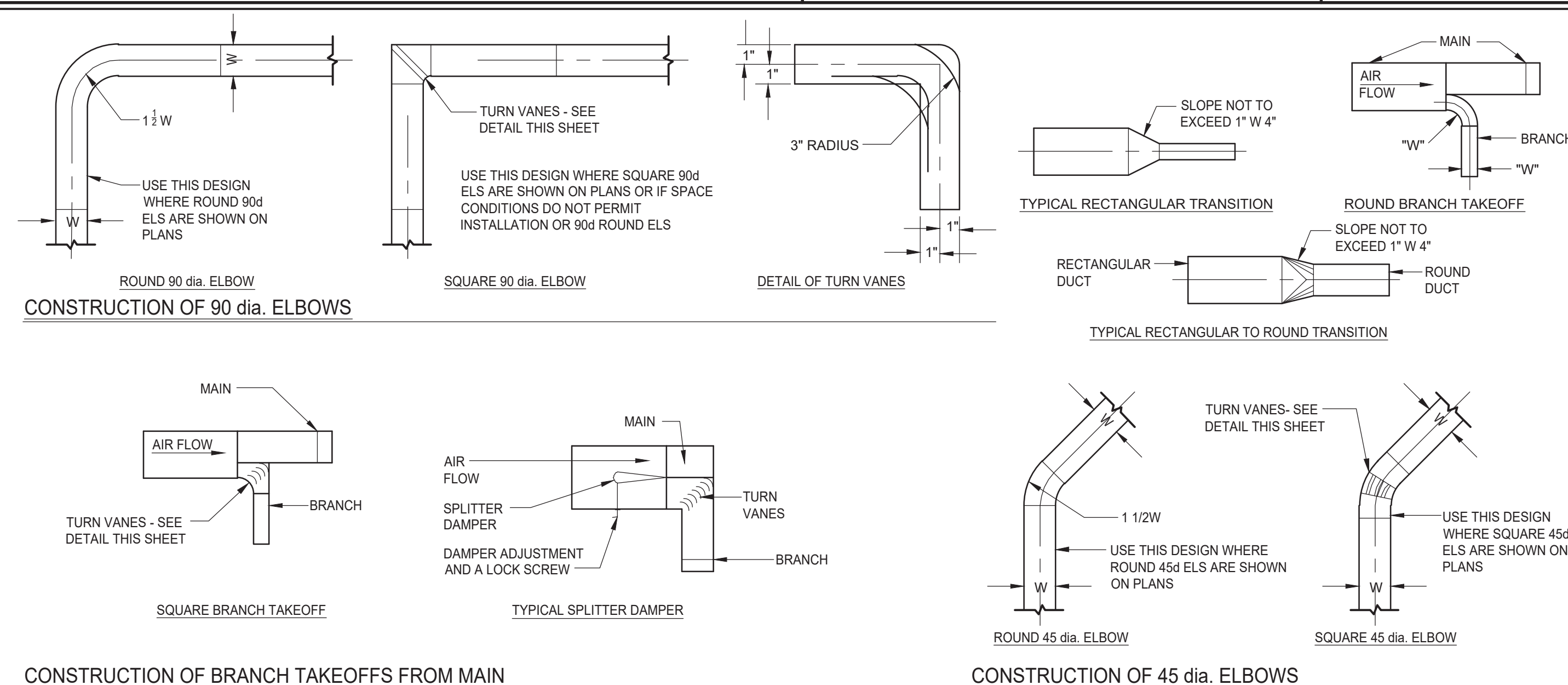
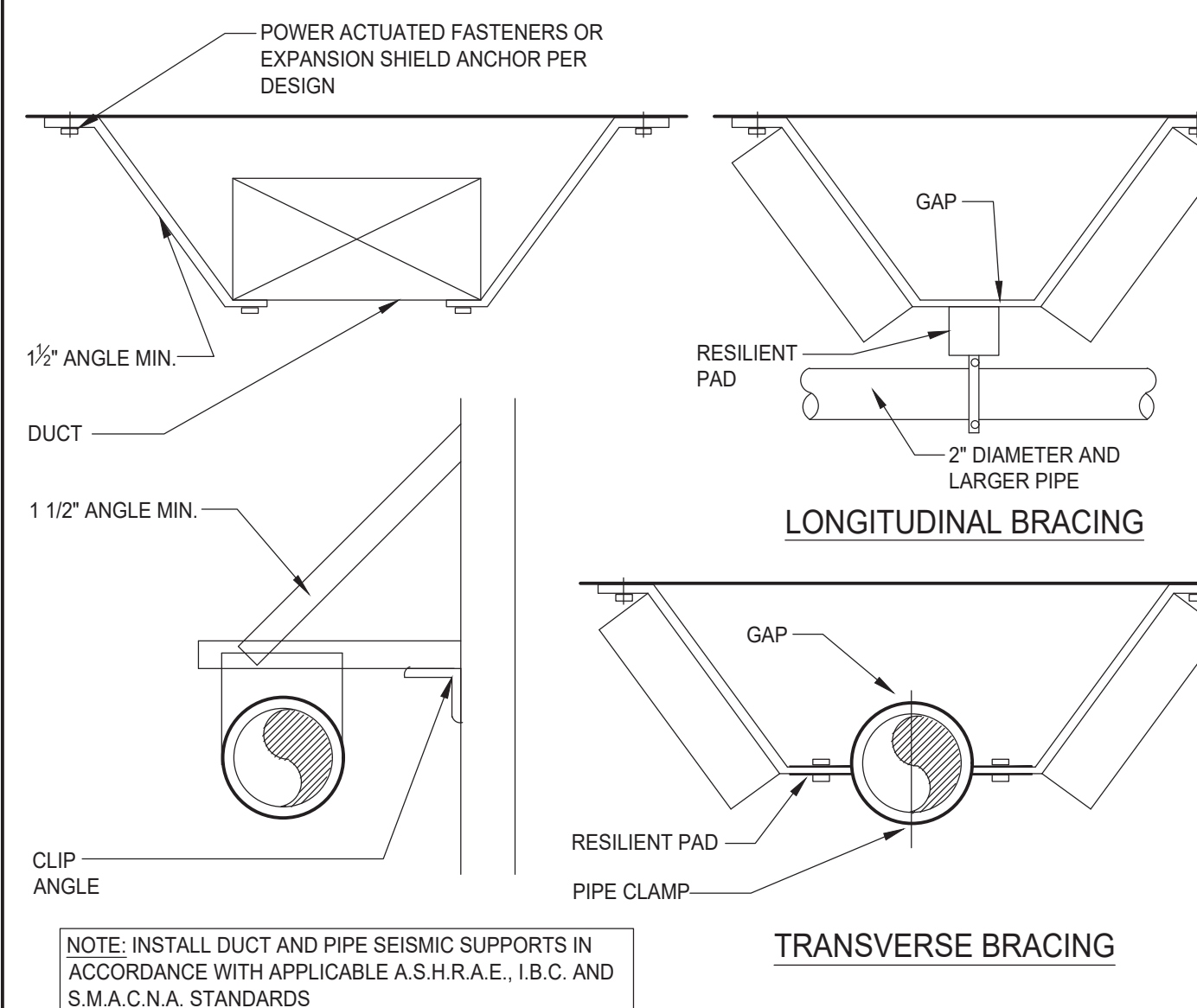
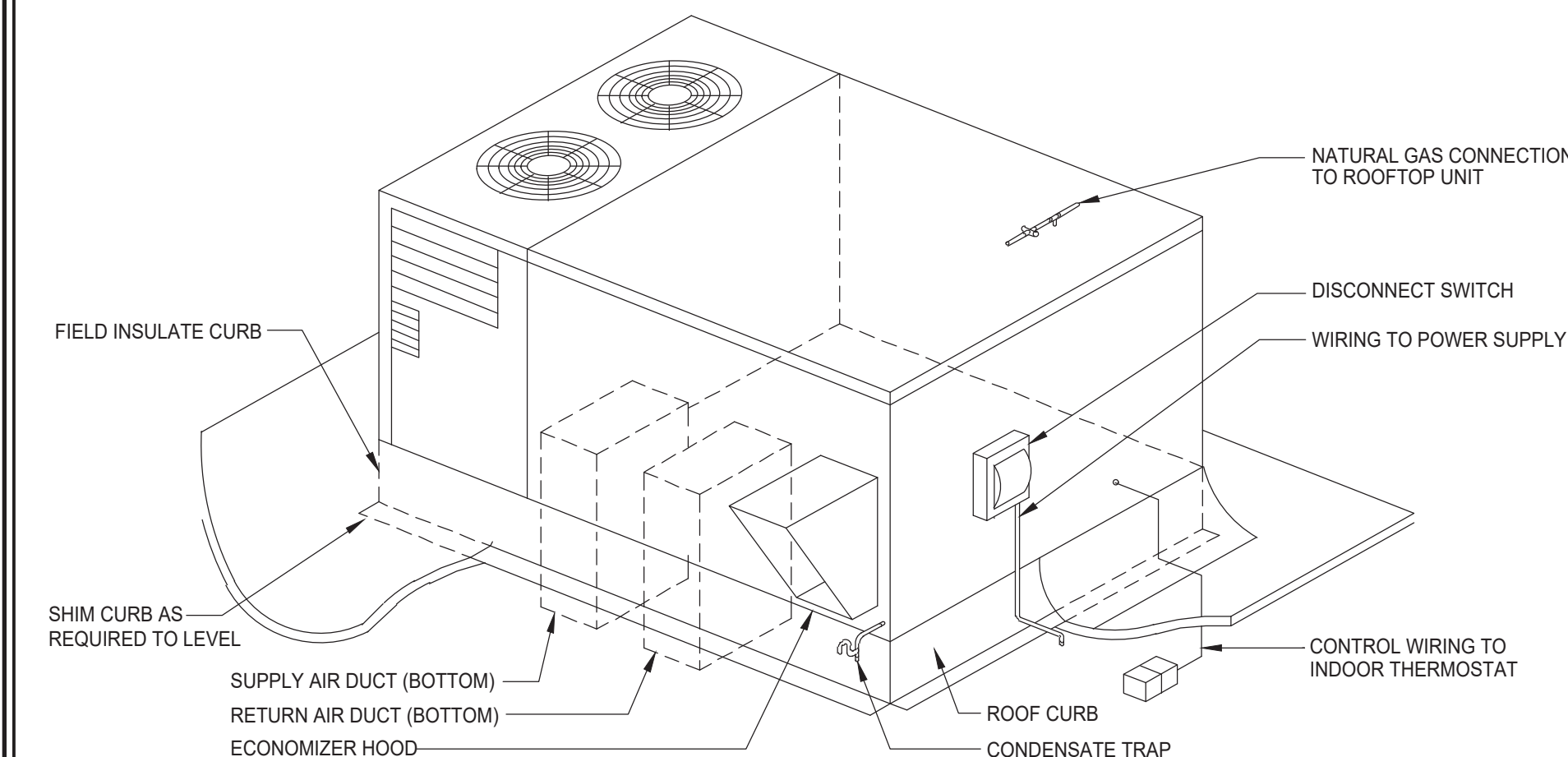
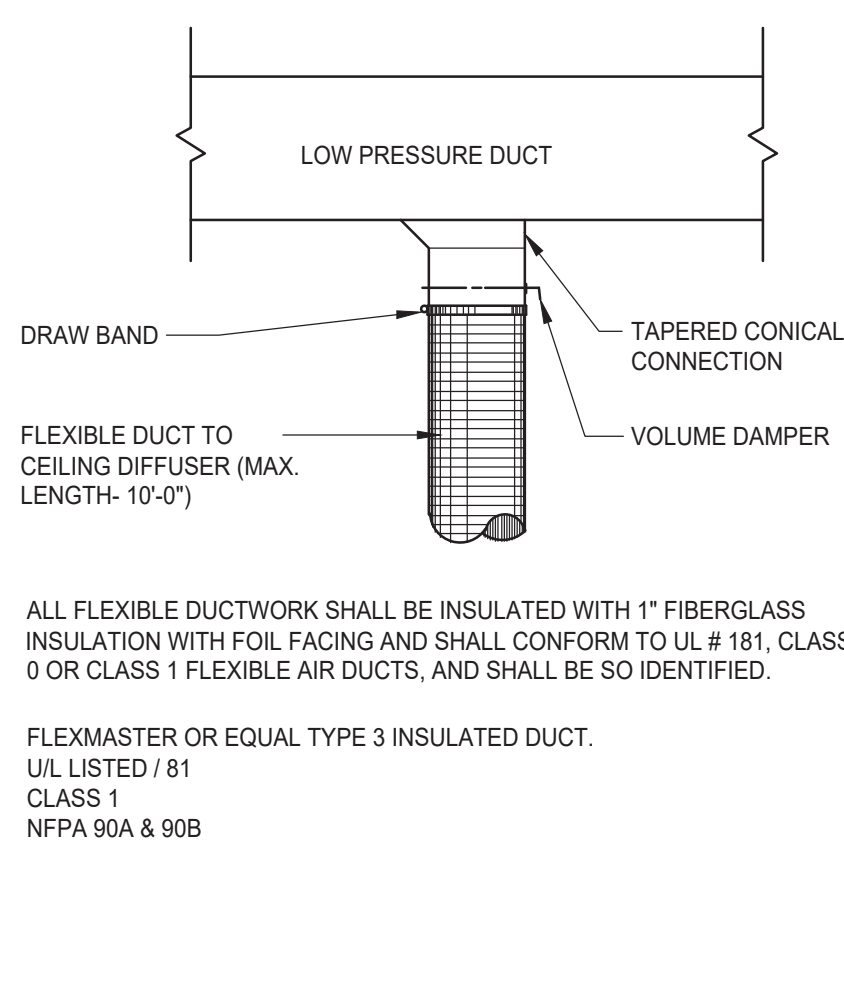
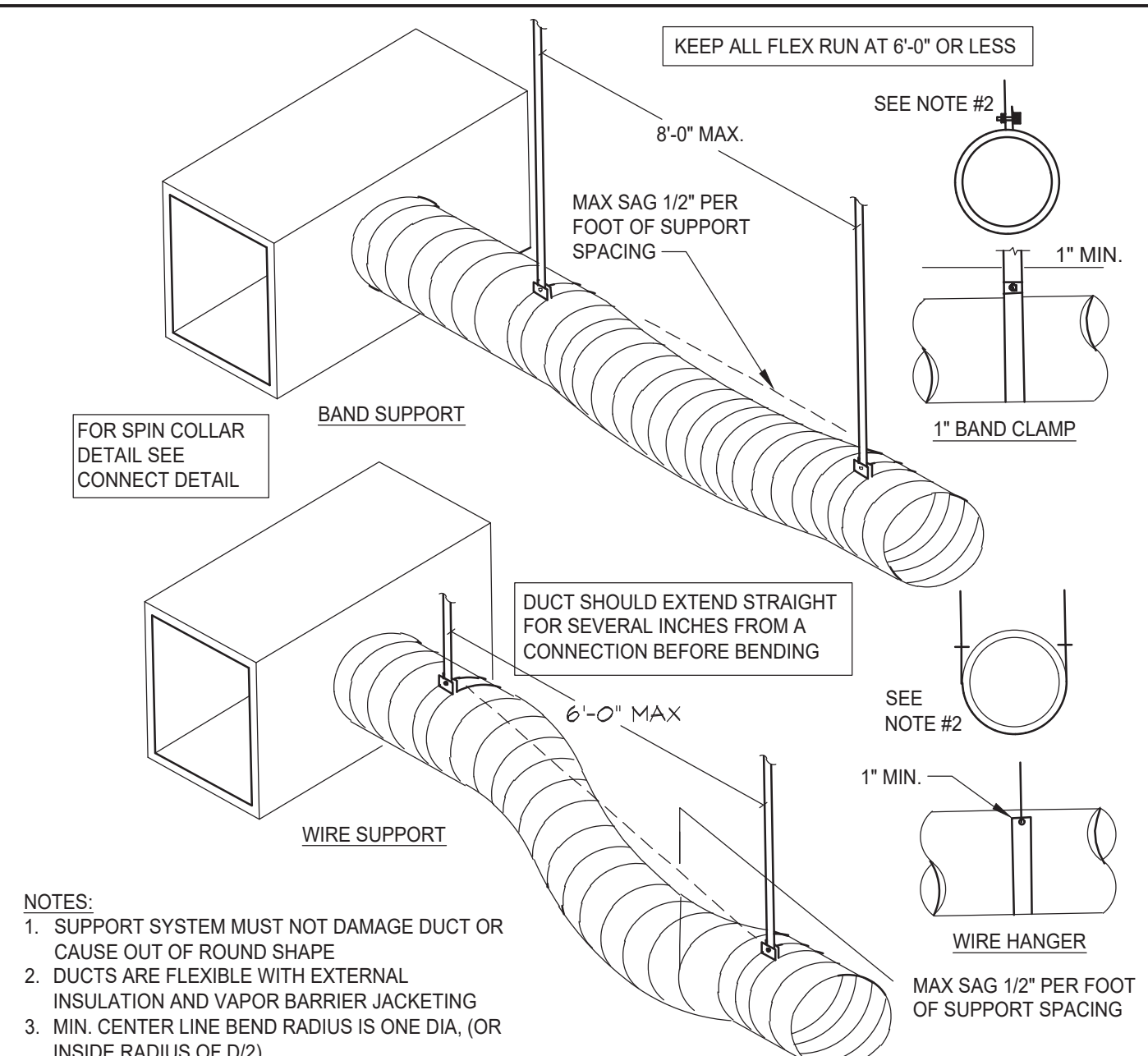
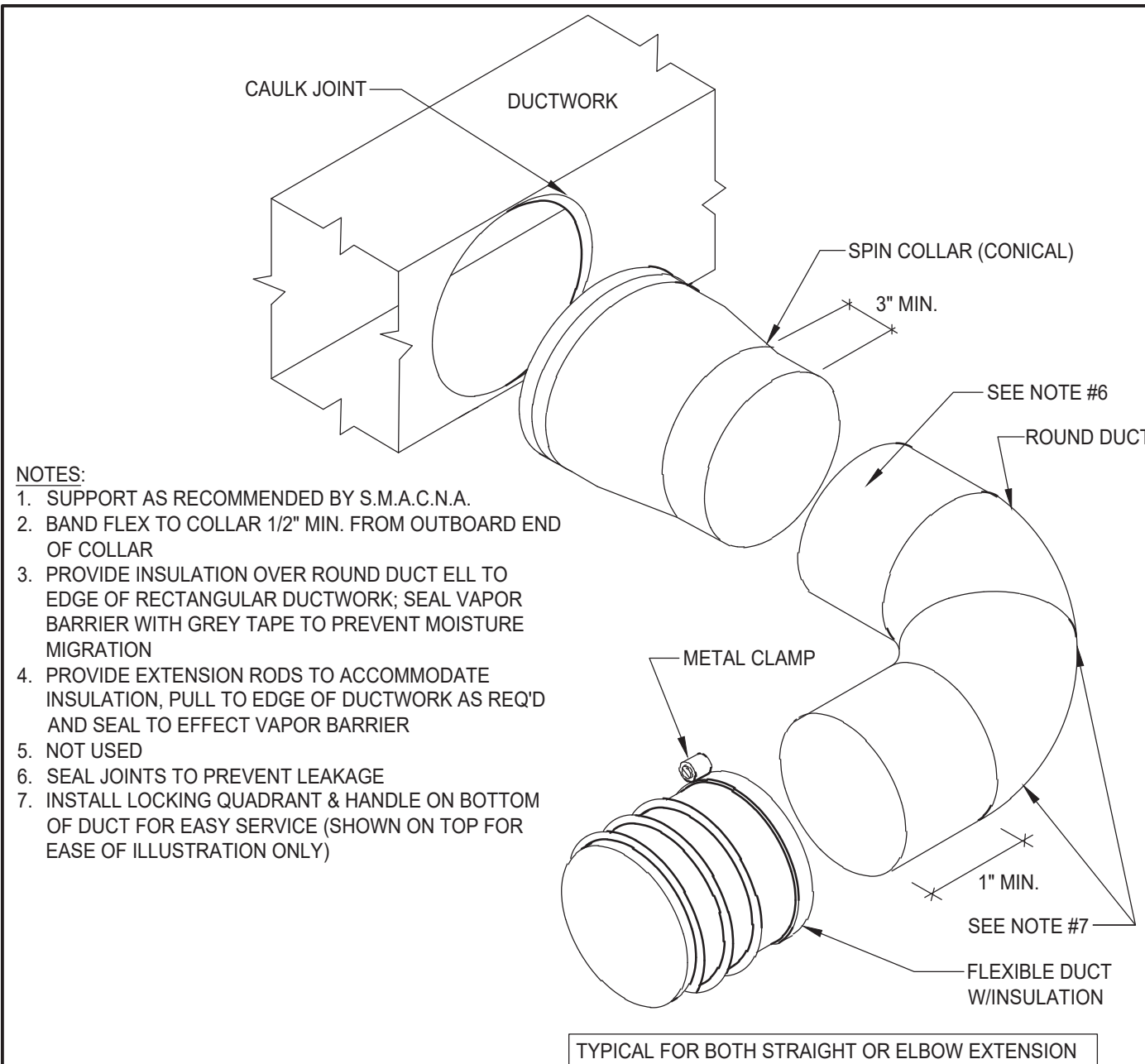
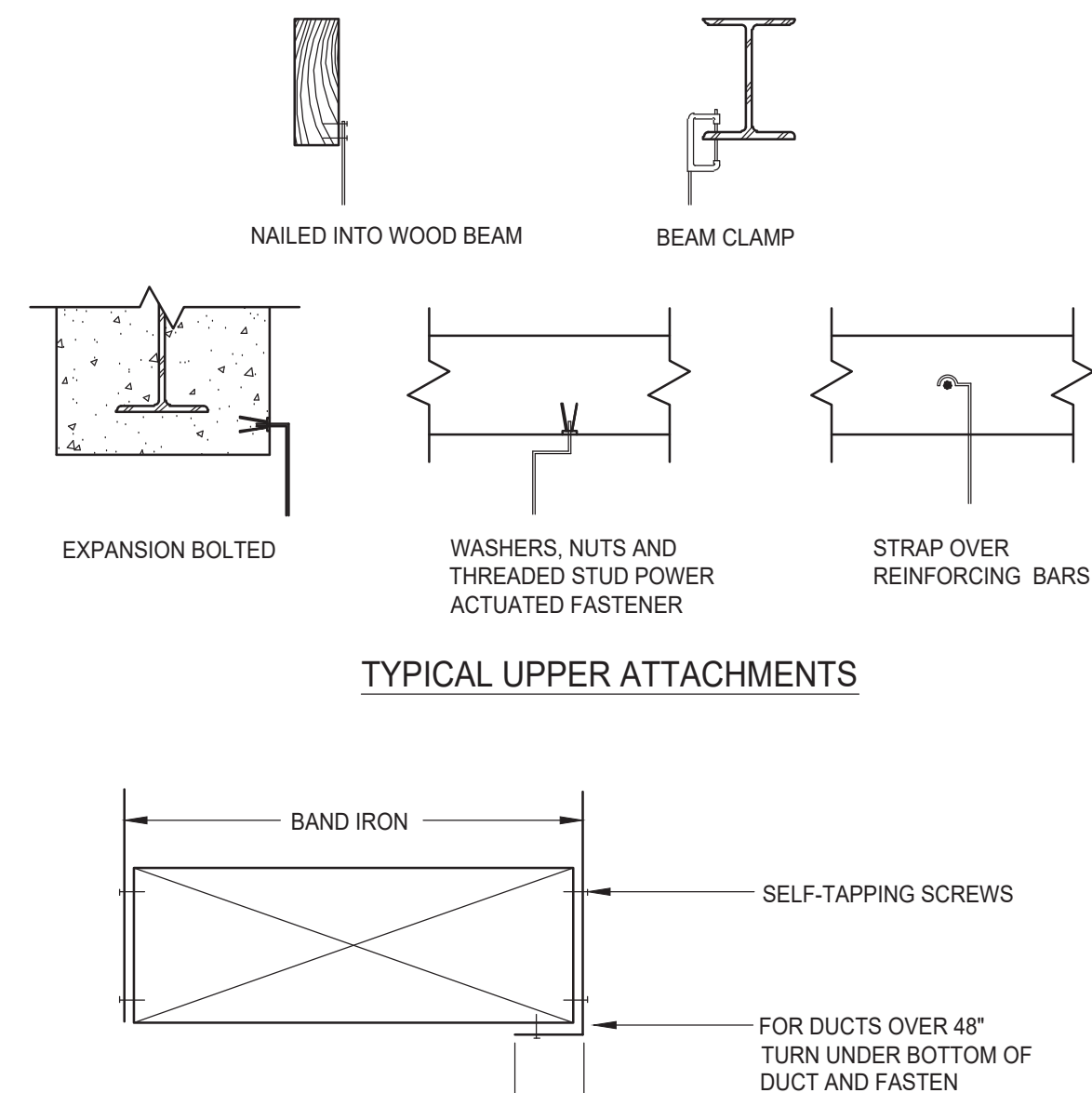
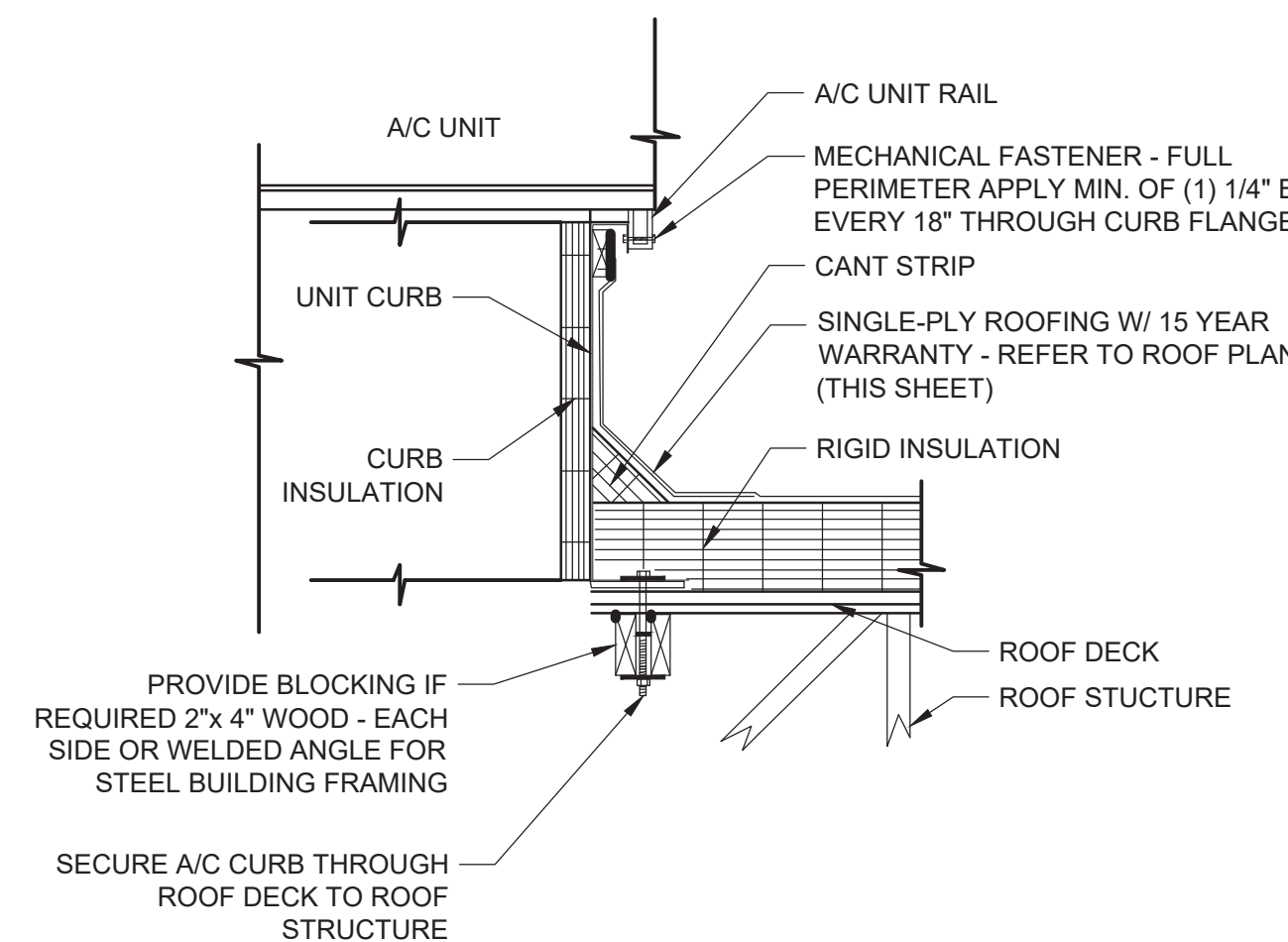
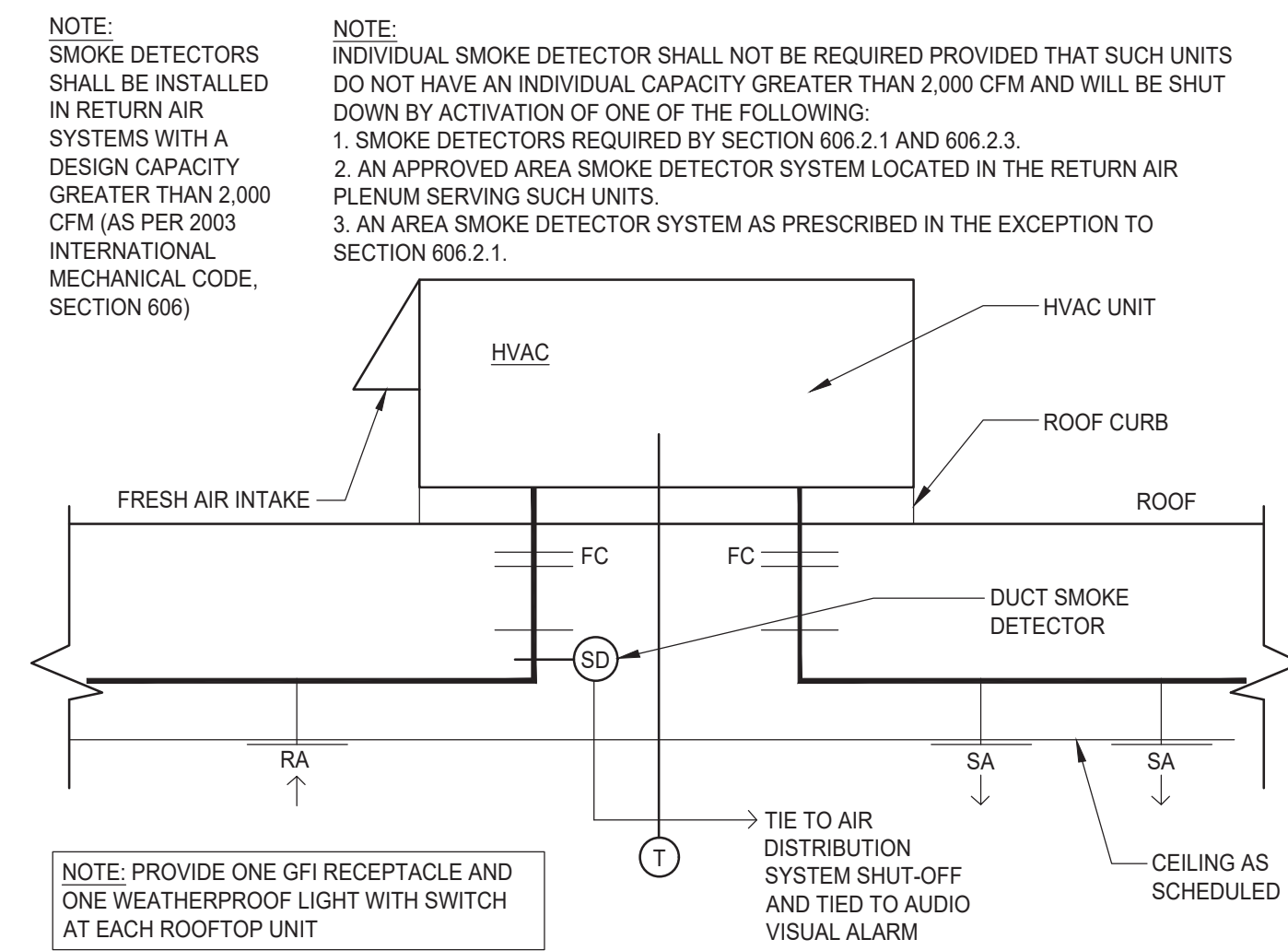
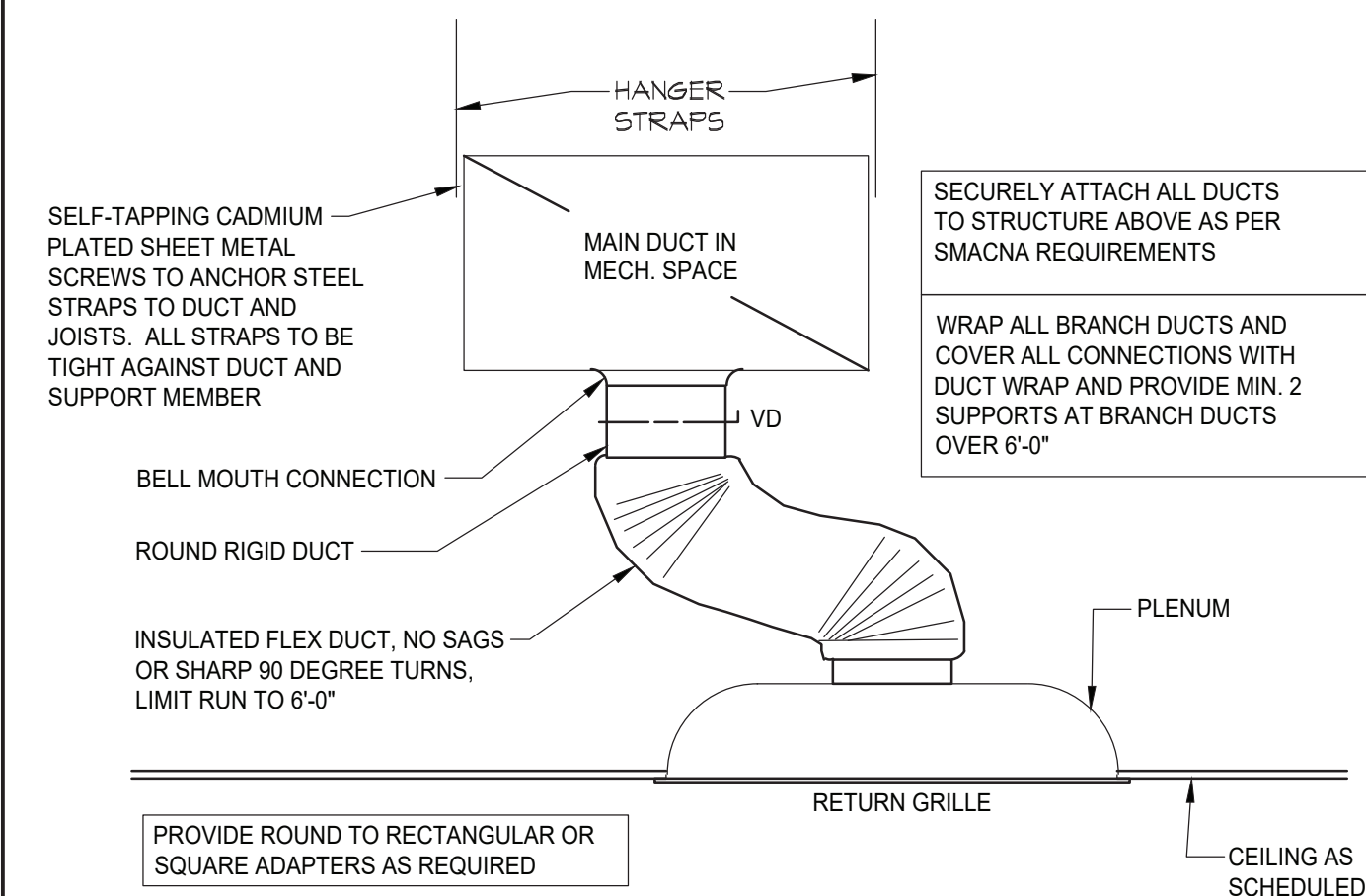
Proposed Alteration of:

DUNKIN'

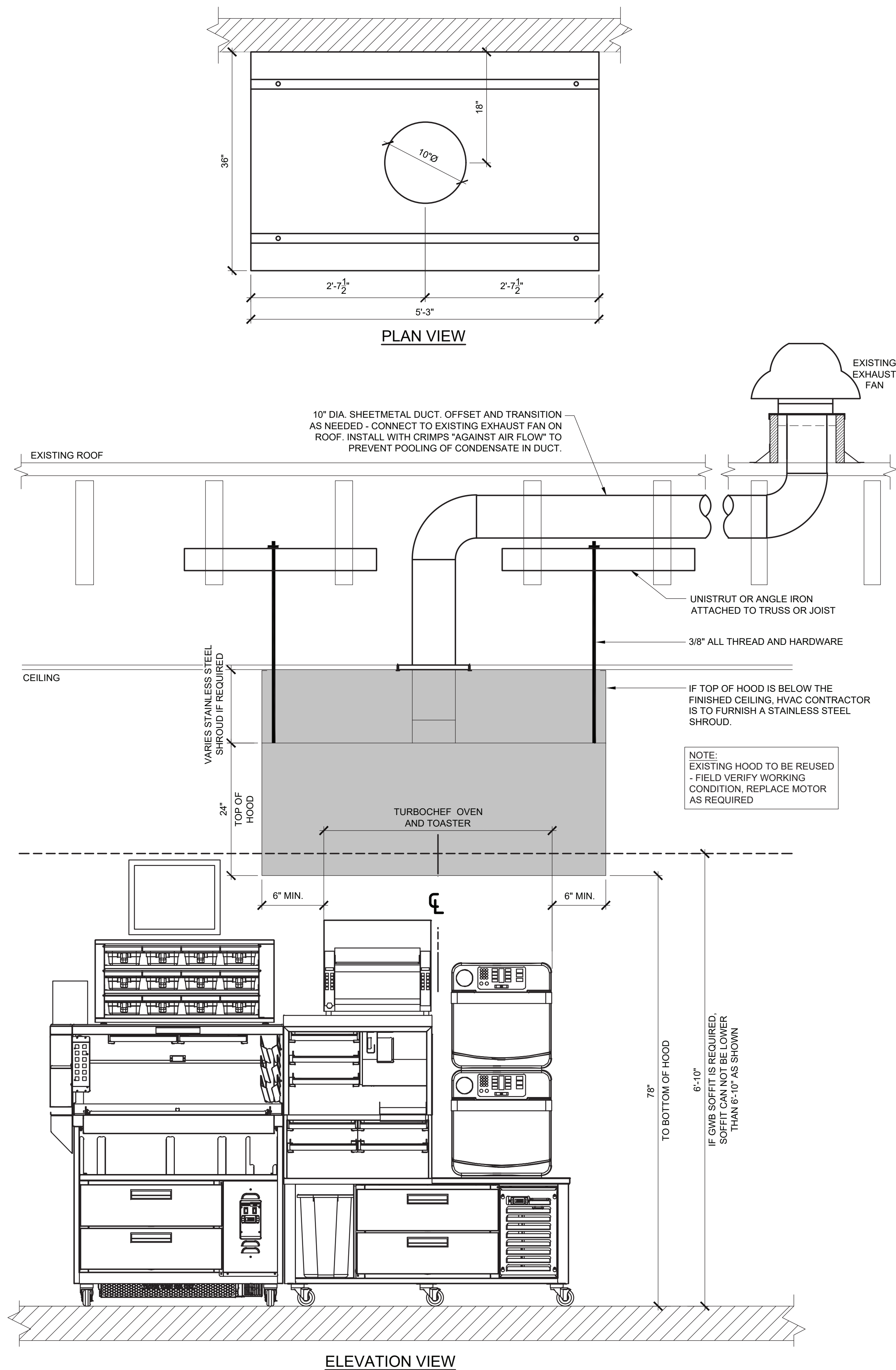
40 S. Route 9W
West Haverstraw, NY
PC #302235

OMNI

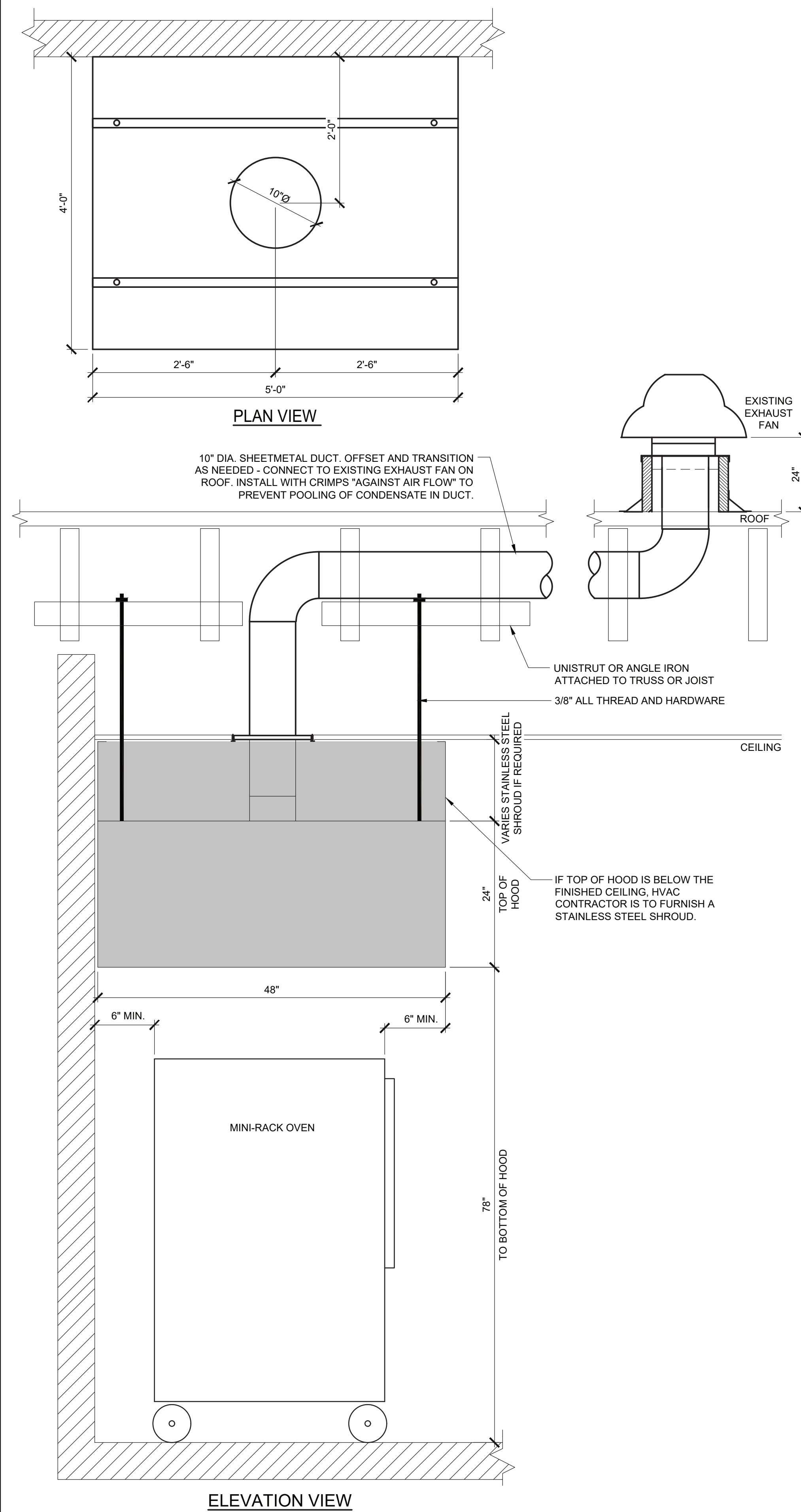
Drawing Title: MECHANICAL PLAN, NOTES, MECHANICAL SCHEDULES	Date: 08/17/21	Dwg No. M 1.0
Drawn By: A.T.	Checked By: C.F.	Job No: 19-242
		1 of 3

[illegible]

NJ: A1 0332
NY: 025618
FL: AR95702
WI: 11190-5
PA: RA-015112-B SC: 8935
D.C.: ARC-01839 MA-10610
GA: RA-013983
VA: 401016373
NC: I1736 WV: 4569 IL: 00123586



HOOD INFORMATION									
MANUFACTURER	MODEL	LENGTH	MAX. COOKING TEMP.	EXHAUST PLENUM				CONSTRUCTION	WEIGHT
				TOTAL EXH. CFM	RISER(S)				
					DIAMETER	CFM	S.P.		
CAPTIVE-AIRE	3624 VHB	5'-3"	700 DEG.	525	10"	525	0.056	430 STAINLESS STEEL	172 LBS



HOOD INFORMATION									
MANUFACTURER	MODEL	LENGTH	MAX. COOKING TEMP.	EXHAUST PLENUM				CONSTRUCTION	WEIGHT
				TOTAL EXH. CFM	RISER(S)				
					DIAMETER	CFM	S.P.		
CAPTIVE-AIRE	4824 VHB	5'-0"	700 DEG.	500	10"	500	0,168	430 STAINLESS STEEL	237 LBS

GENERAL HOOD INSTALLATION NOTES:

- A. ALL ELECTRICAL "FIELD" CONNECTIONS AND RELATED INTERCONNECTIONS BY ELECTRICAL CONTRACTOR.
- B. ALL PLUMBING "FIELD" CONNECTIONS AND RELATED INTERCONNECTIONS BY PLUMBING CONTRACTOR.
- C. ALL ASSOCIATED HANGER MATERIALS BY INSTALLING CONTRACTOR.
- D. ALL LIGHTS SHOWN ON RALLIED BY THE MANUFACTURER, AND FACTORY PREWIRED PER THE PLANS, INTERCONNECTIONS BETWEEN HOODS AND TO SWITCHES BY ELECTRICAL CONTRACTOR.
- E. SEISMIC RESTRAINTS ARE RESPONSIBILITY OF INSTALLING CONTRACTOR.
- F. INSTALLING CONTRACTOR ASSUMES ALL RELATED RESPONSIBILITY FOR VERIFICATION OF DIMENSIONAL DATA CONTAINED ON THESE DOCUMENTS FOR ACCURACY, INTEGRATION, AND ADMINISTRATION OF CODE REQUIREMENTS IN EFFECT PRIOR TO ANY RELEASE FOR PRODUCTION OF EQUIPMENT SHOWN.
- G. SIGNED AND "APPROVED" COPIES OF THIS DOCUMENT MUST BE RECEIVED BY THE FACTORY PRIOR TO COMMENCEMENT OF FABRICATION.
- H. NOMINAL HOOD DIMENSIONS AS SHOWN ON DRAWINGS.
- I. THE HOODS INDICATED SHALL BE CAPTIVE-AIRE MODEL VHB OR APPROVED EQUIV. THE HOOD SHALL BE SINGLE WALL TYPE HOOD WITH NO BUILT-IN MAKE-UP AIR CAPABILITIES: THE HOOD COMPONENTS SHALL BE HEAVY FABRICATED 1/2" THICK 304 STAINLESS STEEL, WITH A #3 OR #4 POLISH, ON ALL EXPOSED SURFACES. THE HOOD SHALL BE PROVIDED WITH HANGING ANGLES ON EACH END OF THE HOOD, NOMINAL HOOD DIMENSIONS SHALL BE AS SHOWN ON DRAWINGS.

HOOD CONTROL SEQUENCE OF OPERATIONS

MANUAL CONTROL:

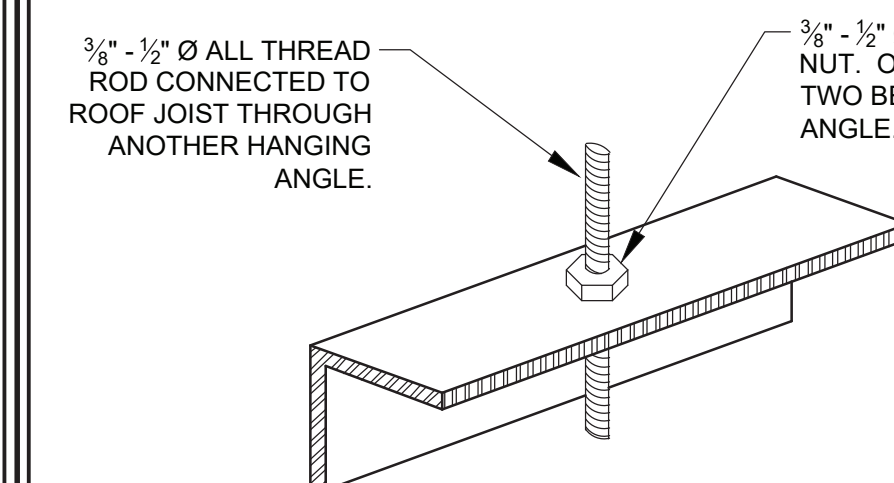
- TO TURN ON THE HOOD SYSTEM, PUSH THE FAN AND LIGHTS BUTTONS ON THE TOUCH SCREEN USER INTERFACE. THE FANS AND LIGHTS WILL TURN ON AND THE INDICATING LIGHTS ADJACENT TO THE BUTTONS WILL ILLUMINATE INDICATING THE FANS AND LIGHTS ARE ON.
- TO TURN OFF THE HOOD SYSTEM, PUSH THE FAN AND LIGHTS BUTTONS ON THE TOUCH SCREEN USER INTERFACE. THE FANS AND LIGHTS WILL TURN OFF AND THE INDICATING LIGHTS ADJACENT TO THE BUTTONS WILL GO OUT INDICATING THE FANS AND LIGHTS ARE OFF.
- THE HOOD WILL REMAIN ON BASED ON DIFFERENTIAL TEMPERATURE BETWEEN THE ROOF, THE HOOD AND THE HOOD TEMPERATURE PROBE. ONCE THE EQUIPMENT COOLS DOWN, THE HOOD WILL SYSTEM WILL TURN OFF AUTOMATICALLY.

AUTOMATIC CONTROL:

- THE HOOD SYSTEM WILL TURN ON AUTOMATICALLY ONCE THE TEMPERATURE WITHIN THE HOOD SYSTEM REACHES A SET TEMPERATURE. THE INDICATOR LIGHT ADJACENT TO THE FANS BUTTON ON THE TOUCH SCREEN USER INTERFACE WILL ILLUMINATE. THE LIGHTS WILL NEED TO BE TURNS ON MANUALLY.
- THE HOOD SYSTEM WILL TURN OFF AUTOMATICALLY AS DESCRIBED ABOVE

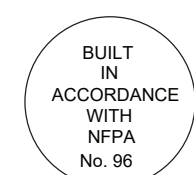
GENERAL:

- THE MECHANICAL CONTRACTOR SHALL COORDINATE WITH CAPTIVE AIRE.
- THE MECHANICAL CONTRACTOR SHALL COORDINATE WITH THE ELECTRICAL CONTRACTOR ON THE REQUIRED WIRING OF THE OF THE HOOD CONTROLS PER THE CAPTIVE AIRE DRAWINGS.



3	HANGING ANGLE DETAIL
NONE	

HOODS SHALL BE
BUILT IN COMPLIANCE WITH



NFPA #96
NSF
UL 710 & ULC710 STANDARDS
E.T.L. LISTED 3054804-001

36 Ames Avenue
Rutherford, NJ 07070
Tel. 201.896.0333
Fax. 201.896.9469
email@gkanda.biz

ka
ARCHITECTS, P.C.

Gary Kliesch and Associate Architects

[illegible]

N.J.: A1 1332
N.Y.: 025618
FL: AR95762
MI: 11180-5
PA: RA-01512-B SC: 8935
D.C.: ARC101639 MA: 10610
GA: RA 013983
VA: A01016373
NC: 11736 WV: 4569

Proposed Alteration of:

Donkin.

40 S. Route 9W
West Haverstraw, NY
PC #302235

OWN

Drawing Title:
SANDWICH STATION AND
MINI-RACK OVEN EXHAUST HOOD
DETAILS, NOTES

Date: 08/17/21	Dwg No. M 3.0
Drawn By: A.T.	
Checked By: C.F.	
Job No: 19-242	3 of 3