

**INTRODUCTION** Function: Provide quality control through testing and monitoring of products as they are produced.

**LOCATION** Location: Locate near Process and Packaging to provide easy access for sampling.

**FINISHES** Finishes: Monolithic floor matching the process area. Flooring should facilitate easy cleanup. Some process floor systems are not adaptable to the non-caustic cleaning used in the Q.C. Lab

**CEILING** Ceiling: Kemlite in stainless steel grid.  
Walls: Non infestation type.

**DOORS** Doors: Doors shall be fiberglass.

**MILLWORK** Millwork: Chemical resistant countertops. Base and wall cabinets for storage.

Vent Hood: Provide vent hood with direct exhaust to atmosphere.



Provide space for compressed gas cylinders and provide anchor supports.

### HVAC

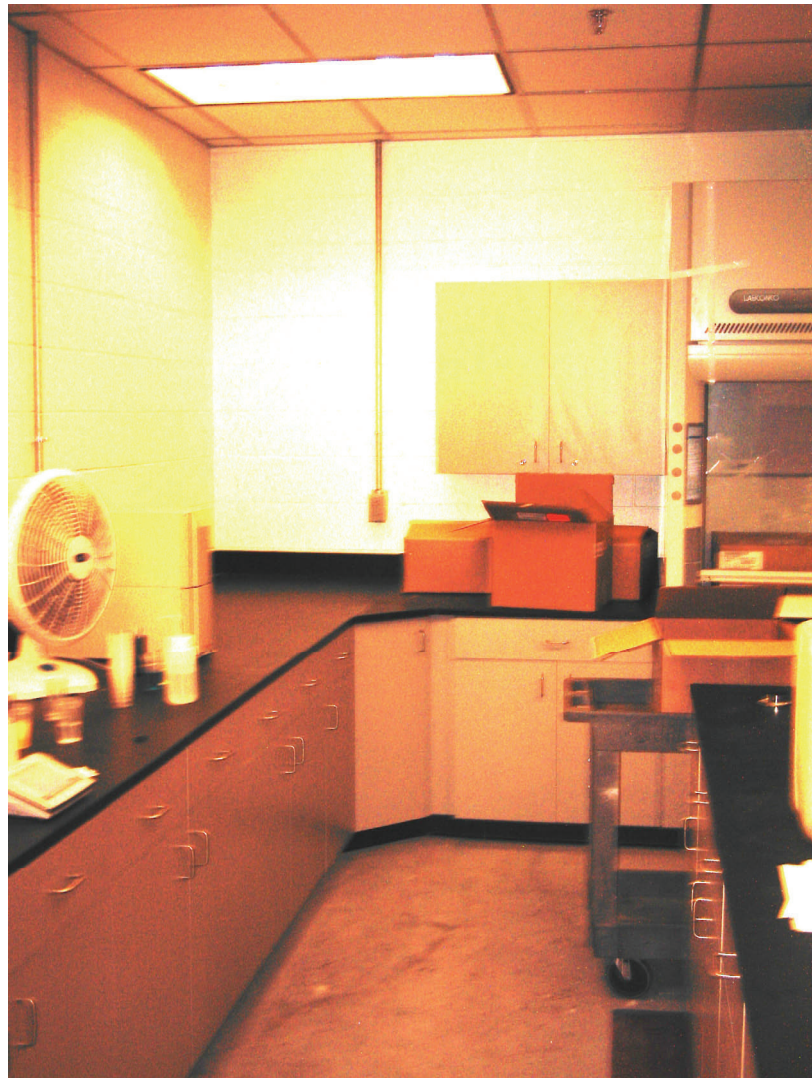
Mechanical: Provide compressed air outlets. Provide outlets above base cabinets to support test equipment. Provide emergency eye wash and shower combo.

### ELECTRICAL

Electrical. Lighting— 2' x 4', 3 lamp, fluorescent, parabolic louver troffer.

Power - Provide multiple outlets above the base cabinets to facilitate test equipment. Provide tombstone type duplex and quad receptacles in island type countertops. Fire alarm horn/strobe units per code.

Conduit. EMT concealed in walls and above ceiling.



**INTRODUCTION**

Function: Provide an unobstructed review and evaluation of the product. Needs to provide a quiet, comfortable, focused atmosphere. All other uses of the room must be suspended during product evaluations. Thus, QC Labs are generally not appropriate.

**LOCATION**

Location: Locate near Process and Packaging to provide easy access for sampling. Adjacent or near the QC is a good location.

**FINISHES**

Finishes: Monolithic floor matching the process area. Flooring should facilitate easy cleanup. Some process floor systems are not adaptable to the non-caustic cleaning used in the Q.C. Lab

**CEILING**

Ceiling: Kemlite in stainless steel grid.

Walls: Non infestation type. Walls will be used for product display.

**DOORS**

Doors: Doors from process into the Q.C. Lab shall be fiberglass. Doors from other spaces into the Q.C. Lab shall be hollow metal doors.

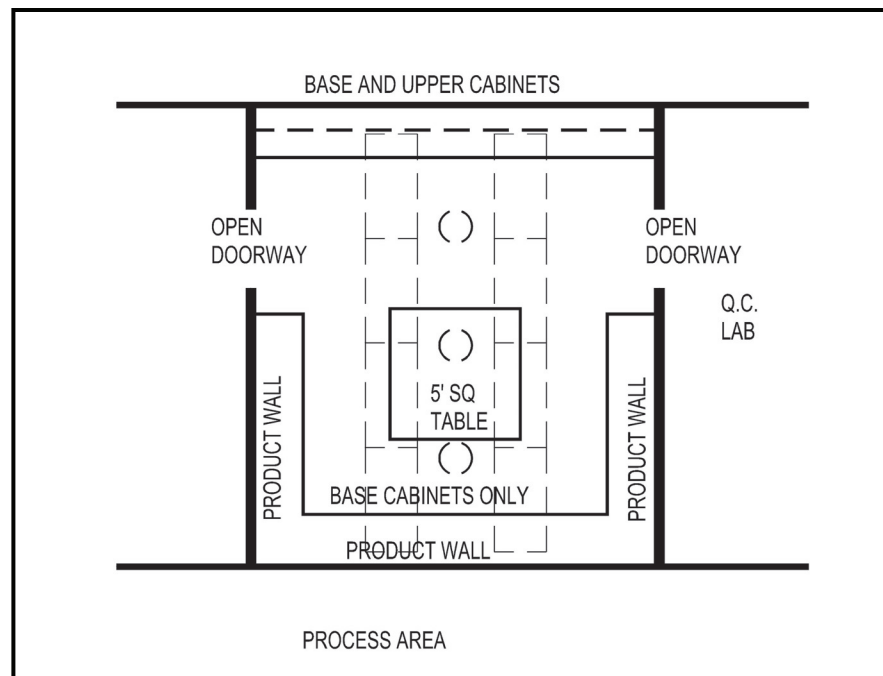
**MILLWORK**

Millwork: Black plastic laminate countertops.

Counters at 42" are required for work space.

A central table, 5 foot square.

Enough cabinets need to be provided for the storage of 1 day of the "Gold Standard" product.troffer providing 50 FC.

**LAYOUT**

**HVAC**

Temperature needs to be office environment.

A sink needs to be available, but not necessarily in the Event Room. Provide in the room if not readily available.

**ELECTRICAL**

Provide OIT computer terminal.

One 110 volt outlet per wall.

Lighting is critical. This requires four light switches.

1. Warm White fluorescent
2. Day Brite Fluorescent
3. Cool white fluorescent
4. Metal halide lights.

The standard room should have:

1. four, four lamp, 4 foot fixtures (warm white),
2. Two, four lamp, 4 foot fixtures split with two Day Brite lamps to one switch and two Cool White lamps to a second switch.
3. The fourth switch shall operate three 100 watt metal halide fixtures.

Lighting level is 70 footcandles.

Fluorescent fixtures to have parabolic lenses.

*Plan view of ceiling in  
event room.*

