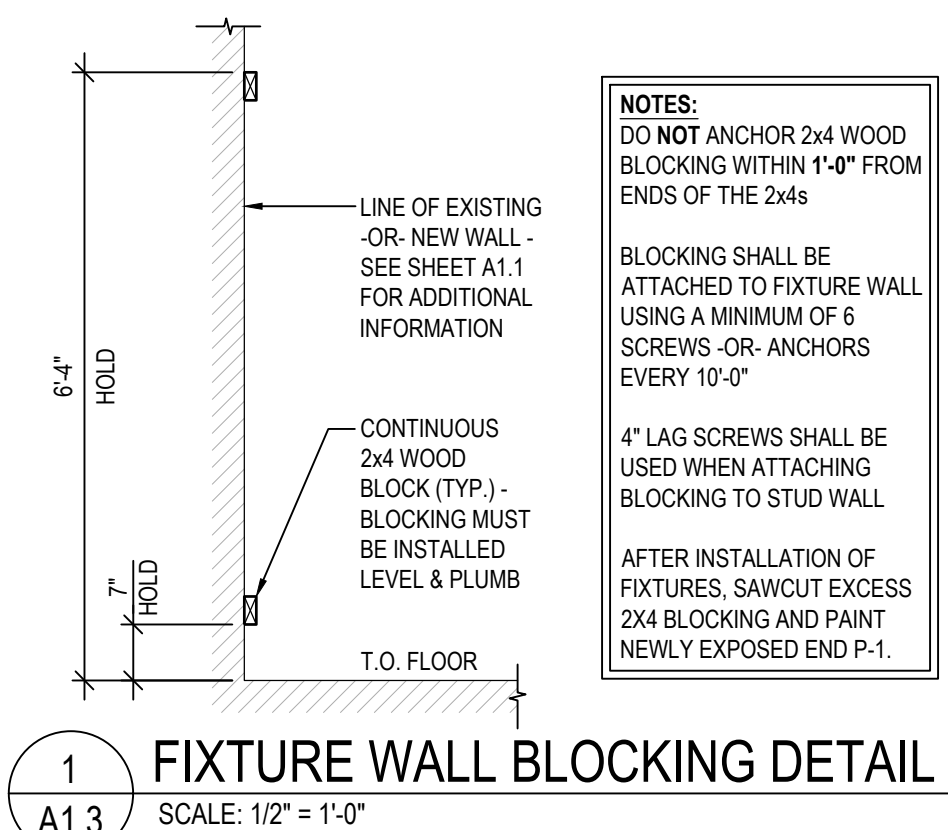


FINISH PLAN
SCALE 3/32" = 1'-0"

FINISH SCHEDULE				
KEY	MATERIAL	MFR.	COLOR	REMARKS
WALL FINISH	P-1 PAINT	SHERWIN - WILLIAMS	SW7006 EXTRA WHITE (EGGSHELL)	UTILIZE PROMAR 200 (0 VOC) - NO SUBSTITUTIONS
	P-2 LATEX PAINT	SHERWIN - WILLIAMS	SW7006 EXTRA WHITE (SEMI-GLOSS)	UTILIZE PROMAR 200 (0 VOC) - NO SUBSTITUTIONS
	P-6 PAINT-PRIMER	SHERWIN - WILLIAMS	WHITE	PREPRITE PROBLOCK PRIMER- NO SUBSTITUTIONS
	P-6A PAINT-PRIMER	SHERWIN - WILLIAMS	WHITE	PROMAR BLOCK FILLER- NO SUBSTITUTIONS
	WC-1 FIBER REINFORCED PLASTIC (FRP) TO CEILING	MARLITE (NO SUBSTITUTIONS)	WHITE FACTORY FINISH	TRIM AND CUT AROUND ALL DISPENSERS & MIRRORS WHICH OVERLAP FRP AND CAULK EDGES. PROVIDE PVC TRIM MOLDING AT WALL BASE, DIVISION SEAMS, INSIDE AND OUTSIDE CORNERS AND EDGES. MITER TRIM AT ALL CORNERS AND CAULK ALL EXPOSED EDGES OF MOLDINGS.
FLOOR FINISH	CON-1 CONCRETE FLOOR SEALANT	HARBOR FREIGHT VENDOR	N/A	GRIND AND POLISH ALL CONCRETE FLOORS AS SPECIFIED ON SHEET A0.3 & A0.4
	LVT-1 BETON - 36" X 36" X 2.5 MM. DRYBACK VINYL TILE	FLOORMAX USA	177 - AGGREGATE	JOINT WHERE VINYL TILE FLOOR MEETS 6" RUBBER BASE TO BE SEALED WITH SILICONE SEALANT. SEE LVT INSTALLATION NOTES ON SHEET A0.2 FOR ADDITIONAL INFORMATION.
	C-1 CARPET TILE	MATWORKS - MONSTER TILE	CHARCOAL	
	C-2 CARPET TILE	MATWORKS - MATSHIELD	CHARCOAL	
BASE	VB-1 6" VINYL BASE	FLOORMAX USA	(BLACK) CB-40	WALL BASE TO BE INSTALLED ON ALL WALLS (EXCEPT AT GLASS / ALUMINUM STOREFRONT) THROUGHOUT SALES AREA AND BEHIND BREAK ROOM CABINETS. SEE PLAN FOR EXTENTS IN STOCK AREA.
	ACT-1 ACOUSTICAL CEILING TILE	ARMSTRONG	WHITE	2' x 4' CORTEGA SQUARE LAY-IN TILE #769 w/ PRELUDE 15/16" EXPOSED TEE GRID.
CEILING	ACT-2 ACOUSTICAL CEILING TILE	NATIONAL GYPSUM	WHITE	2' x 4' GOLD BOND BRAND GRIDSTONE 1/2" FIRE SHIELD GYPSUM CEILING PANELS w/ PRELUDE 15/16" EXPOSED TEE GRID.
	P-5 PAINT	SHERWIN - WILLIAMS	DRY FALL (FLAT WHITE)	WATERBORNE ACRYLIC DRYFALL: UTILIZE B42W00181 (LOW VOC) - NO SUBSTITUTIONS
MISC.	P-3 MARINE GRADE COATING	SHERWIN - WILLIAMS	SW4081 SAFETY RED	
	P-4 INDUSTRIAL ENAMEL	SHERWIN - WILLIAMS	SW7006 EXTRA WHITE (SEMI-GLOSS)	
	P-7 INDUSTRIAL ENAMEL	SHERWIN - WILLIAMS	SAFETY YELLOW (SEMI-GLOSS)	SEE PLAN FOR EXTENTS OF FLOOR STRIPING
	P-8 INDUSTRIAL ENAMEL	SHERWIN - WILLIAMS	SW6385 DOVER WHITE (SEMI-GLOSS)	INTERIOR DOORS AND DOOR FRAMES
	P-9 INDUSTRIAL ACRYLIC POLYURETHANE	SHERWIN - WILLIAMS	ACROLON 218 HS (GLOSS) - SW9176 DRESS BLUES	FOR STEEL HANDRAILS USE (1) COAT MACROPOXY 646 EPOXY PRIMER
	P-10 INDUSTRIAL ACRYLIC GLOSS	SHERWIN - WILLIAMS	PRO INDUSTRIAL ACRYLIC GLOSS	FOR PAINT APPLICATIONS TO EIFS AND MASONRY
	P-11 INDUSTRIAL ACRYLIC URETHANE	SHERWIN - WILLIAMS	PRO INDUSTRIAL ACROLON 100 WATERBASE URETHANE	FOR PAINT APPLICATIONS TO PRE-FINISHED METAL
NOTE: G.C. SHALL USE HARBOR FREIGHT TOOLS NATIONAL PARENT ACCOUNT #7757 WHEN ORDERING PAINT. SEE SHEET A0.0 FOR VENDOR CONTACT INFORMATION.				

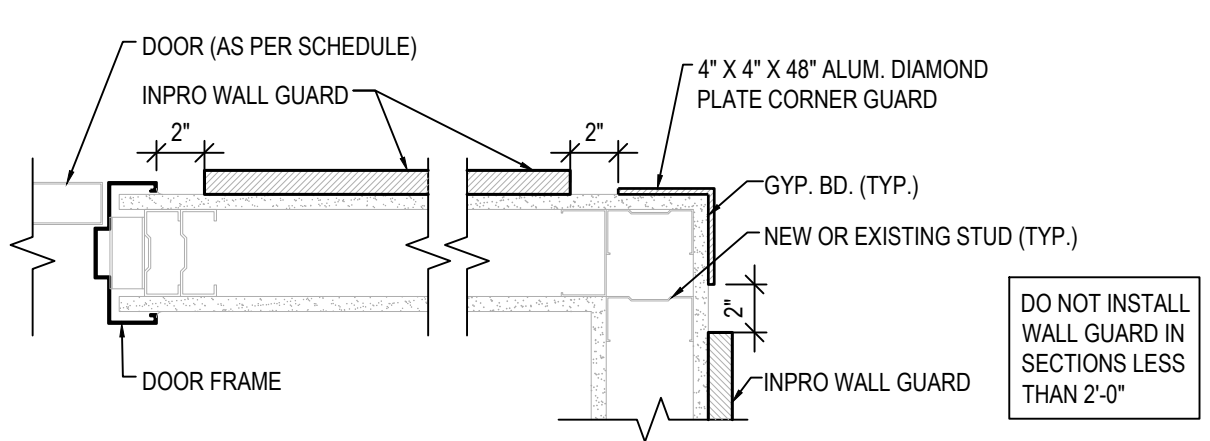
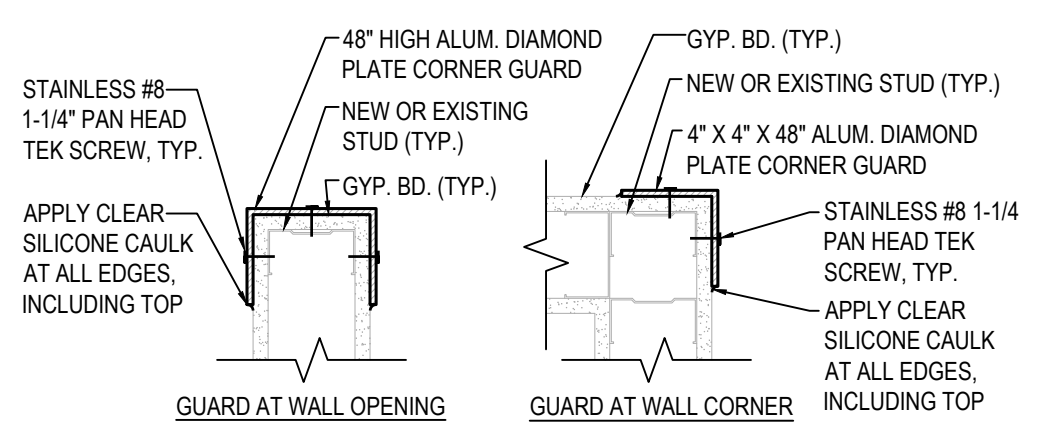
ROOM SCHEDULE					
NO.	ROOM NAME	WALL	BASE	FLOOR	CEILING
100	VESTIBULE	P-1	N/A	C-2	ACT-2
101	SALES AREA	P-1, P-2, P-6	VB-1	CON-1	OPEN TO STRUCTURE (PAINT P-5)
102	MANAGER OFFICE	P-1	VB-1	LVT-1	ACT-1
103	CASH ROOM	P-1	VB-1	LVT-1	ACT-1
104	SALES REPLENISHMENT	P-1, P-2, P-6	AS NOTED	CON-1	OPEN TO STRUCTURE (PAINT P-5)
105	RECEIVING AREA	P-1, P-2, P-6	AS NOTED	CON-1	OPEN TO STRUCTURE (PAINT P-5)
106	BREAK ROOM	P-1	VB-1	LVT-1	ACT-1
107	RESTROOM 1	WC-1	VB-1	LVT-1	ACT-2
108	RESTROOM 2	WC-1	VB-1	LVT-1	ACT-2
NOTES: 1. STRUCTURE ABOVE TO BE CLEANED AND CLEARED OF DEBRIS. ALL EXPOSED STEEL STRUCTURE AND DECK TO BE PAINTED, (P-5). 2. ALL PREVIOUSLY PAINTED ITEMS TO BE PAINTED INCLUDING PIPING, DUCTWORK, CONDUIT, ETC. 3. ALL NEW WORK TO BE PAINTED, EXCLUDING NEW DUCTWORK / NEW HVAC DIFFUSERS. NEW CONDUIT TO BE PAINTED IF ADJACENT SURFACE IS TO BE PAINTED. 4. ALL DOORS AND FRAMES TO BE PAINTED P-8. 5. ALL GYPSUM BOARD SURFACES TO BE PAINTED P-1. 6. ALL PREVIOUSLY PAINTED CMU (or CONCRETE) SURFACES TO BE PRIMED P-6, PAINTED P-2. 7. ALL BARE CMU (or CONCRETE) SURFACES TO BE PRIMED P-6A, PAINTED P-2. 8. PROVIDE A CLEAN, SMOOTH CONCRETE SURFACE FOR PROPER INSTALLATION OF ALL FLOOR FINISHES. 9. APPLICATIONS OF PAINT SHALL BE ONE COAT PRIMER AND TWO COATS PAINT (U.N.O.) PRIMER SHALL BE SPECIFIED OR RECOMMENDED BY PAINT MANUFACTURER.					

TAG SCHEDULE	
TAG	DESCRIPTION
(WG)	DENOTES 700 WALL GUARD, AS MANUFACTURED BY INPRO, "ANTIQUE WHITE, 0104," CENTERLINE OF RAIL MOUNTED @ 32" A.F.F. PER MANF. RECOMMENDATIONS. MIN. RUN 2'-0". HOLD WALL GUARD 2" FROM DOOR FRAMES AND CORNER GUARDS SEE DETAIL 3A1.3 FOR ADDITIONAL INFORMATION. TERMINATE GUARDS WITH 701 END CAPS.
(BR)	MICQUE ZINC PLATED STEEL BOXRAIL HEAVY DUTY FLOOR BUMPER INSTALLED PER MANF. RECOMMENDATIONS.
(FB)	LINE INDICATES WOOD BLOCKING FOR WALL FIXTURES. SHADED AREA INDICATES LOCATION OF WALL FIXTURES. SEE DETAIL 1A1.3 FOR ADDITIONAL INFORMATION.
(OW)	SHADED LINE DESIGNATES AREAS TO RECEIVE 1/2" OSB WAINSCOT TO 8'-0" A.F.F. - SEE PLAN FOR ADDITIONAL INFORMATION.
(C)	CORNER GUARD. SEE DETAIL 2A1.3 FOR ADDITIONAL INFORMATION. TYPES: A, B, C, D, E
CA	GUARD AT CORNER
CB	5'-1" AT OPENING
CC	5'-1/2" AT OPENING
CD	7'-3/8" AT OPENING
CE	7'-7/8" AT OPENING
(VB)	INSTALL BASE "VB-1" WITHIN SALES REPLENISHMENT AREA, DIMENSIONED LOCATION ONLY
(TB)	INSTALL 2x4 WOOD BLOCKING AT 5'-5" A.F.F. TO CENTERLINE, DIMENSIONED LOCATION ONLY. PAINT TO MATCH P-1.
DIMENSIONS SHOWN FOR ESTIMATION OF MATERIALS PURPOSES ONLY (TYP.)	



CORNER GUARD TO BE FULLY ADHERED TO WALL PER MANUFACTURER'S STANDARDS.

FASTEN CORNER GUARD TO WALL IN THE CENTER OF EACH FACE @ 0'-6" A.F.F., 1'-6" A.F.F., 2'-6" A.F.F. & 3'-6" A.F.F.



ADA ARCHITECTS SERVICES, P.C.
17710 Detroit Avenue
Phone (216) 521-5134
Fax (216) 521-4824
www.adaarchitects.com

HARBOR FREIGHT TOOLS

314 NY ROUTE 59
NYACK, NY 10960

THESE DOCUMENTS CONTAIN INFORMATION PROPRIETARY TO ADA ARCHITECTS SERVICES, P.C.
UNAUTHORIZED USE OF THESE DOCUMENTS IS EXPRESSLY PROHIBITED UNLESS AGREED UPON IN WRITING.

REVISIONS

#	DATE	TYPE
1		
2		
3		
4		
5		
6		
7		
8		
9		

FINISH PLAN

DATE 9/22/21
JOB NO. 20420

A1.3
SHEET NO.