



## EXISTING ELEVATION

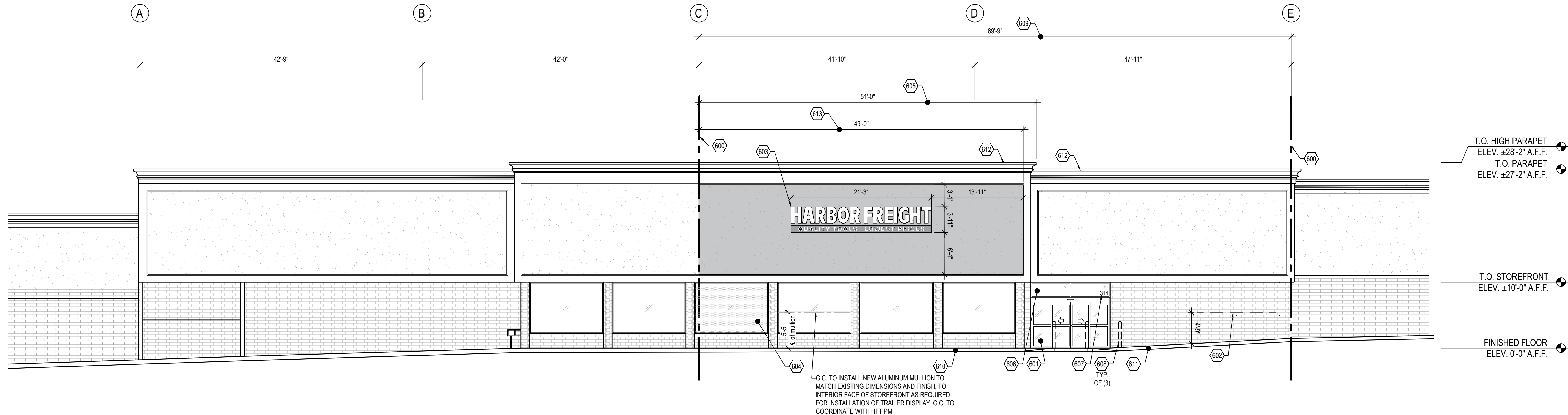
N.T.S.

## 600 SERIES ELEVATION KEY NOTES

600. LOCATION OF LEASE LINE.
601. DORMA 8I-PARTING DOOR SYSTEM. SEE SHEETS **A5.0** AND **A5.1** FOR ADDITIONAL INFORMATION.
602. SIGNAGE BANNER. PROVIDE 3/8" GALVANIZED EYELETS SPACED AS SHOWN ON DETAIL **3/A3.0**.
603. APPROXIMATE LOCATION OF HFT EXTERIOR BUILDING SIGN. BUILDING SIGNAGE PROVIDED AND INSTALLED BY HFT SIGN VENDOR. HFT GENERAL CONTRACTOR TO COORDINATE ACTUAL SIGNAGE LOCATION WITH **FINAL APPROVED BRANDBOOK**. LOCATION AND SIZE SHOWN ARE APPROXIMATE. ALL SIGNAGE IS BY SEPARATE PERMIT. G.C. TO PROVIDE AND INSTALL SIGNAGE BLOCKING AND POWER AS COORDINATED WITH SIGNAGE VENDOR. G.C. RESPONSIBLE FOR PATCH AND REPAIR OF WALL / ROOF WHERE AFFECTED BY SIGNAGE INSTALL. G.C. TO CONTRACT WITH LANDLORD'S ROOFING CONTRACTOR FOR ALL ROOFING WORK TO MAINTAIN ALL ROOFING WARRANTIES.
604. DOTTED LIGHT GREY HATCH INDICATES AREA OF VENDOR INSTALLED WINDOW FILM ON THE INTERIOR SIDE OF WINDOW PANELS. WINDOW FILM T BE 3M AFFINITY 15.
605. EXISTING EIFS SIGNBOARD WITH EIFS CORNICE.
606. ALUMINUM FRAME TRANSOM SYSTEM. SEE SHEET **A5.1** FOR ADDITIONAL INFORMATION.
607. PROVIDE 8" HIGH WHITE VINYL NUMBERS STATING STREET ADDRESS IN HELVETICA FONT STYLE ON TRANSOM. SEE DOOR SCHEDULE NOTES ON SHEETS **A5.0** AND **A5.1** FOR ADDITIONAL INFORMATION.
608. 6" PIPE BOLLARD. SEE SHEET **A1.1** AND DETAIL **3/A4.1** FOR ADDITIONAL INFORMATION.
609. G.C. TO REPAINT PREVIOUSLY PAINTED FACADE ELEMENTS TO MATCH EXISTING, U.N.O. G.C. TO POWER WASH EXISTING UNPAINTED MASONRY.
610. EXISTING CONCRETE WALK.
611. NEW CONCRETE WALK, SLOPE NOT TO EXCEED 1:20. SEE SHEET **A4.2** FOR ADDITIONAL INFORMATION.
612. EXISTING COPING TO REMAIN.
613. SOLID LIGHT GREY HATCH INDICATES EXTENTS OF NEW PAINTED EFIS G.C. TO PAINT P-3 MARINE GRADE COATING **SW 4081 SAFETY RED**. COORDINATE WITH SHERWIN WILLIAMS AS REQUIRED.
614. APPROXIMATE EXTENTS OF RECEIVING AREA ENCLOSURE. METAL CLADDING SIDING TO BE WHIRLWIND STEEL "SUPER SPAN" METAL PANELS, AND STANDING SEAM METAL ROOFING, COLORS: OLD TOWN GRAY. SEE SHEETS **A4.2**, **A4.3** AND STRUCTURAL DRAWINGS FOR ADDITIONAL INFORMATION.
615. HOLLOW METAL DOOR AND FRAME TO BE PAINTED TO MATCH ADJACENT WALL FINISH. SEE SHEETS **A1.3** AND **A5.0** FOR ADDITIONAL INFORMATION.
616. PROVIDE 6" HIGH VINYL LETTERING STATING "HFT" AND STREET ADDRESS IN HELVETICA FONT: COLOR TO CONTRAST WITH DOOR. HATCHING INDICATES STEEL LINTEL. SEE STRUCTURAL DRAWINGS FOR ADDITIONAL INFORMATION.
617. HATCHING INDICATES STEEL LINTEL. SEE STRUCTURAL DRAWINGS FOR ADDITIONAL INFORMATION.
618. WALL MOUNTED LIGHT FIXTURE. SEE SHEET **A2.0** AND ELECTRICAL DRAWINGS FOR ADDITIONAL INFORMATION.
619. EXISTING GAS METER.
620. 8" PIPE BOLLARD. SEE SHEET **A1.1** AND DETAIL **3/A4.1** FOR ADDITIONAL INFORMATION.
621. OVERHEAD DOOR. SEE DOOR SCHEDULE ON SHEET **A5.0** FOR ADDITIONAL INFORMATION.
622. GUARDRAIL AND RETAINING WALL. SEE SHEET **A4.2** FOR ADDITIONAL INFORMATION.

## GENERAL NOTES

1. REFER TO GENERAL NOTES ON SHEET **A0.2** FOR ADDITIONAL INFORMATION.
2. SIGNAGE PERMIT DRAWINGS TO BE SUBMITTED SEPARATELY.
3. HFT GENERAL CONTRACTOR TO VISIT SITE AND VERIFY EXISTING CONDITIONS PRIOR TO SUBMITTING PROPOSALS AND COMMENCING WORK.
4. SIGNAGE SHOWN FOR REFERENCE ONLY - ACTUAL SIGNAGE SIZE AND TYPE TO BE DETERMINED BY HFT AND LANDLORD.
5. ALL SIGNAGE TO COMPLY WITH LANDLORD TENANT CRITERIA AND STATE / LOCAL CODES.
6. COORDINATE WITH SIGNAGE VENDOR FOR ANY SPECIFIC CRITERIA TO BE USED.
7. ALL SIGNAGE TO BE UL RATED.
8. EXISTING STOREFRONT CONSTRUCTION AND FINISHES TO REMAIN U.N.O.
9. WHERE A SURFACE IS NOTED TO BE PAINTED, PAINTING SHALL INCLUDE SURFACE PREPARATION FOR PAINT ACCORDING TO PAINT MANUFACTURER RECOMMENDATIONS.

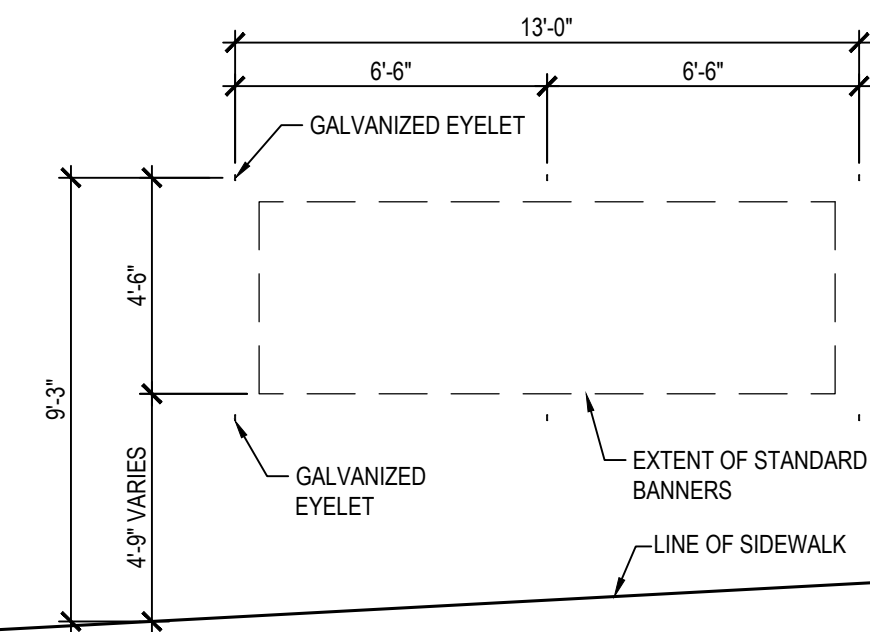


## 1 SOUTH ELEVATION

A3.0 SCALE: 1/8" = 1'-0"

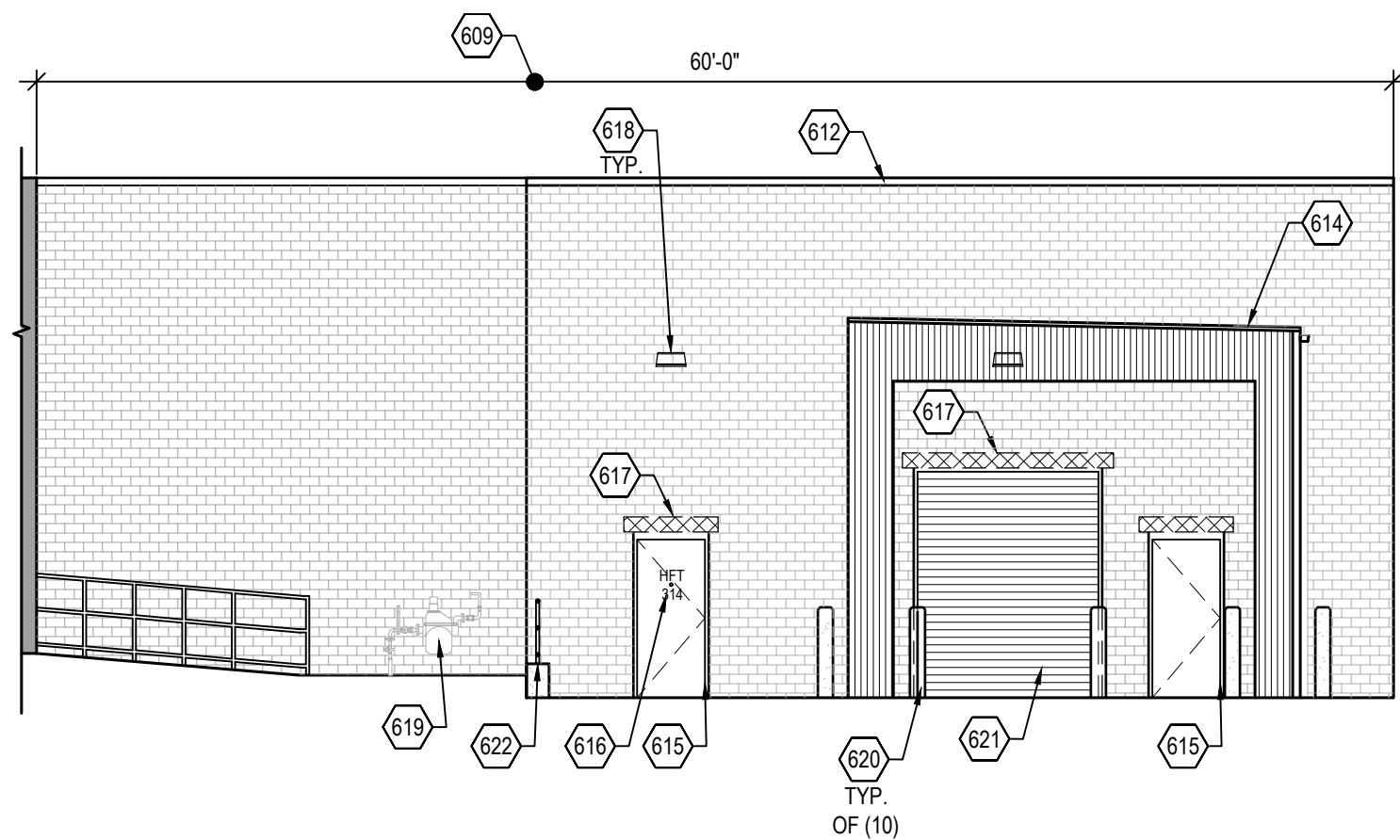
### NOTES

1. HARBOR FREIGHT USES ONE STANDARD SIZE BANNER (4' X 12')
2. EYELETS FOR THIS BANNER TO BE GALVANIZED
3. ALL ITEMS SUPPLIED BY HFT, UNDER SKU #81487, EXCEPT (3) 5/16" X 4 1/4" SCREW HOOKS AND (2) 5/16" X 4 1/4" EYELETS
4. G.C. TO ENSURE EYELETS ARE INSTALLED TO SUITABLE BLOCKING MATERIAL AND CAPABLE OF WITHSTANDING WIND FORCES.
5. G.C. TO VERIFY WITH HFT P.M. IF EYELETS ARE ALLOWED PRIOR TO INSTALLATION.



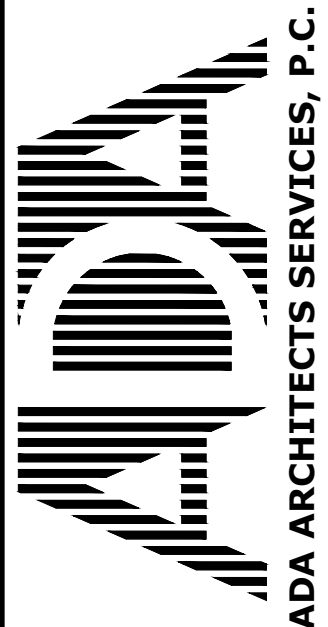
## 3 EYELET AND SCREW HOOK SPACING DETAIL

A3.0 SCALE: 1/4" = 1'-0"



## 2 PARTIAL EAST ELEVATION

A3.0 SCALE: 1/8" = 1'-0"



ADA ARCHITECTS SERVICES, P.C.

Lakewood, Ohio 44107  
17710 Detroit Avenue  
Phone (216) 521-5134  
Fax (216) 521-4824  
www.adaarchitects.com

# HARBOR FREIGHT TOOLS

NYACK, NY 10960

314 NY ROUTE 59

THESE DOCUMENTS CONTAIN INFORMATION PROPRIETARY TO ADA ARCHITECTS SERVICES, P.C.  
UNAUTHORIZED USE OF THESE DOCUMENTS IS EXPRESSLY PROHIBITED UNLESS AGREED UPON IN WRITING.

DO NOT SCALE THESE DRAWINGS

### REVISIONS

#	DATE	TYPE
1		
2		
3		
4		
5		
6		
7		
8		
9		

### EXTERIOR ELEVATIONS

DATE 9/22/21

JOB NO. 20420

# A3.0

SHEET NO.