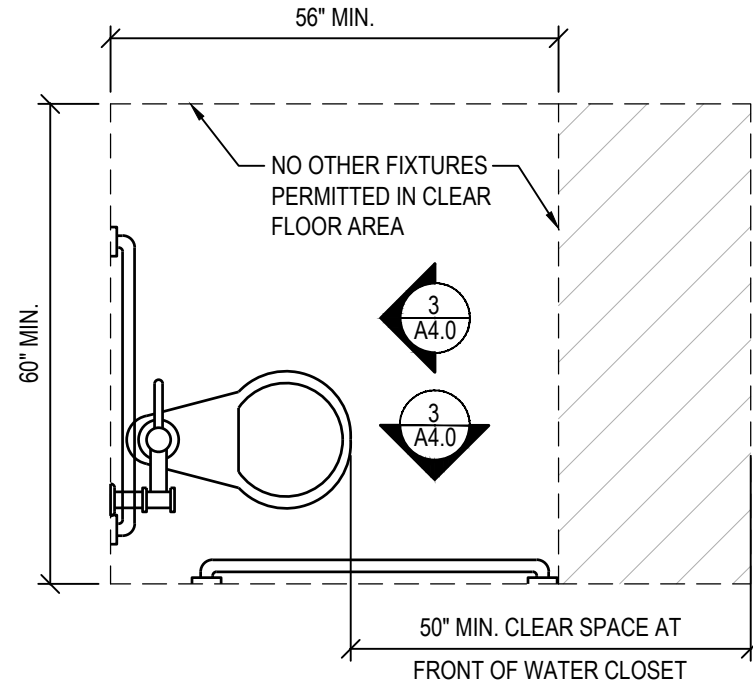
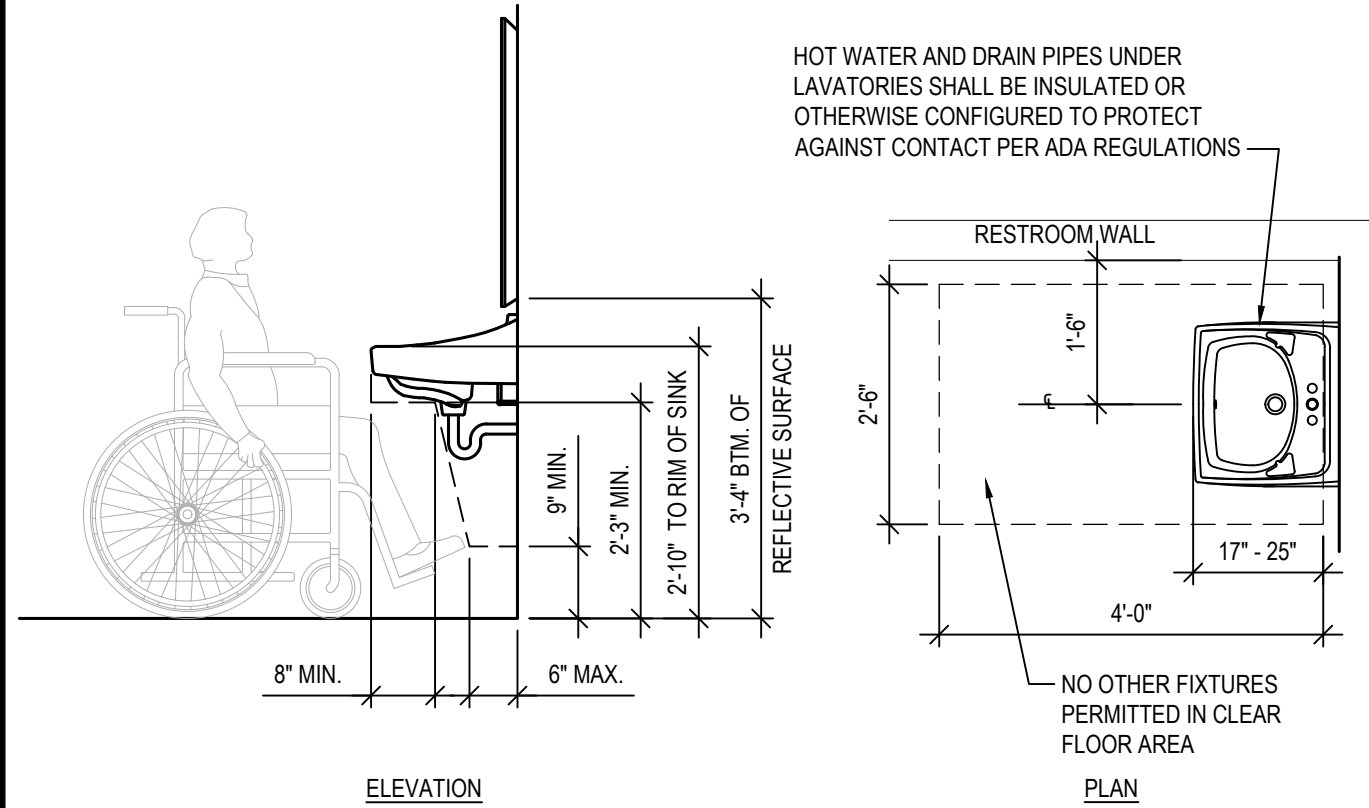


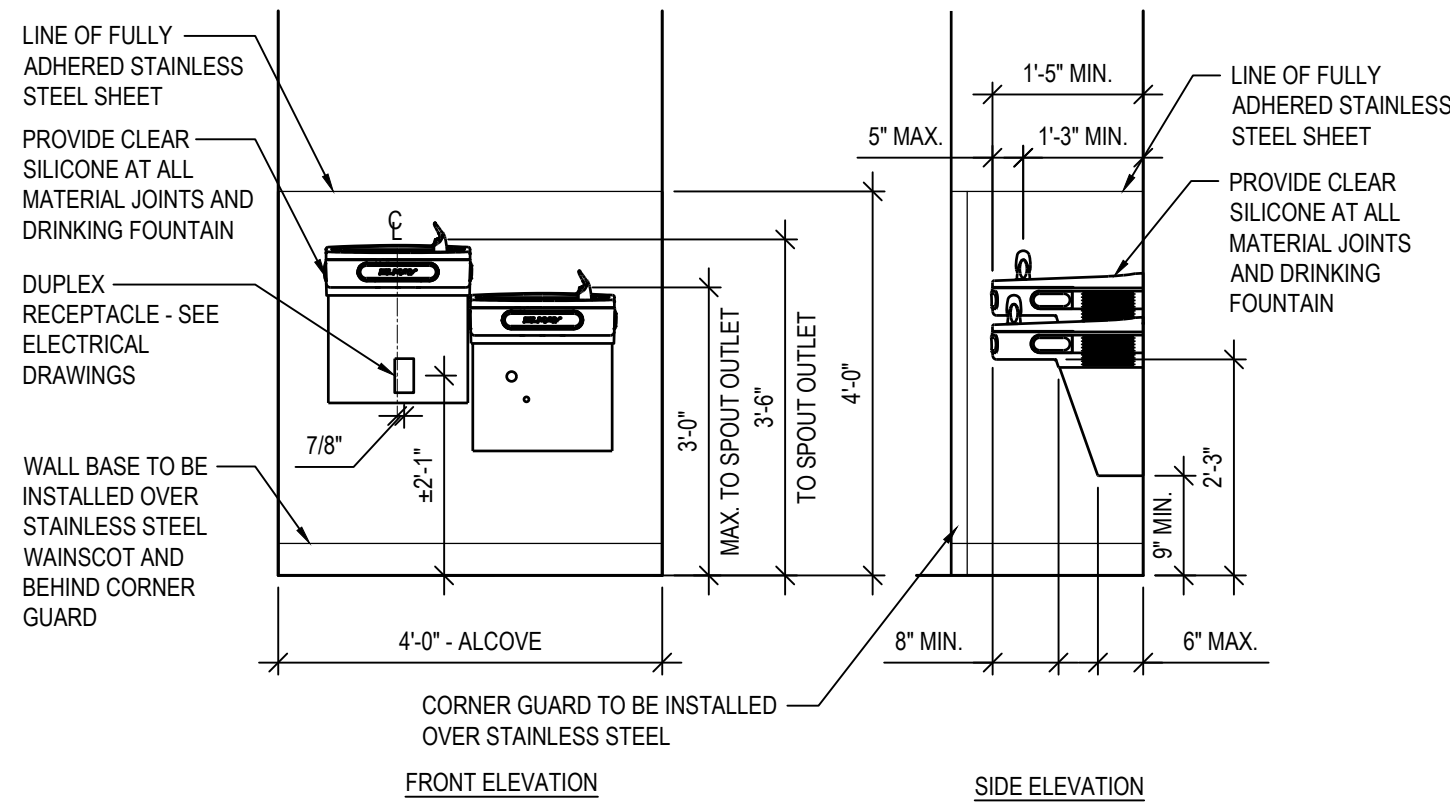
3 ACCESSIBLE WATER CLOSET ELEVATIONS
SCALE: 1/2" = 1'-0"



2 ACCESSIBLE TOILET
SCALE: 1/2" = 1'-0"



5 ACCESSIBLE LAVATORY PLAN & ELEVATION
SCALE: 1/2" = 1'-0"

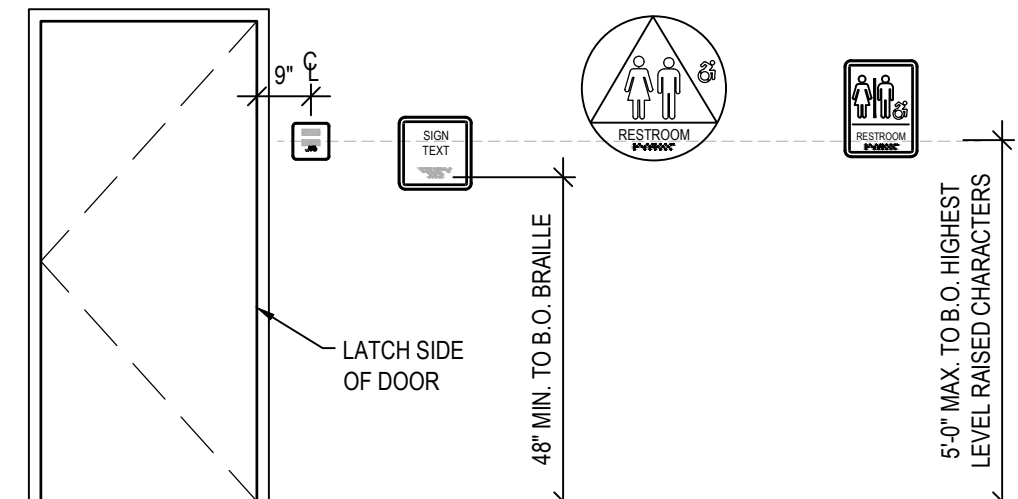


4 ACCESSIBLE DRINKING FOUNTAIN ELEVATIONS
SCALE: 1/2" = 1'-0"

TYPICAL ROOM / EXIT SIGNS

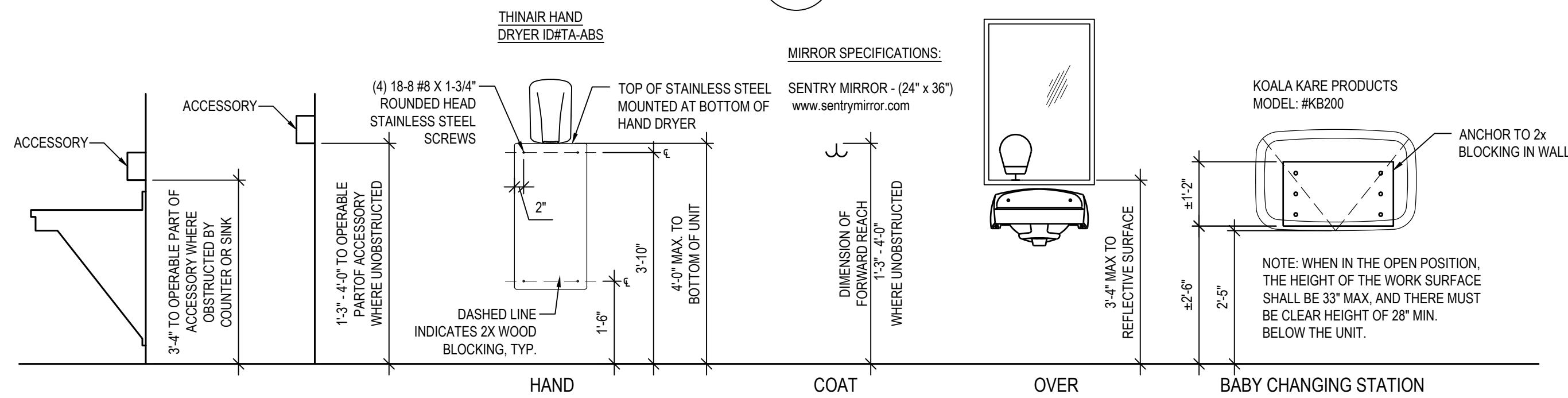
DOOR SIGN

WALL SIGN

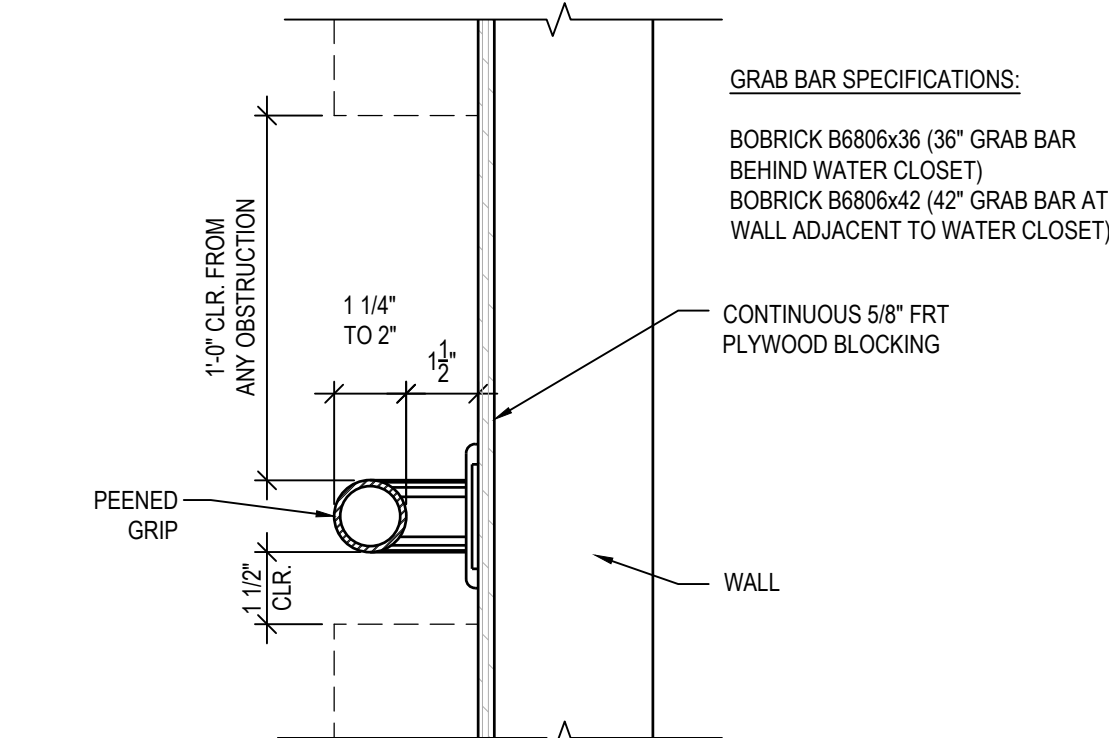


- NOTES:
1. CHARACTERS, SYMBOLS AND THEIR BACKGROUND SHALL HAVE A NON-GLARE FINISH. CHARACTERS AND SYMBOLS SHALL CONTRAST WITH THEIR BACKGROUND.
 2. CHARACTERS ON SIGNS SHALL BE RAISED 1/32" MINIMUM & SHALL BE SANS SERIF UPPERCASE CHARACTERS. CHARACTERS SHALL BE A MINIMUM OF 5/8" AND A MAXIMUM OF 2" HIGH.
 3. BRAILLE SHALL BE GRADE 2 AND SHALL COMPLY SIZE AND SPACING REQUIREMENTS IN THE ACCESSIBILITY CODE. BRAILLE CHARACTERS SHALL BE LOCATED BELOW THE SIGN TEXT, WITH A 3/8" MINIMUM SPACE BETWEEN BRAILLE AND TEXT OR OTHER SIGNAGE ELEMENTS (BORDER, PICTOGRAM, ETC).
 4. PICTOGRAMS SHALL BE ACCOMPANIED BY THE VERBAL DESCRIPTION PLACED DIRECTLY BELOW THE PICTOGRAM. THE OUTSIDE DIMENSION OF THE PICTOGRAM FIELD SHALL BE A MINIMUM OF 6" IN HEIGHT.

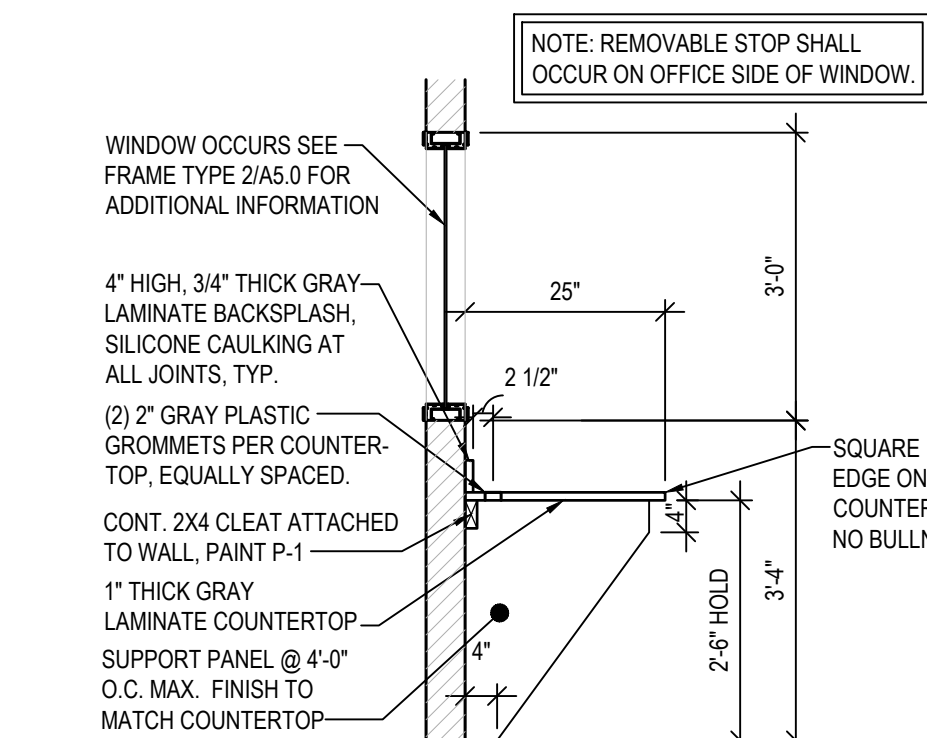
6 SIGN DETAILS
SCALE: N.T.S.



7 ACCESSORY MOUNTING HEIGHTS
SCALE: 1/2" = 1'-0"



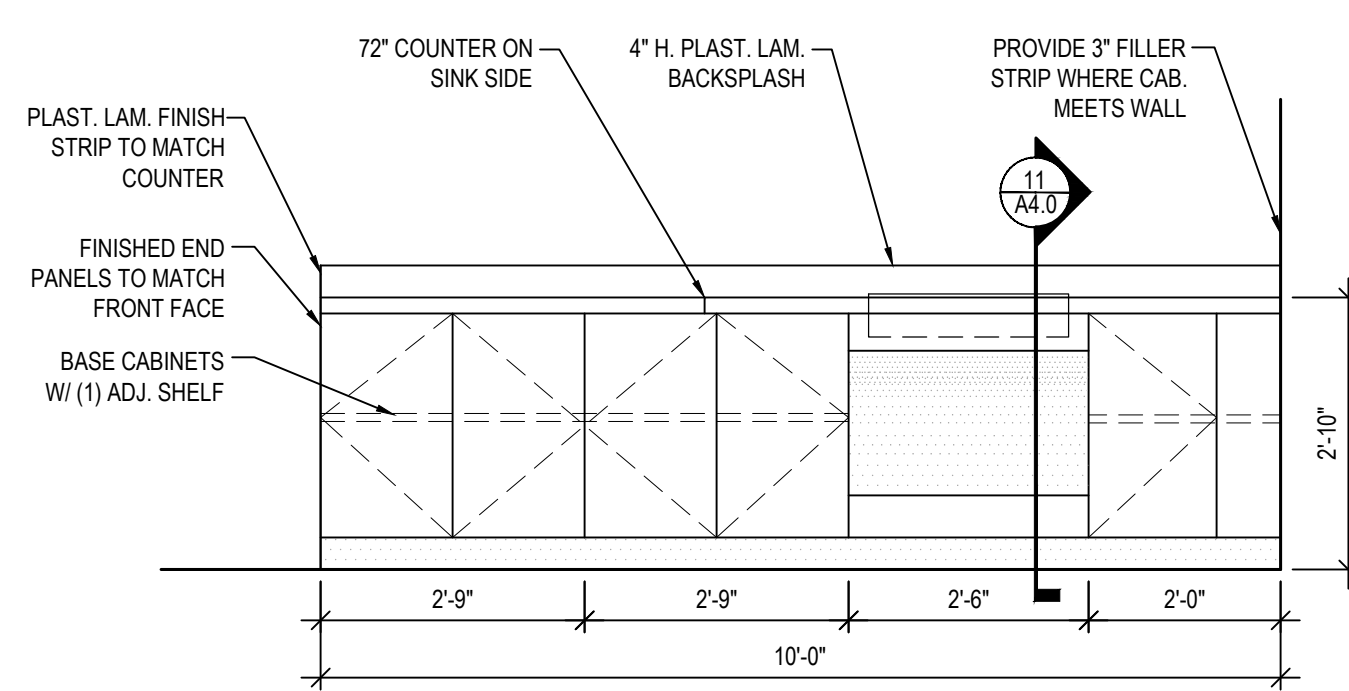
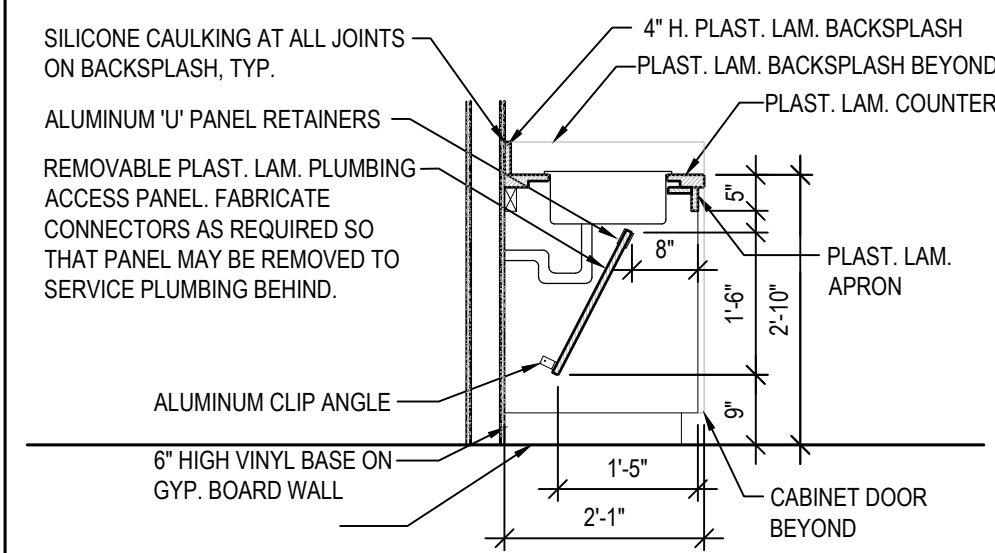
8 GRAB BAR SECTION
SCALE: N.T.S.



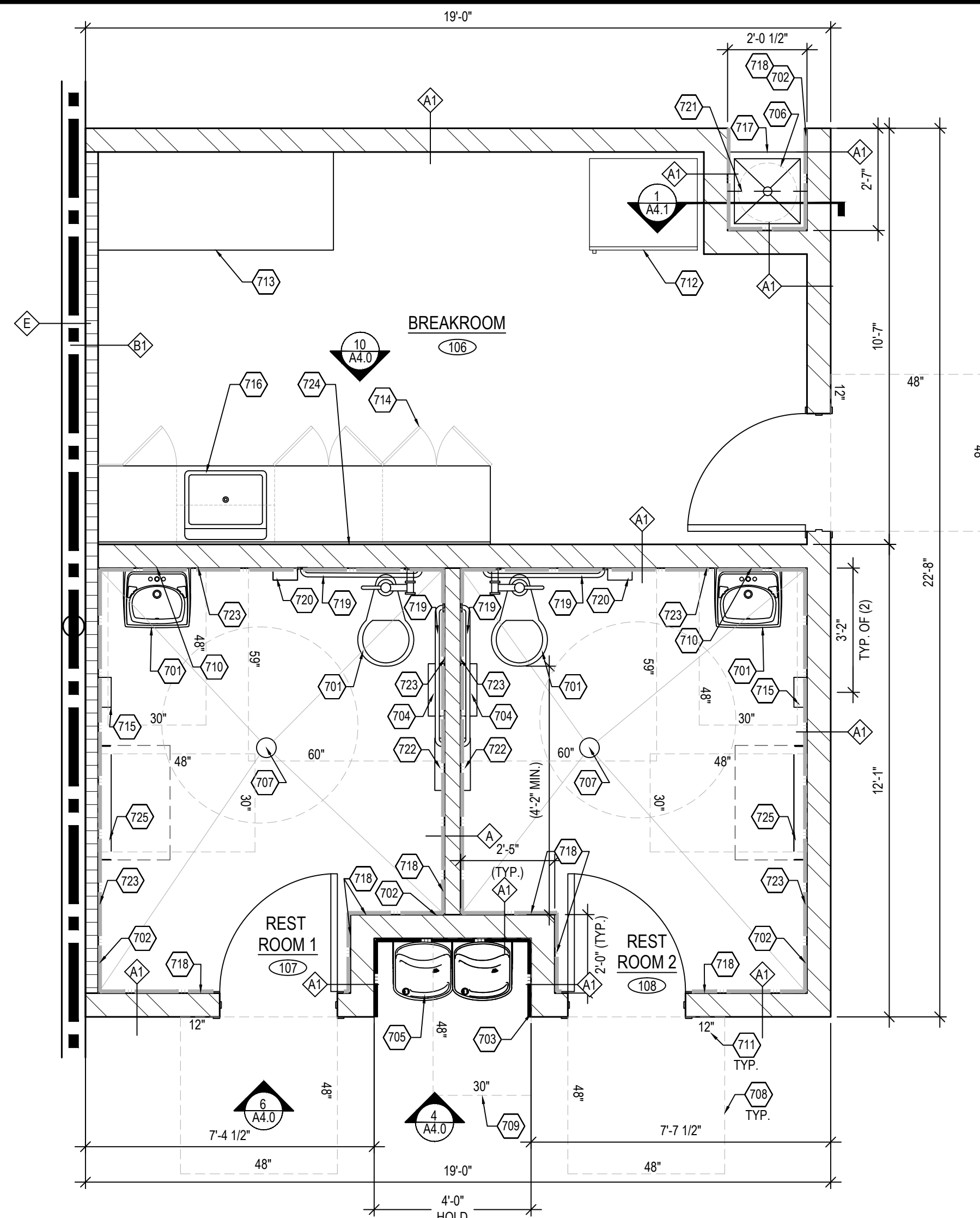
12 OFFICE COUNTERTOP SECTION
SCALE: 1/2" = 1'-0"

- CASEWORK NOTES
1. REFER TO GENERAL NOTES OF SHEET A2.0 FOR ADDITIONAL INFORMATION
 2. HFT GENERAL CONTRACTOR TO VISIT SITE AND VERIFY EXISTING CONDITIONS PRIOR TO SUBMITTING PROPOSALS AND COMMENCING WORK.
 3. CABINETS WITH DOORS
ALL PARTS EXPOSED TO VIEW SHALL BE COVERED WITH LAMINATED PLASTIC FINISH. INSIDE OF CABINETS SHALL BE MELAMINE.
 4. FURNISH ALL HARDWARE AS REQUIRED. PROVIDE ADJUSTABLE SHELVES AND REQUIRED HARDWARE WHERE SHOWN. (NO VISIBLE HARDWARE)
 5. PROVIDE ALL NECESSARY "IN-WALL" BLOCKING OR PLYWOOD BACKING AS REQUIRED TO SUPPORT COUNTERS, SHELVING, CABINETRY, ETC.
 6. PROVIDE SUPPORT BRACKETS AS REQUIRED AT ALL COUNTERS.
 7. PROVIDE 'CUTOUT' AND/OR OPENINGS AS MAY BE REQUIRED FOR PLUMBING FIXTURES, EQUIPMENT, ETC. VERIFY LOCATIONS WITH HFT.
 8. PROVIDE OPENING IN COUNTERS W/ PLASTIC GROMMETS FOR WIRING AT ELECTRIC & DATA OUTLETS AS MAY BE REQUIRED. VERIFY LOCATIONS WITH HFT.
 9. SEE DRAWING A1.2 FOR CASEWORK & COUNTERTOP LOCATIONS.
 10. PROVIDE RUBBER BASE OVER TOE KICK
 11. OPEN SHELVING: ALL SHELVING UNITS, EDGES OF SHELVES AND VERTICAL SUPPORTS SHALL HAVE PLASTIC LAMINATE FINISH ON ALL SURFACES EXPOSED TO VIEW.
 12. G.C. TO SILICON AROUND SINK AND AT ALL BACKSPLASH EDGES AND SEAMS WITH CLEAR SILICONE.

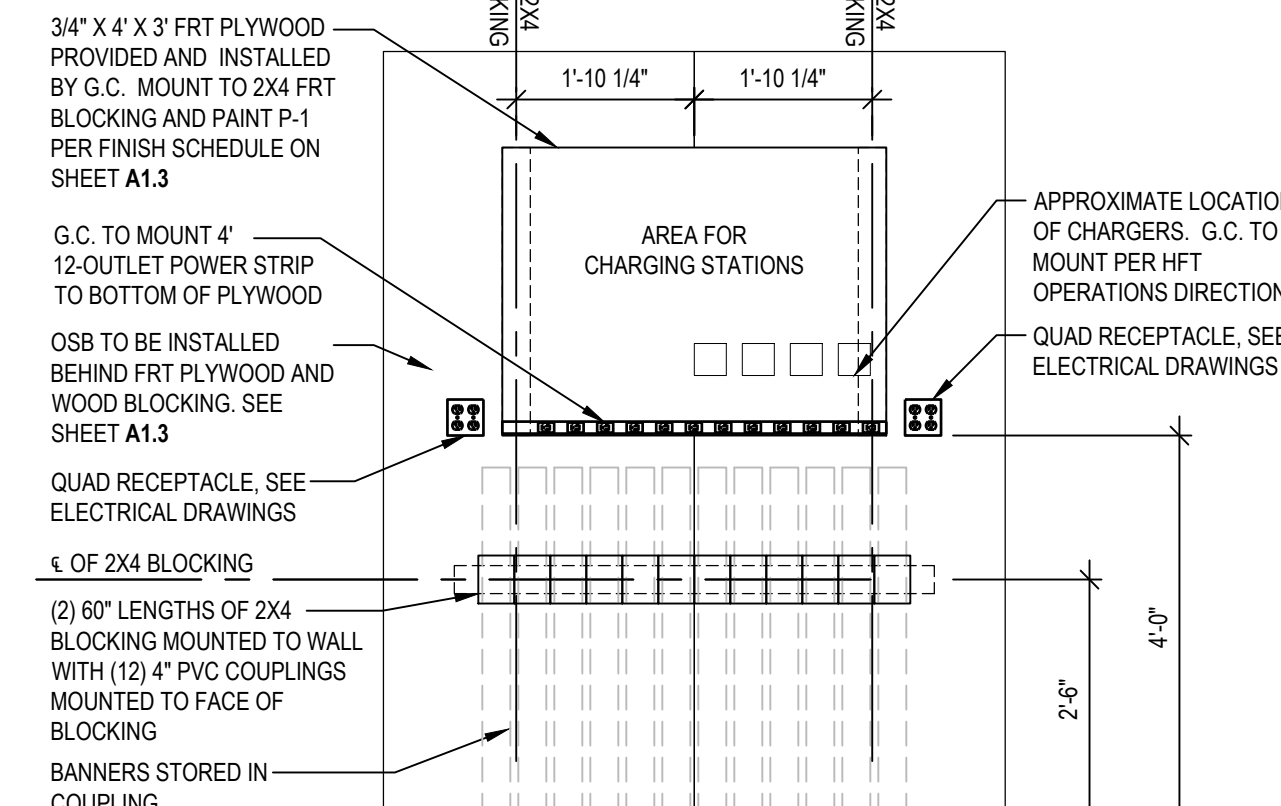
11 COUNTERTOP SECTION @ SINK
SCALE: 1/2" = 1'-0"



10 BREAK ROOM CASEWORK ELEVATION
SCALE: 1/2" = 1'-0"



1 ENLARGED RESTROOM / BREAK ROOM PLAN
SCALE: 3/8" = 1'-0"



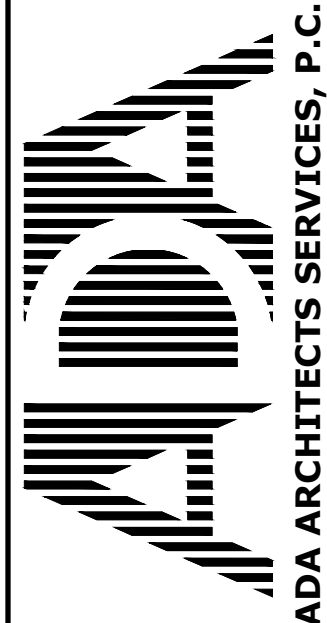
9 BANNER AND CHARGING STATION
SCALE: 1/2" = 1'-0"

GENERAL NOTES

1. SEE TYPICAL RESTROOM DETAILS THIS SHEET FOR ADDITIONAL INFORMATION.
2. SEE A1.1, & 4.1 FOR KEY NOTE REFERENCES, WALL TYPE REFERENCES, AND ADDITIONAL INFORMATION.
3. SEE PLUMBING SHEET FOR FIXTURE TYPES.
4. FURNISH ALL HARDWARE AS REQUIRED. PROVIDE ADJUSTABLE SHELVES AND REQUIRED HARDWARE WHERE SHOWN. (NO VISIBLE HARDWARE)
5. SEE ELECTRICAL & PLUMBING DRAWINGS FOR ADDITIONAL INFORMATION.
6. SEE SHEET A0.0 FOR ITEMS FURNISHED BY HFT AND INSTALLED BY G.C.

700 SERIES KEY NOTES

701. RESTROOM FIXTURES. SEE DETAILS 2, 3 & 5 / A4.0 AND PLUMBING DRAWINGS FOR ADDITIONAL INFORMATION.
702. DOTTED LINE INDICATES PROVIDE AND INSTALL WC-1 ON WALL AS SHOWN. SEE FINISH SCHEDULE A1.3 FOR ADDITIONAL INFO.
703. GREEN BOARD AND 20 GA. STAINLESS STEEL SHEET TO EXTEND FROM FLOOR TO 4'-0" A.F.F. AT ALL DRINKING FOUNTAIN WALLS. SEE DETAIL 4/A4.0 FOR ADDITIONAL INFORMATION.
704. TOILET PAPER DISPENSER BOBRICK MODEL: #B-2840.
705. DRINKING FOUNTAIN - REFER TO PLUMBING DRAWINGS FOR ADDITIONAL INFORMATION.
706. WATER HEATER MOUNTED ABOVE MOP SINK ON SHELF. SHELF TO BE MOUNTED AT 8'-0" A.F.F. REFER TO PLUMBING DRAWINGS FOR MORE DETAILS.
707. FLOOR DRAIN. REFER TO PLUMBING DRAWINGS FOR MORE DETAILS. CONTRACTOR TO SLOPE FLOOR TOWARDS DRAIN. (SLOPE NOT TO EXCEED 2%). G.C. TO FILL CONCRETE AROUND DRAIN TO ACHIEVE A FLUSH LEVEL FINISH.
708. DASHED LINE INDICATES MIN. CLEAR FLOOR SPACE (TYP.)
709. CLEAR FLOOR SPACE CENTERED ON LOW DRINKING FOUNTAIN.
710. MIRROR LOCATION. SEE DETAIL 7 THIS SHEET FOR MOUNTING HEIGHTS AND DIMENSIONS.
711. NUMBERS INDICATE MINIMUM CLEAR AREA AT FLOOR SPACE DIAGRAMS (TYP.)
712. REFRIGERATOR LOCATION.
713. APPROXIMATE LOCATION OF BREAKROOM TABLE BY HFT.
714. BREAK ROOM CABINETS. SEE DETAILS 10&11 THIS SHEET.
715. THINAIR HAND DRYER (110-120V, 7 AMPS), MODEL #ITA-ABS, WITH ANTI-MICROBIAL WALL GUARDS, ID #89S. SEE DETAIL 7 THIS SHEET FOR MOUNTING INFORMATION. SEE ELECTRICAL DRAWINGS FOR ADDITIONAL INFO.
716. BREAKROOM SINK SEE P1.0 PLUMBING FIXTURES SPECIFICATIONS.
717. MOP SINK - REFER TO PLUMBING DRAWINGS FOR ADDITIONAL INFORMATION.
718. USE 3/4 GREEN BOARD IN PLACE OF 3/4 GYP BOARD AS NOTED.
719. GRAB BARS. SEE DETAILS 2, 3, & 8 / A4.0 FOR ADDITIONAL INFORMATION.
720. SANITARY NAPKIN DISPOSAL BOBRICK MODEL: #B-270.
721. (2) 12" DEEP WHITE WIRE SHELVES FOR CLEANING SUPPLIES.
722. TOILET SEAT COVER DISPENSER TORK MODEL: #99A.
723. USE 5/8" FRT PLYWOOD IN PLACE OF 5/8" GYP. BOARD AS NOTED.
724. REPLACE 5/8" GYP. BOARD WITH 5/8" GREEN BOARD OVER 5/8" FRT PLYWOOD AS NOTED.
725. BABY CHANGING STATION, KOALA KARE PRODUCTS MODEL: #KB200



HARBOR FREIGHT TOOLS

NYACK, NY 10960

314 NY ROUTE 59

THESE DOCUMENTS CONTAIN INFORMATION PROPRIETARY TO ADA ARCHITECTS SERVICES, P.C.
UNAUTHORIZED USE OF THESE DOCUMENTS IS EXPRESSLY PROHIBITED UNLESS AGREED UPON IN WRITING.

Lakewood, Ohio 44107
Phone (216) 521-5134
Fax (216) 521-4824
www.adaarchitects.com

REVISIONS

#	DATE	TYPE
1		
2		
3		
4		
5		
6		
7		
8		
9		

SECTIONS & DETAILS

DATE 9/22/21

JOB NO. 20420

A4.0

SHEET NO.

DO NOT SCALE THESE DRAWINGS