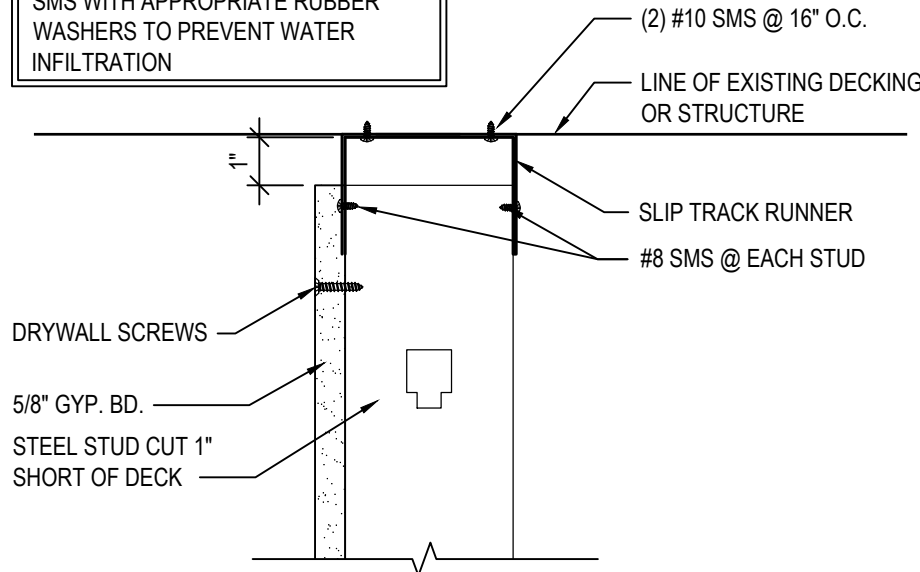
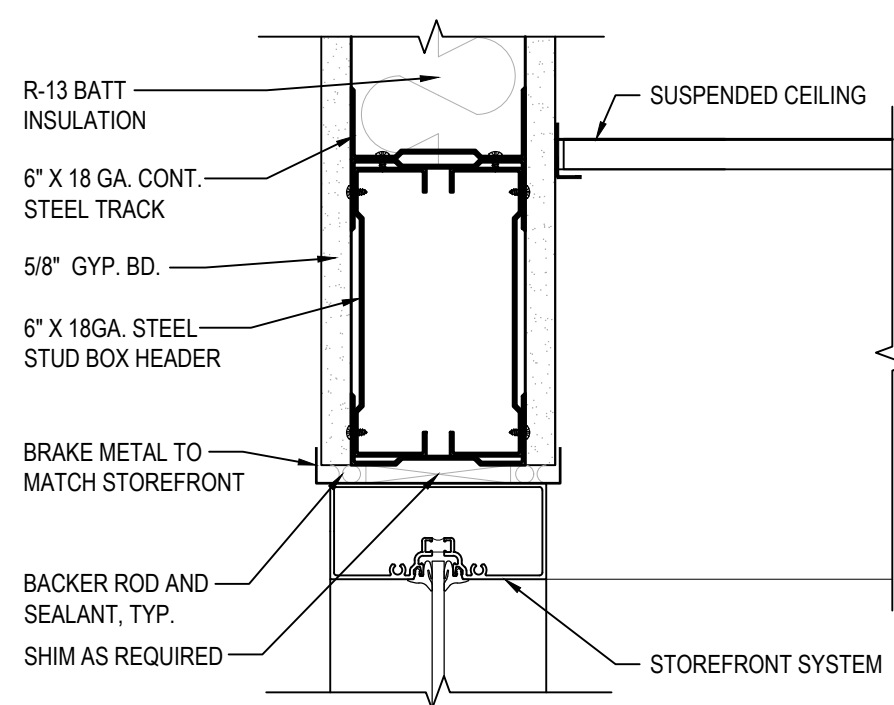


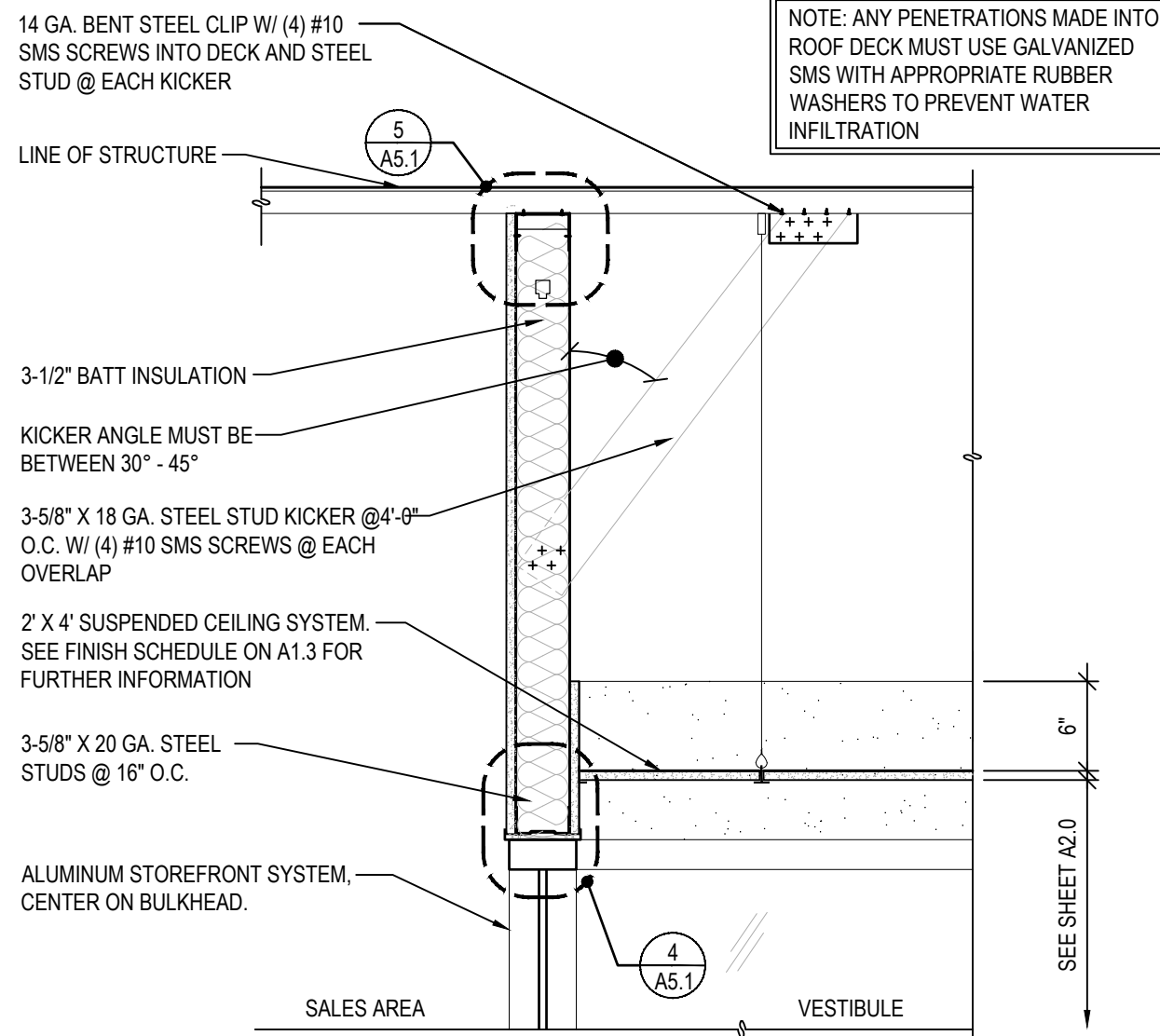
NOTE: ANY PENETRATIONS MADE INTO ROOF DECK MUST USE GALVANIZED SMS WITH APPROPRIATE RUBBER WASHERS TO PREVENT WATER INFILTRATION



5 TYPICAL SLIP TRACK DETAIL
SCALE: 3\"/>



4 VESTIBULE HEAD DETAIL
SCALE: 3\"/>



3 VESTIBULE BULKHEAD SECTION
SCALE: 1\"/>

NOTE: G.C. TO FIELD VERIFY ALL EXISTING DIMENSIONS AND COORDINATE WITH DORMA DOOR BEFORE ORDERING. NOTIFY ARCHITECT OF ANY DISCREPANCIES.

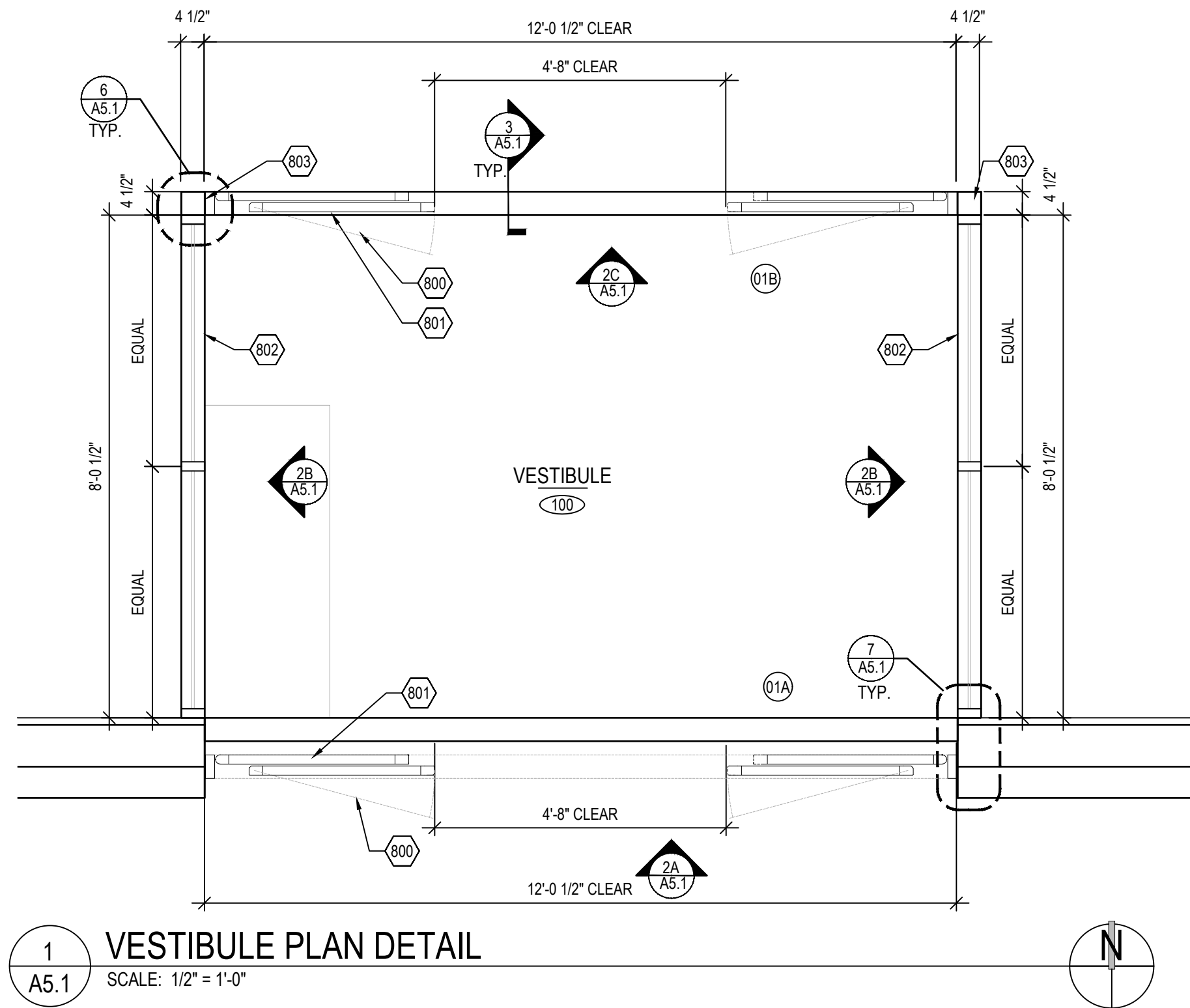
NOTE: ALL NEW ALUMINUM STOREFRONT FINISH TO MATCH DOOR SYSTEM IN DOOR SCHEDULE ON SHEET A5.0 (FINISH: DARK BRONZE)

GENERAL NOTES

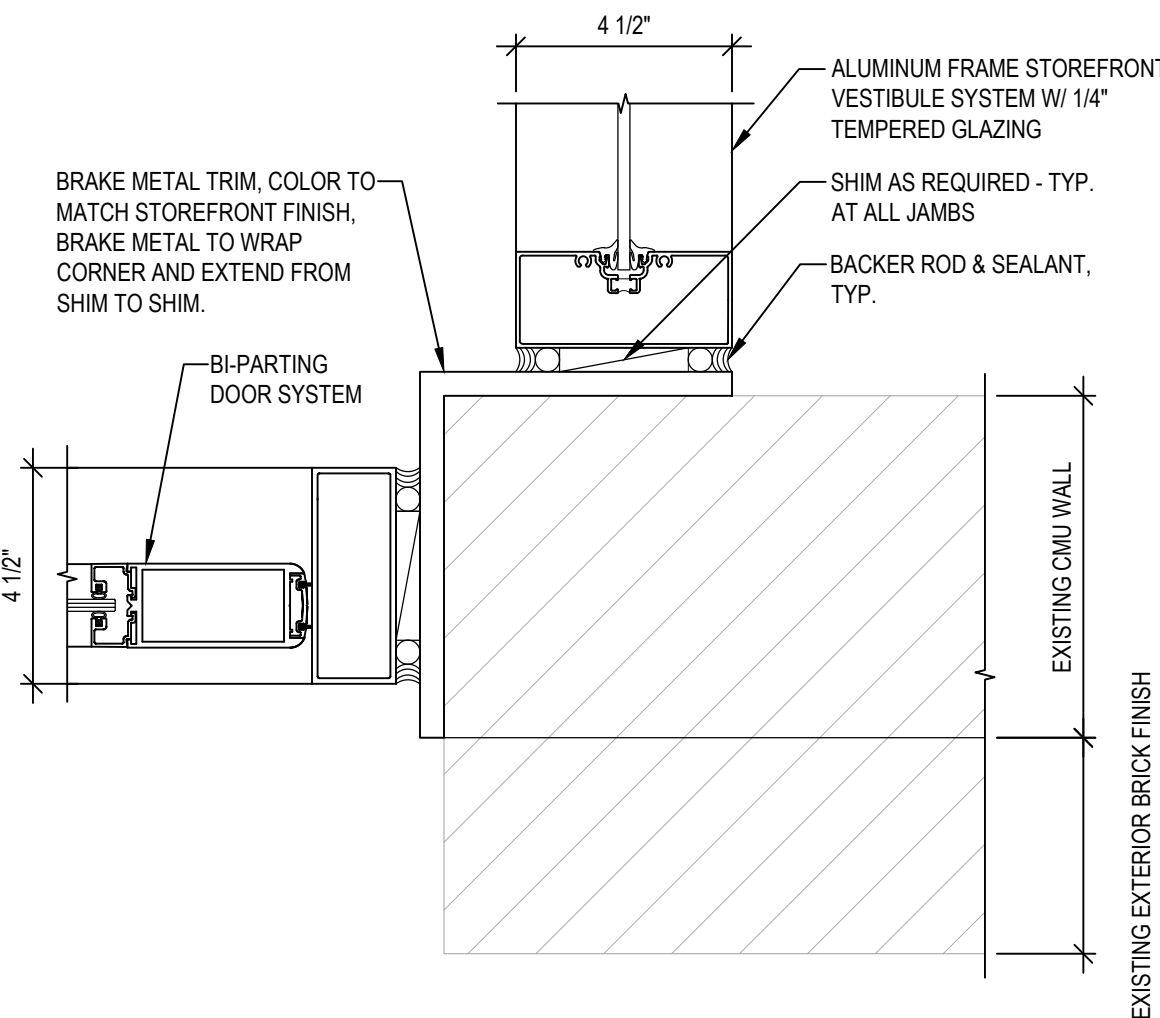
- ALL GLAZING TO BE 1/4\"/>

VESTIBULE KEY NOTES

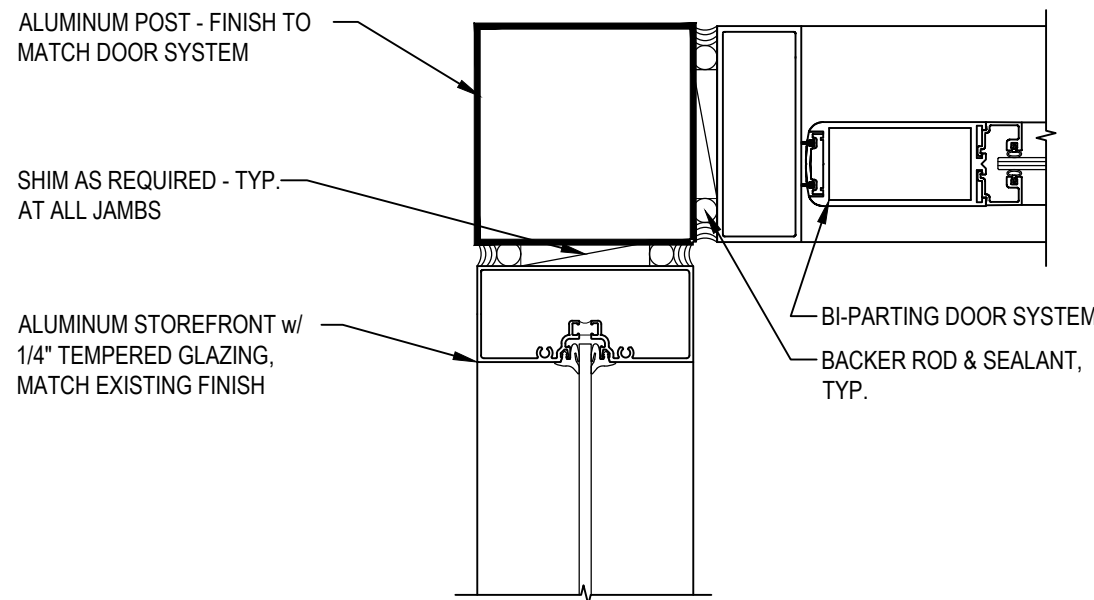
800. DENOTES EMERGENCY DOOR BREAK OUT.
801. DENOTES DORMA BI-PARTING ENTRY DOOR PACKAGE. TO BE CONSTRUCTED BY DORMA.
802. STOREFRONT SYSTEM TO MATCH EXISTING STOREFRONT FINISH.
803. 4-1/2\"/>



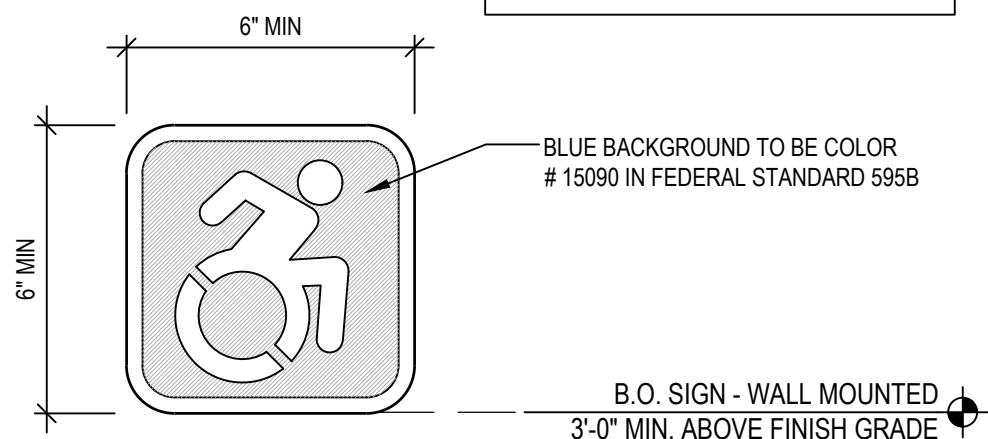
1 VESTIBULE PLAN DETAIL
SCALE: 1/2\"/>



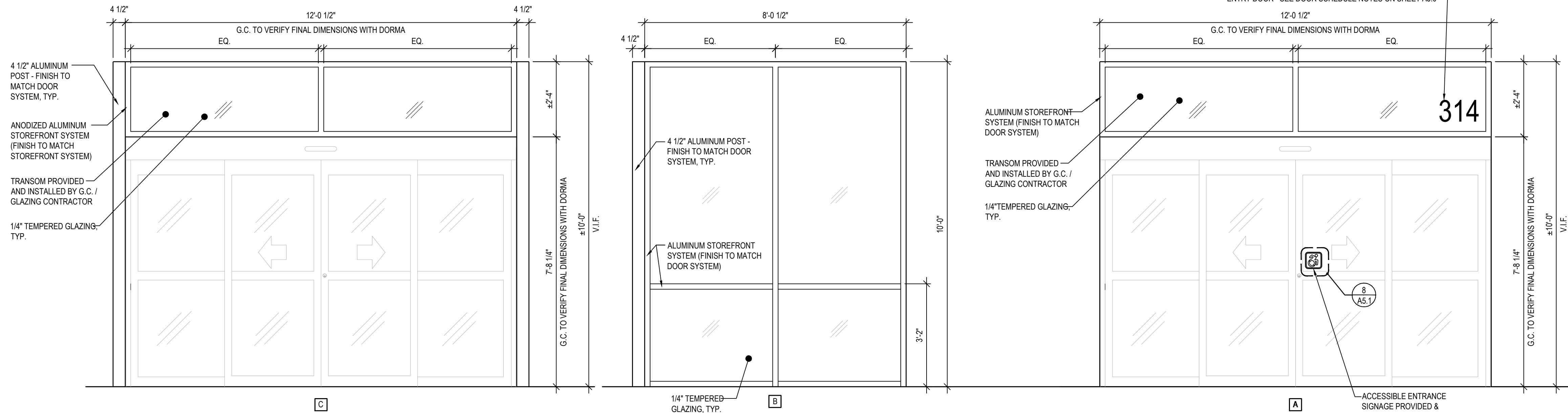
7 STOREFRONT JAMB DETAIL
SCALE: 3\"/>



6 STOREFRONT JAMB DETAIL
SCALE: 3\"/>

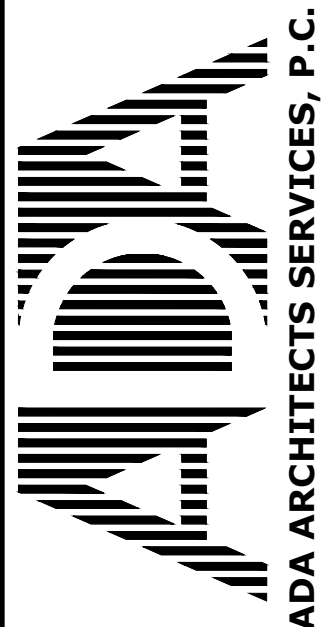


8 ACCESSIBLE ENTRANCE SIGNAGE
SCALE: 3\"/>



2 STOREFRONT ELEVATIONS
SCALE: 1/2\"/>

DO NOT SCALE THESE DRAWINGS



HARBOR FREIGHT TOOLS

NYACK, NY 10960

314 NY ROUTE 59

THESE DOCUMENTS CONTAIN INFORMATION PROPRIETARY TO ADA ARCHITECTS SERVICES, P.C. UNAUTHORIZED USE OF THESE DOCUMENTS IS EXPRESSLY PROHIBITED UNLESS AGREED UPON IN WRITING.

ADA ARCHITECTS SERVICES, P.C.
17710 Detroit Avenue
Phone (216) 521-5134
Fax (216) 521-4824
www.adaarchitects.com

REVISIONS

#	DATE	TYPE
1		
2		
3		
4		
5		
6		
7		
8		
9		

ENLARGED VESTIBULE PLAN & DETAILS

DATE 9/22/21

JOB NO. 20420

A5.1
SHEET NO.