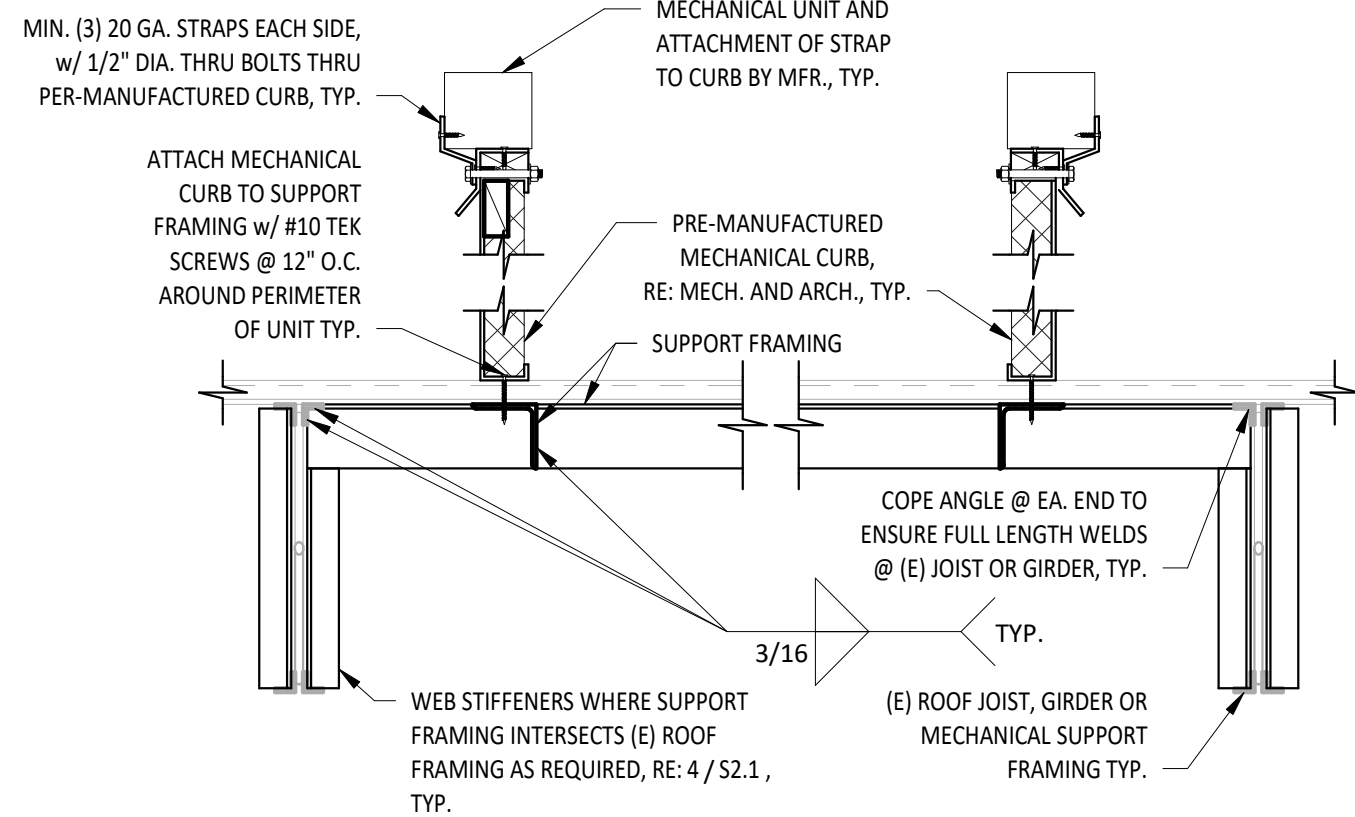


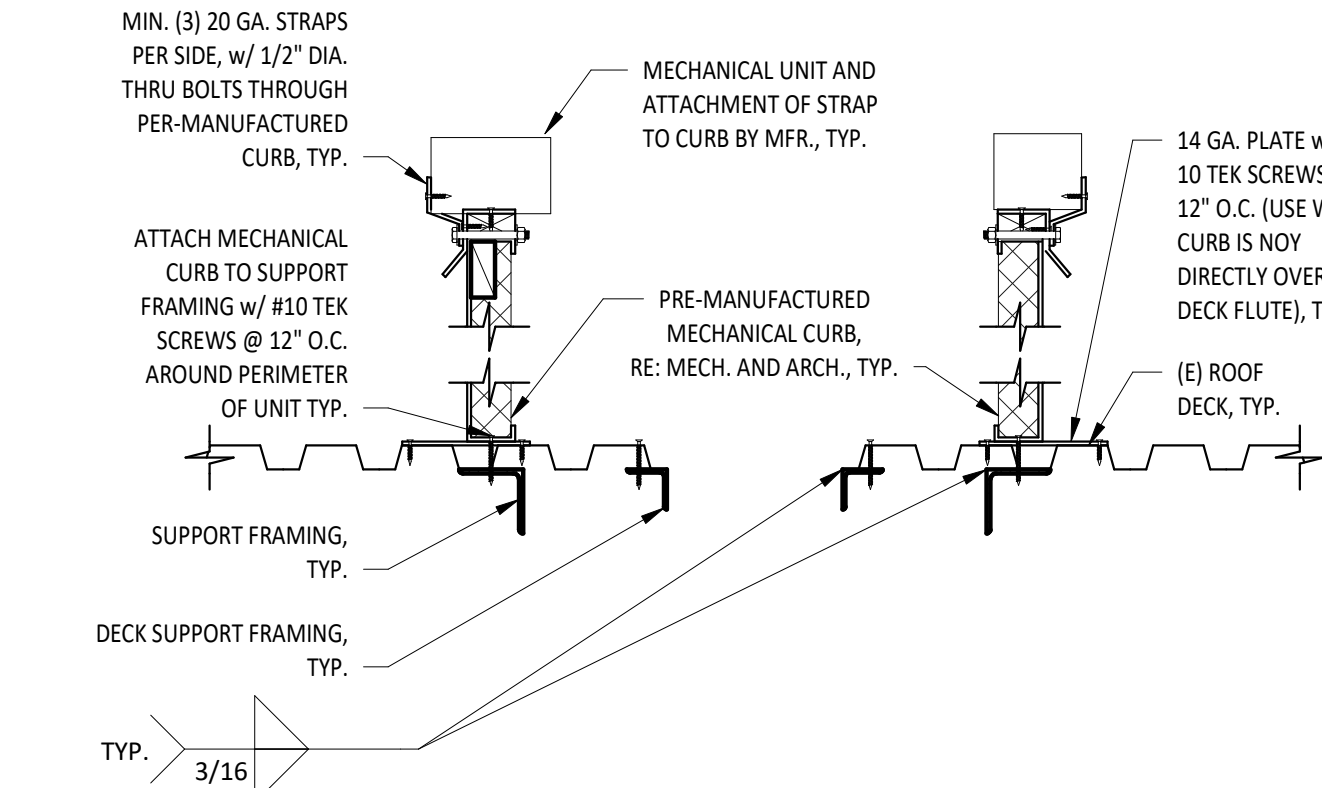
**NOTE:**

- REFER TO MECHANICAL FOR EXACT LOCATION AND SIZE OF ROOF OPENINGS. PROVIDE DECK SUPPORT FRAMING FOR OPENINGS LARGER THAN 12" DIA. OR 12"x12" SQ. G.C. TO ENSURE THAT NO STRUCTURAL FRAMING MEMBERS ARE CUT OR DAMAGED WHEN OPENING IS CUT.
- FASTEN DECK SUPPORT FRAMING TO (E) ROOF DECK AROUND MECHANICAL OPENING w/ #10 TEK SCREWS @ 6" O.C., USING NEOPRENE WASHERS.
- REFER TO MECHANICAL FOR EXACT LOCATION OF MECHANICAL UNIT. PROVIDE MECHANICAL UNIT SUPPORT FRAMING UNDER ENTIRE CURB. ATTACH CURBING TO EXISTING FRAMING MEMBERS, IF DIRECTLY UNDER CURB, IN LIEU OF ANGLE SUPPORT FRAMING.

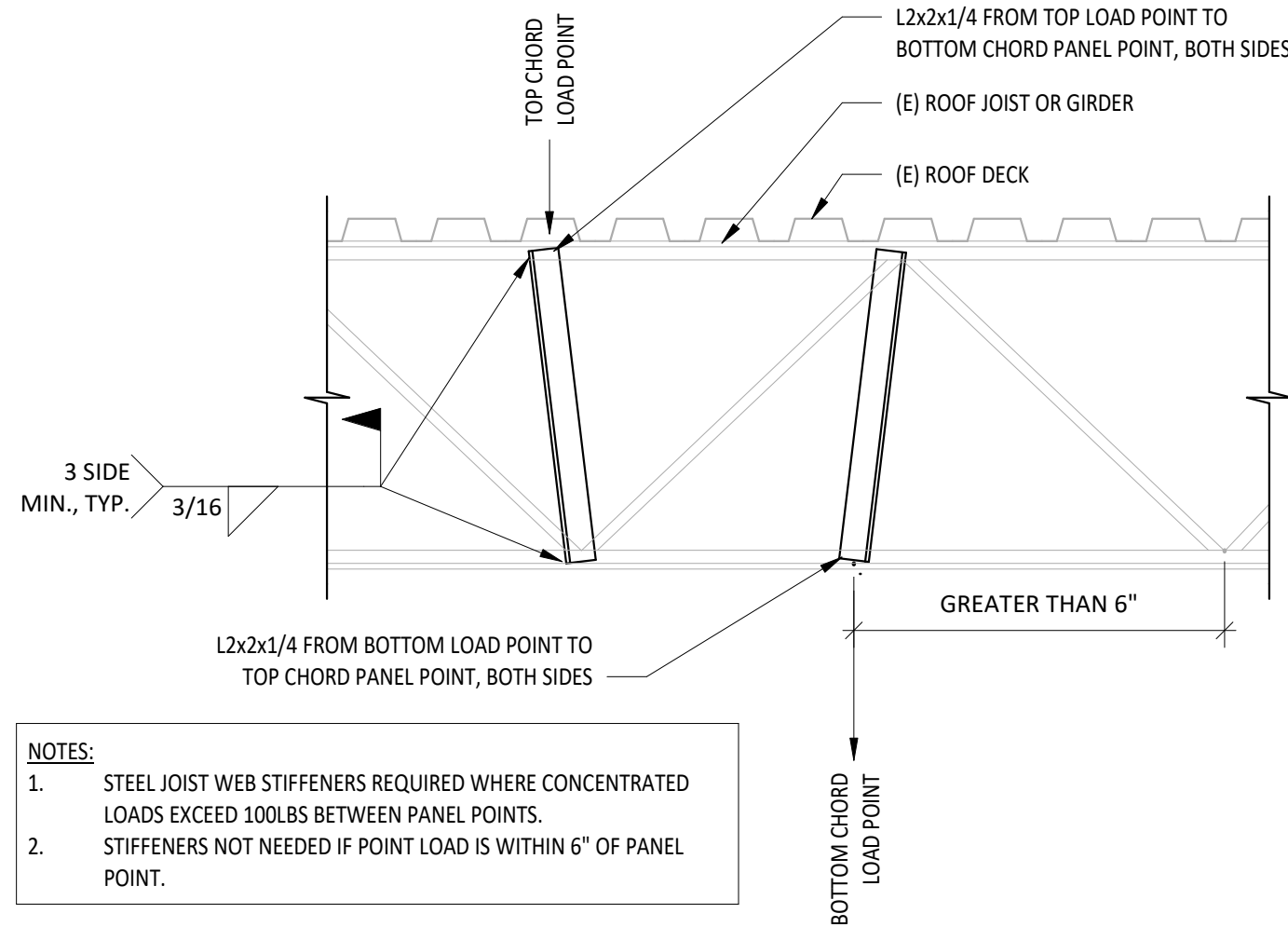
1 MECHANICAL UNIT SUPPORT FRAMING  
1" = 1'-0"



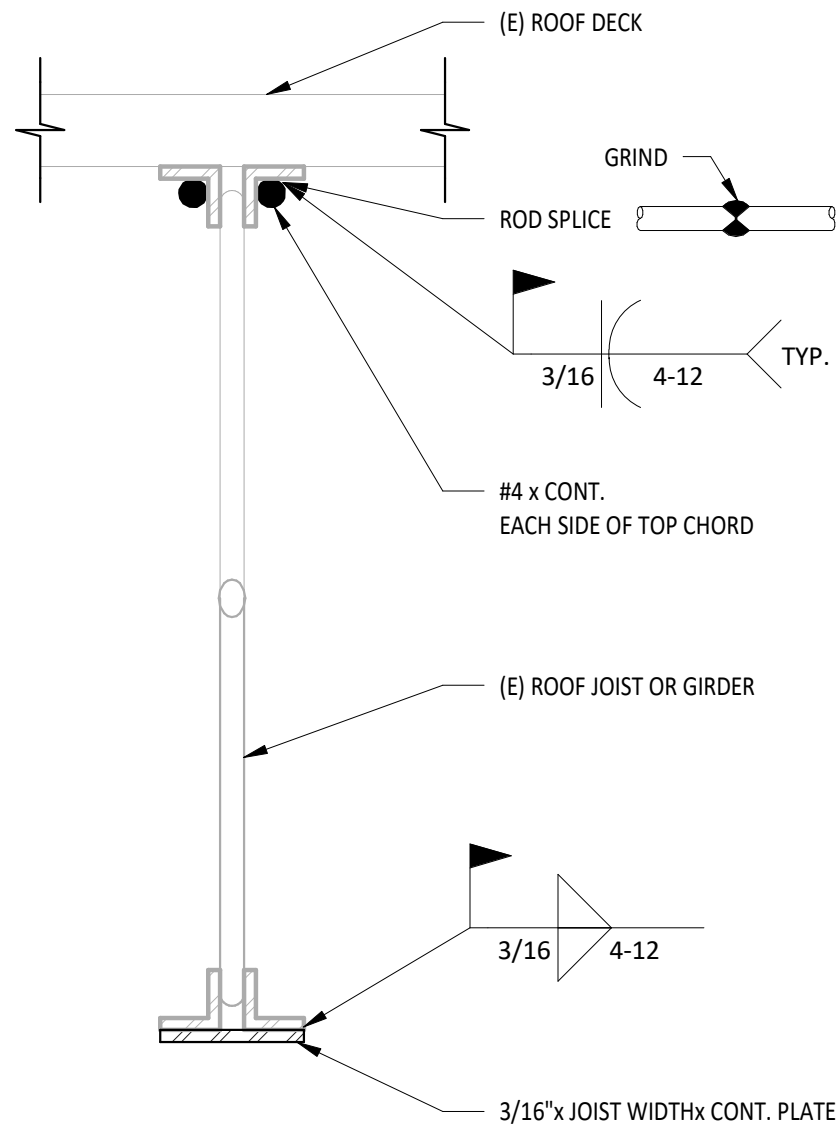
2 MECHANICAL UNIT SUPPORT FRAMING SECTION  
1" = 1'-0"



3 MECHANICAL UNIT SUPPORT FRAMING SECTION  
1" = 1'-0"



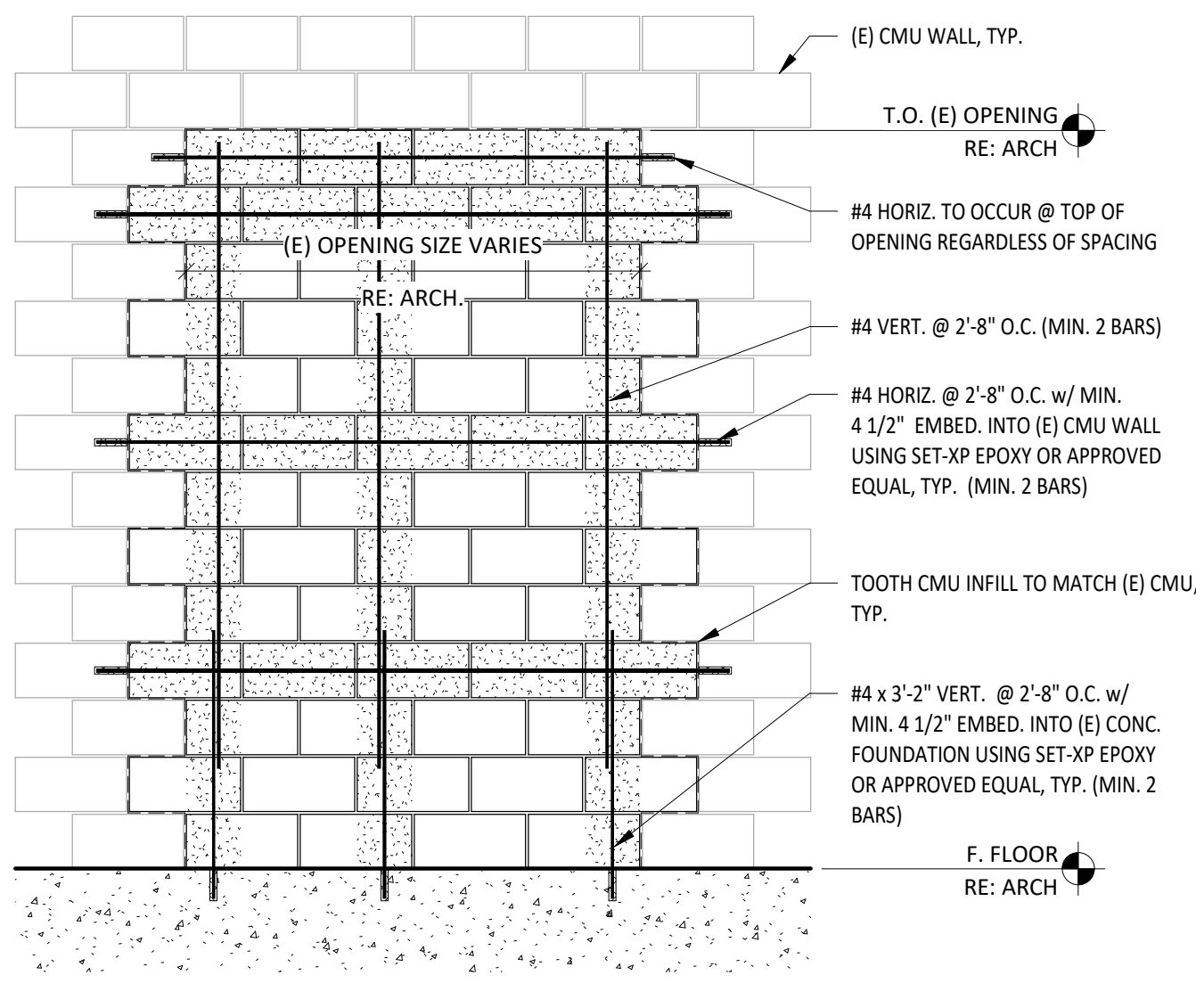
4 (E) STEEL TRUSS WEB STIFFENERS  
1" = 1'-0"



**NOTE:**

- REINFORCING TO OCCUR THE WHOLE LENGTH OF THE JOIST.
- ROOF JOISTS NEED TO BE REINFORCED WHILE IN THE SHORED POSITION.
- ROOF JOISTS TO BE REINFORCED BEFORE MECHANICAL UNIT LOADS ARE APPLIED AND WHILE EXISTING ROOF LIVE LOAD IS REMOVED.

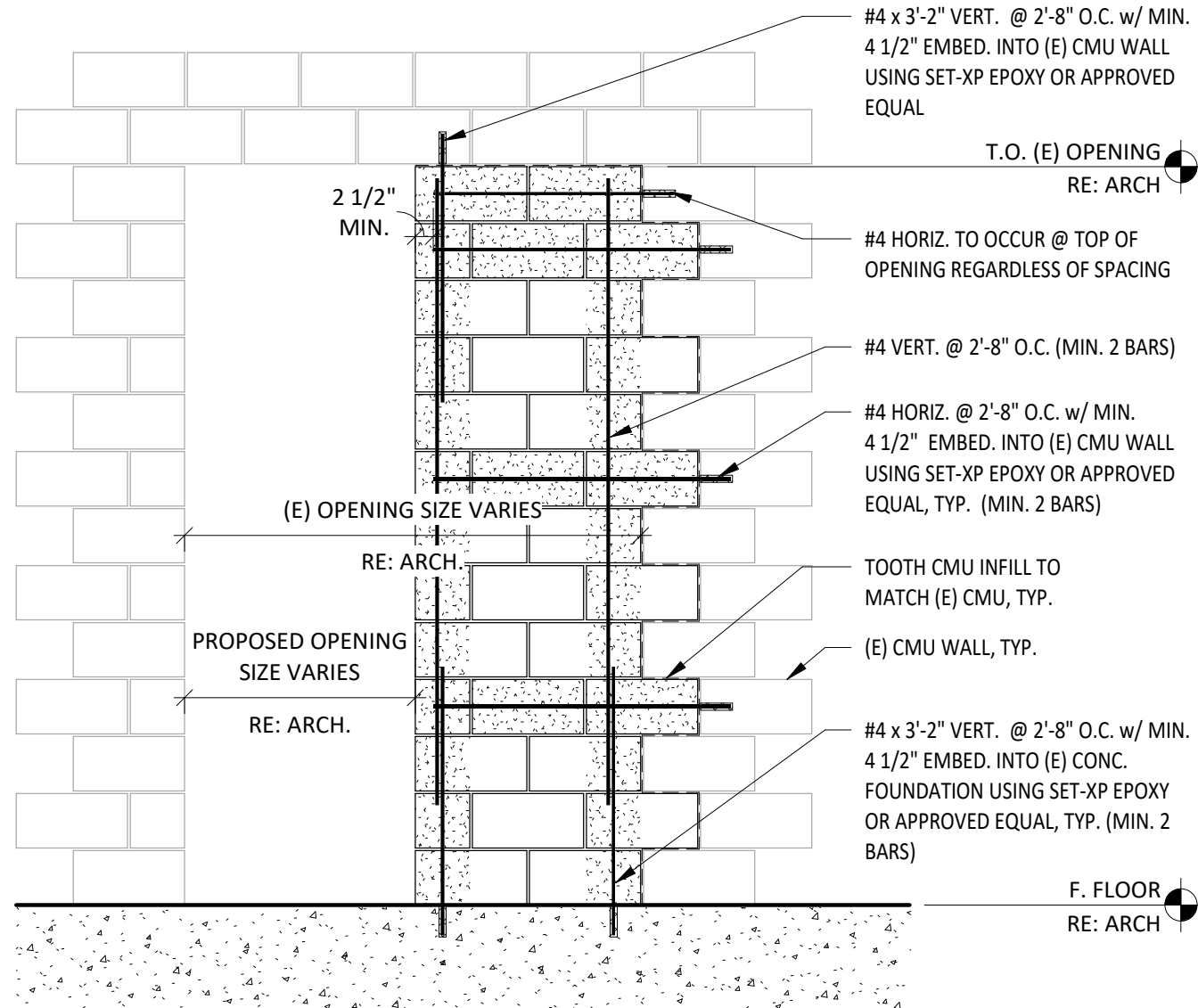
5 (E) STEEL TRUSS CHORD REINFORCING  
3" = 1'-0"



**NOTES:**

- MASONRY VENEER MAY OCCUR (BUT IS NOT SHOWN FOR CLARITY), RE: ARCH.
- HORIZ. BARS SHOULD BE CENTERED IN CMU BLOCK.
- APPROVED SCREEN TUBES MAY BE USED WHEN EPOXYING INTO HOLLOW CMU.

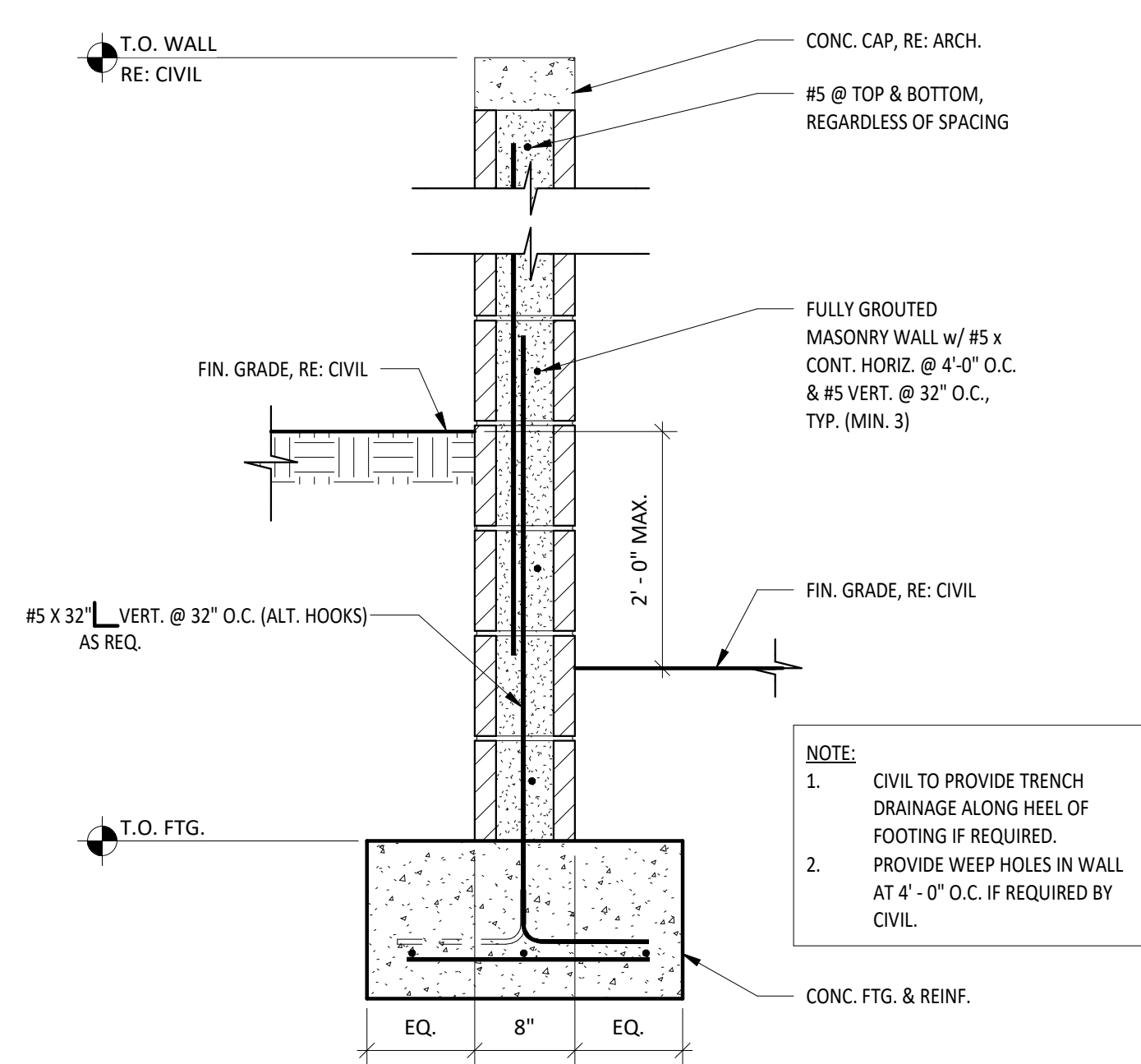
6 CMU INFILL AT (E) CMU WALL  
1/2" = 1'-0"



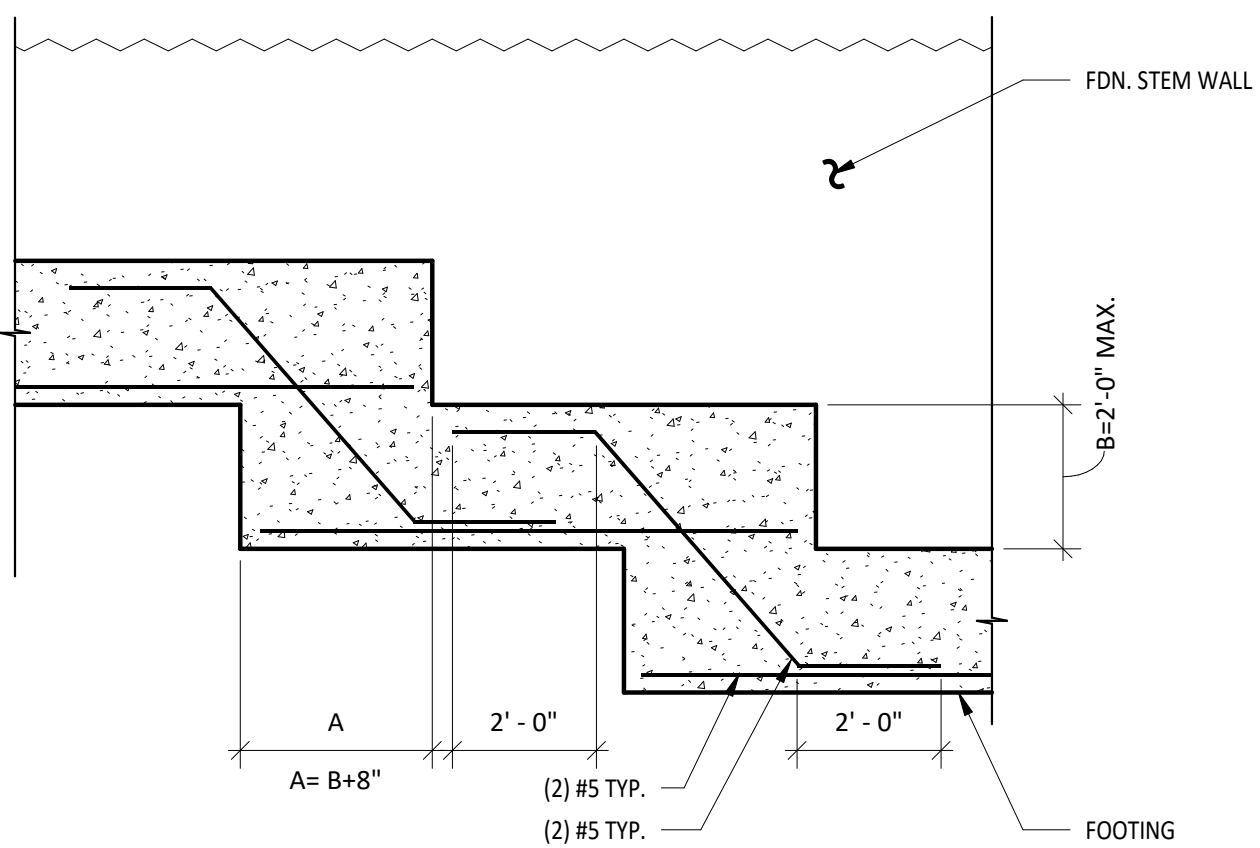
**NOTE:**

- MASONRY VENEER MAY OCCUR (BUT IS NOT SHOWN FOR CLARITY), RE: ARCH.
- HORIZ. BARS SHOULD BE CENTERED IN CMU BLOCK.
- APPROVED SCREEN TUBES MAY BE USED WHEN EPOXYING INTO HOLLOW CMU.

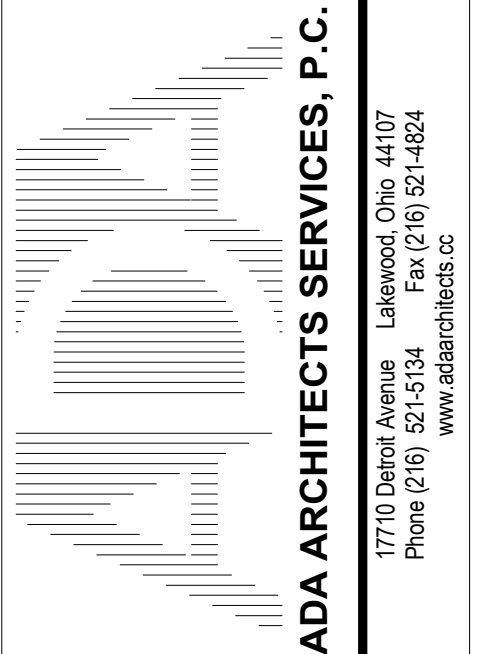
7 PARTIAL CMU INFILL AT (E) CMU WALL  
1/2" = 1'-0"



8 CMU RETAINING WALL  
1" = 1'-0"



9 CONCRETE FOUNDATION WALL AT STEPPED FOOTING  
3/8" = 1'-0"



# HARBOR FREIGHT TOOLS

NYACK, NY 10960

314 NY ROUTE 59

THESE DOCUMENTS CONTAIN INFORMATION PROPRIETARY TO ADA ARCHITECTS SERVICES, P.C.  
UNAUTHORIZED USE OF THESE DOCUMENTS IS EXPRESSLY PROHIBITED UNLESS AGREED UPON IN WRITING.

## REVISIONS

#	DATE	TYPE
1		
2		
3		
4		
5		
6		
7		
8		
9		
10		

## STRUCTURAL DETAILS

DATE 9/22/21

JOB NO. 20420

S2.1

SHEET NO.



812 S. La Cassia Drive  
Boise, ID 83705

(208) 345-8941  
(208) 345-8946  
www.tamarackgrove.com  
Firm No. 87979

Project No: TGE21-17855  
Checked By: DDH  
Drawn By: TW