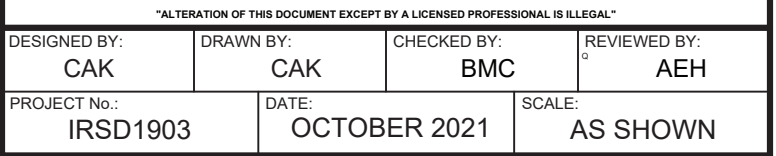


--

[illegible]

**Irvington Union Free  
School District**

## Facilities Storage Building at Irvington Campus



**Irvington Campus  
40 N. Broadway  
Irvington, NY 10533**

**SED Number:66-04-02-02-2-022-001**

CONTRACT

**CONTRACT G**

**GENERAL CONSTRUCTION**

STATUS **FINAL BID DOCUMENT**

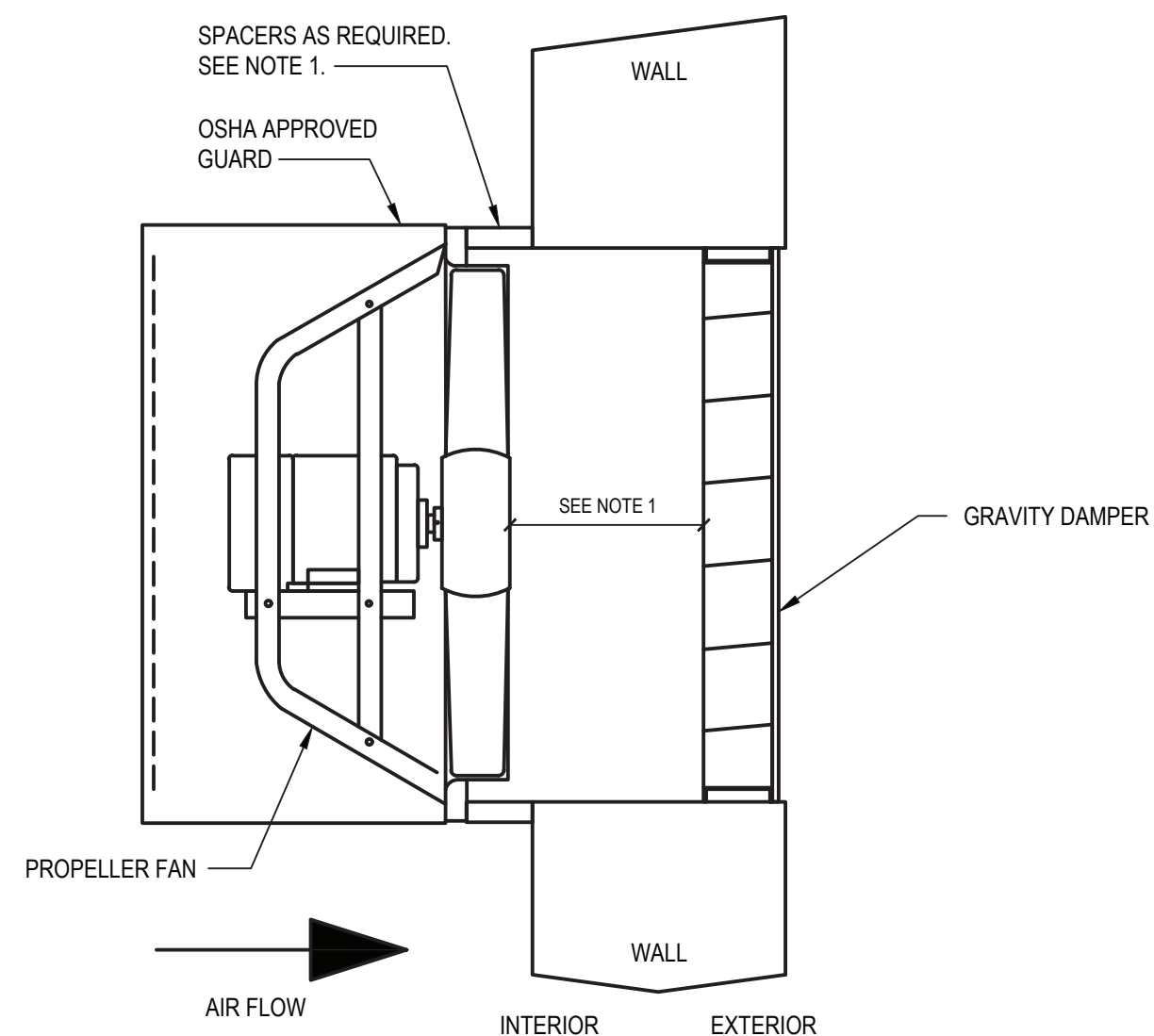
SHEET TITLE

**HVAC  
HIGH SCHOOL FACILITIES  
STORAGE BUILDING HVAC  
CONSTRUCTION**

# H1.0

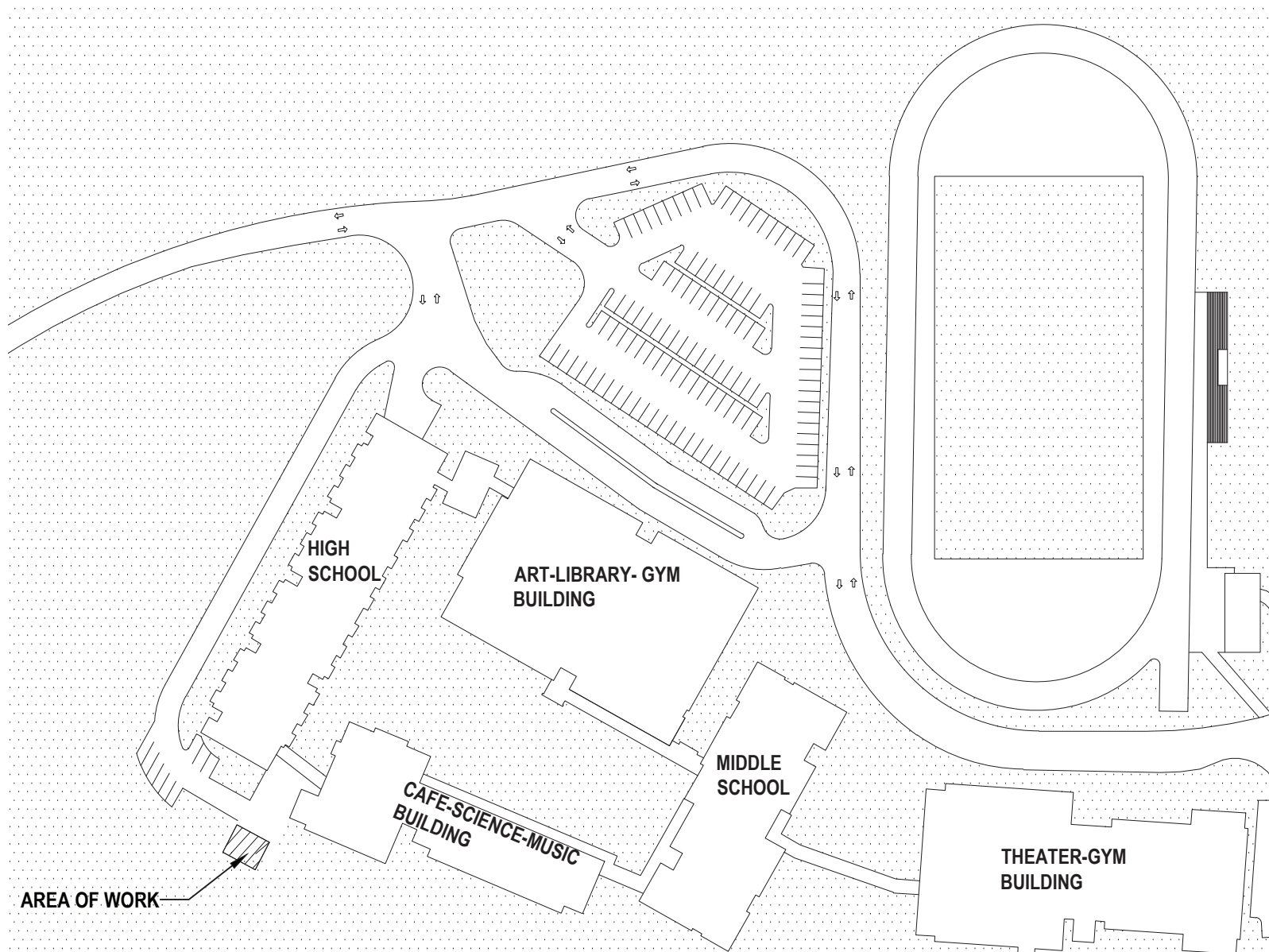
- A. THESE DRAWINGS SERVE AS A GRAPHICAL REPRESENTATION OF THE INTENDED SCOPE OF WORK AND CONSTITUTE ONE PORTION OF THE CONSTRUCTION DOCUMENTS. THE CONTRACTOR SHALL BE RESPONSIBLE FOR COORDINATION BETWEEN THESE DRAWINGS AND THE SPECIFICATIONS.
- B. ALL WORK SHALL BE IN COMPLIANCE WITH ALL FEDERAL AND NEW YORK STATE APPLICABLE BUILDING CODE.
- C. REFER TO SEQUENCE OF OPERATIONS FOR DETAILS REGARDING EXHAUST FAN (GX-1) CONTROLS.
- D. ALL WORK SHALL BE IN COMPLIANCE WITH MANUFACTURER'S CLEARANCE REQUIREMENTS.
- E. DO NOT SCALE DRAWINGS. LINE WORK IS SHOWN FOR REFERENCE ONLY.
- F. COORDINATE FINAL LOCATIONS OF SENSORS / SWITCHES WITH OWNER.
- G. COORDINATE NEW WORK WITH OTHER TRADES.

- 1 PROVIDE AND INSTALL NEW ELECTRIC UNIT HEATER EUH-1, 2 WITH APPROPRIATE MOUNTING HARDWARE. MOUNT NEW ELECTRIC UNIT HEATER AS PER MANUFACTURER'S SPECIFICATIONS.
- 2 PROVIDE AND INSTALL NEW SIDEWALL EXHAUST FAN GX-1 WITH APPROPRIATE MOUNTING HARDWARE. MOUNT NEW SIDEWALL EXHAUST FAN AS PER MANUFACTURER'S SPECIFICATIONS. COORDINATE FINAL HEIGHT WITH ARCHITECTURAL / STRUCTURAL PLANS, AND EXISTING SLOPE OF GRADE.
- 3 PROVIDE AND INSTALL NEW SIDEWALL INTAKE LOUVER 'A' WITH APPROPRIATE MOUNTING HARDWARE. MOUNT NEW SIDEWALL INTAKE LOUVER AS PER MANUFACTURER'S SPECIFICATIONS. COORDINATE FINAL HEIGHT WITH ARCHITECTURAL / STRUCTURAL PLANS, AND EXISTING SLOPE OF GRADE.
- 4 NEW MOTORIZED DAMPER SHALL BE INTERLOCKED WITH NEW EXHAUST FAN GX-1. DAMPER SHALL OPEN WHEN GX-1 ACTIVATES (REFER TO SPECIFICATIONS AND ELECTRICAL DRAWINGS FOR DETAILS).

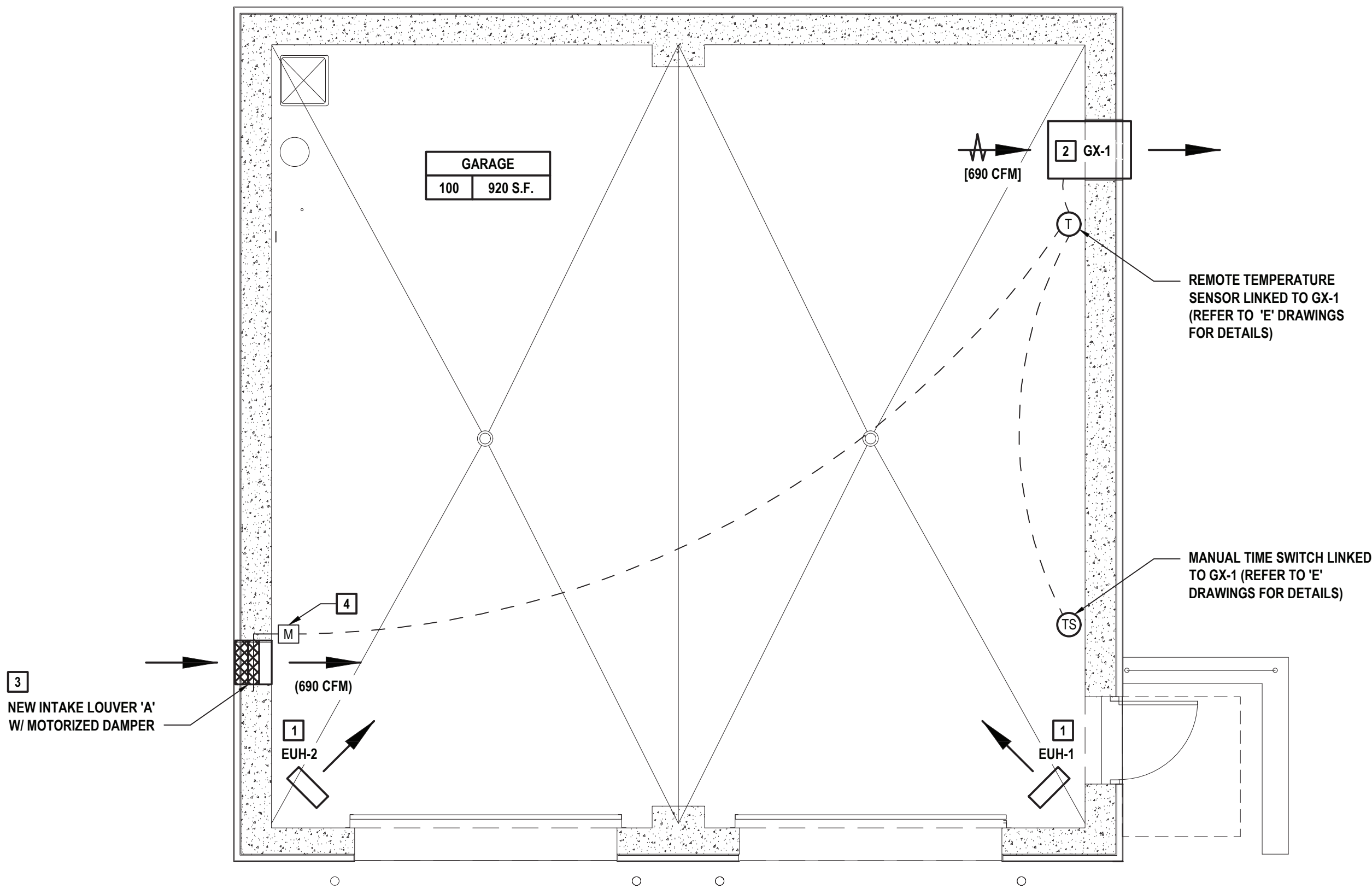


1. MAINTAIN MINIMUM CLEARANCE BETWEEN FAN PROPELLER AND LOUVER AS PER MANUFACTURER'S INSTALLATION MANUAL. PROVIDE SPACERS AS NECESSARY TO MAINTAIN CLEARANCE CALLED FOR IN MANUAL.

2) SCALE: NTS (DETAIL #



**Key Plan**   
SCALE: N.T.S.



SCALE: 1/4"=1'-0"



EQUIPMENT NO.	LOCATION	AREA SERVED	BASIS OF DESIGN INFORMATION									REMARKS				
			FAN DATA			TOTAL CAPACITY (MBH)	AIR DATA		HEATING COIL DATA				MNF	MODEL NO.	NOMINAL DIMENSIONS L x W x H	NOMINAL OPERATING WEIGHT (LBS.)
			FLOW (CFM)	HP	VOLTS/ PHASE		TEMP. CHANGE (DEG. F)	THROW (FT.)	ELECTRIC DATA							
									VOLTS/ PHASE	TOTAL KW	AMPS					
EUH-1, 2	SEE PLANS	STORAGE AREA	650	1/30	208/1	25.6	37	18	208/1	7.5	36	QMARK	MUH-07-8	19 x 7.5 x 21.75	38	1-4

1. PROVIDE AND INSTALL MANUFACTURER SPECIFIED MOUNTING BRACKET
2. SINGLE POLE INTERNAL THERMOSTAT ACCESSORY (UHMT1)
3. 3-POLE POWER DISCONNECT SWITCH (MPDS60)
4. OUTLET MESH (BIRD SCREEN)

EQUIPMENT NO.	LOCATION	SYSTEM SERVED	PERFORMANCE/CONSTRUCTION REQUIREMENTS				BASIS OF DESIGN INFORMATION					REMARKS	
			CFM	EXT S. P. (IN. W.C.)	FAN/MOTOR RPM	BHP	MNF	MODEL NO.	NOMINAL DIMENSIONL x W. x H	NOMINAL OPERATING WEIGHT (LBS.)	ELECTRICAL DATA		
											VOLTS/PHASE		MOTOR HP
GX-1	SEE PLANS	STORAGE AREA	690	0.3	776	0.18	GREENHECK	SBE-1H20-4	38 x 26.25 x 26.25	152	115/1	1/4	1-4

1. LONG WALL HOUSING WITH OSHA GUARD
2. NEMA 3R POWERED DISCONNECT SWITCH
6. DAMPER MOUNTED WD-320-PB-22X22
7. SINGLE POINT POWER CONNECTION
8. DAMPER ACTUATOR (MP-310)

DESIGNATION	TYPE	BASIS OF DESIGN: MANUFACTURER	BASIS OF DESIGN: MODEL NO.	NOM. DIMENSIONS	FREE AREA (%)	VOLUME (CFM)	FREE AREA VELOCITY (FPM)	PRESSURE DROP (IN. W.G.)	REMARKS
A	INTAKE LOUVER	GREENHECK	ESD-635HP	20 x 20 x 6	42.5	690	566	0.05	1-3

1. (20x20) VCD-23 LOW LEAKAGE 3V BLADE VOLUME CONTROL DAMPER
2. HONEYWELL MS4103F1225 ACTUATOR
3. GREENHECK POC RETAINING ANGLE