

LIGHTING FIXTURE SCHEDULE									
TYPE	DESCRIPTION	LOCATION	MANUFACTURER & CATALOG #	LAMPS NO.	TYPE	VOLTS	WATTAGE	DIM. BALLAST OR DRIVER	
A1	SURFACE MOUNTED FIXTURE	THROUGHOUT	VELA-DIR-RD-SUR-4H-OP-3BK-C80-INV - 05000L - DH-2T	1	LED	120V	39W	□	
A2	SURFACE MOUNTED FIXTURE	THROUGHOUT	VELA-DIR-RD-SUR-4H-OP-3BK-C80-INV - 04000L - DH-2T	1	LED	120V	39W	□	
B1	LED RECESSED 2x4' FIXTURE	THROUGHOUT	COLUMBIA LIGHTING V6124	□	LED	120V	31W	0-10V	
B2	LED RECESSED 2x2' FIXTURE	THROUGHOUT	COLUMBIA LIGHTING V6122	□	LED	120V	35W	0-10V	
C1	LED RECESSED 2x4' FIXTURE	THROUGHOUT	LUCEN LU24-A-839MO-G1	□	LED	120V	32W	0-10V	
C2	LED RECESSED 2x2' FIXTURE	THROUGHOUT	LUCEN LU22-A-839MO-G1	□	LED	120V	31W	0-10V	
D1	STEP LIGHT SERIES	THATER	STLE625-810/C-LED-30K-SMOKE(8LC)	□	LED	120VDC	0.45W	□	
D2	STEP LIGHT SERIES	THATER	STLE625-810/C-LED-30K-SMOKE(8LC)	□	LED	120VDC	0.45W	□	
E	FLUSH MOUNT LED FIXTURE	STAIRWAY	MAJESTIC LIGHTING C1043	1	LED	120V	23W	□	
F	4' LED DOWNLIGHT	VESTIBULE	FRESCOLITE LTR-4RD	1	LED	120V	12W	0-10V	
G	WALL LIGHTS	VESTIBULE	DICH-DM II 2-071	1	LED	120V	12W	□	
H	LED LINEAR FIXTURE	THROUGHOUT	COLUMBIA LIGHTING MP6 MULTIPURPOSE LINEAR	1	LED	120V	30W	□	
J	LED LENSED STRIPLIGHT	THROUGHOUT	COLUMBIA LCL8-38-VL-E-U-C8HC	1	LED	120V	51W	□	
K	LED ROUND DOWNLIGHT	AUDITORIUM	FRESCOLITE LTR-4RD	1	LED	120V	35W	0-10V	
L	DECOR FIXTURE	STAIRWAY	FC LIGHTING FCUL165-INV-3BK-CR85-2SL-BA	1	LED	120V	20W	0-10V	
M	EXTERIOR DECOR FIXTURE	EXTERIOR WALLS	FC LIGHTING FCUL110-INV-3BK-CR85-2SL-BA	1	LED	120V	21W	0-10V	
P	3' LED RECESSED DOWNLIGHT	ENTRANCE VESTIBULE	FRESCOLITE LTR-3RD	1	LED	120V	25W	0-10V	
Q	4' LED SURFACE MOUNT FIXTURE	ELEVATOR	ELITE LED LIGHTING RL410	1	LED	120V	10W	□	
R1	4' LED ROUND ADJUSTABLE FIXTURE	THEATRE	FRESCOLITE LTR-4RA	1	LED	120V	43W	0-10V	
R2	4' LED ROUND ADJUSTABLE FIXTURE	THEATRE	FRESCOLITE LTR-4RD	1	LED	120V	43W	0-10V	
S	LED ELEVATOR SHAFT FIXTURE	ELEVATOR	LED VAPORITITE SERIES SEVER LOCATION	1	LED	120V	21W	□	
T	WALL MOUNTED SITE LIGHTING EXTERIOR	SITE LIGHTING EXTERIOR	GEOPAK ARCHITECTURAL WALLPACKS CAT. 108P1-24L-30-3KT-4	1	LED	120V	30W	0-10	
T2	WALL MOUNTED SITE LIGHTING EXTERIOR	SITE LIGHTING EXTERIOR	GEOPAK SERIES 1 WITH BATTERY BACK-UP. CAT.108P1-DL-30-3KT-3-UNV	1	LED	120V	22W	0-10	
U1	WALL MOUNTED EXTERIOR LIGHT FIXTURE	SITE LIGHTING EXTERIOR	BEACON VIPER L STRIKE CAT. MP-L-64L-135-3KT-3	1	LED	120V	15W	□	
U2	POLE MOUNTED EXTERIOR LIGHT FIXTURE	SITE LIGHTING EXTERIOR	BEACON VIPER L STRIKE CAT. MP-L-64L-135-3KT-3	1	LED	120V	15W	□	
U3	POLE MOUNTED EXTERIOR LIGHT FIXTURE	SITE LIGHTING EXTERIOR	BEACON VIPER L STRIKE CAT. MP-L-64L-135-3KT-5W	1	LED	120V	15W	□	
V	HIGH PERFORMANCE SINGLE LAMP 0-10V BOLLARD LIGHT FIXTURE	SITE LIGHTING EXTERIOR	KIM LIGHTING B30 LED CAT.1B30-0R-10L-3K	1	LED	120V	----	0-10	
W	POLE MOUNTED EXTERIOR LIGHT FIXTURE WITH 800L LED LAMP	SITE LIGHTING EXTERIOR	BEACON SLIDE SERIES CAT. 16LD-36L 80-3KT-4	1	LED	120V	80W	□	
EM-A	LED LAMP FIXTURE	TBD	REFER TO ARCHITECTURAL DRAWINGS FOR SPECIFICATIONS	2	LED	120V	20W	□	
EM-B	RECESSED LED LIGHT FIXTURE	TBD	REFER TO ARCHITECTURAL DRAWINGS FOR SPECIFICATIONS	2	LED	120V	20W	□	
⓪	EXIT SIGN	THROUGHOUT	REFER TO ARCHITECTURAL DRAWINGS FOR SPECIFICATIONS	1	LED	120V	25W	□	

LIGHTING FIXTURE NOTES:

- ALL LIGHT FIXTURE MOUNTING HARDWARE SHALL MATCH AND BE COORDINATED WITH THE SELECTED CEILING SYSTEM AND CONSTRUCTION. REFER TO ARCHITECTURAL DRAWINGS FOR EXACT MOUNTING REQUIREMENTS AND SPECIFICATION OF FIXTURES.
- PENDENT RODS, CABLES AND CHAINS SHALL BE PROVIDED FOR FIXTURES USED IN ROOMS WITHOUT CEILING.
- ALL LIGHTING FIXTURE TRIMS AND FINISHES SHALL BE APPROVED BY THE ARCHITECT PRIOR TO PURCHASE.
- REFER TO ARCHITECTURAL/INTERIOR DESIGNER PLANS FOR LIGHTING FIXTURE TYPES AND SPECIFICATIONS. THE ABOVE LIGHT FIXTURE DESCRIPTIONS ARE FOR CONTRACTOR INFORMATION AND REFERENCE ONLY.
- FIXTURES DESIGNATED AS "EM" EXCLUSIVE OF THEATER AREAS SHALL BE PROVIDED WITH AN INTEGRAL EMERGENCY BATTERY PACK ENABLING FIXTURE TO CONNECT TO AN EMERGENCY SOURCE WHEN LOSS OF NORMAL POWER OCCURS. ON/OFF CONTROL SHALL NOT CAUSE FIXTURE PACKS TO ENERGIZE. PROVIDE UNSWITCHED PHASE LEG TO BATTERY PACK UNIT. EXIT AND EMERGENCY LIGHT FIXTURE TYPES AND LOCATIONS ARE SUBJECT TO BUILDING APPROVAL.
- LOWER CASE LETTERS NEXT TO A FIXTURE SHALL DENOTE SWITCH CONTROL AND THEREFORE BE CONNECTED TO THE SWITCH IN THE SAME ROOM WITH SAME LOWER CASE LETTER.
- CONTRACTOR TO COORDINATE WIRING REQUIREMENTS, MAXIMUM ALLOWABLE DISTANCE OF CONDUCTORS AND SIZES WITH MANUFACTURER/ARCHITECT. CONTRACTOR TO COORDINATE THE SIZES FOR ALL REMOTE TRANSFORMERS AND EXACT ACCESSIBLE LOCATIONS WITH ARCHITECT.
- ALL SWITCH TYPES AND SPECIFICATIONS TO BE SUBMITTED FOR ARCHITECT AND ENGINEER FOR REVIEW APPROVAL.
- ALL LIGHTING FIXTURES, EQUIPMENT, DEVICES, ETC. SHALL BE UL LISTED. ALL LIGHT FIXTURES, EQUIPMENT, WIRING METHODS, ETC. WITHIN A CEILING RETURN AIR PLENUM SHALL COMPLY WITH NEC SECTION 300-22, AND ANY ADDITIONAL BUILDING REQUIREMENTS. VERIFY IF ANY ADDITIONAL BUILDING REQUIREMENTS WITH THE ARCHITECT PRIOR TO BID.

ELECTRICAL SYMBOLS

-
-
-
-
-
-
-
-
-
-
-
-
-
-
-
-
-
-
-
-

SECURITY SYSTEM NOTES:

- SECURITY DEVICES AND WIRING SHALL BE BY SECURITY VENDOR.
- CONTRACTOR TO PROVIDE AND INSTALL JUNCTION BOXES AND EMPTY CONDUIT STUB-UPS WITH DRAGLINES INTO CEILING SPACE WITH BUISHED ENDS FOR CABLE PULLS.
- REFER TO CLIENTS SECURITY VENDORS FOR ADDITIONAL DETAILS.

ABBREVIATIONS

(NOT ALL ABBREVIATIONS ARE NECESSARILY USED ON THIS PROJECT)

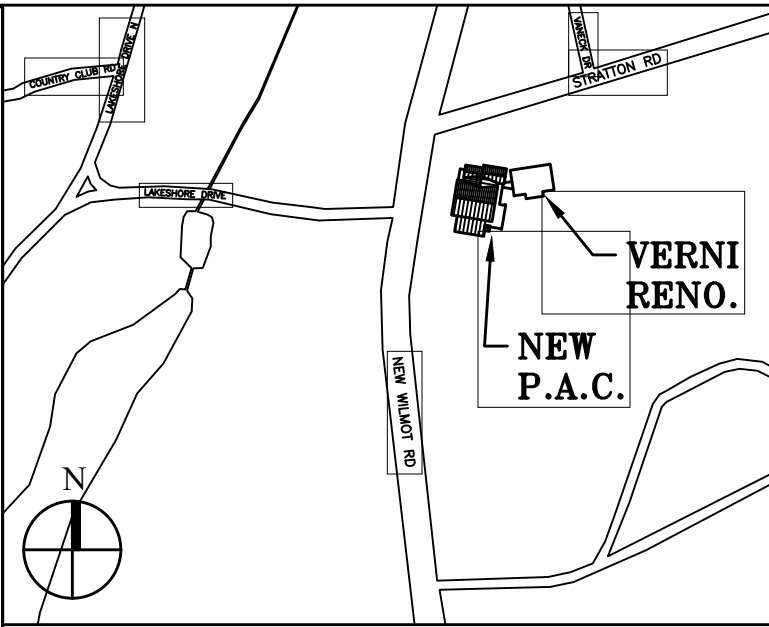
A	AMP/AMPERE	LD	LEAK DETECTOR
ACU	AIR CONDITIONING UNIT	LDP	LEAK DETECTION PANEL
ADA	AMERICANS WITH DISABILITIES ACT	LTG	LIGHTING
AFF	ABOVE FURNISHED FLOOR	MAX	MAXIMUM
AHJ	AUTHORITIES HAVING JURISDICTION	MCB	MAIN CIRCUIT BREAKER
AHJ	AIR HANDLING UNIT	MD	MOTORIZED DAMPER
AL	ALUMINUM	MECH	MECHANICAL
AV	AUDIO VISUAL	MER	EQUIPMENT ROOM MAIN LUG ONLY
AWG	AMERICAN WIRE GAUGE	MLO	MOTORIZED SHADE MOUNTED
C, CDT	CONDUIT	N	NEW
CB	CIRCUIT BREAKER	NE	NEUTRAL
CKT	CIRCUIT	NR	NEW TO REPLACE EXISTING
CP	CONDENSATE PUMP	NF	NON-FUSED
CU	COPPER	NIC	NOT IN CONTRACT
DISC	DISCONNECT	NL	NIGHT LIGHT
DWG	DRAWING	NTS	NOT TO SCALE
E	ELECTRICAL	P	POLE
EC	ELECTRICAL CONTRACTOR	FB	FULL BOX PHASE
EF	EXHAUST FAN	PH	PHASE
EHC	ELECTRIC HEAT COIL	PS	PROJECTION SCREEN
ELEC	ELECTRICAL	PNL	PANEL
EM	EMERGENCY	R	REMOVE EXISTING EQUIPMENT
EUH	ELECTRIC HOT WATER HEATER	RE	RELOCATED EXISTING (NEW LOCATION)
(ER)	EXISTING TO BE RELOCATED	RECEPT	RECEPTACLE
FA	FIRE ALARM	RG&C	RIGID GALVANIZED STEEL CONDUIT
FBO	FURNISHED BY OTHERS, INSTALLED AND WIRED BY THE ELECTRICAL CONTRACTOR	RM	ROOM
FCU	FAN COIL UNIT	SD	SMOKE DETECTOR
FEET	FEET	SPEC	SPECIFICATION
G, GND	GROUND	SW	SWITCH
GFI	GROUND FAULT INTERRUPTER	SWBD	SWITCHBOARD
HZ	HERTZ	TEL	TELEPHONE
IG	ISOLATED GROUND	TRF	TRANSFORMER
INFORMATION	INFORMATION	TV	TELEVISION
IT	TECHNOLOGY	TYP	TYPICAL
JB	JUNCTION BOX	UNF	UNFUSED
KVA	KILOVOLT/AMPERE THOUSAND	UNLESS OTHERWISE NOTED	UNLESS OTHERWISE NOTED
KMIL	KILOVOLT/AMPERE THOUSAND	V	VOLT/VOLTAGE
LCP	LIGHTING CONTROL PANEL	VA	VOLTAAMPERE
		VAV	VARIABLE AIR VOLUME
		W	WIRE
		WP	WEATHERPROOF

LINE REPRESENTATION

-
-
-
-

GENERAL NOTES

- ELECTRICAL DRAWINGS ARE DIAGRAMMATIC. SIZES AND LOCATION OF EQUIPMENT AND WIRING ARE SHOWN TO SCALE WHERE POSSIBLE, BUT MAY BE DISTORTED FOR CLARITY ON THE DRAWINGS. FINAL LOCATION OF OUTLETS AND EQUIPMENT SHALL BE AS APPROVED BY THE ARCHITECT. IT IS NOT WITHIN THE SCOPE OF THE DRAWINGS TO SHOW ALL NECESSARY BENDS, OFFSET, FULL BOXES AND OBSTRUCTIONS. IT IS THE CONTRACTOR'S RESPONSIBILITY TO INSTALL HIS WORK TO CONFORM TO THE CLEAN, STRUCTURE, PRESERVE HEADROOM AND KEEP OPENINGS AND PASSAGEWAYS CLEAR.
- REFER TO SPECIFICATIONS COVERING MECHANICAL, PLUMBING & FIRE PROTECTION WORK FOR POSSIBLE ADDITIONAL WORK TO BE PERFORMED UNDER THE ELECTRICAL CONTRACT.
- THE ELECTRICAL CONTRACTOR SHALL BE RESPONSIBLE FOR REVIEWING THE FULL SET OF BID DOCUMENTS TO BE AWARE OF THE TOTAL SCOPE PRIOR TO SUBMITTING BID.
- THE ELECTRICAL CONTRACTOR SHALL COORDINATE WORK WITH MECHANICAL, PLUMBING AND OTHER TRADES FOR EXACT LOCATION OF ALL CONTROL DEVICES. LOCATION AS SHOWN ON THE ELECTRICAL PLANS ARE APPROXIMATE. ALL FINAL CONNECTIONS TO MOTOR TERMINALS SHALL BE DONE WITH A MINIMUM 18" OF LIQUID TIGHT FLEXIBLE CONDUIT USING THE APPROPRIATE FITTINGS. PROVIDE EXTERIOR GROUND WIRE WRAPPED AROUND FLEXIBLE CONDUIT WHERE REQUIRED BY CODE.
- ALL NOTATIONS OF "SCALE" ARE INTENDED AS APPROXIMATIONS. THE CONTRACTOR SHALL BE RESPONSIBLE TO ASCERTAIN THE EXACT LOCATIONS OF ALL EQUIPMENT AND VERIFYING REQUIRED CLEARANCES.
- THIS CONTRACTOR SHALL FURNISH & INSTALL ALL LABOR AND MATERIALS REQUIRED TO PRODUCE COMPLETE AND WORKING SYSTEMS. HE SHALL FURNISH AND INSTALL COMPLETE WIRING FOR LIGHTING, POWER, HVAC EQUIPMENT, ETC.
- THE CONTRACTOR SHALL BE RESPONSIBLE FOR ALL FIELD MEASUREMENTS AND VERIFICATION OF FIELD CONDITIONS PRIOR TO PERFORMING HIS WORK. ANY CHANGES IN WORK NECESSITATED BY FAILURE OF THIS CONTRACTOR TO COMPLY WITH THIS CONDITION SHALL BE UNDERTAKEN BY THIS CONTRACTOR AT HIS OWN EXPENSE.
- ALL AREAS ABOVE PANELBOARDS SHALL BE FREE FROM WORK OF OTHER TRADES.
- ALL WORKING CLEARANCES FOR PANELBOARDS AND OTHER ELECTRICAL EQUIPMENT SHALL COMPLY WITH THE NEC ELECTRIC CODE & ASSOCIATED TABLES.
- NUMERAL INDICATED ADJACENT TO LIGHT FIXTURES, RECEPTACLES, DEVICES AND EQUIPMENT INDICATES CIRCUIT NUMBER. IN FANUCS CIRCUIT NUMBER CONDUIT TO INTERCONNECT THE AFOREMENTIONED, ASSOCIATED SWITCHES, AND CONTROL DEVICES WITH SAME CIRCUIT NUMBERS, ROUTE TO PANEL VIA CONDUIT HOMERUNS SHOWN.
- ELECTRICAL CONTRACTOR SHALL PROVIDE NEW AND UPDATED TYPEWRITTEN PANEL DIRECTORIES FOR EXISTING PANELS TO REMAIN. IN COMPLIANCE WITH NEC ARTICLE 408.4, THE IDENTIFICATION SHALL INCLUDE AN APPROVED DEGREE OF DETAIL THAT ALLOWS EACH CIRCUIT TO BE DISTINGUISHED FROM ALL OTHERS. CIRCUITS USED FOR THE SAME PURPOSE MUST BE IDENTIFIED BY THEIR LOCATION, UTILIZE ROOM NUMBERS, WORKSTATION NUMBERS, COLUMN GRID LINES, ETC. SUBMIT SCHEDULES TO ENGINEER FOR REVIEW PRIOR TO INSTALLATION.
- PROVIDE TIE BARS ON ALL SINGLE POLE CIRCUIT BREAKERS SERVING MULTI-WIRE BRANCH CIRCUITS IN COMPLIANCE WITH NEC ARTICLE 210.4 (B). EXISTING CIRCUIT BREAKERS REQUIRING TIE HANDLES SHALL BE REPLACED WITH NEW TRIP FREE HANDLE BREAKERS. NEW BREAKERS SHALL MATCH BASE BUILDING STANDARDS, SHALL BE FROM SAME MANUFACTURER OF EXISTING BREAKERS THAT ARE TO REMAIN IN PANEL, AND SHALL BE COMPATIBLE WITH PANELBOARD. CONTRACTOR SHALL COORDINATE REQUIREMENTS IN FIELD WITH EXISTING EQUIPMENT.
- ARMORED CABLE SHALL NOT BE INSTALLED EXPOSED IN ELECTRIC CLOSETS, MECHANICAL ROOMS, TELEPHONE CLOSETS, ETC. EMT OR CONDUIT SHALL BE UTILIZED FOR ELECTRIC CLOSET TO FIRST RECEPTACLE OR LIGHT FIXTURES.
- THE CONTRACTOR SHALL DO NECESSARY CUTTING, CHOPPING & PATCHING FOR WORK UNDER THIS CONTRACT. ALL CHOPPING, ETC. SHALL BE PERFORMED AFTER HOURS AND COORDINATED WITH BUILDING MANAGEMENT.
- THE ARCHITECT SHALL VERIFY MOUNTING HEIGHTS OF ALL DEVICES.
- FINISHES OF ALL RECEPTACLES, SWITCHES, TELEPHONE OUTLETS, ETC. TO BE SELECTED BY ARCHITECT.
- REFER TO ARCHITECTURAL DRAWINGS FOR LOCATION OF ALL RECEPTACLES, TELEPHONE OUTLETS, FLOOR BOXES, ETC. CONSTRUCTION DOCUMENTS SHALL NOT BE SCALED.
- ALL RECEPTACLES AND SWITCHES IN OFFICES CLASSROOMS, ETC. SHALL BE "DECORATIVE/DESIGNER" STYLE.
- COORDINATE LOCATION OF OUTLETS AND SWITCHES WITH THE FURNITURE AND EQUIPMENT LAYOUTS AND WITH FACILITIES REPRESENTATIVE.
- VERTICALLY ALIGN ALL LIGHT SWITCHES, STROBE DEVICES, THERMOSTATS IN ALL AREAS.
- ALL DEVICES GANGED TOGETHER SHALL BE MOUNTED UNDER A SINGLE COVER PLATE.
- ALL PANTRY RECEPTACLES SHALL BE GFI TYPE.
- PROVIDE UNFUSED DISCONNECT SWITCHES FOR ALL MECHANICAL EQUIPMENT UNLESS OTHERWISE NOTED ON CONSTRUCTION DOCUMENTS OF HVAC SCHEDULES.
- THE MINIMUM RATING OF DISCONNECT SWITCHES SHALL BE EQUAL TO OR GREATER THAN THE RATING OF THE PROTECTIVE DEVICE ON THE SUPPLY SIDE OF THE DISCONNECT SWITCH. MINIMUM DISCONNECT SWITCH SIZE IS 30 AMPERES.
- WIRING IN ALL PLENUM HUNG CEILING INSTALLED WITHOUT CONDUIT OR EMT SHALL BE TEFON JACKETED OR LISTED FOR INSTALLATION IN A PLENUM.
- ALL CONTROL WIRING ASSOCIATED WITH MECHANICAL EQUIPMENT IS THE RESPONSIBILITY OF THE MECHANICAL CONTRACTOR.
- NO LOW VOLTAGE WIRING SHALL BE PERMITTED IN SAME RACEWAY AS POWER WIRING.
- FURNISH AND INSTALL WIRING FOR EQUIPMENT FURNISHED BY OTHERS AS SHOWN ON ARCHITECTURAL, MECHANICAL, PLUMBING, AND/OR ELECTRICAL DRAWINGS. COORDINATE WITH OTHER TRADES FOR DETAILS OF INSTALLATION AND WIRING REQUIREMENTS.
- PROVIDE FIRE-STOPPING ON ALL NEW AND EXISTING PENETRATIONS THROUGH THE WALL AND FLOOR DUE TO DEMOLITION OR NEW CONSTRUCTION. THE FIRE RATING OF THE PENETRATION SEALING METHOD SHALL MATCH THE RATING OF THE WALL OR FLOOR. USE A UL LISTED SEALING METHOD WHICH IS ACCEPTABLE TO FACILITIES MANAGEMENT. FIRE-STOP IS REQUIRED ABOVE ACCESSIBLE CEILINGS, FLOORS AND ATTIC SPACE ON ALL PROTECTED OPENINGS PER 2020 NYSBC SECTION 103.1.
- BRANCH CIRCUIT HOMERUN CONDUCTORS SHALL BE INCREASED ONE SIZE TO COMPENSATE FOR VOLTAGE DROP WHEN 120V CIRCUITING EXCEEDS 200 FEET.
- UPON COMPLETION OF ALL ELECTRICAL WORK, THE ELECTRICAL CONTRACTOR SHALL ADJUST AND TEST ALL CIRCUITS, RECEPTACLES, SWITCHES, LIGHTS, MOTORS AND ANY OTHER ELECTRICAL ITEMS INSTALLED. ANY DEFECTIVE ITEMS SHALL BE IMMEDIATELY REPAIRED OR REPLACED WITH NEW AND THAT PORTION OF THE SYSTEM RETESTED. ALL SUCH REPAIR WORK SHALL BE PERFORMED AT NO ADDITIONAL COST TO THE OWNER.
- COORDINATE WITH BUILDING MANAGER FOR ANY SERVICE INTERRUPTION OF EXISTING LIGHTING AND POWER PANELS AND GIVE NOTICE FIVE DAYS PRIOR TO ANY WORK.
- FOR EXISTING VERNI BUILDING DEVICES (LIGHTING, RECEPTACLES, ETC.) SHALL REMAIN ACTIVE. IF DEVICES HAVE BEEN DISCONNECTED BY DEMOLITION, DEVICES SHALL BE RECONNECTED AND RE-ENERGIZED UTILIZING SPARE CIRCUIT BREAKERS. ALL DEVICES VISUAL SHALL BE REMOVED AND REPLACED WITH NEW DEVICES MATCHING PROJECT STANDARDS.
- CONTRACTOR SHALL LABEL CONDUIT PASSING THROUGH RATED WALLS SIMILAR TO LABELTAC (LABELTAC.COM)



Key Plan (not to scale)

9.	6/09/2021	RE-ISSUED FOR BUILDING PERMIT REVIEW
8.	6/09/2021	BID ADDENDUM 1
7.	6/01/2021	ISSUED FOR BID
6.	5/07/2021	RE-ISSUED FOR BUILDING PERMIT REVIEW
5.	2/01/2021	ISSUED FOR BUILDING PERMIT REVIEW
4.	10/14/2020	ISSUED FOR PLANNING BOARD REVIEW
3.	9/23/2020	RESUBMITTED FOR ZONING REVIEW
2.	8/28/2020	ISSUED FOR PRELIMINARY DOB REVIEW
1.	1/10/2020	ISSUED FOR DD ESTIMATE
No.	Date	Revision/Submision

STRUCTURAL & SITE CIVIL ENGINEER DOMINICK R PILLA ASSOCIATES, P.C. 145 MAIN STREET NYACK, NY 10960 945-727-7793	ROOFING CONSULTANT WATSKY ASSOCIATES 20 MADISON AVENUE VALHALLA, NY 10986 914-948-3450
---	---

MEP ENGINEER JMY CONSULTING ENGINEERING, P.C. 37 W. 58 STREET, STE 703 NEW YORK, NY 10018 212-852-9855
--

Stamp

Project Title
**IONA PREPARATORY SCHOOL
ADDITION AND ALTERATION TO THE
PAUL VERNI FINE ARTS CENTER**

Project Address
**IONA PREPARATORY SCHOOL
255 Wilmot Road
New Rochelle, NY 10804**

Drawing Title
**ELECTRICAL SYMBOLS AND
GENERAL NOTES**

Scale	Job No.	Date	Drawing No.
NTS	1618	04/03/2019	E-101

Drawn
**Peter Gisolfi Associates
Architects Landscape Architects, LLP**
566 Warburton Avenue
Hastings on Hudson, NY 10706
914 478 3677

PETER GISOLFI ASSOCIATES