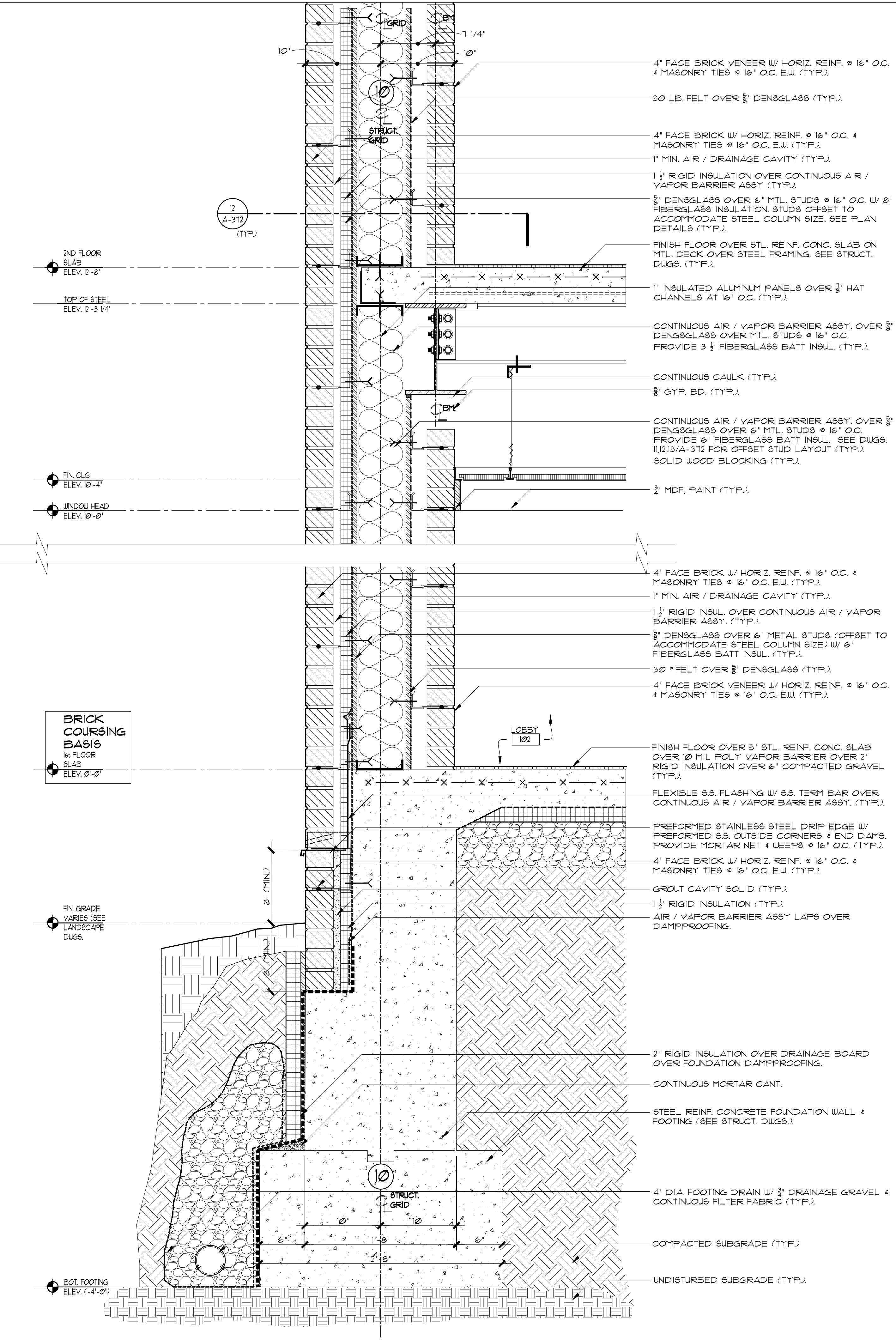


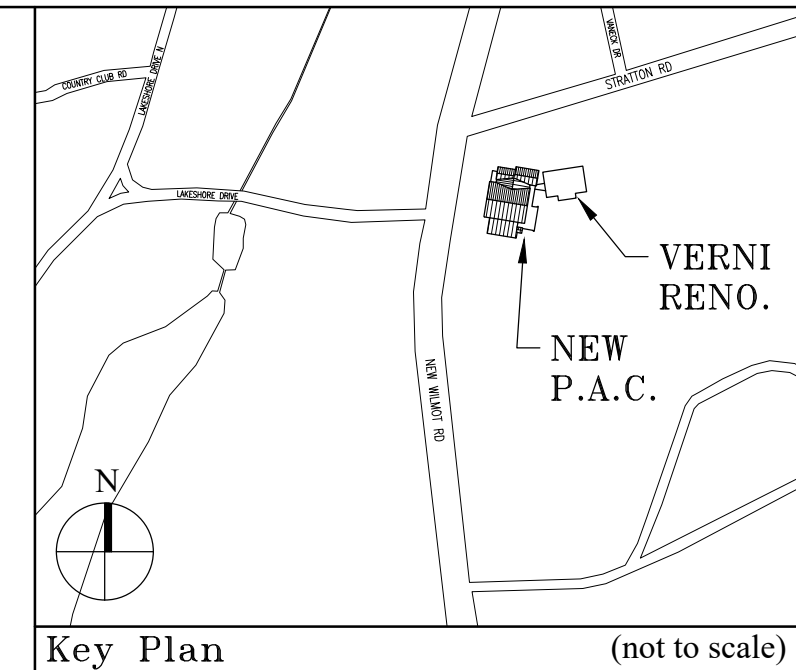
- BOND BEAM CMU. (SEE STRUCT. DWGS.)
- 1" MIN. AIR / DRAINAGE CAVITY (TYP.)
- 1 1/2" RIGID INSUL. OVER CONTINUOUS AIR / VAPOR BARRIER ASSY. (TYP.)
- 4" FACE BRICK VENEER W/ HORIZ. REINF. @ 16" O.C. 4 MASONRY TIES @ 16" O.C. E.W. (TYP.)
- 2 1/2" RIGID INSULATION SET BETWEEN 2 1/2" MTL STUDS @ 16" O.C. (TYP.)
- CONTINUOUS 8" WIDE 22 GA. STEEL BACKING PLATE FOR TERM BAR ATTACHMENT. SEE ROOF DETAILS.
- 6" BOND BEAM CMU. (SEE STRUCT. DWGS.)
- PVC MEMBRANE ROOFING OVER SLOPING ISOCYANURATE INSULATION. SEE ROOFING DETAILS
- CONTINUOUS AIR / VAPOR BARRIER ASSY. OVER 3/8" DENSGLOSS OVER 6" MTL. STUDS @ 16" O.C. PROVIDE 6" FIBERGLASS BATT INSUL. (TYP.)
- MTL. DECKING OVER STEEL FRAMING. SEE STRUCT. DWGS. (TYP.)
- MORTAR NET OVER 1 1/2" RIGID INSULATION OVER FLEXIBLE S.S. FLASHING W/ PREFORMED S.S. DRIP EDGE 4 S.S. END DAMS 4 TERM BAR
- DOUBLE HEIGHT FACE BRICK SOLDIER COURSE W/ MASONRY TIES @ 16" O.C. E.W. (TYP.)
- STEEL LINTEL W/ 1/2" STEEL CLOSURE PLATE. SEE STRUCT. DWGS.
- HUNG FINISH CEILING ASSY. SEE RCP (TYP.)
- OUTSIDE CORNER FACE BRICK (TYP.)
- INSULATED GLASS ALUMINUM STOREFRONT ASSY. W/ MANUFACTURER'S RAISED AND INSULATED BASE OVER ALUM. SUBSILL. (TYP.)
- FINISH FLOOR OVER STL. REINF. CONC. SLAB ON MTL. DECK OVER STEEL FRAMING. SEE STRUCT. DWGS. (TYP.)
- 1" INSULATED ALUMINUM PANELS OVER 3/8" HAT CHANNELS AT 16" O.C. (TYP.)
- CONTINUOUS AIR / VAPOR BARRIER ASSY. OVER 3/8" DENSGLOSS OVER 3 3/8" MTL. STUDS @ 16" O.C. PROVIDE 3 1/2" FIBERGLASS BATT INSUL. (TYP.)
- CONTINUOUS CAULK (TYP.)
- 3/8" GYP. BD. (TYP.)
- CONTINUOUS AIR / VAPOR BARRIER ASSY. OVER 3/8" DENSGLOSS OVER 6" MTL. STUDS @ 16" O.C. PROVIDE 6" FIBERGLASS BATT INSUL. SEE DWGS. 11/2,13/A-312 FOR OFFSET STUD LAYOUT (TYP.)
- SOLID WOOD BLOCKING (TYP.)
- 3/4" MDF. PAINT (TYP.)
- CONTINUOUS PREFORMED S.S. DRIP EDGE (TYP.)
- SEE LANDSCAPE DWGS. FOR PAVING DETAIL.
- FINISH FLOOR OVER 5" STL. REINF. CONC. SLAB OVER 10 MIL POLY VAPOR BARRIER OVER 2" RIGID INSULATION OVER 6" COMPACTED GRAVEL (TYP.)
- 2" RIGID INSULATION OVER DRAINAGE BOARD OVER FOUNDATION DAMPPROOFING.
- CONTINUOUS MORTAR CANT.
- STEEL REINF. CONCRETE FOUNDATION WALL 4 FOOTING (SEE STRUCT. DWGS.)
- 4" DIA. FOOTING DRAIN W/ 3/4" DRAINAGE GRAVEL 4 CONTINUOUS FILTER FABRIC (TYP.)
- COMPACTED SUBGRADE (TYP.)
- UNDISTURBED SUBGRADE (TYP.)

1 EXTERIOR WALL SECTION  
SCALE: 1/2"=1'-0"



- 4" FACE BRICK VENEER W/ HORIZ. REINF. @ 16" O.C. 4 MASONRY TIES @ 16" O.C. E.W. (TYP.)
- 30 LB. FELT OVER 3/8" DENSGLOSS (TYP.)
- 4" FACE BRICK W/ HORIZ. REINF. @ 16" O.C. 4 MASONRY TIES @ 16" O.C. E.W. (TYP.)
- 1" MIN. AIR / DRAINAGE CAVITY (TYP.)
- 1 1/2" RIGID INSULATION OVER CONTINUOUS AIR / VAPOR BARRIER ASSY. (TYP.)
- 3/8" DENSGLOSS OVER 6" MTL. STUDS @ 16" O.C. W/ 6" FIBERGLASS INSULATION STUDS OFFSET TO ACCOMMODATE STEEL COLUMN SIZE. SEE PLAN DETAILS (TYP.)
- FINISH FLOOR OVER STL. REINF. CONC. SLAB ON MTL. DECK OVER STEEL FRAMING. SEE STRUCT. DWGS. (TYP.)
- 1" INSULATED ALUMINUM PANELS OVER 3/8" HAT CHANNELS AT 16" O.C. (TYP.)
- CONTINUOUS AIR / VAPOR BARRIER ASSY. OVER 3/8" DENSGLOSS OVER 6" MTL. STUDS @ 16" O.C. PROVIDE 6" FIBERGLASS BATT INSUL. (TYP.)
- CONTINUOUS CAULK (TYP.)
- 3/8" GYP. BD. (TYP.)
- CONTINUOUS AIR / VAPOR BARRIER ASSY. OVER 3/8" DENSGLOSS OVER 6" MTL. STUDS @ 16" O.C. PROVIDE 6" FIBERGLASS BATT INSUL. SEE DWGS. 11/2,13/A-312 FOR OFFSET STUD LAYOUT (TYP.)
- SOLID WOOD BLOCKING (TYP.)
- 3/4" MDF. PAINT (TYP.)
- 4" FACE BRICK W/ HORIZ. REINF. @ 16" O.C. 4 MASONRY TIES @ 16" O.C. E.W. (TYP.)
- 1" MIN. AIR / DRAINAGE CAVITY (TYP.)
- 1 1/2" RIGID INSUL. OVER CONTINUOUS AIR / VAPOR BARRIER ASSY. (TYP.)
- 3/8" DENSGLOSS OVER 6" METAL STUDS (OFFSET TO ACCOMMODATE STEEL COLUMN SIZE) W/ 6" FIBERGLASS BATT INSUL. (TYP.)
- 30 \* FELT OVER 3/8" DENSGLOSS (TYP.)
- 4" FACE BRICK VENEER W/ HORIZ. REINF. @ 16" O.C. 4 MASONRY TIES @ 16" O.C. E.W. (TYP.)
- FINISH FLOOR OVER 5" STL. REINF. CONC. SLAB OVER 10 MIL POLY VAPOR BARRIER OVER 2" RIGID INSULATION OVER 6" COMPACTED GRAVEL (TYP.)
- FLEXIBLE S.S. FLASHING W/ S.S. TERM BAR OVER CONTINUOUS AIR / VAPOR BARRIER ASSY. (TYP.)
- PREFORMED STAINLESS STEEL DRIP EDGE W/ PREFORMED S.S. OUTSIDE CORNERS 4 END DAMS. PROVIDE MORTAR NET 4 WEEPS @ 16" O.C. (TYP.)
- 4" FACE BRICK W/ HORIZ. REINF. @ 16" O.C. 4 MASONRY TIES @ 16" O.C. E.W. (TYP.)
- GROUT CAVITY SOLID (TYP.)
- 1 1/2" RIGID INSULATION (TYP.)
- AIR / VAPOR BARRIER ASSY LAPS OVER DAMPPROOFING.
- 2" RIGID INSULATION OVER DRAINAGE BOARD OVER FOUNDATION DAMPPROOFING.
- CONTINUOUS MORTAR CANT.
- STEEL REINF. CONCRETE FOUNDATION WALL 4 FOOTING (SEE STRUCT. DWGS.)
- 4" DIA. FOOTING DRAIN W/ 3/4" DRAINAGE GRAVEL 4 CONTINUOUS FILTER FABRIC (TYP.)
- COMPACTED SUBGRADE (TYP.)
- UNDISTURBED SUBGRADE (TYP.)

2 EXTERIOR WALL SECTION  
SCALE: 1/2"=1'-0"



Key Plan (not to scale)

No.	Date	Revision/Submission
7.	6/01/2021	ISSUED FOR BID
6.	5/07/2021	RE-ISSUED FOR BUILDING PERMIT REVIEW
5.	2/01/2021	ISSUED FOR BUILDING PERMIT REVIEW
4.	10/14/2020	ISSUED FOR PLANNING BOARD REVIEW
3.	9/23/2020	RESUBMITTED FOR ZONING REVIEW
2.	8/28/2020	ISSUED FOR PRELIMINARY DOB REVIEW
1.	1/10/2020	ISSUED FOR DD ESTIMATE

STRUCTURAL & SITE CIVIL ENGINEER  
DOMINICK R PILLA ASSOCIATES, P.C.  
143 MAIN STREET  
NYACK, NY 10960  
845-727-7793

MEP ENGINEER  
JMV CONSULTING ENGINEERING, P.C.  
37 W. 39 STREET, STE 703  
NEW YORK, NY 10018  
212-852-9855

ROOFING CONSULTANT  
WATSKY ASSOCIATES  
20 MADISON AVENUE  
VALHALLA, NY 10595  
914-848-3450

Stamp

Project Title  
IONA PREPARATORY SCHOOL  
ADDITION AND ALTERATION TO THE  
PAUL VERNI FINE ARTS CENTER

Project Address  
IONA PREPARATORY SCHOOL  
255 Wilmot Road  
New Rochelle, NY 10804

Drawing Title  
EXTERIOR WALL SECTIONS

Scale	Job No.	Date	Drawing No.
	1618	04/03/2019	A-350

Drawn

Peter Gisolfi Associates  
Architects Landscape Architects, LLP  
586 Warburton Avenue  
Hastings on Hudson, NY 10706  
914 478 3677

PETER GISOLFI ASSOCIATES