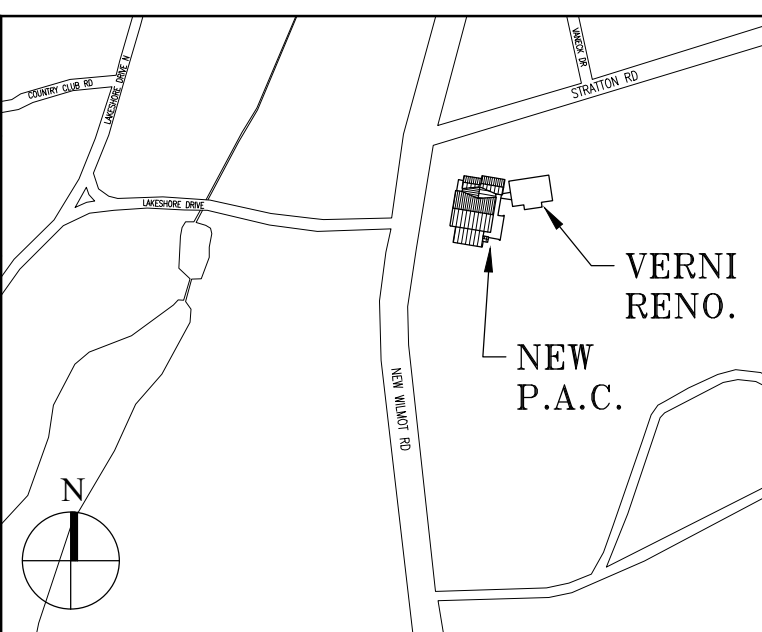


WINDOW / STOREFRONT SCHEDULE

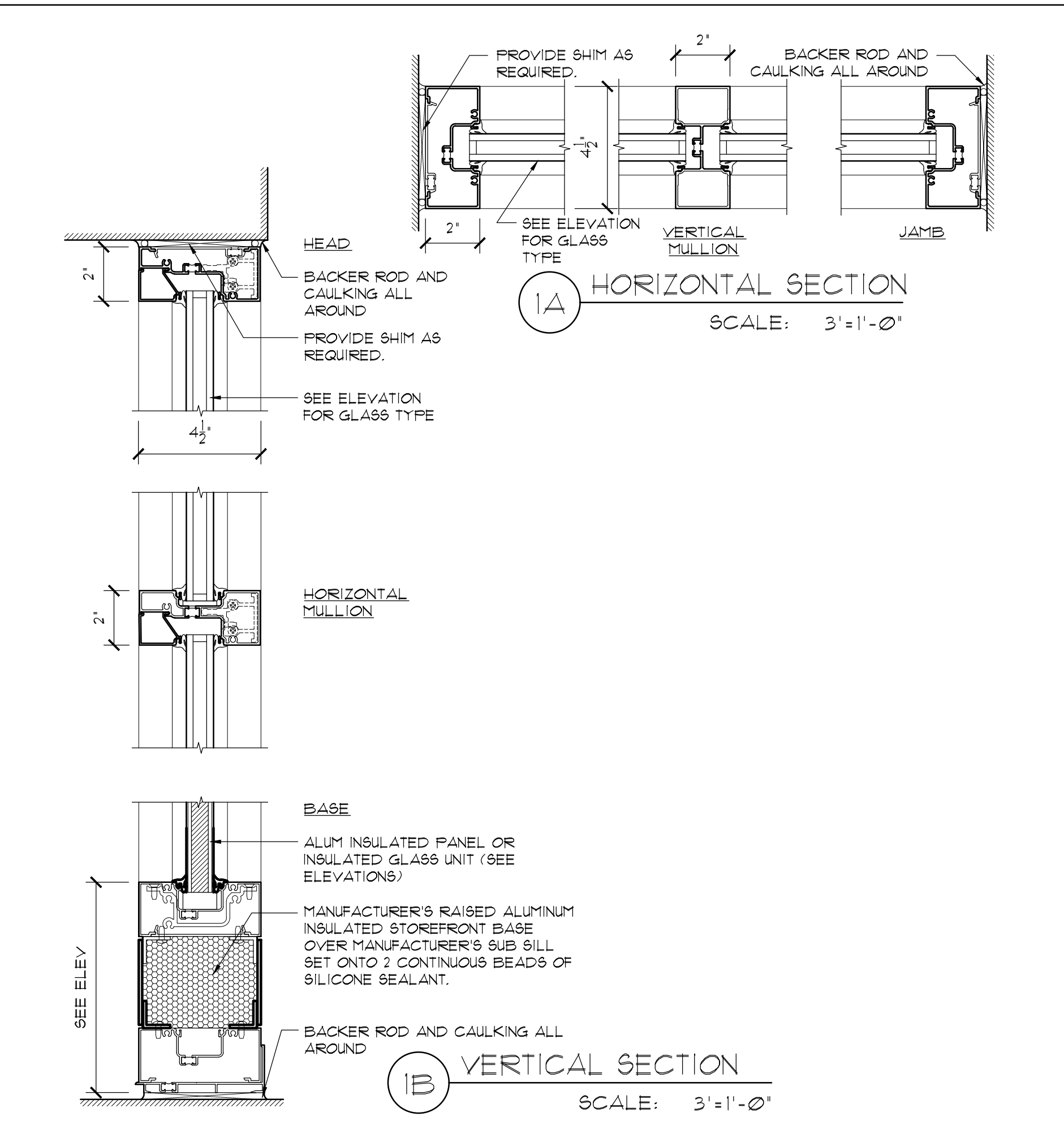
WIN#	EXPOSURE	DWG# / LOCATION	FLOOR	INT / EXT	DESCRIPTION	DETAILS	SIZE (WxH)	GLAZING (SEE SPEC)	MAXIMUM ASSEMBLY U-FACTOR	MAXIMUM ASSEMBLY SHGC	SCREEN	REMARKS
A	EAST	A-200	2nd	EXT.	ALUM. STOREFRONT	KAUENEER VG TRIFAB 45IT	8'-0" x 8'-8"	GL-3T	0.38	0.36	NO	
B	EAST, NORTH, SOUTH	A-200, A-201	2nd	EXT.	ALUM. STOREFRONT	KAUENEER VG TRIFAB 45IT	11'-0" x 8'-8"	GL-3T	0.38	0.36	NO	
C	EAST	A-200	2nd	EXT.	ALUM. STOREFRONT	KAUENEER VG TRIFAB 45IT	7'-0" x 8'-8"	GL-3T	0.38	0.36	NO	
D	NORTH	A-201	2nd	EXT.	ALUM. STOREFRONT	KAUENEER VG TRIFAB 45IT	7'-10" x 8'-8"	GL-3T	0.38	0.36	NO	
E	NORTH	A-201	2nd	EXT.	ALUM. WINDOW W/ PROJECT OUT UNITS	KAUENEER VG TRIFAB 45IT WITH OPERABLE GLASSVENT	6'-4" x 6'-0"	GL-3T	0.38 0.45	0.36	NO	* OPERABLE PORTION
F	EAST	A-200	1st	EXT.	ALUM. STOREFRONT	KAUENEER VG TRIFAB 45IT	8'-0" x 10'-0"	GL-3T	0.38	0.36	NO	
G	EAST	A-200	1st	EXT.	ALUM. STOREFRONT	KAUENEER VG TRIFAB 45IT	11'-0" x 10'-0"	GL-3T	0.38	0.36	NO	
GI	-	A-403	1st	INT.	ALUM. STOREFRONT	KAUENEER VG TRIFAB 45IT	11'-0" x 10'-0"	GL-4	N/A	N/A	NO	
H	EAST	A-200	1st	INT.	ALUM. STOREFRONT W/ HINGED DOOR ASSEMBLY	KAUENEER VG TRIFAB 45IT 500 STANDARD ENTRANCE	7'-0" x 10'-0"	GL-4	N/A	N/A	NO	SEE DOOR SCHEDULE AND SPEC FOR HARDWARE SET
J	WEST	A-200	1st	EXT.	ALUM. STOREFRONT W/ HINGED DOOR ASSEMBLY	KAUENEER VG TRIFAB 45IT 500 STANDARD ENTRANCE	7'-10" x 10'-0"	GL-3T	0.38	0.36	NO	** DOOR PORTION. SEE DOOR SCHEDULE AND SPEC FOR HARDWARE SET
K	NORTH, SOUTH	A-201	1st	EXT.	ALUM. WINDOW W/ PROJECT OUT UNITS	KAUENEER VG TRIFAB 45IT WITH OPERABLE GLASSVENT	6'-4" x 7'-4"	GL-3T	0.38 0.45	0.36	NO	* OPERABLE PORTION
KI	SOUTH	A-201	1st	EXT.	ALUM. WINDOW W/ PROJECT OUT UNITS	KAUENEER VG TRIFAB 45IT WITH OPERABLE GLASSVENT	6'-4" x 7'-4"	GL-3T	0.38 0.45	0.36	NO	* OPERABLE PORTION. SAME AS K EXCEPT WITH FROSTED GLASS
L	EAST	A-200	1st	EXT.	ALUM. STOREFRONT W/ HINGED DOOR ASSEMBLY	KAUENEER VG TRIFAB 45IT 500 STANDARD ENTRANCE	8'-0" x 10'-0"	GL-3T	0.38 0.45	0.36	NO	SEE DOOR SCHEDULE AND SPEC FOR HARDWARE SET
M	WEST	A-200	1st	EXT.	ALUM. STOREFRONT	KAUENEER VG TRIFAB 45IT	6'-0" x 10'-0"	GL-3T	0.38	0.36	NO	
N	NORTH	A-201	1st	EXT.	ALUM. STOREFRONT W/ HINGED DOOR ASSEMBLY	KAUENEER VG TRIFAB 45IT 500 STANDARD ENTRANCE	6'-4" x 10'-0"	GL-3T	0.38 0.45	0.36	NO	** DOOR PORTION. SEE DOOR SCHEDULE AND SPEC FOR HARDWARE SET
P	NORTH	A-201	1st	EXT.	ALUM. STOREFRONT W/ HINGED DOOR ASSEMBLY	KAUENEER VG TRIFAB 45IT 500 STANDARD ENTRANCE	7'-6" x 8'-0"	GL-3T	0.38 0.45	0.36	NO	** DOOR PORTION. SEE DOOR SCHEDULE AND SPEC FOR HARDWARE SET
Q	EAST	A-402	1st	INT.	ALUM. STOREFRONT W/ HINGED DOOR ASSEMBLY	KAUENEER VG TRIFAB 45IT 500 STANDARD ENTRANCE	11'-0" x 10'-0"	GL-4	N/A	N/A	NO	** DOOR PORTION. SEE DOOR SCHEDULE AND SPEC FOR HARDWARE SET
R	SOUTH	A-202	1st	EXT.	ALUM. STOREFRONT W/ HINGED DOOR ASSEMBLY	KAUENEER VG TRIFAB 45IT 500 STANDARD ENTRANCE	23'-1" x 10'-0"	GL-3T	0.38 0.45	0.36	NO	** DOOR PORTION. SEE DOOR SCHEDULE AND SPEC FOR HARDWARE SET. GC TO HOLD / VIF OVERALL WIDTH
S	NORTH	A-202	1st	EXT.	ALUM. STOREFRONT W/ HINGED DOOR ASSEMBLY	KAUENEER VG TRIFAB 45IT 500 STANDARD ENTRANCE	16'-5" x 10'-0"	GL-3T	0.38 0.45	0.36	NO	** DOOR PORTION. SEE DOOR SCHEDULE AND SPEC FOR HARDWARE SET. GC TO HOLD / VIF OVERALL WIDTH
T	EAST - VERNI	A-202	1st	EXT.	ALUM. WINDOW	KAUENEER VG TRIFAB 45IT	3'-1 1/2" x 3'-1 1/2"	GL-3T	0.38	0.36	NO	GC TO HOLD / VIF OVERALL WIDTH



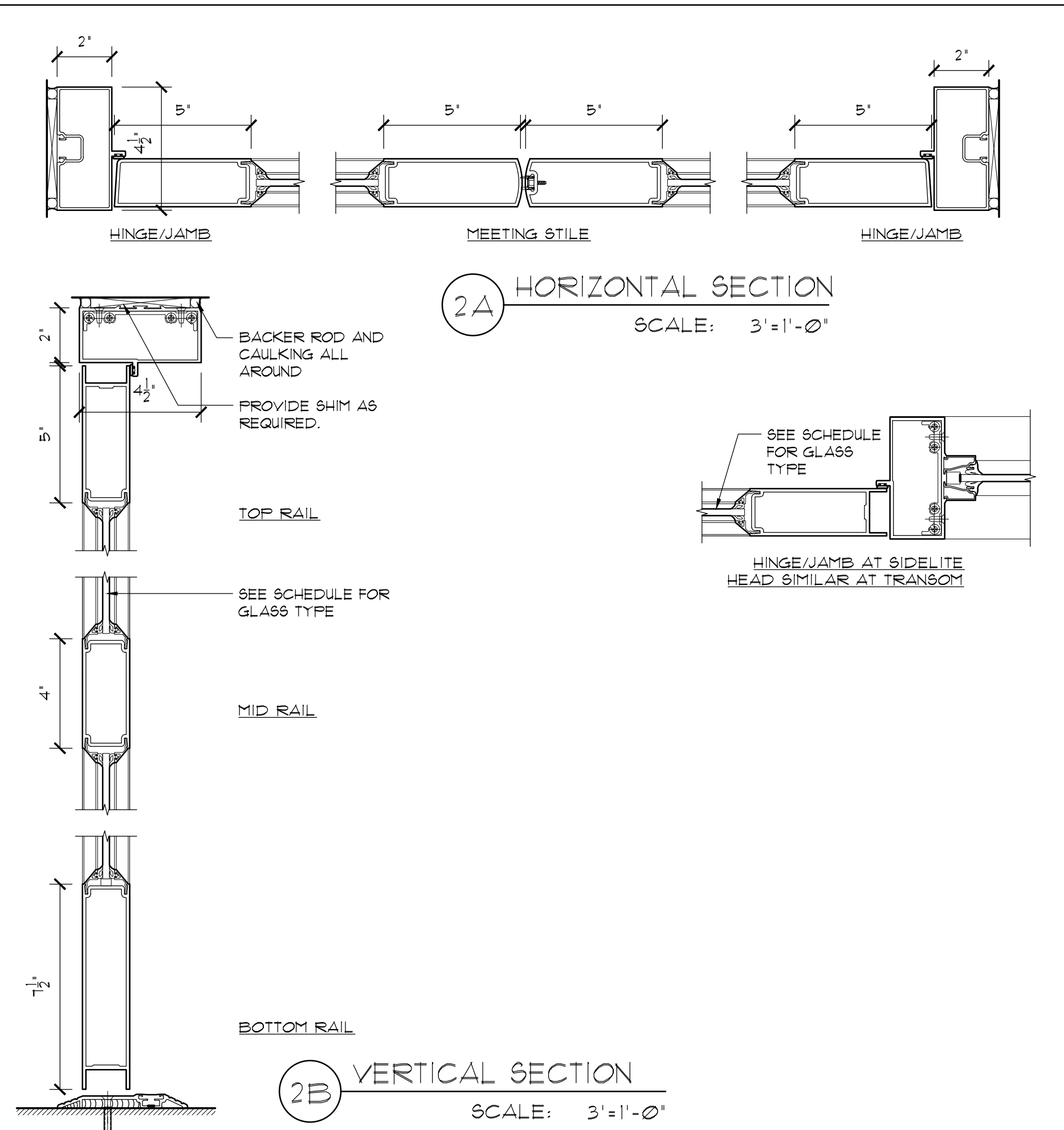
Key Plan (not to scale)

GL-3T: 1" INSULATED GLASS UNIT TEMPER, SOLARBAN 60 (2) CLEAR + CLEAR, 1/2" AIR SPACE AND (2) 1/4" LITES, WINTER ARGON

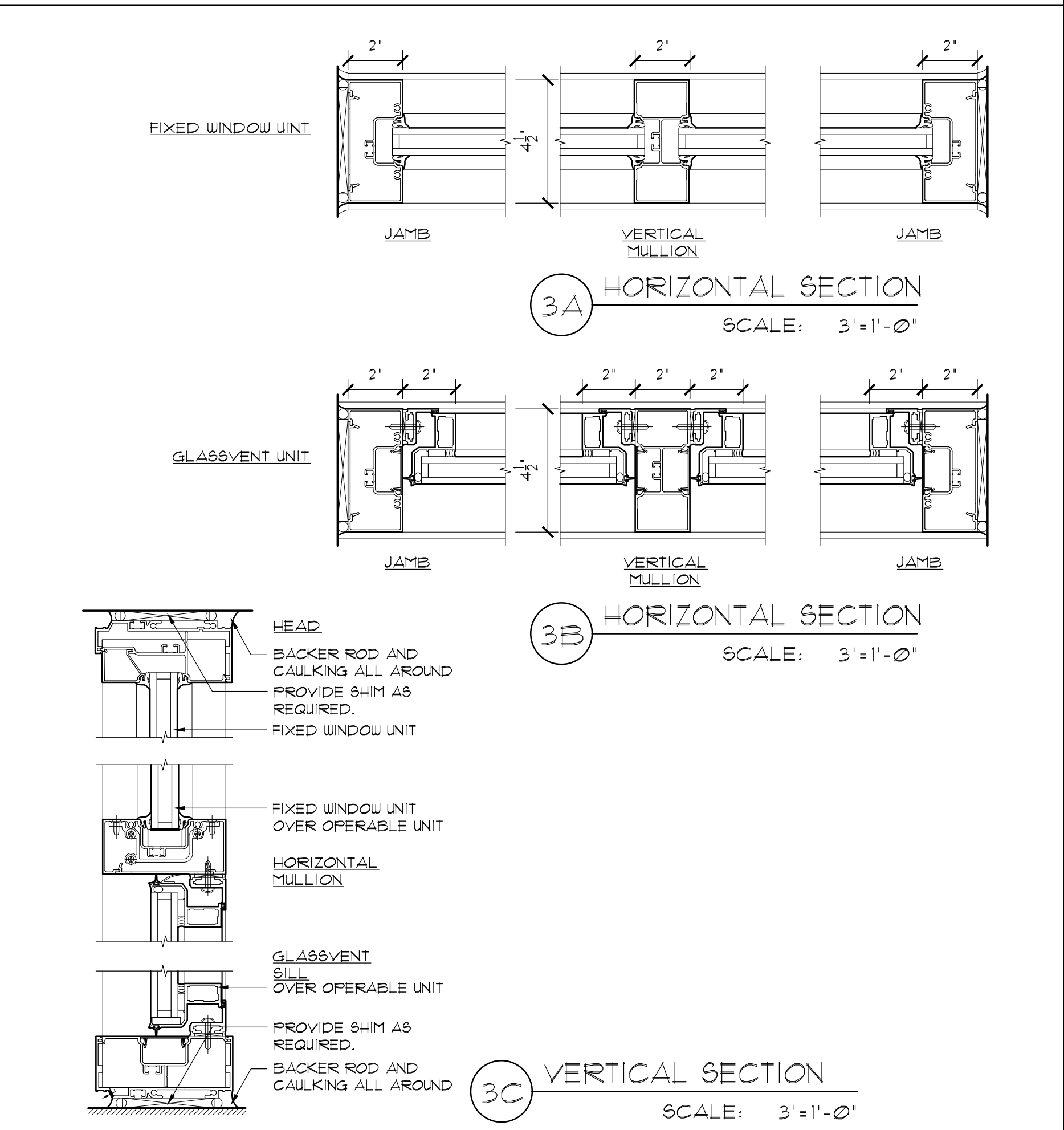
TYPICAL STOREFRONT DETAILS - KAUENEER TRIFAB VERSAGLAZED 45IT FRAMING SYSTEM 3'-1'-0"



TYPICAL DOOR DETAILS (KAUENEER 500 STANDARD ENTRANCE) 3'-1'-0"



TYPICAL WINDOW DETAILS - KAUENEER VG 45IT FRAMING SYSTEM WITH GLASSVENT 3'-1'-0"



No.	Date	Revision/Submission
7.	6/01/2021	ISSUED FOR BID
6.	5/07/2021	RE-ISSUED FOR BUILDING PERMIT REVIEW
5.	2/01/2021	ISSUED FOR BUILDING PERMIT REVIEW
4.	10/14/2020	ISSUED FOR PLANNING BOARD REVIEW
3.	9/23/2020	RESUBMITTED FOR ZONING REVIEW
2.	8/28/2020	ISSUED FOR PRELIMINARY DOB REVIEW
1.	1/10/2020	ISSUED FOR DD ESTIMATE

Stamp

STRUCTURAL & SITE CIVIL ENGINEER
DOMINICK R PILLA
ASSOCIATES, P.C.
143 MAIN STREET
NYACK, NY 10960
845-727-7793

MEP ENGINEER
JMV CONSULTING
ENGINEERING, P.C.
37 W. 39 STREET, STE 703
NEW YORK, NY 10018
212-852-9855

ROOFING CONSULTANT
WATSKY ASSOCIATES
20 MADISON AVENUE
VALHALLA, NY 10595
914-948-3450

Project Title
IONA PREPARATORY SCHOOL
ADDITION AND ALTERATION TO THE
PAUL VERNI FINE ARTS CENTER

Project Address
IONA PREPARATORY SCHOOL
255 Wilmot Road
New Rochelle, NY 10804

Drawing Title
WINDOW AND STOREFRONT
SCHEDULE

Scale	Job No.	Date	Drawing No.
AS NOTED	1618	04/03/2019	A-910

Drawn

Peter Gisolfi Associates
Architects Landscape Architects, LLP
586 Warburton Avenue
Hastings on Hudson, NY 10706
914 478 3677

PETER GISOLFI ASSOCIATES