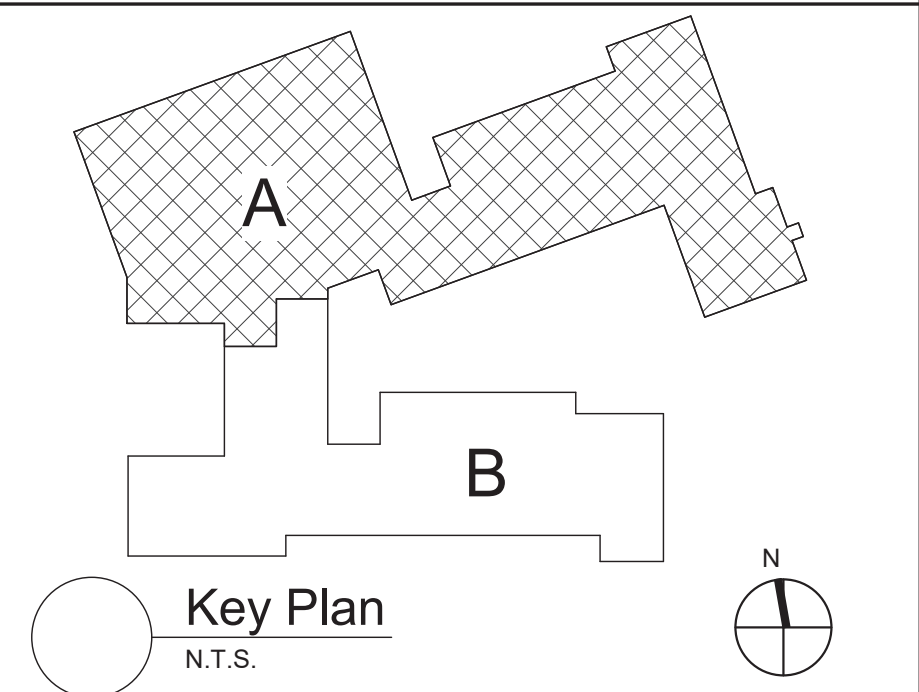


1 First Floor Key Plan
1/16" = 1'-0"

General Notes

- A. VERIFY ALL PIPING LOCATIONS, SIZES, AND ARRANGEMENTS IN FIELD PRIOR TO BID. NOTIFY ARCHITECT IN WRITING OF ANY DISCREPANCIES.
- B. VERIFY IN FIELD INVERT AND DIRECTION OF FLOW IN EXISTING SOIL PIPE WHERE NEW SOIL PIPE IS TO BE CONNECTED TO EXISTING SOIL PIPE.
- C. LEGALLY DISPOSE OF ALL DEMOLITION DEBRIS.
- D. INCLUDE TRENCHING, CUTTING AND PATCHING OF FLOORS, WALLS AND CEILINGS, INCLUDING CEILING TILE REMOVAL AND REPLACEMENT, WHEN REQUIRED FOR PLUMBING WORK. PATCH ABANDONED OPENINGS AND DISTURBED FINISHES TO MATCH EXISTING. TAKE PRECAUTIONS TO PROTECT STRUCTURAL INTEGRITY OF FLOOR OR WALLS WHEN TRENCHING OR CUTTING.
- E. MATERIALS FOR PLUMBING INSTALLATION SHALL BE NEW, UNLESS SPECIFICALLY NOTED OTHERWISE.
- F. PROVIDE THROUGH PENETRATION FIRESTOPPING FOR FIRE RATED WALLS AND FLOORS. PENETRATIONS THROUGH EXISTING WALLS AND FLOORS ARE CONSIDERED TWO-HOUR PARTITIONS UNLESS SPECIFICALLY NOTED OTHERWISE. REFER TO "A" SERIES OR CODE COMPLIANCE DRAWINGS FOR LOCATION OF FIRE RATED WALLS AND FLOORS.



S.E.D. Control No. 48-01-01-06-0-003-008

| Rev. No.: | Date: | Description: |
|-----------|-------|--------------|
| | | |
| | | |
| | | |
| | | |
| | | |



complex world | CLEAR SOLUTIONS

Tetra Tech Engineers, Architects & Landscape Architects, P.C.

BID SET

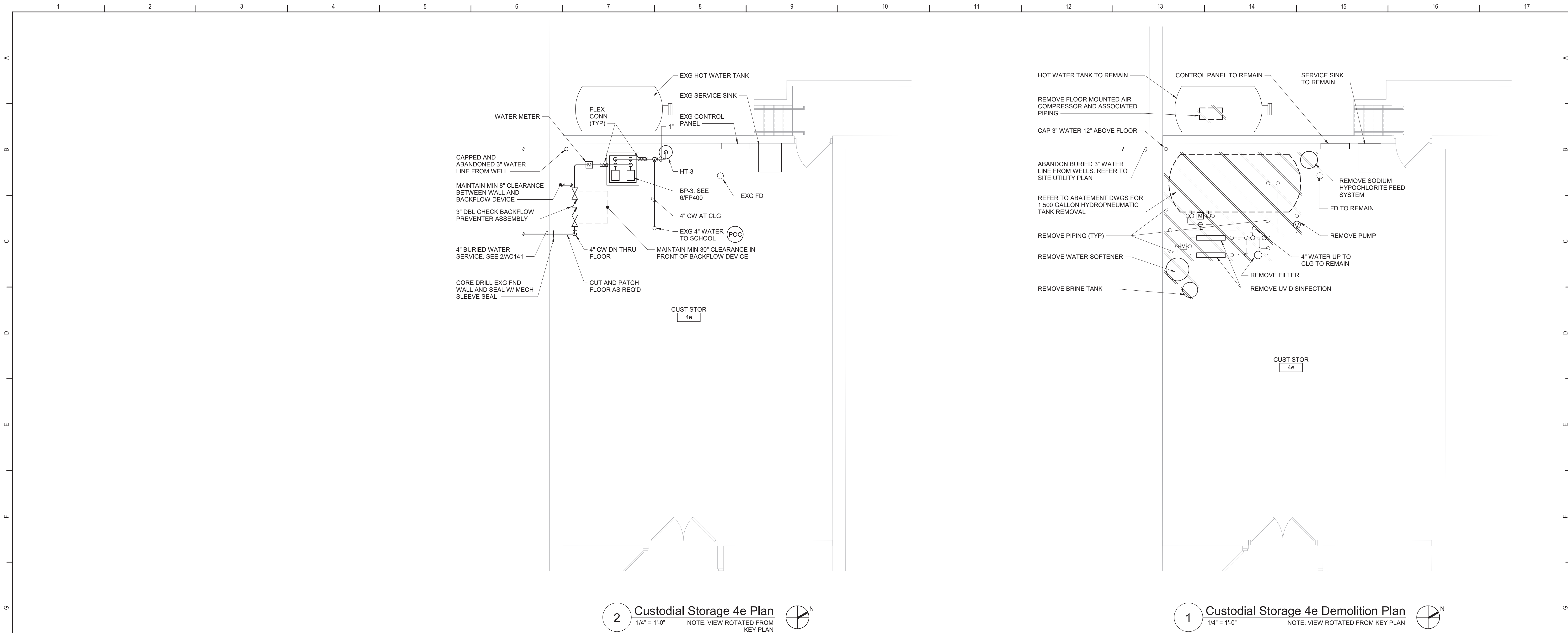


Mahopac Central School District
Mahopac, NY

Reconstruction To:
Mahopac Falls Elementary

First Floor Key Plan

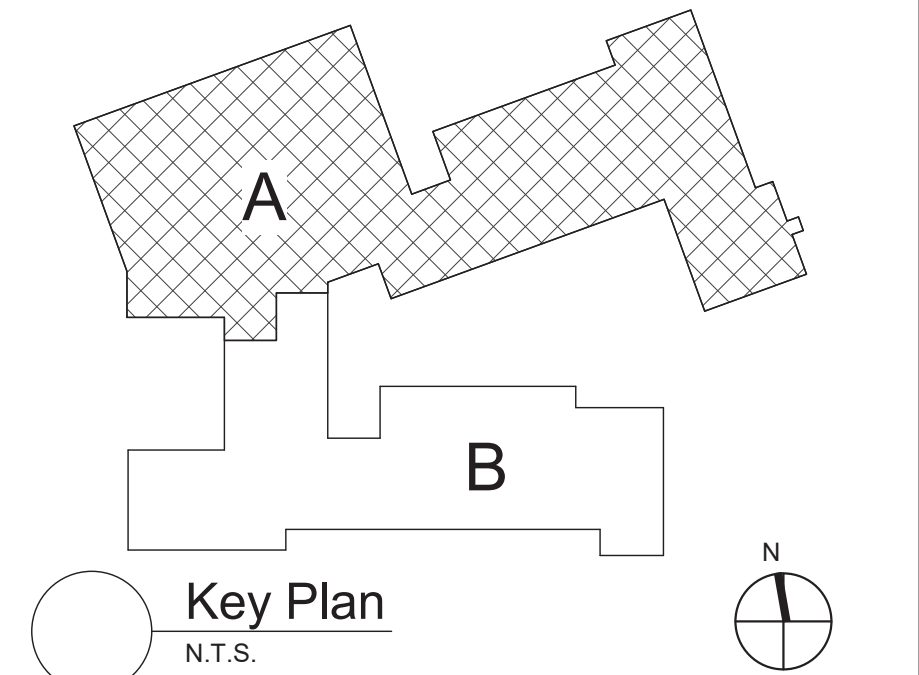
| | | |
|------------------------------|-------------------|---------------------------------|
| Drawn By: DCG/ sef | Date: 08/21/20 | Drawing Number: FP050 |
| Project No.: 121111-19002 | | |



- Plan Notes**
- A. REFER TO DRAWING NO. P050 FOR GENERAL NOTES.
- B. REMOVE PLUMBING EQUIPMENT INDICATED, INCLUDING ASSOCIATED PIPING, FASTENERS, SUPPORTS, ETC., BACK TO POINTS OF CONCEALMENT WITHIN OR BEHIND REMAINING WALLS, BELOW FLOORS OR ABOVE CEILINGS.
- C. REMOVE ABANDONED ACCESSIBLE PIPING TO MAIN BRANCHES, STACKS OR RISERS AS REQUIRED TO ELIMINATE EXPOSED PIPING AND DEAD END PIPING RUNS LONGER THAN 1'-0". COORDINATE CONCEALMENT OF PIPING WITH FINAL CONSTRUCTION OF WALLS, FLOORS AND CEILINGS.

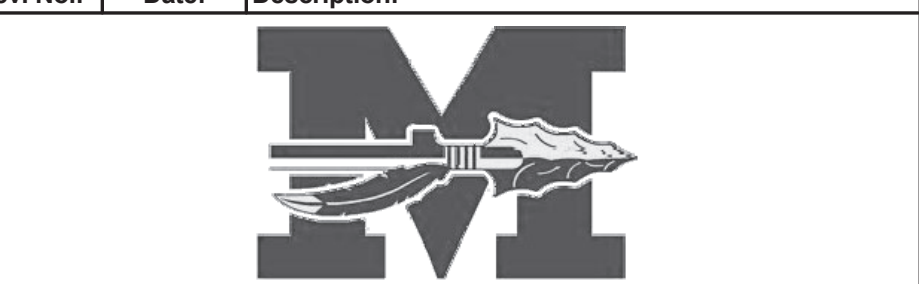
| Domestic Water Booster Pump Schedule | | | | | | | | | | | | | |
|---|----------------------|------------------------------------|----------------|--------------------|-------------------------|---------------------|------|-------------|----------------|---------|-------|-------|-------|
| DWG LABEL | LOCATION | DESIGN MAKE AND MODEL | TOTAL CAPACITY | TOTAL DYNAMIC HEAD | MAX CONT OPERATING TEMP | INLET / OUTLET SIZE | RPM | HORSE POWER | FULL LOAD AMPS | VOLTAGE | PHASE | HERTZ | NOTES |
| | | | GPM | FEET | "F | NPS | | | | | | | |
| BP-3 | CUSTODIAL STORAGE 4e | GRUNDFOS HYDRO MULTI-B/E 2 CME10-1 | 75 | 46.2 | 104 | 2.5 | 3450 | 1.5 | 13.1 | 208 | 1 | 60 | 1, 2 |
| NOTES: | | | | | | | | | | | | | |
| 1. PACKAGED DUPLEX BOOSTER PUMP SYSTEM WITH VARIABLE FREQUENCY DRIVES AND DUPLEX CONTROL PANEL MOUNTED ON A SKID. | | | | | | | | | | | | | |
| 2. EACH PUMP SIZED FOR 75% OF TOTAL SYSTEM CAPACITY. | | | | | | | | | | | | | |

| Hydropneumatic Tank Schedule | | | | | | | | | | |
|--|----------------------|---------------------------|----------------------------------|-------------------------------------|------------------------------|----------------------------------|-------------------|-----------------|------------------|-------|
| DRAWING LABEL | LOCATION | MAKE AND MODEL NUMBER | TOTAL STORAGE CAPACITY (GALLONS) | MAXIMUM ACCEPTANCE VOLUME - GALLONS | WATER SERVICE PRESSURE (PSI) | MAXIMUM ALLOWABLE PRESSURE (PSI) | DIAMETER (INCHES) | HEIGHT (INCHES) | CONNECTION (NPT) | NOTES |
| HT-3 | CUSTODIAL STORAGE 4e | JOHN WOOD NO. JAPR 20-602 | 15 | 39.7 | 60 | 150 | 12 | 33 1/2 | 1 | 1, 2 |
| NOTES: | | | | | | | | | | |
| 1. REPLACEABLE BUTYL BLADDER (FDA APPROVED). | | | | | | | | | | |
| 2. ASME CONSTRUCTION. | | | | | | | | | | |



S.E.D. Control No. 48-01-01-06-0-003-008

| Rev. No.: | Date: | Description: |
|-----------|-------|--------------|
| | | |
| | | |
| | | |
| | | |
| | | |



complex world | CLEAR SOLUTIONS

Tetra Tech Engineers, Architects & Landscape Architects, P.C.

BID SET

TETRA TECH
ARCHITECTS & ENGINEERS

Mahopac Central School District
Mahopac, NY

Reconstruction To:
Mahopac Falls Elementary

Enlarged Plans, Details and Schedule

| | | |
|-----------------------|-------------------|-----------------|
| Drawn By: DCG/ sef | Date: 08/21/20 | Drawing Number: |
| Project No.: | 121111-19002 | FP400 |

