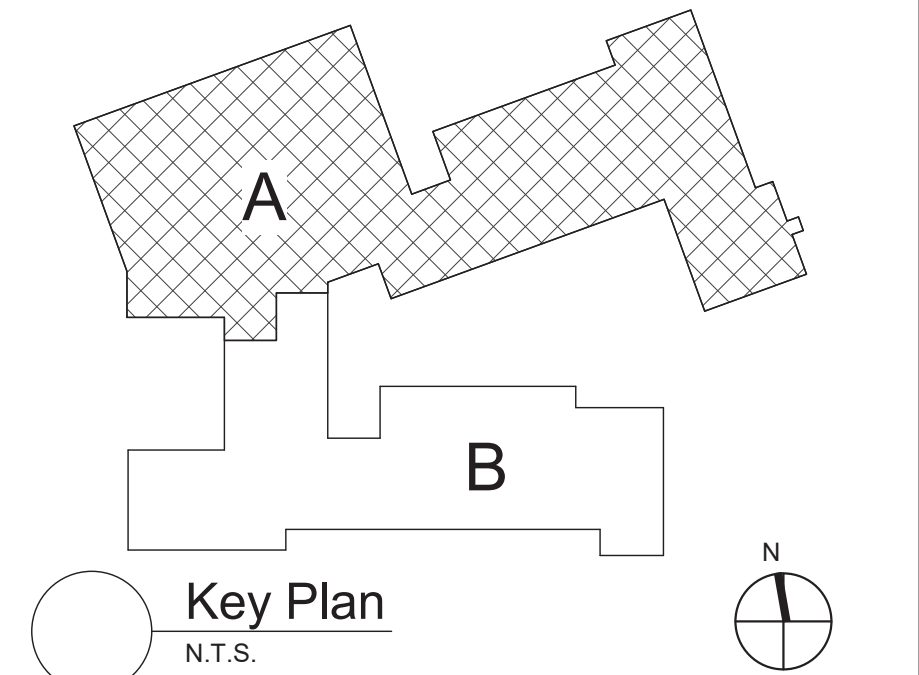


- Plan Notes**
- A. REFER TO DRAWING NO. P050 FOR GENERAL NOTES.
- B. REMOVE PLUMBING EQUIPMENT INDICATED, INCLUDING ASSOCIATED PIPING, FASTENERS, SUPPORTS, ETC., BACK TO POINTS OF CONCEALMENT WITHIN OR BEHIND REMAINING WALLS, BELOW FLOORS OR ABOVE CEILINGS.
- C. REMOVE ABANDONED ACCESSIBLE PIPING TO MAIN BRANCHES, STACKS OR RISERS AS REQUIRED TO ELIMINATE EXPOSED PIPING AND DEAD END PIPING RUNS LONGER THAN 1'-0". COORDINATE CONCEALMENT OF PIPING WITH FINAL CONSTRUCTION OF WALLS, FLOORS AND CEILINGS.

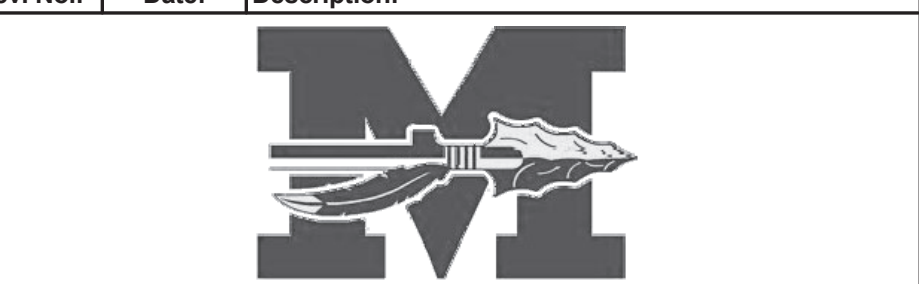
Domestic Water Booster Pump Schedule													
DWG LABEL	LOCATION	DESIGN MAKE AND MODEL	TOTAL CAPACITY	TOTAL DYNAMIC HEAD	MAX CONT OPERATING TEMP	INLET / OUTLET SIZE	RPM	HORSE POWER	FULL LOAD AMPS	VOLTAGE	PHASE	HERTZ	NOTES
			GPM	FEET	"F	NPS							
BP-3	CUSTODIAL STORAGE 4e	GRUNDFOS HYDRO MULTI-B/E 2 CME10-1	75	46.2	104	2.5	3450	1.5	13.1	208	1	60	1, 2
NOTES:													
1. PACKAGED DUPLEX BOOSTER PUMP SYSTEM WITH VARIABLE FREQUENCY DRIVES AND DUPLEX CONTROL PANEL MOUNTED ON A SKID.													
2. EACH PUMP SIZED FOR 75% OF TOTAL SYSTEM CAPACITY.													

Hydropneumatic Tank Schedule										
DRAWING LABEL	LOCATION	MAKE AND MODEL NUMBER	TOTAL STORAGE CAPACITY (GALLONS)	MAXIMUM ACCEPTANCE VOLUME - GALLONS	WATER SERVICE PRESSURE (PSI)	MAXIMUM ALLOWABLE PRESSURE (PSI)	DIAMETER (INCHES)	HEIGHT (INCHES)	CONNECTION (NPT)	NOTES
HT-3	CUSTODIAL STORAGE 4e	JOHN WOOD NO. JAPR 20-602	15	39.7	60	150	12	33 1/2	1	1, 2
NOTES:										
1. REPLACEABLE BUTYL BLADDER (FDA APPROVED).										
2. ASME CONSTRUCTION.										



S.E.D. Control No. 48-01-01-06-0-003-008

Rev. No.:	Date:	Description:



complex world | CLEAR SOLUTIONS

Tetra Tech Engineers, Architects & Landscape Architects, P.C.

BID SET

TETRA TECH
ARCHITECTS & ENGINEERS

Mahopac Central School District
Mahopac, NY

Reconstruction To:
Mahopac Falls Elementary

Enlarged Plans, Details and Schedule

Drawn By: DCG/ sef	Date: 08/21/20	Drawing Number:
Project No.:	121111-19002	FP400

