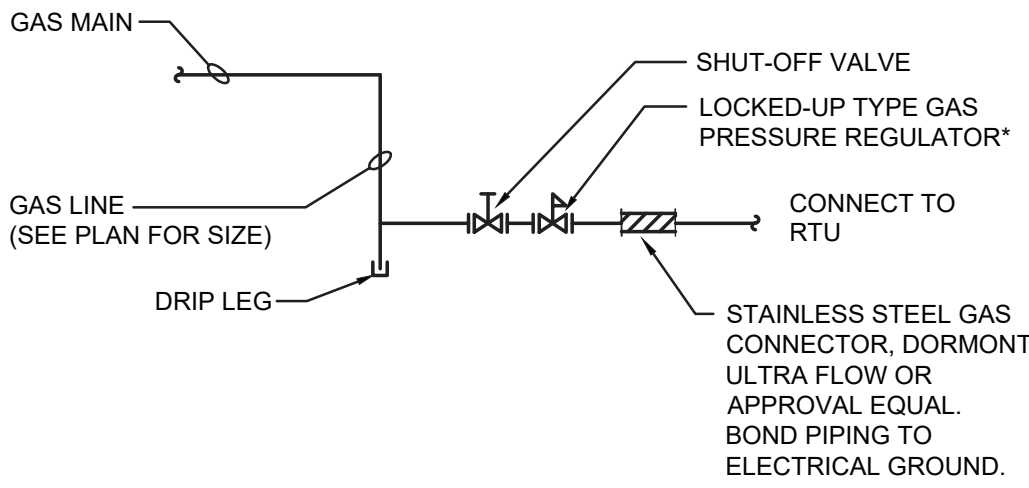


1
2
3
4
5
6
7
8
9
10
11

A B C D E F G H J K L M N O P

PLUMBING FIXTURE SCHEDULE															
NUMBER	FIXTURE	MANUFACTURER	TYPE & MODEL NO.	TRIM NO.	SUPPLY PIPE NO.	TRAP NO.	SUPPORT NO.	PIPE SIZES					DFU	WSFU	DESCRIPTION
								TRAP	WASTE	VENT	DCW	DHW			
(P-1)	SINK	ELKAY	LRAD252265	ELKAY LK810GN08T4	McGUIRE LF158	McGUIRE 8902C	COUNTER-TOP	1-1/2" x 1-1/2"	1-1/2"	1-1/2"	1/2"	1/2"	2	1	25"x22" TOP MOUNTED SINK W/ 3 HOLE 18 GAUGE 304 STAINLESS STEEL. PROVIDE W/ EXPOSED DECK FAUCET W/ 8' GOOSENECK SPOUT 4" WRIST-BLADE HANDLES, ELKAY GRID DRAIN & TAILPIECE #LK18B & WATTS TMV #LFUSG-N-M2. INSTALL TO MEET ADA REQUIREMENTS.
(P-2)	3" FLOOR DRAIN	J.R. SMITH	#2110Y	-	-	P-TRAP	-	3"	3"	2"	-	-	5	-	FLOOR DRAIN W/ HINGED GRATE, SEDIMENT BUCKET, NICKEL BRONZE ROUND TOP & J.R. SMITH QUAD CLOSE TRAP SEAL.
(P-3)	3" INDIRECT FLOOR DRAIN	J.R. SMITH	#3041	-	-	P-TRAP	-	3"	3"	2"	-	-	-	-	INDIRECT WASTE DRAIN W/ ALUMINUM RECESSED GRATE, SEDIMENT BUCKET & NICKEL BRONZE TOP.
(P-4)	4" INDIRECT FLOOR DRAIN	J.R. SMITH	#3041	-	-	P-TRAP	-	4"	4"	2"	-	-	-	-	INDIRECT WASTE DRAIN W/ ALUMINUM RECESSED GRATE, SEDIMENT BUCKET & NICKEL BRONZE TOP.
(P-5)	SERVICE SINK	FLORESTONE	99	-	-	P-TRAP	FLOOR MOUNTED	3"	3"	2"	3/4"	3/4"	3	3	HALF ROUND TERRAZZO MOP RECEPTOR. PROVIDE W/ MR-371 SPEAKMAN FAUCET W/ VACUUM BREAKER, DOUBLE STOPS AND BUCKET HOOK W/ BRACE, MR-370 5/8" HOSE & 5' LONG W/ CLAMP, MR-372 MOP HANGER W/ 3 CLAMPS, MR-374 WEDGE-LOK 3" DRAIN SEAL, MR-375 FLAT STRAINER, & MR-377 TWO (2) 32" PANELS.
(P-6)	BOTTLE FILLER STATION W/ BI-LEVEL WATER COOLERS	ELKAY	LZSTL8WSSP	-	McGUIRE LFS107	McGUIRE 201C	WALL-MOUNTED	1-1/4" x 1-1/2"	1-1/2"	1-1/2"	1/2"	-	0.5	0.5	EZ2HO BOTTLE FILLING STATION W/ FILTERED BI-LEVEL LZ COOLERS, S.S. BASIN W/ INTEGRAL DRAIN, S.S. COOLER CABINET, VANDAL-RESISTANT BUBBLER, WALL MOUNTING PLATE & WATERSENTRY PLUS FILTER. PROVIDE W/ SPARE FILTERS #51300C-3PK. INSTALL TO MEET ADA REQUIREMENTS.
(P-7)	GREASE INTERCEPTOR	J.R. SMITH	#8050	-	-	-	-	-	-	-	-	-	-	-	STEEL INTERCEPTOR W/ FLOW RATE OF 50 GPM & GREASE CAPACITY OF 100 LB. PROVIDE W/ PDI CERTIFICATION SEAL, FLOW CONTROL FITTING, ANCHOR FLANGE, EXTENSION (VERIFY HEIGHT IN FIELD) & NON-SKID ALUMINUM COVER.
	ROOF DRAIN	J.R. SMITH	#1015Y	-	-	-	-	-	-	-	-	-	-	-	PROVIDE W/ UNDERDECK CLAMP & CAST IRON DOME. REFER TO DWGS. FOR SIZES.



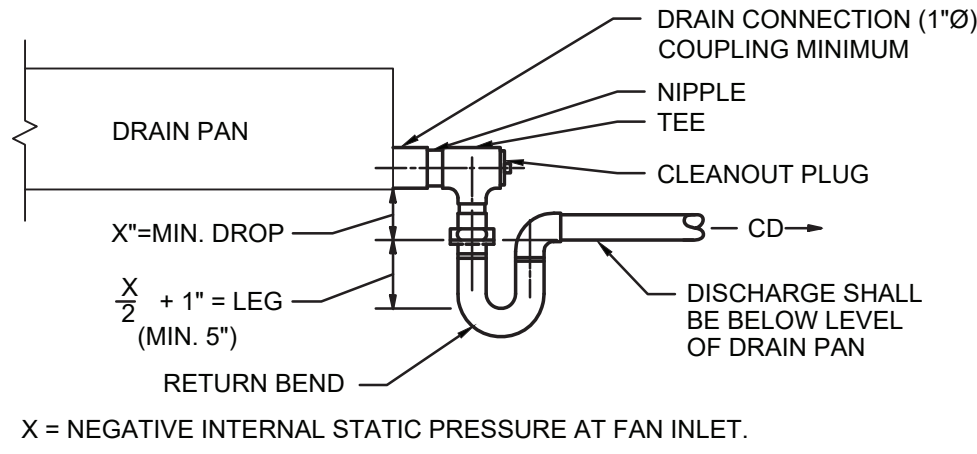
1 GAS CONNECTION DETAIL
NOT TO SCALE

DOMESTIC HOT WATER HEATER SCHEDULE												(LAARS AS STANDARD)
TAG No.	SERVICE	INPUT RATING (MBH)	RECOVERY RATE @ 100°F RISE (GPH)	STORAGE CAPACITY (GAL.)	THERMAL EFFICIENCY (%)	FLUE SIZE & TYPE	ELECTRIC DATA VOLT/PH/Hz	MODEL & MANUFACTURER	DIMENSION DIA. x H (IN.)	APPROX. WEIGHT (LB.)	REMARKS	
HWH-1	KITCHEN DHW SYSTEM	199	309	100	98.5	4"Ø PVC	115/1/60	UHE-100T-199E-3NA LAARS	28 x 78	900	SEE NOTES	
NOTES: 1. ASME RATED HEATER W/ STANDARD 150 PSI TEMPERATURE & PRESSURE RELIEF VALVE. 2. PROVIDE W/ PVC CONCENTRIC VENT KIT FOR EACH HEATER. 3. PROVIDE A CONDENSATE DRAIN (SCH.40 PVC) ON BOTTOM OF EXHAUST FLUE VENT & CONDENSATE ACID NEUTRALIZATION TUBE MODEL #JM-3 FOR EACH HEATER. PIPE TO NEAREST FLOOR DRAIN W/ A PROPER PITCH.												

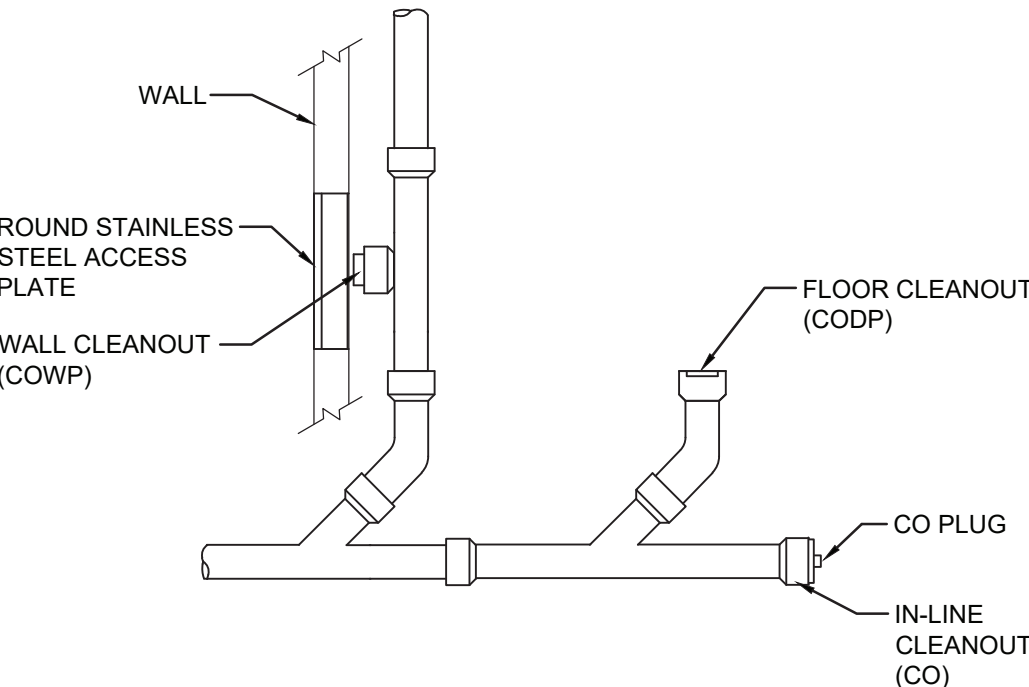
ELEVATOR SUMP PUMP SCHEDULE										(GOULDS PUMP AS STANDARD)
TAG No.	LOCATION	GPM	HD (FT)	HP	RPM	ELECTRICAL DATA VOLT/PH/Hz	MODEL & MANUFACTURER		REMARKS	
ESP-1	ELEVATOR SUMP PIT	50	15	1/3	3,450	115/1/60	ELKTWE0511H	GOULDS PUMP	ELEVATOR SUMP PUMP. PROVIDE W/ CONTROL PANEL (ITT CENTRIPRO MODEL #A1SEE1) WITH LIQUID SMART SWITCH & HIGH ALARM CONTROLS, OIL SMART SWITCH (ITT CENTRIPRO MODEL #A1SEEWAWTER), & CHECK & SHUTOFF VALVES.	

CONDENSATE DRAIN PUMP SCHEDULE												(LITTLE GIANT AS STANDARD)
TAG No.	UNIT SERVED	LOCATION	PERFORMANCE (GPH @ HEAD)	SHUT OFF	ELECTRICAL DATA				MODEL & MANUFACTURER	UNIT DIMENSIONS (L x W x H) (IN)	APPROX. WEIGHT (LBS.)	REMARKS
			10'	FEET	HP	VOLT/PH/Hz	AMPS	WATTS				
CDP-1, 2	NEW UVs	STORAGE C07 & ART C10	48	20	1/30	115/1/60	1.5	93	VCMA-20UL LITTLE GIANT	10-1/2 x 5-1/8 x 7-1/8	5.0	

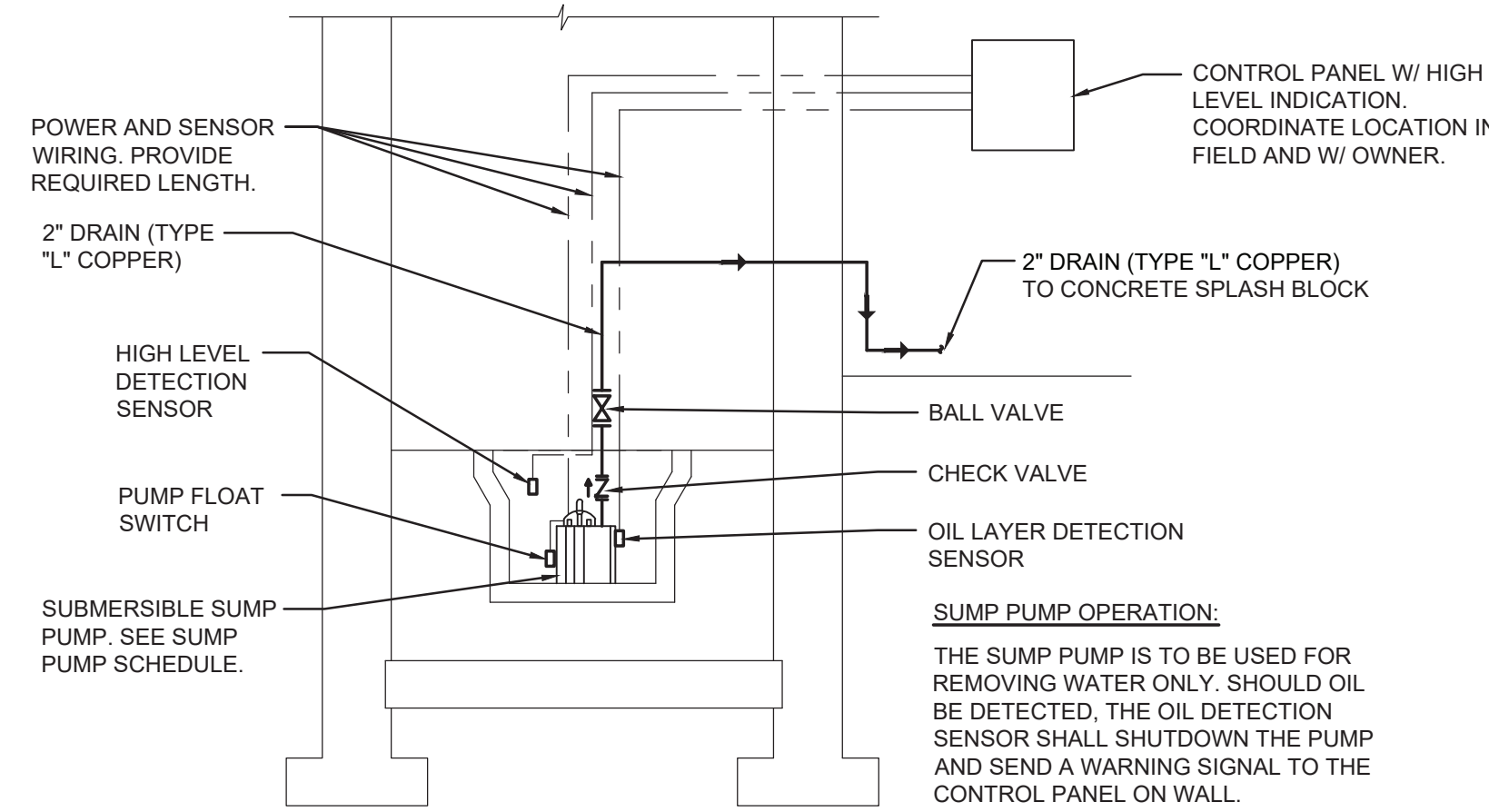
NOTES:
1. ALLOW SUFFICIENT SPACE BELOW DRAIN PAN FOR TRAP.
2. PITCH DRAIN FOR PROPER RUN-OFF.
3. MANUALLY, PRIME FILL TRAP BEFORE START-UP TO FORM INITIAL DRAIN SEAL.
4. SUPPORT LENGTHY DRAIN LINES TO PREVENT SAG AND CONDENSATE OVERFLOW.



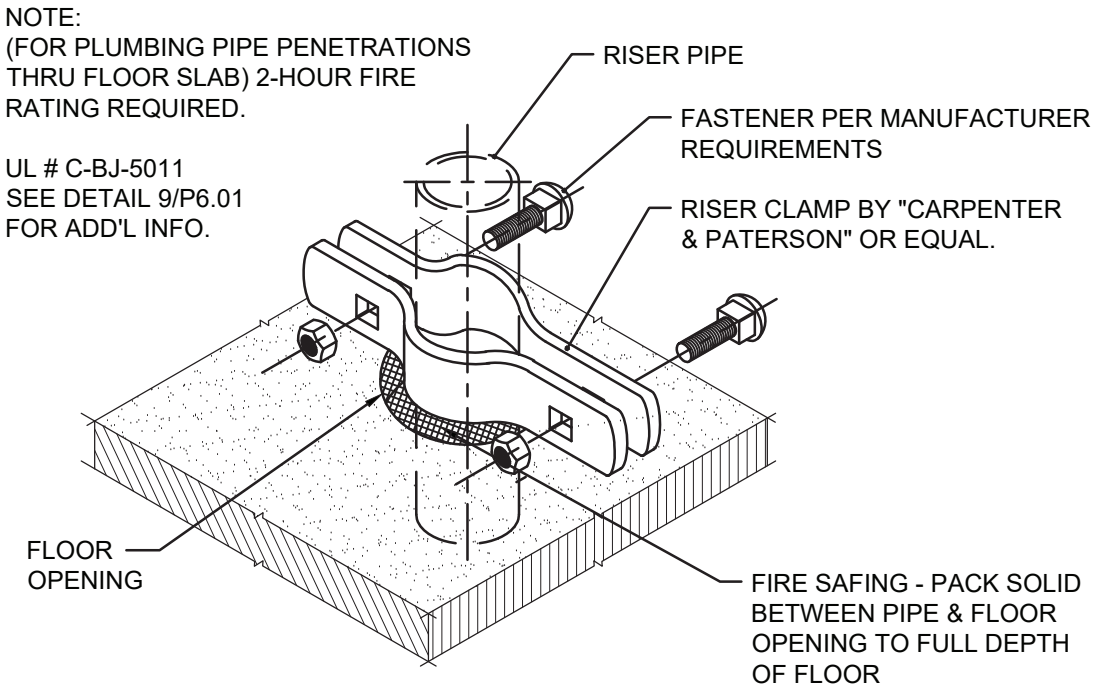
2 CONDENSATE DRAIN TRAP DETAIL
NOT TO SCALE



3 CLEANOUT DETAIL
NOT TO SCALE

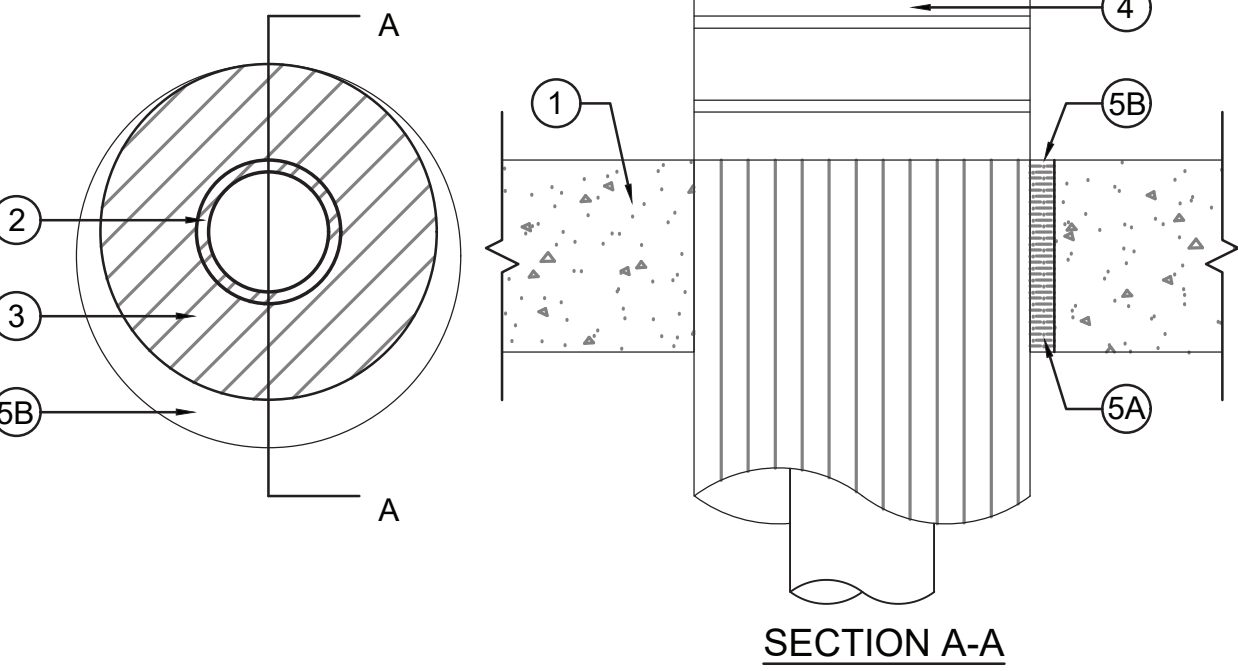


4 ELEVATOR SUMP PUMP PIPING DETAIL
NOT TO SCALE

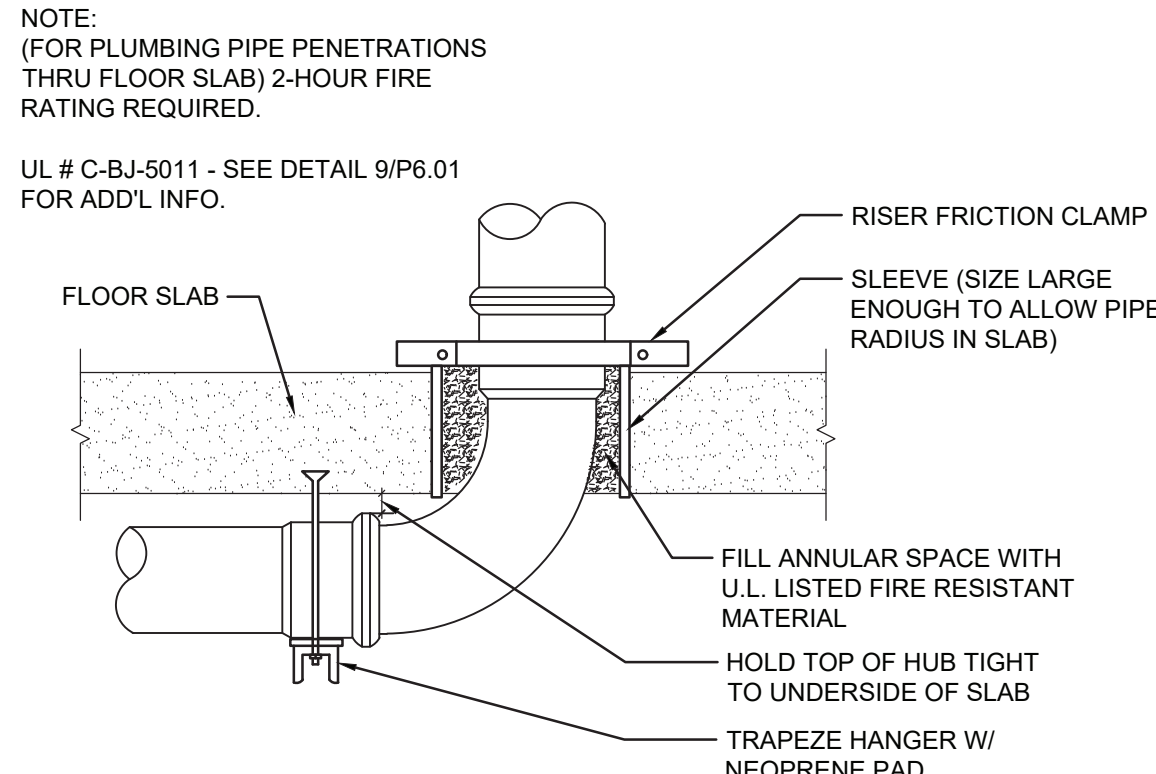


5 PIPE RISER CLAMP
NOT TO SCALE

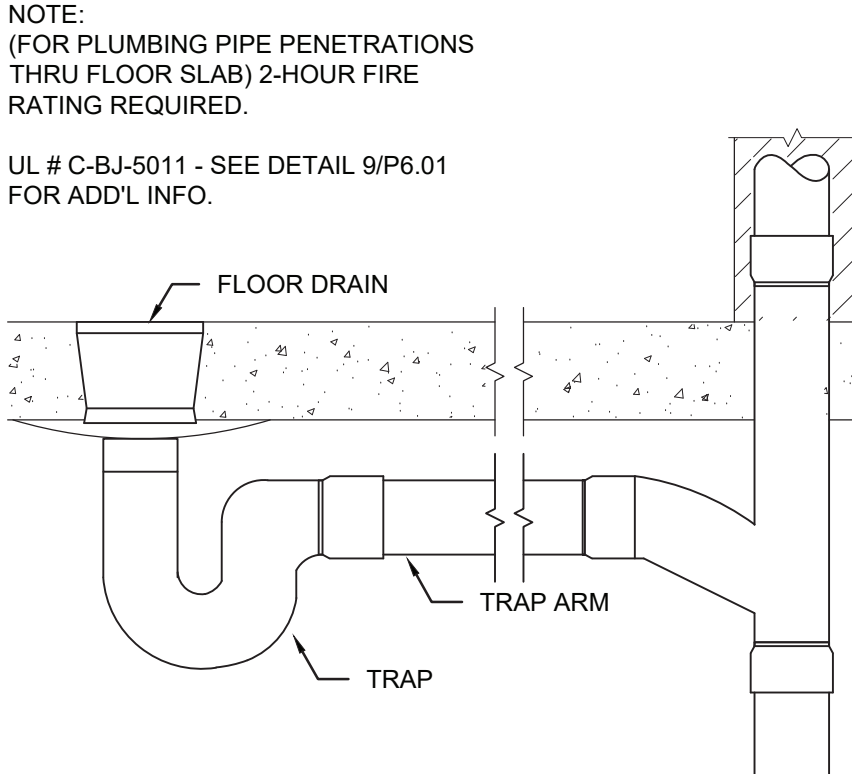
UL SYSTEM NO. C-BJ-5011
F RATINGS - 2 HR.
T RATING - 2 HR.



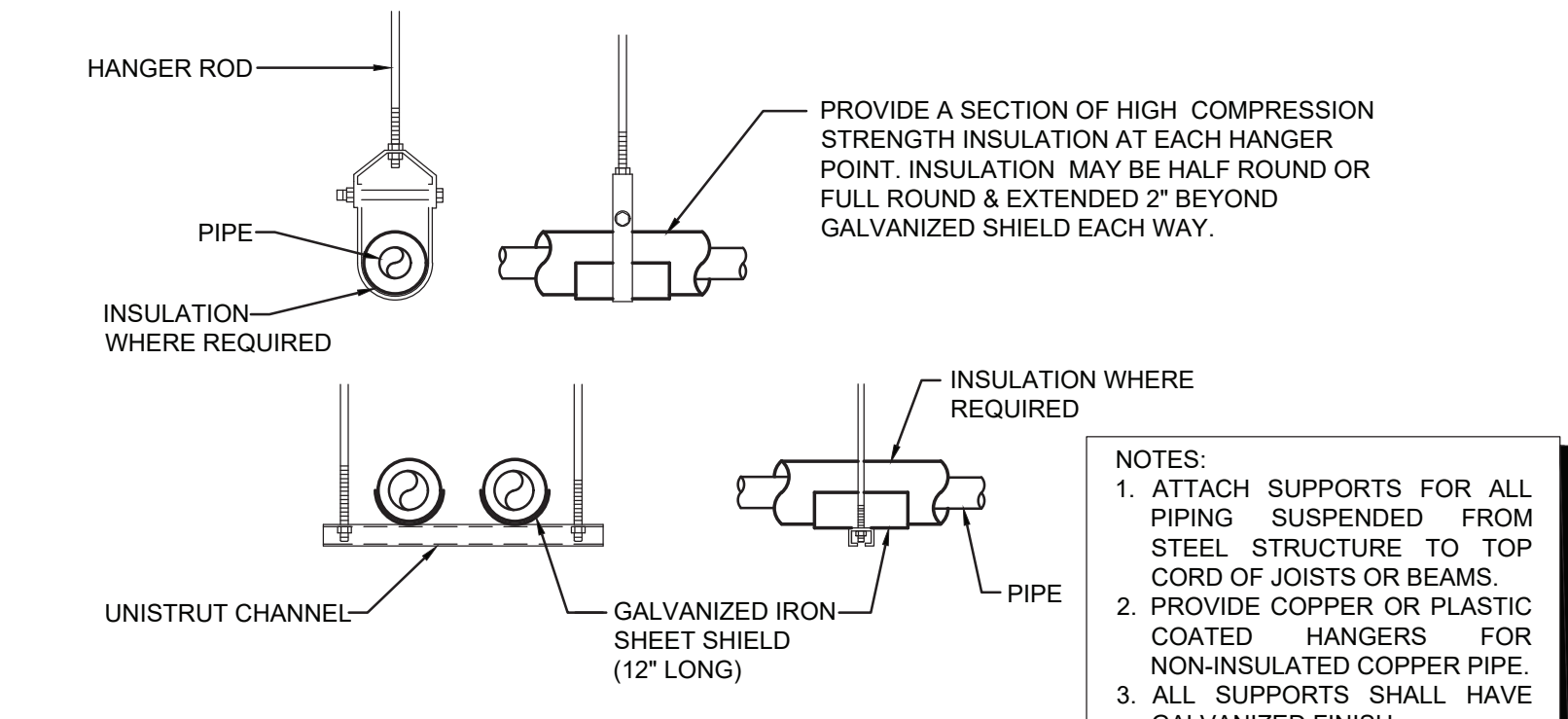
9 TYPICAL PIPE PENETRATION (ALL LOCATIONS)
NOT TO SCALE



6 BASE OF STACK DETAIL
NOT TO SCALE

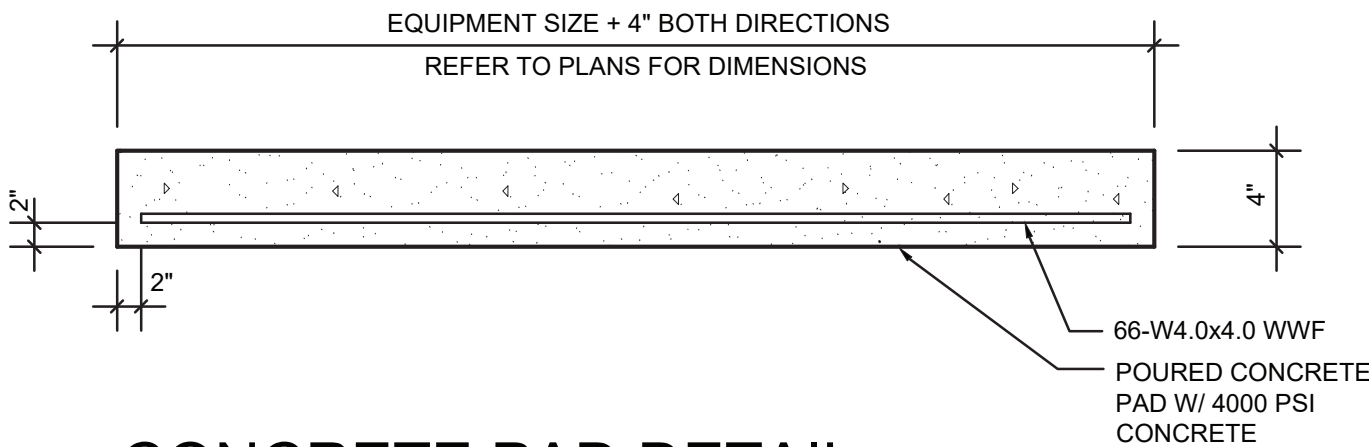


7 FLOOR DRAIN DETAIL
NOT TO SCALE



8 PIPE SUPPORT HANGERS
NOT TO SCALE

1. Floor or Wall Assembly - Min 5-1/2 in. thick reinforced lightweight or normal weight (100-150 pcf) concrete. Wall may also be constructed of any UL Classified Concrete Blocks*. Max dim. of opening is 14 in. See Concrete Blocks (CAZT) category in the Fire Resistance Directory for names of manufacturers.
- Through Penetrants - One metallic pipe or tubing to be installed either concentrically or eccentrically within the firestop system. Pipe or tubing to be rigidly supported on both sides of floor or wall assembly.
- Pipe Covering* - Cellular Glass Insulation - Max 3 in. thick cellular glass units sized to the outside diam. of the steel pipe and supplied in nom 24 in. long half sections or nom 18 in. long segments. The annular space shall be min 0.3 in. (point contact) to max 2 in. Pipe insulation installed on pipe in accordance with the manufacturer's instructions. PITTSBURGH CORING CORP - FOAMGLAS
- Metal Jacket - Min. 12 in. long jacket formed on min. 0.010 in. thick steel or aluminum sheet cut to wrap tightly around the pipe insulation with a min. 2 in. lap. Jacket secured with min. 1/2 in. wide stainless steel hose clamps or bands located within 2 in. of each end of the jacket and spaced a max. of 10 in. O.C.
4. Jacket to be installed with edges abutting surface of caulk fill material (Item 5) on both surfaces of wall. Metal jacket to be used in addition to any other jacketing material which may be required to or desired on the pipe insulation.
- Firestop System - The firestop system shall consist of the following:
- A Packaging Material - Min 5 in. thickness of min. 4 pcf mineral wool batt insulation firmly packed into opening as a permanent form. Packaging material to be recessed from top surface of floor or from both surfaces of wall as required to accommodate the required thickness of fill material.
- B Fill, Void or Cavity Material* - Sealant - Min. 1/2 in. thickness of fill material applied within the annulus, flush with top surface of floor or with both surfaces of wall. At point contact location between penetrant and periphery of opening, a min. 1/2 in. diam. bead of fill material shall be applied at the periphery of opening/pipe covering interface on top surface of floor assembly or both surfaces of wall assembly.
- JOHNS MANVILLE INTERNATIONAL INC - Firetemp
- *Bearing the UL Classification Mark



10 CONCRETE PAD DETAIL
NOT TO SCALE

DATE: 1/10/20
CHECKED: AL
DRAWN: AL/IM

MICHAEL J. MCGOVERN, R.A.
REGISTERED ARCHITECT
License No. 022257-1

Revisions:
11/23/20
UNAUTHORIZED ALTERATIONS OR ADDITIONS TO THIS DOCUMENT IS A VIOLATION OF SECTION 2209 OF THE NEW YORK STATE EDUCATION LAW. THESE DOCUMENTS REMAIN THE EXCLUSIVE PROPERTY OF THE ENGINEER, AND MAY NOT BE USED FOR ANY PURPOSE WHATSOEVER WITHOUT THE WRITTEN CONSENT OF THE ENGINEER.

LAN ASSOCIATES
engineering • planning • architecture • surveying
252 MAIN STREET, GOSHEN, NEW YORK 10924 (845)819-0350

PLUMBING SCHEDULES & DETAILS
2019 BOND REFERENCE
CHATSWORTH AVENUE ELEMENTARY SCHOOL
MAMARONECK UNION FREE SCHOOL DISTRICT
CHATSWORTH AVENUE, LARCHMONT, NY 10538

Job No. 4.1092.72.03
File No. 10927203P201
P6.01