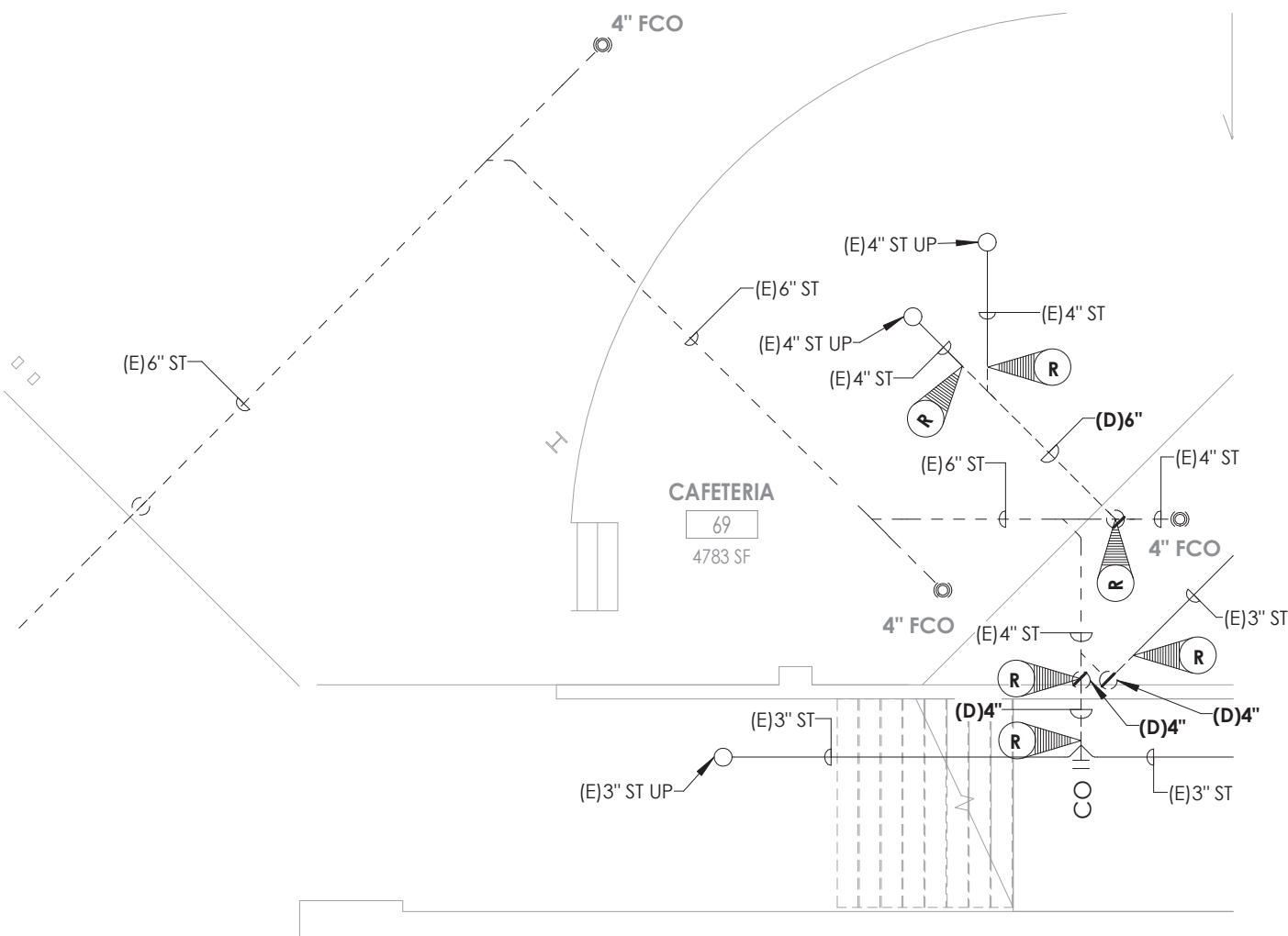
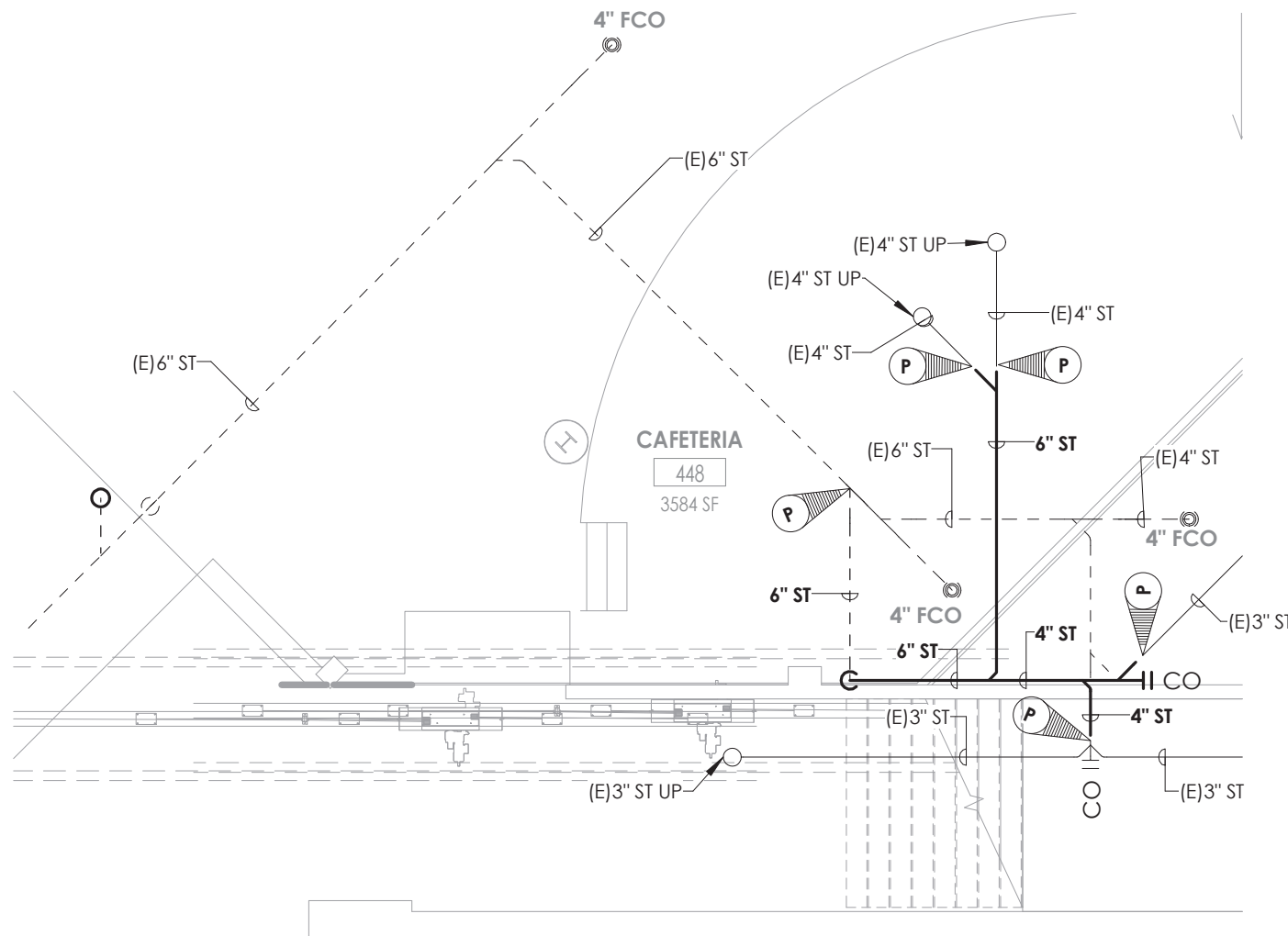


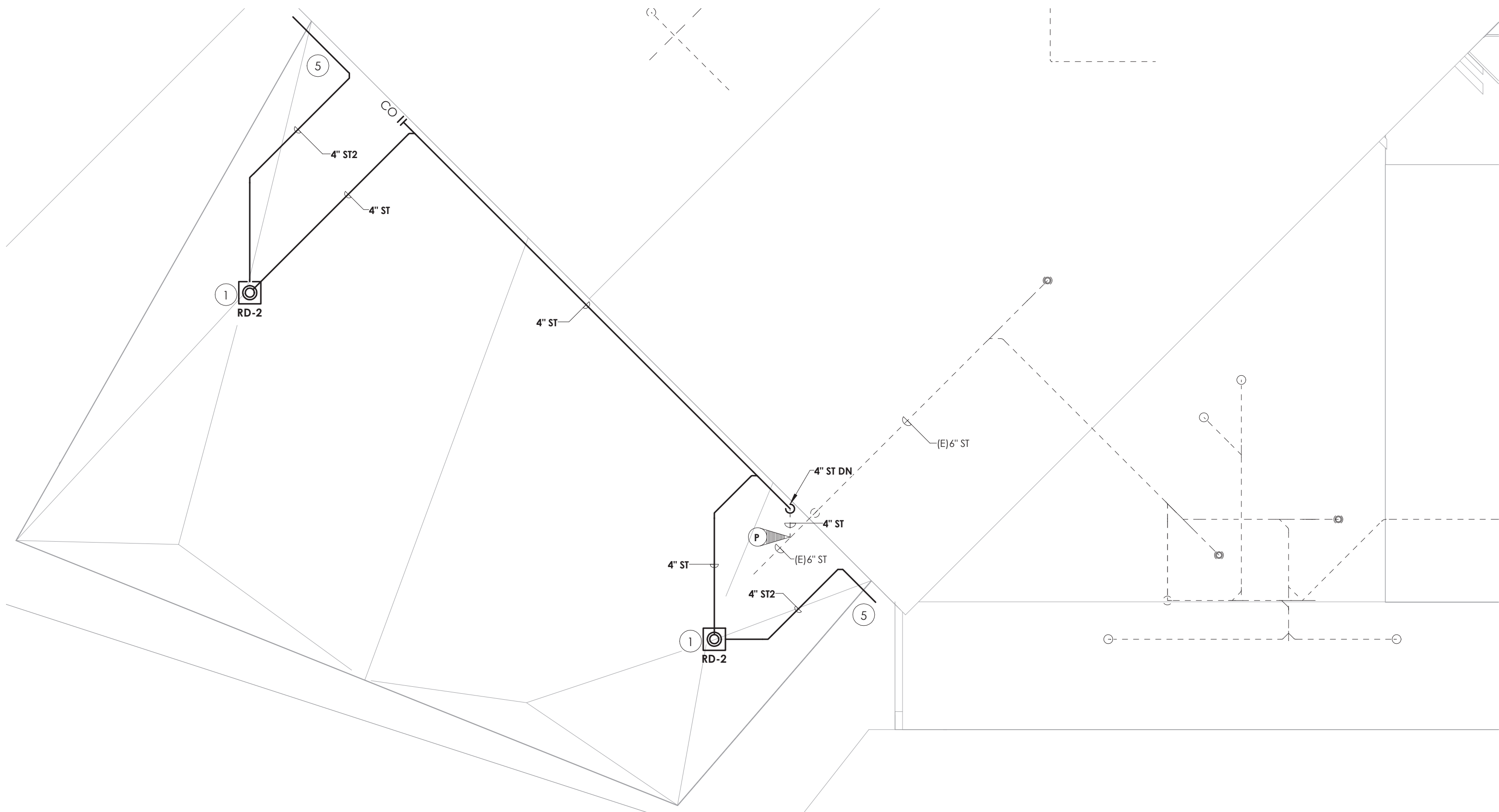
1 CHILLER PUMP ROOM MAKE-UP WATER  
1/8" = 1'-0"



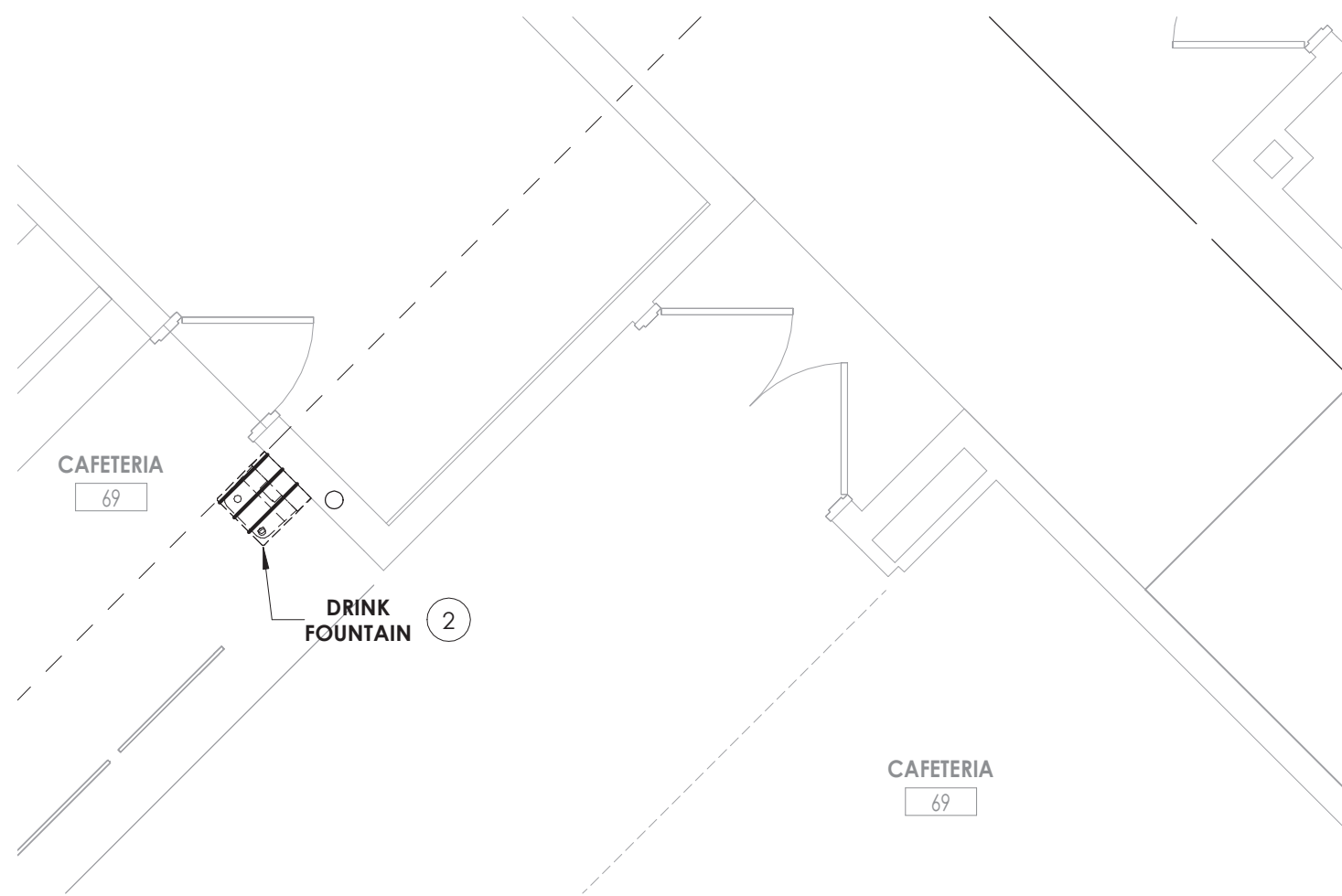
2 CAFETERIA DEMOLITION PLAN  
1/8" = 1'-0"



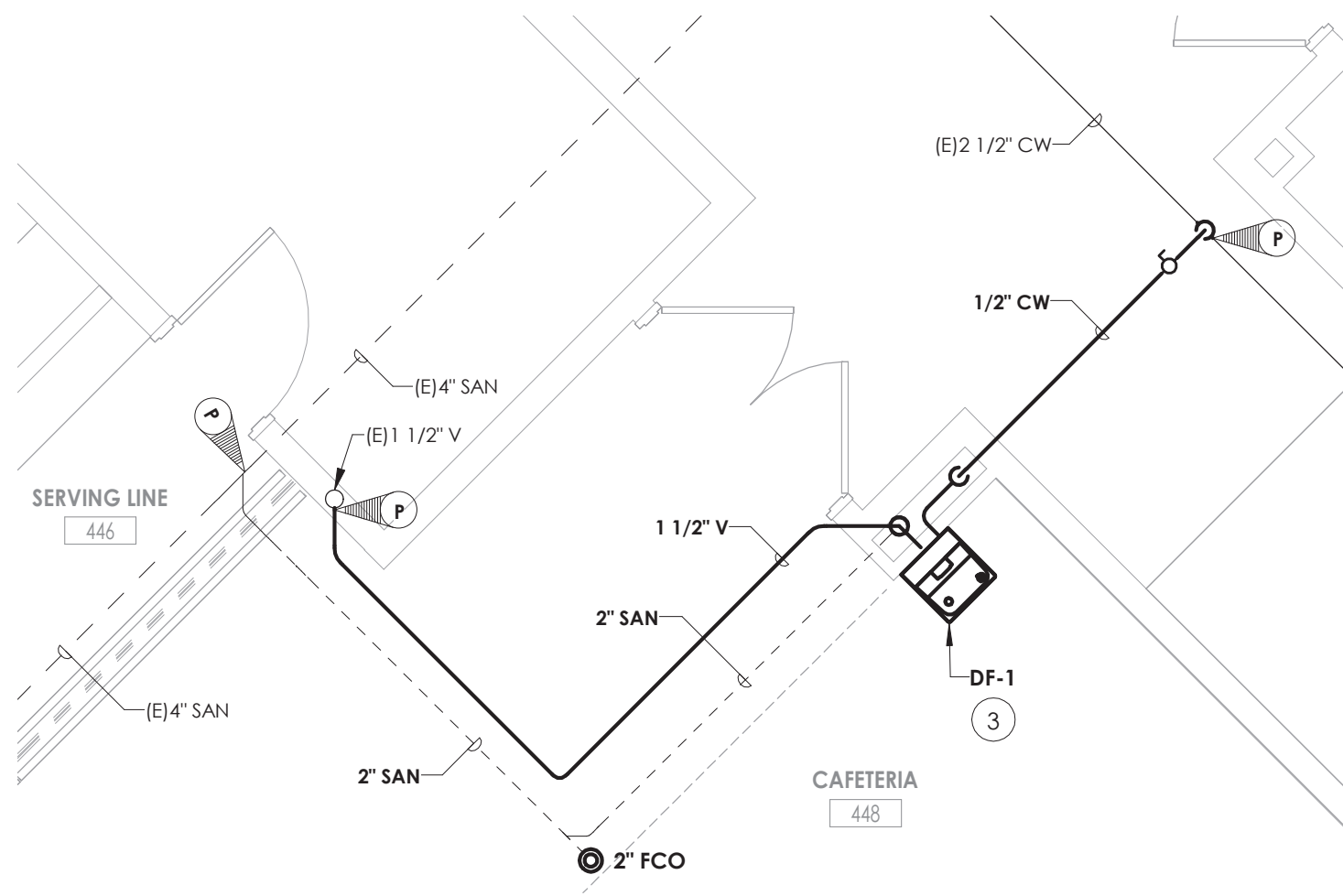
3 CAFETERIA NEW WORK PLAN  
1/8" = 1'-0"



4 CAFETERIA ROOF STORM PIPING PLAN  
1/8" = 1'-0"



5 DRINKING FOUNTAIN REMOVAL  
1/4" = 1'-0"



6 DRINKING FOUNTAIN INSTALL  
1/4" = 1'-0"

PLUMBING EQUIPMENT & FIXTURE SCHEDULE								
MARK	FIXTURE	CW	HW	SAN	V	DESCRIPTION	Manufacturer	Model
DF-1	DRINK FOUNTAIN	1/2"		1 1/2"	1 1/2"	SINGLE FOUNTAIN, WALL MOUNT ADA, VANDAL RESISTANT WITH BOTTLE FILLER, REFRIGERATED, SURFACE MOUNT	ELKAY	VRCBWSK
EP-1	EJECTOR PUMP			2"	2"	EJECTOR PUMP	WEIL PUMPS	1409
EP-2	EJECTOR PUMP			2"	2"	EJECTOR PUMP	WEIL PUMPS	1409
RD-1	ROOF DRAIN			4"		ROOF DRAIN, 12" DIA DOME WITH ADJUSTABLE COLLAR, SUMP RECEIVER, UNDER DECK CLAMP	JOSAM	21500-AE
RD-2	ROOF DRAIN (DUAL OUTLET)			4"		DUAL OUTLET ROOF DRAIN, 12" DIA DOME WITH ADJUSTABLE COLLAR, SUMP RECEIVER, UNDER DECK CLAMP	ZURN INDUSTRIES	Z103-45

KEY NOTES:

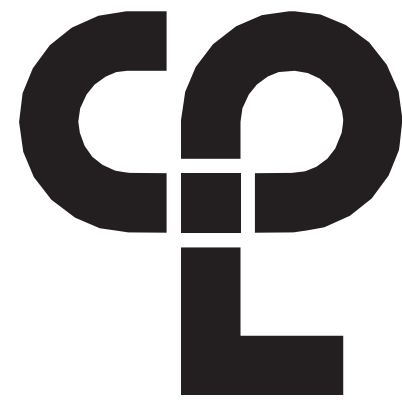
- 1 PROVIDE DUAL OUTLET ROOF DRAIN, MOUNTED ABOVE ROOF DECK AND CONNECT TO STORM & SECONDARY DRAIN PIPING SYSTEMS WITHIN CEILING SPACE.
- 2 DISCONNECT & REMOVE EXISTING DRINKING FOUNTAIN, TRIM, AND RELATED WATER/DRAIN/VENT PIPING.
- 3 PROVIDE DRINK FOUNTAIN, SUPPORTS, COLD WATER SUPPLY LINE, SUPPLY SHUT OFF VALVE, SANITARY PIPING, & VENT PIPING.
- 4 PROVIDE 1" CW MAKE-UP TO CHILLER PUMP ROOM WITH WATTS SERIES 007 DOUBLE CHECK VALVE ASSEMBLY AND CAP. COORDINATE WITH HVAC MECHANICAL CONTRACTOR FOR CONNECTION TO MECHANICAL EQUIPMENT.
- 5 PROVIDE SECONDARY STORM PIPING WITHIN CEILING SPACE AND OUTLET JUST BELOW ROOF AWNING ON EXTERIOR WALL. COORDINATE WITH ARCHITECT FOR FINAL OUTLET LOCATION.

PIPING LEGEND

- XX PIPING
- XX PIPING BELOW GRADE
- x EXISTING PIPING
- ST STORM
- PLUMBING TO BE REMOVED

FIXTURES & FITTINGS LEGEND

- TEE OUTLET - UP
- TEE OUTLET - DOWN
- CONNECTION - BOTTOM
- CONNECTION TOP
- ELBOW - TURNED UP
- ELBOW - TURNED DOWN
- PIPE CAP
- CLEAN OUT
- FLOOR CLEAN OUT
- WALL CLEAN OUT
- ROOF DRAIN
- PIPE GUIDE
- PIPE ANCHOR
- FLEXIBLE PIPE CONNECTOR
- EXPANSION JOINT
- POINT OF CONNECTION
- POINT OF REMOVAL



CPL | Architecture Engineering Planning  
50 FRONT ST, SUITE 202  
NEWBURGH, NY 12550  
CPLteam.com

PROJECT INFORMATION

Project Number  
13940.18  
Client Name

NEWBURGH ENLARGED CITY  
SCHOOL DISTRICT

Project Name  
PHASE 3: HERITAGE MIDDLE  
SCHOOL 2019 CAPITAL  
IMPROVEMENT PROJECT

Project Address  
405 Union Avenue, New Windsor, NY 12553

SED Number  
44-16-00-01-0-039-011

PROJECT ISSUE SCHEDULE

No. Date Description

IT IS A VIOLATION OF THE NEW YORK STATE EDUCATION LAW AND THE COMMISSIONER'S REGULATIONS FOR ANY PERSON, UNLESS ACTING UNDER THE DIRECTION OF A LICENSED ARCHITECT, ENGINEER OR LAND SURVEYOR, TO ALTER AN ITEM IN ANY WAY IF AN ITEM BEARING THE SEAL OF AN ARCHITECT, ENGINEER OR SURVEYOR IS ALTERED. THE ALTERING PARTY SHALL AFFIX TO THE ITEM THEIR SEAL AND THE NOTATION "ALTERED BY" FOLLOWED BY THEIR SIGNATURE AND THE DATE OF SUCH ALTERATION, AND A SPECIFIC DESCRIPTION OF THE ALTERATION.

SHEET INFORMATION

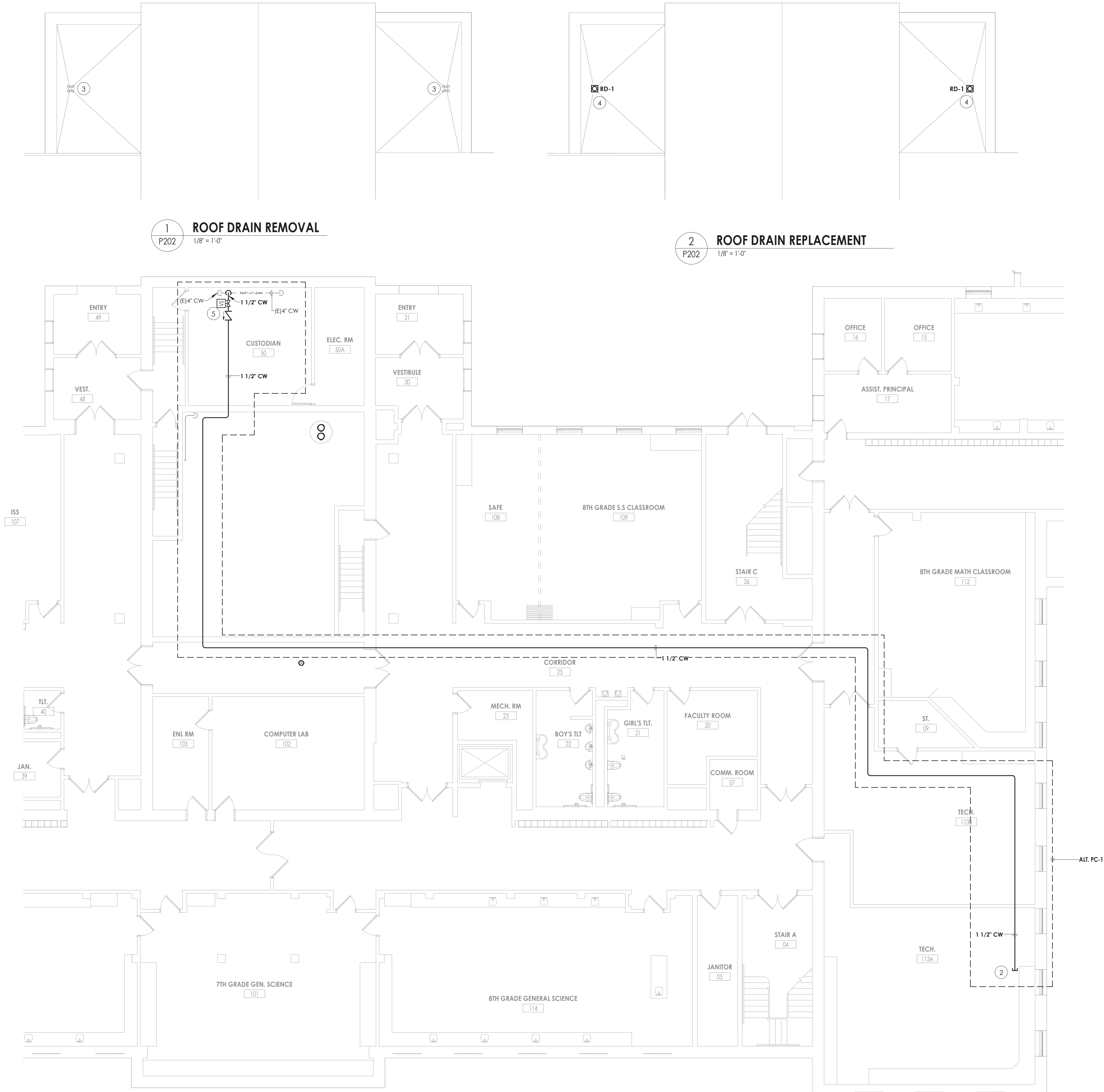
Issued  
09/09/2021  
Scale  
As indicated  
Project Status  
CONSTRUCTION DOCUMENTS  
Drawn By  
Author  
Checked By  
Checker  
Drawing Title  
ADDITION RENOVATION PLAN

Drawing Number



P201

9/2/2021 3:06:46 PM S:\Projects\Newburgh ECSD\Heritage MS Admin & Reno\0 Design\06 CAD\Revit



1  
P202  
1/8" = 1'-0"

ROOF DRAIN REMOVAL

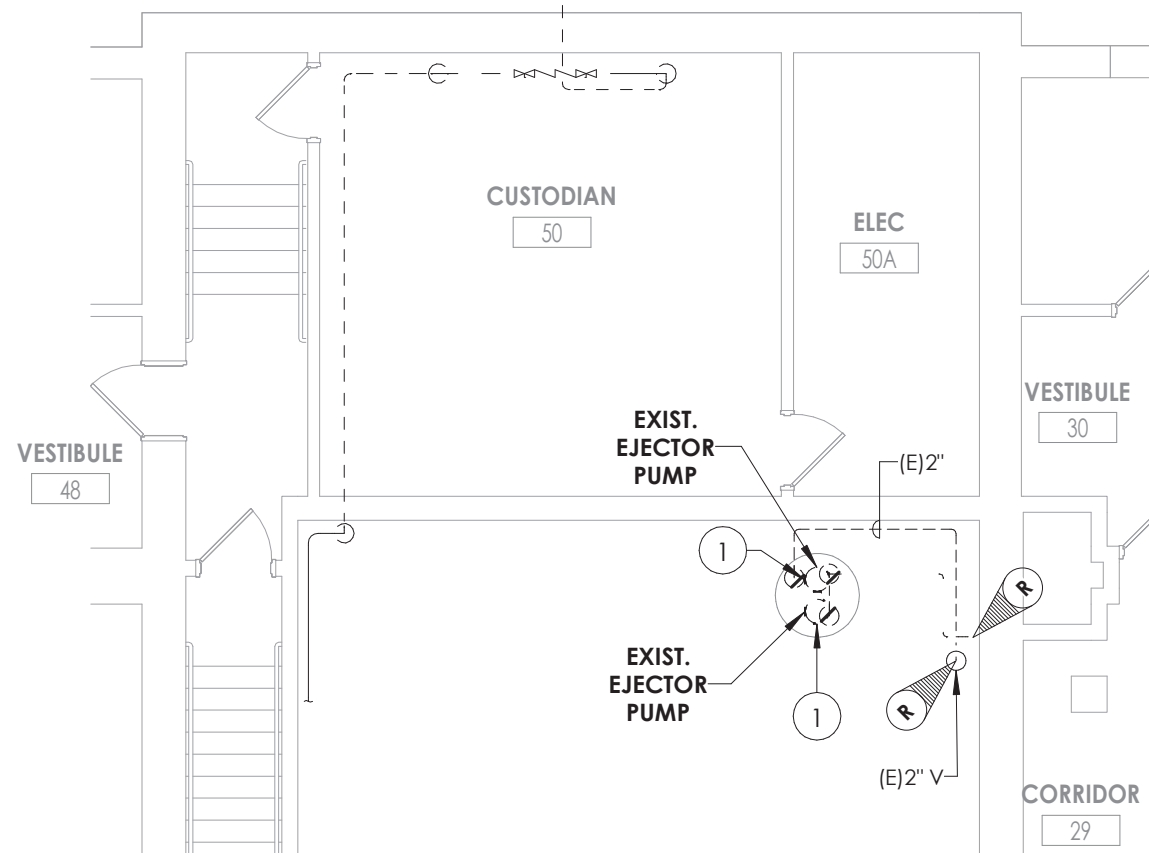
2  
P202  
1/8" = 1'-0"

ROOF DRAIN REPLACEMENT

3  
P202  
1/8" = 1'-0"

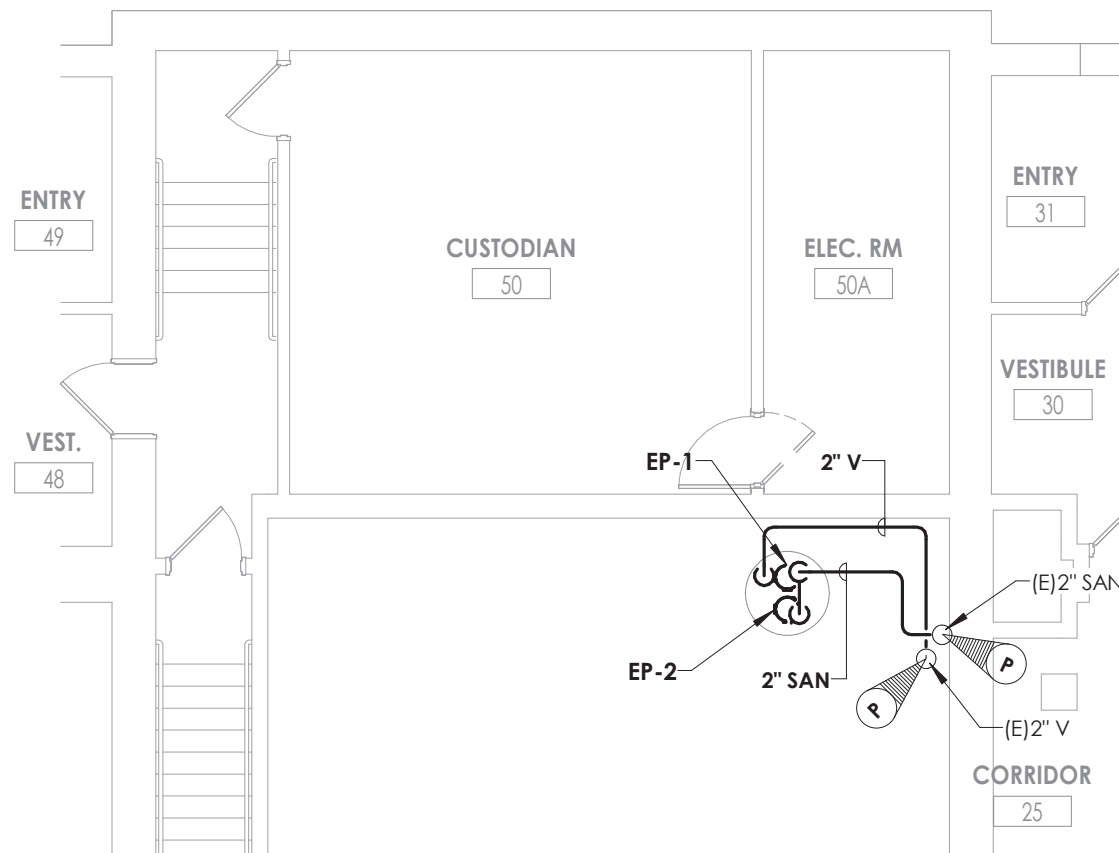
DUST COLLECTOR FIRE SUPPRESSION

- KEY NOTES:**
- 1 DISCONNECT & REMOVE EXISTING SEWAGE EJECTOR PUMP. REMOVE ASSOCIATED SANITARY AND VENT PIPING BACK TO POINT OF DISCONNECTION.
  - 2 COORDINATE WITH MECHANICAL CONTRACTOR TO CONNECT 1-1/2" CW TO DUST COLLECTION SYSTEM EXTINGUISHING SPARK ARRESTING FITTING.
  - 3 DISCONNECT AND REMOVE EXISTING ROOF DRAIN. RETAIN EXISTING STORM SYSTEM PIPING, AND PREPARE FOR RECONNECTION OF NEW ROOF DRAIN.
  - 4 PROVIDE ROOF DRAIN AND CONNECT TO EXISTING STORM SYSTEM PIPING.
  - 5 CONNECT 1-1/2" CW PIPING TO DOMESTIC WATER SERVICE ENTRANCE AFTER RPZ. PROVIDE TAMPER SWITCH AND DOUBLE CHECK VALVE ON NEW 1 1/2" BRANCH. PROVIDE WATTS SERIES 007 DOUBLE CHECK VALVE ASSEMBLY. COORDINATE WITH ELECTRICAL CONTRACTOR TO CONNECT TAMPER SWITCH WIRING TO BUILDING FIRE ALARM NOTIFICATION PANEL.



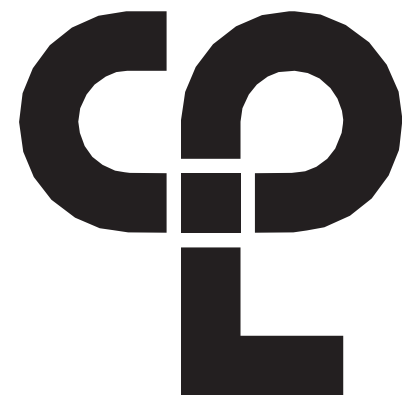
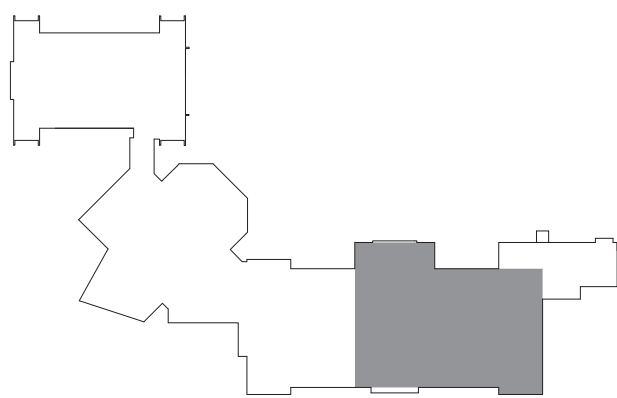
4  
P202  
1/8" = 1'-0"

BOILER ROOM DEMOLITION PLAN



5  
P202  
1/8" = 1'-0"

BOILER ROOM NEW WORK PLAN



CPL | Architecture Engineering Planning  
50 FRONT ST. SUITE 202  
NEWBURGH, NY 12550  
CPLteam.com

**PROJECT INFORMATION**

Project Number  
13940.18  
Client Name  
**NEWBURGH ENLARGED CITY SCHOOL DISTRICT**  
Project Name  
**PHASE 3: HERITAGE MIDDLE SCHOOL 2019 CAPITAL IMPROVEMENT PROJECT**

Project Address  
405 Union Avenue, New Windsor, NY 12553

SED Number  
44-16-00-01-0-039-011

**PROJECT ISSUE SCHEDULE**

No. Date Description

IT IS A VIOLATION OF THE NEW YORK STATE EDUCATION LAW AND THE COMMISSIONER'S REGULATIONS FOR ANY PERSON, UNLESS ACTING UNDER THE DIRECTION OF A LICENSED ARCHITECT, ENGINEER OR LAND SURVEYOR, TO ALTER AN ITEM IN ANY WAY IF AN ITEM BEARING THE SEAL OF AN ARCHITECT, ENGINEER OR SURVEYOR IS ALTERED. THE ALTERING PARTY SHALL AFFIX TO THE ITEM THEIR SEAL AND THE NOTATION: "ALTERED BY" FOLLOWED BY THEIR SIGNATURE AND THE DATE OF SUCH ALTERATION, AND A SPECIFIC DESCRIPTION OF THE ALTERATION.

**SHEET INFORMATION**

Issued  
09/09/2021  
Scale  
As indicated  
Project Status  
CONSTRUCTION DOCUMENTS  
Drawn By  
MS  
Checked By  
MS  
Drawing Title  
FIRST FLOOR RENOVATION

Drawing Number