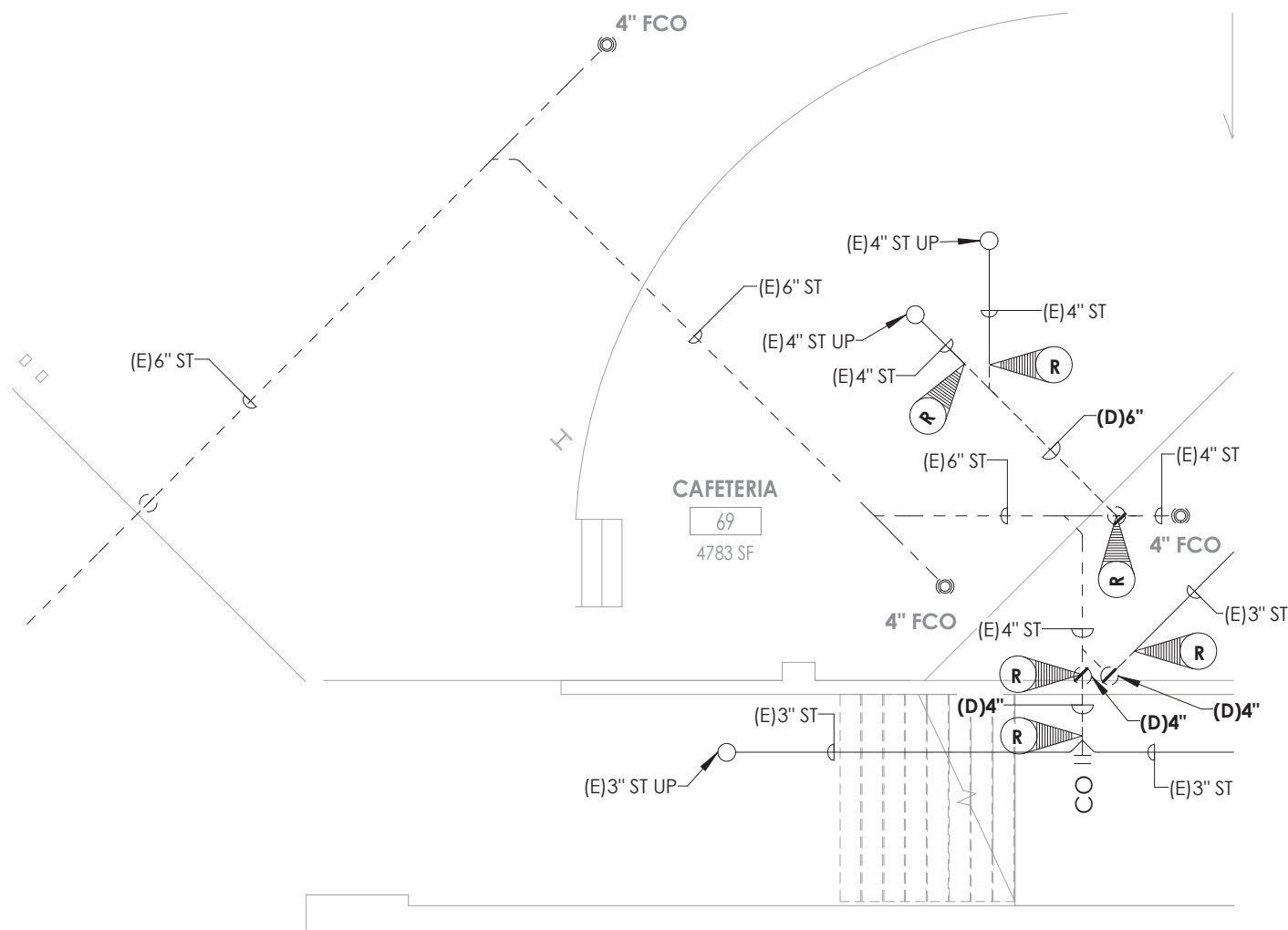


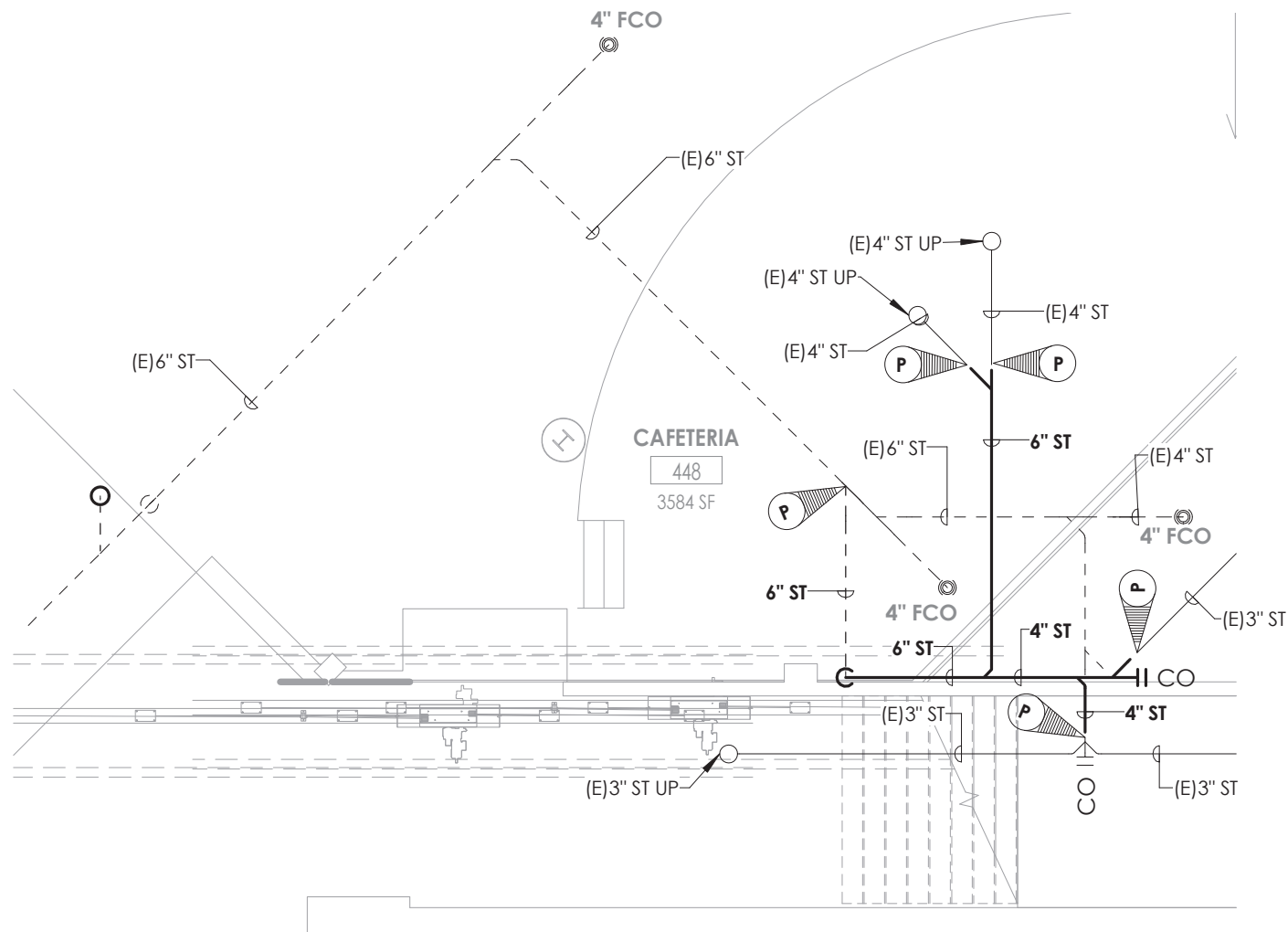
1
P201
1/8" = 1'-0"

CHILLER PUMP ROOM MAKE-UP WATER



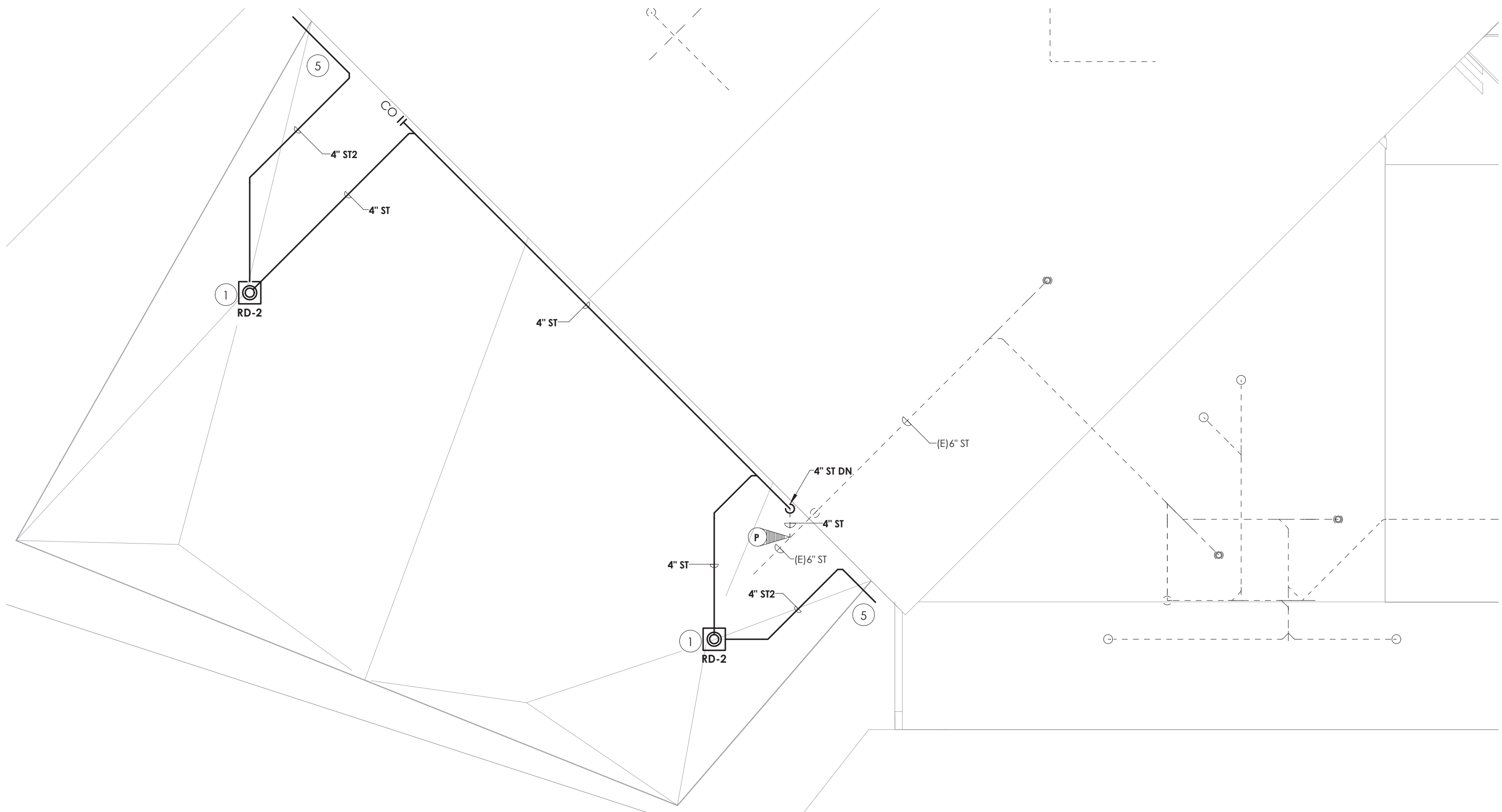
2
P201
1/8" = 1'-0"

CAFETERIA DEMOLITION PLAN



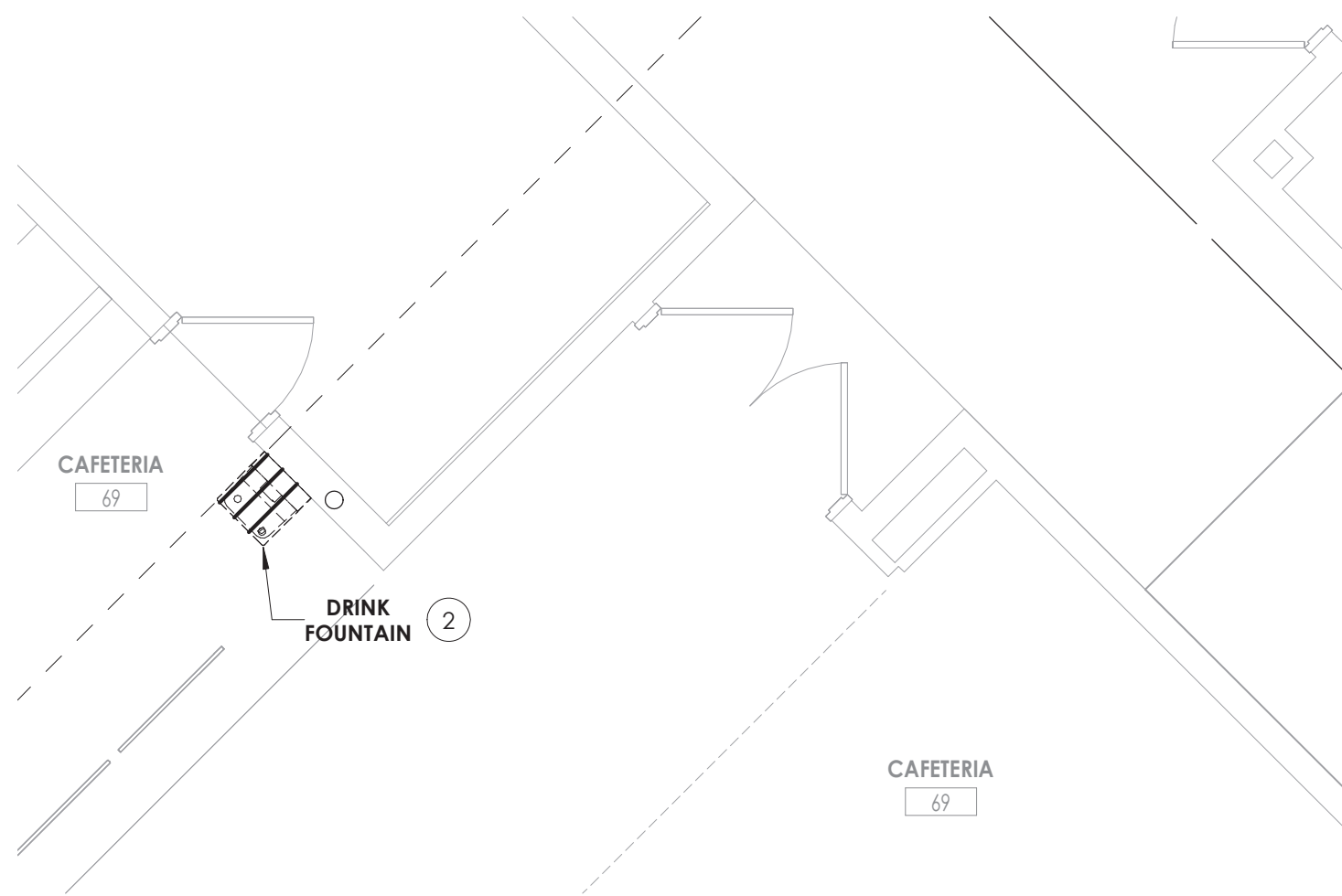
3
P201
1/8" = 1'-0"

CAFETERIA NEW WORK PLAN



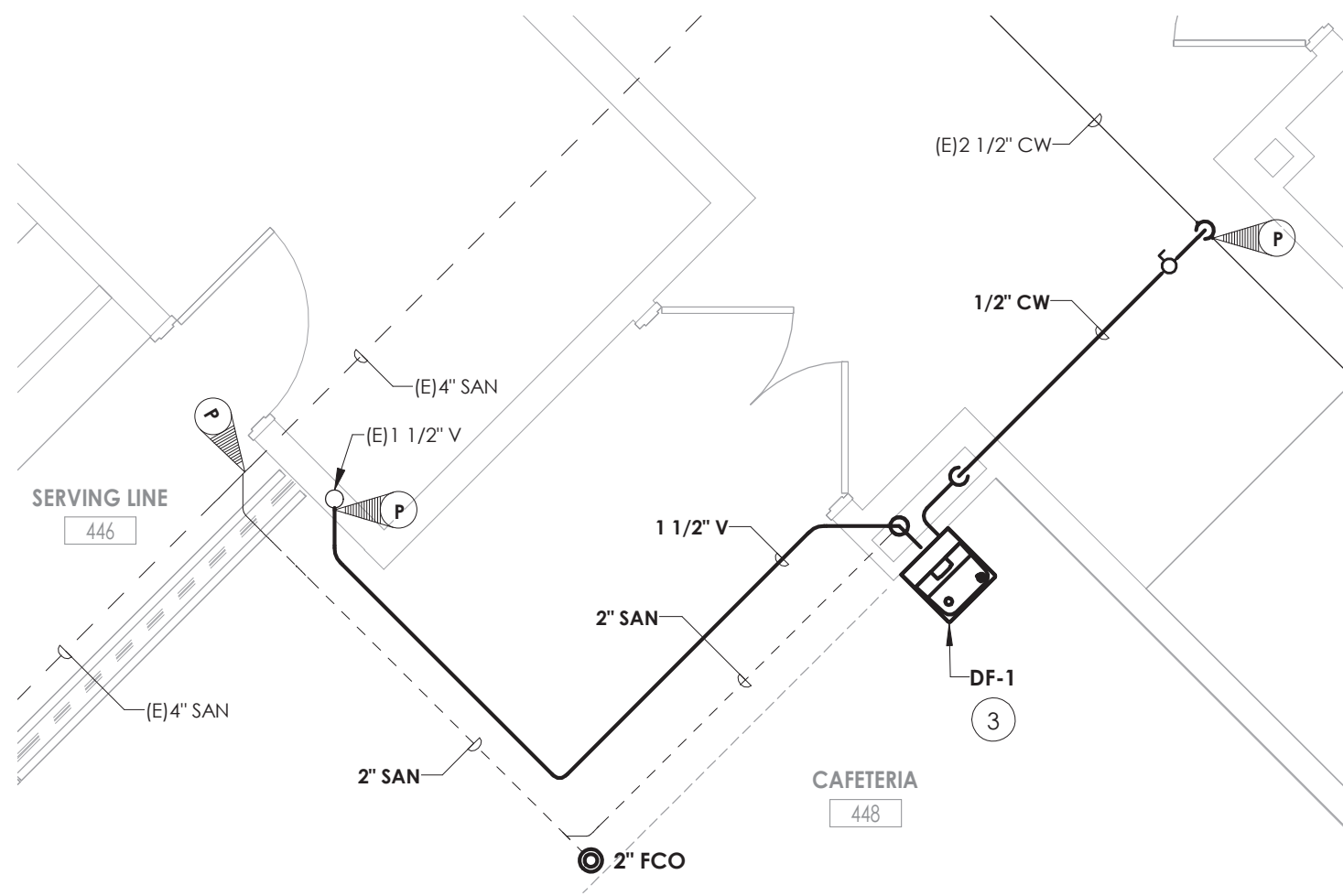
4
P201
1/8" = 1'-0"

CAFETERIA ROOF STORM PIPING PLAN



5
P201
1/4" = 1'-0"

DRINKING FOUNTAIN REMOVAL



6
P201
1/4" = 1'-0"

DRINKING FOUNTAIN INSTALL

PIPING LEGEND

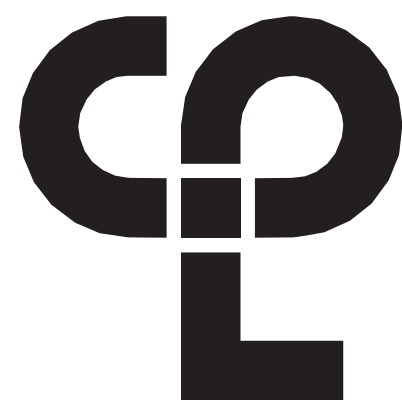
- XX — PIPING
- - - XX - - - PIPING BELOW GRADE
- x — EXISTING PIPING
- ST STORM
- ////// PLUMBING TO BE REMOVED

FIXTURES & FITTINGS LEGEND

- TEE OUTLET - UP
- TEE OUTLET - DOWN
- CONNECTION - BOTTOM
- CONNECTION TOP
- ELBOW - TURNED UP
- ELBOW - TURNED DOWN
- PIPE CAP
- CLEAN OUT
- FLOOR CLEAN OUT
- WALL CLEAN OUT
- ROOF DRAIN
- PIPE GUIDE
- PIPE ANCHOR
- FLEXIBLE PIPE CONNECTOR
- EXPANSION JOINT
- POINT OF CONNECTION
- POINT OF REMOVAL

KEY NOTES:

- 1 PROVIDE DUAL OUTLET ROOF DRAIN, MOUNTED ABOVE ROOF DECK AND CONNECT TO STORM & SECONDARY DRAIN PIPING SYSTEMS WITHIN CEILING SPACE.
- 2 DISCONNECT & REMOVE EXISTING DRINKING FOUNTAIN, TRIM, AND RELATED WATER/DRAIN/VENT PIPING.
- 3 PROVIDE DRINK FOUNTAIN, SUPPORTS, COLD WATER SUPPLY LINE, SUPPLY SHUT OFF VALVE, SANITARY PIPING, & VENT PIPING.
- 4 PROVIDE 1" CW MAKE-UP TO CHILLER PUMP ROOM WITH WATTS SERIES 007 DOUBLE CHECK VALVE ASSEMBLY AND CAP. COORDINATE WITH HVAC MECHANICAL CONTRACTOR FOR CONNECTION TO MECHANICAL EQUIPMENT.
- 5 PROVIDE SECONDARY STORM PIPING WITHIN CEILING SPACE AND OUTLET JUST BELOW ROOF AWNING ON EXTERIOR WALL. COORDINATE WITH ARCHITECT FOR FINAL OUTLET LOCATION.



CPL | Architecture Engineering Planning
50 FRONT ST, SUITE 202
NEWBURGH, NY 12550
CPLteam.com

PROJECT INFORMATION

Project Number
13940.18
Client Name

**NEWBURGH ENLARGED CITY
SCHOOL DISTRICT**

Project Name
**PHASE 3: HERITAGE MIDDLE
SCHOOL 2019 CAPITAL
IMPROVEMENT PROJECT**

Project Address
405 Union Avenue, New Windsor, NY 12553

SED Number
44-16-00-01-0-039-011

PROJECT ISSUE SCHEDULE

No. Date Description

IT IS A VIOLATION OF THE NEW YORK STATE EDUCATION LAW AND THE COMMISSIONER'S REGULATIONS FOR ANY PERSON, UNLESS ACTING UNDER THE DIRECTION OF A LICENSED ARCHITECT, ENGINEER OR LAND SURVEYOR, TO ALTER AN ITEM IN ANY WAY IF AN ITEM BEARING THE SEAL OF AN ARCHITECT, ENGINEER OR SURVEYOR IS ALTERED. THE ALTERING PARTY SHALL AFFIX TO THE ITEM THEIR SEAL AND THE NOTATION "ALTERED BY" FOLLOWED BY THEIR SIGNATURE AND THE DATE OF SUCH ALTERATION, AND A SPECIFIC DESCRIPTION OF THE ALTERATION.

SHEET INFORMATION

Issued
09/09/2021
Scale
As indicated
Project Status
CONSTRUCTION DOCUMENTS
Drawn By
Author
Checked By
Checker
Drawing Title
ADDITION RENOVATION PLAN

Drawing Number



P201