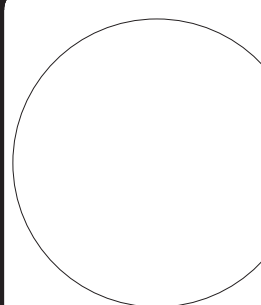


US Army Corps  
of Engineers®



SEAL AND SIGNATURE DATE

DATE

DATE

DATE

DATE

DATE

DATE

DATE

DATE

DATE

DATE

DATE

DATE

DATE

DATE

DATE

DATE

DATE

DATE

DATE

DATE

DATE

DATE

DATE

ISSUE DATE:  
DESIGNED BY:  
DRAWN BY:  
CHECKED BY:  
SUBMITTED BY:

US ARMY CORPS OF ENGINEERS  
LOUISVILLE DISTRICT  
LOUISVILLE, KY  
SAVIN ENGINEERS P.C.  
3 CAMPUS DRIVE PLEASANTVILLE, NY 10570

UNITED STATES ARMY RESERVE CENTER  
ORANGEBURG, NEW YORK  
ELECTRICAL  
POWER ROOF PLAN

SHEET ID

EP105

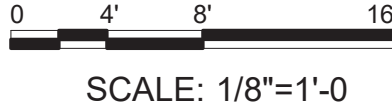


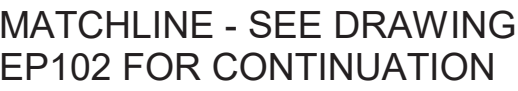


0 4' 8' 16'

SCALE: 1/8"=1'-0"

# EP103





0 4' 8' 16'

SCALE: 1/8"=1'-0"

1. FOR ADDITIONAL NOTES, SYMBOLS AND ABBREVIATIONS SEE DRAWING E-001.

2. ALL RECEPTACLES SHALL BE FLUSH MOUNTED UNLESS NOTED OTHERWISE.

3. UNLESS NOTED OTHERWISE ALL RECEPTACLES SHALL USE #12 AWG WIRE AND GROUND.

4. UNLESS NOTED OTHERWISE, ALL RECEPTACLES SHOWN SHALL BE CIRCUITED VIA POWER PANEL PP-PD. SEE PANEL SCHEDULE ON DRAWING EP603 FPR ADDITIONAL INFORMATION.

5. FOR RECEPTACLES SHOWN TO BE TURNED ON/OFF VIA OCCUPAANCY SENSORS, SEE DRAWING EP501 FOR TYPICAL WIRING DIAGRAM.

6. CONTRACTOR SHALL COORDINTE ALL RECEPTACLE EXACT LOCATIONS WITH NOTES ON DRAWING IF001.

7. RECEPTACLES TO BE USED FOR "TV" POWER (TV) SHALL BE RECESSED MOUNTED 6"0" A.F.F..

8. UNLESS NOTED OTHERWISE, ALL ROUND FLOOR MOUNTED RECEPTACLES (RECESSED) SHALL BE NON-COMBINATION 120 VOLT POWER OUTLETS ONLY.

9. FOR ROUND FLOOR MOUNTED RECEPTACLES (RECESSED) REQUIRING DATA OUTLETS, COORDINATE WITH IT DRAWINGS.

- 1 WORK TABLE WITH BACKSPASH. (19A) SEE DRAWING EP403 FOR ADDITIONAL INFORMATION. POWER FOR THESE 3 RECEPTACLES COME FROM PP-BK.
- 2 UNLESS NOTED OTHERWISE ALL RECEPTACLES IN ASSEMBLY AREA 1019 AND CLASSROOM 1018 SHALL BE CIRCUITED VIA PANEL PP-PC.
- 3 QUAD RECEPTACLE FOR PA SYSTEM. COORDINATE EXACT LOCATION OF PA SYSTEM COMPONENTS WITH DATA DRAWINGS. POWER FOR RECEPTACLE IS VIA PP-PC.
- 4 POWER OUTLETS FOR VENDING MACHINES.
- 5 RECESSED FLOOR BOX REQUIRES COMBINATION 120 VOLT OUTLET AND TELECOM / DATA PORTS.



5	Revision 5 (CORRECTED FINAL)			Date 5
3	Revision 3 (INTERIM)			Date 4

US ARMY CORPS OF ENGINEERS LOUISVILLE DISTRICT LOUISVILLE, KY	DESIGNED BY: KC	ISSUE DATE:
	DRAWN BY: JC	SOLICITATION NO.: W912CR20R038
	CHECKED BY: DF	CONTRACT NO.: W912CR-XX-XXXX
3 CAMPUS DRIVE PLEASANTVILLE, NY 10570	SUBMITTED BY:	

UNITED STATES ARMY RESERVE CENTER  
ORANGEBURG, NEW YORK

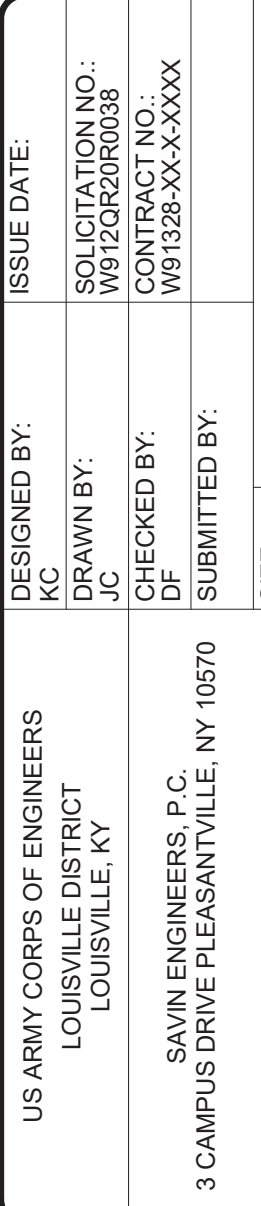
SHEET ID

EP101

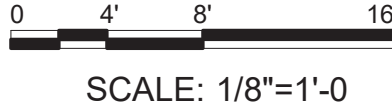
CORRECTED FINAL SUBMISSION JULY 29, 2021



- ## KEYNOTES
- |   |   |
|---|---|
| 1 | EXISTING PERIMETER WALL MOUNTED LIGHTING FIXTURES TO REMAIN AND BE REUSED. EXISTING CIRCUITING (CONDUIT AND WIRE) AND LIGHTING CONTROLS SHALL REMAIN AND BE REUSED.     |
| 2 | EXISTING PERIMETER WALL MOUNTED LIGHTING FIXTURE TO BE DISCONNECTED, REMOVED AND RELOCATED. EXTEND EXISTING CIRCUITING AS NECESSARY FOR NEW LOCATION (SEE DWG EL-101B). |
| 3 | CARE SHALL BE TAKEN SO AS NOT TO DAMAGE EXISTING POLE, FOUNDATION AND FLOOD LIGHTING FIXTURES DURING CONSTRUCTION OF NEW ADDITION.                                      |



SHEET ID  
ED105



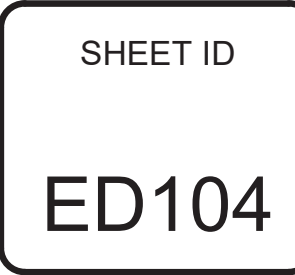
FOR ADDITIONAL NOTES, SYMBOLS AND ABBREVIATIONS SEE DRAWING E-001.

UNLESS NOTED OTHERWISE, CONTRACTOR SHALL DISCONNECT AND REMOVE ALL LIGHT FIXTURES, EXIT UNITS, EMERGENCY LIGHTING UNITS, SWITCHES, CONDUIT AND WIRE. CONDUIT AND WIRE TO BE REMOVED BACK TO POWER SOURCE.

ALL FLUORESCENT, EXIT AND EMERGENCY FIXTURES SHALL BECOME THE PROPERTY OF THE CONTRACTOR AND DISPOSED OF LEGALLY. ALL EXISTING LED FIXTURES SHALL BE CAREFULLY PACKAGED AND TURNED OVER TO THE FACILITY OWNER.

ALL EXISTING EXTERIOR ROADWAY AND PARKING LOT CIRCUITING AND CONTROLS SHALL REMAIN AND BE REUSED

- ① EXISTING PERIMETER WALL MOUNTED LIGHTING FIXTURES TO REMAIN AND BE REUSED. EXISTING CIRCUITING (CONDUIT AND WIRE) AND LIGHTING CONTROLS SHALL REMAIN AND BE REUSED.
- ② EXISTING PERIMETER WALL MOUNTED LIGHTING FIXTURES TO BE DISCONNECTED, REMOVED AND RELOCATED. EXTEND EXISTING CIRCUITING AS NECESSARY FOR NEW LOCATION (SEE DWG EL-101).
- ③ EXISTING FLAG POLE FLOOD LIGHT TO BE DISCONNECTED, REMOVED AND RELOCATED TO NEW FLAG POLE LOCATION. EXTEND EXISTING CIRCUITING AS NECESSARY.







# 1 INTERIOR FLOOR PLAN

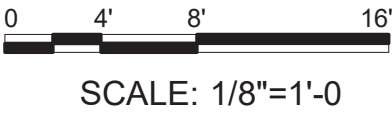
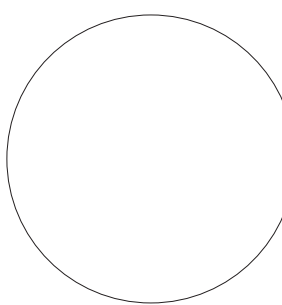
$$1/8'' = 1'-0''$$

- ## NOTES

1. FOR ADDITIONAL NOTES, SYMBOLS AND ABBREVIATIONS SEE DRAWING E-001.
2. FOR REMOVAL GUIDE INFORMATION OF CONDUIT AND WIRE SEE PANEL SCHEDULE ON DRAWINGS EP601 AND EP602.
3. CONTRACTOR SHALL DISCONNECT AND REMOVE ALL EXISTING ABOVE CEILING AND WALL MOUNTED HVAC EQUIPMENT DISCONNECT AND REMOVE ALL EXISTING CONDUIT AND WIRE BACK TO POWER SOURCE.

## KEYNOTES

- EXISTING 350 AMP PANEL PP-PK TO BE DISCONNECTED AND REMOVED. DISCONNECT AND REMOVE ALL EXISTING BRANCH CIRCUITS AND ASSOCIATED CONDUIT AND WIRE. REMOVE FEEDER CABLE BACK TO MDP. CONDUIT MAY BE REUSED.
- 2 KITCHEN AREA. DISCONNECT AND REMOVE ALL KITCHEN EQUIPMENT POWER AND ASSOCIATED CONDUIT AND WIRE.
- 3 EXISTING 225KVA TRANSFORMER TO REMAIN AND BE REUSED. DISCONNECT AND REMOVE SECONDARY CABLES (208Y/120 VOLT, 3 PHASE, 4 WIRE).
- 4 EXISTING 800AMP MAIN DISTRIBUTION SWITCHBOARD TO BE DISCONNECTED AND RELOCATED TO NEW ELECTRICAL ROOM.
- 5 EXISTING 30KW NATURAL GAS GENERATOR TO REMAIN AND BE REUSED. ALL EXISTING GENERATOR ELECTRICAL CONNECTIONS (CONDUIT AND WIRE) IN BETWEEN THE GENERATOR AND ATS SHALL REMAIN AND BE REUSED.
- 6 LOCATION OF EXISTING GENERATOR ATS AND ASSOCIATED EMERGENCY GENERATOR PANEL TO REMAIN AND BE REUSED. WITH THE EXCEPTION OF CIRCUITS 1 AND 8 (8,10,12) ALL BRANCH FEEDER CIRCUITS (CONDUIT AND WIRE) SHALL BE DISCONNECTED AND REMOVED. CONTRACTOR SHALL TRACE OUT THE 50 AMP, 3 POLE CIRCUIT TO DETERMINE WHAT THIS IS ACTUALLY SERVING.
- 7 LOCATION OF PANEL PP-PB TO BE DISCONNECTED AND REMOVED. PANEL SHALL BE REPLACED WITH NEW IN SAME LOCATION. DISCONNECT AND REMOVE ALL ASSOCIATED BRANCH FEEDER CIRCUITS (CONDUIT AND WIRE) AND ASSOCIATED FEEDER CIRCUIT.
- 8 LOCATION OF EXISTING EXTERIOR LIGHTING CONTROL CONTACTOR AND ASSOCIATED PANEL LP-L SHALL BE DISCONNECTED AND REMOVED AND REPLACED IN KIND TO MATCH EXISTING. PANEL TO BE UPGRADED TO 22KA. ALL EXISTING LIGHTING CIRCUITS TO REMAIN AND BE REUSED.
- 9 ALL EXISTING HVAC/BOILER EQUIPMENT, ASSOCIATED CIRCULATION PUMPS AND DISCONNECT SWITCHES TO BE DISCONNECTED AND REMOVED. ALL ASSOCIATED CONDUIT AND WIRE SHALL BE REMOVED. SEE MECHANICAL DEMOLITION DRAWINGS FOR ADDITIONAL INFORMATION.
- 10 EXISTING PANEL LP-LC TO BE DISCONNECTED AND REMOVED. DISCONNECT AND REMOVE ALL EXISTING BRANCH CIRCUIT WIRING (CONDUIT AND WIRE).
- 11 EXISTING VAULT. DISCONNECT AND REMOVE ALL IN-ROOM CONDUIT WIRE RECEPTACLES, SWITCHES ETC. THIS INCLUDES EQUIPMENT MOUNTED OUTSIDE THE VAULT ROOM DOOR.
- 12 LOCATION OF EXISTING PANELS LP-LG AND PP-PG. UNLESS NOTED OTHERWISE DISCONNECT AND REMOVE ALL BRANCH CIRCUITS (CONDUIT AND WIRE) AND ASSOCIATED FEEDER CIRCUIT. BOTH PANELS SHALL REMAIN AND BE REUSED. CONTRACTOR SHALL KEEP GARAGE OVERHEAD DOOR CIRCUITS.
- 13 EXISTING GARAGE DOOR OPENERS AND ASSOCIATED CONTROLS SHALL REMAIN AND BE REUSED.
- 14 LOCATION OF FAN UNIT. DISCONNECT AND REMOVE ALL CONDUIT AND WIRE BACK TO POWER SOURCE.

US Army Corps  
of Engineers ®

SEAL AND SIGNATURE \_\_\_\_\_

[illegible]

US ARMY CORPS OF ENGINEERS LOUISVILLE DISTRICT LOUISVILLE, KY	DESIGNED BY: KC	ISSUE DATE:
3 CAMPUS DRIVE PLEASANTVILLE, NY 10570	DRAWN BY: KC	SOLICITATION NO.: W91328-XX-XXXX
	CHECKED BY: DF	CONTRACT NO.:
	SUBMITTED BY:	W91328-XX-XXXX
	SIZE:	

UNITED STATES ARMY RESERVE CENTER  
ORANGEBURG, NEW YORK

SHEET ID

ED102



0 4' 8' 16'

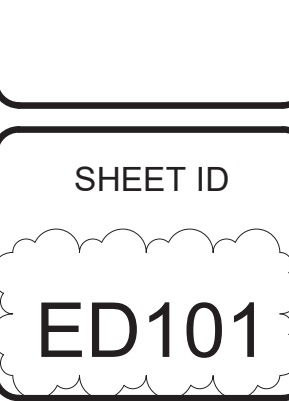
SCALE: 1/8"=1'-0"

1. FOR ADDITIONAL NOTES, SYMBOLS AND ABBREVIATIONS SEE DRAWING E-001.

2. FOR INFORMATION ON EXISTING CIRCUITRY SEE PANEL SCHEDULES ON DRAWINGS EP801 AND EP602.

3. CONTRACTOR SHALL DISCONNECT AND REMOVE ALL EXISTING ABOVE CEILING AND WALL MOUNTED HVAC EQUIPMENT. DISCONNECT AND REMOVE ALL EXISTING CONDUIT AND WIRE BACK TO POWER SOURCE.

- 7 EXISTING PANEL LP-LB TO BE DISCONNECTED AND REMOVED. DISCONNECT AND REMOVE ALL ASSOCIATED CONDUIT AND WIRE INCLUDING FEEDER CIRCUIT BACK TO MDP.
- 2 EXISTING PANEL PP-PA TO BE DISCONNECTED AND REMOVED. DISCONNECT AND REMOVE ALL ASSOCIATED CONDUIT AND WIRE, INCLUDING FEEDER CIRCUIT, BACK TO MDP.
- 3 EXISTING PANEL LP-LA TO BE DISCONNECTED AND REMOVED. DISCONNECT AND REMOVE ALL ASSOCIATED CONDUIT AND WIRE, INCLUDING FEEDER CIRCUIT, BACK TO EMERGENCY GENERATOR PANEL.
- 4 EXISTING PANEL PP-SI TO BE DISCONNECTED AND REMOVED. DISCONNECT AND REMOVE ALL ASSOCIATED CONDUIT AND WIRE.
- 5 FOR IT, TELEPHONE, SECURITY EQUIPMENT REMOVALS SEE COMMUNICATIONS DRAWINGS. CONTRACTOR SHALL REMOVE ALL ASSOCIATED CONDUIT AND WIRE.
- 6 NOT USED
- 7 LOCATION FOR INTERCOM COMMUNICATIONS AND POWER CONDUIT FOR TWO EXISTING EXTERIOR MOTOR OPERATED GATES. CONDUIT AND WIRE SHALL REMAIN ON BUILDING EXTERIOR. INTERCEPT EXISTING CONDUIT ON BUILDING INTERIOR AND PROVIDE FOR REQUIRED RECONNECTION. SEE DRAWING EP103 FOR CONTINUATION.
- 8 LOCATION OF CONDUIT AND WIRE RUN TO UNKNOWN EXTERIOR ELECTRICAL LOAD. CONTRACTOR SHALL TRACE OUT CIRCUIT AND RELOCATE AS NECESSARY TO ACCOMMODATE THE BUILDING RENOVATION CONTRACTOR SHALL REPOWER WITH NEW CIRCUIT(S). SEE DRAWING EP103 FOR CONTINUATION.



[illegible]

