[illegible]

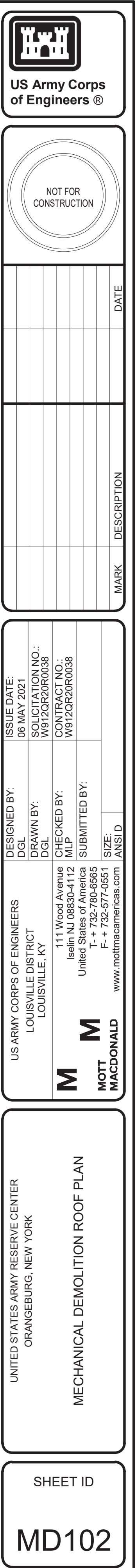
M	US ARMY CORPS OF ENGINEERS LOUISVILLE DISTRICT LOUISVILLE, KY	DESIGNED BY: DGL	ISSUE DATE: 06 MAY 2021
		DRAWN BY: DGL	SOLICITATION NO.: W912QR2R0038
M	111 Wood Avenue Iselin NJ 08830-4112 United States of America	CHECKED BY: M/LP	CONTRACT NO.: W912QR2R0038
MOTT		SUBMITTED BY:	

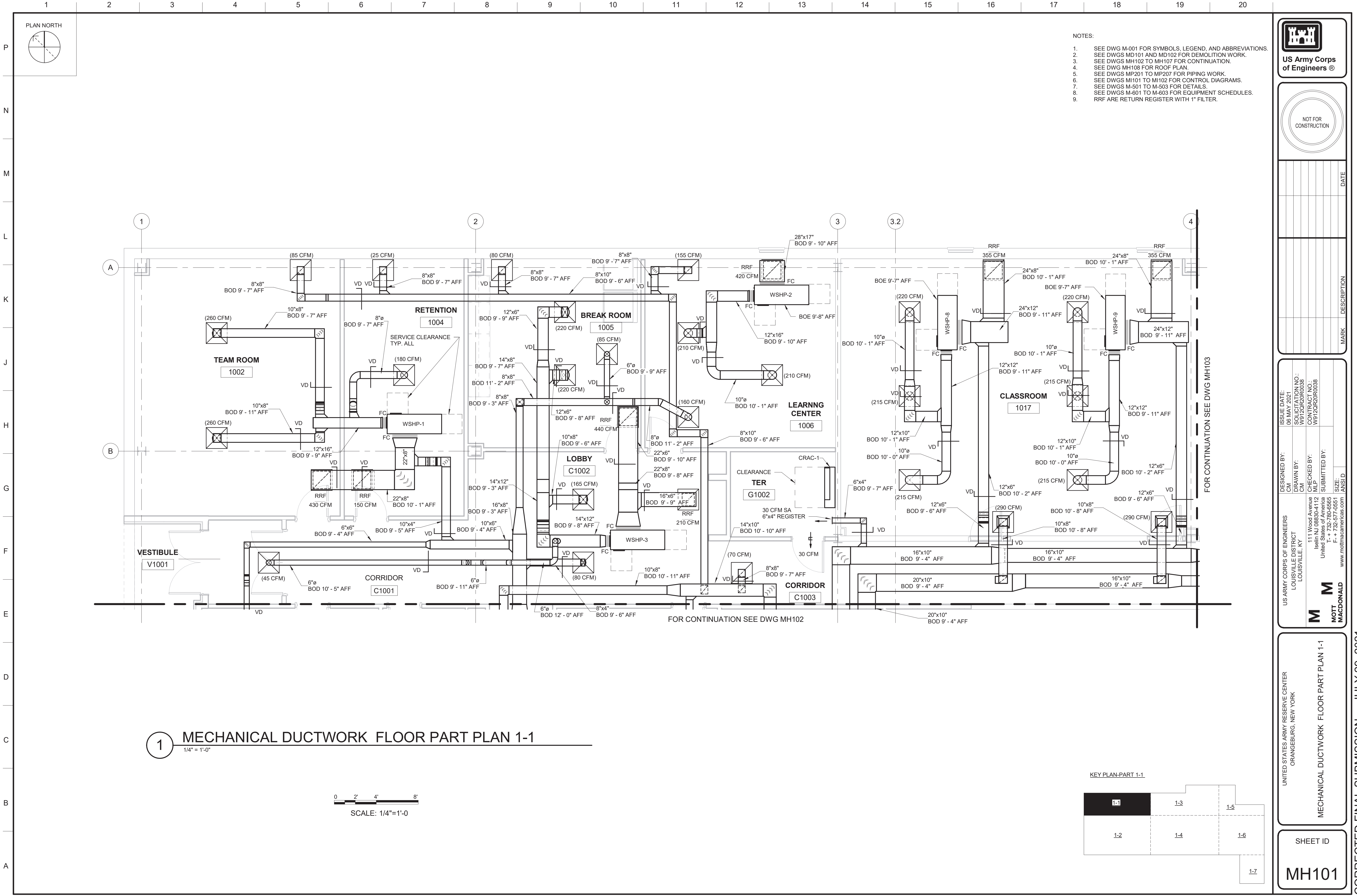
UNITED STATES ARMY RESERVE CENTER
ORANGEBURG, NEW YORK

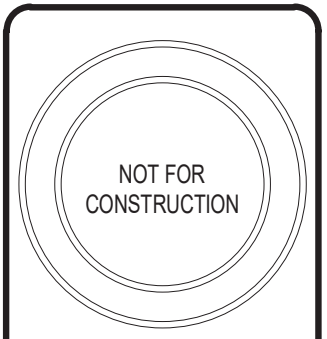
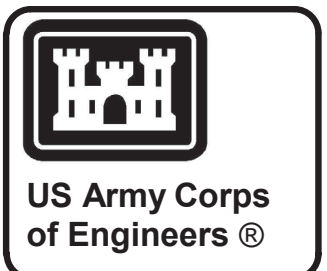
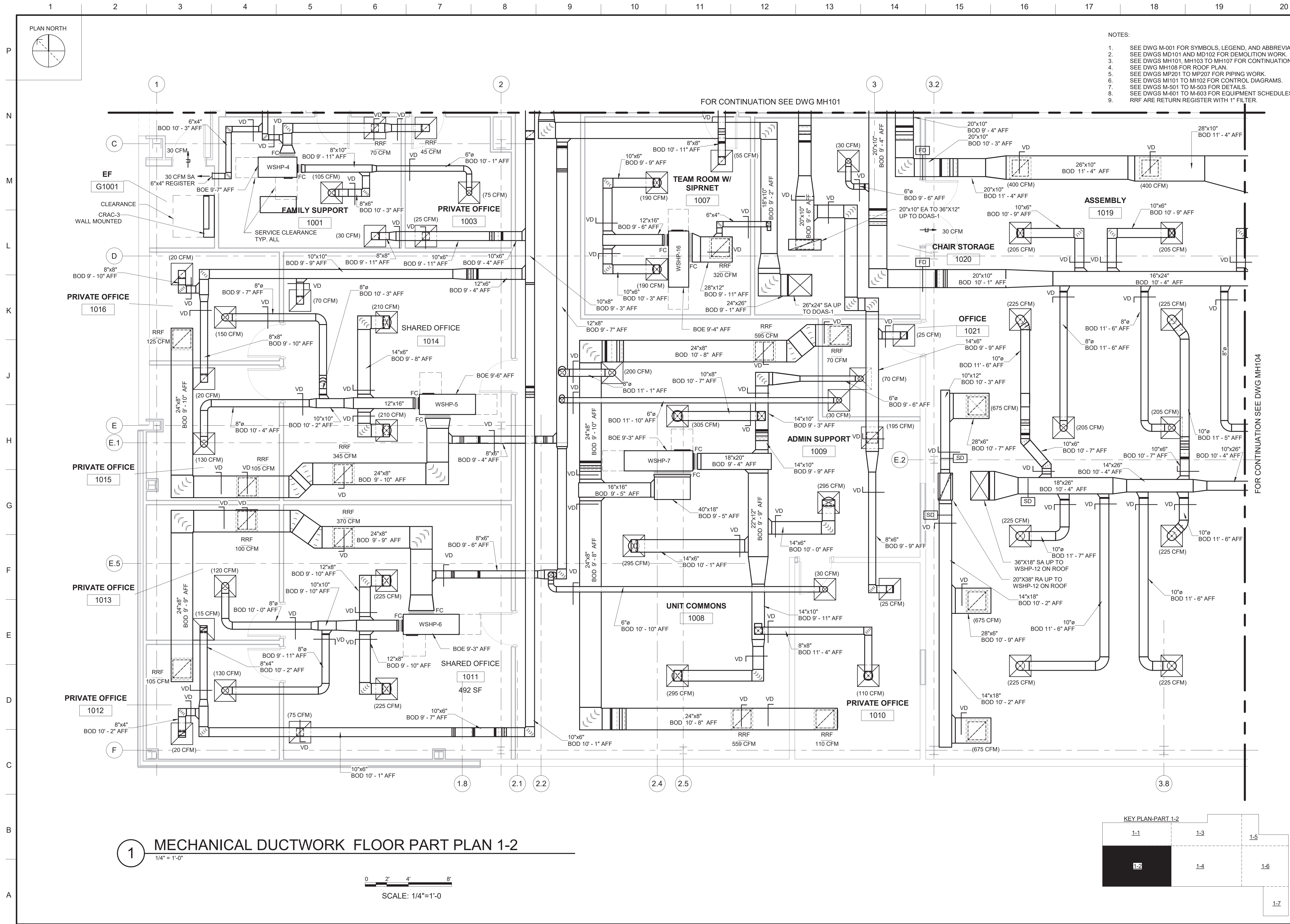
MECHANICAL LEVEL 1 DEMOLITION FLOOR PLAN

SHEET ID
MD101

CORRECTED FINAL SUBMISSION - JULY 29, 2021







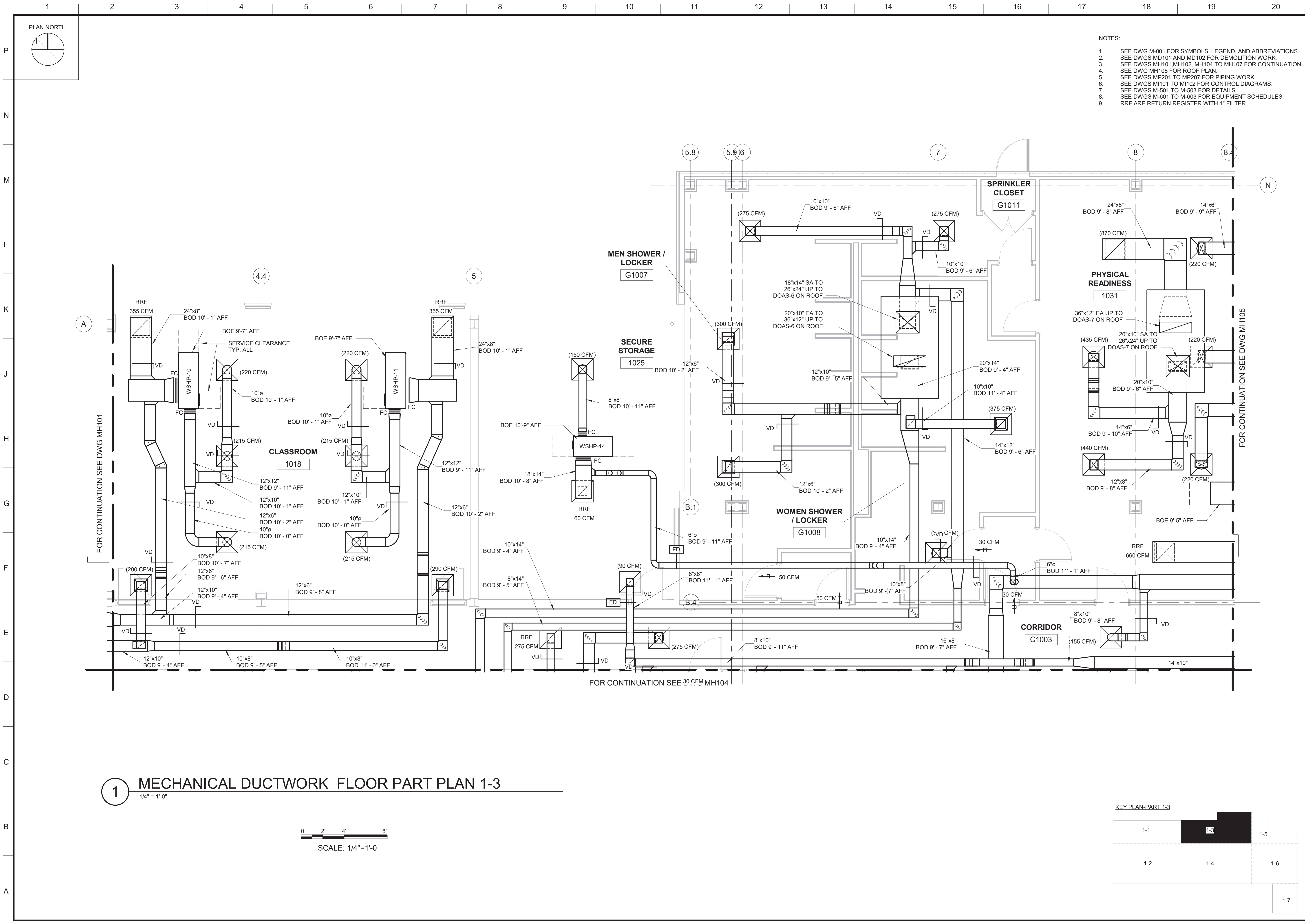
DATE	DESCRIPTION	MARK

ISSUE DATE: 06 MAY 2021	DESIGNED BY: CM	US ARMY CORPS OF ENGINEERS LOUISVILLE DISTRICT LOUISVILLE, KY
SOLICITATION NO.: W912QR2R038	DRAWN BY: CM	
CONTRACT NO.: W912QR2R038	CHECKED BY: MLP	
	SUBMITTED BY: ANSI D	
	SIZE: ANSI D	
		MOTT MACDONALD

UNITED STATES ARMY RESERVE CENTER ORANGEBURG, NEW YORK	MECHANICAL DUCTWORK FLOOR PART PLAN 1-2
---	---

SHEET ID MH102

CORRECTED FINAL SUBMISSION - JULY 29, 2021





US Army Corps
of Engineers®

NOT FOR
CONSTRUCTION

DATE	DESCRIPTION	MARK

ISSUE DATE:
06 MAY 2021

DESIGNED BY:
CM

DRAWN BY:
CM

CHECKED BY:
MJP

SUBMITTED BY:
ANSID

SIZE:
ANSID

US ARMY CORPS OF ENGINEERS
LOUISVILLE DISTRICT
LOUISVILLE, KY

111 Wood Avenue
Iselin, NJ 08830-4112
United States of America
T + 732-780-0555
F + 732-577-0551
www.motmacdonald.com

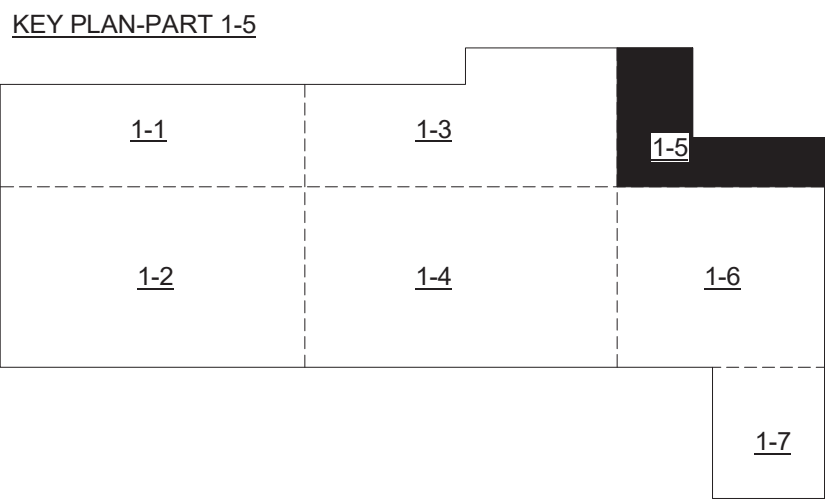
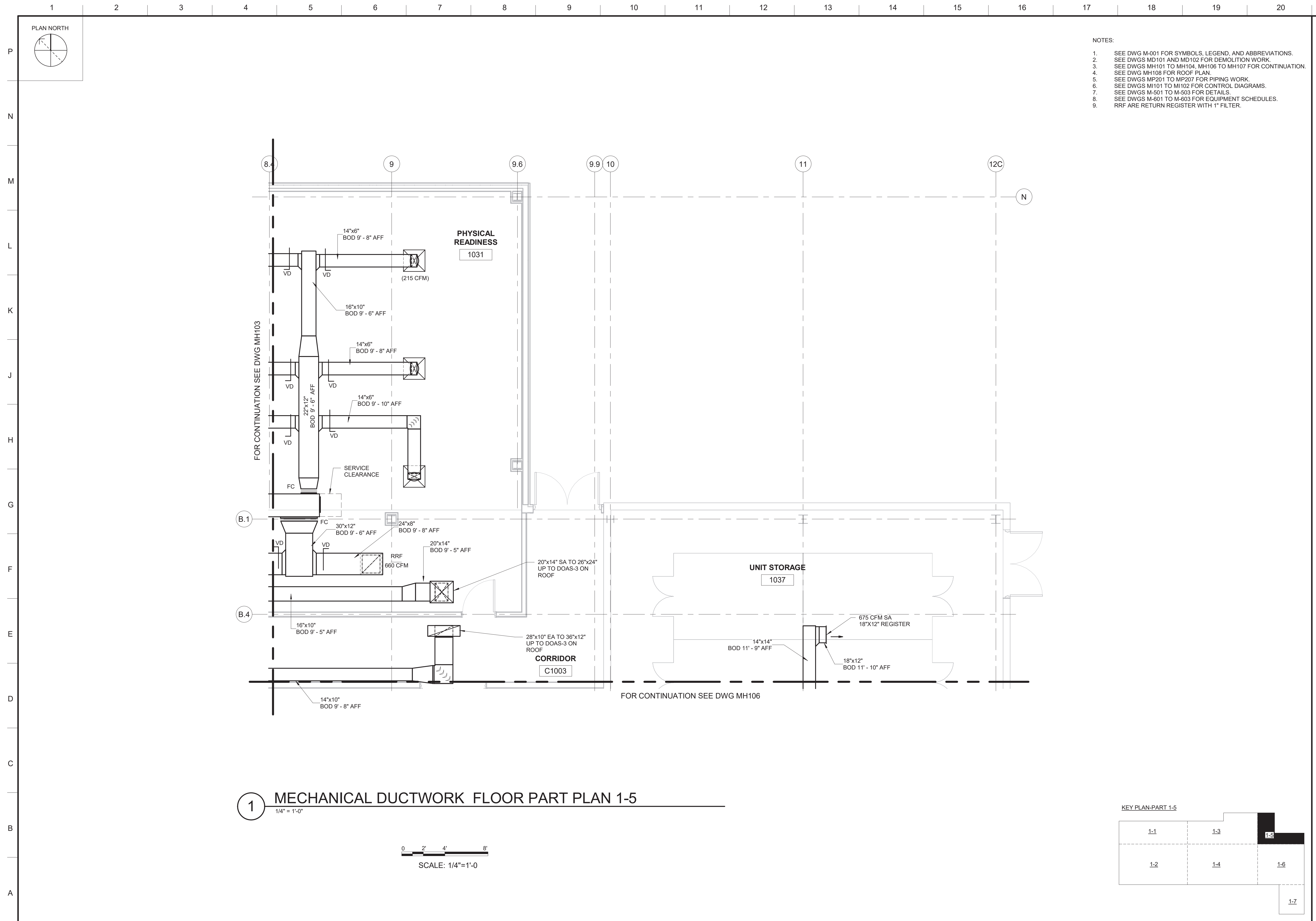
M
MOTT
MACDONALD

UNITED STATES ARMY RESERVE CENTER
ORANGEBURG, NEW YORK

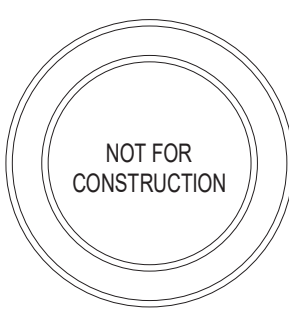
MECHANICAL DUCTWORK FLOOR PART PLAN 1-3

SHEET ID

MH103



US Army Corps
of Engineers ®

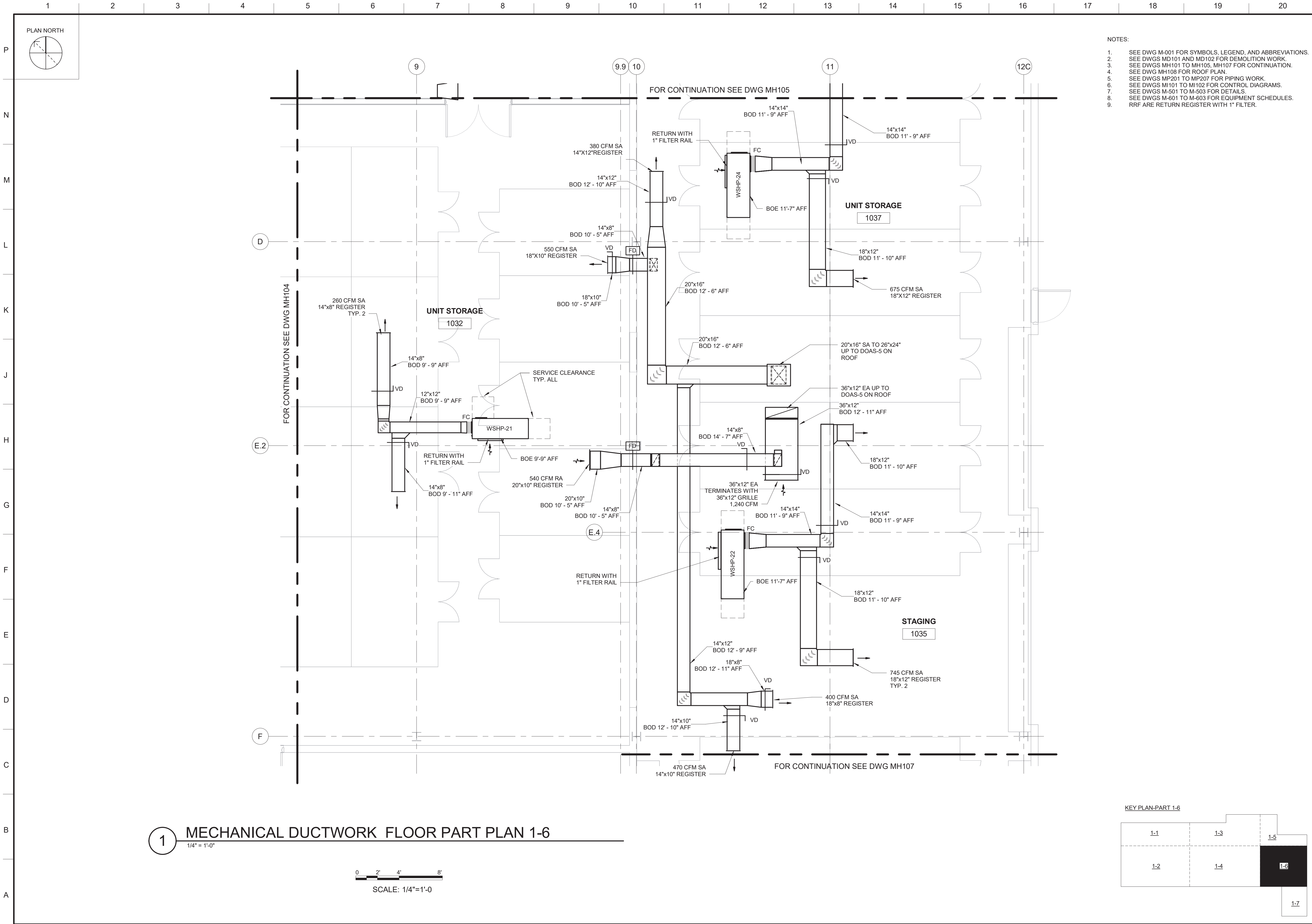
[illegible]


M	US ARMY CORPS OF ENGINEERS LOUISVILLE DISTRICT LOUISVILLE, KY	DESIGNED BY:	ISSUE DATE:
		CM	06 MAY 2021
M	111 Wood Avenue Iselin NJ 08830-4112 United States of America MLP T + 732-790-6565 F + 732-577-4551	DRAWN BY:	SOLUTION NO.:
		CM	901-000003
MOTT MACDONALD		CHECKED BY:	CONTRACT NO.:
		MLP	W91QR2QR0038
		SIZE:	

UNITED STATES ARMY RESERVE CENTER
ORANGEBURG, NEW YORK

SHEET ID

MH105





US Army Corps
of Engineers®

NOT FOR
CONSTRUCTION

DATE	DESCRIPTION	MARK

ISSUE DATE:
06 MAY 2021

DESIGNED BY:
CM

DRAWN BY:
CM

CHECKED BY:
MLP

SUBMITTED BY:
ANSI D

SIZE:
ANSI D

US ARMY CORPS OF ENGINEERS
LOUISVILLE DISTRICT
LOUISVILLE, KY

111 Wood Avenue
Iselin, NJ 08830-4112
United States of America
T. + 732-780-0555
F. + 732-577-0551
www.mottmacdonald.com

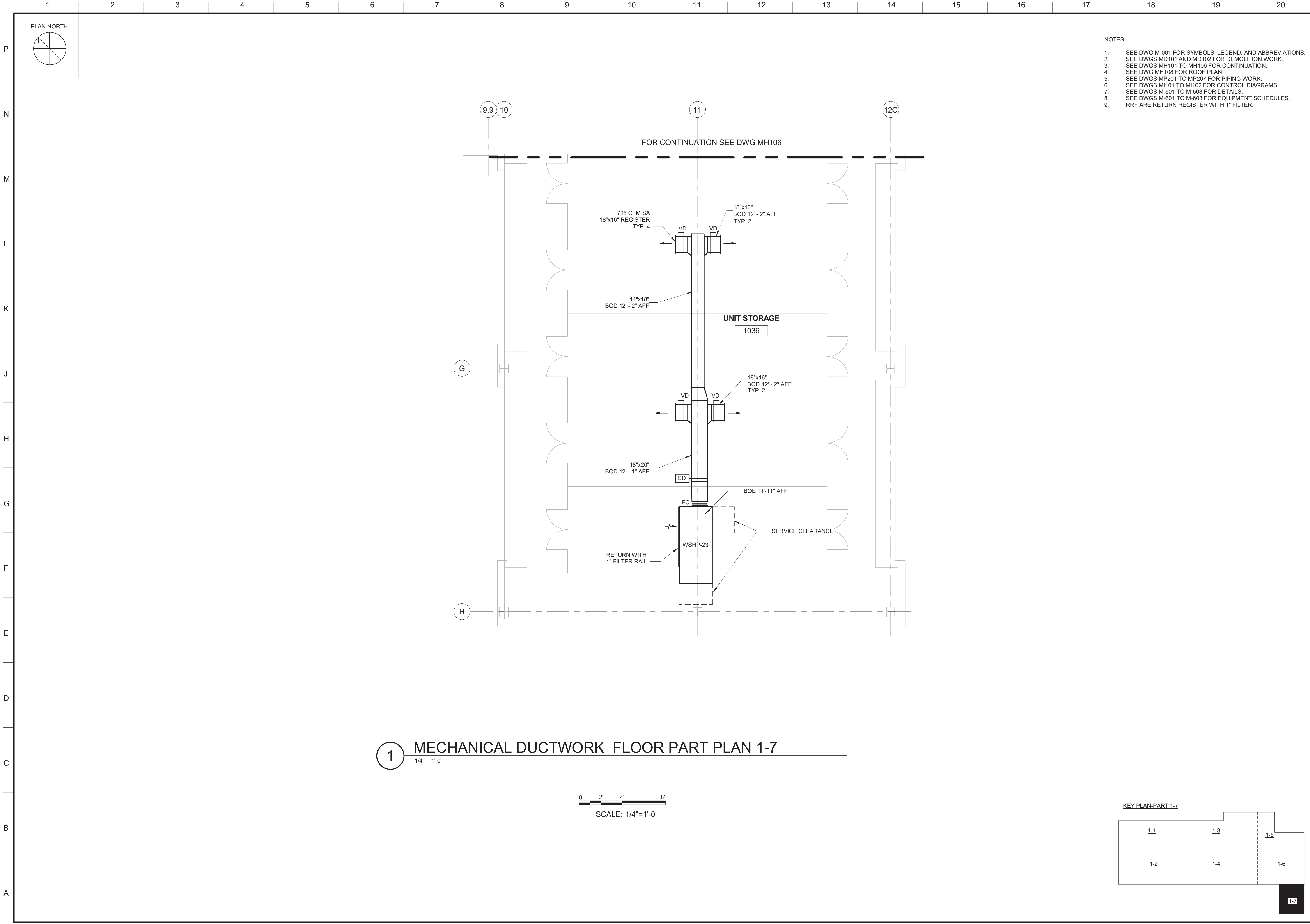
M
MOTT
MACDONALD

UNITED STATES ARMY RESERVE CENTER
ORANGEBURG, NEW YORK

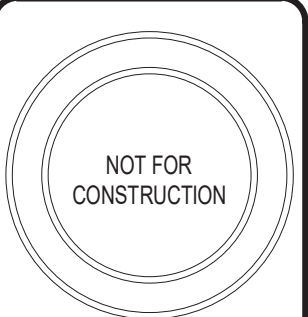
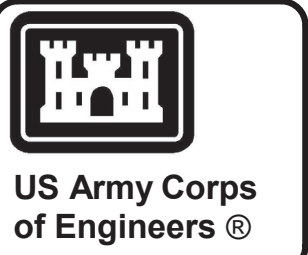
MECHANICAL DUCTWORK FLOOR PART PLAN 1-6

SHEET ID

MH106



- NOTES:
- SEE DWG M-001 FOR SYMBOLS, LEGEND, AND ABBREVIATIONS.
 - SEE DWGS MD101 AND MD102 FOR DEMOLITION WORK.
 - SEE DWGS MH101 TO MH106 FOR CONTINUATION.
 - SEE DWG MH108 FOR ROOF PLAN.
 - SEE DWGS MP201 TO MP207 FOR PIPING WORK.
 - SEE DWGS MI101 TO MI102 FOR CONTROL DIAGRAMS.
 - SEE DWGS M-501 TO M-503 FOR DETAILS.
 - SEE DWGS M-601 TO M-603 FOR EQUIPMENT SCHEDULES.
 - RRF ARE RETURN REGISTER WITH 1" FILTER.



MARK	DESCRIPTION	DATE

US ARMY CORPS OF ENGINEERS
LOUISVILLE DISTRICT
LOUISVILLE, KY

111 Wood Avenue
Iselin, NJ 08830-4112
United States of America
T. + 732-780-0565
F. + 732-577-0551
www.mottmacdonald.com

MOTT
MACDONALD

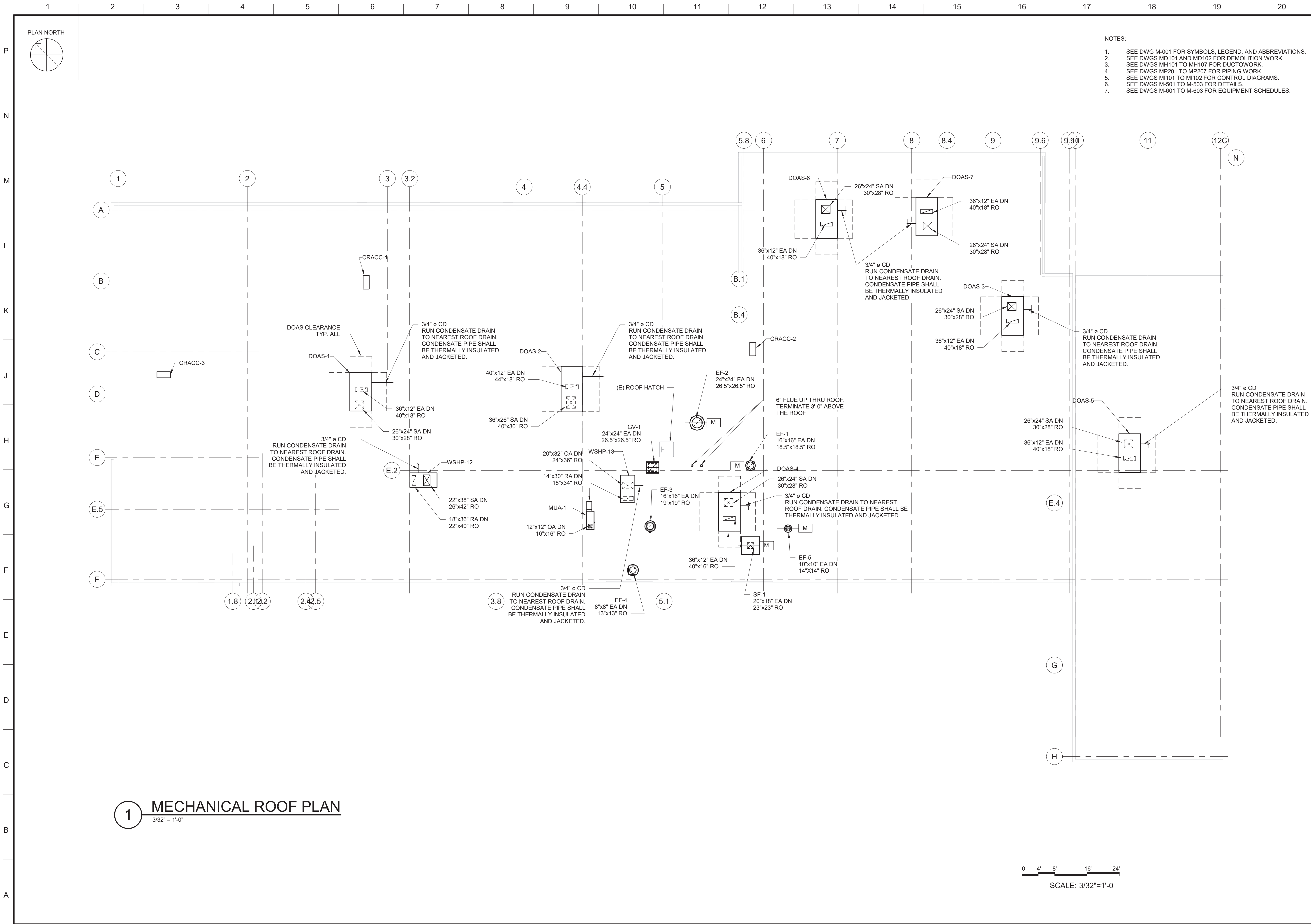
DESIGNED BY: CM	ISSUE DATE: 06 MAY 2021
DRAWN BY: CM	SOLICITATION NO.: W912QR20R0038
CHECKED BY: MLP	CONTRACT NO.: W912QR20R0038
SUBMITTED BY:	SIZE: ANSI D

UNITED STATES ARMY RESERVE CENTER
ORANGEBURG, NEW YORK

MECHANICAL DUCTWORK FLOOR PART PLAN 1-7

SHEET ID

MH107



US Army Corps
of Engineers®

NOT FOR
CONSTRUCTION

DATE	DESCRIPTION	MARK

ISSUE DATE:	DESIGNED BY:	US ARMY CORPS OF ENGINEERS
06 MAY 2021	CM	LOUISVILLE DISTRICT
SOLICITATION NO.: W912QR20R0038	DRAWN BY: CM	LOUISVILLE, KY
CONTRACT NO.: W912QR20R0038	CHECKED BY: MJP	111 Wood Avenue Iselin, NJ 08830-4112 United States of America T: + 732-577-0656 F: + 732-577-0651 www.mottmacdonald.com
	SUBMITTED BY: ANSID	

MOTT
MACDONALD

UNITED STATES ARMY RESERVE CENTER
ORANGEBURG, NEW YORK

MECHANICAL ROOF PLAN

SHEET ID

MH108

CORRECTED FINAL SUBMISSION - JULY 29, 2021