

- NOTES:
- SEE DWG M-001 FOR SYMBOLS, LEGEND, AND ABBREVIATIONS.
  - SEE DWGS MD101 AND MD102 FOR DEMOLITION WORK.
  - SEE DWGS MH101 TO MH107 FOR CONTINUATION.
  - SEE DWG MH108 FOR ROOF PLAN.
  - SEE DWGS MP202 TO MP207 FOR CONTINUATION.
  - SEE DWGS MI101 TO MI102 FOR CONTROL DIAGRAMS.
  - SEE DWGS M-501 TO M-503 FOR DETAILS.
  - SEE DWGS M-601 TO M-603 FOR EQUIPMENT SCHEDULES.
  - PROVIDE SHUTOFF VALVES AT ALL WATER SUPPLY AND RETURN PIPE BRANCHES. THE SHUTOFF VALVES ARE NOT SHOWN ON THE FLOOR PLAN FOR CLARITY.
  - THE CONTROL VALVE, SHUTOFF VALVES, STRAINER, DRAIN VALVE TOR EACH ROOF MOUNTED DOAS UNIT SHALL BE LOCATED BELOW THE ROOF IN A CLOSE PROXIMITY OF THE CORRESPONDING UNIT.
  - ALL CONDENSER WATER PIPES SHALL BE INSULATED AND JACKETED.
  - FOR ALL CONDENSATE DRAIN PIPES, PROVIDE CLEANOUTS AT EACH 90 DEGREE ELBOWS. PROVIDE CLEANOUTS EVERY 30 FEET ON THE STRAIGHT RUNS.
  - PROVIDE 1/4" PER FOOT SLOPE FOR THE CONDENSATE DRAIN PIPES. PITCH PIPE DOWN IN DIRECTION OF FLOW AS SHOWN ON THE DRAWING

**US Army Corps of Engineers®**

NOT FOR CONSTRUCTION

DATE	DESCRIPTION	MARK

ISSUE DATE: 06 MAY 2021  
SOLICITATION NO.: W912Q2R0R038  
CONTRACT NO.: W912Q2R0R038

DESIGNED BY: DGL  
DRAWN BY: DGL  
CHECKED BY: MLP  
SUBMITTED BY: ANSID

SIZE: ANSID

US ARMY CORPS OF ENGINEERS  
LOUISVILLE DISTRICT  
LOUISVILLE, KY

111 Wood Avenue  
Iselin, NJ 08830-4112  
United States of America  
T + 732-577-0651  
F + 732-577-0651  
www.mottmacdonald.com

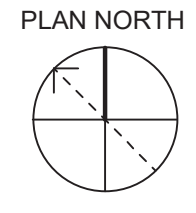
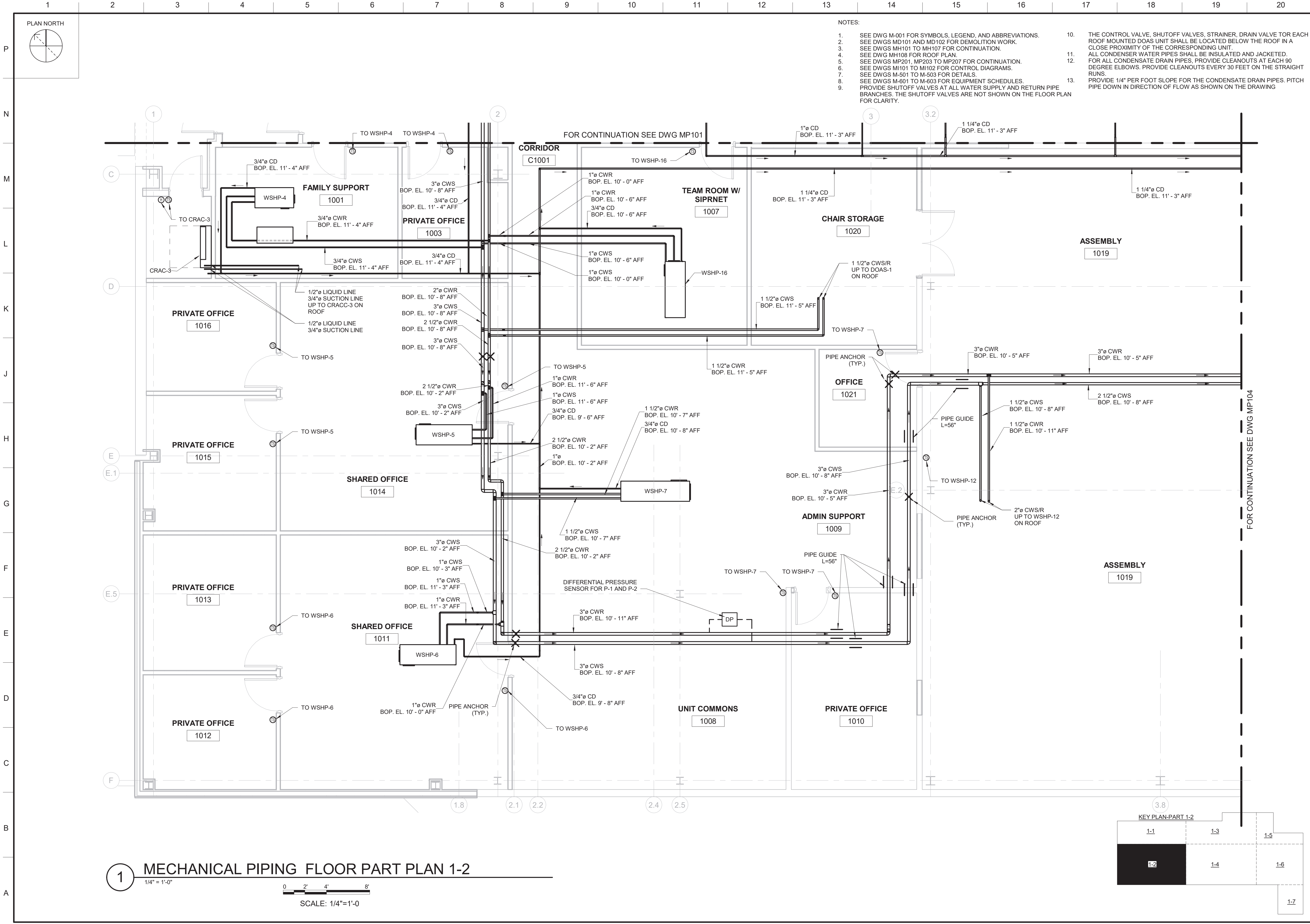
**MOTT MACDONALD**

UNITED STATES ARMY RESERVE CENTER  
ORANGEBURG, NEW YORK

MECHANICAL PIPING FLOOR PART PLAN 1-1

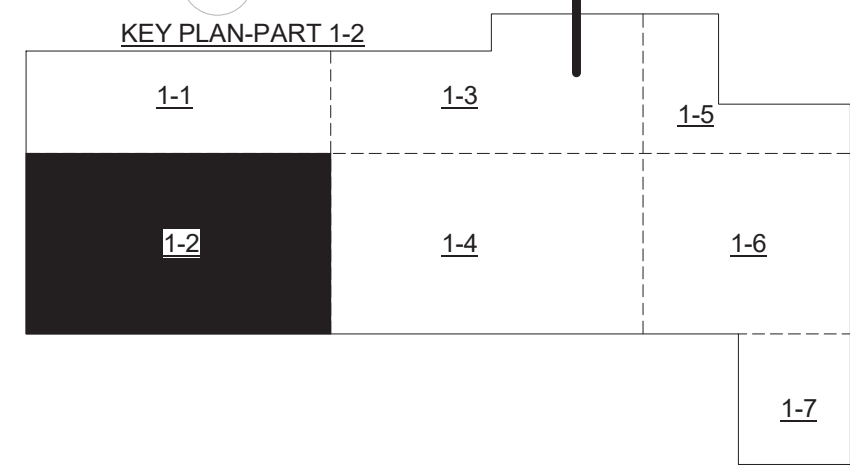
SHEET ID

**MP101**



- NOTES:
- SEE DWG M-001 FOR SYMBOLS, LEGEND, AND ABBREVIATIONS.
  - SEE DWGS MD101 AND MD102 FOR DEMOLITION WORK.
  - SEE DWGS MH101 TO MH107 FOR CONTINUATION.
  - SEE DWG MH108 FOR ROOF PLAN.
  - SEE DWGS MP201, MP203 TO MP207 FOR CONTINUATION.
  - SEE DWGS MI101 TO MI102 FOR CONTROL DIAGRAMS.
  - SEE DWGS M-501 TO M-503 FOR DETAILS.
  - SEE DWGS M-601 TO M-603 FOR EQUIPMENT SCHEDULES.
  - PROVIDE SHUTOFF VALVES AT ALL WATER SUPPLY AND RETURN PIPE BRANCHES. THE SHUTOFF VALVES ARE NOT SHOWN ON THE FLOOR PLAN FOR CLARITY.
  - THE CONTROL VALVE, SHUTOFF VALVES, STRAINER, DRAIN VALVE TOR EACH ROOF MOUNTED DOAS UNIT SHALL BE LOCATED BELOW THE ROOF IN A CLOSE PROXIMITY OF THE CORRESPONDING UNIT.
  - ALL CONDENSER WATER PIPES SHALL BE INSULATED AND JACKETED.
  - FOR ALL CONDENSATE DRAIN PIPES, PROVIDE CLEANOUTS AT EACH 90 DEGREE ELBOWS. PROVIDE CLEANOUTS EVERY 30 FEET ON THE STRAIGHT RUNS.
  - PROVIDE 1/4" PER FOOT SLOPE FOR THE CONDENSATE DRAIN PIPES. PITCH PIPE DOWN IN DIRECTION OF FLOW AS SHOWN ON THE DRAWING

**1 MECHANICAL PIPING FLOOR PART PLAN 1-2**  
1/4" = 1'-0"  
0 2' 4' 8'  
SCALE: 1/4"=1'-0



**US Army Corps of Engineers®**

NOT FOR CONSTRUCTION

DATE	DESCRIPTION	MARK

ISSUE DATE: 06 MAY 2021  
SOLICITATION NO.: W912Q2R0R0038  
CONTRACT NO.: W912Q2R0R0038

DESIGNED BY: DGL  
DRAWN BY: DGL  
CHECKED BY: MJP  
SUBMITTED BY: ANSID

US ARMY CORPS OF ENGINEERS  
LOUISVILLE DISTRICT  
LOUISVILLE, KY

111 Wood Avenue  
Iselin NJ 08830-4112  
United States of America  
T. + 732-577-0651  
www.mottmacdonald.com

**MOTT MACDONALD**

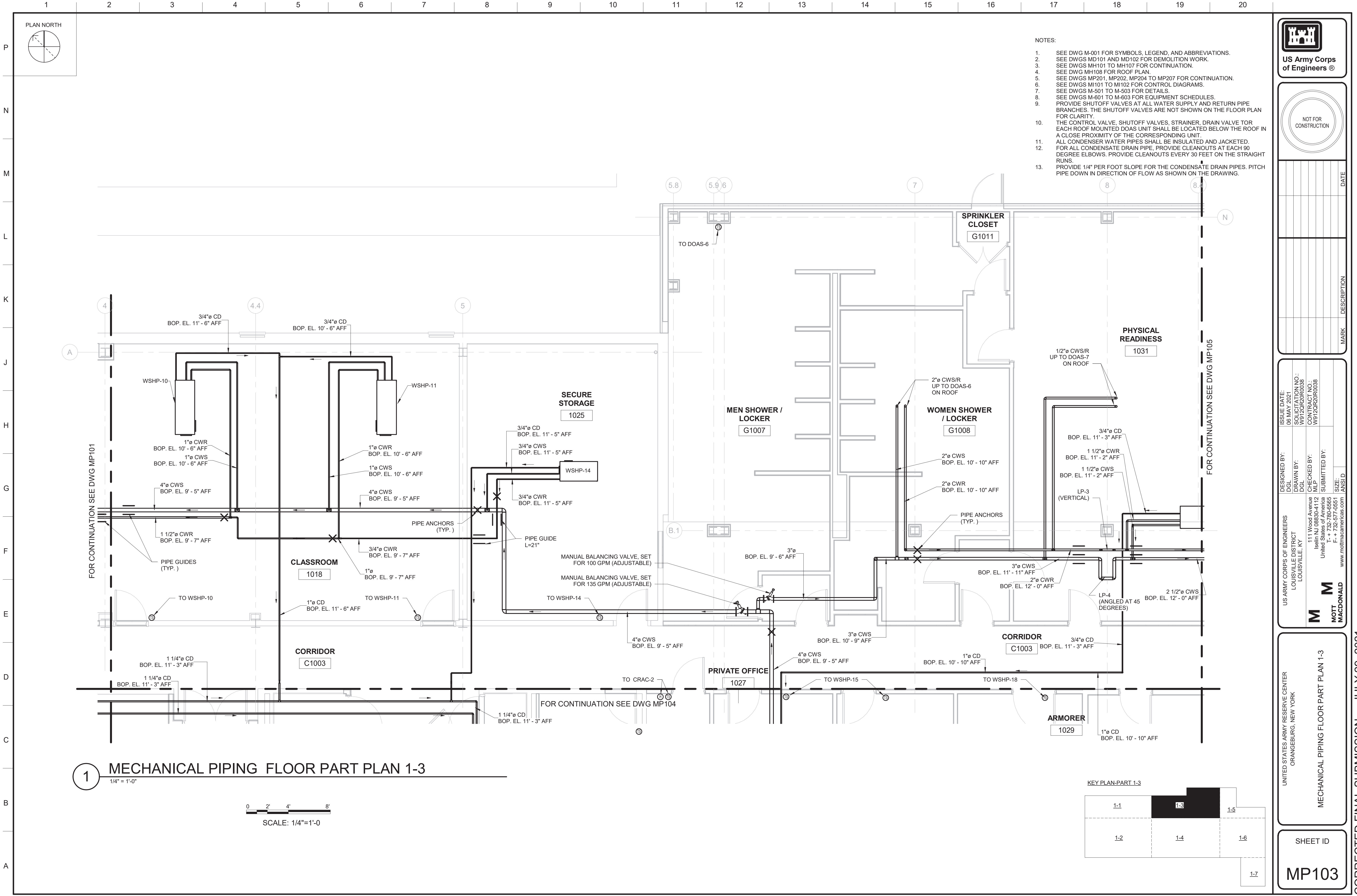
UNITED STATES ARMY RESERVE CENTER  
ORANGEBURG, NEW YORK

MECHANICAL PIPING FLOOR PART PLAN 1-2

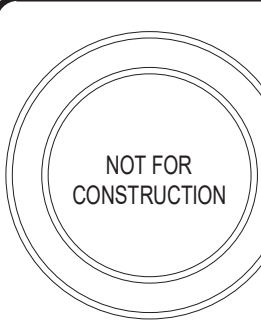
SHEET ID

**MP102**





- NOTES:
- SEE DWG M-001 FOR SYMBOLS, LEGEND, AND ABBREVIATIONS.
  - SEE DWGS MD101 AND MD102 FOR DEMOLITION WORK.
  - SEE DWGS MH101 TO MH107 FOR CONTINUATION.
  - SEE DWG MH108 FOR ROOF PLAN.
  - SEE DWGS MP201, MP202, MP204 TO MP207 FOR CONTINUATION.
  - SEE DWGS MI101 TO MI102 FOR CONTROL DIAGRAMS.
  - SEE DWGS M-501 TO M-503 FOR DETAILS.
  - SEE DWGS M-601 TO M-603 FOR EQUIPMENT SCHEDULES.
  - PROVIDE SHUTOFF VALVES AT ALL WATER SUPPLY AND RETURN PIPE BRANCHES. THE SHUTOFF VALVES ARE NOT SHOWN ON THE FLOOR PLAN FOR CLARITY.
  - THE CONTROL VALVE, SHUTOFF VALVES, STRAINER, DRAIN VALVE TOR EACH ROOF MOUNTED DOAS UNIT SHALL BE LOCATED BELOW THE ROOF IN A CLOSE PROXIMITY OF THE CORRESPONDING UNIT.
  - ALL CONDENSER WATER PIPES SHALL BE INSULATED AND JACKETED.
  - FOR ALL CONDENSATE DRAIN PIPE, PROVIDE CLEANOUTS AT EACH 90 DEGREE ELBOWS. PROVIDE CLEANOUTS EVERY 30 FEET ON THE STRAIGHT RUNS.
  - PROVIDE 1/4" PER FOOT SLOPE FOR THE CONDENSATE DRAIN PIPES. PITCH PIPE DOWN IN DIRECTION OF FLOW AS SHOWN ON THE DRAWING.



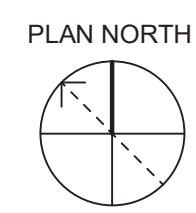
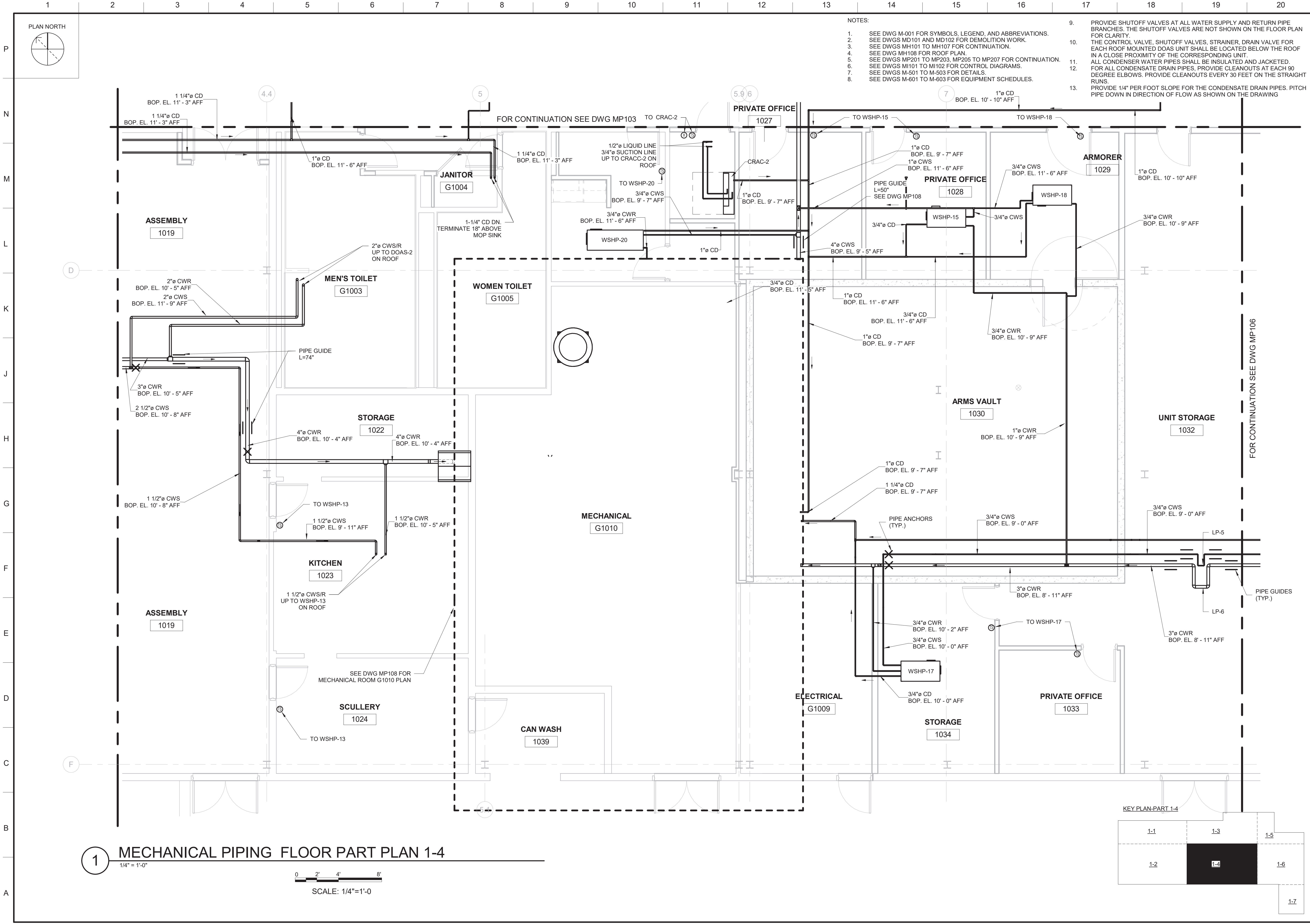
DATE
DESCRIPTION
MARK

ISSUE DATE: 06 MAY 2021	DESIGNED BY: DGL	US ARMY CORPS OF ENGINEERS LOUISVILLE DISTRICT LOUISVILLE, KY
SOLICITATION NO.: W912QR2R0038	DRAWN BY: DGL	111 Wood Avenue Iselin, NJ 08830-4112 United States of America T + 732-577-0551 F + 732-577-0551 www.mottmacdonald.com
CONTRACT NO.: W912QR2R0038	CHECKED BY: MLP	<b>M</b> <b>MOTT</b> <b>MACDONALD</b>
	SUBMITTED BY:	
	SIZE: ANSI D	

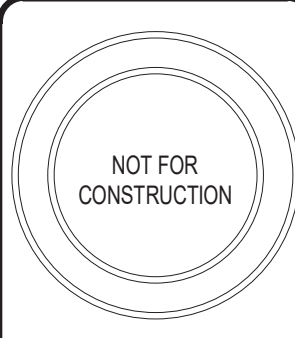
UNITED STATES ARMY RESERVE CENTER ORANGEBURG, NEW YORK	MECHANICAL PIPING FLOOR PART PLAN 1-3
---	---------------------------------------

SHEET ID
MP103

CORRECTED FINAL SUBMISSION - JULY 29, 2021



- NOTES:
- SEE DWG M-001 FOR SYMBOLS, LEGEND, AND ABBREVIATIONS.
  - SEE DWGS MD101 AND MD102 FOR DEMOLITION WORK.
  - SEE DWGS MH101 TO MH107 FOR CONTINUATION.
  - SEE DWG MH108 FOR ROOF PLAN.
  - SEE DWGS MP201 TO MP203, MP205 TO MP207 FOR CONTINUATION.
  - SEE DWGS MP101 TO MP102 FOR CONTROL DIAGRAMS.
  - SEE DWGS M-501 TO M-503 FOR DETAILS.
  - SEE DWGS M-601 TO M-603 FOR EQUIPMENT SCHEDULES.
  - PROVIDE SHUTOFF VALVES AT ALL WATER SUPPLY AND RETURN PIPE BRANCHES. THE SHUTOFF VALVES ARE NOT SHOWN ON THE FLOOR PLAN FOR CLARITY.
  - THE CONTROL VALVE, SHUTOFF VALVES, STRAINER, DRAIN VALVE FOR EACH ROOF MOUNTED DOAS UNIT SHALL BE LOCATED BELOW THE ROOF IN A CLOSE PROXIMITY OF THE CORRESPONDING UNIT.
  - ALL CONDENSATE WATER PIPES SHALL BE INSULATED AND JACKETED. FOR ALL CONDENSATE DRAIN PIPES, PROVIDE CLEANOUTS AT EACH 90 DEGREE ELBOWS. PROVIDE CLEANOUTS EVERY 30 FEET ON THE STRAIGHT RUNS.
  - PROVIDE 1/4" PER FOOT SLOPE FOR THE CONDENSATE DRAIN PIPES. PITCH PIPE DOWN IN DIRECTION OF FLOW AS SHOWN ON THE DRAWING



DATE
DESCRIPTION
MARK

ISSUE DATE: 06 MAY 2021	DESIGNED BY: DGL	US ARMY CORPS OF ENGINEERS LOUISVILLE DISTRICT LOUISVILLE, KY
SOLICITATION NO.: W912QR20R0038	DRAWN BY: DGL	111 Wood Avenue Iselin, NJ 08830-4112 United States of America T. + 732-780-0555 F. + 732-577-0551 www.mottmacdonald.com
CONTRACT NO.: W912QR20R0038	CHECKED BY: MLP	
	SUBMITTED BY: ANSID	

**MOTT MACDONALD**

UNITED STATES ARMY RESERVE CENTER  
ORANGEBURG, NEW YORK

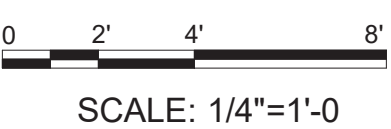
MECHANICAL PIPING FLOOR PLAN 1-4

SHEET ID

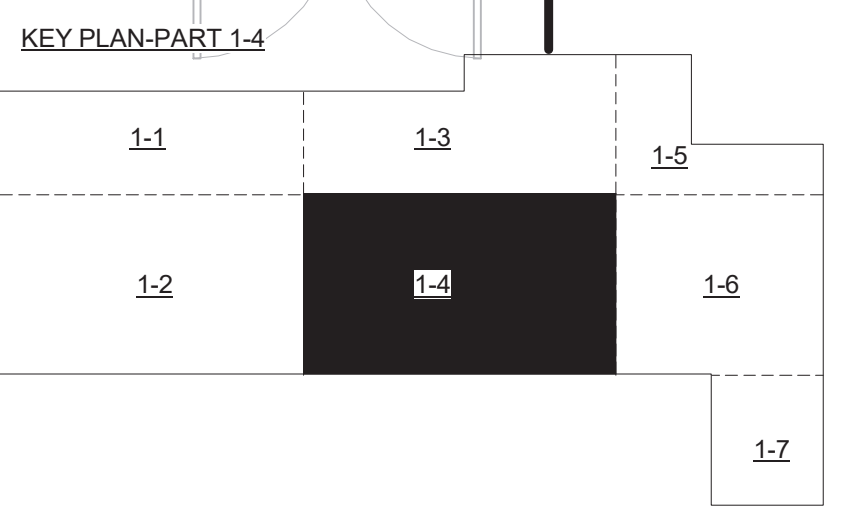
**MP104**

**1 MECHANICAL PIPING FLOOR PART PLAN 1-4**

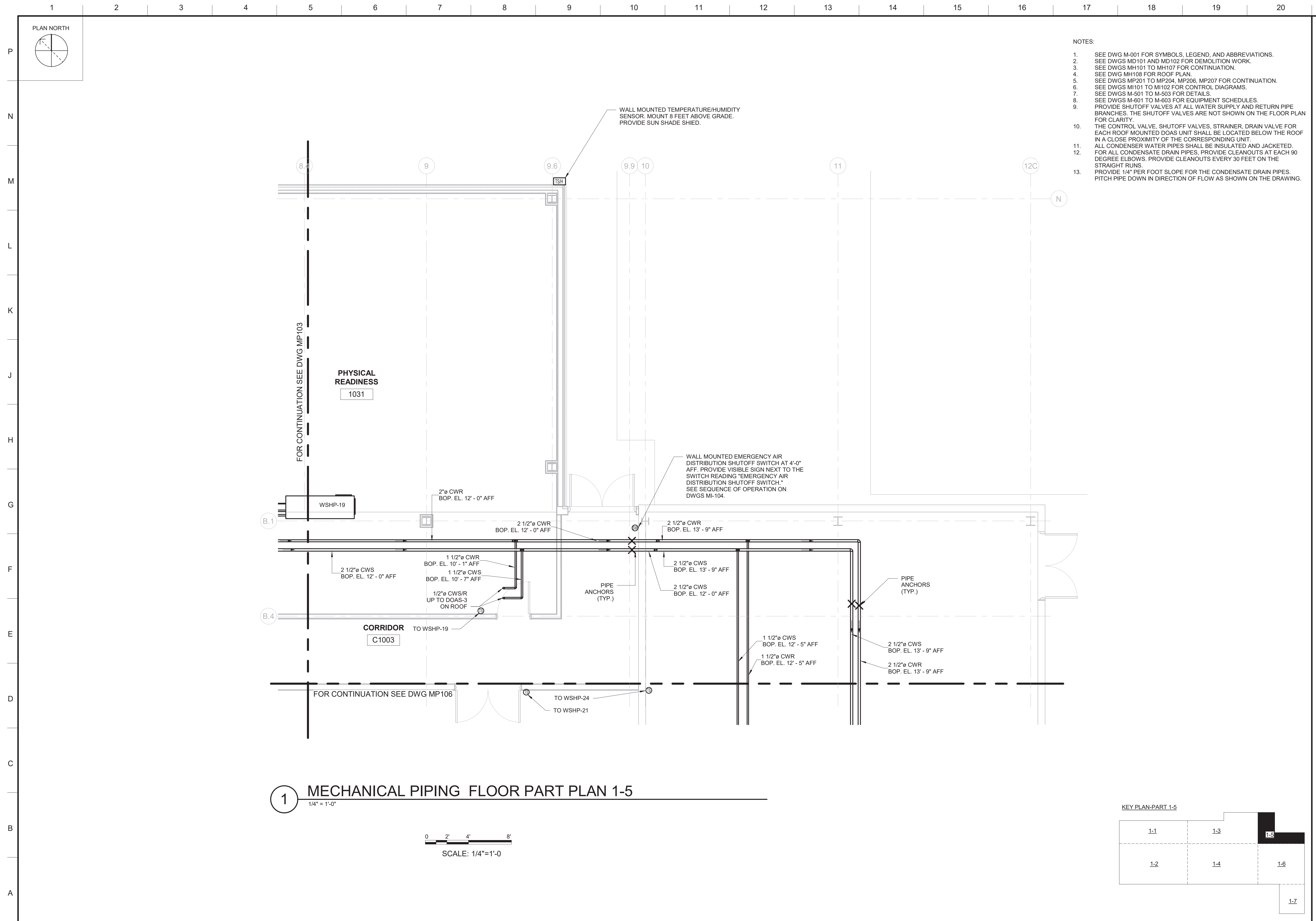
1/4" = 1'-0"



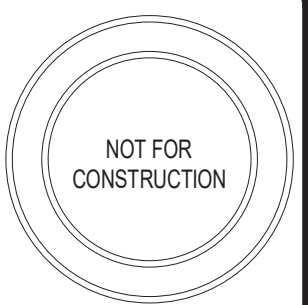
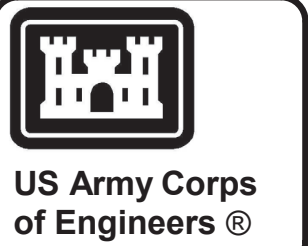
SCALE: 1/4"=1'-0"







- NOTES:
1. SEE DWG M-001 FOR SYMBOLS, LEGEND, AND ABBREVIATIONS.
  2. SEE DWGS MD101 AND MD102 FOR DEMOLITION WORK.
  3. SEE DWGS MH101 TO MH107 FOR CONTINUATION.
  4. SEE DWG MH108 FOR ROOF PLAN.
  5. SEE DWGS MP201 TO MP204, MP206, MP207 FOR CONTINUATION.
  6. SEE DWGS MI101 TO MI102 FOR CONTROL DIAGRAMS.
  7. SEE DWGS M-501 TO M-503 FOR DETAILS.
  8. SEE DWGS M-601 TO M-603 FOR EQUIPMENT SCHEDULES.
  9. PROVIDE SHUTOFF VALVES AT ALL WATER SUPPLY AND RETURN PIPE BRANCHES. THE SHUTOFF VALVES ARE NOT SHOWN ON THE FLOOR PLAN FOR CLARITY.
  10. THE CONTROL VALVE, SHUTOFF VALVES, STRAINER, DRAIN VALVE FOR EACH ROOF MOUNTED DOAS UNIT SHALL BE LOCATED BELOW THE ROOF IN A CLOSE PROXIMITY OF THE CORRESPONDING UNIT.
  11. ALL CONDENSER WATER PIPES SHALL BE INSULATED AND JACKETED.
  12. FOR ALL CONDENSATE DRAIN PIPES, PROVIDE CLEANOUTS AT EACH 90 DEGREE ELBOWS. PROVIDE CLEANOUTS EVERY 30 FEET ON THE STRAIGHT RUNS.
  13. PROVIDE 1/4" PER FOOT SLOPE FOR THE CONDENSATE DRAIN PIPES. PITCH PIPE DOWN IN DIRECTION OF FLOW AS SHOWN ON THE DRAWING.

[illegible]

**M** 111 Wood Avenue  
Iselin NJ 08830-4112  
United States of America  
Tel: +1-201-991-1000  
Fax: +1-201-991-1001  
www.mottmacdonald.com

**MOTT  
MACDONALD**

DESIGNED BY: DGL  
DRAWN BY: DGL  
CHECKED BY: MJP  
SUBMITTED BY: MJP

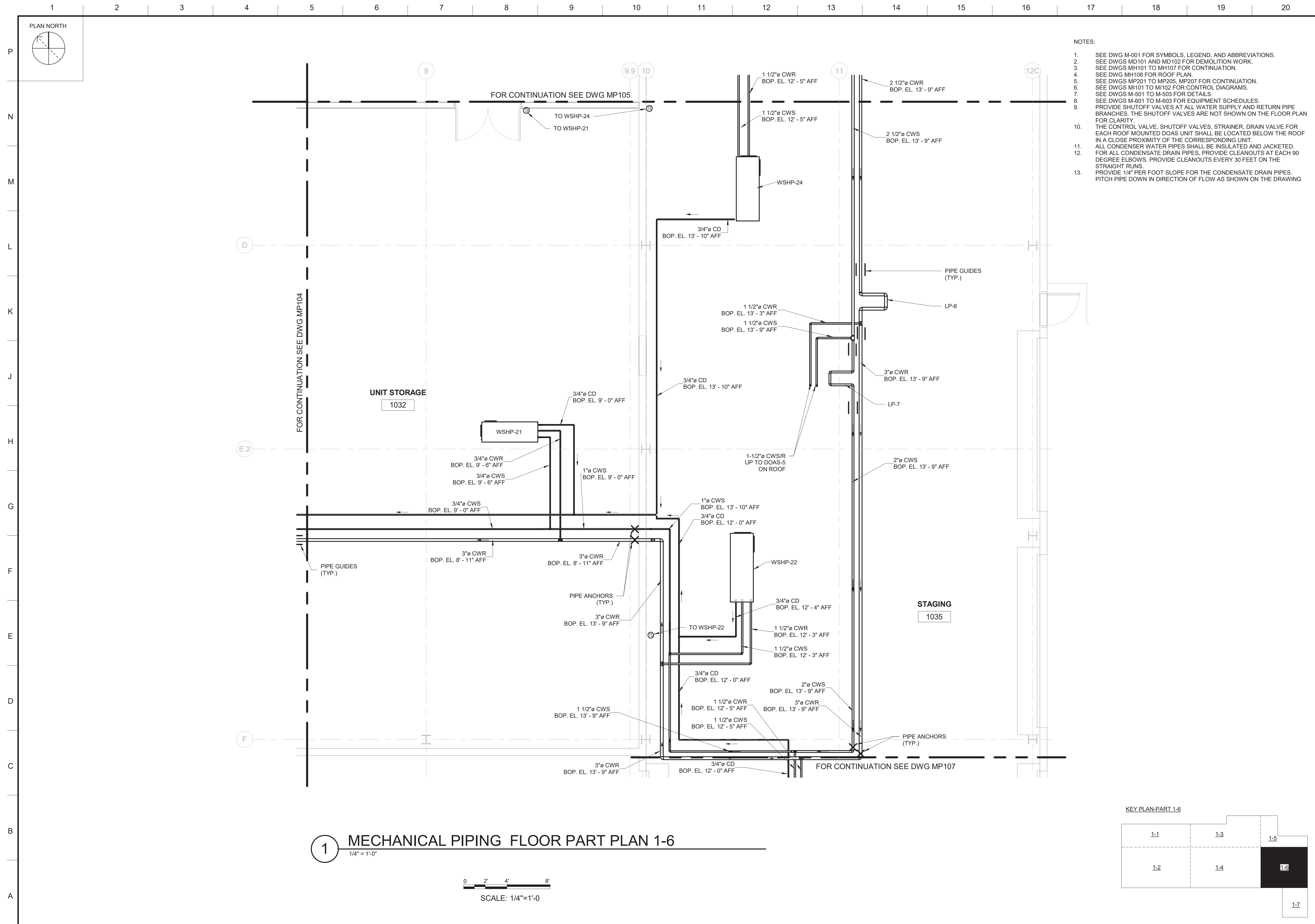
ISSUE DATE: 06 MAY 2021  
PROJECT NO.: W91Z0R20R0038  
CONTRACT NO.: W91Z0R20R0038  
SIZE: A  
ANSI/D

UNITED STATES ARMY RESERVE CENTER  
ORANGEBURG, NEW YORK

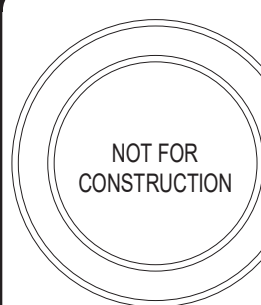
MECHANICAL PIPING FLOOR PART PLAN 1-5

SHEET ID

MP105



**US Army Corps  
of Engineers ®**

[illegible]

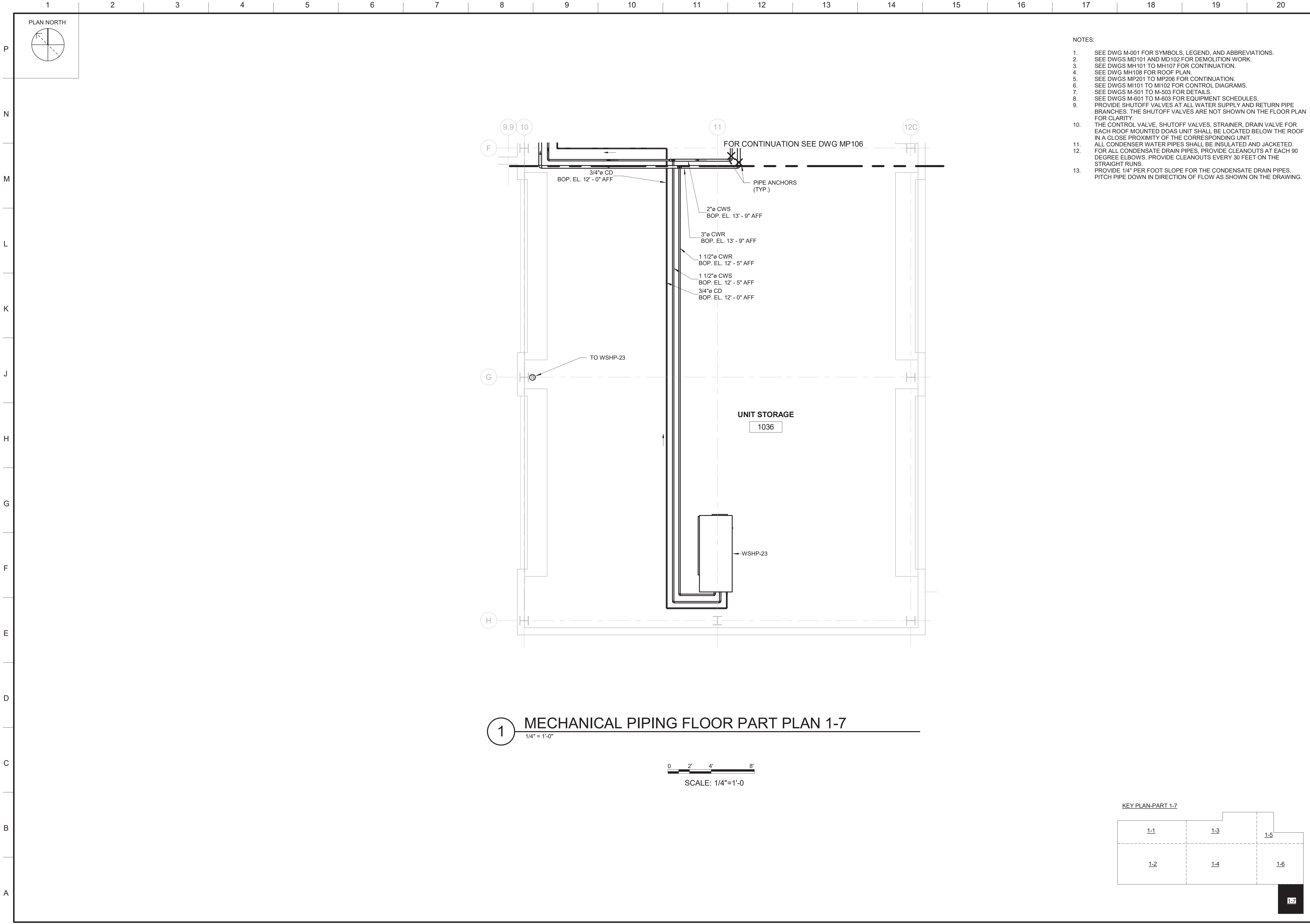
<b>M</b>	US ARMY CORPS OF ENGINEERS LOUISVILLE DISTRICT LOUISVILLE, KY	DESIGNED BY: DGL	ISSUE DATE: 06 MAY 2021
<b>M</b>	111 Wood Avenue Iselin NJ 08830-4112 United States of America	DRAWN BY: W912QR2R0038	SOLICITATION NO.: W912QR2R0038
<b>M</b>		CHECKED BY: MLP	CONTRACT NO.: W912QR2R0038
<b>MOTT</b>		SUBMITTED BY:	

UNITED STATES ARMY RESERVE CENTER  
ORANGEBURG, NEW YORK

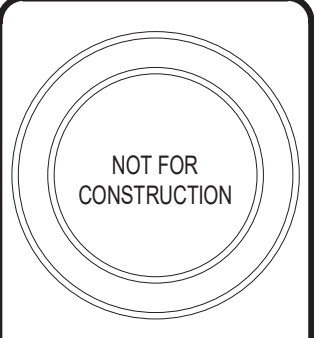
MECHANICAL PIPING FLOOR PART PLAN 1-6

SHEET ID  
MP106

CORRECTED FINAL SUBMISSION - JULY 29, 2021



- NOTES:
- SEE DWG M-001 FOR SYMBOLS, LEGEND, AND ABBREVIATIONS.
  - SEE DWGS MD101 AND MD102 FOR DEMOLITION WORK.
  - SEE DWGS MH101 TO MH107 FOR CONTINUATION.
  - SEE DWG MH108 FOR ROOF PLAN.
  - SEE DWGS MP201 TO MP206 FOR CONTINUATION.
  - SEE DWGS MI101 TO MI102 FOR CONTROL DIAGRAMS.
  - SEE DWGS M-501 TO M-503 FOR DETAILS.
  - SEE DWGS M-601 TO M-603 FOR EQUIPMENT SCHEDULES.
  - PROVIDE SHUTOFF VALVES AT ALL WATER SUPPLY AND RETURN PIPE BRANCHES. THE SHUTOFF VALVES ARE NOT SHOWN ON THE FLOOR PLAN FOR CLARITY.
  - THE CONTROL VALVE, SHUTOFF VALVES, STRAINER, DRAIN VALVE FOR EACH ROOF MOUNTED DOAS UNIT SHALL BE LOCATED BELOW THE ROOF IN A CLOSE PROXIMITY OF THE CORRESPONDING UNIT.
  - ALL CONDENSER WATER PIPES SHALL BE INSULATED AND JACKETED.
  - FOR ALL CONDENSATE DRAIN PIPES, PROVIDE CLEANOUTS AT EACH 90 DEGREE ELBOWS. PROVIDE CLEANOUTS EVERY 30 FEET ON THE STRAIGHT RUNS.
  - PROVIDE 1/4" PER FOOT SLOPE FOR THE CONDENSATE DRAIN PIPES. PITCH PIPE DOWN IN DIRECTION OF FLOW AS SHOWN ON THE DRAWING.



MARK	DESCRIPTION	DATE

ISSUE DATE:  
06 MAY 2021

DESIGNED BY:  
DGL

US ARMY CORPS OF ENGINEERS  
LOUISVILLE DISTRICT  
LOUISVILLE, KY

111 Wood Avenue  
Iselin NJ 08830-4112  
United States of America  
T. + 732-577-0651  
F. + 732-577-0651  
www.mottmacdonald.com

**M**  
**MOTT**  
**MACDONALD**

SOLICITATION NO.:  
W912QR2R0038

DRAWN BY:  
DGL

CHECKED BY:  
MLP

CONTRACT NO.:  
W912QR2R0038

SUBMITTED BY:

SIZE:  
ANSI D

UNITED STATES ARMY RESERVE CENTER  
ORANGEBURG, NEW YORK

MECHANICAL PIPING FLOOR PART PLAN 1-7

SHEET ID

MP107

