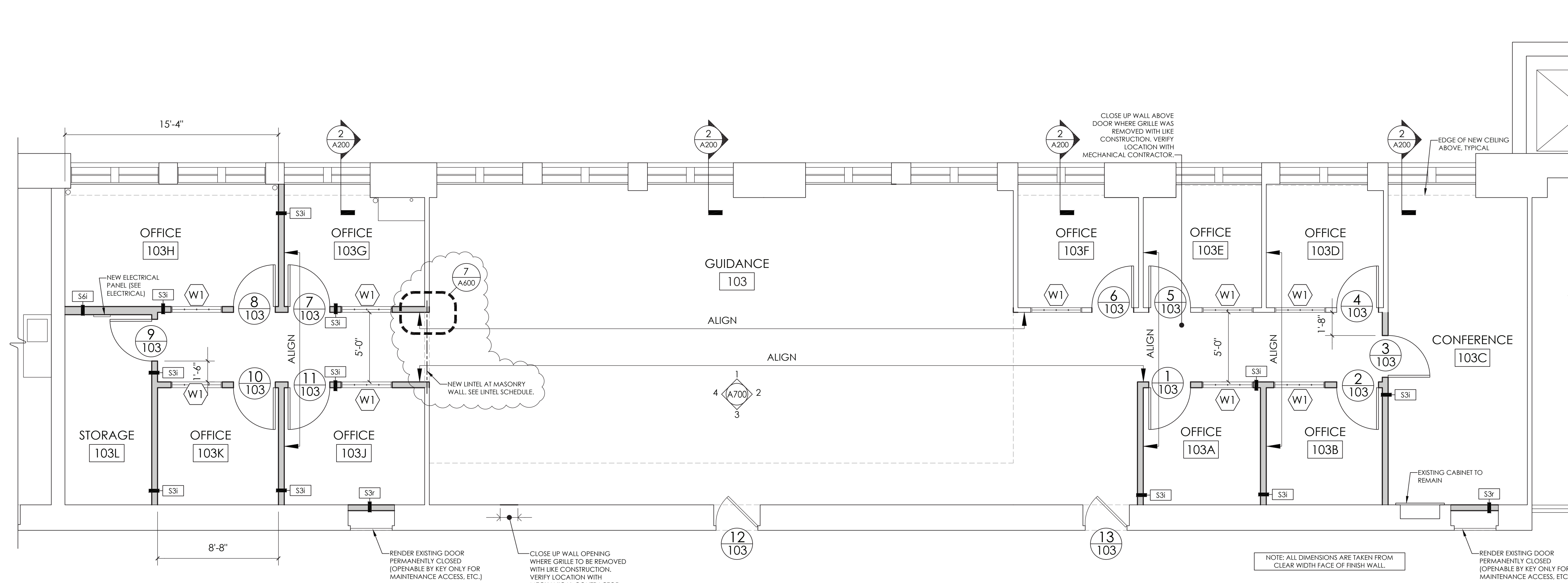


|  |  |
|--|--|
|  |  |
|--|--|

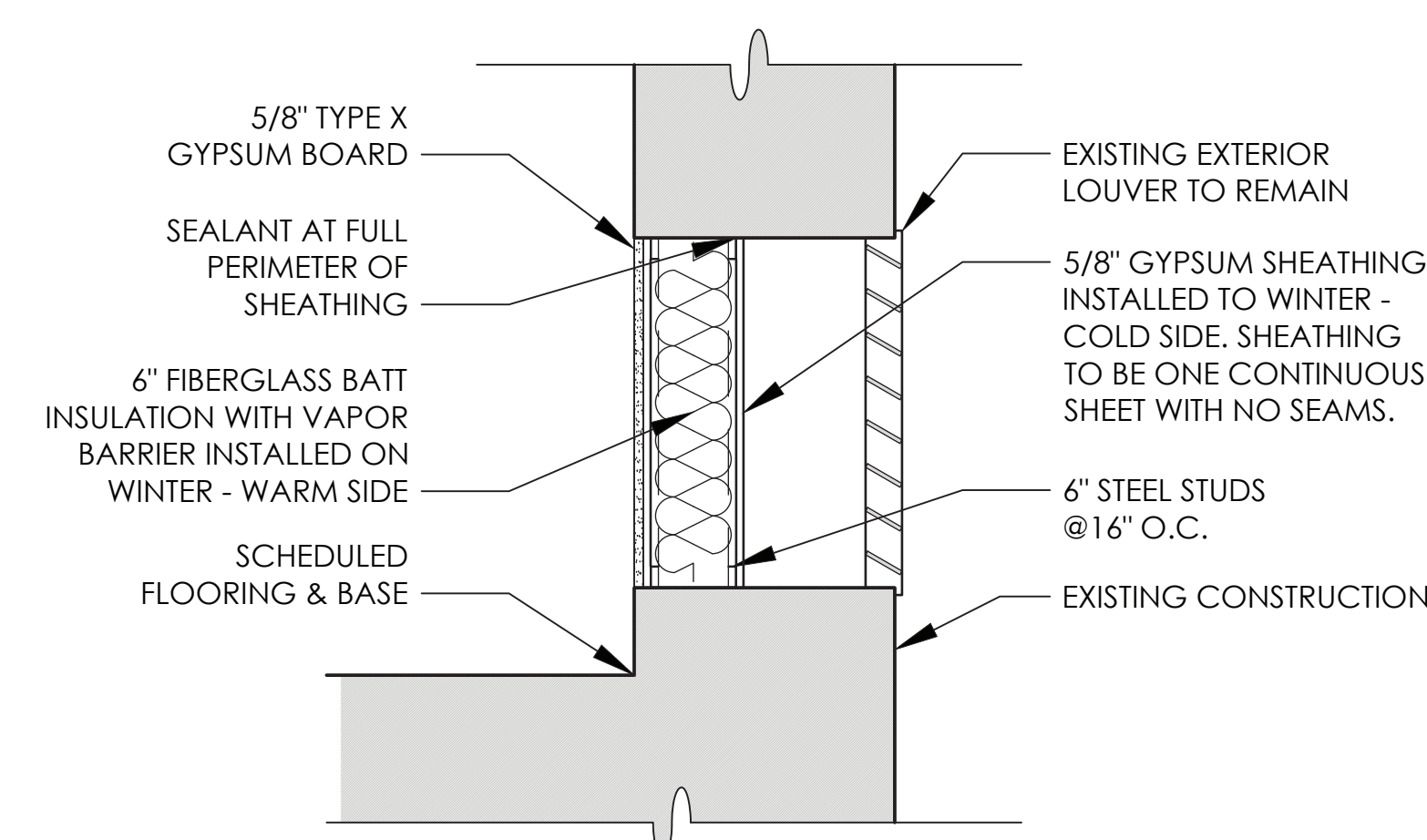
OSSISING UNION FREE SCHOOL DISTRICT  
 OSSISING HIGH SCHOOL  
 GUIDANCE OFFICE RENOVATIONS  
 229 SOUTH HIGHLAND AVENUE, OSSISING, NEW YORK 10505  
 SED #66-14-01-03-0-003-039

|                |       |         |
|----------------|-------|---------|
| DATE           | DRAWN | CHECKED |
| 08/31/2020     | NH    | MJ      |
| SCALE AS NOTED |       |         |

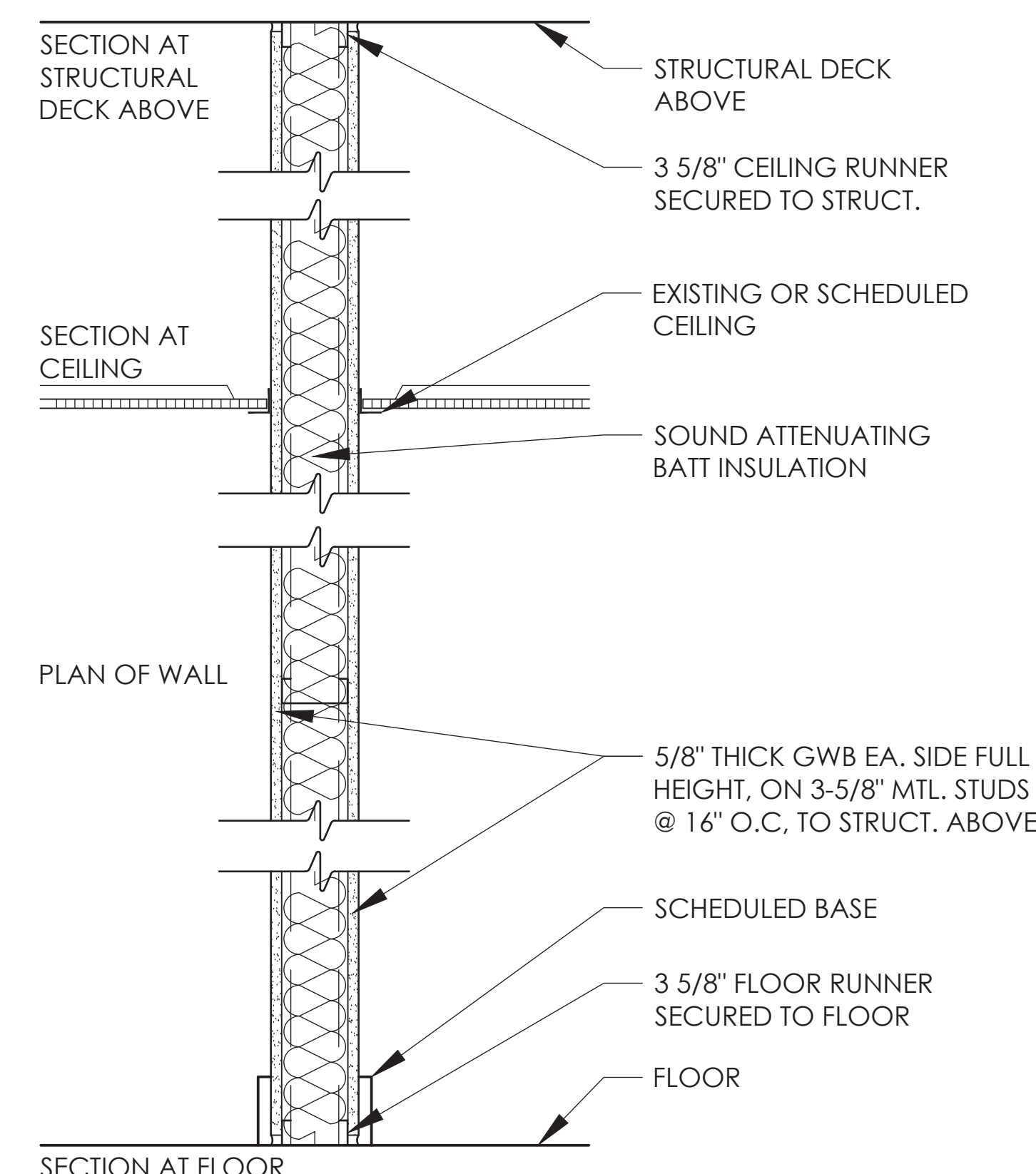
SHEET TITLE  
NEW WORK FLOOR  
PLAN & WALL TYPES



1 FIRST FLOOR NEW WORK PLAN  
A200 SCALE: 1/4" = 1'-0"

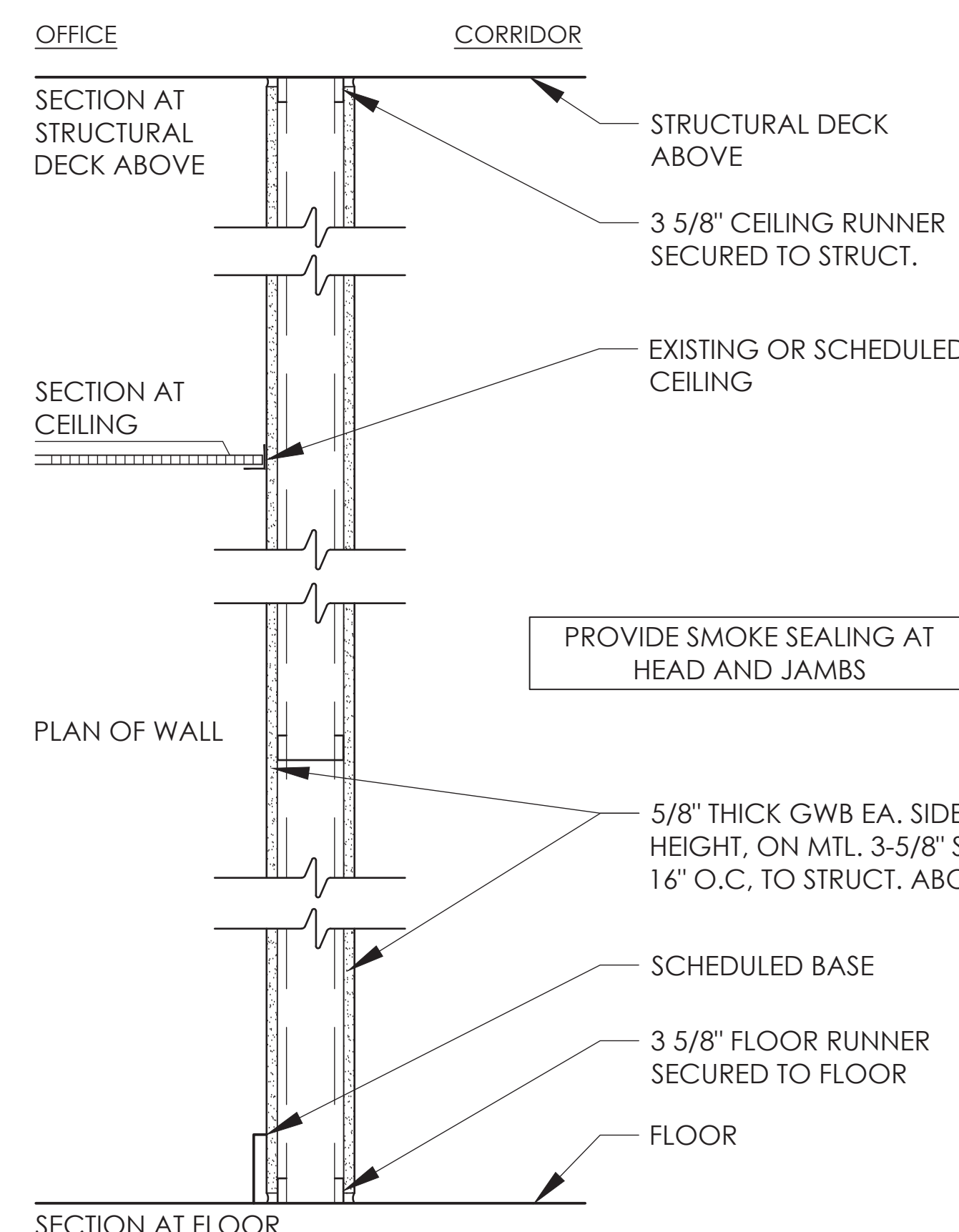


2 EXTERIOR INFILL WALL DETAIL  
A200 SCALE: 1" = 1'-0"

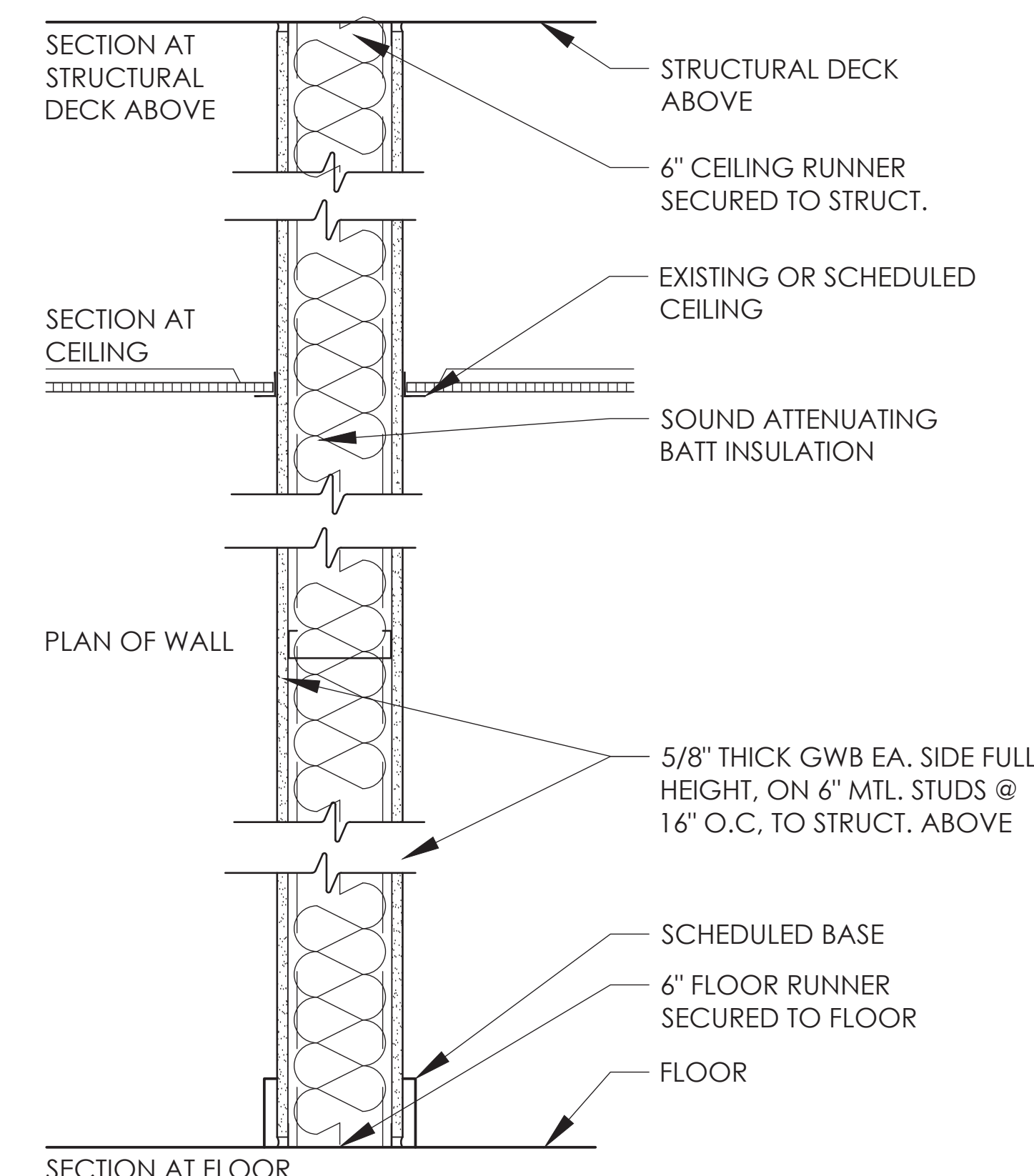


| TYPE | FIRE TEST LAB & DESIGN | FIRE RATING | STC |
|------|------------------------|-------------|-----|
| S3i  | NA                     | NR          | 47  |

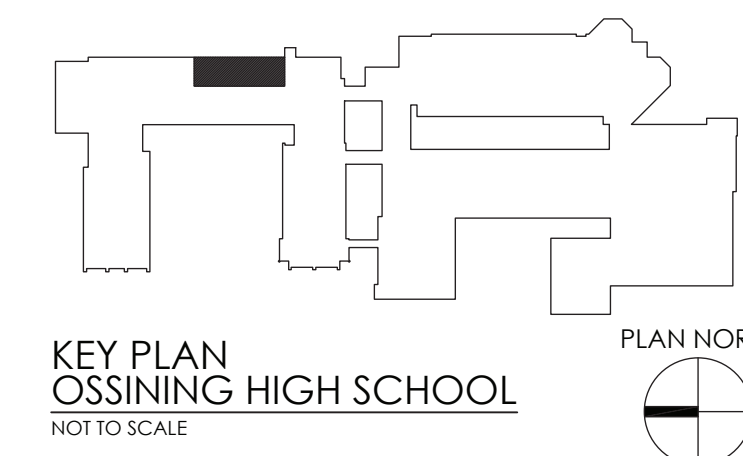
3 WALL TYPES  
A200 SCALE: NTS



| TYPE | FIRE TEST LAB & DESIGN | FIRE RATING | STC |
|------|------------------------|-------------|-----|
| S3r  | UL - U465              | 1 HR.       | 47  |



| TYPE | FIRE TEST LAB & DESIGN | FIRE RATING | STC |
|------|------------------------|-------------|-----|
| S6i  | NA                     | NR          | 47  |

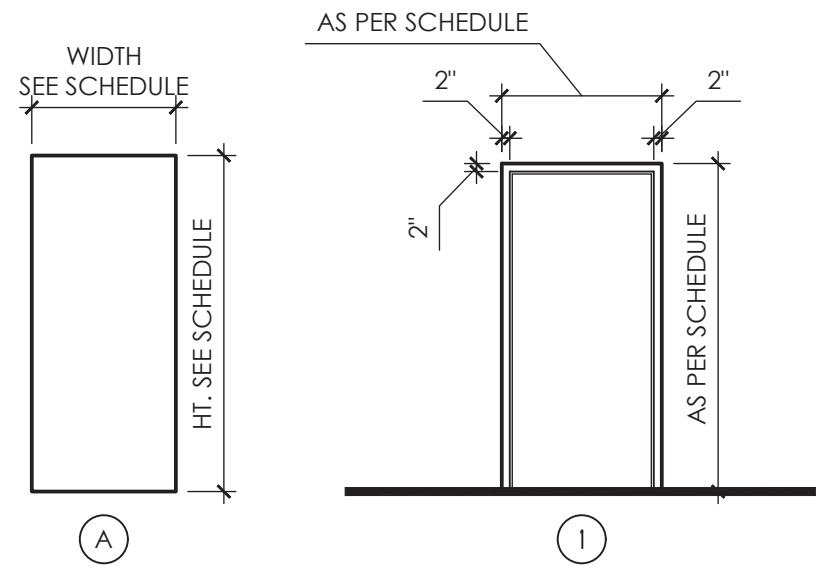




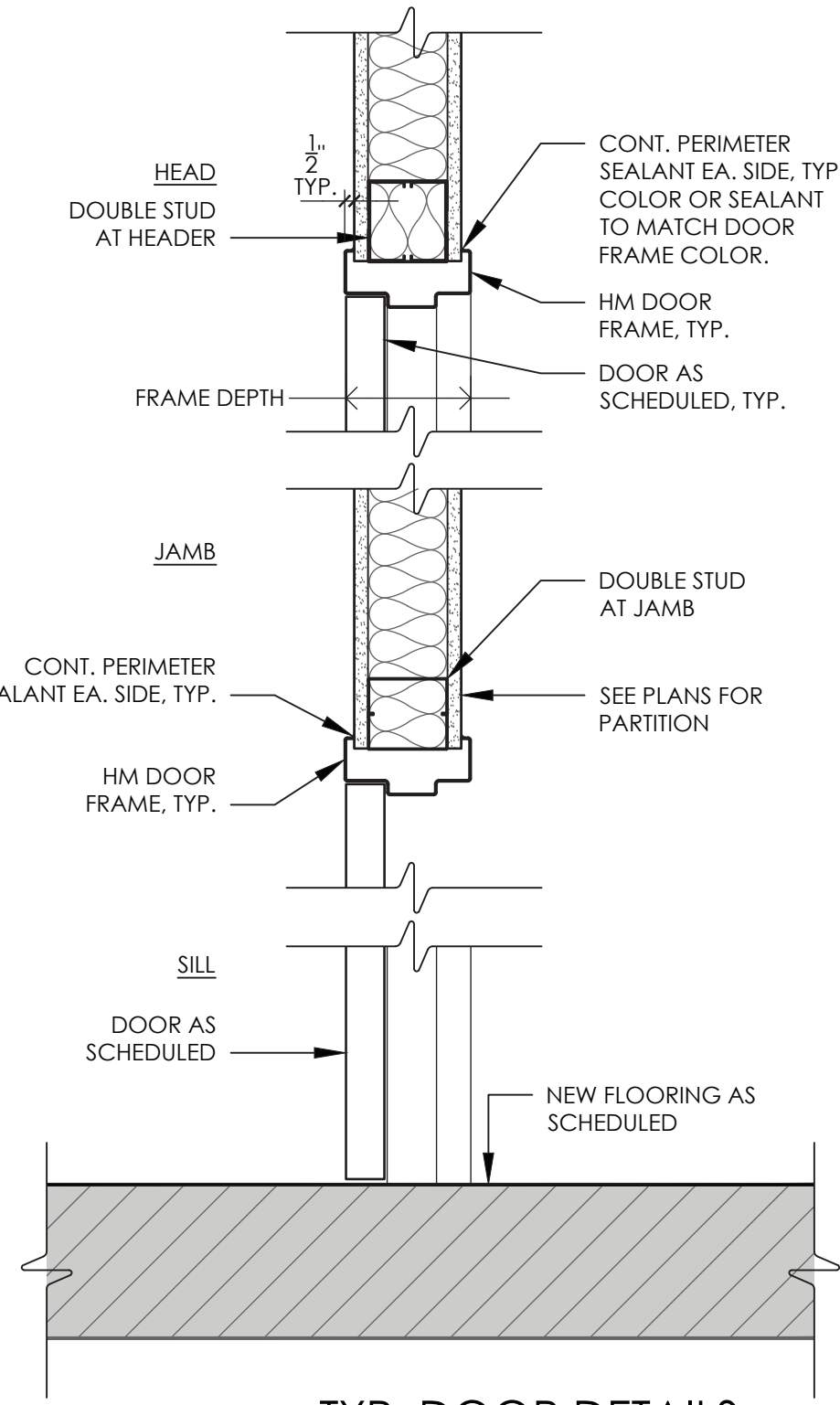
| DOOR SCHEDULE |               |        |        |      |                   |          |                   |              |        |        |      |                   |             |             |                          |                          |                                |
|---------------|---------------|--------|--------|------|-------------------|----------|-------------------|--------------|--------|--------|------|-------------------|-------------|-------------|--------------------------|--------------------------|--------------------------------|
| DOOR NO.      | DOORS         |        |        |      |                   |          | FIRE RATING       | FRAMES       |        |        |      |                   |             |             |                          | HARDWARE SET NO.         | REMARKS (SEE NOTES BELOW ALSO) |
|               | SIZE          |        |        | TYPE | MATERIAL / FINISH | UNDERCUT |                   | OVERALL SIZE |        |        | TYPE | MATERIAL / FINISH | JAMB DETAIL | HEAD DETAIL | SILL DETAIL              |                          |                                |
|               | WIDTH         | HEIGHT | TH.    |      |                   |          |                   | WIDTH        | HEIGHT | DEPTH  |      |                   |             |             |                          |                          |                                |
| 1-103         | 3'-0"         | 7'-0"  | 1 3/4" | A    | WD/ST             | -        | -                 | 3'-4"        | 7'-2"  | 5 7/8" | 1    | HM/PT             | 2/A900      | 2/A900      | 2/A900                   | SEE SPEC. SECTION 087100 |                                |
| 2-103         | 3'-0"         | 7'-0"  | 1 3/4" | A    | WD/ST             | -        | -                 | 3'-4"        | 7'-2"  | 5 7/8" | 1    | HM/PT             | 2/A900      | 2/A900      | 2/A900                   | SEE SPEC. SECTION 087100 |                                |
| 3-103         | 3'-0"         | 7'-0"  | 1 3/4" | A    | WD/ST             | -        | -                 | 3'-4"        | 7'-2"  | 5 7/8" | 1    | HM/PT             | 2/A900      | 2/A900      | 2/A900                   | SEE SPEC. SECTION 087100 |                                |
| 4-103         | 3'-0"         | 7'-0"  | 1 3/4" | A    | WD/ST             | -        | -                 | 3'-4"        | 7'-2"  | 5 7/8" | 1    | HM/PT             | 2/A900      | 2/A900      | 2/A900                   | SEE SPEC. SECTION 087100 |                                |
| 5-103         | 3'-0"         | 7'-0"  | 1 3/4" | A    | WD/ST             | -        | -                 | 3'-4"        | 7'-2"  | 5 7/8" | 1    | HM/PT             | 2/A900      | 2/A900      | 2/A900                   | SEE SPEC. SECTION 087100 |                                |
| 6-103         | 3'-0"         | 7'-0"  | 1 3/4" | A    | WD/ST             | -        | -                 | 3'-4"        | 7'-2"  | 5 7/8" | 1    | HM/PT             | 2/A900      | 2/A900      | 2/A900                   | SEE SPEC. SECTION 087100 |                                |
| 7-103         | 3'-0"         | 7'-0"  | 1 3/4" | A    | WD/ST             | -        | -                 | 3'-4"        | 7'-2"  | 5 7/8" | 1    | HM/PT             | 2/A900      | 2/A900      | 2/A900                   | SEE SPEC. SECTION 087100 |                                |
| 8-103         | 3'-0"         | 7'-0"  | 1 3/4" | A    | WD/ST             | -        | -                 | 3'-4"        | 7'-2"  | 5 7/8" | 1    | HM/PT             | 2/A900      | 2/A900      | 2/A900                   | SEE SPEC. SECTION 087100 |                                |
| 9-103         | 3'-0"         | 7'-0"  | 1 3/4" | A    | WD/ST             | -        | -                 | 3'-4"        | 7'-2"  | 5 7/8" | 1    | HM/PT             | 2/A900      | 2/A900      | 2/A900                   | SEE SPEC. SECTION 087100 |                                |
| 10-103        | 3'-0"         | 7'-0"  | 1 3/4" | A    | WD/ST             | -        | -                 | 3'-4"        | 7'-2"  | 5 7/8" | 1    | HM/PT             | 2/A900      | 2/A900      | 2/A900                   | SEE SPEC. SECTION 087100 |                                |
| 11-103        | 3'-0"         | 7'-0"  | 1 3/4" | A    | WD/ST             | -        | -                 | 3'-4"        | 7'-2"  | 5 7/8" | 1    | HM/PT             | 2/A900      | 2/A900      | 2/A900                   | SEE SPEC. SECTION 087100 |                                |
| 12-103        | EXISTING DOOR |        |        |      |                   |          | & FRAME TO REMAIN |              |        |        |      |                   |             |             | SEE SPEC. SECTION 087100 |                          |                                |
| 13-103        | EXISTING DOOR |        |        |      |                   |          | & FRAME TO REMAIN |              |        |        |      |                   |             |             | SEE SPEC. SECTION 087100 |                          |                                |

| LEGEND |                          |
|--------|--------------------------|
| WD     | WOOD                     |
| HM     | HOLLOW METAL             |
| EX     | EXISTING                 |
| PT     | PAINTED                  |
| MFR    | MANUFACTURER             |
| ALUM   | ALUMINUM                 |
| SIM    | SIMILAR                  |
| FRP    | FIBER REINFORCED POLYMER |
| STL    | STEEL                    |
| ST     | STAINED/POLYURETHANED    |

- NOTES:
1. ALL SIZES SHOWN FOR DOORS & FRAMES TO BE PROVIDED IN EXISTING OPENINGS ARE APPROXIMATE. CONTRACTOR SHALL DETERMINE ACTUAL DIMENSIONS IN THE FIELD.
  2. NEW DOORS SHALL MATCH FIRE-RATING OF EXISTING DOORS THAT THEY REPLACE. U.N.O.



1  
A900  
TYPICAL DOOR AND FRAME TYPES  
SCALE: 1/4" = 1'-0"

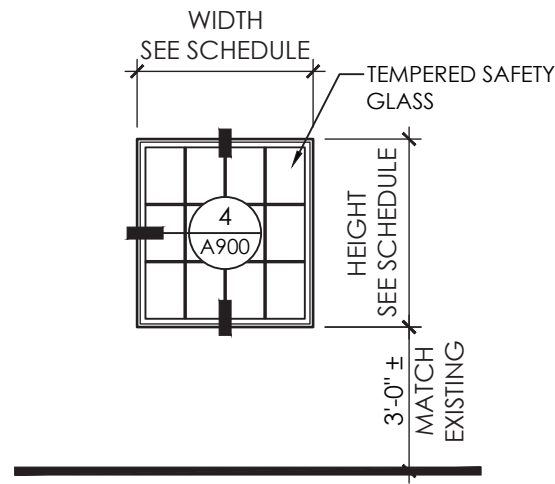
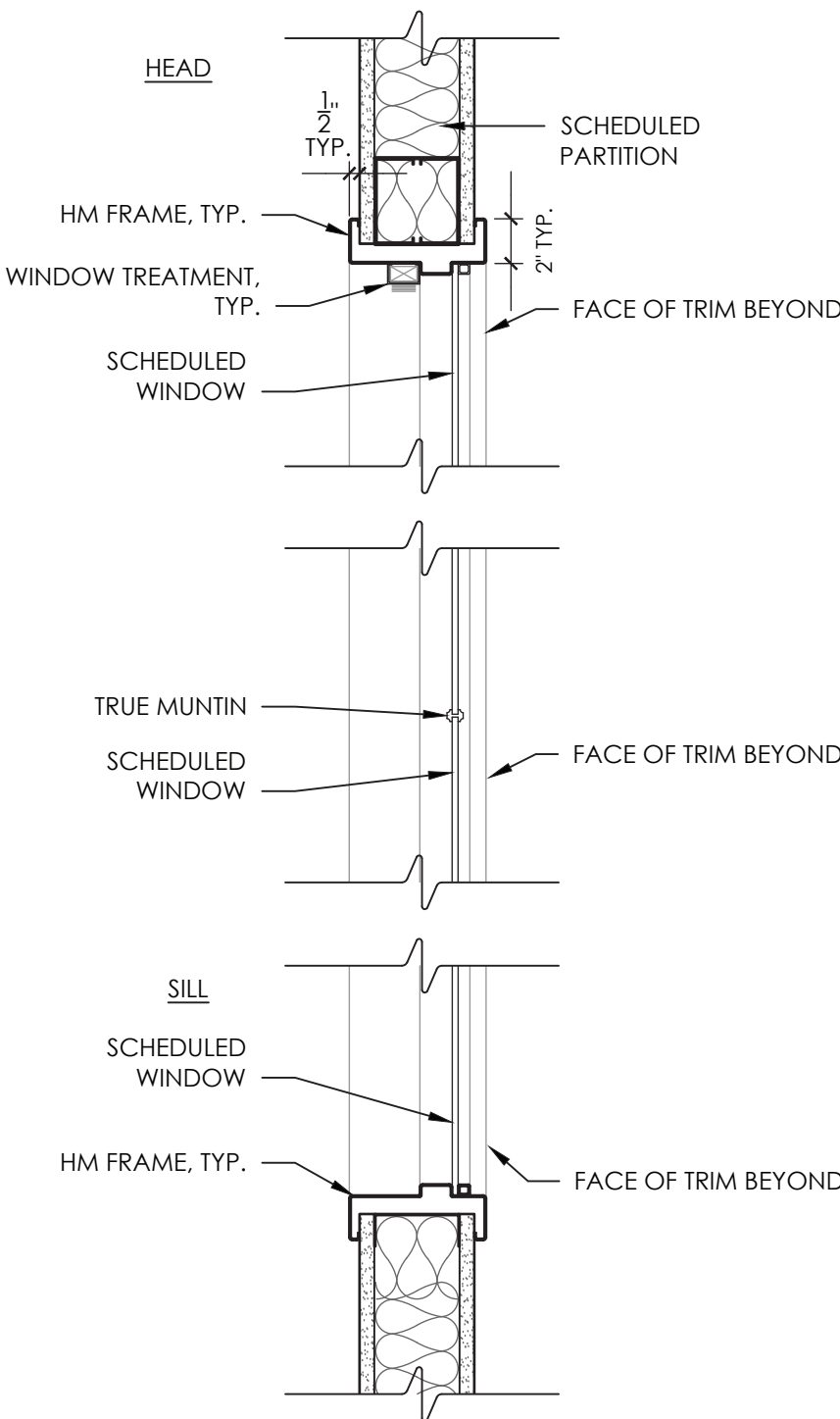


2  
A900  
TYP. DOOR DETAILS AT STUD PARTITION  
SCALE: 1 1/2" = 1'-0"

| LOOSE LINTEL SCHEDULE            |                |                                  |
|----------------------------------|----------------|----------------------------------|
| WALL TYPE                        | SPAN           | LINTEL                           |
| 4" MASONRY / VENEER              | 1'-4" to 4'-6" | L 4 x 3 1/2 x 5/16 (L.L.V.)      |
|                                  | 4'-7" to 5'-6" | L 4 x 3 1/2 x 5/16 (L.L.V.)      |
|                                  | 5'-7" to 6'-6" | L 5 x 3 1/2 x 5/16 (L.L.V.)      |
|                                  | 6'-7" to 7'-6" | L 6 x 3 1/2 x 5/16 (L.L.V.)      |
| 6" BLOCK                         | 1'-4" to 4'-6" | WT 4 x 9                         |
|                                  | 4'-7" to 5'-6" | WT 4 x 10.5                      |
|                                  | 5'-7" to 6'-6" | WT 5 x 13                        |
|                                  | 6'-7" to 7'-6" | WT 5 x 13                        |
| 8" BLOCK                         | 1'-4" to 4'-6" | (2) - L4 x 3 1/2 x 5/16 (L.L.V.) |
|                                  | 4'-7" to 5'-6" | (2) - L4 x 3 1/2 x 5/16 (L.L.V.) |
|                                  | 5'-7" to 6'-6" | (2) - L5 x 3 1/2 x 5/16 (L.L.V.) |
|                                  | 6'-7" to 7'-6" | (2) - L6 x 3 1/2 x 5/16 (L.L.V.) |
| 4" BRICK & 8" BLOCK OR 12" BLOCK | 1'-4" to 4'-6" | WT 9 x 25                        |
|                                  | 4'-7" to 5'-6" | (3) - L4 x 3 1/2 x 5/16 (L.L.V.) |
|                                  | 5'-7" to 6'-6" | (3) - L4 x 3 1/2 x 5/16 (L.L.V.) |
|                                  | 6'-7" to 7'-6" | (3) - L5 x 3 1/2 x 5/16 (L.L.V.) |

1. PROVIDE LOOSE LINTELS OVER ALL OPENINGS IN EXTERIOR AND INTERIOR MASONRY WALLS AS SCHEDULED UNLESS OTHERWISE INDICATED ON THE DRAWINGS.
2. MINIMUM BEARING FOR ALL LINTELS SHALL BE 8" EACH END.
3. BLOCK WALLS SHALL BE GROUTED SOLID 3 COURSES BELOW BEARING POINT FOR A WIDTH OF 16" UNLESS NOTED OTHERWISE ON STRUCTURAL FRAMING PLANS.
4. SEE ARCH., HVAC, & PLUMBING DRAWINGS FOR SIZE AND LOCATION OF ALL WALL OPENINGS.
5. CONTRACTOR SHALL PROVIDE AN ADDITIONAL 50 FT. OF ANGLE 5 x 3 1/2 x 5/16 OR THE EQUIVALENT.
6. FOR LINTEL SPANS GRATER THAN 6'-0", BOLT ASSEMBLIES TOGETHER AT 1/3 POINTS.
7. WHERE LINTELS REQUIRE 3 ANGLES, PROVIDE A 3/16" PLATE EQUAL TO WALL WIDTH ACROSS SPAN, ATTACHED TO BOTTOM OF THE LINTEL.

| WINDOW SCHEDULE |                     |        |          |         |           |
|-----------------|---------------------|--------|----------|---------|-----------|
| TYPE            | UNIT SIZE (NOMINAL) |        | MATERIAL | GLAZING |           |
|                 | WIDTH               | HEIGHT |          | TYPE    | THICKNESS |
| W1              | 3'-8"               | 4'-0"  | HM       | TG-1    | 1/4"      |



3  
A900  
WINDOW TYPE  
SCALE: 1 1/2" = 1'-0"

4  
A900  
TYP. WINDOW DETAILS AT STUD PARTITION  
SCALE: 1 1/2" = 1'-0"

OSSINING UNION FREE SCHOOL DISTRICT  
OSSINING HIGH SCHOOL  
GUIDANCE OFFICE RENOVATIONS  
29 SOUTH HIGHLAND AVENUE, OSSINING, NEW YORK 10562  
SED # 66-14-01-03-0-003-039

|            |       |         |
|------------|-------|---------|
| DATE       | DRAWN | CHECKED |
| 08/31/2020 | NH    | MJ      |

SCALE AS NOTED

SHEET TITLE  
DOOR & WINDOW  
SCHEDULES & DETAILS

PROJECT NUMBER  
14428.12

OHS  
A900  
DRAWING NUMBER



50 FRONT STREET, SUITE 202  
NEWBURGH, NEW YORK 12550  
TEL (800) 274-9000  
FAX (845) 567-9614

| REVISIONS | NO. | DATE       | DESCRIPTION    |
|-----------|-----|------------|----------------|
|           | 1   | 11/13/2020 | SED ADDENDUM 2 |
|           | 2   | 12/18/2020 | BID ADDENDUM 1 |