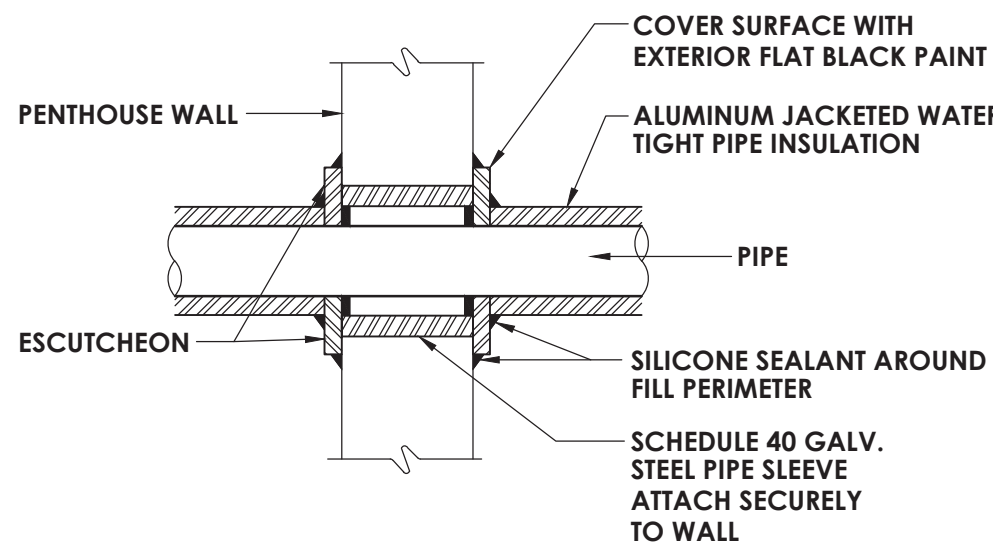
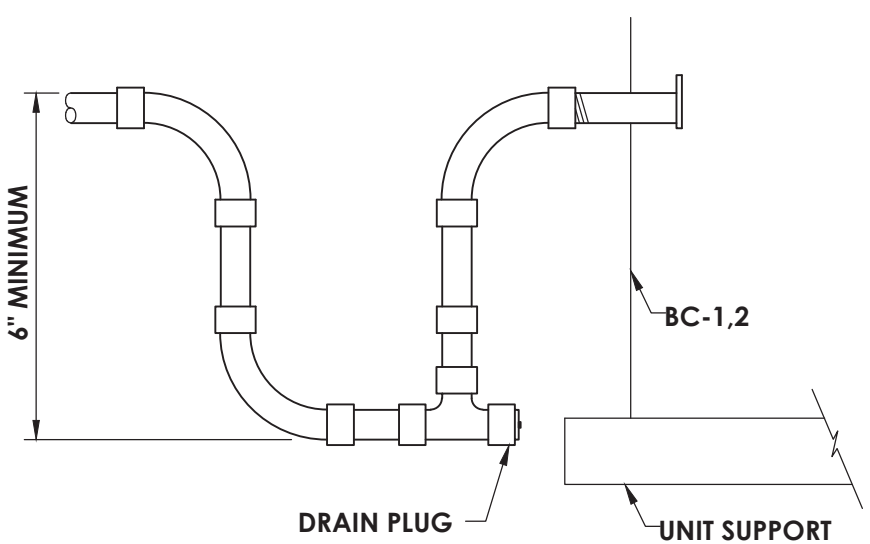


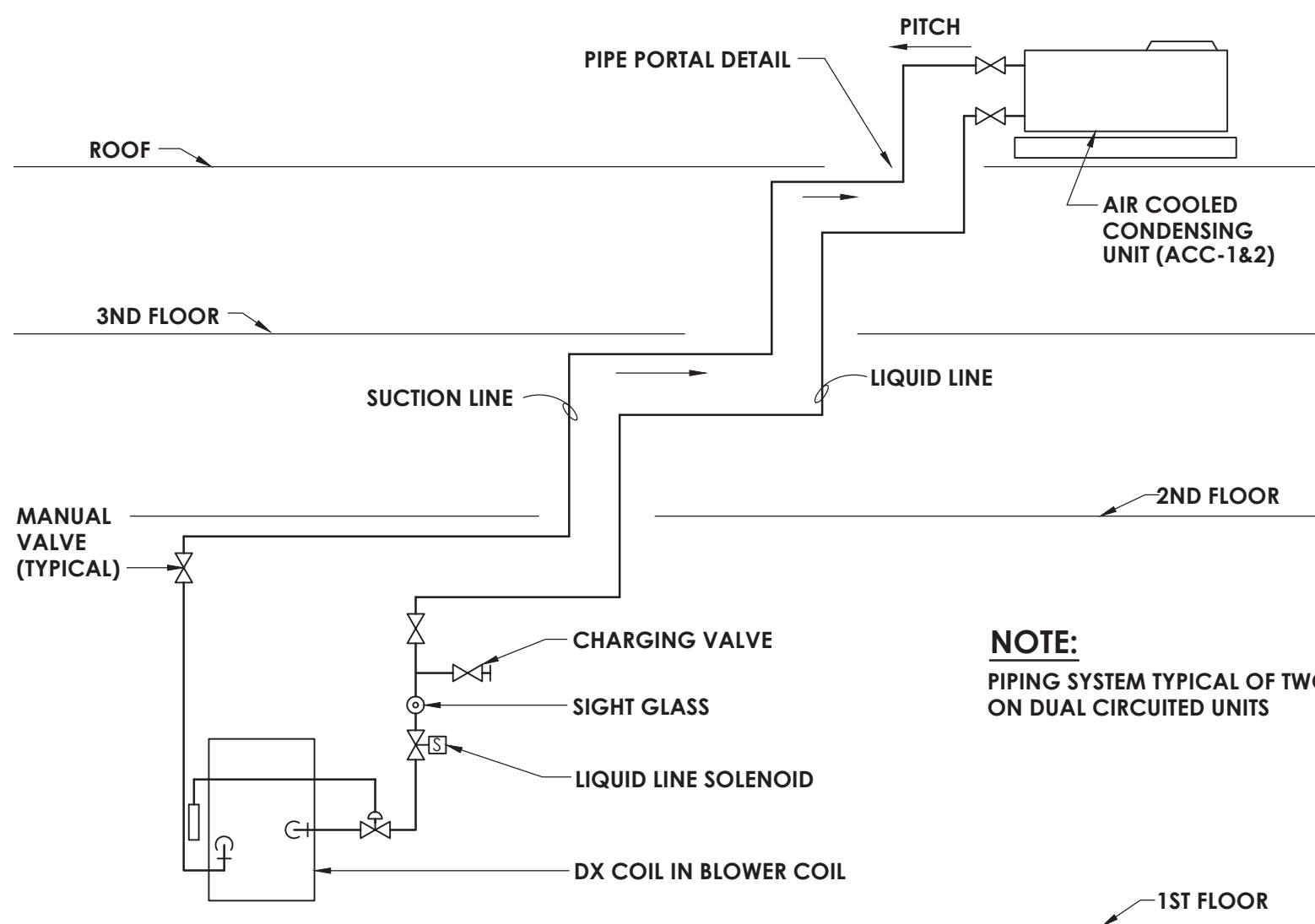
1 DIFFUSER DETAIL
H800 NOT TO SCALE



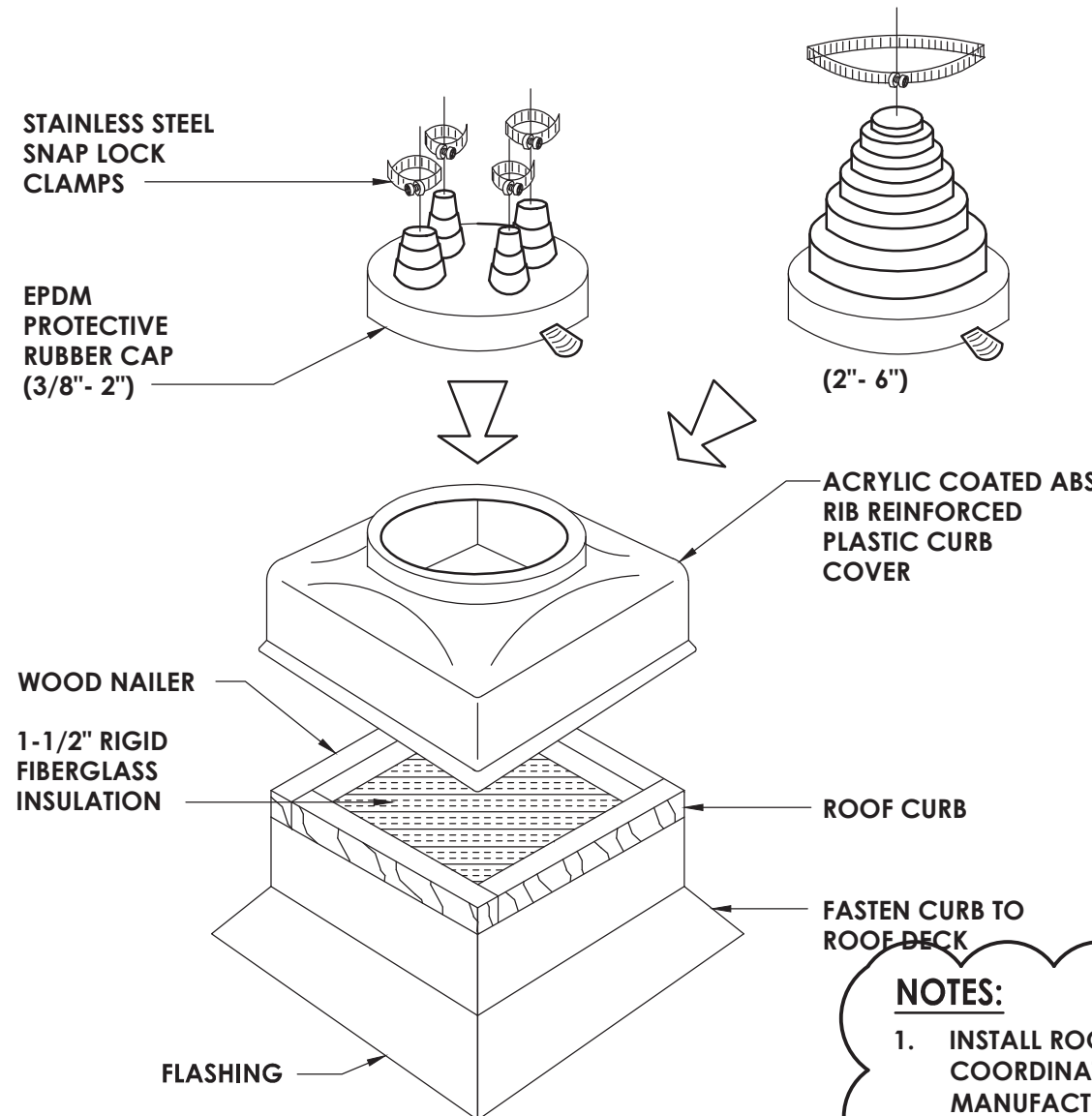
3 PIPE THROUGH NON-RATED WALL
H800 NOT TO SCALE



5 CONDENSATE TRAP DETAIL
H800 NOT TO SCALE

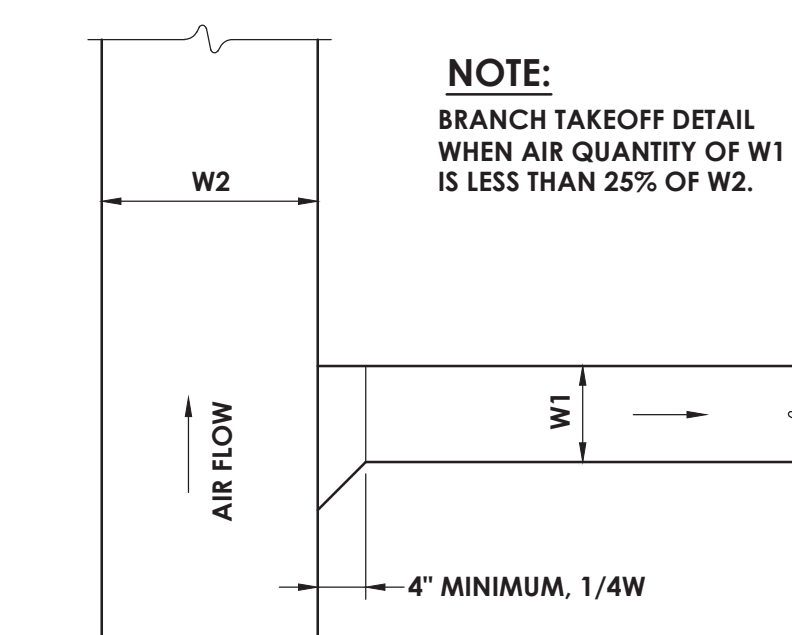


8 REFRIGERANT PIPING SCHEMATIC
H800 NOT TO SCALE

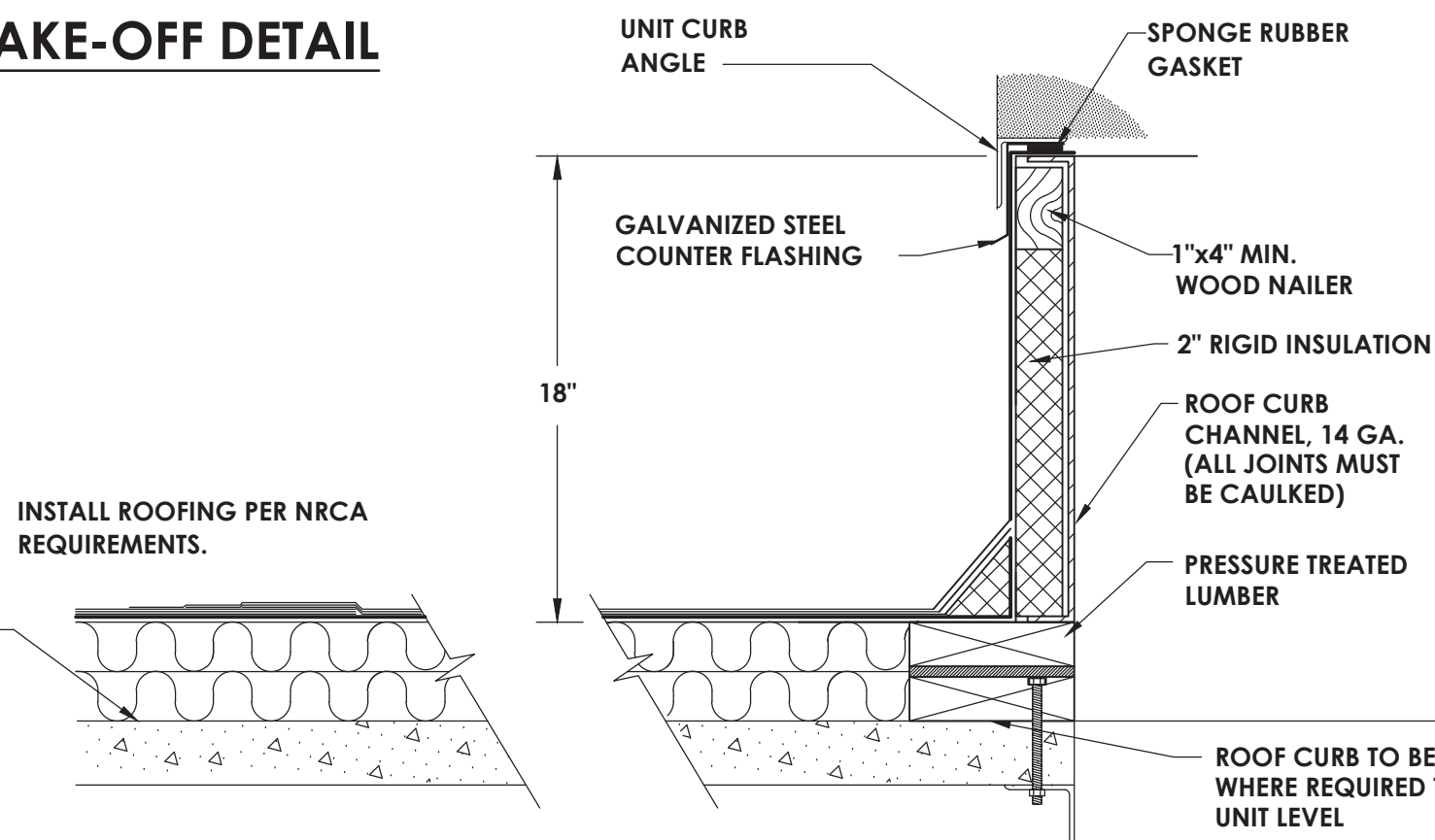


12 PIPE PORTAL DETAIL
H800 NOT TO SCALE

NOTE:
BRANCH TAKEOFF DETAIL
WHEN AIR QUANTITY OF W1
IS LESS THAN 25% OF W2.

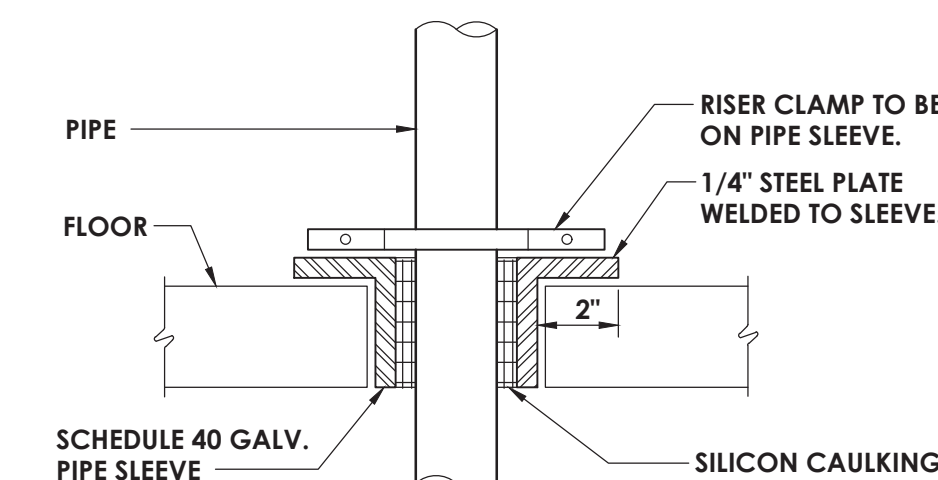


2 BRANCH TAKE-OFF DETAIL
H800 NOT TO SCALE

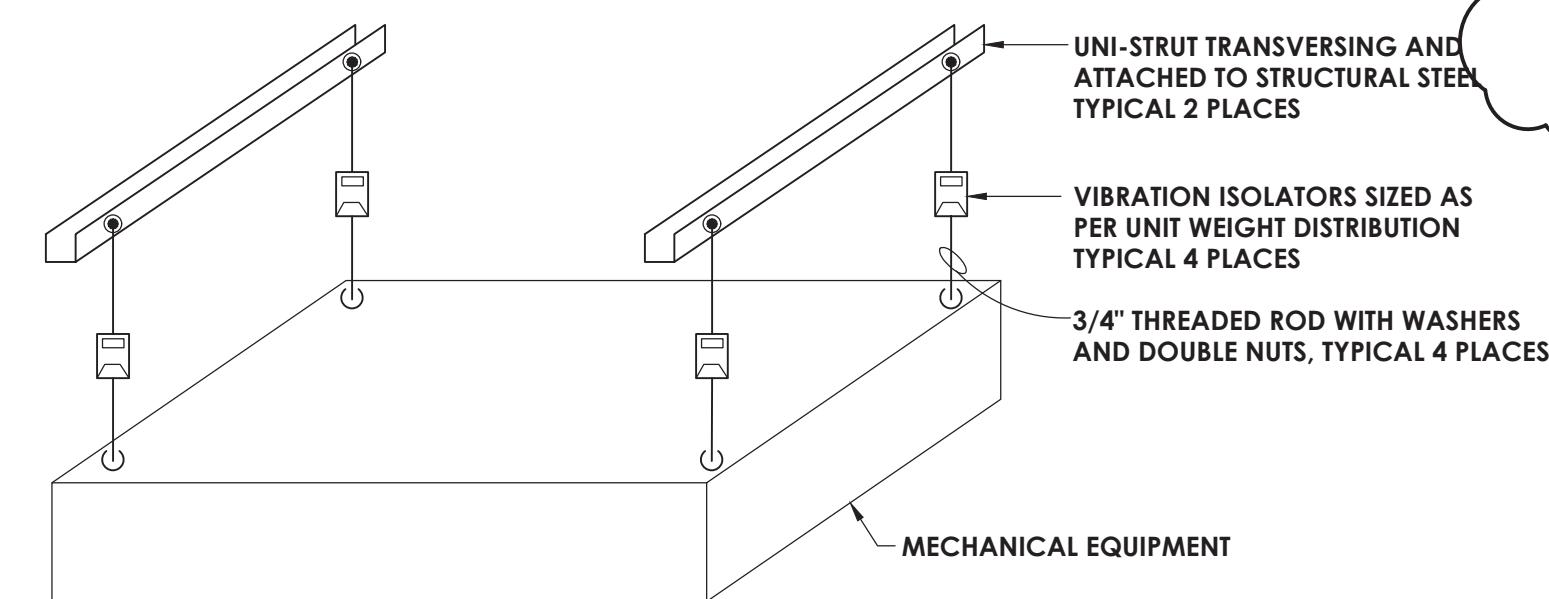


- NOTES:
1. ALL ROOF TOP HVAC EXHAUST FANS REQUIRED TO HAVE CURB AND CURB INTERIOR AS SHOWN UNLESS OTHERWISE NOTED.
 2. INSTALL ROOFING PER NRCA RECOMMENDATIONS. COORDINATE WITH OWNER AND EXISTING ROOFING MANUFACTURER TO MAINTAIN WARRANTY.
 3. REMOVE EXISTING ROOFING AND ROOF INSULATION DOWN TO EXISTING ROOF DECK AS NECESSARY FOR INSTALLATION OF HVAC EQUIPMENT CURB. CUT OPENING IN EXISTING ROOF DECK AND PROVIDE STRUCTURAL SUPPORT FOR MECHANICAL EQUIPMENT AND OPENING EDGE.
 4. SECURE EQUIPMENT TO RAIL WITH CADMIUM PLATED HARDWARE.
 5. INSTALLATION OF ALL MECHANICAL EQUIPMENT, RAILS AND CURBS SHALL CONFORM TO NYS BUILDING CODE SECTION 1604.9 AND THE WIND RESTRAINT REQUIREMENTS OF THIS PROJECT.

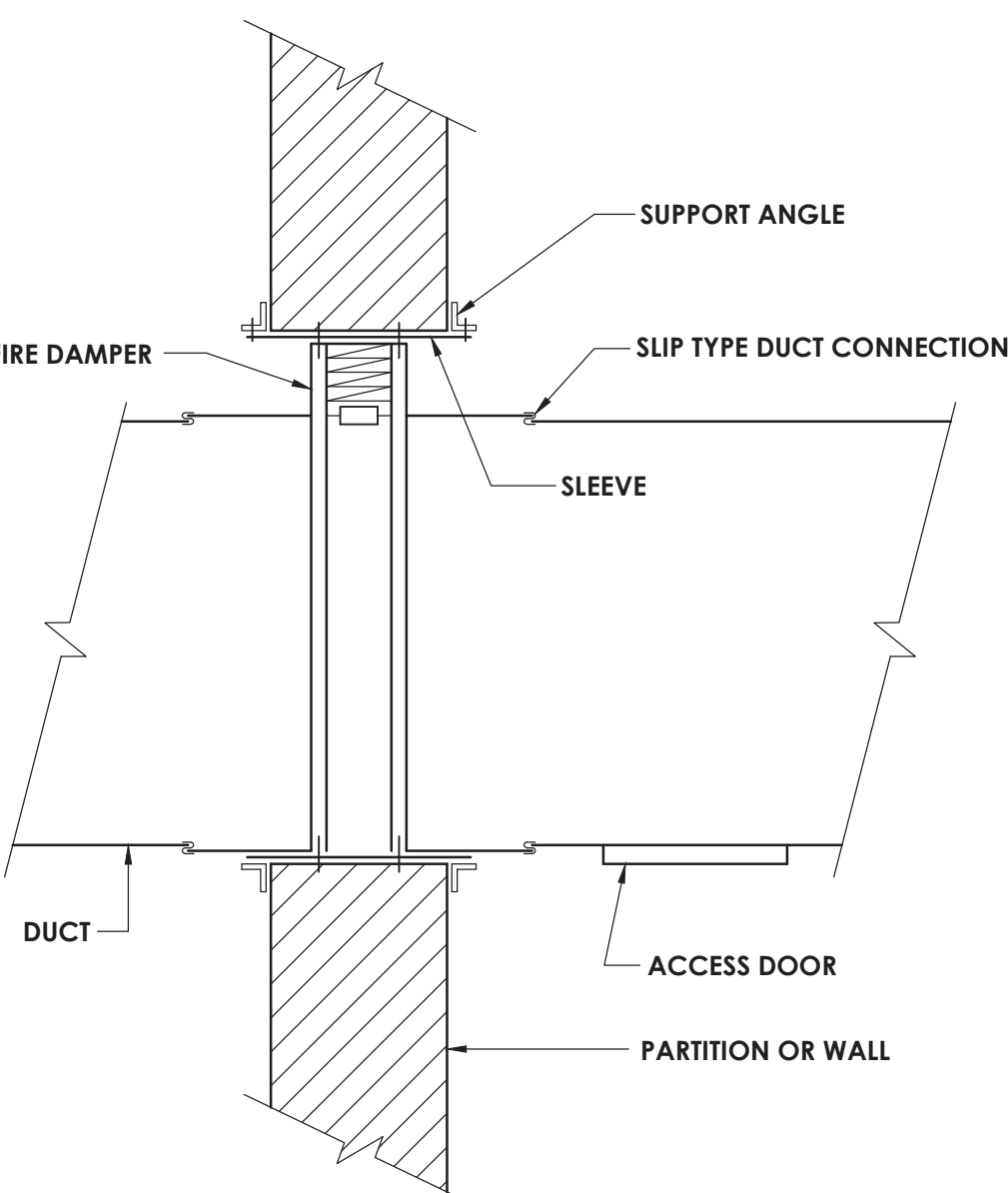
4 ROOF VENT ROOF CURB DETAIL - EXISTING ROOF
H800 NOT TO SCALE



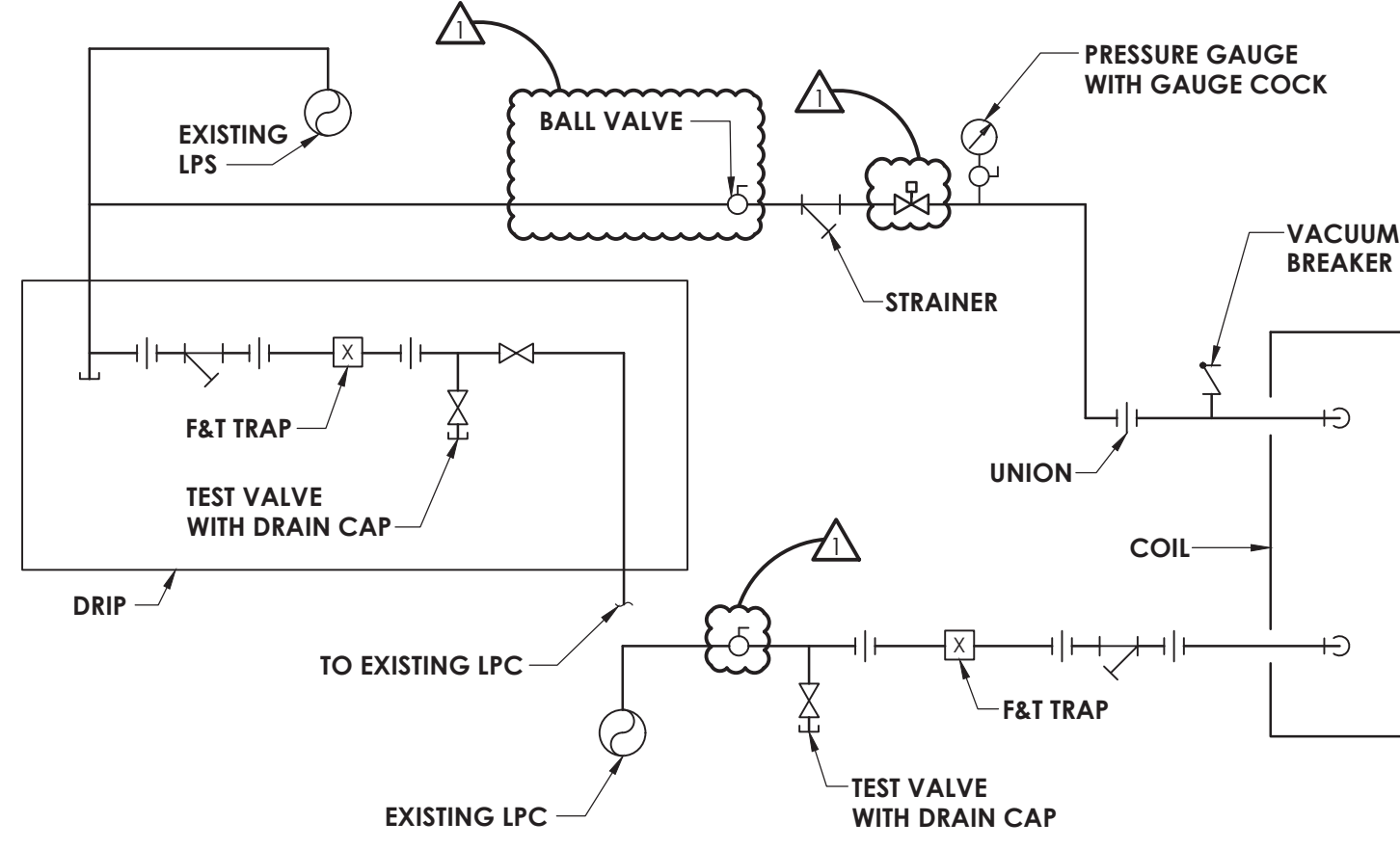
6 PIPE THROUGH NON-RATED FLOOR
H800 NOT TO SCALE



9 INDOOR UNIT SUPPORT INSTALLATION DETAIL
H800 NOT TO SCALE



13 VERTICAL FIRE DAMPER DETAIL
H800 NOT TO SCALE



14 STEAM COIL PIPING DETAIL
H800 NOT TO SCALE

BLOWER COIL SCHEDULE

MARK	SUPPLY CFM	MIN. OA CFM	RETURN CFM	FAN DATA				ELECTRICAL DATA				STEAM HEATING COIL DATA				DX COOLING DATA								WT (LBS)	TYPICAL UNIT MFG & MODEL NO.	REMARKS:
				EXT. SP.	TOTAL SP.	RPM	BHP	VOLT	PH	HZ	MBH	TEMP °F		INLET (PSI)	FACE AREA (FT²)	COND. LB/HR	DX FACE AREA (FT²)	ROWS	FPI	EAT °F DB	LAT °F DB/WE	COOLING MBH				
												ENT	LVG									TOTAL	SENS			
BC-1	1977	310	1667	1.5	2.45	2678	1.34	208	3	60	85.8	59.1	99.2	2	6.3	87.8	6.4	3	12	78.5/66.1	58.4/54.8	67.7	46.9	1406	KRIEGER KAH-30M46	1.3,4.5
BC-2	1646	190	1465	1.5	2.98	2649	1.32	208	3	60	57.1	61.8	93.9	2	3.8	58.5	3.8	5	10	77.2/65.7	54.5/53.7	58.6	40.3	1225	KRIEGER KAH-30K36	1.2,4.5
REMARKS:																										
1. PROVIDE FACTORY MOUNTED DISCONNECT SWITCH																										
2. PROVIDE ACCESS DOORS AND COIL CONNECTIONS ON LEFT SIDE																										
3. PROVIDE ACCESS DOORS AND COIL CONNECTIONS ON RIGHT SIDE																										
4. PROVIDE 2" SPRING ISOLATORS ON SUPPLY FANS																										
5. FILTER MEDIA MERV 9 WITH 0.3" ALLOWANCE ADDED FOR MERV 13																										

- REMARKS:
1. PROVIDE FACTORY MOUNTED DISCONNECT SWITCH
 2. PROVIDE ACCESS DOORS AND COIL CONNECTIONS ON LEFT SIDE
 3. PROVIDE ACCESS DOORS AND COIL CONNECTIONS ON RIGHT SIDE
 4. PROVIDE 2" SPRING ISOLATORS ON SUPPLY FANS
 5. FILTER MEDIA MERV 8 WITH 0.3" ALLOWANCE ADDED FOR MERV 13

AIR COOLED CONDENSER UNIT SCHEDULE

MARK	LOCATION	SERVES	NOMINAL TONS	NET CAPACITY (MBH)	SENSIBLE CAPACITY (MBH)	ELECTRICAL DATA			REFRIGERANT	SEER/EER	OPERATING WEIGHT (LBS.)	TYPICAL UNIT MFG & MODEL NO.	REMARKS:
						VOLT/Ø	MCA	POWER (KW)					
ACCU-1	ROOF	BC-1	5	56.7	39.8	208Ø	21.2	4.56	R-410A	14/12	205	YORK YCD06831S	1
ACCU-2	ROOF	BC-2	4	44.2	39.2	208Ø	18.4	4.1	R-410A	13.75/12.75	200	YORK YCD46831S	1
<u>REMARKS:</u> <div>1. PROVIDE FACTORY MOUNTED DISCONNECT. 2. 3.</div>													

- REMARKS:
1. PROVIDE FACTORY MOUNTED DISCONNECT.
 - 2.
 - 3.

GRAVITY VENTILATOR SCHEDULE

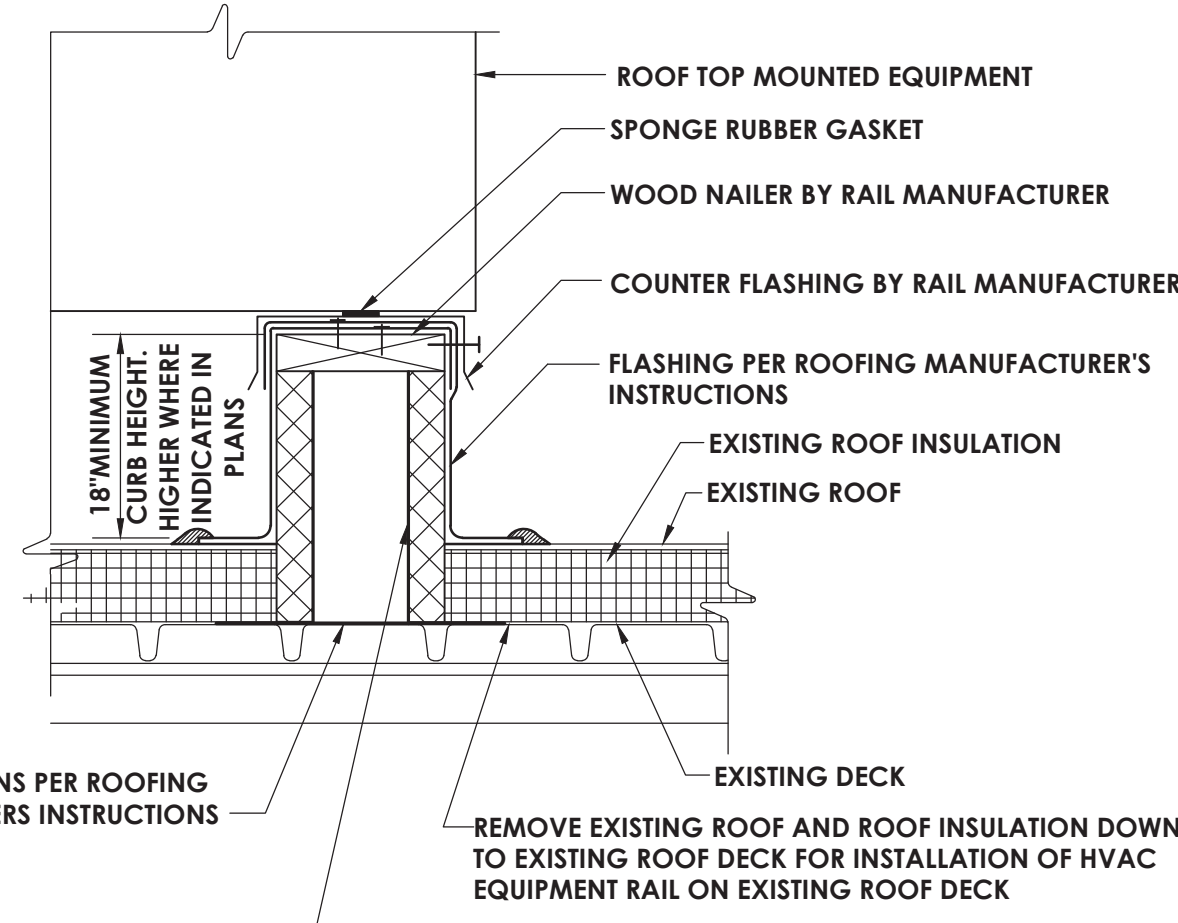
MARK	LOCATION	SERVICE	THROAT AREA (SQ. FT.)	HOOD AREA (SQ. FT.)	AIR FLOW (CFM)	SP (IN. W.G.)	TYPICAL UNIT MFG & MODEL NO.	REMARKS
GV-1	ROOF	BC-1 AND BC-2 OUTSIDE AIR	1	4.7	600	0.026	GREENHECK GRSI-16	1, 2

- REMARKS:
1. PROVIDE WITH WIRE MESH BIRD SCREEN
 2. PROVIDE MANUFACTURER'S 18-INCH INSULATED ROOF CURB

REGISTERS, GRILLES, AND DIFFUSERS

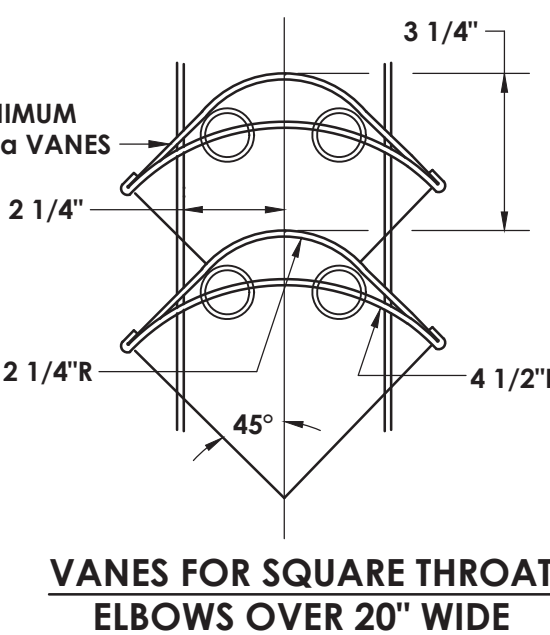
MARK	APPLICATION	MATERIAL	TYPE	FINISH	FACE SIZE	DESIGN EQUIP.	REMARKS
D1	SUPPLY	STEEL	LAY IN	WHITE	24X24	PRICE SCD	-
D2	SUPPLY	STEEL	LAY IN	WHITE	12X12	PRICE SCD	-
D3	SUPPLY	STEEL	SIDE WALL	WHITE	SEE PLANS	PRICE S10	-
G1	RETURN/EA	STEEL	LAY IN	WHITE	24X24	PRICE PDOR	-
G2	RETURN/EA	STEEL	LAY IN	WHITE	12X12	PRICE PDOR	-
G3	RETURN/EA	STEEL	SIDE WALL	WHITE	SEE PLANS	PRICE S30	-

- REMARKS:

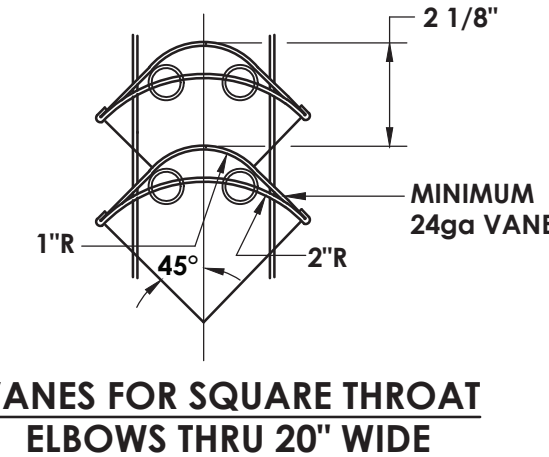


- FACTORY MANUFACTURED EQUIPMENT RAILS
- NOTE:
1. INSTALL ROOFING PER NRCA RECOMMENDATIONS. COORDINATE WITH OWNER AND EXISTING ROOFING MANUFACTURER TO MAINTAIN WARRANTY.
 2. REMOVE EXISTING ROOFING AND ROOF INSULATION DOWN TO EXISTING ROOF DECK AS NECESSARY FOR INSTALLATION OF HVAC EQUIPMENT CURB. CUT OPENING IN EXISTING ROOF DECK AND PROVIDE STRUCTURAL SUPPORT FOR MECHANICAL EQUIPMENT AND OPENING EDGE. CRICKET AWAY FROM RAILS FOR DRAINAGE.
 3. SECURE EQUIPMENT TO RAIL WITH CADMIUM PLATED HARDWARE.
 4. INSTALLATION OF ALL MECHANICAL EQUIPMENT, RAILS AND CURBS SHALL CONFORM TO NYS BUILDING CODE SECTION 1604.9 AND THE WIND RESTRAINT REQUIREMENTS OF THIS PROJECT.

7 EQUIPMENT, DUCT AND PIPING ROOF RAILS
H800 SCALE: NOT TO SCALE

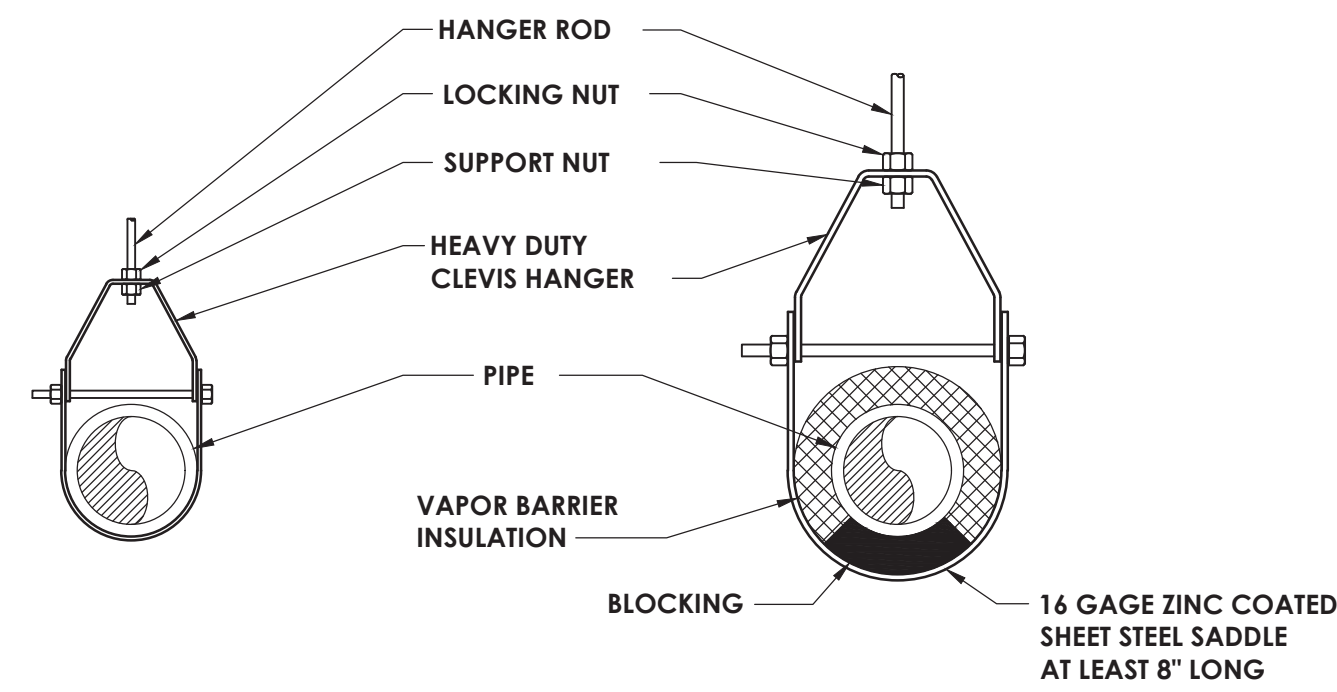


VANES FOR SQUARE THROAT ELBOWS OVER 20" WIDE



VANES FOR SQUARE THROAT ELBOWS THRU 20" WIDE

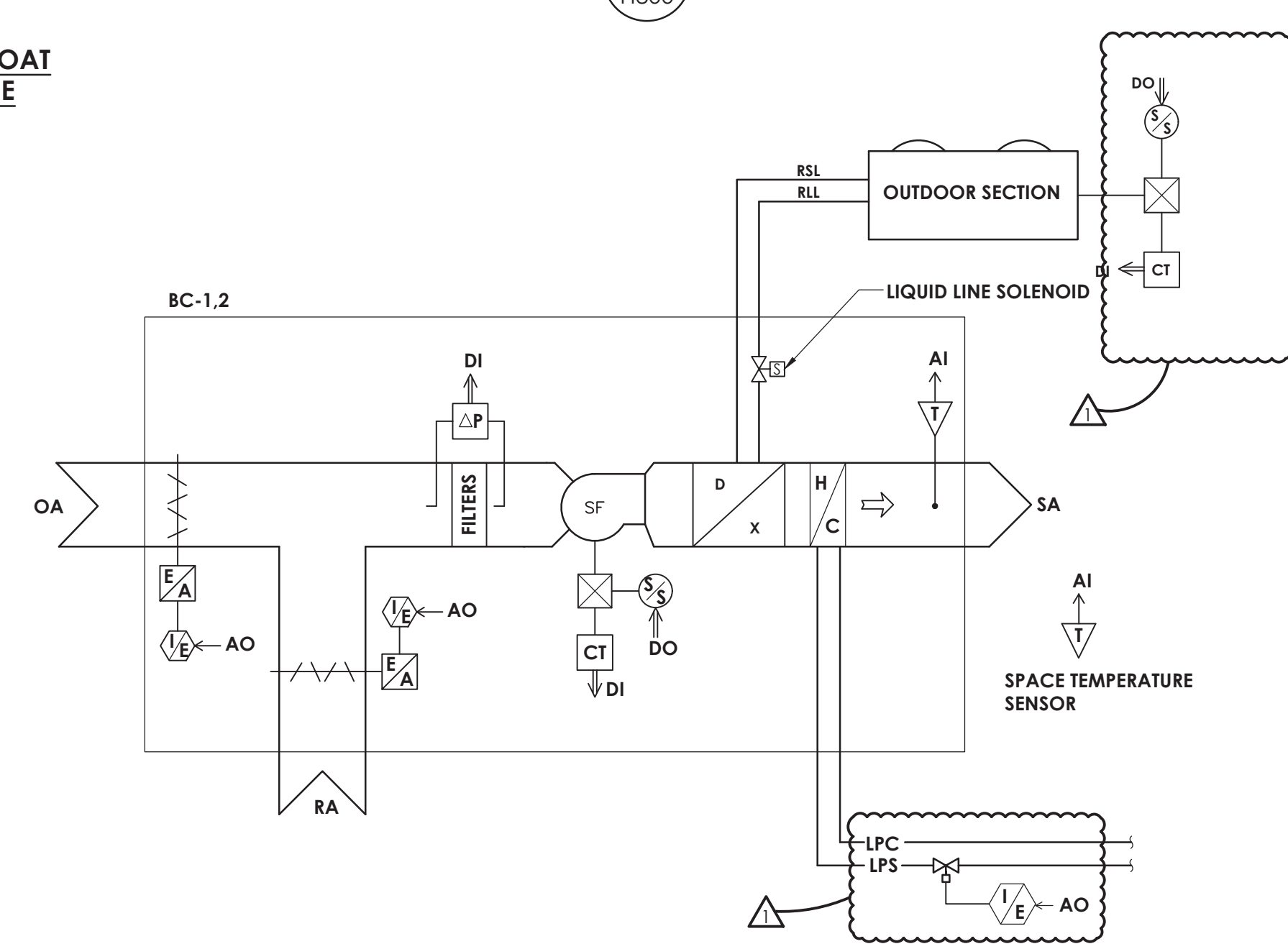
10 TYPICAL TURNING VANE DETAIL
H800 NOT TO SCALE



CLEVIS HANGER SINGLE HORIZONTAL RUNS NO VAPOR BARRIER INSULATION

CLEVIS HANGER SINGLE HORIZONTAL RUNS WITH VAPOR BARRIER INSULATION

11 PIPE SUPPORT DETAIL
H800 NOT TO SCALE



DAMPERS TO BE PROVIDED BY UNIT MANUFACTURER.
LOW VOLTAGE ACTUATORS TO BE PROVIDED BY CONTROLS VENDOR.

15 FAN COIL CONTROL SCHEMATIC - STEAM BC-1.2
H800 NOT TO SCALE