

© 2015, Kevin P. Hengst, Architect, All Rights Reserved. No part of this document may be reproduced, stored in a retrieval system, or transmitted, in any form or by any means, electronic, mechanical, photocopying, recording, or by any information storage and retrieval system, without the prior written permission of Kevin P. Hengst, Architect. The engineer or architect disclaims responsibility for these plans and specifications if they are altered or used in whole or in part at any other site or project than the one for which they were specifically prepared. THESE PLANS ARE NOT TO BE REPRODUCED, CHANGED OR COPIED WITHOUT THE EXPRESS WRITTEN PERMISSION OF KEVIN P. HENGST, ARCHITECT.

D

C

B

A

INTERIOR METAL STUD SCHEDULE

SIZE	MILS	TYPE	16" O.C.	24" O.C.
			MAX. UNSUPPORTED HT	NOTES 1,2,3
3 5/8"	18 mils	CSJ	12'-7"	11'-0"
	30 mils	CSJ	15'-5"	13'-5"
	43 mils	CSJ	19'-1"	16'-8"
6"	30 mils	CSJ	23'-2"	20'-3"
	43 mils	CSJ	28'-4"	24'-9"

- NOTES:
- BASED ON INTERIOR NONBEARING PARTITIONS WITH ONE LAYER OF GYPSUM BOARD EACH SIDE. USE MILS, TYPE AS SCHEDULED UNLESS NOTED OTHERWISE ON DRAWINGS.
 - RUNNER TRACK MILS TO MATCH STUD.
 - ALL WALLS SHALL HAVE 1-1/2" X16 GA, COLD ROLLED CHANNEL HORIZONTAL BRIDGING SPACED AT 6'-0".
 - HEADERS SHALL BE BUILT UP TYPE W(2)-12"X12GA BOX HEADER. PROVIDE 12"X12GA WEB STIFFENERS @ EACH END. ALL HEADERS SHALL BE SUPPORTED BY (2) TRIMMER STUDS ADJACENT TO (2) FULL HEIGHT STUDS, UNLESS NOTED OTHERWISE.

SYMBOLS LEGEND

SECTION TAG:	00/A0.0	ROOM TAG:	ROOM NAME
DETAIL TAG:	00 A0.0	PARTITION TYPE:	
DOOR TAG:	#	DATUM TAG:	FINISH FLOOR 0'-0" A.F.F.
SHEET NOTE:	#	INTERIOR ELEVATION TAG:	00 X0.0
FINISH TAG:	XX-0		

ACCESSIBILITY STANDARDS

SIGNAGE SHOULD COMPLY W/ RELEVANT GUIDELINES AS FOLLOWS.

- ALL PERMANENT ROOM AND SPACE IDENTIFICATION SIGNAGE SHALL COMPLY WITH SECTIONS 1 THROUGH 5.
- ALL DIRECTIONAL AND INFORMATIONAL SIGNAGE SHALL COMPLY WITH SECTIONS 1 & 2.
- ALL IDENTIFICATION, INFORMATIONAL OR DIRECTIONAL SIGNAGE ABOUT ACCESSIBLE ELEMENTS AND FEATURES SHALL COMPLY WITH SECTIONS 1 THROUGH 5.

SIGNAGE DESIGN CRITERIA:

- FINISH AND CONTRAST:**
CHARACTER, SYMBOLS, BACKGROUNDS SHALL HAVE A NON-GLARE FINISH. CHARACTER & SYMBOLS SHALL CONTRAST A MIN. OF 70% W/ THEIR BACKGROUND.
LRV FINISH (LIGHT REFLECTANCE VALUE) OF MATERIAL FINISHES SHALL BE ASTM E1349-90 OR EQUAL.
- PROPORTIONS:**
CHARACTERS ARE TO HAVE A WIDTH-TO-HEIGHT RATIO OF 3:5 TO 1:1.
CHARACTER STROKE WIDTH-TO-HEIGHT OF 1:5 TO 1:10.
- RAISED CHARACTERS AND PICTORAL SIGN SYMBOLS:**
CHARACTER TYPE:
1/32" RAISED (MIN.)
SANS SERIF UPPERCASE WITH GRADE 2 BRAILLE.
CHARACTER SIZE:
MIN 5/8" AND MAX. 2" HIGH
PICTOGRAMS:
ACCOMPANY W/ VERBAL DESCRIPTION PLACED DIRECTLY BELOW THE PICTOGRAM.
OUTSIDE DIMENSION OF PICTOGRAM FIELD TO BE MIN. 6" HEIGHT.
CHARACTER PLACEMENT:
CHARACTERS AND BRAILLE SHALL BE IN HORIZONTAL FORMAT
BRAILLE SHALL BE PLACED 3/8" (MIN.) & 1/2" (MAX.) DIRECTLY BELOW THE TACTILE CHARACTERS (FLUSH LEFT OR CENTER).
IF TACTILE TEXT IS MULTILINE, ALL BRAILLE SHALL BE PLACED TOGETHER BELOW ALL LINES OF TACTILE TEXT.
- BRAILLE:**
CONTRACTED GRADE 2 BRAILLE SHALL BE USED WHEREVER APPLICABLE
STANDARDS REQUIRE BRAILLE.
DOTS SHALL BE 1/10" ON CENTERS IN EACH CELL W/ 2/10" SPACE BETWEEN CELLS, MEASURED FROM THE SECOND COLUMN OF DOTS IN THE FIRST CELL TO THE FIRST COLUMN OF DOTS IN THE SECOND CELL.
DOTS SHALL BE RAISED A 1/40" MIN ABOVE THE BACKGROUND.
DOTS SHALL BE DOMED OR ROUNDED.
- MOUNTING LOCATION AND HEIGHT:**
INSTALL ON THE WALL ADJACENT TO THE LATCH SIDE OF THE DOOR.
WHERE NO WALL SPACE EXISTS ON THE LATCH SIDE OF THE DOOR (INCL. DOUBLE LEAFS), PLACE SIGN ON THE NEAREST ADJACENT WALL, PREFERABLY TO THE RIGHT SIDE.
HEIGHT: 60" ABOVE FINISH FLOOR TO THE CENTERLINE OF THE SIGN.
LOCATION: PLACE SO THE APPROACHING PERSON MAY APPROACH WITHIN 3" OF SIGNAGE WITHOUT ENCOUNTERING PROTRUDING OBJECTS OR STANDING WITHIN THE SWINGING DOOR PATH.

DOORS

- LATCHES AND LOCKSETS: PROVIDE LEVER TYPE, PUSH-PULL OR PANIC TYPE HARDWARE 30 INCHES TO 44 INCHES ABOVE FLOOR.
- MAXIMUM FORCE TO OPERATE DOORS SHALL BE 5 LBS. PRESSURE. FIRE DOORS SHALL BE 15 LBS. MAXIMUM.
- FLOOR SHALL BE LEVEL AT ALL DOORS.
- THRESHOLDS: THE FLOOR OR LANDING SHALL NOT BE MORE THAN 1/2-INCH LOWER THAN THE THRESHOLD OF THE DOOR WAY. CHANGE IN LEVEL BETWEEN 1/4-INCH AND 1/2-INCH SHALL BE BEVELED WITH A SLOPE NO GREATER THAN 1:2. (SEE BELOW).
- LEVEL FLOOR OR LANDING: THERE SHALL BE A LEVEL AND CLEAR AREA ON EACH SIDE ON AN EXIT DOOR. THE LEVEL AREA SHALL BE AS ILLUSTRATED IN FIGURE A. THE SPACE BETWEEN THE TWO CONSECUTIVE DOOR OPENING (VESTIBULE) SHALL PROVIDE 48-INCHES OF CLEAR SPACE FROM ANY DOOR OPENING INTO SUCH SPACE. (SEE BELOW).
- DOOR WIDTH AND HEIGHT: 3-FEET WIDE AND 6-FEET-8-INCHES HIGH. CLEAR WIDTH: 32-INCHES MINIMUM WITH DOOR OPEN 90-DEG. MEASURED FROM THE FACE OF THE DRR TO THE OPPOSITE SIDE.
- THE BOTTOM 10 INCHES OF ALL DOORS EXCEPT AUTOMATIC AND SLIDING SHALL HAVE A SMOOTH UNINTERRUPTED SURFACE TO ALLOW THE DOOR TO BE OPENED BY A WHEELCHAIR FOOT - REST WITHOUT CREATING A TRAP OR HAZARDOUS CONDITION.

EACH GRADE LEVEL EXTERIOR DOOR SHALL BE IDENTIFIED BY A TACTILE EXIT WITH THE WORDS 'EXIT'.

EACH EXIT DOOR THAT LEADS DIRECTLY TO A GRADE-LEVEL EXTERIOR EXIT MY MEANS OF A STAIRWAY OR RAMP SHALL BE IDENTIFIED BY A TACTILE EXIT SIGN WITH THE FOLLOWING WORDS AS APPROPRIATE:

- 'EXIT STAIRS DOWN'
- 'EXIT RAMP DOWN'
- 'EXIT STAIR UP'
- 'EXIT RAMP UP'

EACH EXIT DOOR THAT LEADS DIRECTLY TO A GRADE-LEVEL EXTERIOR EXIT BY MEANS OF AN EXIT ENCLOSURE OR AN EXIT PASSAGEWAY SHALL BE IDENTIFIED BY A TACTILE EXIT SIGN WITH THE WORDS 'EXIT ROUTE'.

EACH EXIT ACCESS DOOR FROM AN INTERIOR ROOM OR AREA TO A CORRIDOR OR HALLWAY THAT IS REQUIRED TO HAVE A VISUAL EXIT SIGN SHALL BE IDENTIFIED BY A TACTILE EXIT SIGN WITH THE WORDS 'EXIT ROUTE'.

EACH EXIT DOOR THROUGH A HORIZONTAL EXIT SHALL BE IDENTIFIED BY A SIGN WITH THE WORDS 'TO EXIT'.

PROTRUDING OBJECTS

- PROJECTIONS FROM WALLS WITH A LEADING EDGE BETWEEN 27 INCHES AND 80 INCHES ABOVE FLOOR MAY PROJECT 4 INCHES MAXIMUM. LEADING EDGE AT OR BELOW 27 INCHES MAY PROJECT ANY AMOUNT. FREESTANDING PROJECTIONS WITH LEADING EDGE BETWEEN 27 INCHES AND 80 INCHES ABOVE FLOOR MAY PROJECT 12 INCHES MAX. PROJECTIONS MAY NOT REDUCE MANEUVERING SPACE, OR CLEAR WIDTH OF AN ACCESSIBLE ROUTE.
- PROVIDE MINIMUM OF 80 INCHES HEAD ROOM.

ELECTRICAL

- ELECTRICAL RECEPTACLES (15, 20, AND 30 AMPS) SHALL BE AT LEAST 15 INCHES ABOVE THE FLOOR.
- SWITCHES AND CONTROLS FOR LIGHTS, APPLIANCES, COOLING, HEATING AND VENTILATING EQUIPMENT SHALL BE NOT LESS THAN 36" AND NO MORE THAN 48" A.F.F.
- FIRE ALARM INITIATING DEVICES SHALL BE 48" ABOVE THE FLOOR, GROUND OR SIDEWALK.

SANITARY FACILITIES

- GEOMETRIC SYMBOLS
- SYMBOLS
A) MEN'S SANITARY FACILITIES SHALL BE IDENTIFIED BY AN EQUILATERAL TRIANGLE 1/4" THICK WITH SIDE 12" LONG AND VERTEX POINTING UPWARD.
B) WOMEN'S SANITARY FACILITIES SHALL BE IDENTIFIED BY A CIRCLE 1/4" THICK, 12" DIAMETER.
C) UNISEX SANITARY FACILITIES SHALL BE IDENTIFIED BY A CIRCLE 1/4" THICK, 12" DIAMETER, WITH A 1/4" THICK EQUILATERAL TRIANGLE SUPERIMPOSED ON THE CIRCLE AND WITHIN THE 12 INCH DIAMETER.
- GEOMETRIC (CIRCLE AND TRIANGLE) SYMBOLS ON SANITARY DOORS SHALL BE CENTERED ON THE DOOR AT A HEIGHT OF 60" AND THEIR COLOR AND CONTRAST SHALL BE DISTINCTLY DIFFERENT FROM THE COLOR AND CONTRAST OF THE DOOR.
- RAISED LETTERS SHALL BE PROVIDED AND SHALL BE ACCOMPANIED BY BRAILLE IN CONFORMANCE WITH SECTION 1117B.5.6. THEY SHALL BE INSTALLED ON THE WALL ADJACENT TO THE DOOR. WHERE THERE IS NO WALL SPACE ON THE LATCH SIDE, INCLUDING AT DOUBLE LEAF DOORS, SIGNS SHALL BE PLACED ON THE NEAREST ADJACENT WALL, PREFERABLY ON THE RIGHT. MOUNTING HEIGHT SHALL BE 60 INCHES ABOVE THE FINISH FLOOR TO THE CENTER OF THE SIGN. MOUNTING LOCATION SHALL BE DETERMINED SO THAT A PERSON MAY APPROACH WITHIN 3 INCHES OF SIGNAGE WITHOUT ENCOUNTERING PROTRUDING OBJECTS OR STANDING WITHIN THE SWING OF THE DOOR.
SECTION 1117B.5.6
A) LETTER TYPE: LETTERS AND NUMBERS ON SIGNS SHALL BE RAISED 1/32 INCH (0.794mm) MINIMUM AND SHALL BE SANS-SERIF UPPERCASE CHARACTERS ACCOMPANIED BY GRADE 2 BRAILLE.
B) SYMBOL SIZE: RAISED CHARACTERS OR SYMBOLS SHALL BE MINIMUM OF 5/8 INCH (15.9mm) HIGH.
C) PICTORAL SYMBOL SIGNS (PICTOGRAMS): PICTORAL SYMBOL SIGNS SHALL BE ACCOMPANIED BY THE EQUIVALENT VERBAL DESCRIPTION PLACED DIRECTLY BELOW THE PICTOGRAM. THE BORDER DIMENSION OF THE PICTOGRAM SHALL BE A MINIMUM OF 6 INCHES (152mm) IN HEIGHT.

- ACCESSIBLE COMPARTMENT DOORS SHALL BE EQUIPPED WITH AN AUTOMATIC CLOSING DEVICE. THE INSIDE AND OUTSIDE OF THE COMPARTMENT DOOR SHALL BE EQUIPPED WITH A LOOP OR U-SHAPED HANDLE IMMEDIATELY BELOW THE LATCH. THE LATCH SHALL BE FLIP-OVER STYLE, SLIDING OR OTHER HARDWARE NOT REQUIRING THE USER TO GRASP OR TWIST.
- WATER CLOSET: FLUSH CONTROLS ARE TO BE OPERABLE BY AN OSCILLATING HANDLE WITH A MINIMUM OPERATING FORCE OF 3 LB./F. OR BY A LOW VOLTAGE BUTTON. THE HANDLE OR BUTTON IS TO BE LOCATED ON THE WIDE SIDE SO AS TO BE OPERABLE WITHOUT REQUIRING EXCESSIVE BODY MOVEMENT.
- URINALS: PROVIDE ALL WALL HUNG URINALS WITH ELONGATED RIM. FLUSH CONTROLS ARE TO BE HAND OPERATED AND ARE TO MEET THE SAME REQUIREMENTS AS THE FLUSH CONTROLS FOR THE WATER CLOSET AND ARE TO BE A MAXIMUM OF 44 INCHES ABOVE THE FLOOR. RIM ELEVATION TO BE 17 INCHES A.F.F.
- LAVATORY: PROVIDE AT LEAST 29 INCHES FROM THE FLOOR TO THE BOTTOM OF THE APRON WITH KNEE CLEARANCE UNDER THE FRONT LIP EXTENDING A MINIMUM OF 30 INCHES WIDE. TO 8 INCHES MINIMUM DEPTH AT THE TOP. PROVIDE FOR THE CLEARANCE AT LEAST 30 INCHES WIDE. TO 9 INCHES ABOVE THE FLOOR AND 17 INCHES DEEP FROM THE FRONT OF THE LAVATORY. PROVIDE A CLEAR FLOOR SPACE 30 INCHES X 48 INCHES IN FRONT OF THE LAVATORY. THE CLEAR SPACE MAY EXTEND INTO KNEE AND TOE SPACE UNDERNEATH THE LAVATORY. INSULATE HOT WATER AND DRAIN PIPES UNDER LAVATORIES. NO SHARP OR ABRASIVE SURFACES ARE ALLOWED UNDER LAVATORIES. FAUCET CONTROLS ARE REQUIRED TO BE OPEARABLE WITH ONE HAND AND CANNOT REQUIRE GRASPING, PINCHING, OR TWISTING OF THE WRIST. THE FORCE NECESSARY TO OPERATE CONTROLS IS NOT TO EXCEED 5 LB./F.
- ACCESSORIES: WHERE TOWEL, SANITARY NAPKIN AND WASTE RECEPTACLES AND SIMILAR DISPENSING AND DISPOSAL FIXTURES ARE PROVIDED, AT LEAST ONE OF EACH TYPE IS TO BE LOCATED WITH ALL OPERABLE PARTS, INCLUDING COIN SLOTS, WITHIN 40 INCHES FROM THE FLOOR.
- MOUNT MIRRORS WITH THE BOTTOM EDGE NO MORE THAN 40 INCHES A.F.F.
- LOCATE TOILET TISSUE DISPENSERS ON THE WALL WITHIN 12 INCHES OF THE FRONT EDGE OF THE TOILET SEAT.
- THE STRUCTURAL STRENGTH OF GRAB BARS, FASTENERS AND MOUNTING DEVICES SHALL MEET THE SPECIFICATIONS OF THE AMERICAN DISABILITIES ACT AND THE STATE OF CALIFORNIA TITLE 24.
- SINGLE ACCOMMODATION: A CLEAR FLOOR SPACE OF AT LEAST 60 INCHES IN DIAMETER IS REQUIRED FOR SINGLE ACCOMMODATION TOILET ROOMS.

DRINKING FOUNTAINS

CLEAR FLOOR SPACE.

- A CLEAR FLOOR SPACE COMPLYING WITH SECTION 305, POSITIONED FOR A FORWARD APPROACH TO THE DRINKING FOUNTAIN, SHALL BE PROVIDED. KNEE AND TOE SPACE COMPLYING WITH SECTION 306 SHALL BE PROVIDED. THE CLEAR FLOOR SPACE SHALL BE CENTERED ON THE DRINKING FOUNTAIN.

EXCEPTIONS:

- DRINKING FOUNTAINS FOR STANDING PERSONS.
- DRINKING FOUNTAINS PRIMARILY FOR CHILDREN'S USE SHALL BE PERMITTED WHERE THE SPOUT IS 30 INCHES (760 MM) MAXIMUM ABOVE THE FLOOR, AND A PARALLEL APPROACH COMPLYING WITH SECTION 305, CENTERED ON THE DRINKING FOUNTAIN, IS PROVIDED.
- IN EXISTING BUILDINGS, EXISTING DRINKING FOUNTAINS PROVIDING A PARALLEL APPROACH COMPLYING WITH SECTION 305, CENTERED ON THE DRINKING FOUNTAIN, SHALL BE PERMITTED.
- WHERE SPECIFICALLY PERMITTED BY THE ADMINISTRATIVE AUTHORITY, A PARALLEL APPROACH COMPLYING WITH SECTION 305, CENTERED ON THE DRINKING FOUNTAIN, SHALL BE PERMITTED FOR DRINKING FOUNTAINS THAT REPLACE EXISTING DRINKING FOUNTAINS WITH A PARALLEL APPROACH

OPERABLE PARTS

- OPERABLE PARTS SHALL COMPLY WITH SECTION 309.

SPOUT OUTLET HEIGHT.

- SPOUT OUTLETS OF WHEELCHAIR ACCESSIBLE DRINKING FOUNTAINS SHALL BE 36 INCHES (915 MM) MAXIMUM ABOVE THE FLOOR. SPOUT OUTLETS OF DRINKING FOUNTAINS FOR STANDING PERSONS SHALL BE 38 INCHES (965 MM) MINIMUM AND 43 INCHES (1090 MM) MAXIMUM ABOVE THE FLOOR.

SPOUT LOCATION

- THE SPOUT SHALL BE LOCATED 15 INCHES (380 MM) MINIMUM FROM THE VERTICAL SUPPORT AND 5 INCHES (125 MM) MAXIMUM FROM THE FRONT EDGE OF THE DRINKING FOUNTAIN, INCLUDING BUMPERS. WHERE ONLY A PARALLEL APPROACH IS PROVIDED, THE SPOUT SHALL BE LOCATED 31/2 INCHES (89 MM) MAXIMUM FROM THE FRONT EDGE OF THE DRINKING FOUNTAIN, INCLUDING BUMPERS.

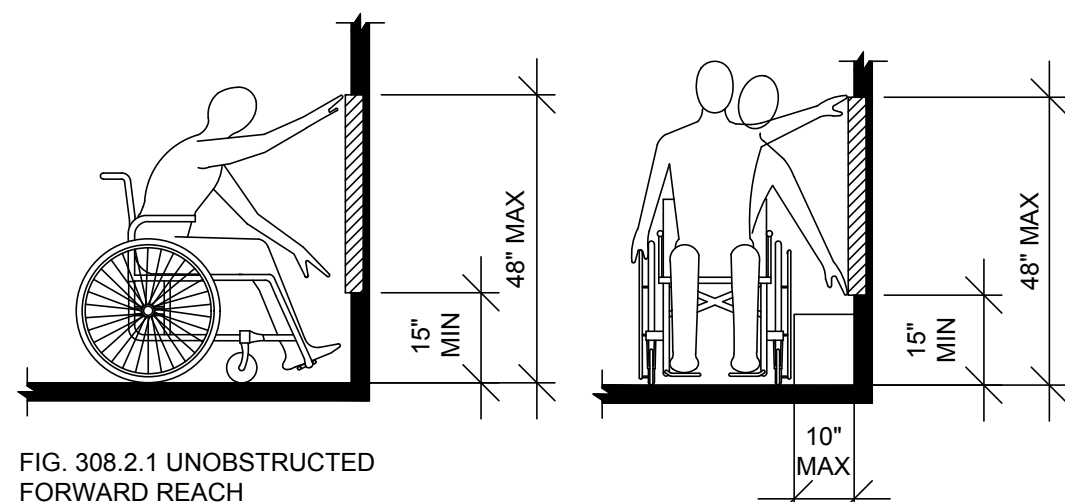


FIG. 308.2.1 UNOBSTRUCTED FORWARD REACH

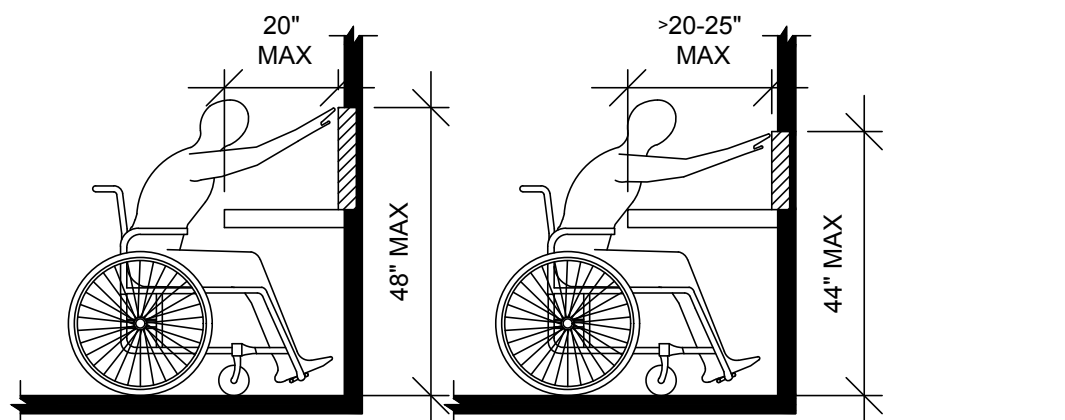


FIG. 308.3.1 UNOBSTRUCTED SIDE REACH

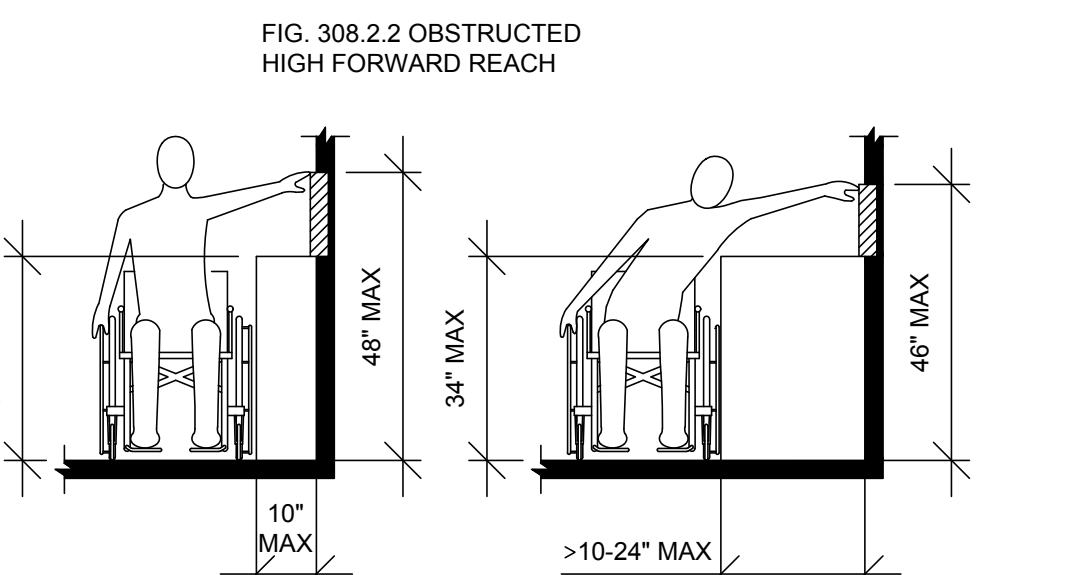


FIG. 308.2.2 OBSTRUCTED HIGH FORWARD REACH

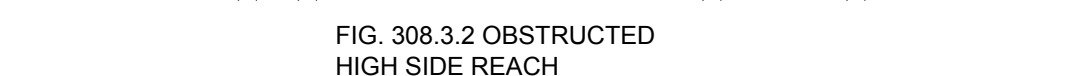


FIG. 308.3.2 OBSTRUCTED HIGH SIDE REACH

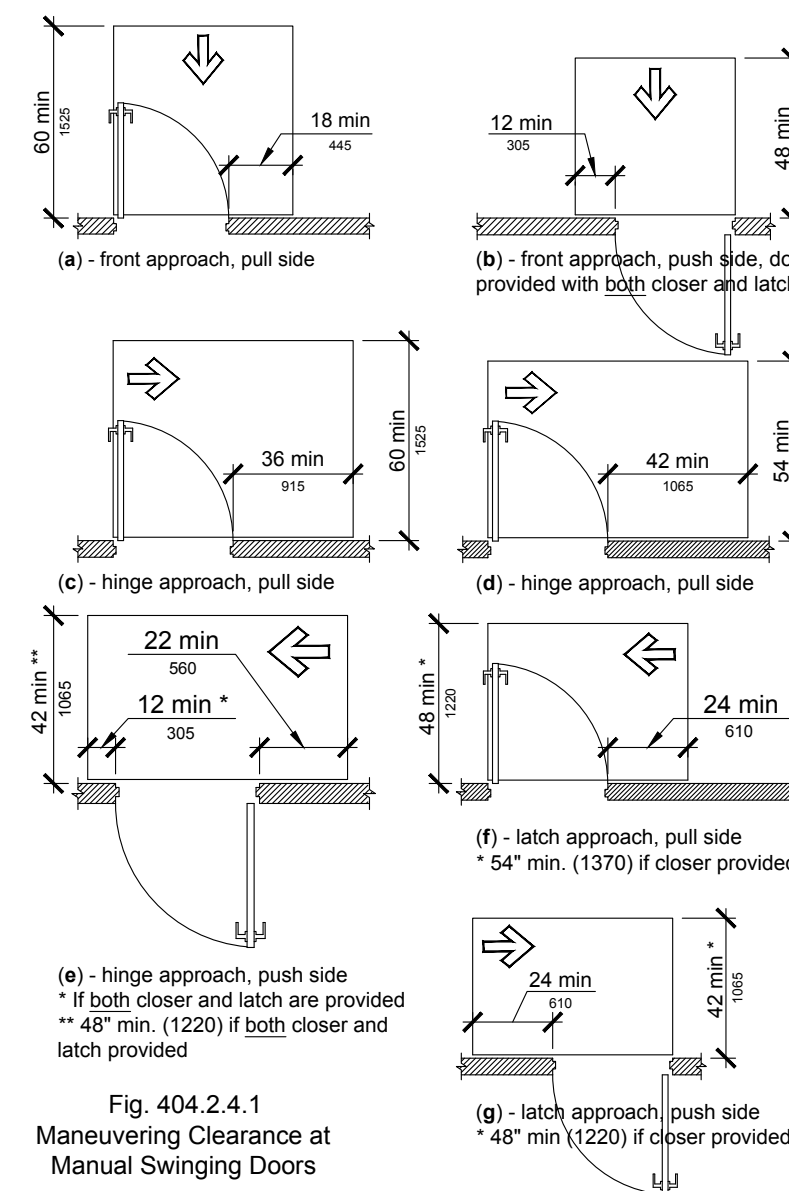


Fig. 404.2.4.1
Maneuvering Clearance at
Manual Swinging Doors

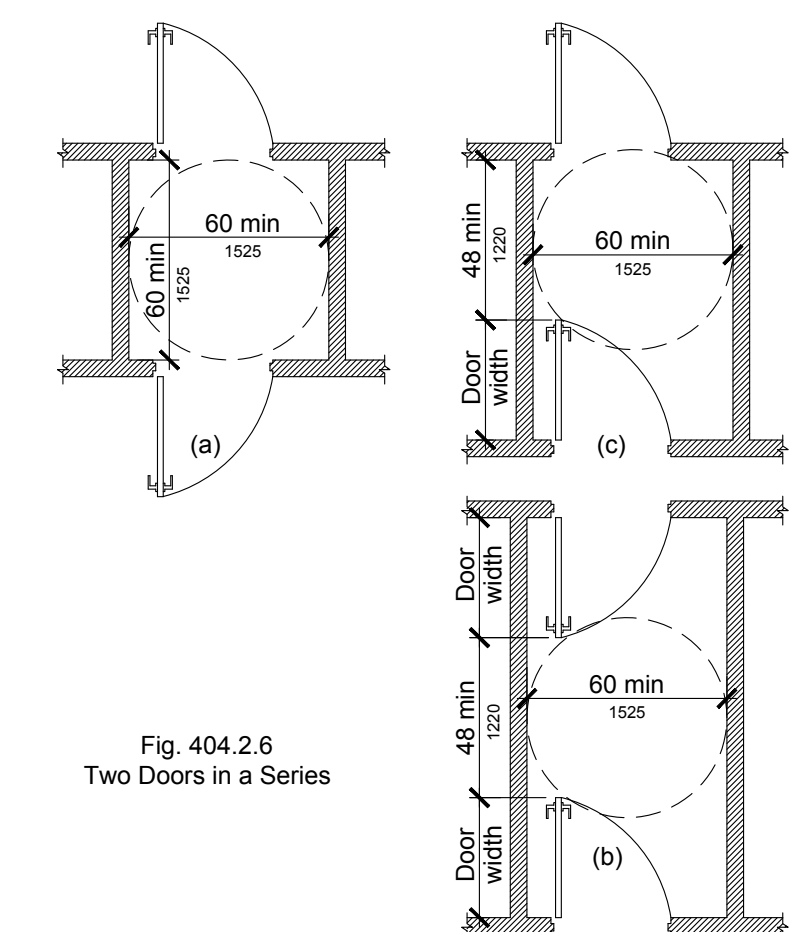


Fig. 404.2.6
Two Doors in a Series

Date
05/28/2021
08/06/2021

Issue
Bid Permit Set
Addendum A



Kevin P. Hengst,
Architect

1250 Old River Road
Cleveland Ohio 44113-1243
Suite 201
Job No. 21256

PET SUPPLIES PLUS
Store #4175 Stony Point, NY
Interior Renovation

22 Holt Dr. Suite 107,
Stony Point, NY 10980

General Information

C 3.0