

LEGEND

	EXISTING DUCTWORK, EQUIPMENT, ETC. TO REMAIN
	EXISTING DUCTWORK, EQUIPMENT, ETC. TO BE REMOVED
	NEW DUCTWORK
	NEW EQUIPMENT
	NEW SUPPLY REGISTER
	NEW RETURN REGISTER
	SQUARE DUCT TURN WITH TURNING VANES
	EXISTING 4-WAY CEILING DIFFUSER
	EXISTING CEILING REGISTER
	NEW 4-WAY CEILING DIFFUSER
	NEW CEILING EXHAUST/RETURN REGISTER
	DUCT MTD. MANUAL AIR VOLUME DAMPER (W/LOCKING DEVICE) OR CABLE OPERATED WHERE DAMPER IS INACCESSIBLE
	MOTORIZED AIR VOLUME DAMPER (WITH ACCESS DOOR)
	SMOKE DAMPER (U.L. APPROVED) & ACCESS DOOR
	FIRE DAMPER (U.L. APPROVED) & ACCESS DOOR
	EXISTING HEAT-PUMP UNIT IDENTIFICATION
	EXISTING ENERGY RECOVERY UNIT IDENTIFICATION
	CUBIC FEET PER MINUTE
	CABLE OPERATED DAMPER FROM AIR OUTLET
	FULL SIZE CONNECTION
	OUTSIDE AIR INTAKE
	FLEXIBLE CONNECTION
	ACCESS DOOR
	FRESH AIR INTAKE
	FIRE DAMPER
	WALL MTD.(5'-2"+/- A.F.F.) TEMPERATURE SENSOR
	EXISTING TEMPERATURE SENSOR
	POINT OF DISCONNECTION
	POINT OF CONNECTION, NEW TO EXISTING
	CUBIC FEET PER MINUTE
	SECTION/DETAIL/ELEVATION/PART NUMBER
	DRAWING NUMBER
	SECTION/ELEVATION IDENTIFICATION

REMOVAL NOTES

REMOVAL NOTES:

- THE SCOPE OF REMOVAL SHOWN ON "REMOVALS" DRAWINGS IS DIAGRAMMATIC ONLY AND INDICATES THE INTENT OF THE WORK TO BE PERFORMED AND NOT THE COMPLETE SCOPE OF DEMOLITION AND/OR REMOVAL WORK. IT SHALL BE THE RESPONSIBILITY OF THIS CONTRACTOR TO REMOVE ANY RELATED MECHANICAL DEVICES EVEN IF NOT SPECIFICALLY INDICATED TO BE REMOVED ON THESE DRAWINGS IN ORDER TO ACCOMMODATE NEW WORK.
- DEVICES SHOWN CROSS HATCHED ON DRAWINGS ARE ITEMS TO BE REMOVED. ANY DEVICES REMOVED SHALL INCLUDE (BUT SHALL NOT BE LIMITED TO) THE REMOVAL OF ALL ASSOCIATED PIPING, CONTROLS, ETC. THAT ARE NOT INCORPORATED IN THE NEW LAYOUT. UNTIL SUCH REMOVAL IS COMPLETE, THIS CONTRACTOR SHALL PERFORM ALL WORK REQUIRED TO INSURE CONTINUITY OF SERVICE TO EXISTING REMAINING EQUIPMENT. NO EXTRAS RELATING TO THE SCOPE OF WORK DESCRIBED WILL BE ALLOWED.
- EQUIPMENT, PIPING, ETC., REQUIRED TO RECONNECT SHALL BE INSTALLED CONCEALED WITHIN THE NEW SUSPENDED CEILINGS, PARTITIONS AND/OR WALLS, FLOORS, NO SURFACE MOUNTED OR EXPOSED EQUIPMENT, PIPING, ETC., SHALL BE PERMITTED, UNLESS SPECIFICALLY INDICATED.
- ALL ITEMS TO BE REMOVED SHALL BE REVIEWED WITH THE OWNER PRIOR TO REMOVAL. OWNER SHALL HAVE FIRST SALVAGE RIGHTS. ITEMS THE OWNER WISHES TO KEEP SHALL BE REMOVED WITH CARE AND STORED AS DIRECTED BY OWNER. ITEMS THE OWNER DOES NOT WISH TO KEEP SHALL BE REMOVED FROM THE SITE AND DISPOSED OF PROPERLY.
- PERFORM INITIAL AIR BALANCING REPORT AND UNIT SERVICE REPORT FOR THE EXISTING ROOF MOUNTED ENERGY RECOVERY UNIT (ERU) AND THE CEILING MOUNTED HEAT PUMP UNITS (HP=1&2) SERVING THE TOILET ROOMS AND ADJACENT CORRIDORS. SUBMIT A DETAILED REPORT WITH ANY UNIT DEFICIENCIES FOR REVIEW AND COURSE OF ACTION BY OWNER.

**PUTNAM VALLEY
MIDDLE SCHOOL
TOILET ROOM
ALTERATIONS**

2018 CAPITAL PROJECTS
PHASE 3

142 PEEKSKILL HOLLOW RD,
PUTNAM VALLEY, NY 10579

KG+D listen
imagine
build

KG+D . ARCHITECTS PC
385 MAIN STREET MOUNT KISCO, NEW YORK 10549
P-914.666.5900 KGDARCHITECTS.COM

BARILE GALLAGHER & ASSOCIATES

CONSULTING ENGINEERS
39 MARBLE AVE. PUTNAM VALLEY, NY 10579
914.328.6060 GENERAL@BGA-ENG.COM WWW.BGA-ENG.COM

NY SED PROJECT CONTROL NO.
48-05-03-04-0-004-016

CONSTRUCTION DOCUMENTS

KEY PLAN

Project North

AREA OF WORK

NOTE: ALL IDEAS, DESIGN ARRANGEMENTS AND PLANS INDICATED OR REPRESENTED BY THIS DRAWING ARE OWNED BY AND ARE THE PROPERTY OF BARILE GALLAGHER & ASSOCIATES, INC. (BGA) AND HAVE BEEN CREATED FOR USE ON THIS PROJECT. NONE OF SUCH IDEAS, DESIGN ARRANGEMENTS OR PLANS SHALL BE USED BY OR DISCLOSED TO ANY PURPOSE WHATSOEVER WITHOUT THE WRITTEN PERMISSION OF BGA.

WRITTEN DIMENSIONS ON THIS DRAWING SHALL HAVE PRECEDENCE OVER SCALED DIMENSIONS. CONTRACTOR SHALL VERIFY ALL ACTUAL DIMENSIONS AND CONDITIONS ON THE JOB AND THE ARCHITECT MUST BE NOTIFIED OF ANY VARIATIONS FROM DIMENSIONS AND CONDITIONS BEFORE PROCEEDING WITH FABRICATION.

ALTERATIONS BY ANY PERSON, IN ANY WAY, OF ANY ITEM CONTAINED ON THIS DOCUMENT, UNLESS ACTING UNDER THE DIRECTION OF THE LICENSED ARCHITECT, ENGINEER, PROFESSIONAL, SEAL IS HEREBY HERETO, IN A VIOLATION OF TITLE 16, SECTION 17-1.5 OF NEW YORK STATE LAW.

COPYRIGHT 2021 BARILE GALLAGHER & ASSOCIATES, INC. ALL RIGHTS RESERVED.

Professional Seal

No.	Date	Issue
1	11/19/21	CONSTRUCTION DOCUMENTS P3

Sheet Title

**FIRST AND SECOND
FLOOR REMOVAL
PLANS**

Job No.	Date
2020-1051	01/14/2021

Scale	Drawn / Checked
AS NOTED	BGA/BGA

Sheet Number

H101

PUTNAM VALLEY
MIDDLE SCHOOL
TOILET ROOM
ALTERATIONS
2018 CAPITAL PROJECTS
PHASE 3
142 PEEKSKILL HOLLOW RD,
PUTNAM VALLEY, NY 10579



KG+D . ARCHITECTS PC
385 MAIN STREET MOUNT KISCO, NEW YORK, 10549
P:914.666.5900 KGDARCHITECTS.COM



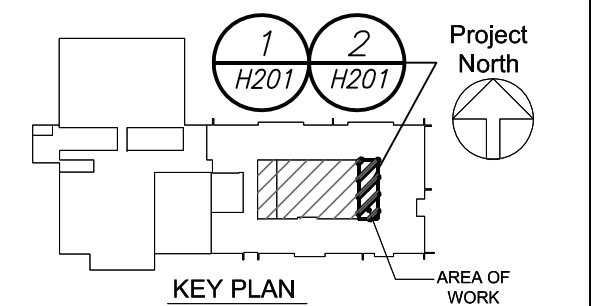
BARILE GALLAGHER & ASSOCIATES

CONSULTING ENGINEERS
39 MARBLE AVE. PLEASANTVILLE, NY 10570
914.328.6060 GENERAL@BGA-ENG.COM WWW.BGA-ENG.COM

NY SED PROJECT CONTROL NO.

48-05-03-04-0-004-016

CONSTRUCTION DOCUMENTS



NOTE: ALL DESIGN, DESIGN ARRANGEMENTS AND PLANS INDICATED OR REPRESENTED BY THIS DRAWING ARE OWNED BY AND ARE THE PROPERTY OF BARILE GALLAGHER & ASSOCIATES, INC. (BGA). NO PART OF THIS DRAWING OR ANY INFORMATION CONTAINED HEREIN SHALL BE REPRODUCED OR TRANSMITTED IN ANY FORM OR BY ANY MEANS, ELECTRONIC OR MECHANICAL, INCLUDING PHOTOCOPYING, RECORDING, OR BY ANY INFORMATION STORAGE AND RETRIEVAL SYSTEM, WITHOUT THE WRITTEN PERMISSION OF BGA.

WRITTEN DIMENSIONS ON THIS DRAWING SHALL HAVE PRECEDENCE OVER SCALE DIMENSIONS. CONTRACTOR SHALL VERIFY ALL ACTUAL DIMENSIONS AND CONDITIONS ON THE JOB AND THE ARCHITECT MUST BE NOTIFIED OF ANY VARIATIONS FROM DIMENSIONS AND CONDITIONS SHOWN. SHOP DETAILS MUST BE SUBMITTED TO THIS OFFICE FOR APPROVAL BEFORE PROCEEDING WITH FABRICATION.

ALTERATIONS BY ANY PERSON IN ANY WAY OF ANY ITEM CONTAINED ON THIS DOCUMENT, UNLESS ACTING UNDER THE DIRECTION OF THE LICENSED ARCHITECT, UNLESS PROFESSIONAL SEAL IS AFFIXED HEREIN, IS A VIOLATION OF TITLE 16, SECTION 26-1.1 OF THE NEW YORK STATE LAW.

COPYRIGHT 2021 BARILE GALLAGHER & ASSOCIATES, INC. ALL RIGHTS RESERVED.

Professional Seal

1 11/19/21 CONSTRUCTION DOCUMENTS P3

No. Date Issue

Sheet Title

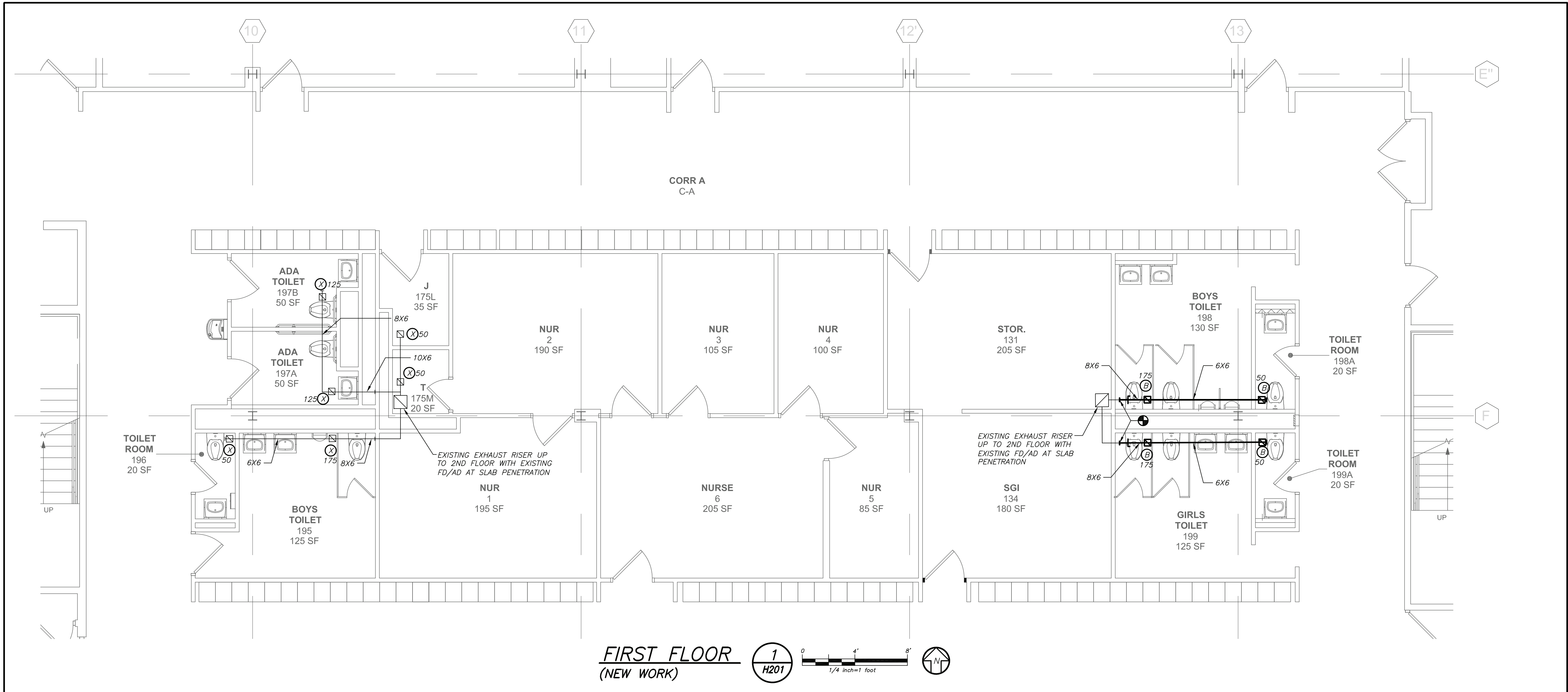
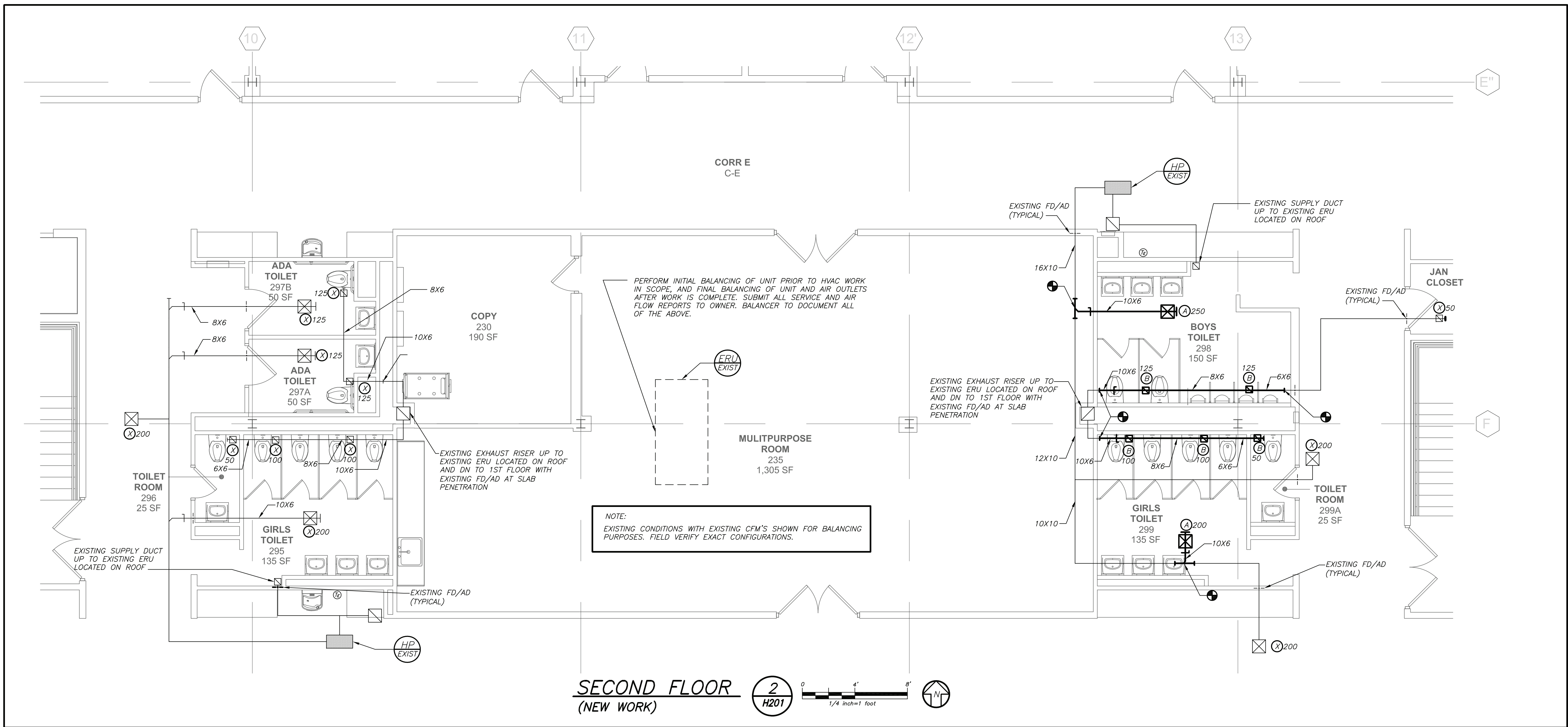
FIRST AND SECOND
FLOOR PLANS

Job No. 2020-1051 Date 01/14/2021

Scale AS NOTED Drawn / Checked BGA/BGA

Sheet Number

H201



BEFORE FABRICATION THIS CONTRACTOR SHALL
VERIFY ALL MEASUREMENTS AND CONDITIONS ON
JOB AND COORDINATE HIS WORK WITH THE WORK
OF ALL OTHER CONTRACTORS

MARK	MODEL No. ①	TYPE	LOCATION	SUPPLY CFM	O.A. CFM	EXT. S.P.	WATER GPM	COOLING ②		HEATING ②		ELECTRICAL DATA			REMARKS
								TOTAL CAP. (MBH)	SENSIBLE (MBH)	TOTAL CAP. (MBH)	MCA	MOCp	ELECTRIC SERVICE		
(HPC EXIST)	-	HORIZONTAL	CEILING	850	350	0.4	4.5	24.8	18.3	20.0		13.0	20	208/1/60	③

NOTES

GENERAL DATA					SUPPLY FAN DATA			RETURN-EXHAUST FAN			ELECTRICAL DATA		REMARKS
MARK	SERVICE	LOCATION	OUTSIDE AIR MIN/MAX	MODEL No. ⑦	CFM	EXT. S.P. IN WG	MOTOR HP	CFM MIN/MAX	EXT. S.P. IN WG	MOTOR HP	MCA	ELECTRIC SERVICE	

NOTES

MARK	TYPE	SERVICE	MODEL No. ①	DIRECTION DISCHARGE	DAMPER TYPE	FINISH	REMARKS
(A)	CEILING DIFFUSER	SUPPLY	EPL-E-1	4-WAY	OPPOSED BLADE	PER ARCH.	REFER TO ②④⑤⑥
(B)	CEILING REGISTER	RETURN	30/S/45	-	↓	↓	REFER TO ②③④⑤⑦
(X)	EXISTING OUTLET						

NOTES

7 RETURN NECK SIZE PER CFM RANGE

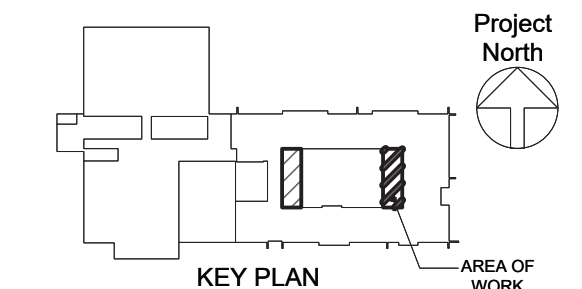
(NOT TO EXCEED 500 fpm)							(NOT TO EXCEED 675 fpm)							
50	100	300	500	800	1200	1500	50	150	250	400	600	800	1100	1200
TO	TO	TO	TO	TO	TO	TO	TO	TO	TO	TO	TO	TO	TO	TO
100	300	500	800	1200	1500	2000	150	250	400	600	800	1100	1200	2400
6x6	9x9	12x12	15x15	18x18	21x21	24x24	6x6	8x8	10x10	12x12	14x14	16x16	18x18	24x24

[illegible]

NY SED PROJECT CONTROL NO.

48-05-03-04-0-004-016

CONSTRUCTION DOCUMENTS



NOTE: ALL IDEAS, DESIGNS, ARRANGEMENTS AND PLANS INDICATED OR REPRESENTED BY THIS DRAWING ARE OWNED BY AND ARE THE PROPERTY OF KAEYER, GARMENT, & DAVIDSON ARCHITECTS, PC (XG&D), AND WERE CREATED FOR USE ON THIS PROJECT. NONE OF SUCH IDEAS, DESIGNS, ARRANGEMENTS OR PLANS SHALL BE USED BY OR DISCLOSED TO ANY PURPOSE WHATSOEVER WITHOUT THE WRITTEN PERMISSION OF (XG&D).

WRITTEN DIMENSIONS ON THIS DRAWING SHALL HAVE PRECEDENCE OVER SCALED DIMENSIONS. CONTRACTOR SHALL VERIFY ALL ACTUAL DIMENSIONS AND CONDITIONS ON THE JOB AND THE ARCHITECT MUST BE NOTIFIED OF ANY VARIATIONS FROM DIMENSIONS AND CONDITIONS SHOWN. SHOP DETAILS MUST BE SUBMITTED TO THIS OFFICE FOR APPROVAL BEFORE PROCEEDING WITH

ALTERATIONS BY ANY PERSON, IN ANY WAY, OF ANY ITEM CONTAINED ON THIS DOCUMENT, UNLESS ACTING UNDER THE DIRECTION OF THE LICENSED ARCHITECT WHOSE PROFESSIONAL SEAL IS AFFIXED HERETO, IS A VIOLATION OF TITLE VII, SECT. 69.5 (b) OF NEW YORK STATE LAW.
COPYRIGHT KAEYER, GARMENT + DAVIDSON ARCHITECTS & ENGINEERS, PC
ALL RIGHTS RESERVED.

Professional Seal

1	11/19/21	CONSTRUCTION DOCUMENTS F
No.	Date	Issue

Job No. 2020-1051	Date 01/14/2021
Scale AS NOTED	Drawn / Checked BGA/BGA

Sheet Number

H301

BEFORE FABRICATION THIS CONTRACTOR SHALL
VERIFY ALL MEASUREMENTS AND CONDITIONS ON
JOB AND COORDINATE HIS WORK WITH THE WORK
OF ALL OTHER CONTRACTORS