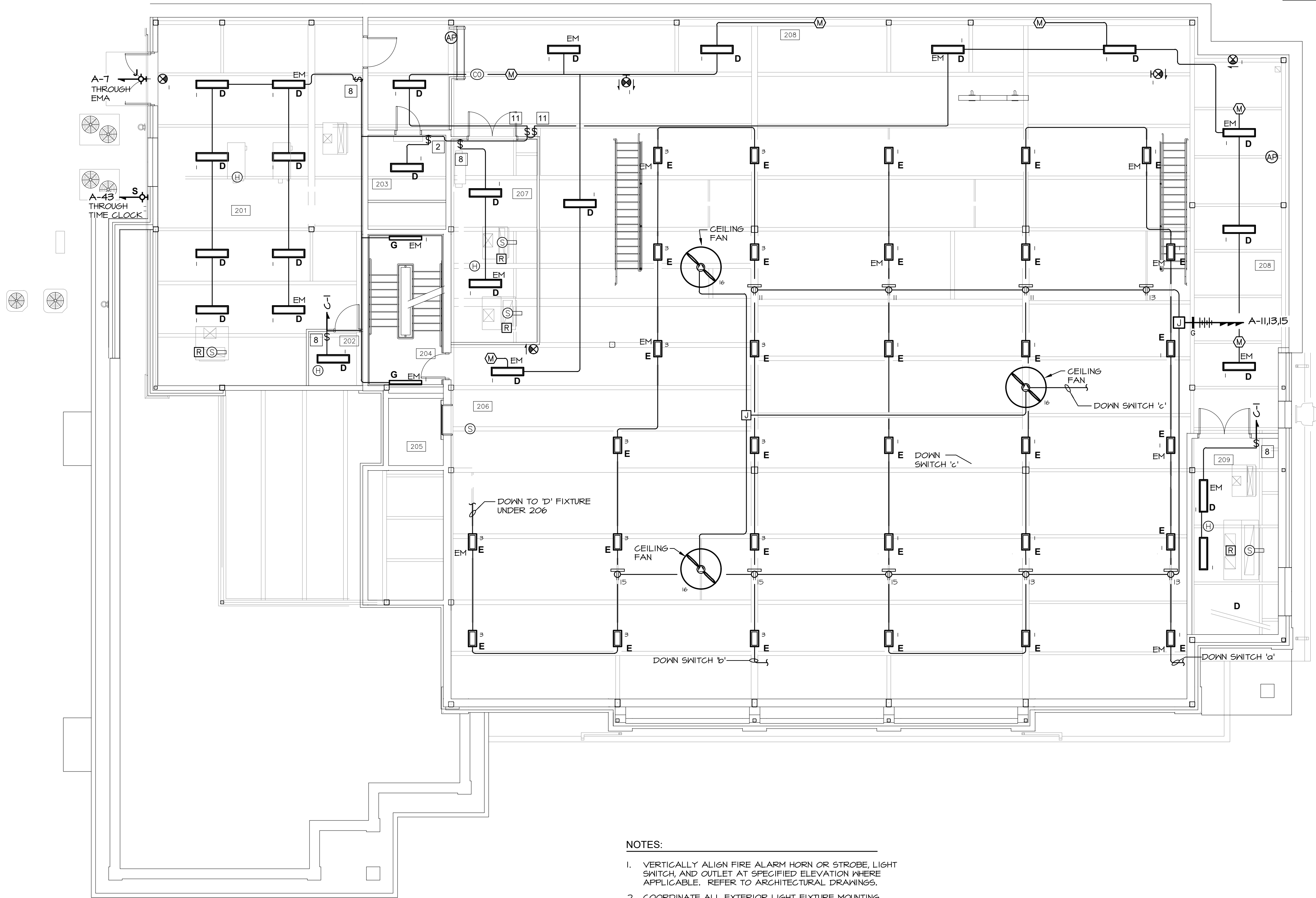


SEISMIC DESIGN FOR ELECTRICAL EQUIPMENT

THE ELECTRICAL SYSTEM SHALL COMPLY WITH THE NEW YORK STATE UNIFORM FIRE PROTECTION AND BUILDING CODE SECTION 1613 AND APPLICABLE PROVISIONS OF ASCE 7 (ARCHITECTURAL, MECHANICAL AND ELECTRICAL COMPONENT SEISMIC DESIGN REQUIREMENTS).
ELECTRICAL CONTRACTOR SHALL HIRE NYS LICENSED PROFESSIONAL ENGINEER TO DESIGN AND PREPARE SHOP DRAWINGS WITH CALCULATIONS FOR EACH ELECTRICAL EQUIPMENT SUPPORT, CONDUIT SUPPORT, MULTIPLE CONDUIT SUPPORT, TRAPEZE AND SEISMIC RESTRAINT. SUBMIT SHOP DRAWINGS WITH CALCULATIONS TO ENGINEER FOR RECORD AND TO LOCAL AUTHORITY HAVING JURISDICTION FOR APPROVAL.

SEISMIC REQUIREMENTS:
IMPORTANCE FACTOR - 1.5
BUILDING USE CATEGORY - IV
SEISMIC DESIGN CATEGORY - C

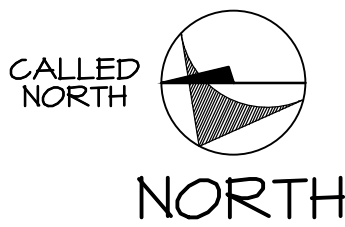


- NOTES:
1. VERTICALLY ALIGN FIRE ALARM HORN OR STROBE, LIGHT SWITCH, AND OUTLET AT SPECIFIED ELEVATION WHERE APPLICABLE. REFER TO ARCHITECTURAL DRAWINGS.
 2. COORDINATE ALL EXTERIOR LIGHT FIXTURE MOUNTING LOCATIONS WITH ARCHITECT IN FIELD.

NOTES

REFER TO LIGHTING CONTROL ROOM SCHEDULE FOR LIGHTING CONTROL EQUIPMENT SPECIFICATION AND OPERATION MODE.

2nd FLOOR
REFLECTED CEILING PLAN
SCALE: 1/8" = 1'-0"



| 2nd FLOOR ROOM LEGEND | | | |
|-----------------------|-----------------------|-----|--------------|
| NO. | NAME | NO. | NAME |
| 201 | BOILER/ELEC ROOM | 206 | MEZZANINE |
| 202 | ELEVATOR MACHINE ROOM | 207 | MECHANICAL 1 |
| 203 | SERVER | 208 | MEZZANINE |
| 204 | STAIR | 209 | MECHANICAL 2 |
| 205 | ELEVATOR | | |

MA

MITCHELL
ASSOCIATES
ARCHITECTS

29 THACHER PARK ROAD
VOORHEESVILLE, NY 12186
(518) 765-4511 FAX (518) 765-2150
WWW.MITCHELL-ARCHITECTS.COM

EMERGENCY
SERVICE

FACILITIES

CONSULTANTS:
INSITE ENGINEERING SURVEYING
& LANDSCAPE ARCHITECTURE, P.C.
3 GARRET PLACE
CARMEL, NY 10512
(845) 225-9640 FAX: (845) 225-4717

CRAIG A. MALONEY P.E.
STRUCTURAL ENGINEERING CONSULTANT
3 BENEDICT COURT
BALLSTON SPA, NY 12020
(518) 584-4844 FAX: (518) 584-4855

GERARD ASSOCIATES
CONSULTING ENGINEERS, P.C.
MECHANICAL, PLUMBING
AND ELECTRICAL
223 MAIN STREET
GOSHEN, NY 10924
(845) 241-1212
GARD011

COPYRIGHT 2012
MITCHELL ASSOCIATES ARCHITECTS
UNAUTHORIZED ALTERATION OR ADDITION
TO THIS DOCUMENT IS A VIOLATION OF LAW

NEW STATION
FOR
PUTNAM VALLEY
FIRE STATION #1

OSCAWANA LAKE ROAD
PUTNAM VALLEY, NEW YORK

| REVISION HISTORY | | |
|------------------|-------------|--|
| DATE | DESCRIPTION | |
| | | |
| | | |
| | | |
| | | |
| | | |
| | | |
| | | |

ELECTRICAL:
2nd FLOOR
REFLECTED CEILING PLAN

SCALE: AS NOTED
DWG. BY: KC
DWG. DATE: 8/14/2020
STATUS: BID DRAWINGS

E601