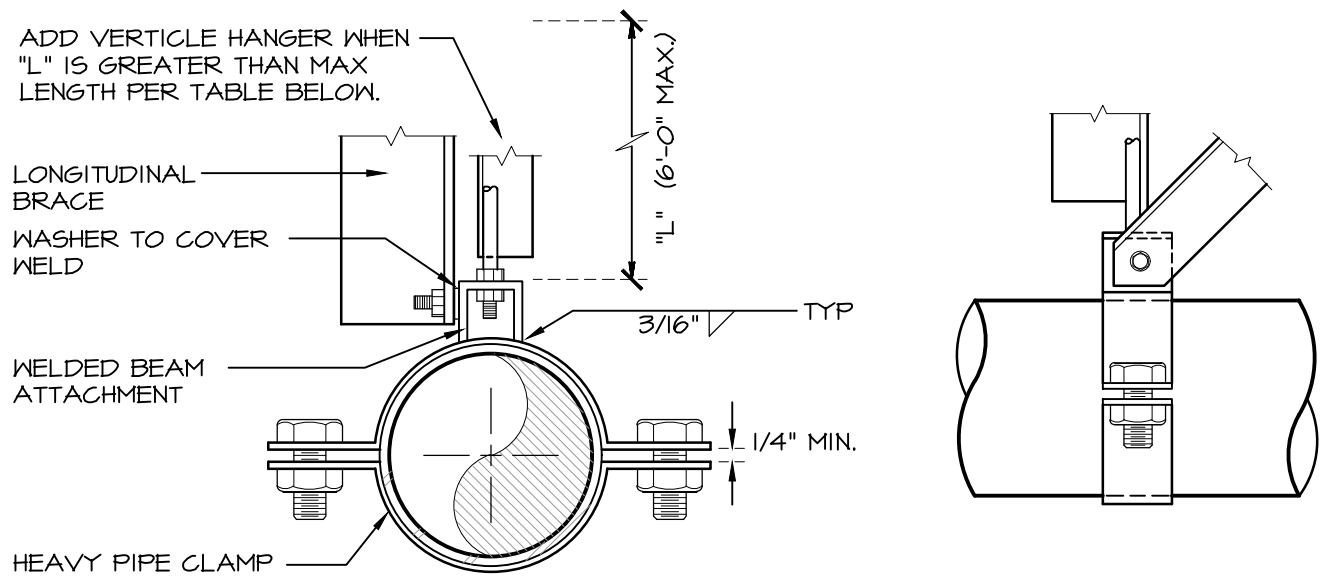
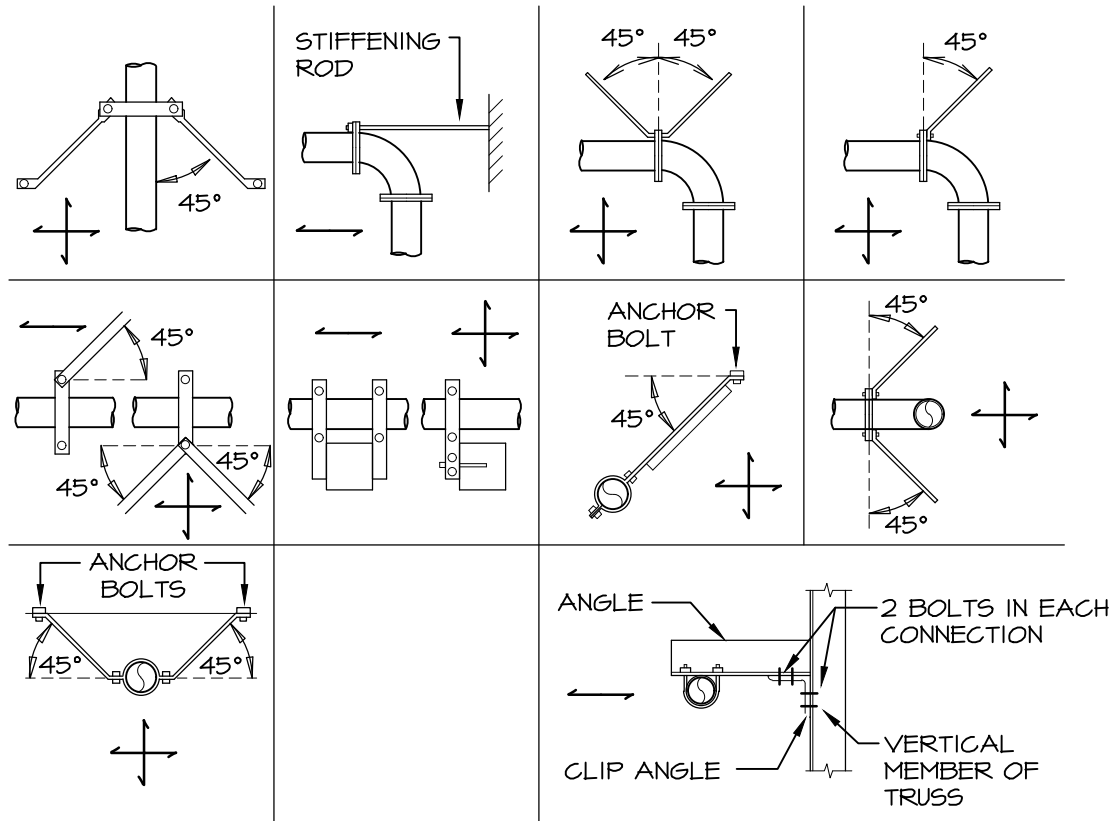


BRACE SPACING	PIPE	ROD	MAX. ROD LENGTH	VERT. HANGERS	TRANSVERSE HANGERS	BOLT
40'	2½"	½"	25"	2 x 2 x 16ga	2½" x 2½" x 16ga	¾"
40'	3'	½"	25"	2 x 2 x 16ga	2½" x 2½" x 16ga	¾"
40'	4'	¾"	31"	2 x 2 x 16ga	2½" x 2½" x 16ga	¾"
40'	6'	¾"	37"	2 x 2 x 16ga	2½" x 2½" x 16ga	¾"
40'	8'	¾"	43"	2 x 2 x 16ga	2½" x 2½" x 16ga	¾"



BRACE SPACING	PIPE	ROD	MAX. ROD LENGTH	VERT. HANGERS	TRANSVERSE HANGERS	BOLT
80'	2½"	½"	25"	2 x 2 x 16ga	2½" x 2½" x 16ga	¾"
80'	3'	½"	25"	2 x 2 x 16ga	2½" x 2½" x 16ga	¾"
80'	4'	¾"	31"	2 x 2 x 16ga	2½" x 2½" x 16ga	¾"
80'	6'	¾"	37"	2 x 2 x 16ga	2½" x 2½" x 16ga	¾"
80'	8'	¾"	43"	2 x 2 x 16ga	2½" x 2½" x 16ga	¾"

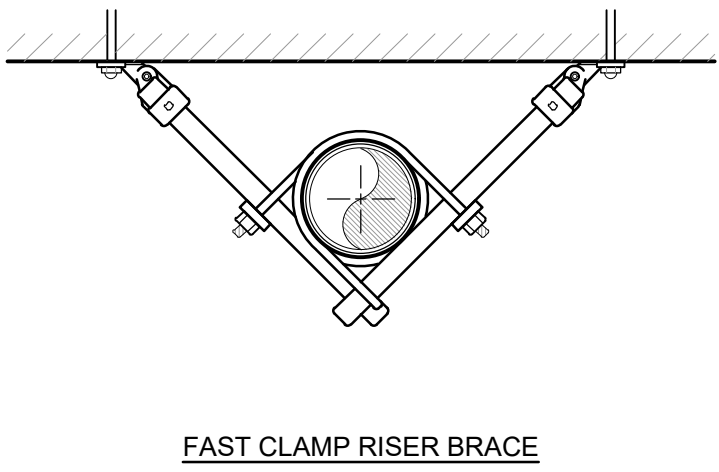


INDICATES DIRECTION OF RESTRAINT

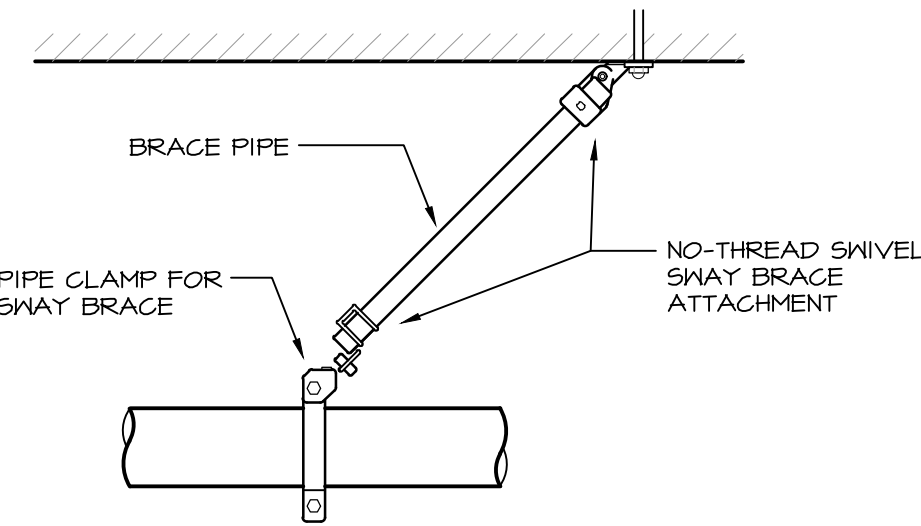
1 TRANSVERSE SEISMIC PIPE BRACING

2 LONGITUDINAL SEISMIC BRACING

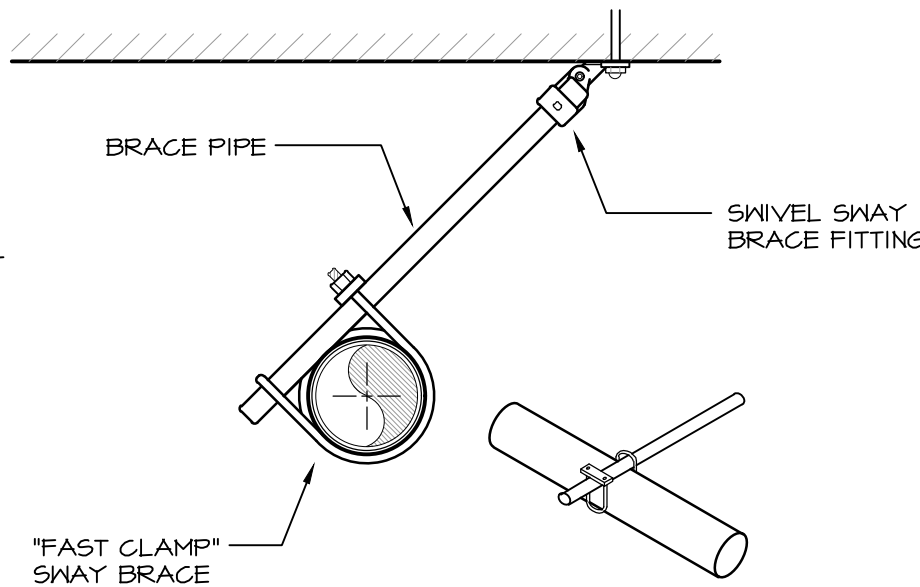
3 SEISMIC SWAY BRACING (GENERAL)



LONGITUDINAL AND LATERAL BRACE LOCATION
LATERAL BRACE LOCATION



LONGITUDINAL EARTHQUAKE BRACE
NON-THREADED BRACE PIPE



LATERAL EARTHQUAKE BRACE
NON-THREADED BRACE PIPE

4 SEISMIC HANGER DETAIL

SEISMIC EQUIPMENT, DUCTWORK AND PIPE HANGER DESIGN

THE HVAC SYSTEM SHALL COMPLY WITH THE NEW YORK STATE UNIFORM FIRE PROTECTION AND BUILDING CODE SECTION 1613 AND APPLICABLE PROVISIONS OF ASCE 7 (ARCHITECTURAL, MECHANICAL AND ELECTRICAL COMPONENT SEISMIC DESIGN REQUIREMENTS).
HVAC CONTRACTOR SHALL HIRE NYS LICENSED PROFESSIONAL ENGINEER TO DESIGN AND PREPARE SHOP DRAWINGS WITH CALCULATIONS FOR EACH EQUIPMENT SUPPORT, CONDUIT SUPPORT, MULTIPLE PIPE SUPPORT, TRAPEZOID AND SEISMIC RESTRAINT. SUBMIT SHOP DRAWINGS WITH CALCULATIONS TO ENGINEER FOR RECORD AND TO LOCAL AUTHORITY HAVING JURISDICTION FOR APPROVAL.

SEISMIC REQUIREMENTS:
IMPORTANCE FACTOR - 1.5
BUILDING USE CATEGORY - IV
SEISMIC DESIGN CATEGORY - C

MA

MITCHELL ASSOCIATES ARCHITECTS

29 THACHER PARK ROAD
VOORHEESVILLE, NY 12186
(518) 765-4511 FAX (518) 765-2450
WWW.MITCHELL-ARCHITECTS.COM

EMERGENCY SERVICE

FACILITIES

CONSULTANTS:

INSITE ENGINEERING SURVEYING & LANDSCAPE ARCHITECTURE, P.C.
3 GARRET PLACE
CARMEL, NY 10512
(845) 225-9640 FAX: (845) 225-9717

CRAIG A. MALONEY P.E.

STRUCTURAL ENGINEERING CONSULTANT
3 BENEDICT COURT
BALLSTON SPA, NY 12020
(518) 584-9844 FAX: (518) 584-9855

GERARD ASSOCIATES

CONSULTING ENGINEERS, P.C.
MECHANICAL, PLUMBING AND ELECTRICAL
223 MAIN STREET
GOSHEN, NY 10924
(845) 241-1212
GARD011

COPYRIGHT 2012
MITCHELL ASSOCIATES ARCHITECTS
UNAUTHORIZED ALTERATION OR ADDITION
TO THIS DOCUMENT IS A VIOLATION OF LAW

NEW STATION FOR

PUTNAM VALLEY FIRE STATION #1

OSCAWANA LAKE ROAD
PUTNAM VALLEY, NEW YORK

REVISION HISTORY

DATE	DESCRIPTION

MECHANICAL: DETAILS

SCALE: AS NOTED
DWG. BY: KC
DWG. DATE: 8/14/2020
STATUS: BID DRAWINGS

M203