

EMERGENCY  
SERVICE

## FACILITIES

CONSULTANTS:

**INSITE ENGINEERING SURVEYING  
& LANDSCAPE ARCHITECTURE, P.C.**  
3 GARRET PLACE  
CARMEL, NY 10512  
(845) 225-0690 FAX: (845) 225-9717

CRAIG A. MALONEY P.E.

STRUCTURAL ENGINEERING CONSULTANT  
3 BENEDICT COURT  
BALLSTON SPA, NY 12020  
(518) 584-9944 FAX: (518) 584-9935

GERARD ASSOCIATES

CONSULTING ENGINEERS, P.C.  
MECHANICAL, PLUMBING  
AND ELECTRICAL  
223 MAIN STREET  
GOSHEN, NY 10924  
(845) 291-1272  
GA09011

COPYRIGHT 2012  
MITCHELL ASSOCIATES ARCHITECTS  
UNAUTHORIZED ALTERATION OR ADDITION  
TO THIS DOCUMENT IS A VIOLATION OF LAW

NEW STATION  
FOR

PUTNAM VALLEY  
FIRE STATION #1

OSCAWANA LAKE ROAD  
PUTNAM VALLEY, NEW YORK

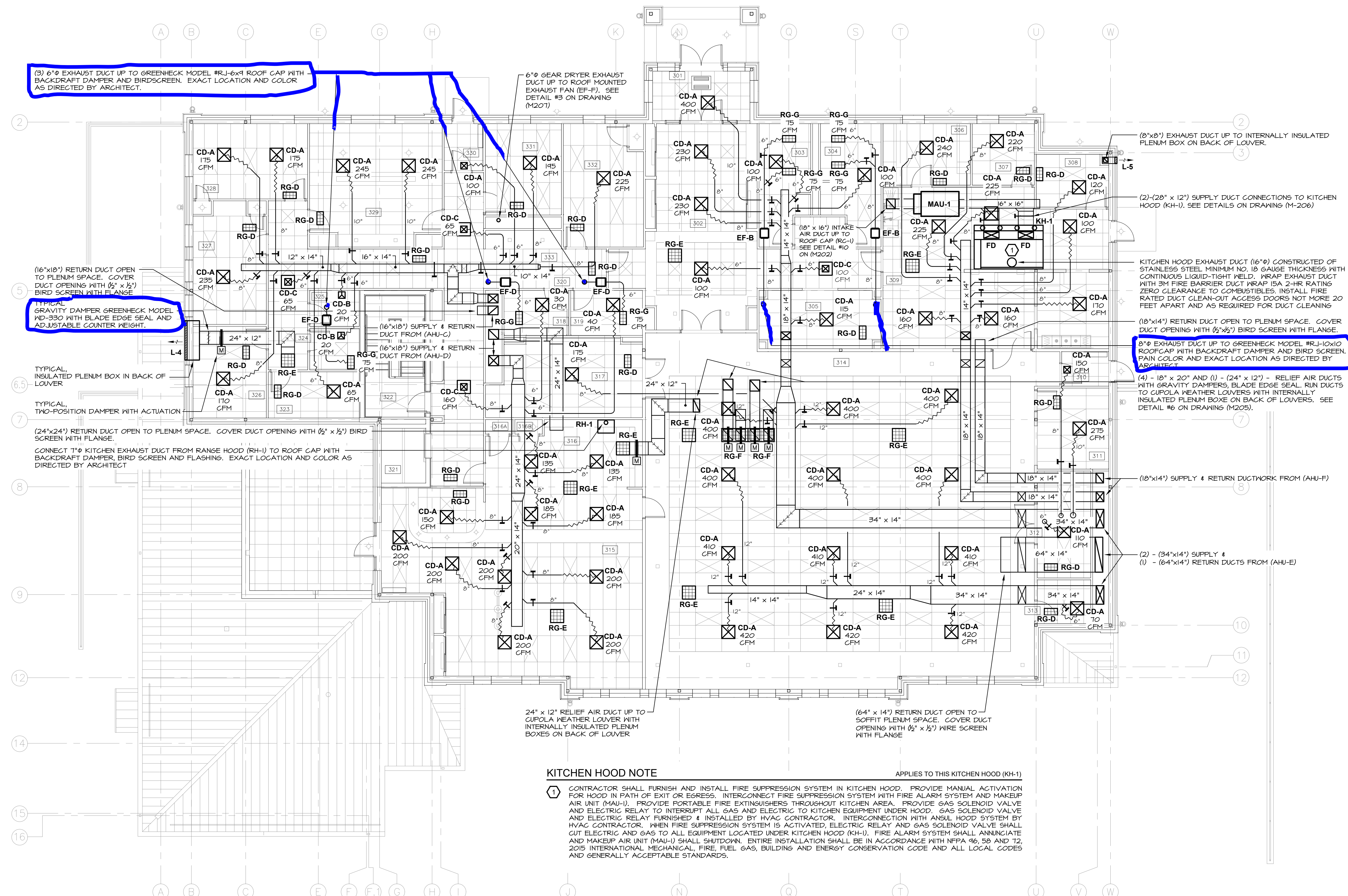
## REVISION HISTORY

	DATE	DESCRIPTION
①		
②		
③		
④		
⑤		
⑥		
⑦		
⑧		

MECHANICAL:  
3rd FLOOR  
REFLECTED CEILING PLAN

SCALE: AS NOTED  
DWG. BY: KC  
DWG. DATE: 8/14/2020  
STATUS: BID DRAWINGS

MI02



## SEISMIC EQUIPMENT, DUCTWORK AND PIPE HANGER DESIGN

THE HVAC SYSTEM SHALL COMPLY WITH THE NEW YORK STATE UNIFORM FIRE PROTECTION AND BUILDING CODE SECTION 613.1 AND APPLICABLE PROVISIONS OF 905.4.1 (ARCHITECTURAL, MECHANICAL AND ELECTRICAL COMPONENT SEISMIC DESIGN REQUIREMENTS).  
HVAC CONTRACTOR SHALL HIRE NYS LICENSED PROFESSIONAL ENGINEER TO DESIGN AND PREPARE SHOP DRAWINGS WITH CALCULATIONS FOR EACH EQUIPMENT SUPPORT, CONDUIT SUPPORT, MULTIPLE LINE SUPPORT, TRAFFIC AND SEISMIC RESTRAINT. SUBMIT SHOP DRAWINGS WITH CALCULATIONS TO ENGINEER FOR RECORD AND TO LOCAL AUTHORITY HAVE JURISDICTION FOR APPROVAL.

SEISMIC REQUIREMENTS:  
BUILDING USE CATEGORY - IV  
SEISMIC DESIGN CATEGORY - C

### 3rd FLOOR REFLECTED CEILING PLAN

SCALE:  $\frac{1}{8}'' = 1'-0''$



3rd FLOOR ROOM LEGEND			
NO.	NAME	NO.	NAME
301	VESTIBLE	316B	CLOSET
302	LOBBY	317	TABLE/CHAIR STORAGE
303	PUBLIC MEN'S LAVATORY	318	WOMEN'S LAVATORY
304	PUBLIC WOMEN'S LAVATORY	319	MEN'S LAVATORY
305	COAT ROOM	320	CORRIDOR
306	PANTRY	321	ELEVATOR
307	REFRIGERATED STORAGE	322	STAIR
308	DISH STORAGE	323	FIRE PREVENTION STOR
309	KITCHEN	324	JANITOR
309A	DISH WASHING	325	KEYS KEEPING
310	VESTIBLE	326	ASSISTANT CHIEF'S
311	SERVICE CENTER	327	JUNIOR OFFICERS
312	STORAGE	328	CHIEF'S OFFICE
313	AV	329	CONFERENCE ROOM
314	MEETING/TRAINING	330	VESTIBLE
315	MEMBERS ROOM	331	PRESIDENT/VP OFFICE
316	KITCHENETTE	332	BUSINESS OFFICE
316A	CLOSET	333	WORK AREA