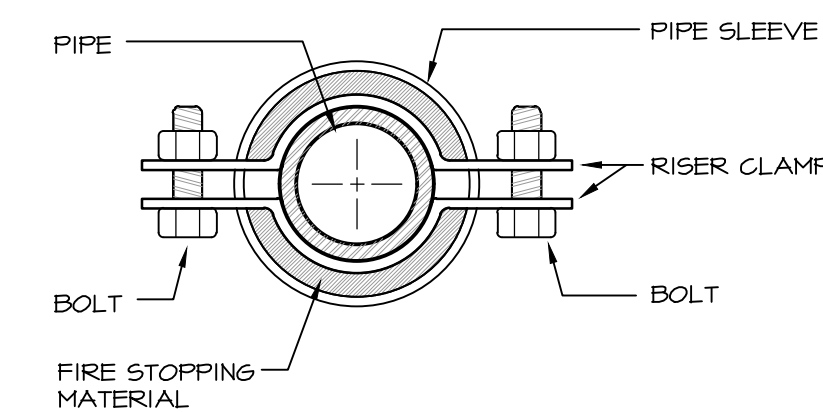
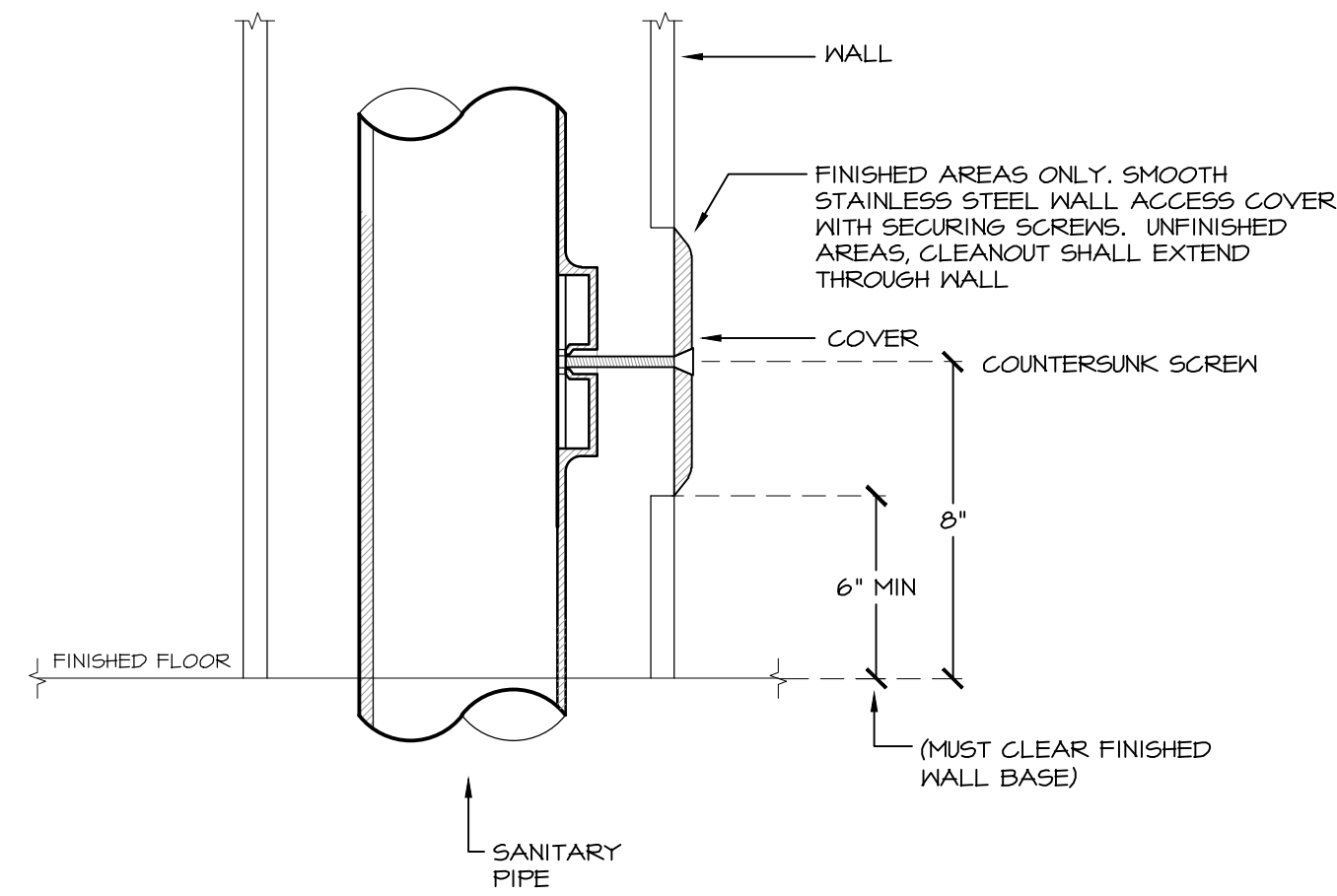


NOTE:
THIS DETAIL ALSO APPLICABLE TO INTERIOR NON-WATER PROOF FLOOR CONSTRUCTION. FOR WATER PROOF FLOOR CONSTRUCTION AND OTHER CONSTRUCTION - SEE SPECIFICATIONS.



1 FIRE RATED PARTITIONS & WALLS
P200 NOT TO SCALE

2 WALL CLEANOUT DETAIL
P200 NOT TO SCALE

3 SUPPORT ANCHOR PIPE RISERS
P200 NOT TO SCALE

MA
MITCHELL ASSOCIATES ARCHITECTS
29 THACHER PARK ROAD
VOORHEESVILLE, NY 12186
(518) 765-4511 FAX (518) 765-2150
WWW.MITCHELL-ARCHITECTS.COM

EMERGENCY SERVICE
FACILITIES

CONSULTANTS:
INSITE ENGINEERING SURVEYING & LANDSCAPE ARCHITECTURE, P.C.
3 GARRET PLACE
CARMEL, NY 10512
(845) 225-9640 FAX: (845) 225-4177

CRAIG A. MALONEY P.E.
STRUCTURAL ENGINEERING CONSULTANT
5 BENEDICT COURT
BALLSTON SPA, NY 12020
(518) 584-4844 FAX: (518) 584-4855

GERARD ASSOCIATES
CONSULTING ENGINEERS, P.C.
MECHANICAL, PLUMBING AND ELECTRICAL
223 MAIN STREET
GOSHEN, NY 10924
(845) 241-1212 (6A2011)

COPYRIGHT 2012
MITCHELL ASSOCIATES ARCHITECTS
UNAUTHORIZED ALTERATION OR ADDITION
TO THIS DOCUMENT IS A VIOLATION OF LAW

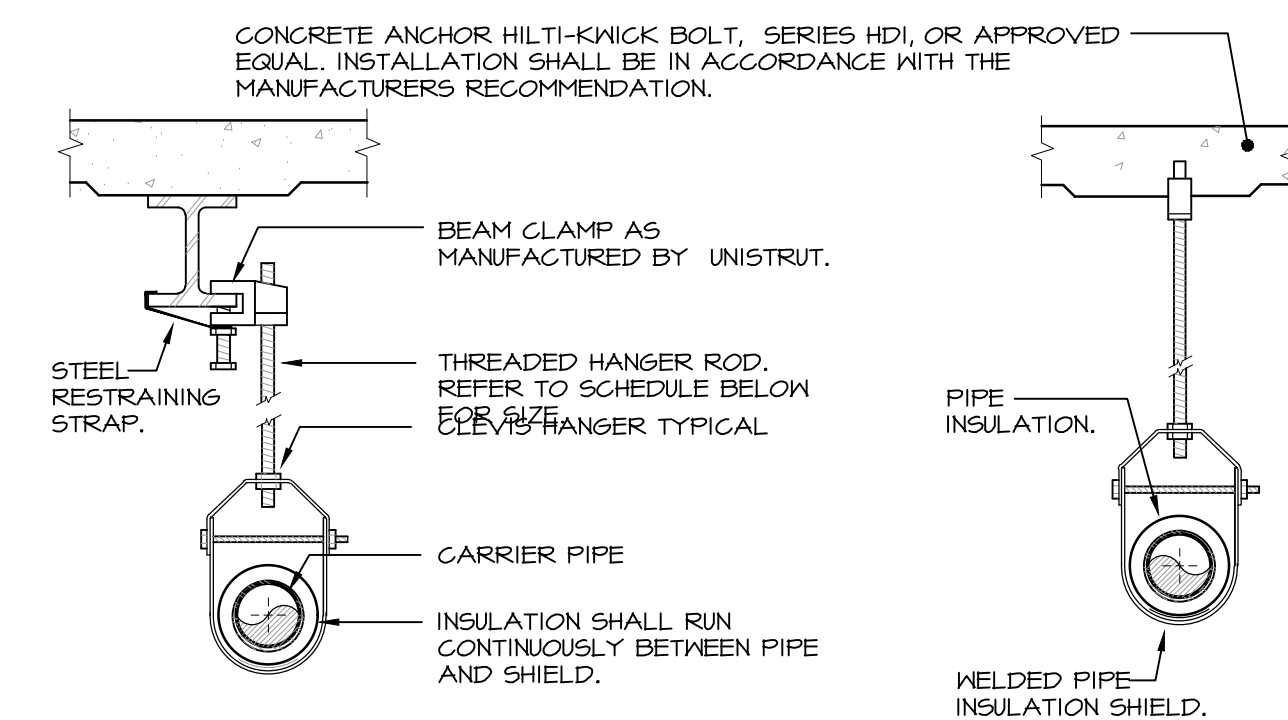
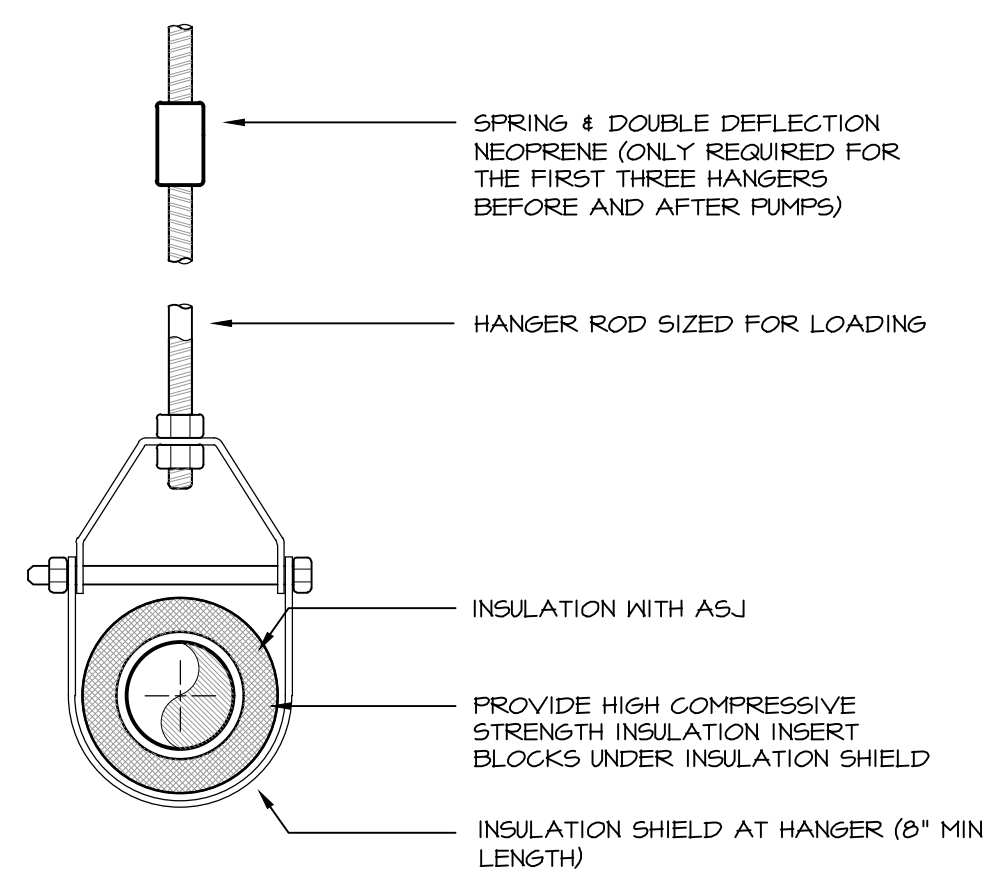
NEW STATION FOR PUTNAM VALLEY FIRE STATION #1

OSCAWANA LAKE ROAD
PUTNAM VALLEY, NEW YORK

REVISION HISTORY	
DATE	DESCRIPTION

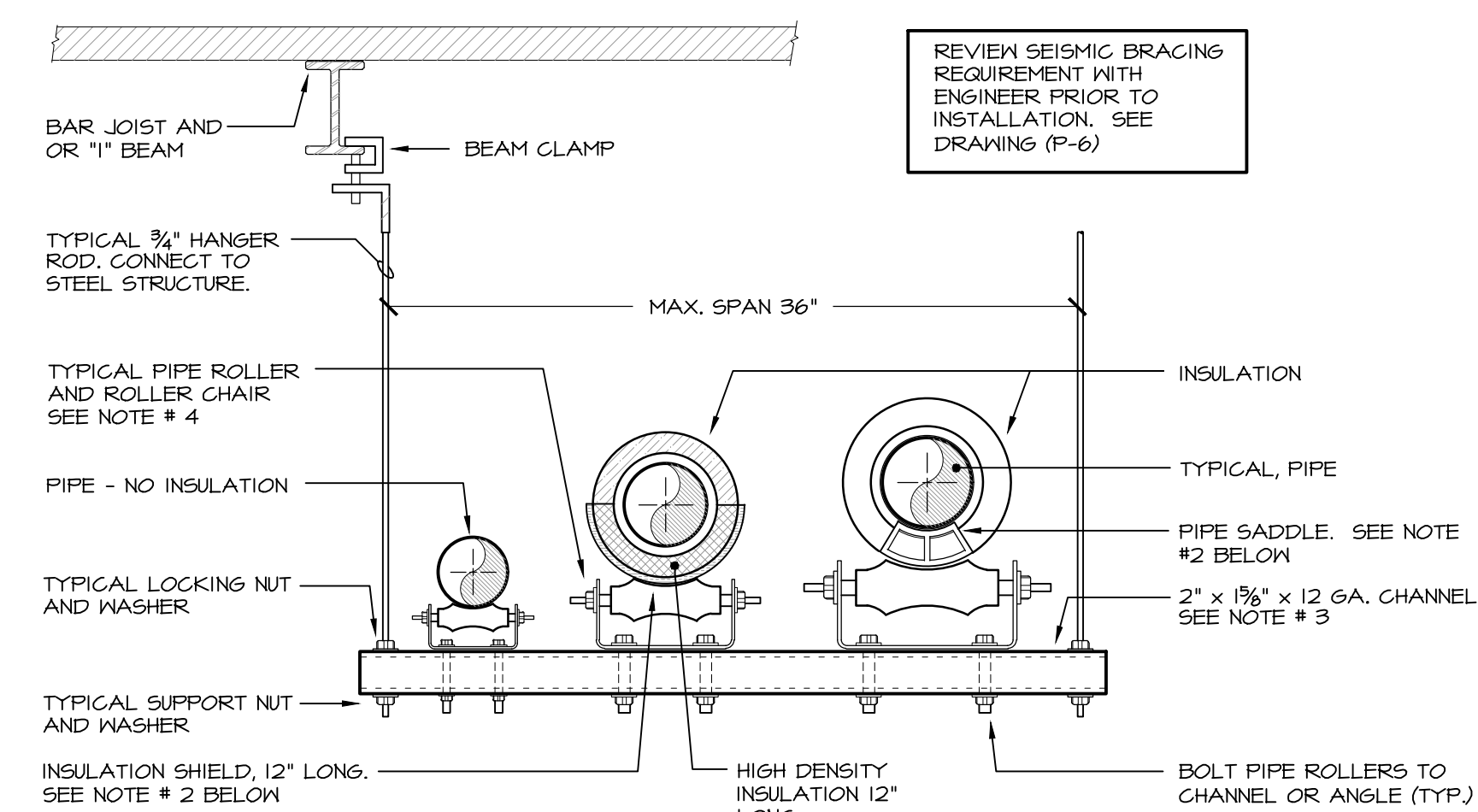
PLUMBING: DETAILS
SCALE: AS NOTED
DWS. BY: KC
DWS. DATE: 8/14/2020
STATUS: BID DRAWINGS

P200



PIPE HANGER SCHEDULE				
PIPE DIA.	3/4"-2"	2 1/2"-3"	4"-5"	6" 8"-12"
HANGER DIA.	3/8"	1/2"	5/8"	3/4" 1/8"

- NOTES:
1. CLEVIS HANGERS WITH WELDED INSULATION SHIELDS SIMILAR TO RAUGH FIG. 100SH ON ALL PIPES LARGER THAN 1"
 2. FOR PIPES 1" OR SMALLER, A BAND HANGER WITH INSULATION SHIELD MAY BE USED SIMILAR TO RAUGH FIG. NO. 1ASH.
 3. FOR NON-INSULATED PIPE, INSULATION SHIELDS MAY BE OMITTED.
 4. ALL PIPE HANGERS SHALL BE GALVANIZED STEEL OR FACTORY PAINTED BLACK WITH ENAMEL.
 5. FOR NON FERROUS PIPING WITHOUT INSULATION, ALL HANGERS SHALL BE COPPER PLATED OR FURNISHED WITH A DI-ELECTRIC BETWEEN PIPE AND HANGERS.
 6. WHERE EXISTING BUILDING STRUCTURAL COMPONENTS HAVE FIREPROOF MATERIAL, ANY AREA THAT IS DISTURBED OR DAMAGED AS A RESULT OF HANGER INSTALLATION SHALL BE PATCHED WITH UL AND FM APPROVED FIREPROOFING TO MATCH EXISTING.

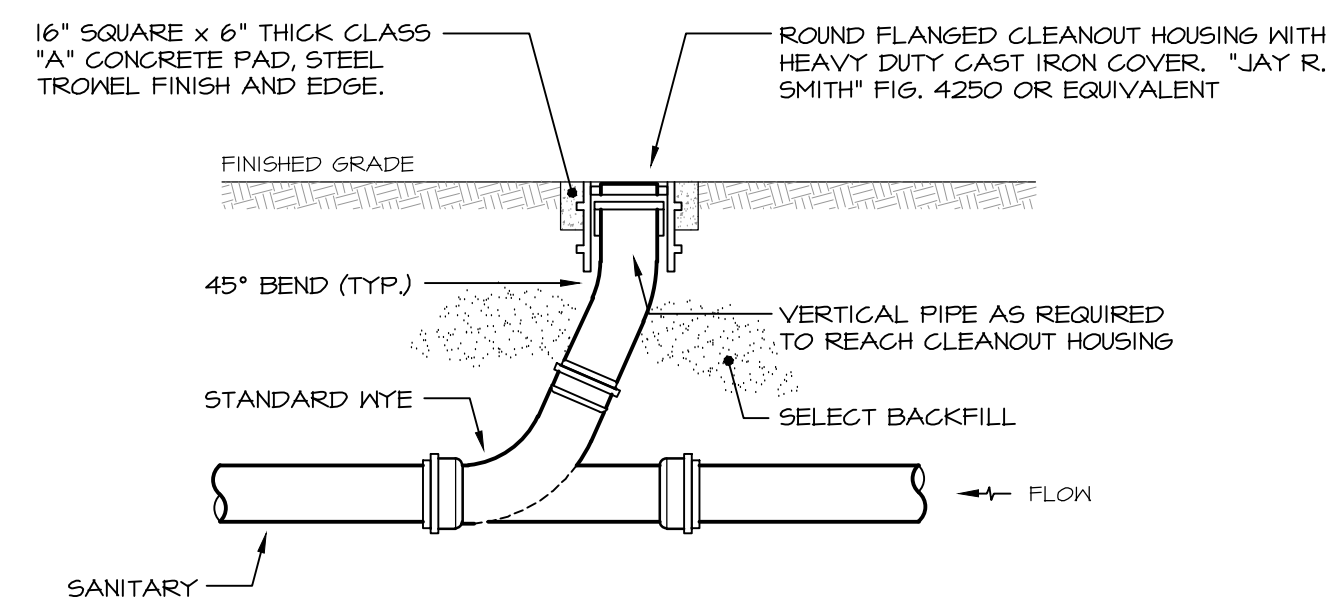


- NOTES:
1. ATTACH HANGERS TO THE STEEL STRUCTURE ABOVE.
 2. PROVIDE INSULATION SHIELD OR PIPE SADDLE BASED ON THE PIPING SYSTEM AND PIPE SIZE AS INDICATED IN THE SPECIFICATIONS.
 3. TRAPEZE TYPE HANGER SHALL BE USED FOR A MAXIMUM 1000 LB UNIFORM LOAD.
 4. ELIMINATE PIPE ROLLERS AND ROLLER CHAIRS AT ANCHOR POINTS

4 PIPE HANGER DETAIL
P200 NOT TO SCALE

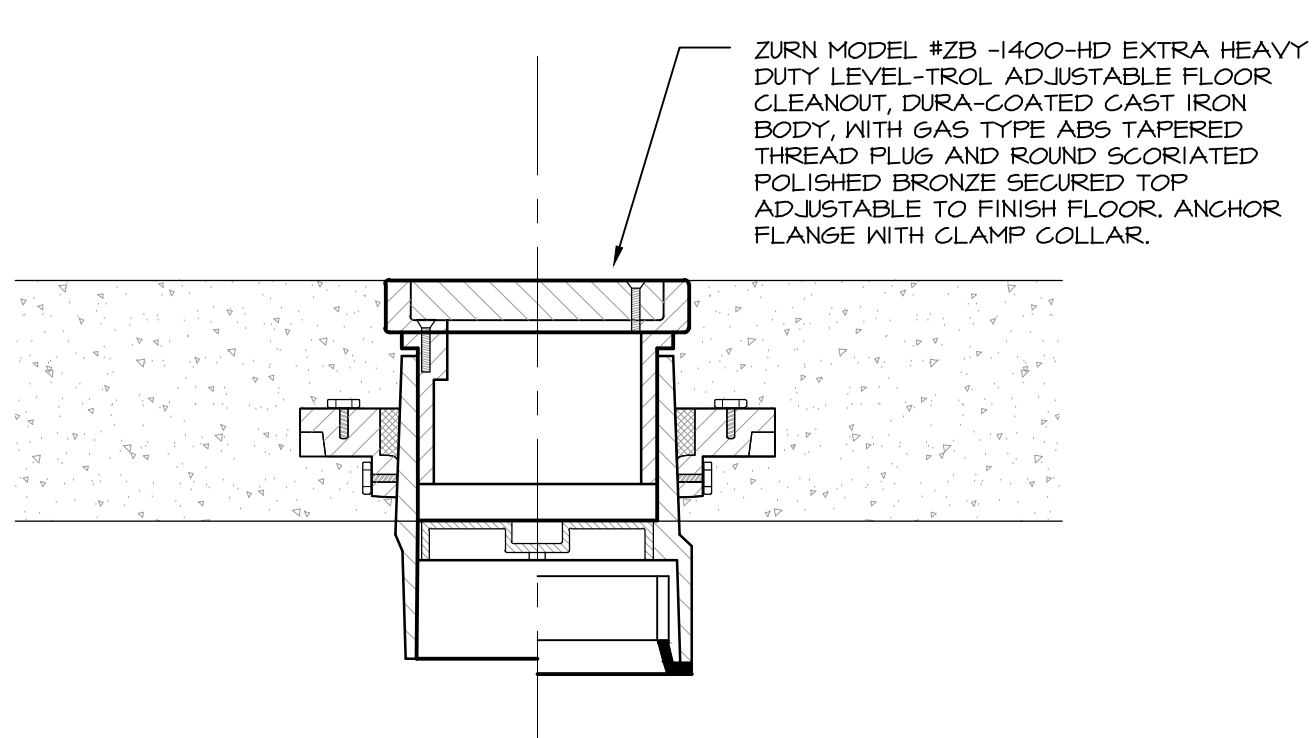
5 PIPE HANGER DETAIL
P200 NOT TO SCALE

6 TRAPEZE TYPE HANGER INSTALLATION DETAIL
P200 NOT TO SCALE

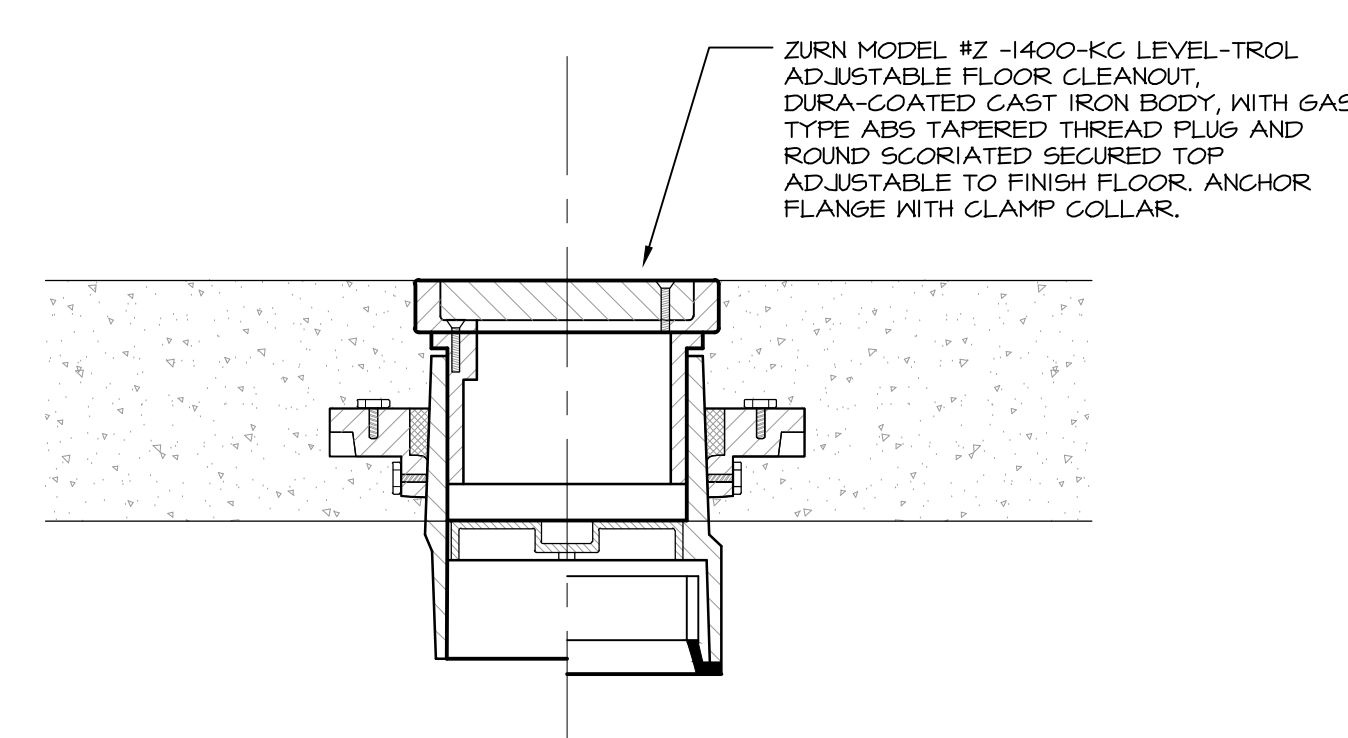


- NOTES:
1. SANITARY SEWER PIPING AND FITTINGS SHALL BE OF THE MATERIAL INDICATED ON THE PLANS.
 2. CLEANOUT LOCATION SHALL BE AS SHOWN ON PLANS.

7 EXTERIOR CLEANOUT (EX.C.O.) DETAIL
P200 NOT TO SCALE



8 INTERIOR FLOOR CLEANOUT (F.C.O.-I) VEHICLE/TRUCK TRAFFIC DETAIL
P200 NOT TO SCALE



9 INTERIOR FLOOR CLEANOUT (F.C.O.) PEDESTRIAN TRAFFIC DETAIL
P200 NOT TO SCALE