

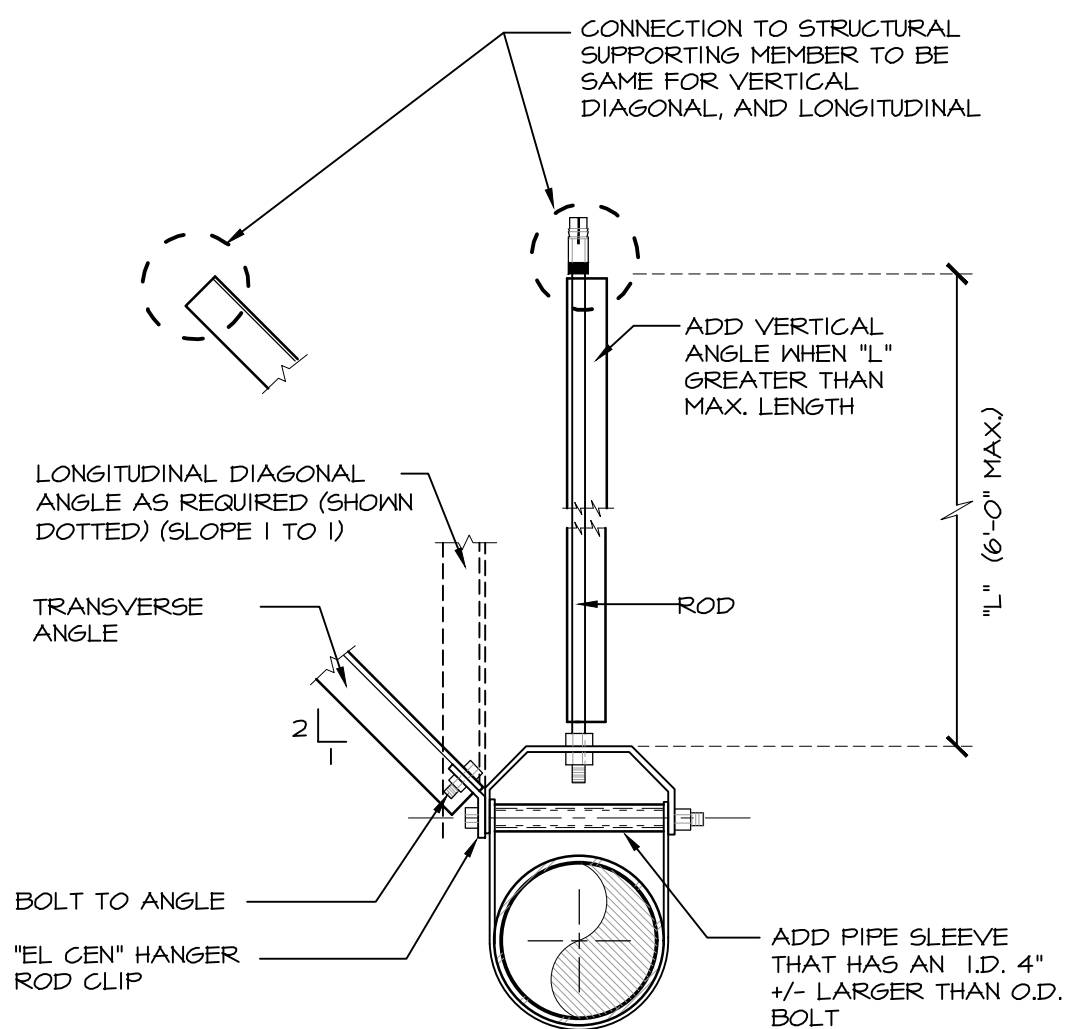
BRACE SPACING	PIPE	ROD	MAX. ROD LENGTH	VERT. HANGERS	TRANSVERSE HANGERS	BOLT
80'	2 1/2"	1/2"	25"	2 x 2 x 16ga	2 1/2" x 2 1/2 x 16ga	3/8"
80'	3"	1/2"	25"	2 x 2 x 16ga	2 1/2" x 2 1/2 x 16ga	3/8"
80'	4"	3/4"	31"	2 x 2 x 16ga	2 1/2" x 2 1/2 x 16ga	3/8"
80'	6"	3/4"	37"	2 x 2 x 16ga	2 1/2" x 2 1/2 x 16ga	3/8"
80'	8"	1"	43"	2 x 2 x 16ga	2 1/2" x 2 1/2 x 16ga	3/8"

1

LONGITUDINAL SEISMIC BRACING

5PK202

NOT TO SCALE



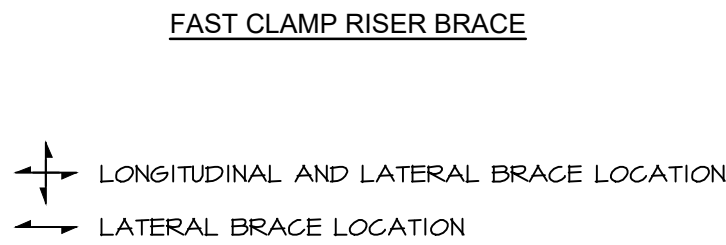
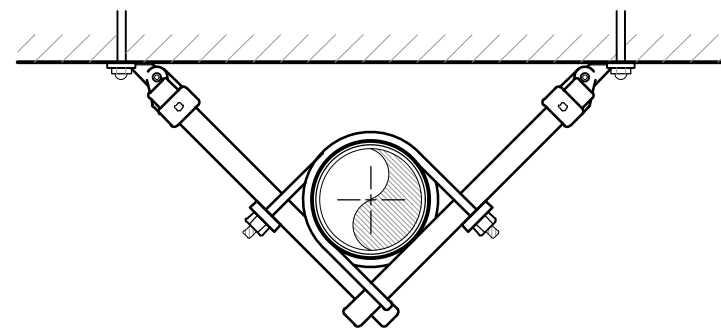
BRACE SPACING	PIPE	ROD	MAX. ROD LENGTH	VERT. HANGERS	TRANSVERSE HANGERS	BOLT
40'	2 1/2"	1/2"	25"	2 x 2 x 16ga	2 1/2" x 2 1/2 x 16ga	3/8"
40'	3"	1/2"	25"	2 x 2 x 16ga	2 1/2" x 2 1/2 x 16ga	3/8"
40'	4"	3/4"	31"	2 x 2 x 16ga	2 1/2" x 2 1/2 x 16ga	3/8"
40'	6"	3/4"	37"	2 x 2 x 16ga	2 1/2" x 2 1/2 x 16ga	3/8"
40'	8"	1"	43"	2 x 2 x 16ga	2 1/2" x 2 1/2 x 16ga	3/8"

3

TRANSVERSE SEISMIC PIPE BRACING

5PK202

NOT TO SCALE

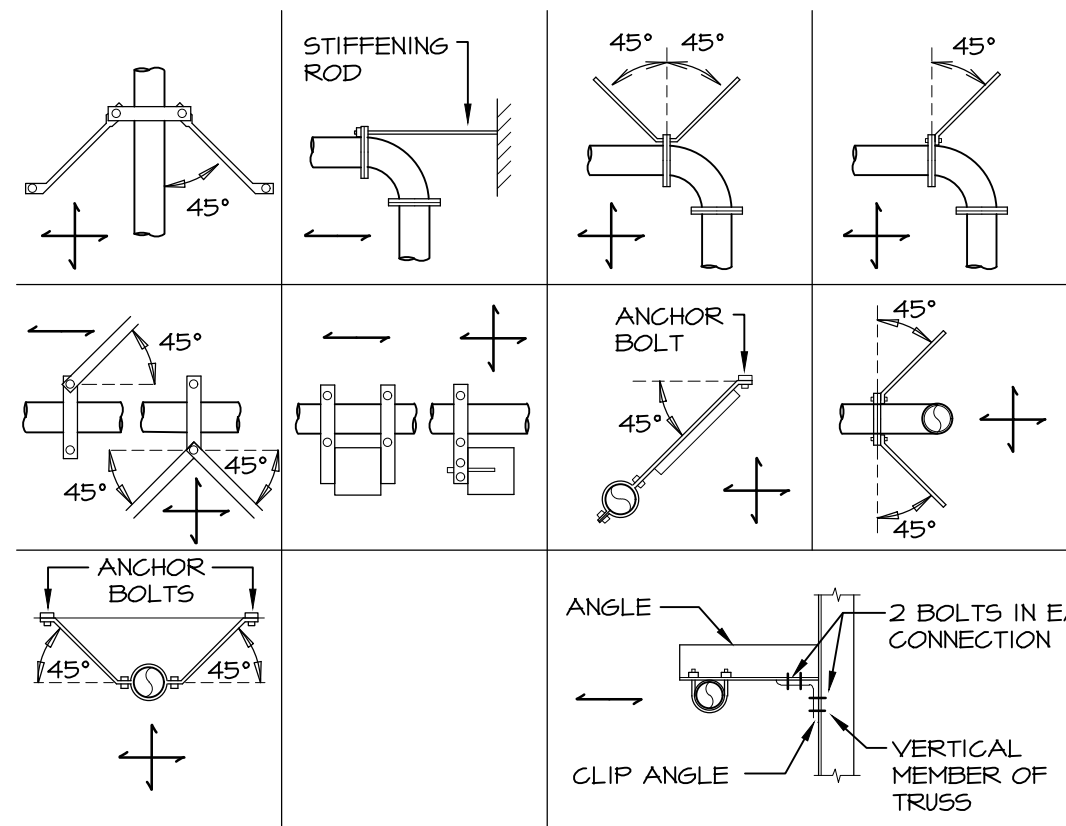


2

SEISMIC HANGER DETAILS

5PK202

NOT TO SCALE

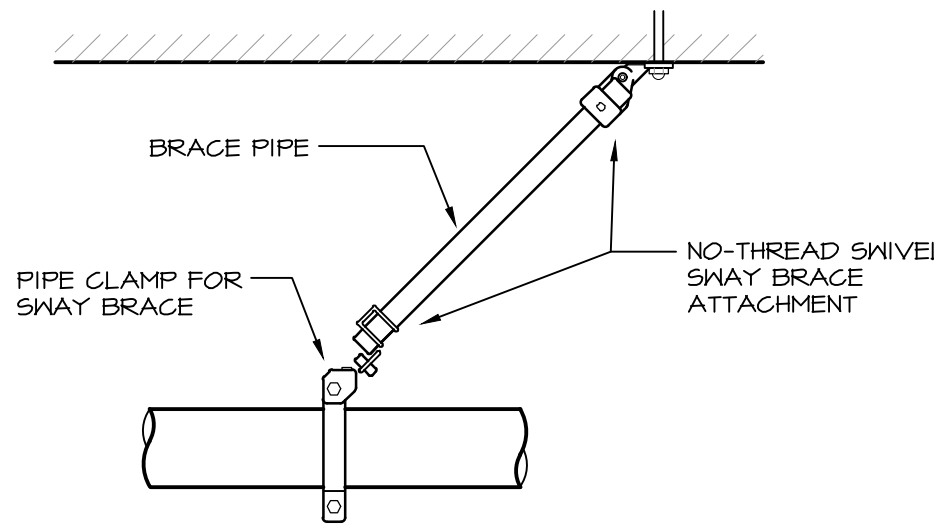


4

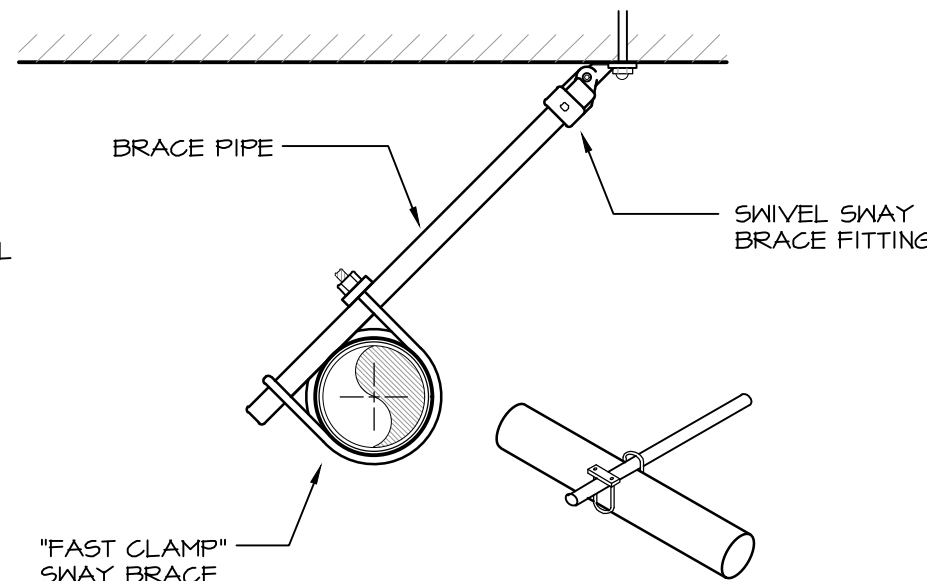
SEISMIC SWAY BRACING (GENERAL)

5PK202

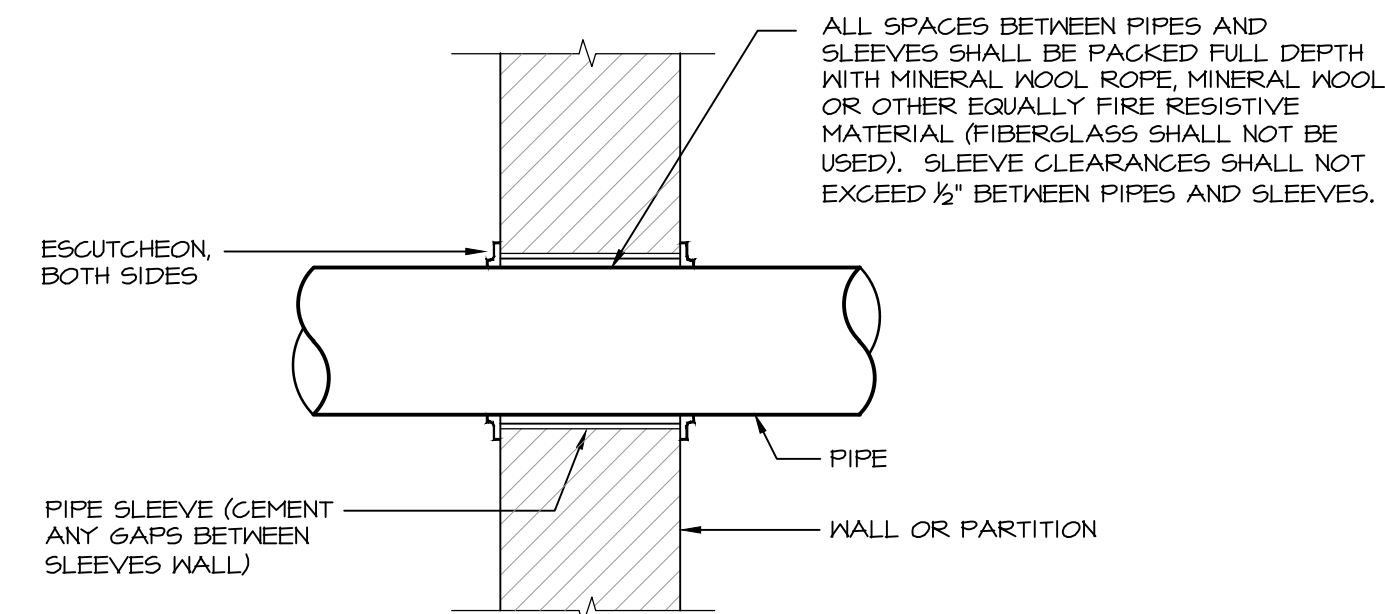
NOT TO SCALE



LONGITUDINAL EARTHQUAKE BRACE
NON-THREADED BRACE PIPE



LATERAL EARTHQUAKE BRACE
NON-THREADED BRACE PIPE



NOTE:
THIS DETAIL ALSO APPLICABLE TO INTERIOR NON-WATER PROOF FLOOR CONSTRUCTION. FOR WATER PROOF FLOOR CONSTRUCTION AND OTHER CONSTRUCTION - SEE SPECIFICATIONS.

5

FIRE RATED PARTITION AND WALL PENETRATION DETAIL

5PK202

NOT TO SCALE

SEISMIC EQUIPMENT AND PIPE HANGER DESIGN

THE FIRE PROTECTION SYSTEM SHALL COMPLY WITH THE NEW YORK STATE UNIFORM FIRE PROTECTION AND BUILDING CODE SECTION 1613 AND APPLICABLE PROVISIONS OF ASCE 7 (ARCHITECTURAL, MECHANICAL AND ELECTRICAL COMPONENT SEISMIC DESIGN REQUIREMENTS).
SPRINKLER CONTRACTOR SHALL HIRE NYS LICENSED PROFESSIONAL ENGINEER TO DESIGN AND PREPARE SHOP DRAWINGS WITH CALCULATIONS FOR EACH PIPE SUPPORT, CONDUIT SUPPORT, MULTIPLE PIPE SUPPORT, TRAPEZE AND SEISMIC RESTRAINT. SUBMIT SHOP DRAWINGS WITH CALCULATIONS TO ENGINEER FOR RECORD AND TO LOCAL AUTHORITY HAVING JURISDICTION FOR APPROVAL.

SEISMIC REQUIREMENTS:
IMPORTANCE FACTOR - 1.5
BUILDING USE CATEGORY - IV
SEISMIC DESIGN CATEGORY - C

MA

MITCHELL ASSOCIATES ARCHITECTS

29 THACHER PARK ROAD
VOORHEESVILLE, NY 12186
(518) 765-4511 FAX (518) 765-2450
WWW.MITCHELL-ARCHITECTS.COM

EMERGENCY SERVICE

FACILITIES

CONSULTANTS:
INSITE ENGINEERING SURVEYING
& LANDSCAPE ARCHITECTURE, P.C.
3 GARRET PLACE
CARMEL, NY 10512
(845) 225-9640 FAX:(845) 225-9717

CRAIG A. MALONEY P.E.
STRUCTURAL ENGINEERING CONSULTANT
3 BENEDICT COURT
BALLSTON SPA, NY 12020
(518) 584-9844 FAX:(518) 584-9855

GERARD ASSOCIATES
CONSULTING ENGINEERS, P.C.
MECHANICAL, PLUMBING
AND ELECTRICAL
223 MAIN STREET
GOSHEN, NY 10924
(845) 241-1212
GARD011

COPYRIGHT 2012
MITCHELL ASSOCIATES ARCHITECTS
UNAUTHORIZED ALTERATION OR ADDITION
TO THIS DOCUMENT IS A VIOLATION OF LAW

NEW STATION FOR PUTNAM VALLEY FIRE STATION #1

OSCAWANA LAKE ROAD
PUTNAM VALLEY, NEW YORK

REVISION HISTORY		
DATE	DESCRIPTION	
△		
△		
△		
△		
△		
△		
△		

SPRINKLER: DETAILS

SCALE: AS NOTED
DWS, BY: KC
DWS, DATE: 8/14/2020
STATUS: BID DRAWINGS

SPK203