

PHOTO 1

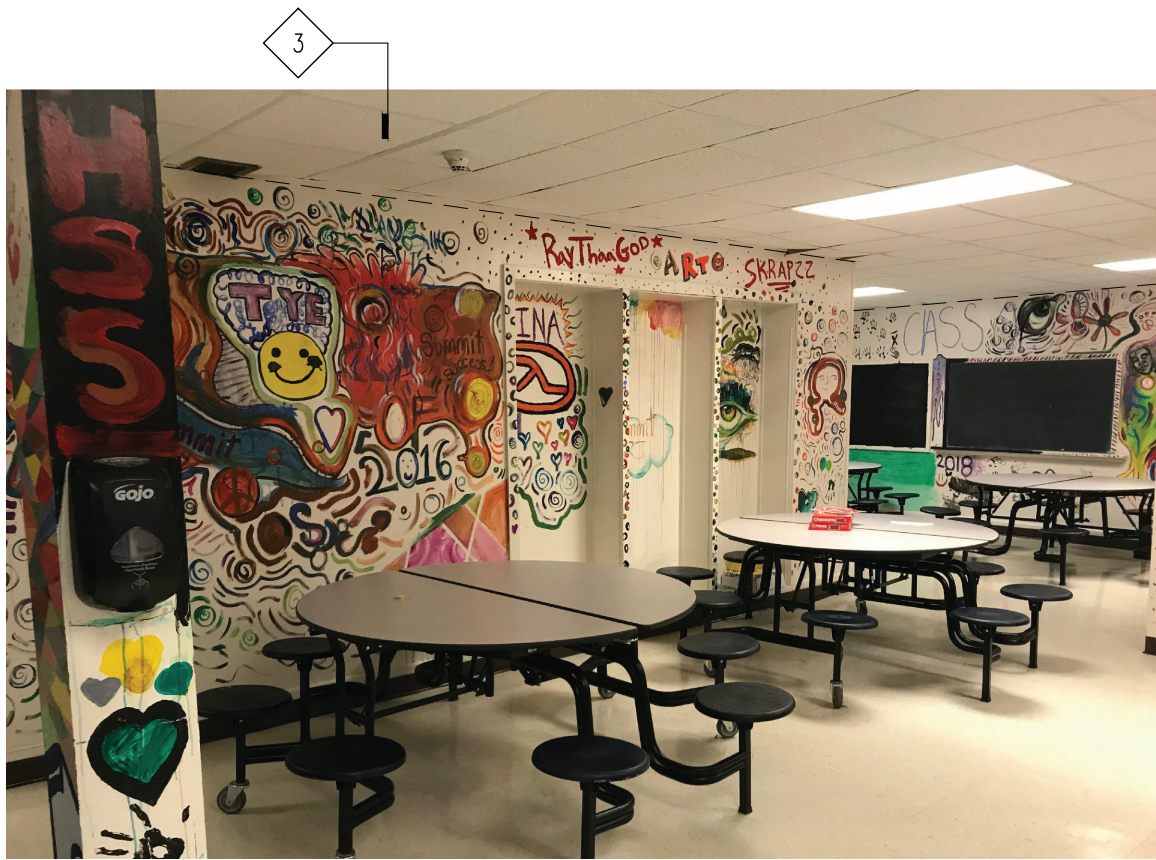


PHOTO 2



PHOTO 3

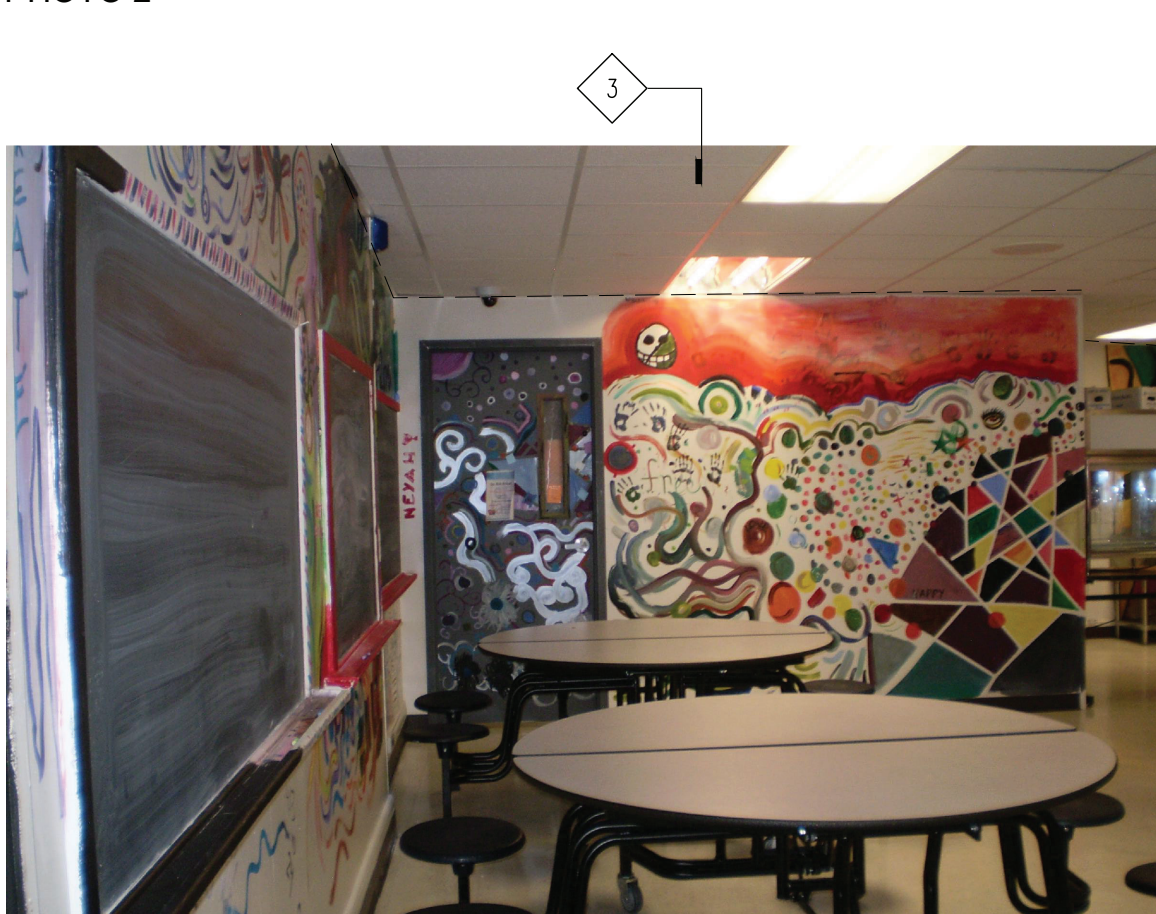
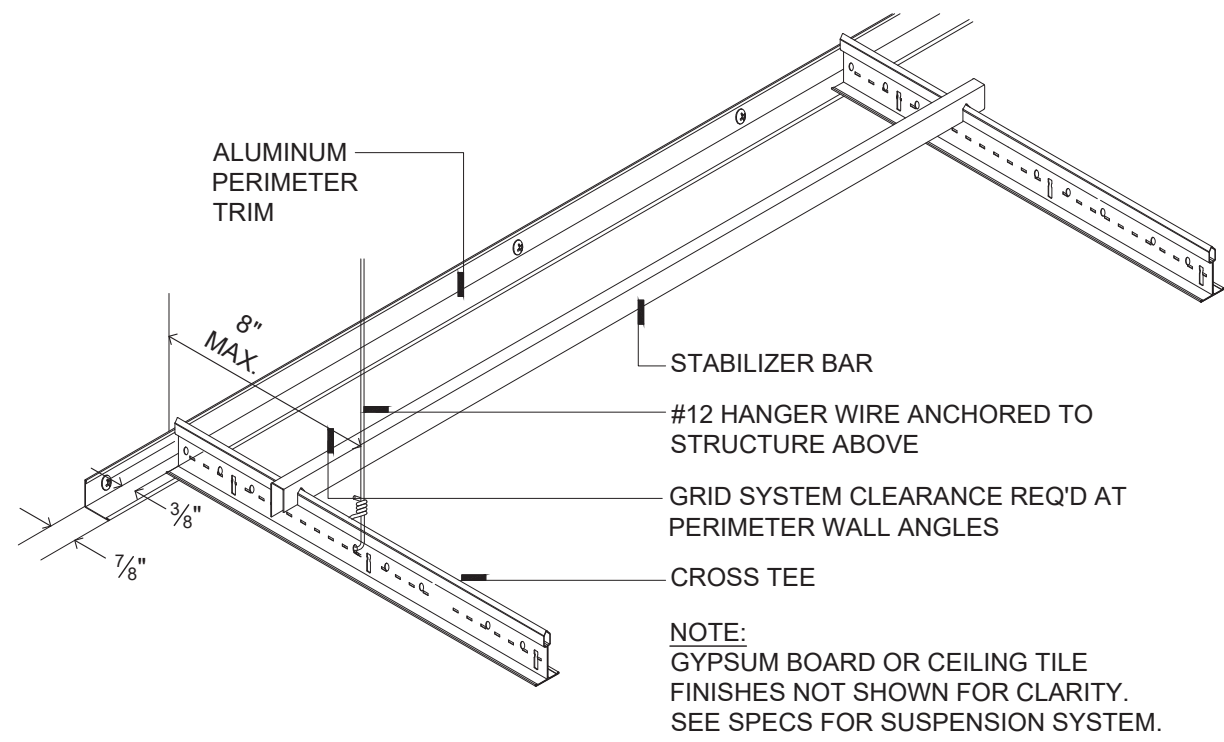


PHOTO 4

3 Uriah Hill School - Reference Photos

U-A.100 SCALE: NTS



ISOMETRIC VIEW

2 Uriah Hill School - Suspended Ceiling Detail

U-A.100 SCALE: NTS

LEGEND

- EXISTING WALL CONST. TO REMAIN
- EXISTING DOOR AND FRAME TO REMAIN
- AREA OF WORK (SEE ELECTRICAL, MECHANICAL, AND PLUMBING FOR ADDITIONAL DETAILS)
- REFERENCE PHOTO

GENERAL REMOVAL NOTES

- ALL WALL, FLOORING, & CLG. SURFACES TO REMAIN WHICH ARE DAMAGED DURING REMOVALS SHALL BE REPAIRED TO MATCH SURROUNDING MATERIALS & PREPARED READY FOR APPLICATION OF REQ'D FINISHES. PROVIDE MATERIALS TO MATCH EXIST. MATERIALS & SURFACES "IN-KIND". THIS INCLUDES BUT NOT LIMITED TO REPLACEMENT OF FINISH MATLS, DRYWALL CONST., MASONRY, & MASONRY REPAIRS, TAPING, SANDING, & PAINTING ETC.
- DIMENSIONED REMOVALS ARE FOR GENERAL INFORMATIONAL PURPOSES ONLY. COORDINATE EXACT EXTENT OF ALL REMOVALS AND MODIFICATIONS W/ CONST.
- WHERE REMOVALS OF MASONRY OCCURS, TOOTH IN MASONRY TO MATCH EXIST. COURSING & CONST. MATCH EXIST. MASONRY MATLS. USE SALVAGED MASONRY FOR PATCHING & REPAIR.
- AT ALL MASONRY OPENINGS OF REMOVALS PROVIDE TEMPORARY SHORINGS TO MAINTAIN STRUCTURAL INTEGRITY OF EXISTING CONST.
- SEE MECHANICAL, ELECTRICAL, AND PLUMBING FOR ADDITIONAL REMOVALS.
- CONTRACTOR SHALL PROVIDE PROTECTION OVER EXISTING FLOORING SYSTEMS AT ALL TIMES UNLESS FLOORING IS SCHEDULED FOR REMOVAL.
- HAZARDOUS MATERIAL SHALL BE REMEDIATED BY CERTIFIED HAZARDOUS MATERIAL CONTRACTOR. COORDINATE ALL WORK WITH HAZARDOUS MATERIAL DOCUMENTS.

KEYED REMOVAL NOTES

- REMOVE EXISTING VINYL TILE FINISH FLOORING & CONCEALED FLOORING MATERIALS COMPLETE, INCLUDING BUT NOT LIMITED TO ADHESIVES, AS REQUIRED FOR INSTALLATION OF NEW UNIT VENT.
- REMOVE WALL CONST. AS REQUIRED FOR INSTALLATION OF NEW UNIT VENT AND LOUVER. SEE MECHANICAL DRAWINGS.
- REMOVE EXISTING CEILING SYSTEM COMPLETE, INCLUDING SUSPENSION WIRES, ANCHORS, CLIPS, FASTENERS, CHANNELS, ETC. (V.I.F.) SALVAGE EXISTING CEILING TILES, LIGHT FIXTURES, SMOKE DETECTORS, SECURITY CAMERAS, AND SPEAKERS.
- REMOVE AND SALVAGE EXISTING WINDOW SASH AS REQUIRED FOR INSTALLATION OF NEW UNIT VENT. SEE MECHANICAL DRAWINGS.
- REMOVE AIR CONDITIONER WINDOW UNIT AND PANEL. RETURN TO OWNER

GENERAL PLAN NOTES

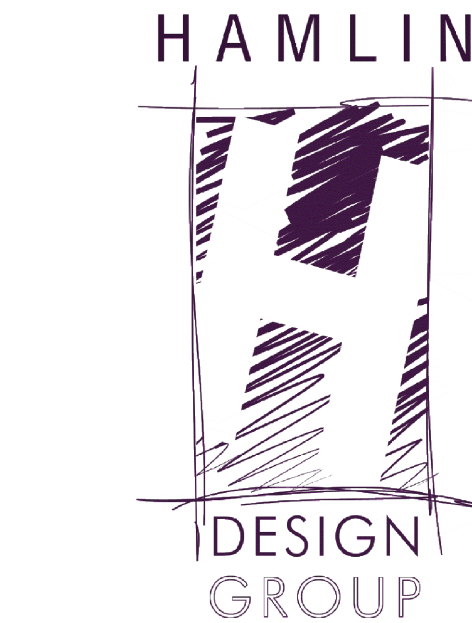
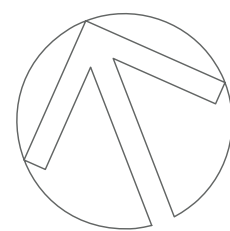
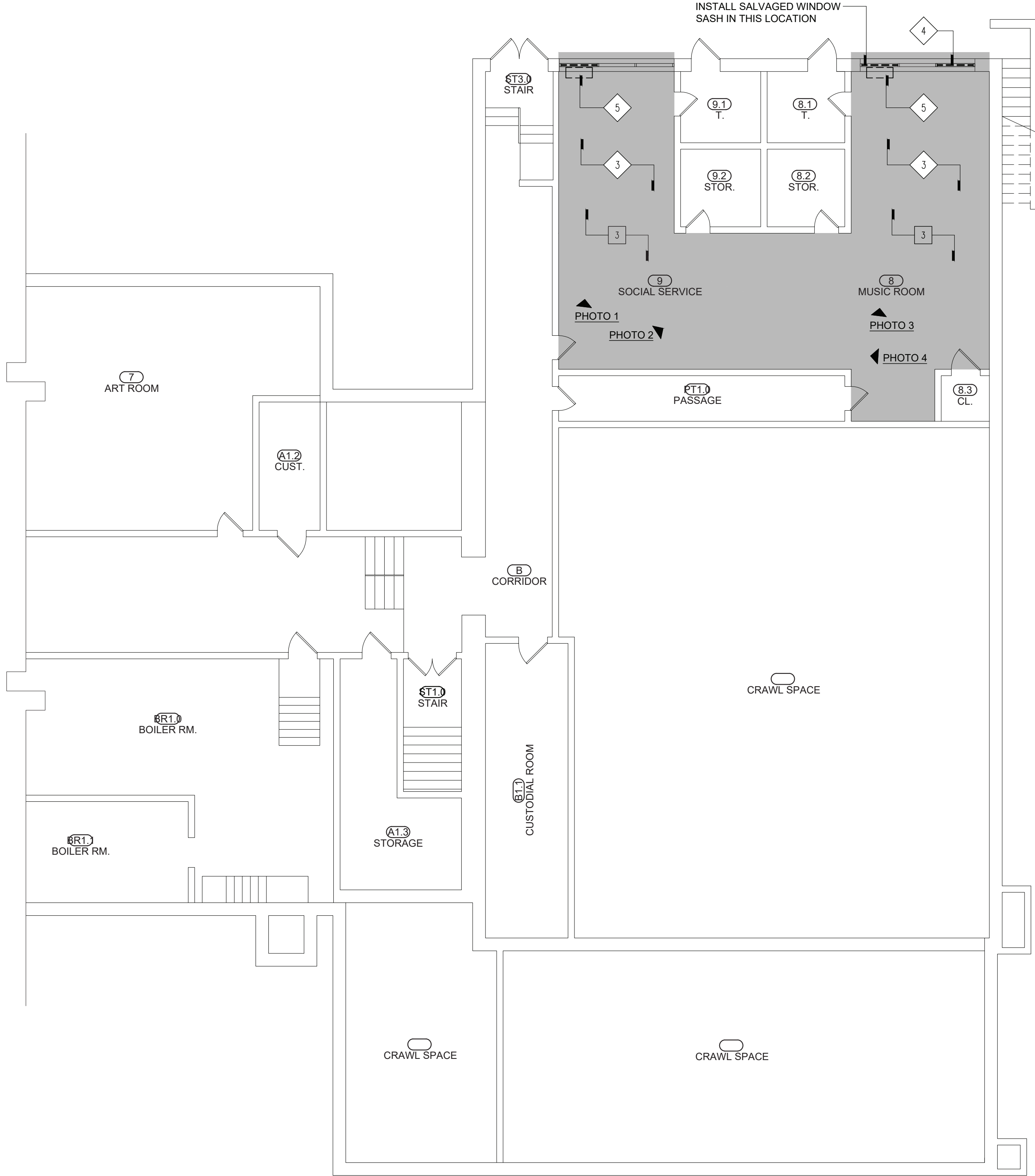
- ALL DIMENSIONS ARE TO FINISH FACE AT EXISTING CONST. AND UNIT MASONRY CONSTRUCTION AND TO FACE OF FRAMING AT DRYWALL CONSTRUCTION UNLESS OTHERWISE NOTED.
- ± NOTATIONS ARE USED IN DIMENSION STRINGS TO ACCOUNT FOR VARIATIONS BETWEEN DRAWINGS AND FIELD CONDITIONS. CONTRACTOR SHALL VERIFY ALL ± DIMENSION DURING LAYOUT AND INFORM ARCHITECT OF ANY DISCREPANCIES OR NECESSARY MODIFICATIONS PRIOR TO PROCEEDING WITH CONSTRUCTION.
- CLEAN PATCH & REPAIR EXISTING WALLS AS REQ'D TO RESTORE TO LIKE NEW CONDITION. FINISH SURFACES TO BE SMOOTH AND FLUSH WITH ADJACENT SURFACES AND READY TO RECEIVE PAINT.

KEYED PLAN NOTES

- INSTALL NEW FLOORING TO MATCH EXIST WHERE DAMAGED DURING REMOVAL / INSTALLATION.
- PATCH & REPAIR EXTERIOR WALL CONST. AS REQUIRED FOR NEW UNIT VENT INSTALLATION.
- INSTALL NEW 2'X2' SUSPENDED ACOUSTICAL CEILING SYSTEM IN EXISTING LOCATION USING SALVAGED CEILING TILES.
- PAINT ENTIRE WALL BELOW WINDOW UNITS TO MATCH EXISTING ROOM COLOR AND FINISH.

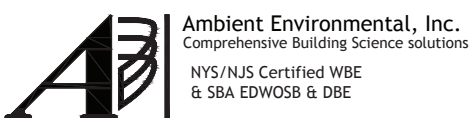
1 Uriah Hill School - Basement Floor Plan

U-A.100 SCALE: 1/8" = 1'-0"

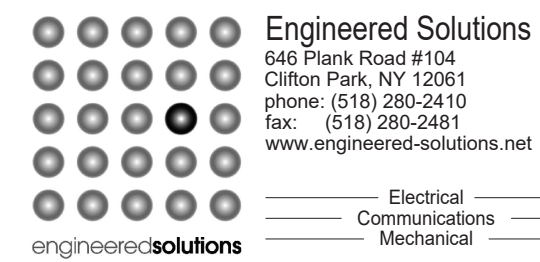


Architect:
Hamlin Design Group
915 Broadway, Suite 101A
Albany, New York 12207
Tel: 518.724.5159
Fax: 518.320.8633
Web: hamlindesigngroup.com

Hazardous Material Consultant:



MEP Engineer:



Client:



Peekskill City School District
1031 Elm St.
Peekskill, NY 10566

Peekskill Reconstruction

SED Project: 66-15-00-01-0-005-020
HDG Project: 201

Oakside Elementary
200 Decatur Ave.,
Peekskill, NY 10566

SED Project: 66-15-00-01-0-007-014
HDG Project: 202

Uriah Hill School
980 Pemart Ave.,
Peekskill, NY 10566

SED Project: 66-15-00-01-0-008-017
HDG Project: 203

Woodside Elementary
612 Depew St.,
Peekskill, NY 10566

SED Project: 66-15-00-01-0-014-005
HDG Project: 204

Middle School
212 Ringgold St.,
Peekskill, NY 10566

DRAWN BY:
TG

ISSUE: 02/01/2021
REV:



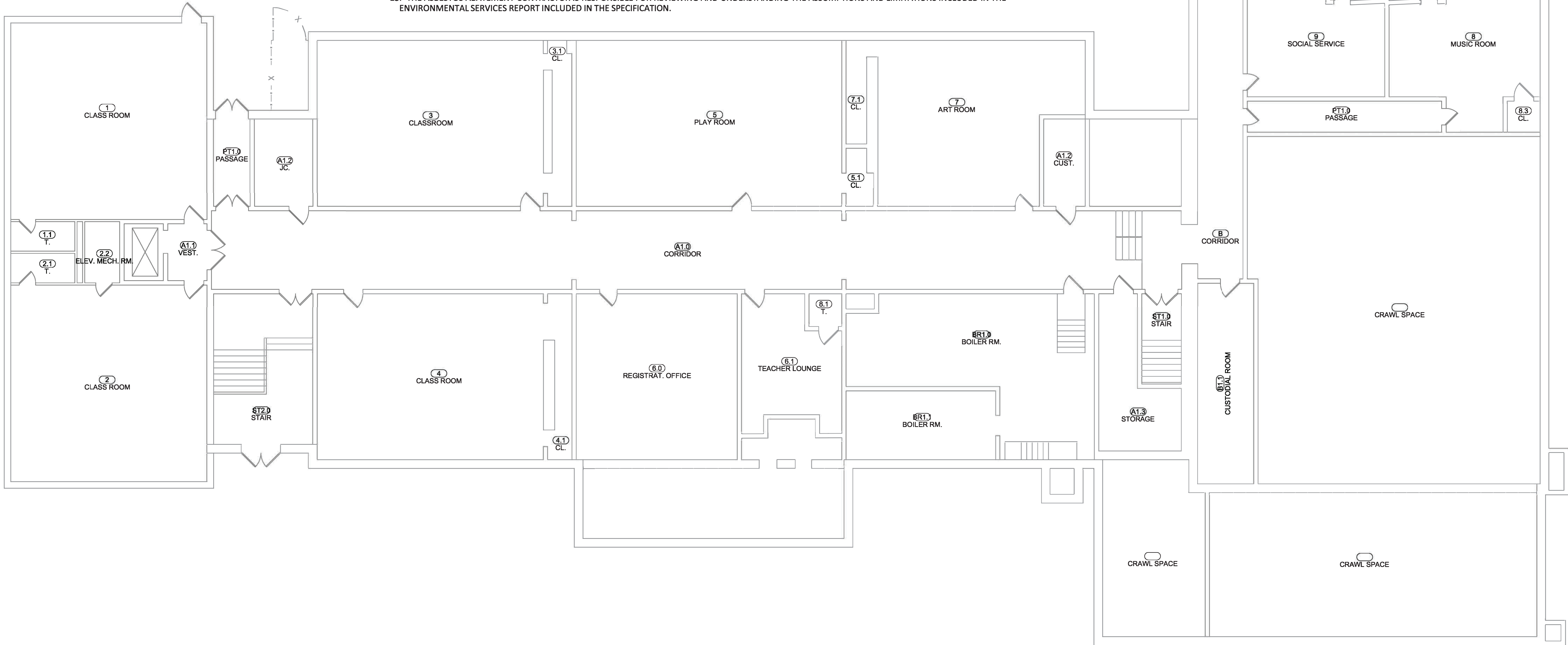
DESCRIPTION
Basement Floor Plan and Details

U-A.100.00

(ALTERNATE NO. 1)

GENERAL REMOVAL NOTES

1. THE CONTRACTOR SHALL BE SOLELY RESPONSIBLE FOR ALL MEANS, METHODS, TECHNIQUES, SEQUENCES AND PROCEDURES, AND FOR COORDINATING THE COMPLETION OF ALL PORTIONS OF THE SCOPE OF WORK WITHIN THE SPECIFIED CONSTRUCTION SCHEDULE AND AS DEFINED IN THE CONTRACT DOCUMENTS.
2. ALL ASBESTOS ABATEMENT SHALL BE PERFORMED IN ACCORDANCE WITH ALL FEDERAL, STATE, LOCAL REGULATIONS, AND THE TERMS OF THE CONTRACT. ALL ABATEMENT ACTIVITY WITHIN THE BUILDING SHALL BE PERFORMED INSIDE A CONTAINED WORK AREA THAT MEETS THE REQUIREMENTS OF OSHA 1926.1101, THE ASBESTOS HAZARD EMERGENCY RESPONSE ACT AND NEW YORK STATE DEPARTMENT OF LABOR CODE RULE 56.
3. ALL ABATEMENT ACTIVITY ON THE EXTERIOR OF THE BUILDING SHALL BE PERFORMED WITHIN THE REQUIREMENTS OF OSHA 1926.1101, THE ASBESTOS HAZARD EMERGENCY RESPONSE ACT AND NEW YORK STATE DEPARTMENT OF LABOR CODE RULE 56. ALL EXTERIOR ABATEMENT ACTIVITY THAT DISTURBS FRIABLE ASBESTOS MATERIALS OR RESULTS IN NON-FRIABLE ASBESTOS MATERIALS BEING MADE FRIABLE SHALL BE PERFORMED UNDER NEGATIVE PRESSURE WITHIN AN ISOLATED WORK AREA.
4. THE HAZARDOUS MATERIALS DRAWINGS ASSOCIATED WITH THIS PROJECT WERE PRODUCED FROM AVAILABLE FLOOR PLANS. ACCORDINGLY, VARIATIONS WITHIN THE DEMARCATED WORK AREAS ARE EXPECTED AND SHALL HAVE NO IMPACT ON THE CONTRACT PRICE OR SCHEDULE.
5. THE HAZARDOUS MATERIALS DRAWINGS DO NOT SHOW EXISTING MECHANICAL, ELECTRICAL, PLUMBING, COMMUNICATION, SECURITY SYSTEMS OR CASEWORK PRESENT WITHIN OR IN THE PROXIMITY OF THE BUILDING. REFER TO THE ARCHITECTURAL, PLUMBING, MECHANICAL AND ELECTRICAL REMOVAL AND NEW WORK DRAWINGS FOR COORDINATION. ALL LOW VOLTAGE WIRING, INCLUDING BUT NOT LIMITED TO, SPEAKER WIRING, ALARM SYSTEM WIRING, TELEPHONE, DATA AND/OR TELEVISION CABLES SHALL BE PROTECTED IN PLACE DURING ASBESTOS ABATEMENT ACTIVITIES. MATERIALS SPECIFIED FOR REMOVAL ARE QUANTIFIED IN THE MATERIALS SCHEDULE IN DOCUMENT 028213.
6. PLACEMENT OF PERSONAL AND WASTE DECONTAMINATION UNITS WILL BE COORDINATED WITH AND APPROVED BY THE OWNER'S REPRESENTATIVE.
7. ASBESTOS CONTAINING MATERIALS (ACM) HAVE BEEN IDENTIFIED IN THE AREAS INDICATED ON THIS DRAWING AND INCLUDE JOINT COMPOUND, PIPE INSULATION AND MUDDED FITTING INSULATION. ASBESTOS ABATEMENT WORK SHALL BE PERFORMED AS SPECIFIED IN SECTION 028213.
8. THE CONTRACTOR IS RESPONSIBLE FOR THE REMOVAL OF EXISTING NON-ASBESTOS MATERIALS INCLUDING, BUT NOT LIMITED TO, PIPE INSULATION, CEILING TILES AND WALL PLASTER AND/OR OTHER WALL CONSTRUCTION AS REQUIRED TO ACCESS PIPE INSULATION AND/OR MUDDED FITTING INSULATION PRESENT WITHIN THE SCHEDULED REGULATED WORK AREAS. THE CONTRACTOR SHALL VERIFY FIELD CONDITIONS, MEASUREMENTS AND QUANTITIES. REPORT ANY DISCREPANCIES TO THE CONSTRUCTION MANAGER IN WRITING.
9. THE CONTRACTOR IS RESPONSIBLE FOR CONFIRMING THE LOCATIONS, TIMING AND EXTENTS OF REMOVALS AND INSTALLATIONS WITH THE APPROPRIATE CONTRACTOR.
10. THE ASBESTOS ABATEMENT CONTRACTOR IS RESPONSIBLE FOR THE REMOVAL AND LEGAL DISPOSAL OF ASBESTOS-CONTAINING AND ASBESTOS-CONTAMINATED MATERIALS AS INDICATED IN THE PROJECT SPECIFICATIONS AND DRAWINGS.
11. THE ASBESTOS ABATEMENT CONTRACTOR IS RESPONSIBLE FOR THE REMOVAL OF ALL WALL MOUNTED ITEMS FROM DRYWALL WITH ASBESTOS CONTAINING JOINT COMPOUND INCLUDING BUT NOT LIMITED TO CLASSROOM UNIT VENTILATORS, MOLDINGS, TRIM, THERMOSTATS, WIRING, AND BACKER PLATES. ALL PATCHING OF DRYWALL SHALL BE PERFORMED BY THE ASBESTOS ABATEMENT CONTYRACTOR. INSTALL NEW UNIT VENTILATOR WALL ANCHORS, BACKER PLATES FOR TEMPERATURE SENSORS OR OTHER COMPONENTS IDENTIFIED FOR INSTALLATION ON OR IN DRYWALL AS SHOWN ON THE ARCHITECTURAL AND MECHANICAL DRAWINGS.
12. THE ASBESTOS ABATEMENT CONTRACTOR IS TO NOTIFY THE ARCHITECT IN WRITING OF ANY DISCREPANCIES BETWEEN THE CONTRACT DOCUMENTS AND FIELD CONDITIONS PRIOR TO THE START OF WORK.
13. THE ASBESTOS ABATEMENT CONTRACTOR IS RESPONSIBLE FOR REVIEWING AND UNDERSTANDING THE ASSUMPTIONS AND LIMITATIONS INCLUDED IN THE ENVIRONMENTAL SERVICES REPORT INCLUDED IN THE SPECIFICATION.



1

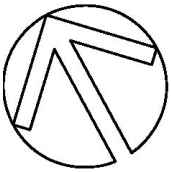
Uriah Hill School - Existing Basement Level Plan

UH.101.00

SCALE: 1/8" = 1'-0"

KEYED REMOVAL NOTES

- 1 EXISTING DRYWALL JOINT COMPOUND CONTAINS ASBESTOS. ABATEMENT CONTRACTOR SHALL PERFORM ALL CUTTING AND PATCHING OF DRYWALL AND INSTALL ANY NEW FASTENERS, ATTACHMENTS, ETC. COORDINATE WITH THE MECHANICAL CONTRACTOR.
- 2 REMOVE ASBESTOS CONTAINING PIPE AND FITTING INSULATION ABOVE THE CEILING FOR SUBSEQUENT WORK BY APPROPRIATE CONTRACTORS. COORDINATE TIMING AND EXTENTS OF WORK WITH THE APPROPRIATE CONTRACTORS.

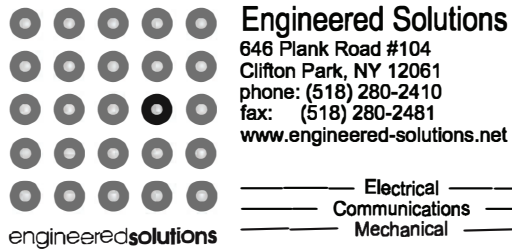


Architect:
Hamlin Design Group
915 Broadway, Suite 101A
Albany, New York 12207
Tel: 518.724.5159
Fax: 518.320.8633
Web: hamlindesigngroup.com

Hazardous Material Consultant:



MEP Engineer:



Client:



Peekskill City School District
1031 Elm St.
Peekskill, NY 10566

Peekskill Reconstruction

SED Project: 66-15-00-01-0-005-020

HDG Project: 201

Oakside Elementary

1072 Elm St.,
Peekskill, NY 10566

SED Project: 66-15-00-01-0-007-014

HDG Project: 202

Uriah Hill School

980 Pernart Ave.,
Peekskill, NY 10566

SED Project: 66-15-00-01-0-008-017

HDG Project: 203

Woodside Elementary

612 Depew St.,
Peekskill, NY 10566

SED Project: 66-15-00-01-0-014-005

HDG Project: 204

Middle School

212 Ringgold St.,
Peekskill, NY 10566

DRAWN BY:

K.1

ISSUE: 12/20/2011



DESCRIPTION

Existing Basement Level Hazardous Materials Plan

U-H.100.00

(ALTERNATE NO. 1)

GENERAL NOTES - POWER DISTRIBUTION

- A. PROVIDE (2) #10, (1) #10 EG WIRING FOR 120V, 20A BRANCH CIRCUITS EXCEEDING 100 FEET.
- B. THE DRAWINGS SHOW GENERAL LOCATION OF DEVICES AND CONTROL EQUIPMENT. THE CONTRACTOR SHALL INSTALL ALL DEVICES AND CONTROLS TO MEET ALL NEC REQUIREMENTS. COORDINATE THE EXACT LOCATION IN THE FIELD.
- C. THE ELECTRICAL CONTRACTOR SHALL COORDINATE ALL ELECTRICAL CONNECTIONS TO ELECTRICAL EQUIPMENT PROVIDED BY OTHERS PRIOR TO ROUGH-IN.
- D. PROVIDE DEDICATED NEUTRALS FOR ALL 120V, 20A, SINGLE PHASE BRANCH CIRCUITS.
- E. DO NOT INSTALL NORMAL AND EMERGENCY POWER IN THE SAME RACEWAY, JUNCTION BOX, OR OUTLET BOX. PROVIDE SEPARATE OR SEGREGATED RACEWAY SYSTEMS.
- F. WHERE BREAKERS ARE INSTALLED IN EXISTING PANELBOARDS, THE BREAKERS SHALL BE LISTED/LABELED FOR USE IN THE EXISTING PANEL AND THE KAIC RATING SHALL MATCH THE KAIC RATING OF THE EXISTING PANEL.

GENERAL NOTES - REMOVALS

- A. THIS INFORMATION REPRESENTS EXISTING CONDITIONS BASED ON ORIGINAL DRAWINGS AND OBSERVED SITE CONDITIONS. NOT ALL CONDUIT, WIRE, FIXTURES AND DEVICES ARE SHOWN. FIELD VERIFY THE EXACT REQUIREMENTS IN ALL REMOVAL AREAS. DISCONNECT AND REMOVE ALL ELECTRICAL WORK THAT IS SHOWN DASHED ON REMOVAL PLANS AND ALL ELECTRIC WORK IN RENOVATION AREAS THAT IS NOT BEING REUSED. REMOVE ALL BRANCH CIRCUITING, LOW VOLTAGE CABLING, SUPPORTING DEVICES, RACEWAY, AND ASSOCIATED TERMINATION HARDWARE.
- B. "ERL" ADJACENT TO A DEVICE, FIXTURE OR PIECE OF EQUIPMENT INDICATES AN EXISTING ITEM TO BE RELOCATED. DISCONNECT AND REMOVE THE ITEM. REMOVE ALL UNNECESSARY RACEWAY AND WIRING. REINSTALL AND RECONNECT THE ITEM AS REQUIRED.
- C. "EXR" ADJACENT TO A DEVICE FIXTURE OR PIECE OF EQUIPMENT INDICATES AN EXISTING ITEM TO REMAIN. MAINTAIN EXISTING CONNECTIONS TO EQUIPMENT UNLESS NOTED OTHERWISE.
- D. PROVIDE FIRE STOPPING CUTTING, PATCHING AND PAINTING AS REQUIRED TO REPAIR HOLES OR OTHER PHYSICAL DEFECTS CAUSED BY THE REMOVAL OR INSTALLATION OF EQUIPMENT AND DEVICES. THE CONTRACTOR SHALL PROVIDE A QUALIFIED TRADES PERSON TO RESTORE FINISHED WALLS TO ORIGINAL CONDITIONS AND PAINT TO MATCH EXISTING COLORS.
- E. PROVIDE STAINLESS STEEL BLANK COVER PLATES ON ALL UNUSED ELECTRICAL BOXES AFTER DEMOLITION AND INSTALLATION WORK IS COMPLETE.
- F. WHERE EXISTING DEVICES ARE BEING REMOVED AND THE REMOVAL BREAKS AN EXISTING BRANCH CIRCUIT TO DOWNSTREAM DEVICE THE CONTRACTOR SHALL PROVIDE ALL WIRING TO PERMANENTLY RECONNECT THE REMAINING DEVICE EQUIPMENT OR FIXTURE.
- G. THE CONSTRUCTION MANAGER OR GENERAL CONTRACTOR WILL SCHEDULE ALL REMOVAL WORK. PRIOR TO BEGINNING REMOVAL WORK PROVIDE AN EXISTING CONDITION REPORT WITH PICTURES AND SUBMIT TO THE CONSTRUCTION MANAGER. ANY DAMAGES OR EXISTING CONDITIONS THAT ARE NOT DOCUMENTED WILL BE CORRECTED BY THE CONTRACTOR PRIOR TO FINAL COMPLETION.
- H. LEGALLY DISPOSE OF ALL ELECTRICAL WIRING, DEVICES, BALLAST, LAMPS ETC. FOLLOW ALL LOCAL, STATE AND FEDERAL REGULATIONS REGARDING DISPOSAL OF HAZARDOUS WASTE.

GENERAL NOTES - INSTALLATION

- A. COORDINATE DEVICE LOCATIONS WITH ARCHITECTURAL ELEVATIONS PRIOR TO ROUGH-IN. VERIFY DEVICE LOCATIONS ABOVE MILLWORK TO ENSURE CLEARANCE ABOVE THE COUNTER-TOP AND BACKSPLASH. DEVICES THAT INTERFERE WITH NEW CASEWORK, MILLWORK OR EQUIPMENT SHALL BE RELOCATED AT NO ADDITIONAL COST TO THE CONTRACT.
- B. WHERE DEVICES ARE SCHEDULED TO BE INSTALLED IN CASEWORK AND MILLWORK SUPPLIED BY THE GENERAL CONTRACTOR, OBTAIN A SHOP DRAWING FROM THE GENERAL CONTRACTOR PRIOR TO ROUGHING. WHERE REQUIRED, CUT OPENINGS IN MILLWORK OR COORDINATE OPENINGS WITH THE GENERAL CONTRACTOR.
- C. COORDINATE ALL CONDUIT RUNS WITH OTHER TRADES PRIOR TO ROUGH-IN. RELOCATE ANY CONDUITS AS NECESSARY TO PERMIT INSTALLATION OF DUCTWORK OR PIPING.
- D. INSTALL ALL CIRCUITING CONCEALED INSIDE WALL CAVITY WHERE EVER POSSIBLE. PROVIDE SURFACE MOUNTED BACKBOXES AND RACEWAY FOR WIRING DEVICES LOCATED ON EXISTING SOLID WALL CONSTRUCTION. PROVIDE SHALLOW TYPE BACKBOXES FOR SURFACE MOUNTED POWER AND SWITCHING APPLICATIONS. REFER TO ARCHITECTURAL PLANS FOR WALL TYPES.
- E. FIRESTOP ALL LOW VOLTAGE SLEEVES AND PENETRATIONS AFTER INSTALLATION OF CABLE.
- F. PROVIDE OPEN TOP CABLE HANGERS 4" ON CENTER SUPPORTED TO SUPPORT ALL LOW VOLTAGE CABLING ABOVE ACCESSIBLE CEILINGS. PROVIDE SEPARATE CABLE HANGERS FOR BACKBONE CABLING, HORIZONTAL CABLING, PUBLIC ADDRESS & SECURITY CABLING, AND FIRE ALARM CABLING. INSTALL ALL EXPOSED CABLES IN EMT CONDUIT OR SURFACE RACEWAY IN FINISHED AREAS.
- G. ALL LOW VOLTAGE CABLING SHALL BE PLENUM RATED.
- H. OBTAIN WIRING AND INSTALLATION DIAGRAMS FOR ALL ELECTRICAL CONNECTIONS TO EQUIPMENT PROVIDED BY THE GENERAL, MECHANICAL OR PLUMBING CONTRACTORS PRIOR TO ROUGHING. WORK THAT IS NOT PROPERLY COORDINATED WILL BE RELOCATED AT NO COST TO THE OWNER.
- I. PROVIDE HORIZONTAL AND VERTICAL RACEWAY AS REQUIRED TO TRANSITION FROM UNIT VENTILATORS TO ACCESSIBLE CEILINGS. CONTRACTOR IS TO ASSUME VERTICAL RISE IS IN THE FURTHEST CORNER AWAY FROM EQUIPMENT CONNECTION POINT AS INDICATED IN PLANS. REFER TO PLANS FOR CEILING TYPES.

POWER

- MOTOR CONNECTION
- EXISTING FLUSH MOUNTED 208Y/120V BRANCH CIRCUIT PANELBOARD
- INDICATES HOMERUN TO PANEL
- PANEL NAME AND CKT NUMBERS INDICATED
- PROVIDE (2) #12 AWG, (1) #12 AWG EGC IN 3/4" UNLESS OTHERWISE NOTED

GENERAL

- INSTALLATION NOTE
- OFFSET FOR CLARITY

ABBREVIATIONS

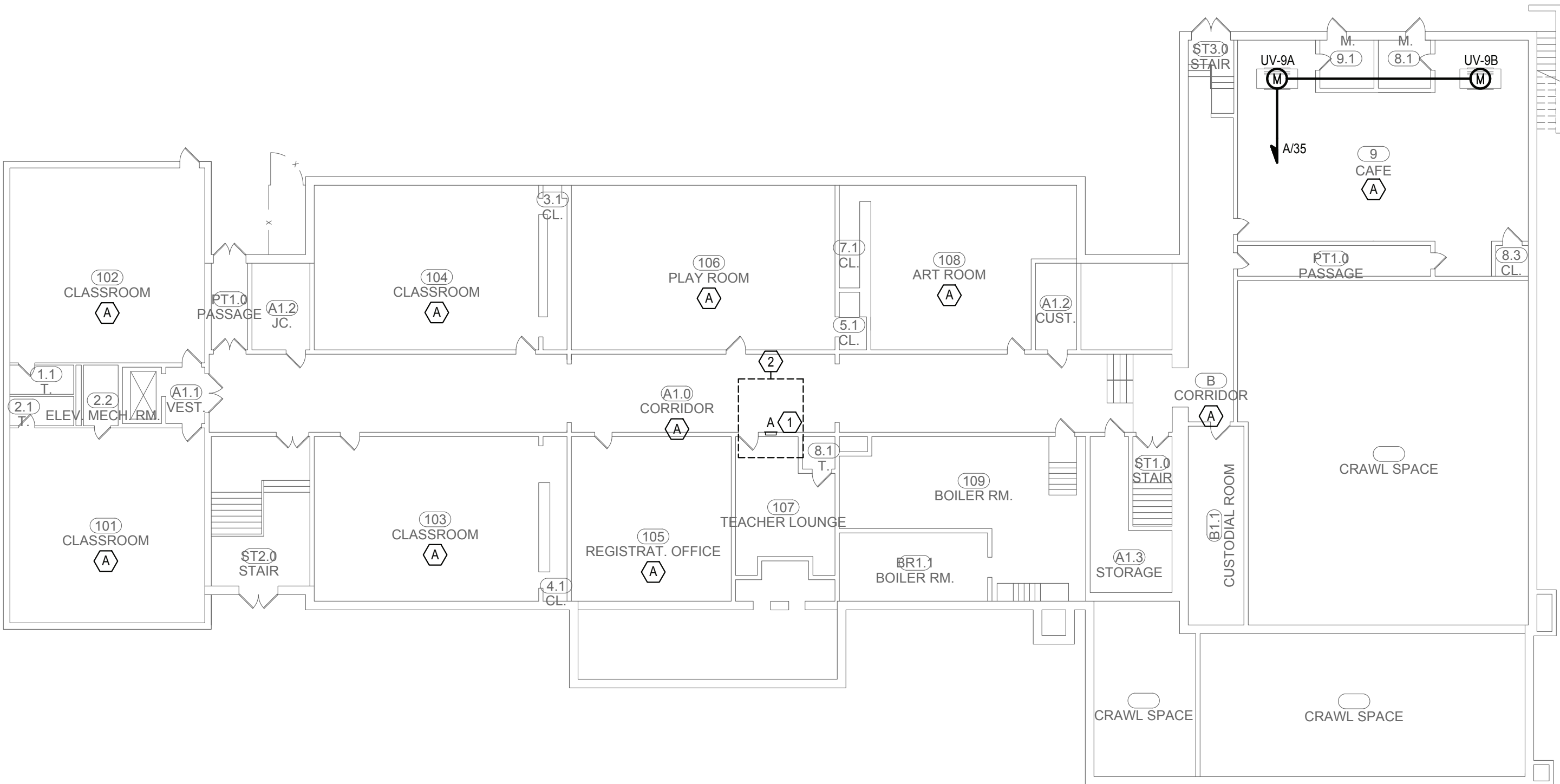
A	AMPERE
AC	ABOVE COUNTER
AF	ABOVE FINISHED FLOOR
AFG	ABOVE FINISHED GRADE
AFCI	ARC FAULT CIRCUIT INTERRUPTER
AIC	AMPERES INTERRUPTING CAPACITY
AL	ALUMINUM
ASYM	ASYMMETRICAL
ATS	AUTOMATIC TRANSFER SWITCH
AUX	AUXILIARY CONTACTS
AWG	AMERICAN WIRE GAUGE
BD	BUS DUCT
BR	BRANCH
C	CONDUIT
CB	CIRCUIT BREAKER
CD	CANDELA
CH	CABINET HEATER
CKT	CIRCUIT
CT	CURRENT TRANSFORMER
CU	COPPER
CATV	CABLE TELEVISION
CCTV	CLOSED CIRCUIT TELEVISION
CLG	CEILING
CONT	CONTACTOR
CP	CONTROL PANEL
DC	DIRECT CURRENT
Δ	DELTA CONNECTED
DISC	DISCONNECT
DF	DRINKING FOUNTAIN
DPST	DOUBLE POLE, SINGLE THROW
DPDT	DOUBLE POLE, DOUBLE THROW
EBB	ELECTRIC BASEBOARD
EC	ELECTRICAL CONTRACTOR
EG	EQUIPMENT GROUND
EGC	EQUIPMENT GROUND CONDUCTOR
EM	EMERGENCY
EP	EXPLOSION PROOF
EPR	ETHYLENE PROPYLENE RUBBER
EQUIP	EQUIPMENT
EXR	EXISTING TO REMAIN
ERL	EXISTING TO BE RELOCATED
EXIST	EXISTING
(E)	EXISTING
EXP	EXPLOSION PROOF
ELECT	ELECTRIC
EMT	ELECTRIC METALLIC TUBING
FA	FIRE ALARM
FACP	FIRE ALARM CONTROL PANEL
FARAP	FIRE ALARM REMOTE ANNUNCIATOR PANEL
FBO	FURNISHED BY OWNER
FC	FOOTCANDLE
FCAN	FULL CAPACITY ABOVE NORMAL
FCBN	FULL CAPACITY BELOW NORMAL
FLA	FULL LOAD AMPERES
FLUOR	FLUORESCENT
FVNR	FULL VOLTAGE, NON-REVERSING
FVR	FULL VOLTAGE, REVERSING
G	GUARD
GC	GENERAL CONTRACTOR
GEN	GENERATOR
GF	GROUND FAULT
GFI	GROUND FAULT CIRCUIT INTERRUPTER
GND	GROUND
GRS	GALVANIZED RIGID STEEL
H	HOSPITAL GRADE
HOA	HAND-OFF-AUTOMATIC
HP	HORSEPOWER
HPS	HIGH PRESSURE SODIUM
HV	HIGH VOLTAGE
HZ	HERTZ
IC	INTERCOM
IG	ISOLATED GROUND
INCAD	INCANDESCENT
IMC	INTERMEDIATE METAL CONDUIT
JB	JUNCTION BOX
KAIC	THOUSAND AMPERE INTERRUPTING CAPACITY
KV	KILOVOLT
KVA	KILOVOLT-AMPERE
KW	KILOWATT
K	KILO (THOUSAND)
KCM	THOUSAND CIRCULAR MILS
KCML	THOUSAND CIRCULAR MILS
LTG	LIGHTING
LSIG	LONG TIME-SHORT TIME-INSTANTANEOUS-GROUND FAULT
LV	LOW VOLTAGE
M	MEGA (MILLION)
MATV	MASTER ANTENNA TELEVISION
MFS	MAIN FUSED SWITCH
MC	MECHANICAL CONTRACTOR
MCB	MAIN CIRUIT BREAKER
MCC	MOTOR CONTROL CENTER
MH	METAL HALIDE
MLO	MAIN LUGS ONLY
MM	MULTIMODE FIBER
MV	MEDIUM VOLTAGE
MVA	MEGAVOLT-AMPERE
NEC	NATIONAL ELECTRICAL CODE
NC	NORMALLY CLOSED
NO	NORMALLY OPEN
NL	NIGHT LIGHT
N	NEUTRAL
NF	NONFUSED
NIC	NOT IN CONTRACT
NTS	NOT TO SCALE
OCPP	OVER CURRENT PROTECTION DEVICE
OH	OVERHEAD
OL	OVERLOAD
PB	PULLBOX
PC	PLUMBING CONTRACTOR
PF	POWER FACTOR
PHL	PANEL
PT	POTENTIAL TRANSFORMER
PVC	POLYVINYL CHLORIDE
Ø	PHASE
PH	PHASE
P	POLE
PL	PILOT LIGHT
PM	PLUGMOLD
PP	POWER PANEL
PWR	POWER
RVNR	REDUCED VOLTAGE, NON-REVERSING
RM	ROOM
RMS	ROOT MEAN SQUARED
RTU	ROOF TOP UNIT
SM	SINGLE MODE FIBER
SS	SURGE SUPPRESSION
SST	SOLID-STATE TRIP DEVICE
ST	SHUNT-TRIP
SW	SWITCH
SWBD	SWITCHBOARD
SYM	SYMMETRICAL
T	TAMPER RESISTANT
TDR	TIME DELAY RELAY
TYP	TYPICAL
TCP	TEMPERATURE CONTROL PANEL
TSTAT	THERMOSTAT
TV	TELEVISION
UG	UNDERGROUND
UH	UNIT HEATER
USB	UNIVERSAL SERIAL BUS
V	VOLT
VR	VOLT-AMPERE
VP	VAPORPROOF
W	WATT
WG	WIRE GUARD
WM	WIREMOLD
WP	WEATHERPROOF
XFMR	TRANSFORMER
XLP	CROSS LINKED POLYETHYLENE
XP	EXPLOSION PROOF
Y	WYE CONNECTED

DRAWING NOTES:

1. PROVIDE (1)-20A, 1-POLE BRANCH CIRCUIT BREAKER CUTLER HAMMER "PRL" SERIES.
2. PANELBOARD LOCATED ON THE FIRST FLOOR.

CEILING SCHEDULE

DESIGNATION	DESCRIPTION
A	ACCESSIBLE CEILING
B	INACCESSIBLE CEILING
C	EXPOSED STRUCTURE



1
U-E.001.00

Uriah Hill School - Basement Power Plan

SCALE: 1/16" = 1'-0"

Architect:

Hamlin Design Group
915 Broadway, Suite 101A
Albany, New York 12207
Tel: 518.724.5159
Fax: 518.320.8633
Web: hamlindesigngroup.com

Hazardous Material Consultant:

A Ambient Environmental, Inc.
Comprehensive Building Science solutions
NYS/NES Certified WBE
E SBA EDW058 E DBE

MEP Engineer:

Engineered Solutions
646 Plank Road #104
Clifton Park, NY 12061
phone: (518) 280-2410
fax: (518) 280-2481
www.engineered-solutions.net
Electrical
Communications
Mechanical
ES # 19071

Client:

Peekskill Schools

Peekskill City School District
1031 Elm St.
Peekskill, NY 10566

Peekskill Reconstruction

SED Project: 66-15-00-01-0-005-020
HDG Project: 201
Oakside Elementary
200 Decatur Ave.,
Peekskill, NY 10566

SED Project: 66-15-00-01-0-007-014
HDG Project: 202
Uriah Hill School
980 Pemart Ave.,
Peekskill, NY 10566

SED Project: 66-15-00-01-0-008-017
HDG Project: 203
Woodside Elementary
612 Depew St.,
Peekskill, NY 10566

SED Project: 66-15-00-01-0-014-005
HDG Project: 204
Middle School
212 Ringgold St.,
Peekskill, NY 10566

DRAWN BY:

SDK

ISSUE: 02/01/2021

REV:

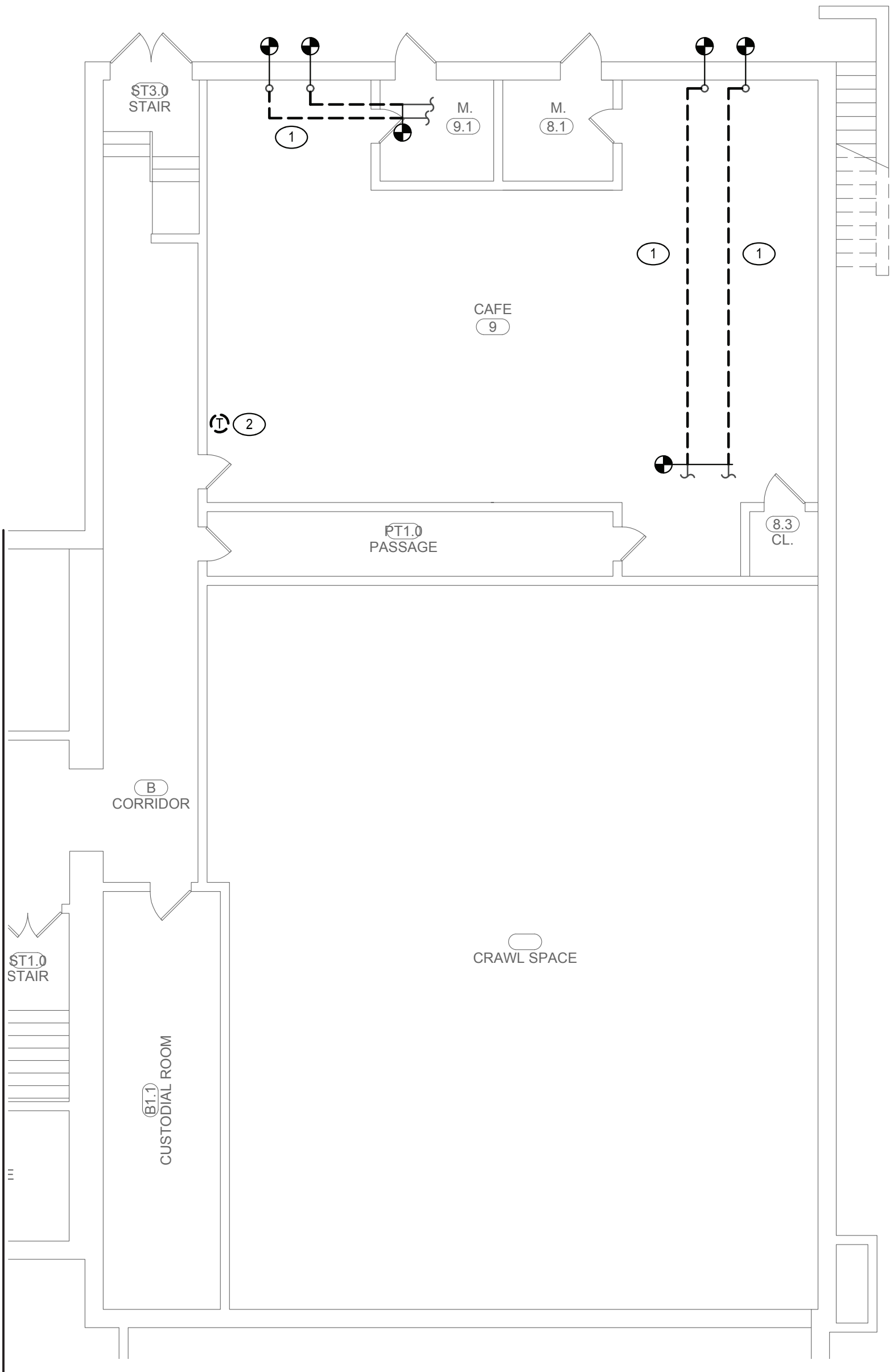
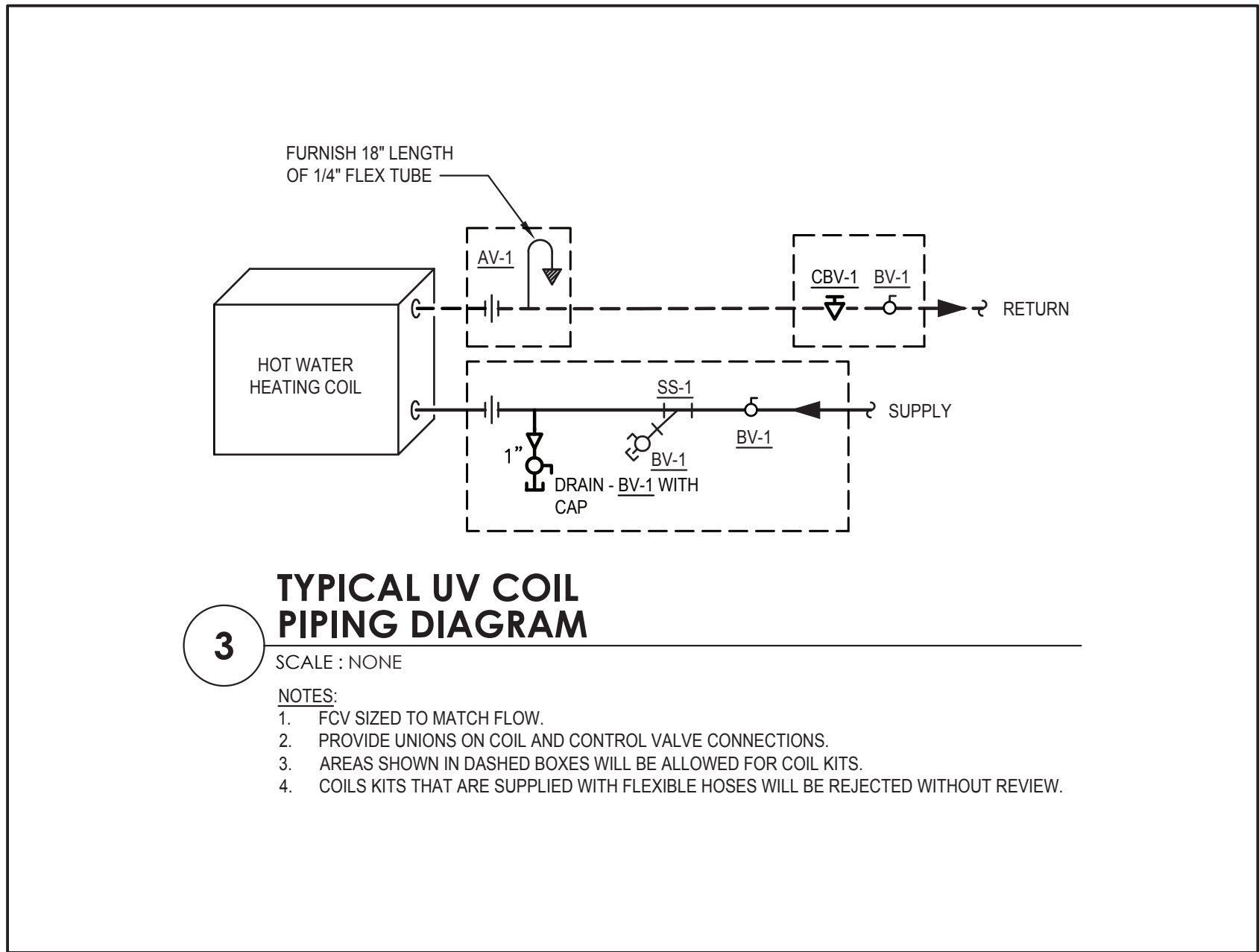


DESCRIPTION

Legend, General Notes and Basement Power Plan

U-E.001.00

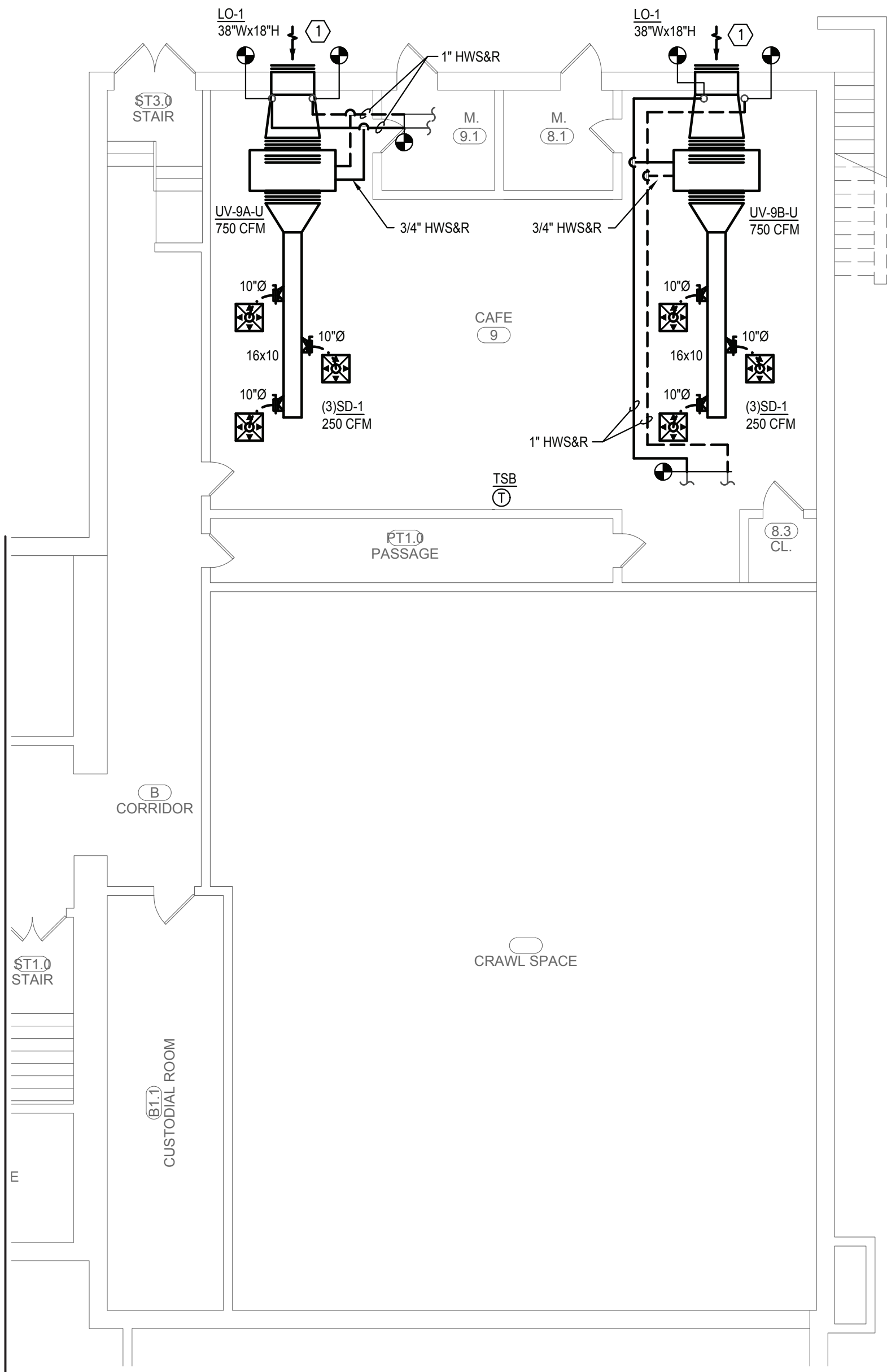
(ALTERNATE NO. 1)



1

Uriah Hill School - Basement Removal Plan

U-M.301.00 SCALE: 1/8" = 1'-0"



2

Uriah Hill School - Basement Duct Plan

U-M.301.00 SCALE: 1/8" = 1'-0"

UNIT VENTILATOR SCHEDULE																			
TAG	LOCATION	TYPE	AIRSIDE PERFORMANCE			HYDRONIC PERFORMANCE								ELECTRICAL DATA			MANUFACTURER & MODEL NO.	NOTES	
			FAN SPEED SETTING	SUPPLY (CFM)	MIN. O.A. (CFM)	CAPACITY (MBH)	E.A.T. (°F)	L.A.T. (°F)	E.W.T. (°F)	L.W.T. (°F)	FLOW RATE (GPM)	W.P.D. (FT.)	FLUID	ROWS	HP	VOLT			PHASE
UV-9A-U	CAFE	HORIZONTAL	MED	750	500	58	22	95	180	101.9	1.5	3.5	WATER	4	1/4	115	1	DAIKIN — UAHF6H10	1,2,3
UV-9B-U	CAFE	HORIZONTAL	MED	750	500	58	22	95	180	101.9	1.5	3.5	WATER	4	1/4	115	1	DAIKIN — UAHF6H10	1,2,3

NOTE:

1. PROVIDE MANUFACTURERS DISCONNECT.
2. PROVIDE UNIT WITH MANUFACTURERS THREE SPEED SWITCH.
3. PROVIDE FACE AND BYPASS.

DIFFUSER, REGISTERS, AND GRILLES											
TAG	MAX CFM	BLOW PATTERN	FACE SIZE	NECK SIZE	VELOCITY (FPM.)	THROW (FT.)	PD	SOUND LEVEL	MATERIAL	MANUFACTURER & MODEL NO.	NOTES
SD-1	330	4-WAY	24x24	10"Ø	600	5	.047	16	STEEL	NAILOR RNS	1,4,5

REMOVAL NOTES: ○

- 1 REMOVE PIPING SHOWN DASHED WITH ALL HANGERS AND SUPPORTS.
- 2 REMOVE THERMOSTAT WITH ALL WIRING. PATCH WALL AS REQUIRED.

DRAWING NOTES: ○

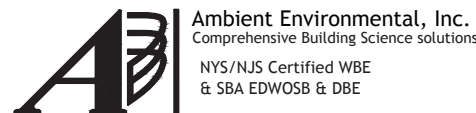
1. INSTALL LOUVER IN EXISTING WINDOW. FIELD VERIFY FINAL LOUVER DIMENSIONS.

Architect:

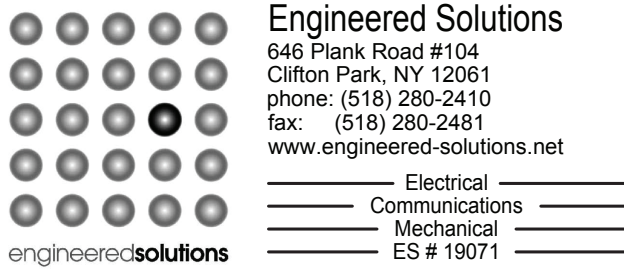
Hamlin Design Group

915 Broadway, Suite 101A
Albany, New York 12207
Tel: 518.724.5159
Fax: 518.320.8633
Web: hamlindesigngroup.com

Hazardous Material Consultant:



MEP Engineer:



Client:



Peekskill City School District

1031 Elm St.
Peekskill, NY 10566

Peekskill Reconstruction

SED Project: 66-15-00-01-0-005-020
HDG Project: 201

Oakside Elementary

200 Decatur Ave.,
Peekskill, NY 10566

SED Project: 66-15-00-01-0-007-014
HDG Project: 202

Uriah Hill School

980 Pemart Ave.,
Peekskill, NY 10566

SED Project: 66-15-00-01-0-008-017
HDG Project: 203

Woodside Elementary

612 Depew St.,
Peekskill, NY 10566

SED Project: 66-15-00-01-0-014-005
HDG Project: 204

Middle School

212 Ringgold St.,
Peekskill, NY 10566

DRAWN BY:
MLB

ISSUE: 02/01/2021
REV:



DESCRIPTION
Basement Removal and HVAC Plan

U-M.301.00

(ALTERNATE NO. 1)