

**Parks, Recreation
and Historic Preservation**

Governor Andrew M. Cuomo

Commissioner Erik Kuleseid

Architect:
Saratoga Associates
21 Congress Street, Suite 201
Saratoga Springs, NY 12866

SARATOGA ASSOCIATES
Landscape Architects, Architects,
Engineers, and Planners, P.C.

Engineer:
Barton and Loguidice
443 Electronics Parkway
Liverpool, NY 13088

Barton & Loguidice

Exhibit Designer:
AMAZE DESIGN
PO Box 51905
Boston, MA 02205-9761

amaze DESIGN

NYS OPRHP Taconic Region
9 Old Post Rd, PO Box 308
Staatsburg, New York 12580
(845) 889-4100
Regional Director: Linda Cooper
District Manager: Garrett Jobson

Project Title:
Philipse Manor Hall State Historic Site
Construction of Elevator/Restroom
Addition, Interior and Exterior
Rehabilitation and Site Enhancements

Project Location:
29 Warburton Ave, Yonkers, NY, 10701

Key Plan

Rev No	Description	Date
1	Addendum No. 4	7/16/21

Drawn By:
TRL


Design By:
TRL

Checked By:
JWC

Approved By:
TWB

Date:
5/28/2021

Seal and Signature



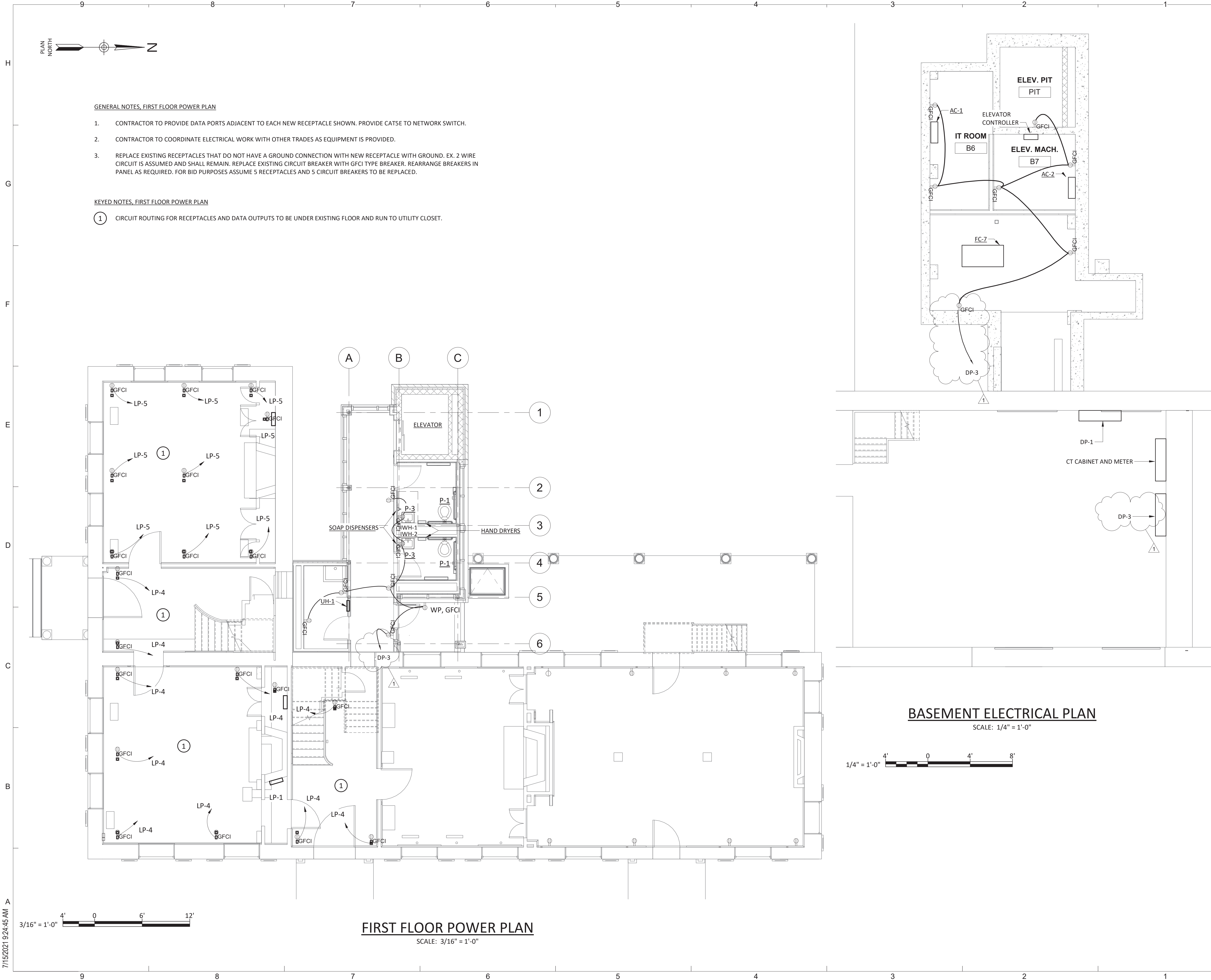
Sheet Title:
ELECTRICAL
COTTAGE
PLANS


Bid Documents

Drawing Number:
E101

Sheet:
1299.029.001

7/15/2021 9:24:43 AM





NEW YORK
STATE OF
OPPORTUNITY.

**Parks, Recreation
and Historic Preservation**

Governor Andrew M. Cuomo

Commissioner Erik Kulesseid

Architect:
Saratoga Associates
21 Congress Street, Suite 201
Saratoga Springs, NY 12866

SARATOGA ASSOCIATES
Landscape Architects, Architects,
Engineers, and Planners, P.C.

Engineer:
Barton and Loguidice
443 Electronics Parkway
Liverpool, NY 13088

Barton & Loguidice

Exhibit Designer:
AMAZE DESIGN
PO Box 51905
Boston, MA 02205-9761

amaze DESIGN

NYS OPRHP Taconic Region
9 Old Post Rd, PO Box 308
Staatsburg, New York 12580
(845) 889-4100
Regional Director: Linda Cooper
District Manager: Garrett Jobson

Project Title:
Philipse Manor Hall State Historic Site
Construction of Elevator/Restroom
Addition, Interior and Exterior
Rehabilitation and Site Enhancements

Project Location:
29 Warburton Ave, Yonkers, NY, 10701

Key Plan

REVISIONS		
Rev No	Description	Date
1	Addendum No. 4	7/16/21

Drawn By:
TRL


Design By:
TRL

Checked By:
JWC

Approved By:
TWB

Date:
5/28/2021

Seal and Signature



Sheet Title:
ELECTRICAL
MUSEUM FIRST
FLOOR PLAN

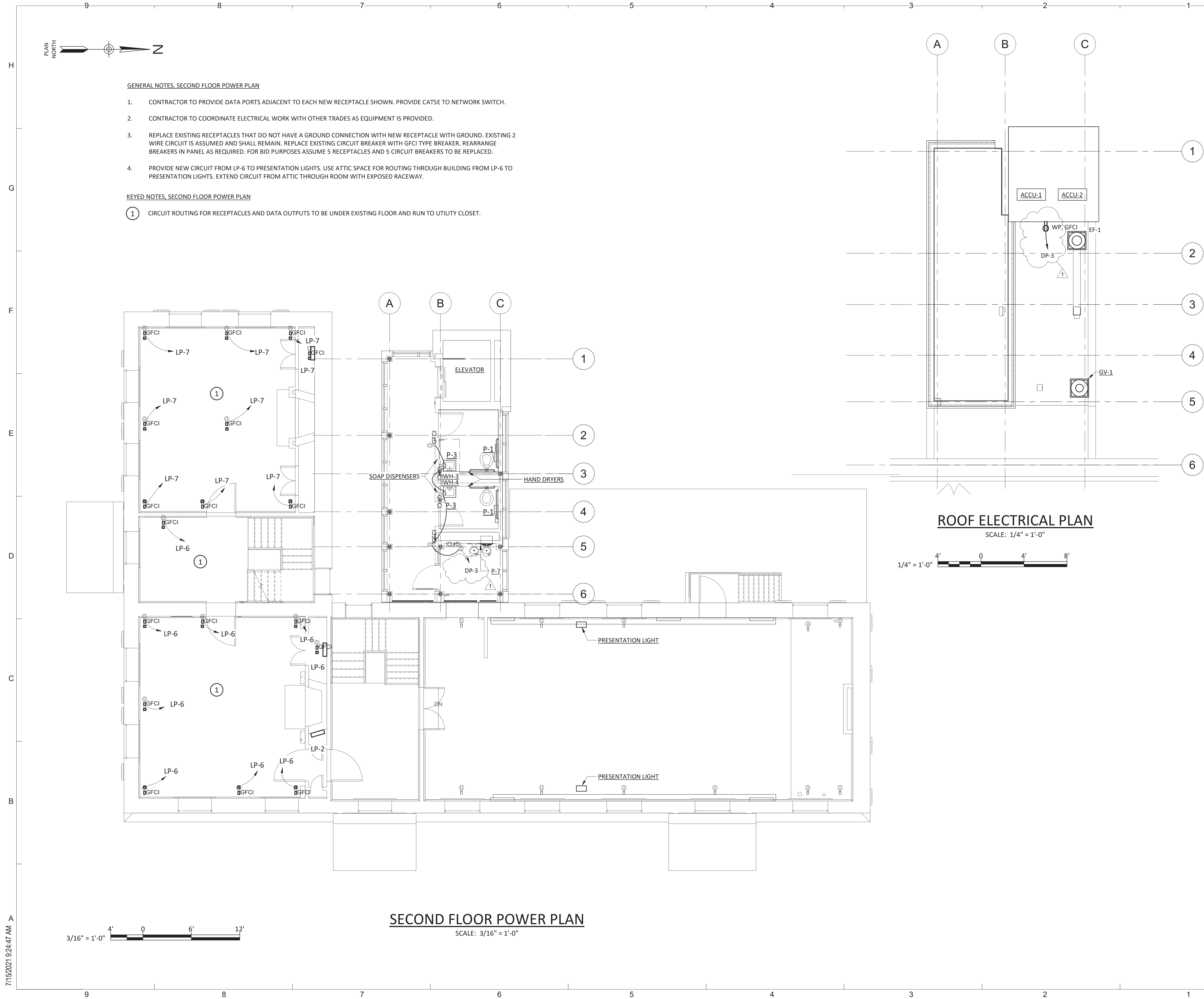
Bid Documents
Project Number:
1299.029.001

Drawing Number:

E111

Sheet:


7/15/2021 9:24:45 AM



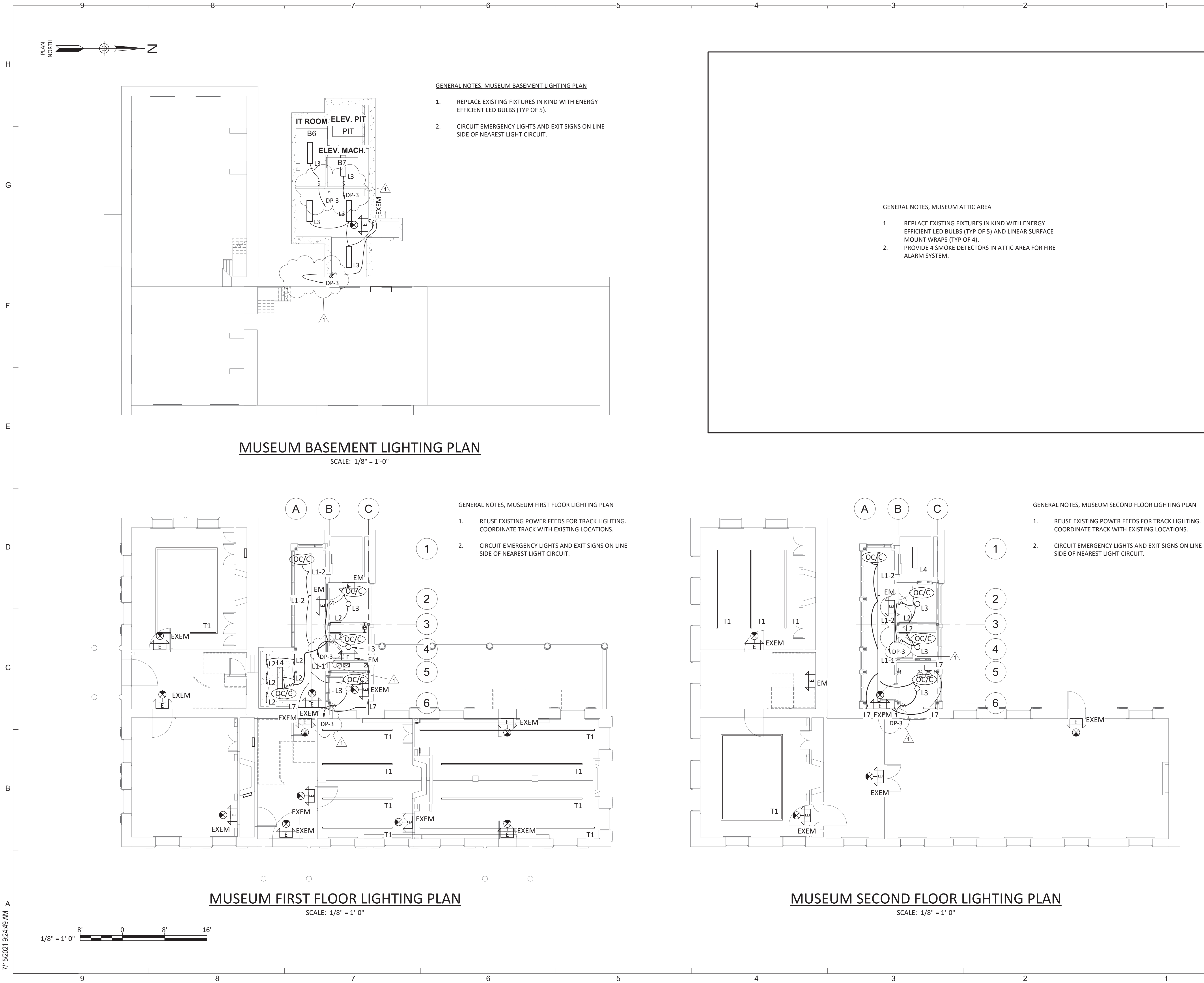
Key Plan


REVISIONS

Rev No	Description	Date
1	Addendum No. 4	7/16/21

Drawn By: TRL	Seal and Signature 
Design By: TRL	
Checked By: JWC	
Approved By: TWB	
Date: 5/28/2021	

Sheet Title: ELECTRICAL MUSEUM SECOND FLOOR PLAN	Drawing Number: E112
Bid Documents Project Number: 1299.029.001	Sheet:





**Parks, Recreation
and Historic Preservation**

Governor Andrew M. CuomoCommissioner Erik Kuleseild

IT IS A VIOLATION OF STATE EDUCATION LAW FOR ANY PERSON, UNLESS UNDER THE DIRECTION OF A LICENSED ARCHITECT/ENGINEER TO ALTER THIS DOCUMENT IN ANYWAY. ALTERATIONS MUST HAVE THE SEAL AFFIXED ALONG WITH A DESCRIPTION OF THE ALTERATIONS, DATE AND ARCHITECT/ENGINEER'S SIGNATURE. COPYRIGHT © 2021

Architect:
Saratoga Associates
21 Congress Street, Suite 201
Saratoga Springs, NY 12866

SARATOGA ASSOCIATES
Landscape Architects, Architects,
Engineers, and Planners, P.C.

Engineer:
Barton and Loguidice
443 Electronics Parkway
Liverpool, NY 13088

Barton & Loguidice

Exhibit Designer:
AMAZE DESIGN
PO Box 51905
Boston, MA 02205-9761

amaze DESIGN

NYS OPRHP Taconic Region
9 Old Post Rd, PO Box 308
Staatsburg, New York 12580
(845) 889-4100
Regional Director: Linda Cooper
District Manager: Garrett Jobson

Project Title:
Philipse Manor Hall State Historic Site
Construction of Elevator/Restroom
Addition, Interior and Exterior
Rehabilitation and Site Enhancements

Project Location:
29 Warburton Ave, Yonkers, NY, 10701

Key Plan

Rev No	Description	Date
1	Addendum No. 4	7/16/21

Drawn By:
TRL


Design By:
TRL

Checked By:
JWC

Approved By:
TWB

Date:
5/28/2021

Seal and Signature



Sheet Title:
ELECTRICAL
MUSEUM
CEILING PLANS

Bid Documents

Project Number:
1299.029.001

Drawing Number:
E113

Sheet: