

IT IS A VIOLATION OF STATE EDUCATION LAW FOR ANY PERSON, UNLESS UNDER THE DIRECTION OF A LICENSED ARCHITECT OR ENGINEER TO ALTER THIS DOCUMENT IN ANY WAY. ALL REVISIONS MUST HAVE THE SEAL APPLIED ALONG WITH A DESCRIPTION OF THE ALTERATIONS, DATE AND ARCHITECT/ENGINEER'S SIGNATURE. COPYRIGHT © 2021

Architect:
 Saratoga Associates
 21 Congress Street, Suite 201
 Saratoga Springs, NY 12866

SARATOGA ASSOCIATES
 Landscape Architects, Architects, Engineers, and Planners, P.C.

Engineer:
 Barton and Loguidice
 443 Electronics Parkway
 Liverpool, NY 13088

Barton & Loguidice

Exhibit Designer:
 AMAZE DESIGN
 PO Box 51905
 Boston, MA 02205-9761

amaze DESIGN

NYS OPRHP Taconic Region
 9 Old Post Rd, PO Box 308
 Staatsburg, New York 12580
 (845) 889-4100
 Regional Director: Linda Cooper
 District Manager: Garrett Jobson

Project Title:
 Philipse Manor Hall State Historic Site
 Construction of Elevator/Restroom
 Addition, Interior and Exterior
 Rehabilitation and Site Enhancements

Project Location:
 29 Warburton Ave, Yonkers, NY, 10701

Key Plan

REVISIONS

Rev No	Description	Date

Drawn By:
RAD

Design By:
SLW

Checked By:
DGM

Approved By:
DGM

Date:
5/28/2021

Seal and Signature

Sheet Title:
 SECOND FLOOR AND ROOF HVAC PLANS

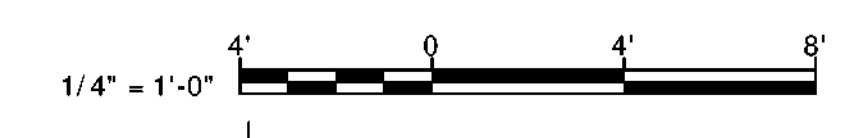
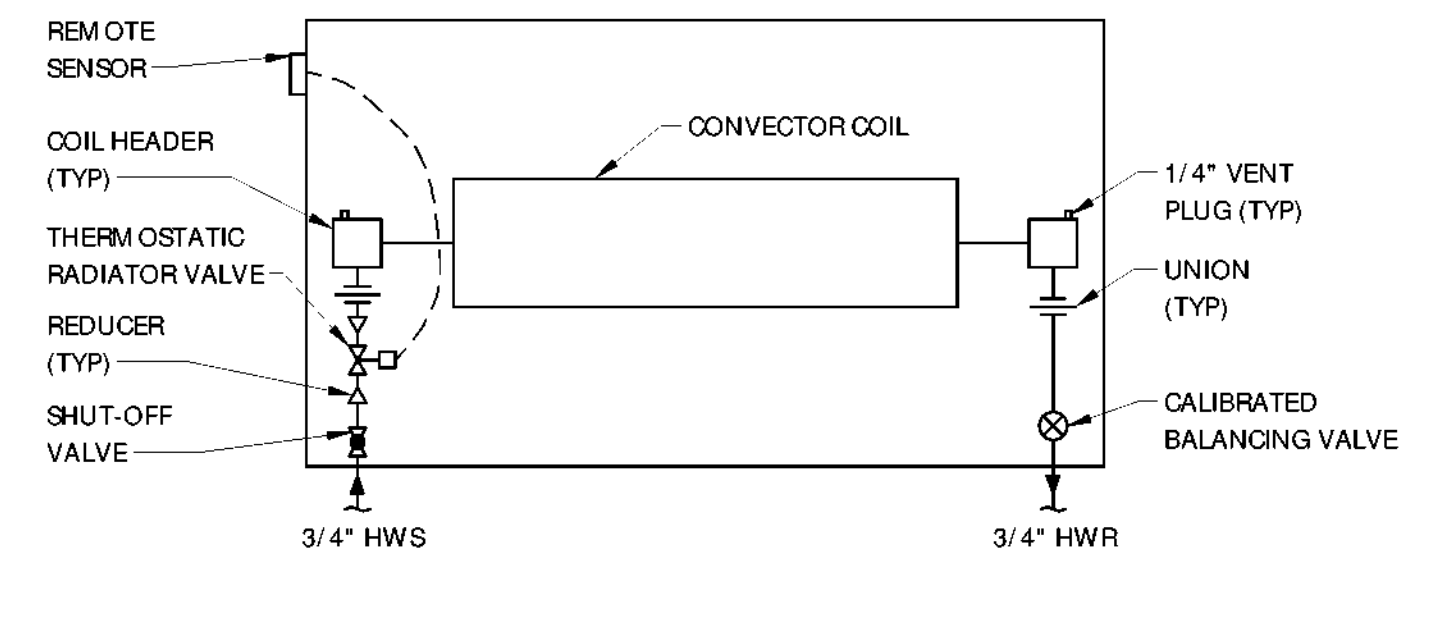
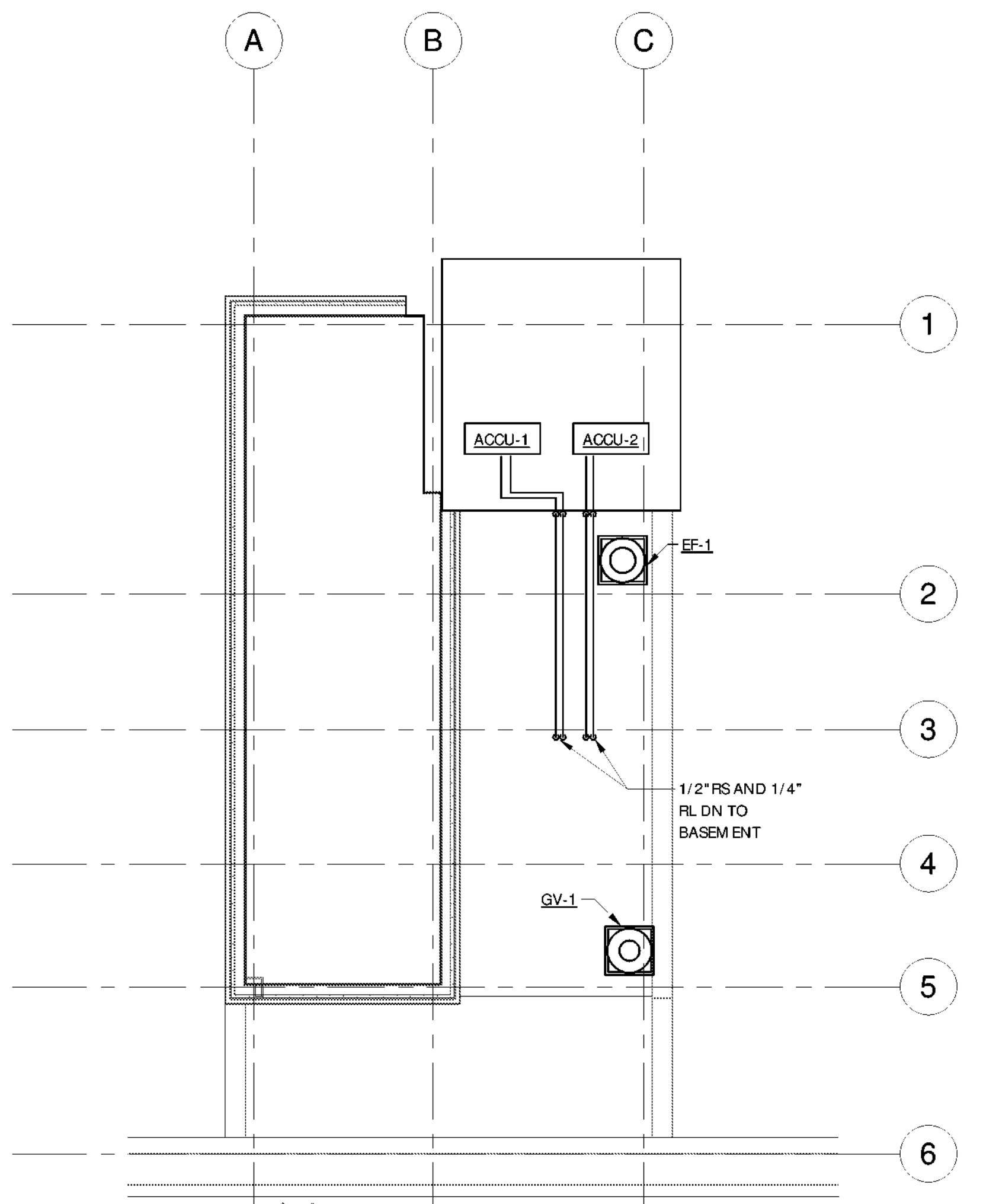
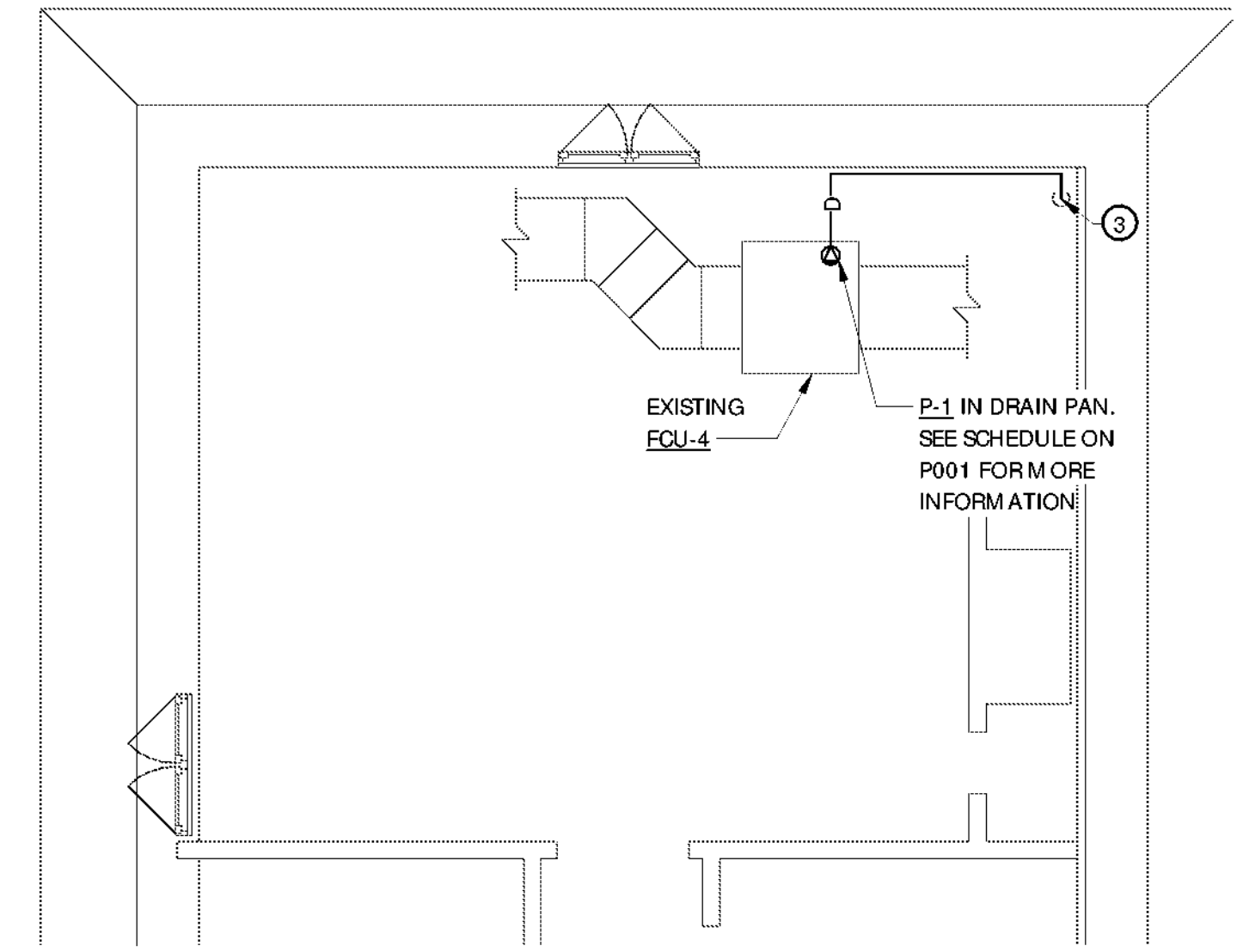
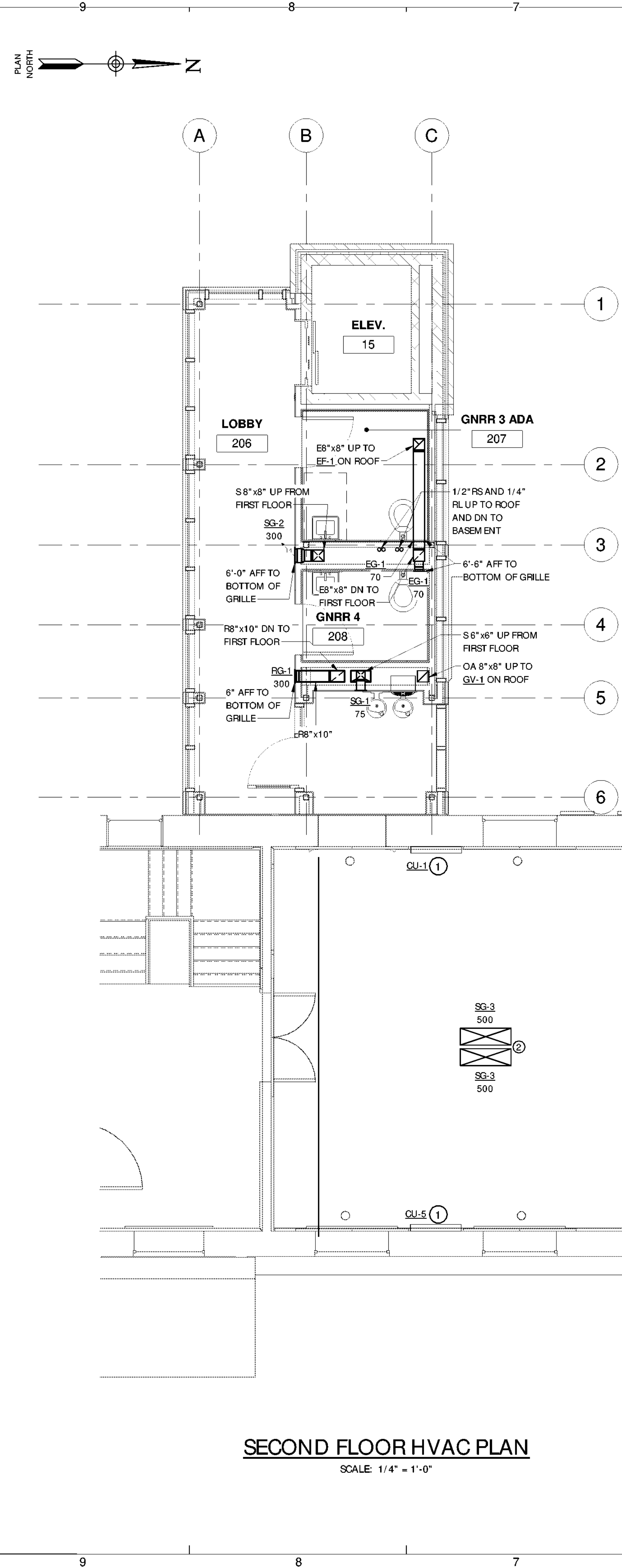
Drawing Number:
M103

Bid Documents

Project Number:
1299.029.001

Sheet:

- KEY NOTES:**
- 1 REPLACE CONVECTION HEATING UNITS IN KIND. SEE DETAIL THIS SHEET.
 - 2 REPLACE EXISTING AIR DISTRIBUTION REGISTERS APPROXIMATELY 17'-0" AFF AND RECONNECT TO EXISTING SUPPLY DUCTS IN ATTIC CRAWL SPACE ABOVE.
 - 3 REMOVE EXISTING DRAIN PIPING BACK TO POINT SHOW. REPLACE WITH NEW DRAIN PIPING AND PUMP LOCATED IN DRAIN PAN UNDER AHU-2.



6/4/2021 9:57:24 AM