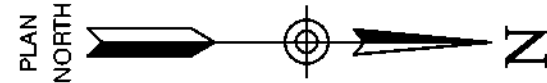
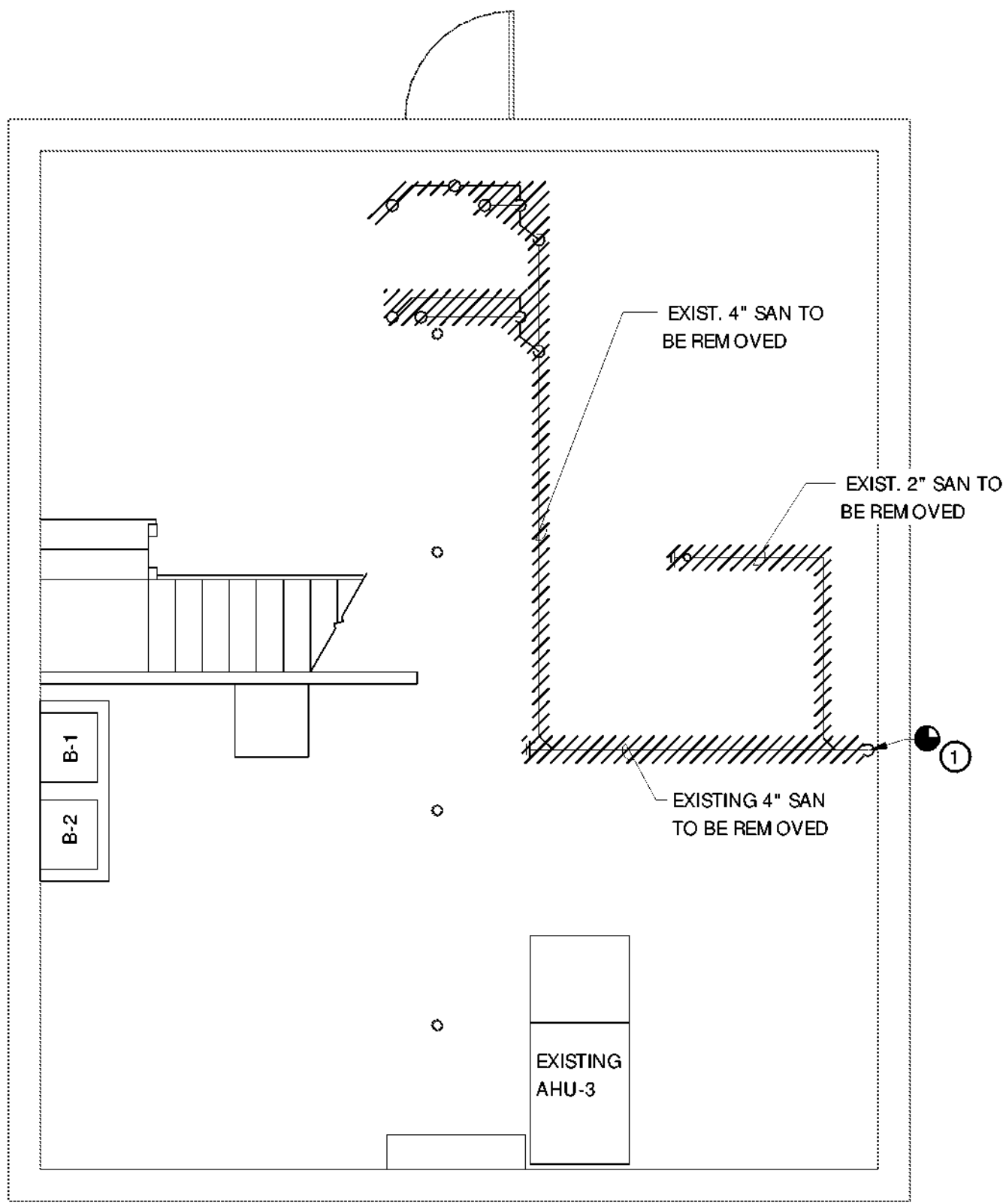


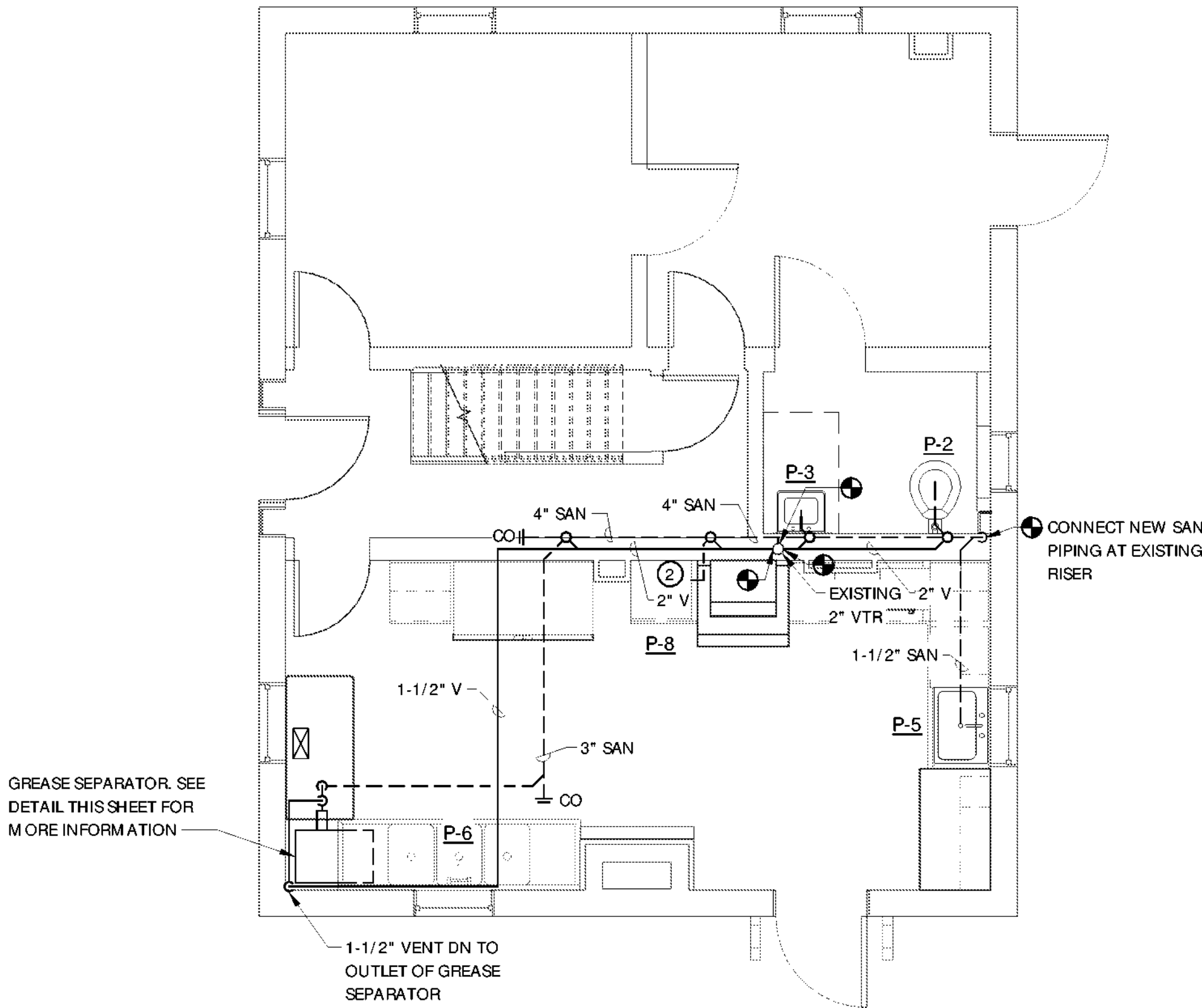
5/28/2021 11:37:30 AM



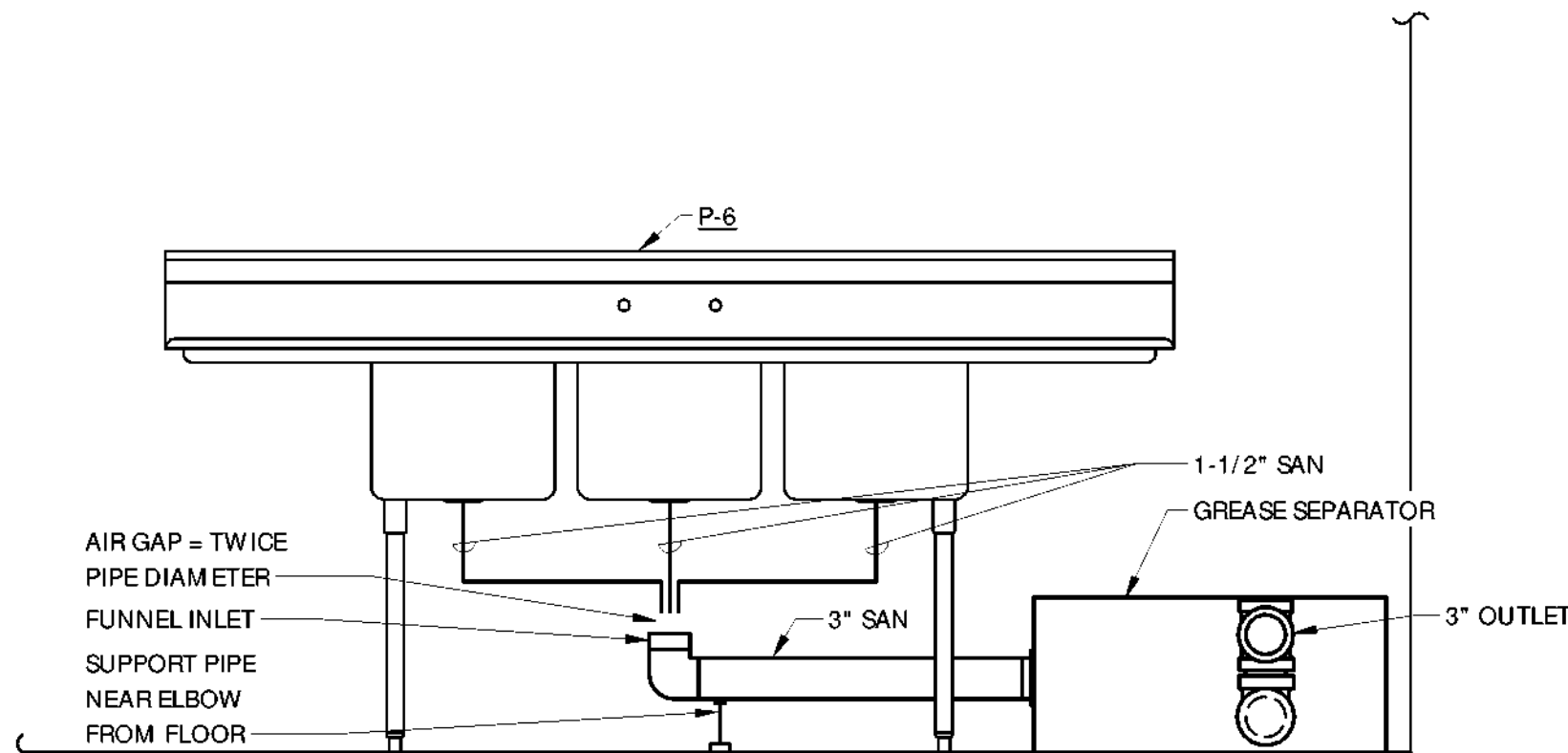
- KEY NOTES:**
- 1 REMOVE THE EXISTING 4-INCH SANITARY LINE TO THE EXISTING 4-INCH RISER. FURNISH AND INSTALL NEW 4-INCH SANITARY AT EXISTING RISER APPROXIMATELY 8-INCHES LOWER THAN THE EXISTING HORIZONTAL LINE TO ACCOMMODATE NEW SANITARY CONNECTIONS AND MAINTAINING PIPE SLOPE AT 1/4-INCH PER FOOT.
  - 2 PROVIDE 1-1/2" STANDPIPE AND EXTEND 12-INCHES AFF. PROVIDE AIR GAP FITTING AND CONNECT NEW DISHWASHER DRAIN.



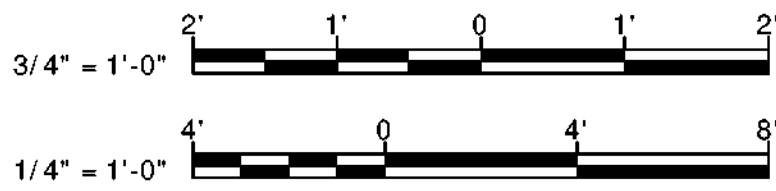
**BASEMENT SANITARY DEMO PLAN PLAN**  
SCALE: 1/4" = 1'-0"




**FIRST FLOOR SANITARY PLAN**  
SCALE: 1/4" = 1'-0"



**3-BAY SINK DRAINAGE DETAIL**  
SCALE: 3/4" = 1'-0"






**Parks, Recreation  
and Historic Preservation**

Governor Andrew M. CuomoCommissioner Erik Kulesseid


**Architect:**  
Saratoga Associates  
21 Congress Street, Suite 201  
Saratoga Springs, NY 12866


**Engineer:**  
Barton and Loguidice  
443 Electronics Parkway  
Liverpool, NY 13088

**Exhibit Designer:**  
AMAZE DESIGN  
PO Box 51905  
Boston, MA 02205-9761



**SARATOGA  
ASSOCIATES**  
Landscape Architects, Architects,  
Engineers, and Planners, P.C.





**NYS OPRHP Taconic Region**  
9 Old Post Rd, PO Box 308  
Staatsburg, New York 12580  
(845) 889-4100  
Regional Director: Linda Cooper  
District Manager: Garrett Jobson

**Project Title:**  
Philipse Manor Hall State Historic Site  
Construction of Elevator/Restroom  
Addition, Interior and Exterior  
Rehabilitation and Site Enhancements

**Project Location:**  
29 Warburton Ave, Yonkers, NY, 10701

**Key Plan**

Rev No	Description	Date


Drawn By:  
**RAD**

Design By:  
**SLW**

Checked By:  
**DGM**

Approved By:  
**DGM**

Date:  
**5/28/2021**



Drawing Number:  
**P104**

**Bid Documents**

Project Number:  
**1299.029.001**

Sheet: