



Highland Falls – Fort Montgomery Central School District

James I. O'Neill Renovation Project

Re-Bid 09.10.2021

SED Control No.'s 44-09-01-04-0-008-017

BCA Project No. 2020-117

Addendum No. 1

September 17, 2021

To: All Bidders

This addendum is hereby made part of the Contract Documents as though it were originally included therein. It modifies the following documents:

Original Drawings and Project Manual dated 09/10/2021.

All Bidders must acknowledge receipt of this Addendum in the space provided on the Form of Proposal.

RE-ISSUED 24" X 36" DRAWINGS:

AD1/A-102 Partial First & Second Floor Plan

AD1/A-901 Room Finish Plans

AD1/A-902 Room Finish Plans, Schedules and Details

REVISIONS TO THE CONTRACT DRAWINGS:

- A. Refer to Drawing A-102 *Partial First & Second Floor Plan*; **ADD** the attached Drawing AD1/A-102 *Partial First & Second Floor Plan*. **CLARIFICATION**: This drawing was omitted from the original bid set. Insert drawing.
- B. Refer to Drawing A-901 *Room Finish Plans*; **ADD** the attached Drawing AD1/A-901 *Room Finish Plans*. **CLARIFICATION**: This drawing was omitted from the original bid set. Insert drawing.
- C. Refer to Drawing A-902 *Room Finish Plans, Schedules and Details*; **ADD** the attached Drawing AD1/A-901 *Room Finish Plans, Schedules and Details*. **CLARIFICATION**: This drawing was omitted from the original bid set. Insert drawing.

END OF ADDENDUM

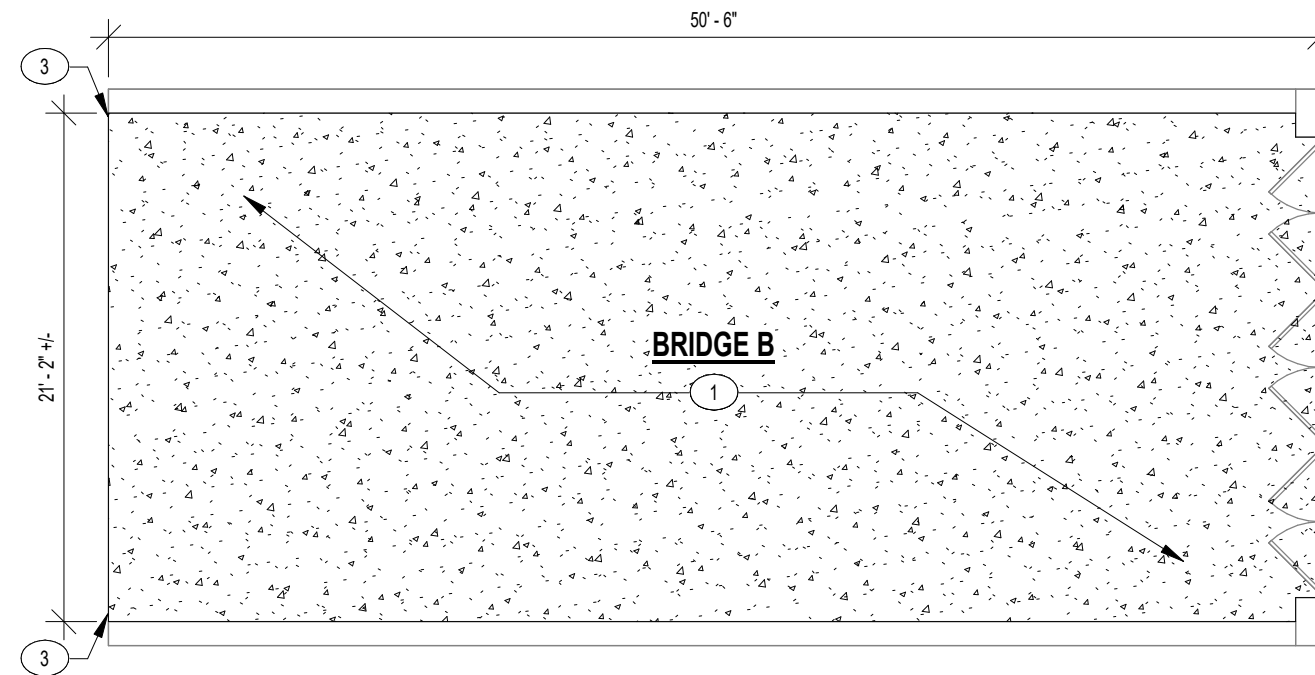
Please do not hesitate to contact me with any questions on this addendum, thank you.

Respectfully Submitted,

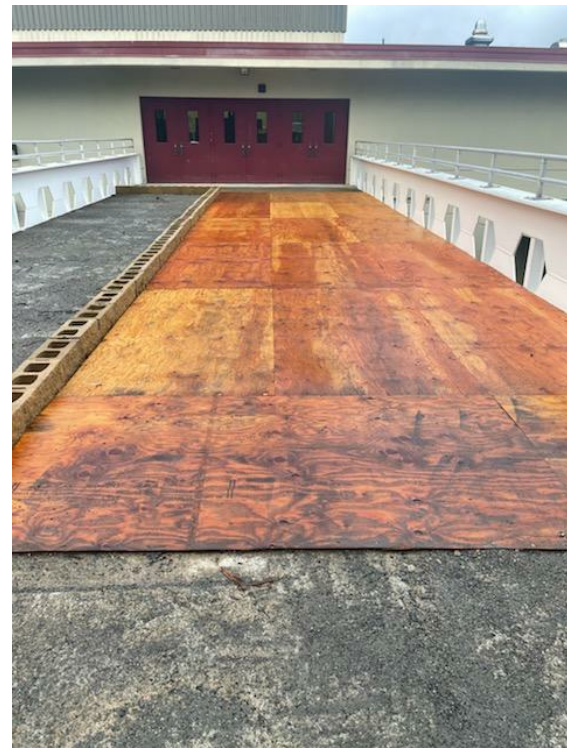
BCA ARCHITECTS & ENGINEERS

John Sokol, RA

Principal

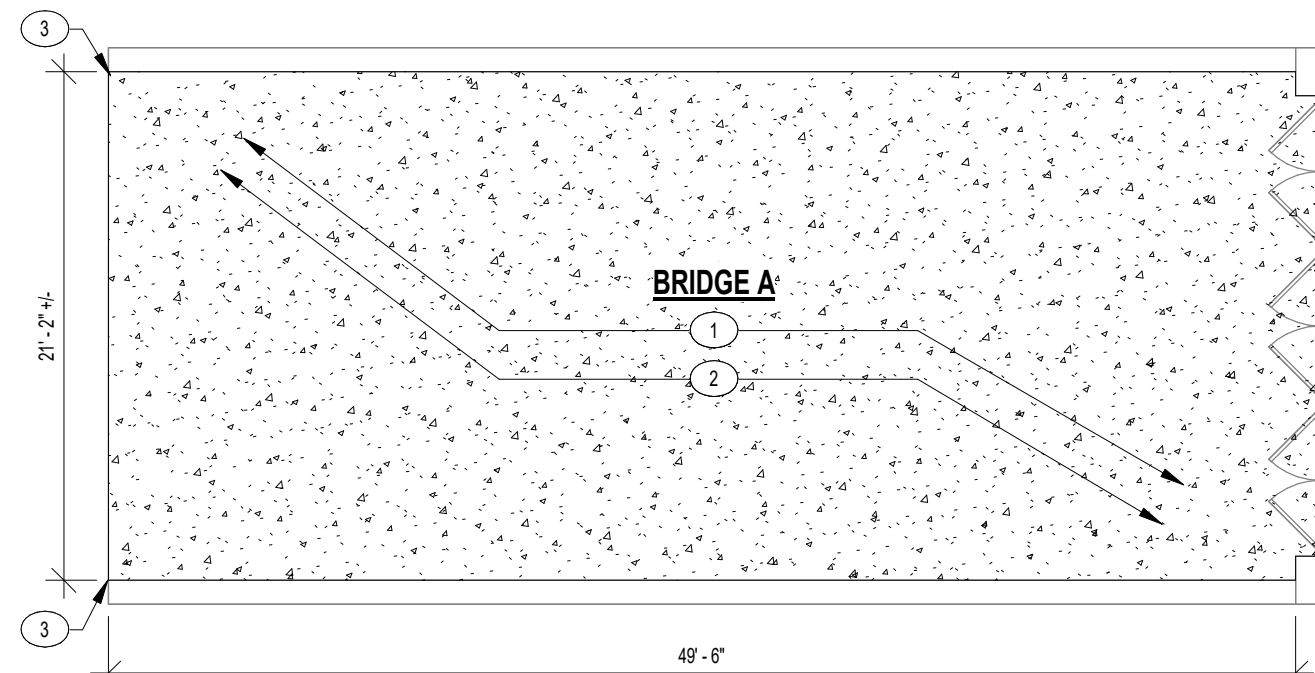


BRIDGE B



BRIDGE A

BRIDGE DECK REPAIR REFERENCE PHOTOS
SCALE: 1 1/2" = 1'-0"



3 PARTIAL FLOOR PLAN - BRIDGE DECK REPAIR
SCALE: 1/8" = 1'-0"



APPROXIMATE EXTENTS OF ASPHALT REMOVAL TYPICAL OF BOTH BRIDGES

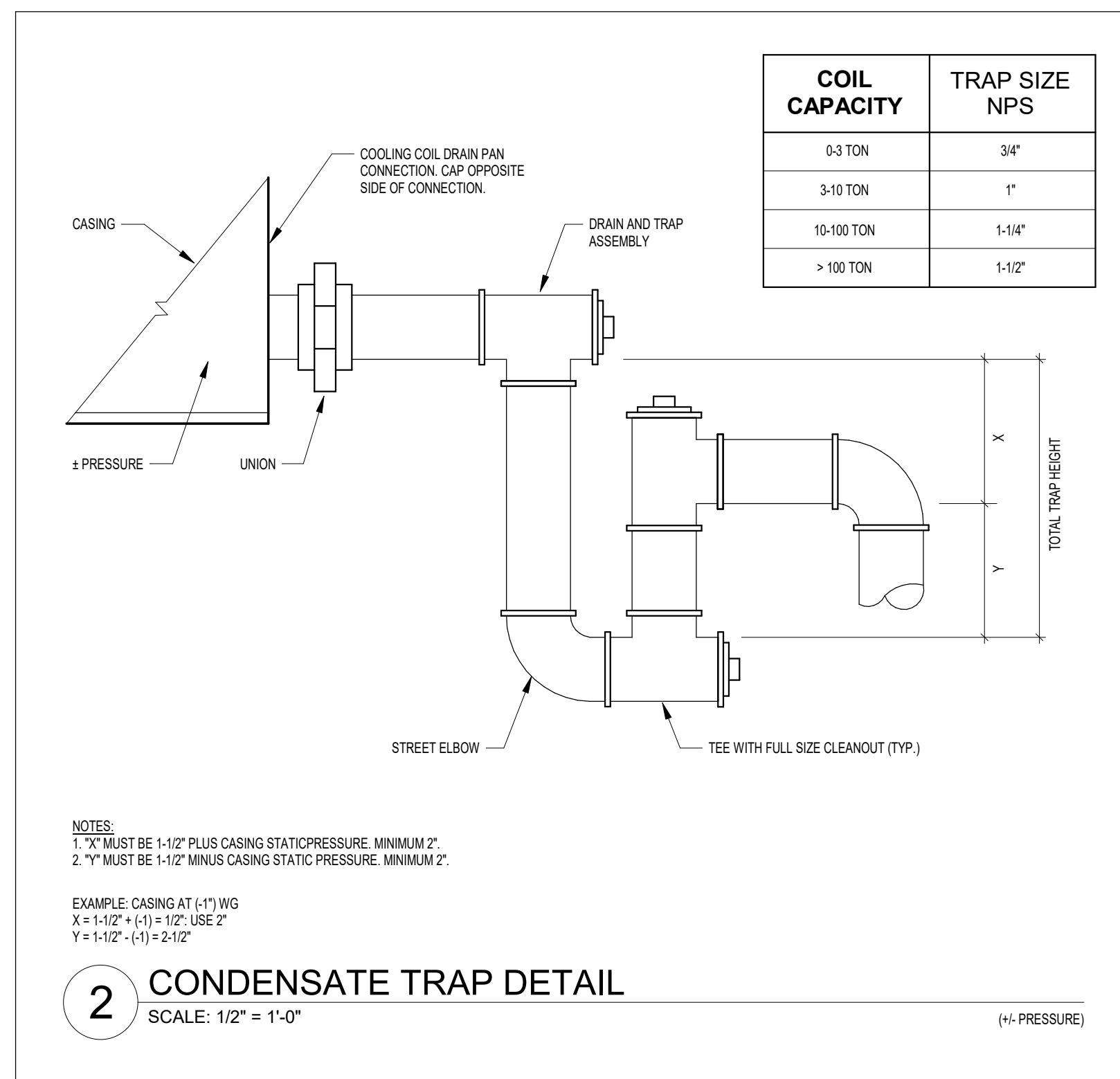
1 FIRST FLOOR PLAN - AREA B
SCALE: 1/8" = 1'-0"

BRIDGE DECK REPAIR NOTES

- PREPARE A STRIP ALONG THE INTERFACE BETWEEN THE CONCRETE DECK AND THE FOUR BRIDGE GIRDERS.
 - THE STRIP IS TO BE 5" HIGH AND THE LENGTH OF THE GIRDER = 50'-0".
 - THE STRIP IS TO BE PREPARED TO SOCIETY FOR PROTECTIVE COATINGS (SSPC) SP-10 STANDARDS.
 - THE STRIP IS TO BE PAINTED WITH A THREE COAT SYSTEM SUITABLE FOR EXTERIOR STEEL STRUCTURES.
 - BASE COAT: AN INORGANIC ZINC RICH PRIMER.
 - MID COAT: AN EPOXY MID COAT.
 - TOP COAT: A URETHANE TOP COAT.
- PREPARE THE EXISTING CONCRETE DECK.
 - POWER WASH THE TOP OF THE DECK TO REMOVE ALL LOOSE MATERIAL.
 - OUT AND REMOVE ALL PROTRUDING STEEL REINFORCING BARS.
 - NEW SLAB REINFORCEMENT: #3 BARS @ 6" O.C. EACH DIRECTION. BARS SHALL BE SUPPORTED A MINIMUM OF 2-1/2" ABOVE EXISTING SLAB.
- COAT THE CLEANED CONCRETE DECK WITH A BONDING AGENT SUCH AS SKALQUID WELD OR EQUAL. FOLLOW MANUFACTURERS INSTRUCTIONS.
- INSTALL A CONCRETE TOPPING.
 - CONCRETE TOPPING SHALL BE 5" THICK +/- AND IS TO BE FIELD VERIFIED TO MATCH TOP OF EXISTING BUILDING ENTRANCE SLAB.
 - CONCRETE REQUIREMENTS:
 - CONCRETE 28 DAY COMPRESSIVE STRENGTH TO BE 5,000 PSI.
 - COARSE AGGREGATE TO BE WASHOT 1A.
 - MAXIMUM WATER CEMENT RATIO TO EQUAL 0.45.
 - MAXIMUM SLUMP TO BE 4".
 - MINIMUM AIR ENTRAINMENT TO BE 6%.
 - CONCRETE TO BE REINFORCED WITH FORTA FERRO 2-1/4" FIBRILLATED POLYPROPYLENE FIBERS OR EQUAL AT A DOSAGE OF 7.5 POUNDS PER CUBIC YARD OF CONCRETE.
 - PROVIDE A CROWNED SURFACE AT FINISH TOP OF CONCRETE AND SLOPE TOWARDS EACH BRIDGE RAIL. CONCRETE TO HAVE A BROOM FINISH ORIENTED PERPENDICULAR TO THE STEEL BRIDGE GIRDERS.
 - CONCRETE TOPPING SHALL BE CURED FOR A MINIMUM OF 14 DAYS IN ACCORDANCE WITH ACI 308R-16 GUIDE TO EXTERNAL CURING OF CONCRETE. IMMEDIATELY AFTER PLACEMENT, PROTECT CONCRETE FROM PREMATURE DRYING, EXCESSIVE HOT OR COLD TEMPERATURE, AND MECHANICAL INJURY. MAINTAIN CONCRETE WITH MINIMAL MOISTURE LOSS AND AT RELATIVELY CONSTANT TEMPERATURE BY USE OF SATURATED BURLAP OR MOISTURE-RETAINING SHEET LAPPED NOT LESS THAN 3" AND SEALED WITH WATERPROOF TAPE.

BRIDGE DECK REPAIR KEYNOTE LEGEND

- PREPARE BRIDGE DECK TO RECEIVE NEW CONCRETE TOPPING. SEE BRIDGE DECK REPAIR NOTES FOR MORE INFORMATION.
- CONTRACTOR TO REMOVE EXISTING BLOCK, WOOD SLEEPERS AND PLYWOOD WALKING SURFACE AT THIS BRIDGE ONLY. REFER TO OWNER FOR SALVAGE OF MATERIALS PRIOR TO DISPOSAL. ALL MATERIALS ARE TO BE DISPOSED OF IN A SAFE AND LEGAL MANNER IF APPLICABLE.
- CONTRACTOR IS TO REMOVE EXISTING ASPHALT AT WALKWAY/BRIDGE INTERSECTION TO ACCOMMODATE NEW CONCRETE SURFACE. FINISHED SURFACE ELEVATIONS NEED TO BE IDENTICAL ONCE COMPLETED.



SPECS

COOLING CONDENSATE REMOVAL PUMPS

- MANUFACTURERS:
 - LITTLE GIANT; MODEL VOAM-20UL
 - SUBSTITUTIONS: SEE SECTION 01 6000 - PRODUCT REQUIREMENTS
- CONSTRUCTION: COMMERCIAL GRADE, NONFERROUS PUMP WITH STAINLESS STEEL SHAFT, INTEGRAL DISCHARGE CHECK VALVE, INTEGRAL FLOAT SWITCH, SAFETY SWITCH, THERMOPLASTIC RESERVOIR, MOTOR ASSEMBLY, AND POWER CORD WITH GROUND. PROVIDE WITH WALL MOUNT BRACKET.
- UL 778
- PERFORMANCE:
 - FLOW 60 GPH. AT 10 FEET HEAD.
 - ELECTRICAL CHARACTERISTICS:
 - 130 HP
 - 120 VOLTS, SINGLE PHASE, 60 HZ, 1.5 FLA

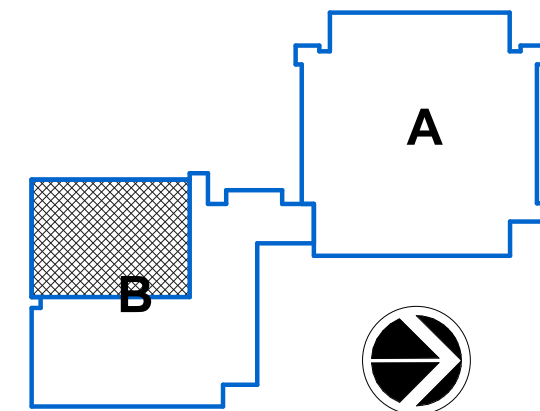
SANITARY SEWER PIPING, ABOVE GRADE

- PVC PIPE: ASTM D2729
- FITTINGS: PVC
- JOINTS: SOLVENT WELDED, WITH ASTM D2564 SOLVENT CEMENT.

PIPE HANGERS AND SUPPORTS

- ALL PLUMBING PIPING SHALL BE SUPPORTED IN ACCORDANCE WITH THE PLUMBING CODE OF NEW YORK STATE. HANGERS, ANCHORS, AND SUPPORTS SHALL SUPPORT THE PIPING AND THE CONTENTS OF THE PIPING. HANGERS AND STRAPPING SHALL BE OF APPROVED MATERIAL THAT WILL NOT PROMOTE GALVANIC ACTION.
- PLUMBING PIPING - DRAIN, WASTE AND VENT:
 - CONFORM TO ASME B31.9
 - HANGERS FOR PIPE SIZES 1/2 TO 1-1/2 INCHES: MALLEABLE IRON, ADJUSTABLE SWIVEL, SPLIT RING
 - MULTIPLE OR TRAPEZE HANGERS: STEEL CHANNELS WITH WELDED SPACERS AND HANGER RODS
 - VERTICAL SUPPORTS: STEEL RISER CLAMP
 - FLOOR SUPPORT: CAST IRON ADJUSTABLE PIPE SADDLE, LOCK NUT, NIPPLE, FLOOR FLANGE, AND CONCRETE PIER OR STEEL SUPPORT.

KEY PLAN:



SED CONTROL NO. 44-09-01-04-0-008-017

COPYRIGHT © 2021 - BCA ARCHITECTS & ENGINEERS. WARNING - IT IS A VIOLATION OF THE NEW YORK STATE ENGINEERING LAW FOR ANY UNAUTHORIZED ALTERATIONS TO THIS DOCUMENT AS PER ARTICLE 145 AND 147.

BCA Architects & Engineers
Ithaca | Saratoga Springs | Watertown
WWW.THEBCAGROUP.COM

BCA
ARCHITECTS
ENGINEERS



JAMES I. O'NEILL RENOVATION PROJECT
HIGHLAND FALLS - FORT MONTGOMERY CSD
JAMES I. O'NEILL HIGH SCHOOL
HIGHLAND FALLS - ORANGE COUNTY - STATE OF NEW YORK

REV	DATE	DESCRIPTION

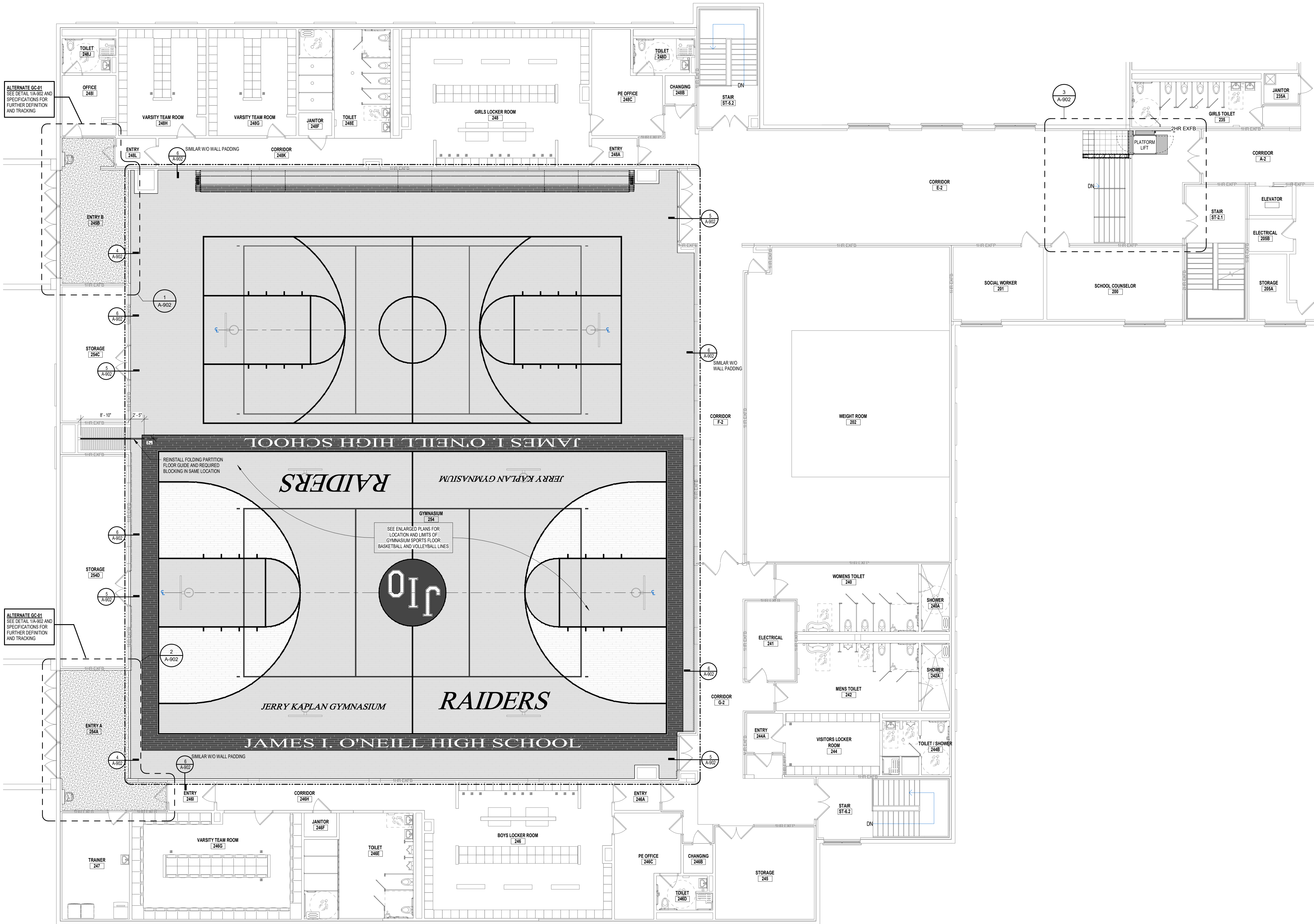
DRAWN BY NFB	PROJECT NUMBER 2020-117
CHECKED BY JAS	DATE REBID 09.10.2021

PARTIAL FIRST & SECOND FLOOR
PLAN - AREA B

SHEET NUMBER

A-102
AD1

9/17/2021 8:56:48 AM



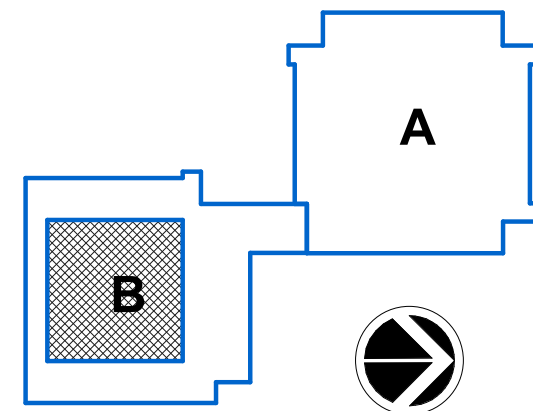
GENERAL FLOORING NOTES

- A. ALL EXISTING AND NEW FLOOR PENETRATIONS ARE TO BE GROUND SMOOTH WITH ADJACENT SURFACE AND IMPERFECTIONS ARE TO BE REMOVED PRIOR TO INSTALLATION OF NEW FLOORING.
- B. IN AREAS WHERE NEW FLOORING IS TO BE INSTALLED, ALL EXISTING FLOORING IS TO BE REMOVED DOWN TO CONCRETE SUBFLOOR, SCARIFY EXISTING SLAB AND FLASH PATCH WITH A SELF LEVELER, TO PRODUCE A SMOOTH SURFACE FREE OF IMPERFECTIONS PRIOR TO THE INSTALLATION OF NEW FLOORING.
- C. IN ALL AREAS WHERE EXISTING WALL WAS REMOVED CARE SHALL BE TAKEN TO REMOVE ALL COMPONENTS INCLUDING MORTAR, REINFORCEMENT BARS OR OTHER COMPONENTS AND CUT THEM FLUSH WITH THE REMAINING SLAB. GRIND SMOOTH TO PRODUCE A SMOOTH SURFACE FREE OF IMPERFECTIONS PRIOR TO THE INSTALLATION OF NEW FLOORING.
- D. UNLESS OTHERWISE NOTED ON PLANS ALL FLOORING IS TO BE CENTERED IN ROOM, ALIGN EDGE OF WHOLE TILES OR PLANKS WITH WALL WHERE POSSIBLE TO LIMIT CUT TILES.
- E. WHERE NEW FLOORING IS INSTALLED ADJACENT TO EXISTING FLOORING, ALIGN JOINTS WITH EXISTING JOINTS AND PROVIDE TRANSITION AS REQUIRED.
- F. ALL FLOORING TRANSITIONS ARE TO BE SMOOTH AND LEVEL BETWEEN DIFFERENT MATERIALS AND FLOORING SURFACES.
- G. INSTALL SOLID BLOCKING WITHIN WOOD FLOORING SYSTEM AT DOORWAYS, UNDER STACKED BLEACHERS, UNDER LOCATIONS OF HEAVY LOADS AND IN ACCORDANCE TO MANUFACTURER'S RECOMMENDATIONS. COORDINATE BLEACHER ROLLING WHEEL LOADS AND WOOD FLOORING SYSTEM BLOCKING NEEDED WITH BLEACHER MANUFACTURER.

FLOOR FINISH LEGEND

- VCT 1 - VINYL COMPOSITION TILE
- VCT 2 - VINYL COMPOSITION TILE
- WD 1 - WOOD GYMNASIUM SPORTS FLOORING
- SSV 1 - SEAMLESS SHEET VINYL
- EP 1 - EPOXY FLOORING

KEY PLAN:



SED CONTROL NO. 44-09-01-04-0-008-017

COPYRIGHT © 2021 - BCA ARCHITECTS & ENGINEERS. WARNING - IT IS A VIOLATION OF THE NEW YORK STATE EDUCATION LAW FOR ANY UNAUTHORIZED ALTERATIONS TO THIS DOCUMENT AS PER ARTICLE 145 AND 147.

BCA Architects & Engineers
Ithaca | Saratoga Springs | Watertown
WWW.THEBCGROUP.COM

BCA
ARCHITECTS
ENGINEERS



JAMES I. O'NEILL RENOVATION PROJECT
HIGHLAND FALLS - FORT MONTGOMERY CSD
JAMES I. O'NEILL HIGH SCHOOL
HIGHLAND FALLS - ORANGE COUNTY - STATE OF NEW YORK

REV	DATE	DESCRIPTION

DRAWN BY NPB	PROJECT NUMBER 2020-117
CHECKED BY JAS	DATE REBID 09.10.2021

ROOM FINISH PLANS

SHEET NUMBER

A-901
AD1

ROOM FINISH SCHEDULE																
ROOM		FLOOR			WALL								CEILING			REMARKS
NUMBER	NAME	MATERIAL	FINISH	BASE	NORTH	SOUTH	EAST	WEST					MATERIAL	FINISH	CEILING HEIGHT	
123	AUDITORIUM	ETR			ETR / CMU	--	ETR	--	ETR	--	PT-2	MFR	VF	3.4		
246B	ENTRY B	EP-1	MFR	B-2	ETR / CMU	--	ETR / CMU	--	ETR / CMU	--	ETR	--	ETR	--	--	
254	GYMNASIUM	WD-1	MFR	B-1	ETR / CMU	--	ETR / CMU	--	ETR / CMU	--	ETR / CMU	--	ETR	--	--	
254A	ENTRY A	EP-1	MFR	B-2	ETR / CMU	--	ETR / CMU	--	ETR / CMU	--	ETR / CMU	--	ETR	--	--	
E-2	CORRIDOR	VCT-1 / VCT-2 / SSV-1	MFR	B-2	ETR / CMU	--	ETR / CMU	--	PRT-1	MFR	ETR / CMU	--	ETR	--	1.2	

ROOM FINISH REMARKS

- NEW LIFT HALF WALL TO HAVE PRT-1 APPLIED ON (A) SIDES.
- EXISTING WEST WALL TO BE PREPARED AND PAINTED PT-1 TO MATCH EXISTING WALL COLOR. SEE PLAN FOR LOCATION AND LIMITS.
- FINISH IS OVER NEW AND EXISTING BEAM FIREPROOFING AND TO BE COMPATIBLE WITH BOTH PRODUCTS. WATER-BASED, NON-BRIDGING PAINT.
- COLOR TO MATCH EXISTING BEAM FINISH.

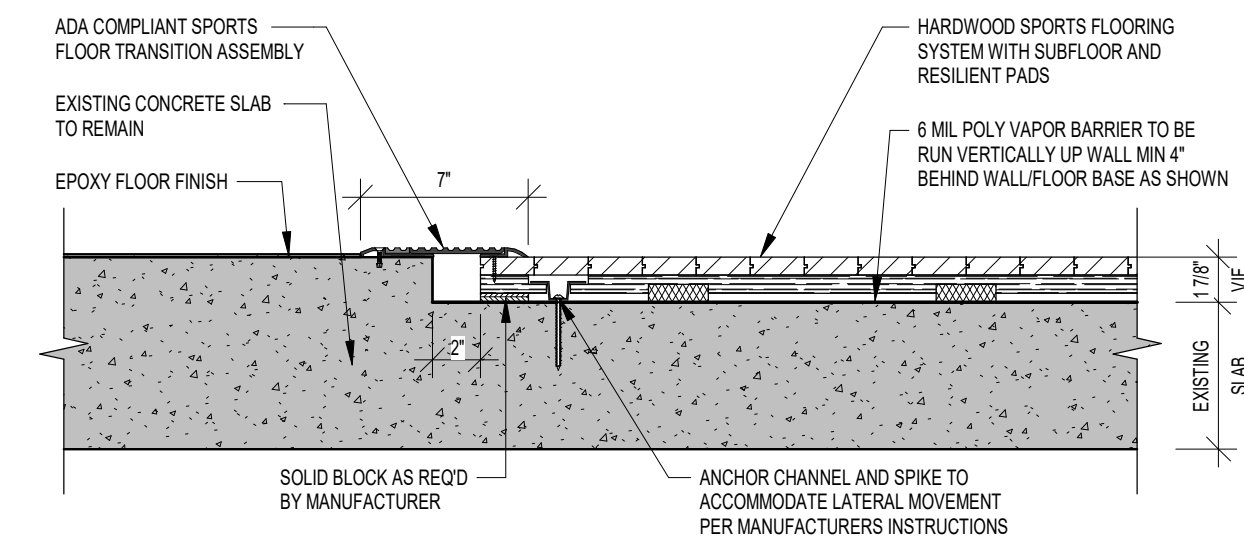
FINISH KEY

LOCATION	TYPE	MANUFACTURE	PRODUCT NAME	PRODUCT NUMBER	COLOR	NOTES
CEILING FINISHES	PT-2	CEILING PAINT	SHERWIN - WILLIAMS	PRO - MAR 200	B2BW2600	MATCH EXISTING
WALL FINISHES	PT-1	WALL PAINT	SHERWIN - WILLIAMS	PRO - MAR 200 HP	B2BW2600	MATCH EXISTING
	PRT-1	PORCELAIN WALL TILE	CROSSVILLE	ALASKA	ASK04	GLACIER
FLOOR FINISHES	WD-1	WOOD GYMNASIUM SPORTS FLOORING	ROBBINS SPORTS FLOORING	ECLIPSE - SB	--	TBD
	VCT-1	VINYL COMPOSITION TILE	ARMSTRONG	STANDARD OR PREMIUM EXCELO	TBD	TBD
	VCT-2	VINYL COMPOSITION TILE	ARMSTRONG	STANDARD OR PREMIUM EXCELO	TBD	TBD
	SSV-1	SEAMLESS SHEET VINYL	TARKETT	IQ - GRANIT - MICRO	TBD	TBD
	EP-1	EPOXY FLOORING	STONHARD	STONCRETE EFX	SEE SPEC	TBD
BASE FINISHES	B-1	VENTED COVE BASE FOR GYMNASIUM	TARKETT	RESILIENT VENTED COVE WALL BASE	VCO	40 - BLACK 47 - BROWN
	B-2	COVE BASE	TARKETT	TYPE TS RUBBER	--	TBD

- FINISH KEY NOTES
- PROVIDE TARKETT SLIMLINE TRANSITION BETWEEN SSV AND VCT-1. PROFILE AND COLOR TBD.
 - SEE SPECIFICATIONS FOR COMPLETE EPOXY FLOORING SYSTEM REQUIREMENTS.

3 STAIR LIFT FINISH FLOOR PLAN

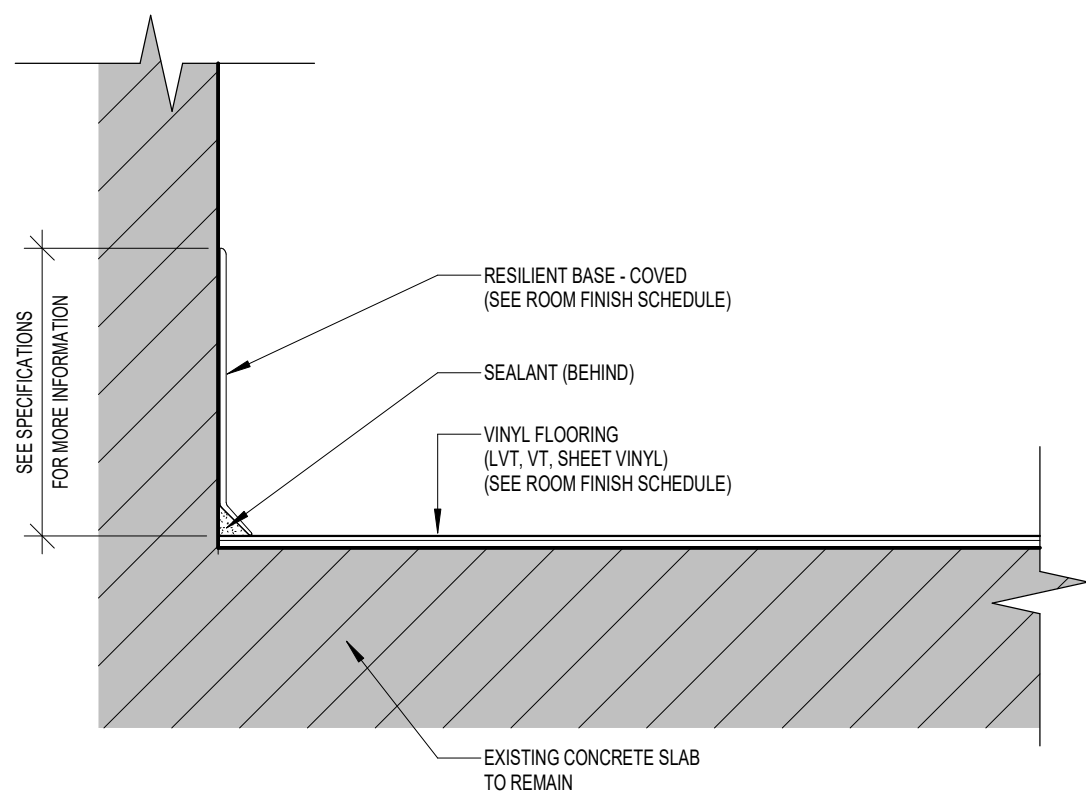
SCALE: 1/4" = 1'-0"



4 GYM FLOOR TRANSITION DETAIL

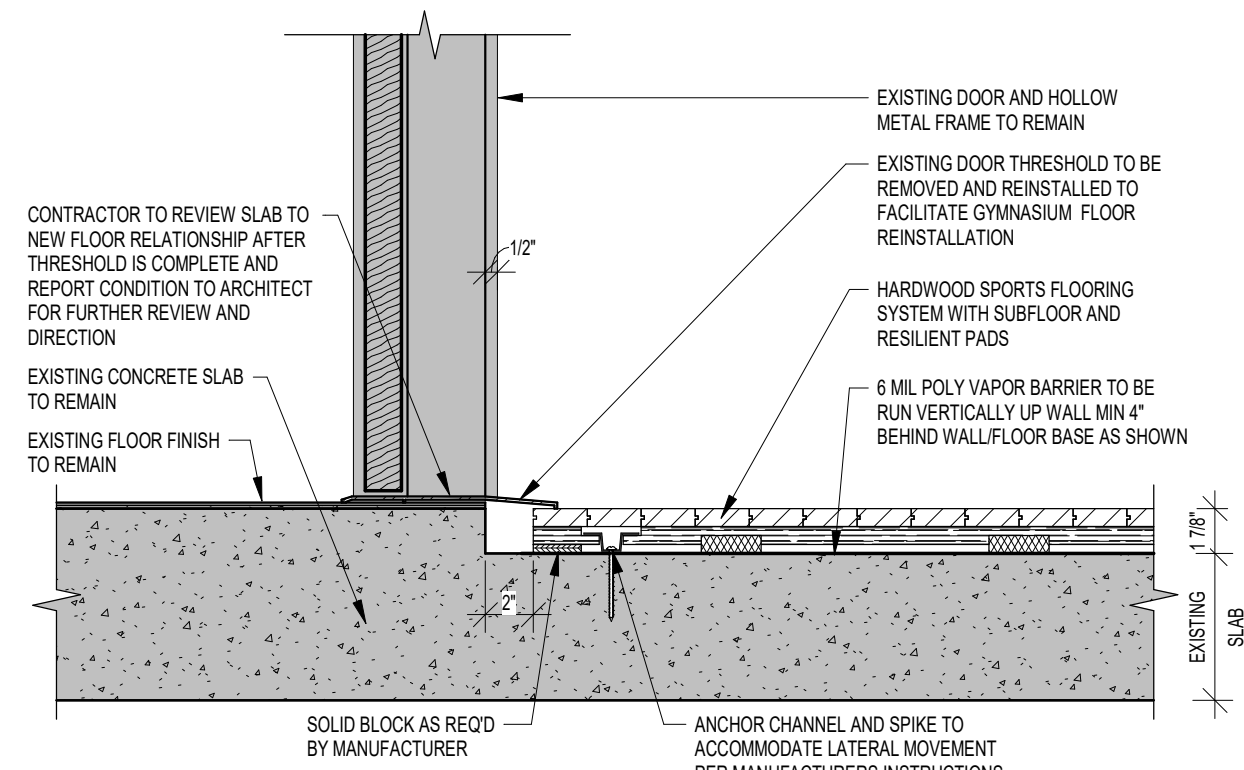
SCALE: 1 1/2" = 1'-0"

ALTERNATE GC-06



7 TYPICAL RESILIENT BASE DETAIL

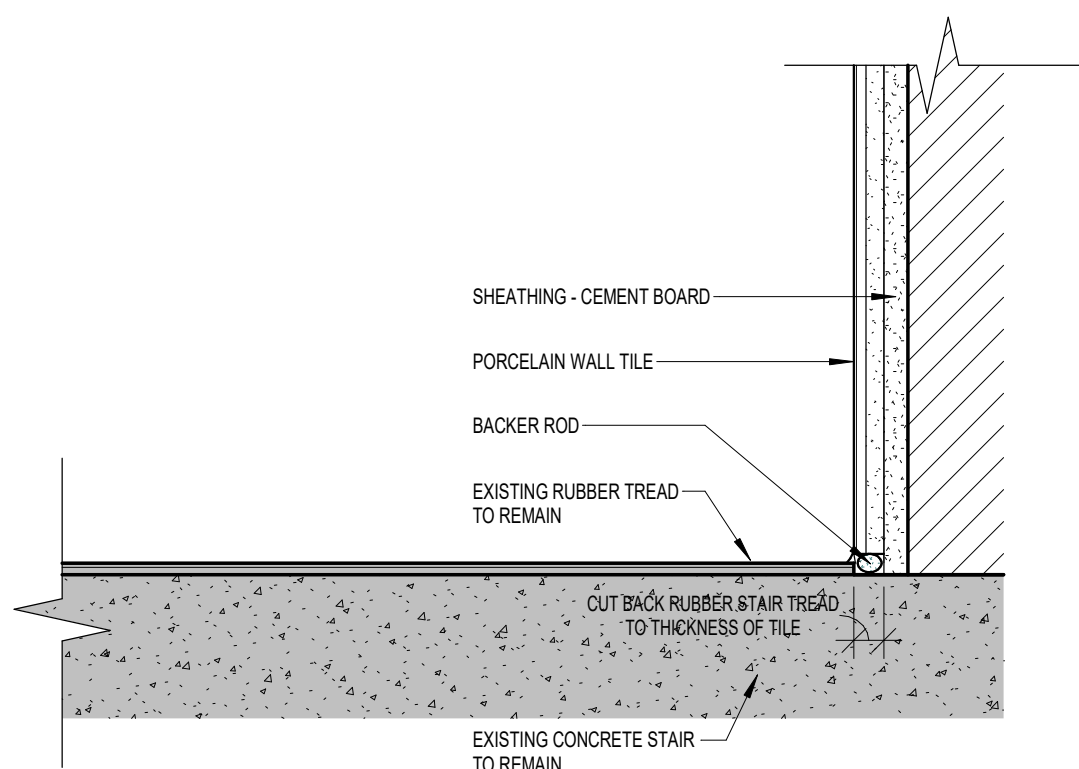
SCALE: 3" = 1'-0"



5 GYM FLOOR DOOR THRESHOLD DETAIL

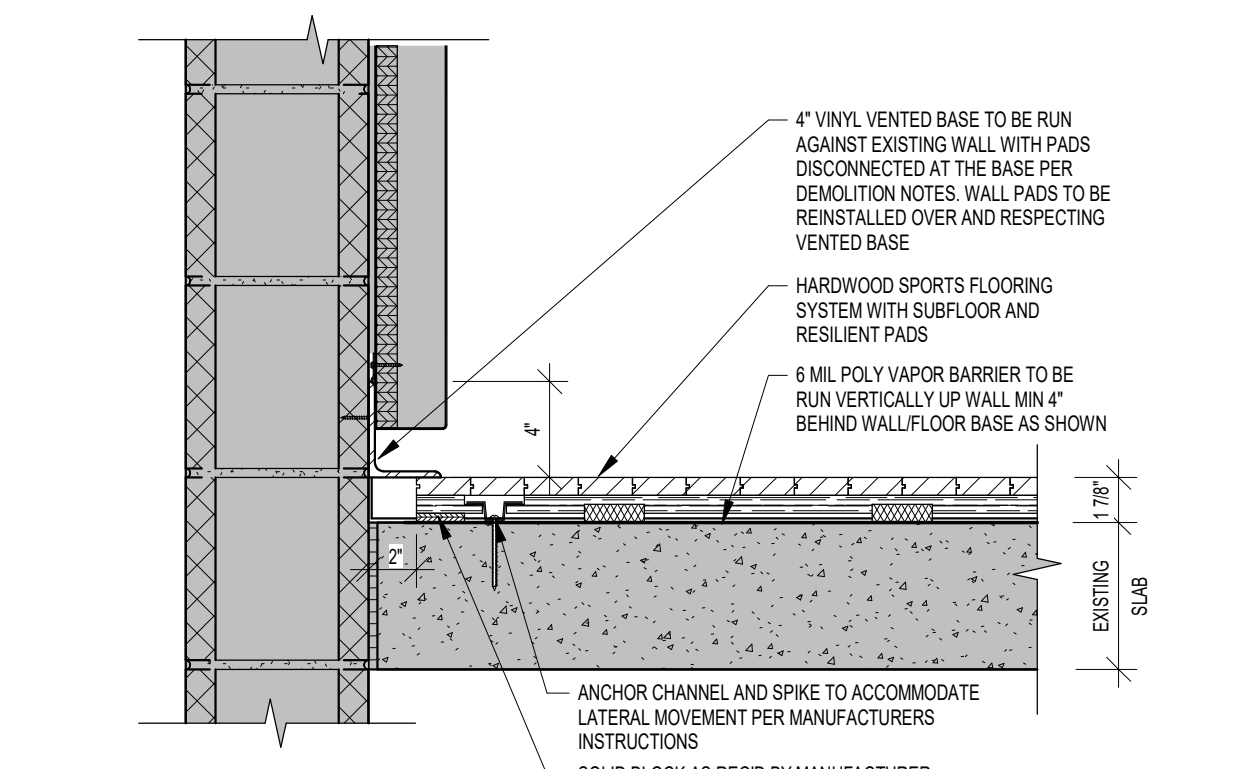
SCALE: 1 1/2" = 1'-0"

ALTERNATE GC-06



8 FLOORING DETAIL AT WALL TILE

SCALE: 3" = 1'-0"



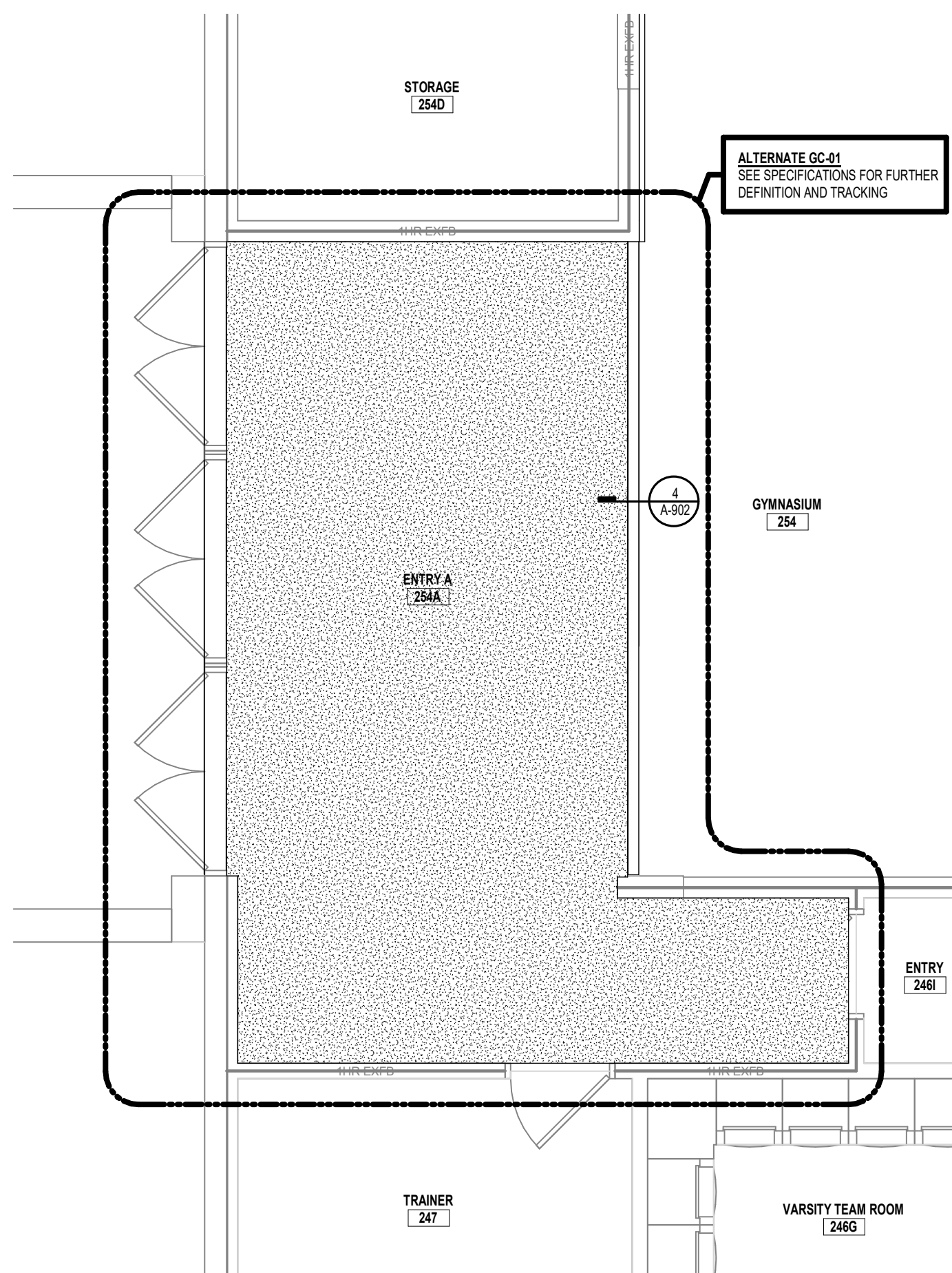
6 GYM FLOOR EDGE DETAIL

SCALE: 1 1/2" = 1'-0"

ALTERNATE GC-06

1 SECOND FLOOR PLAN - AREA B

SCALE: 1/4" = 1'-0"



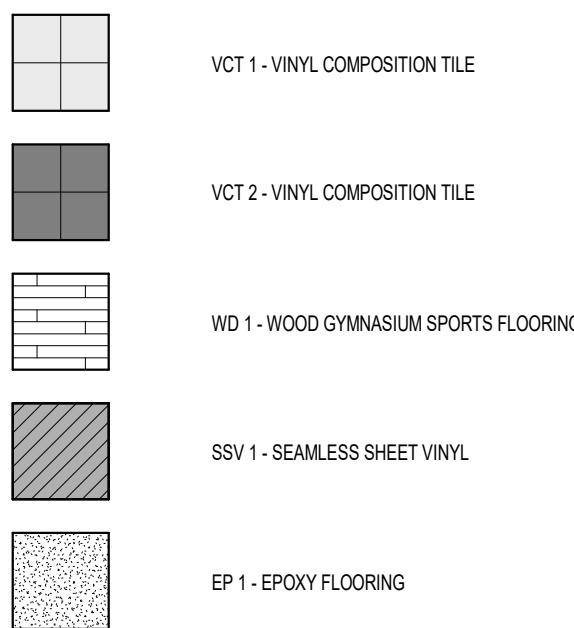
2 SECOND FLOOR PLAN - AREA B

SCALE: 1/4" = 1'-0"

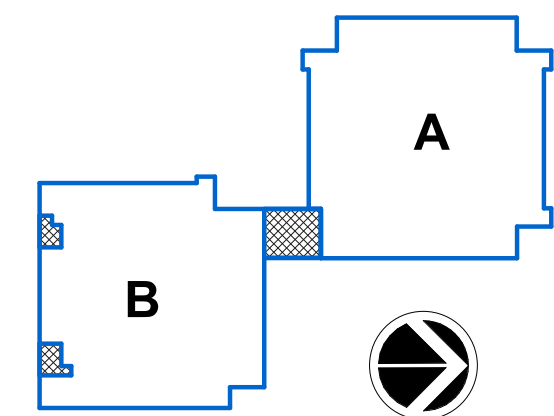
GENERAL FLOORING NOTES

- ALL EXISTING AND NEW FLOOR PENETRATIONS ARE TO BE GROUND SMOOTH WITH ADJACENT SURFACE AND IMPERFECTIONS ARE TO BE REMOVED PRIOR TO INSTALLATION OF NEW FLOORING.
- IN AREAS WHERE NEW FLOORING IS TO BE INSTALLED, ALL EXISTING FLOORING IS TO BE REMOVED DOWN TO CONCRETE SUBFLOOR. SCARIFY EXISTING SLAB AND FLASH PATCH WITH A SELF-LEVELER, TO PRODUCE A SMOOTH SURFACE FREE OF IMPERFECTIONS PRIOR TO THE INSTALLATION OF NEW FLOORING.
- IN ALL AREAS WHERE EXISTING WALL WAS REMOVED CARE SHALL BE TAKEN TO REMOVE ALL COMPONENTS INCLUDING MORTAR, REINFORCEMENT BARS OR OTHER COMPONENTS AND CUT THEM FLUSH WITH THE REMAINING SLAB. GRIND SMOOTH TO PRODUCE A SMOOTH SURFACE FREE OF IMPERFECTIONS PRIOR TO THE INSTALLATION OF NEW FLOORING.
- UNLESS OTHERWISE NOTED ON PLANS ALL FLOORING IS TO BE CENTERED IN ROOM. ALIGN EDGE OF WHOLE TILES OR PLANKS WITH WALL WHERE POSSIBLE TO LIMIT CUT TILES.
- WHERE NEW FLOORING IS INSTALLED ADJACENT TO EXISTING FLOORING, ALIGN JOINTS WITH EXISTING JOINTS AND PROVIDE TRANSITION AS REQUIRED.
- ALL FLOORING TRANSITIONS ARE TO BE SMOOTH AND LEVEL BETWEEN DIFFERENT MATERIALS AND FLOORING SURFACES.
- INSTALL SOLID BLOCKING WITHIN WOOD FLOORING SYSTEM AT DOORWAYS, UNDER STACKED BLEACHERS, UNDER LOCATIONS OF HEAVY LOADS AND IN ACCORDANCE TO MANUFACTURERS RECOMMENDATIONS. COORDINATE BLEACHER ROLLING WHEEL LOADS AND WOOD FLOORING SYSTEM BLOCKING NEEDED WITH BLEACHER MANUFACTURER.

FLOOR FINISH LEGEND



KEY PLAN:



SED CONTROL NO. 44-09-01-04-0-008-017

COPYRIGHT © 2021 - BCA ARCHITECTS & ENGINEERS. WARNING - IT IS A VIOLATION OF THE NEW YORK STATE EDUCATION LAW FOR ANY UNAUTHORIZED ALTERATIONS TO THIS DOCUMENT AS PER ARTICLE 145 AND 147.

BCA Architects & Engineers
Ithaca | Saratoga Springs | Watertown
WWW.THEBCAGROUP.COM



JAMES I. O'NEILL RENOVATION PROJECT
HIGHLAND FALLS - FORT MONTGOMERY CSD
JAMES I. O'NEILL HIGH SCHOOL
HIGHLAND FALLS - ORANGE COUNTY - STATE OF NEW YORK

REV	DATE	DESCRIPTION

DRAWN BY NFB	PROJECT NUMBER 2020-117
CHECKED BY JAS	DATE REBID 09.10.2021

ROOM FINISH PLANS, SCHEDULES
AND DETAILS

SHEET NUMBER

A-902
AD1