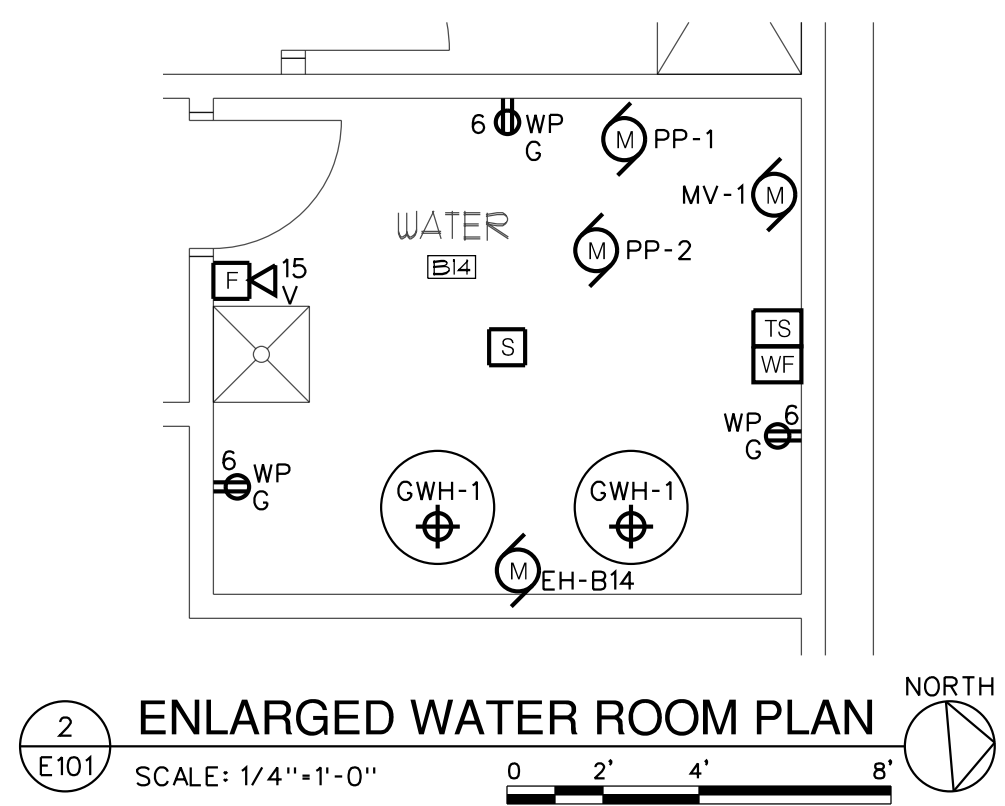



1
E101
BASEMENT FLOOR PLAN
SCALE: 1/8"=1'-0"

- GENERAL NOTES:**
- A. UNLESS OTHERWISE NOTED, ALL BRANCH CIRCUIT WIRING SHALL BE (2)•12 WITH (1)•12G, TYPE MC CABLE.
 - B. COORDINATE SINGLE POINT OF CONNECTION (FOR DATA, PHONE, AND CABLE TV) WITH SERVICE PROVIDER. PROVIDE CABLING AND OUTLET PER SERVICE PROVIDER'S INSTRUCTIONS.
 - C. REFER TO ONE-LINE DIAGRAM, SCHEDULES AND DETAILS FOR ADDITIONAL INFORMATION AND REQUIREMENTS.
 - D. REFER TO ENLARGED PLANS FOR TYPICAL DEVICE LAYOUT AND ADDITIONAL REQUIREMENTS.
 - E. ELECTRICAL CONTRACTOR TO PROVIDE DATA CABLES BACK TO ELECTRICAL RM IN BASEMENT. DATA RACKS BY OTHERS.
 - F. ALL EQUIPMENT AND DEVICES SHALL BE CIRCUITED TO PANEL 'PB-1', UNLESS OTHERWISE NOTED.
- DRAWING NOTES:**
- 1 PROVIDE DEDICATED RECEPTACLE AND BRANCH CIRCUIT FOR EXERCISE EQUIPMENT.



2
E101
ENLARGED WATER ROOM PLAN
SCALE: 1/4"=1'-0"

 ME ENGINEERING Mechanical/Electrical Engineering Consultants NY Reg. # 20005 Schenectady County, NY 12305-1217 www.meengr.com	
DATE: 9/18/2020 REVISION: 10/23/2020 ADDENDUM 1	
PROJECT NO. 200095 DESIGNED BY: CUE DRAWN BY: CUE CHECKED BY: RSA SCALE: AS NOTED NOTES:	
BASEMENT ELECTRICAL POWER PLAN	
HARRIS A. SANDERS ARCHITECTS, P.C. 252 WASHINGTON AVENUE, ALBANY, NEW YORK 12210	
L'DOR ADULT CARE FACILITY 156 WEST CLARKSTOWN ROAD NEW CITY, N.Y. 10956	
SHEET NO. E101	