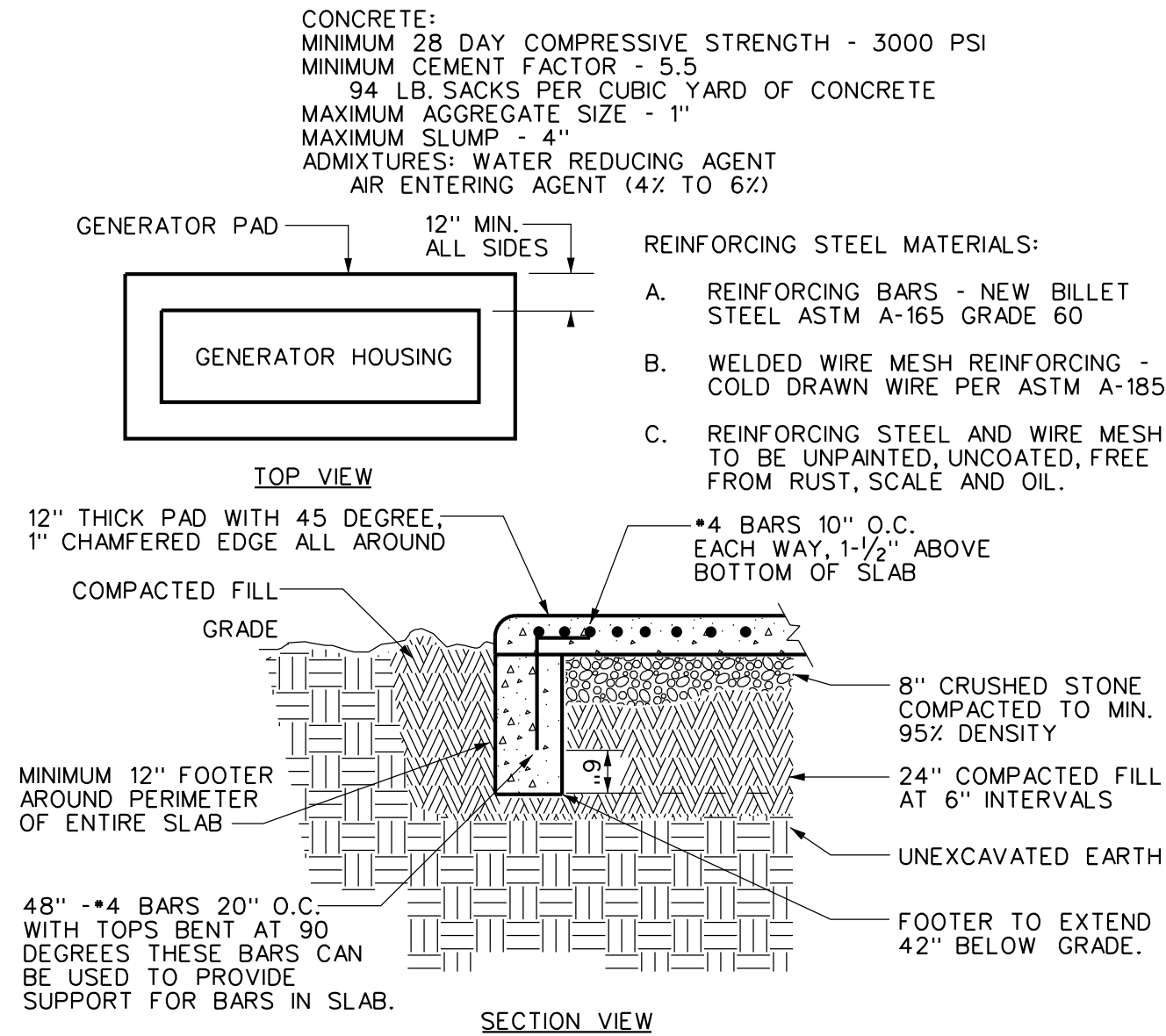


#### DETAIL SPECIFIC NOTES:

- ① 24" x 24" x 24" PRECAST POLYMER CONCRETE STACKABLE ENCLOSURE, OPEN BOTTOM.
- ② 24" x 24" x 14" STACKABLE EXTENSION, OPEN BOTTOM.
- ③ BOLTED COVER.
- ④ 6" OF #2 CRUSHED STONE BELOW HANDHOLE. EXTEND MINIMUM OF 6" AROUND OUTSIDE EDGE.
- ⑤ SLOPE FINISHED GRADE AWAY FROM COVER.

#### 1 HANDHOLE DETAIL E602

SCALE: NONE

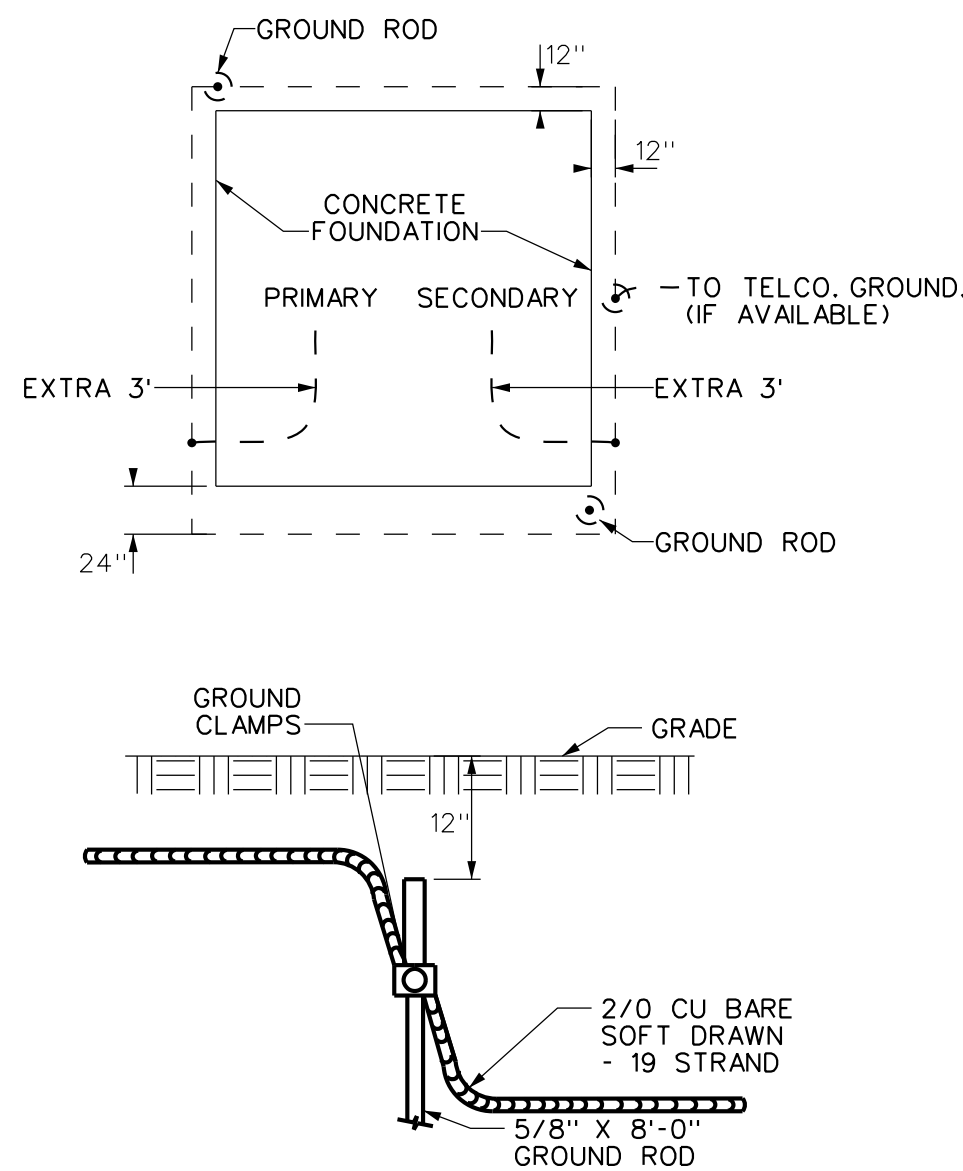


#### DETAIL NOTES:

- A. TOP OF NEW PADS SHALL BE 4" ABOVE EXISTING GRADE LEVEL.
- B. TOP SURFACE SHALL BE TROWL FINISHED.
- C. PROVIDE ANCHOR BOLTS AS PER GENERATOR MANUFACTURERS REQUIREMENTS.
- D. READ THE SPECIFICATIONS AND REFER TO THE CONDUIT PLAN.

#### 2 REINFORCED CONCRETE GENERATOR PAD DETAIL E602

SCALE: NONE

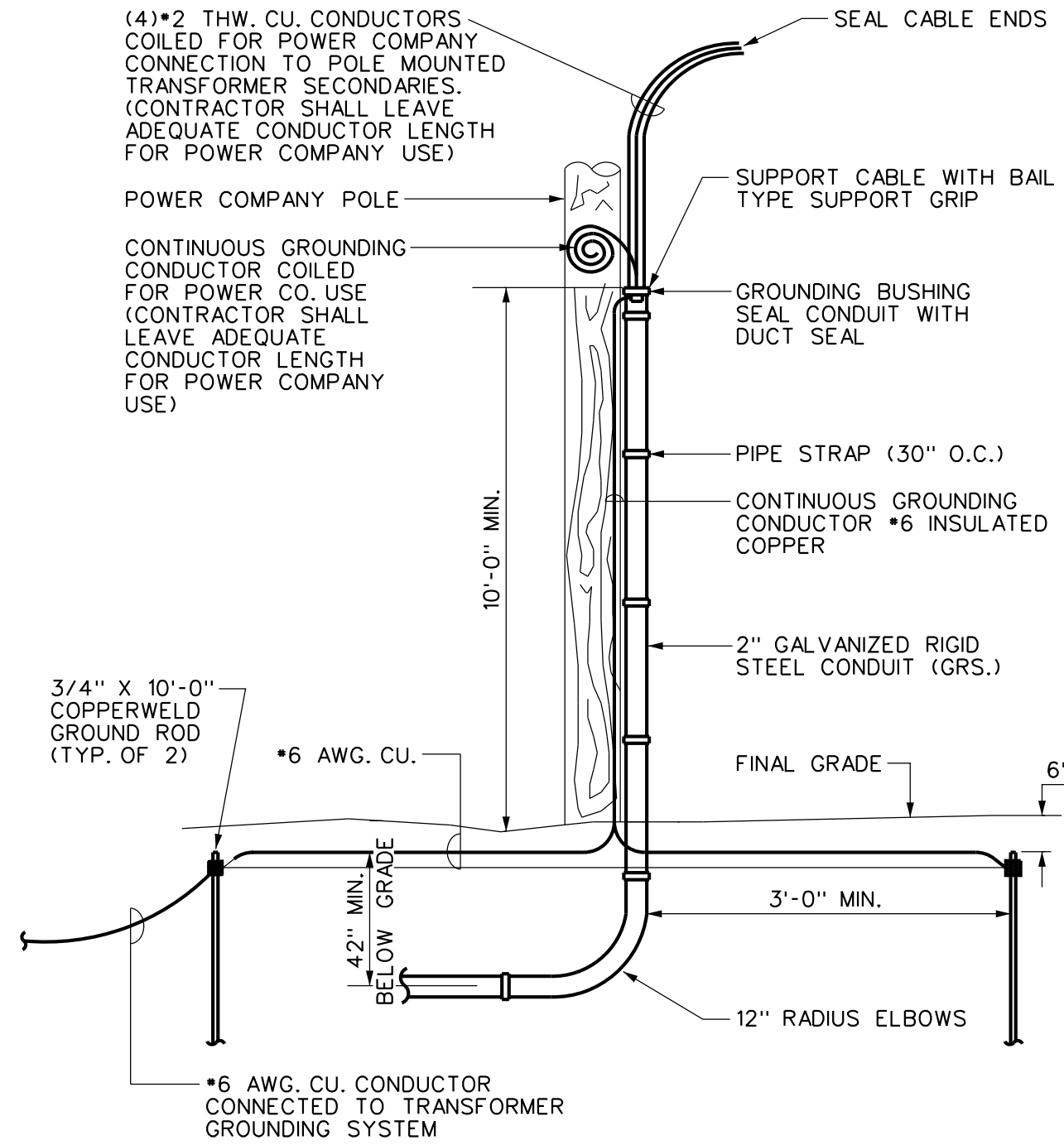


#### DETAIL NOTES:

- A. CONCRETE 5000 PSI @ 28 DAYS.
- C. ALL MATERIALS AND WORKMANSHIP SHALL CONFORM TO ACI-318.
- D. DEFORMED BARS - ASTM A-615, GRADE 60.
- E. TOP SURFACE SHALL BE TROWL FINISHED.
- F. 3/4" CHAMFER STRIP ALL EXPOSED EDGES, INCLUDING OPENING.
- G. PRECAST PADS ACCEPTABLE IF CONSTRUCTED IN ACCORDANCE WITH THE ABOVE.
- H. PROVIDE MINIMUM 3' EXTRA GROUND CONDUCTOR ABOVE TOP OF PAD FOR EACH CONNECTION.
- I. GROUND CONNECTIONS TO TRANSFORMER TANK SHALL BE MADE BY THE UTILITY COMPANY.
- J. METALLIC PRIMARY AND SECONDARY CONDUITS SHALL BE BONDED BY THE CUSTOMER TO THE GROUND GRID WITH #4 AWG CUSOLID).
- K. WHERE PRACTICABLE, THE GROUND GRID SHALL BE BONDED TO A CONTINUOUS METALLIC WATER SYSTEM.
- L. GROUND CONNECTIONS SHALL BE EXOTHERMIC OR PRESSED TYPE.

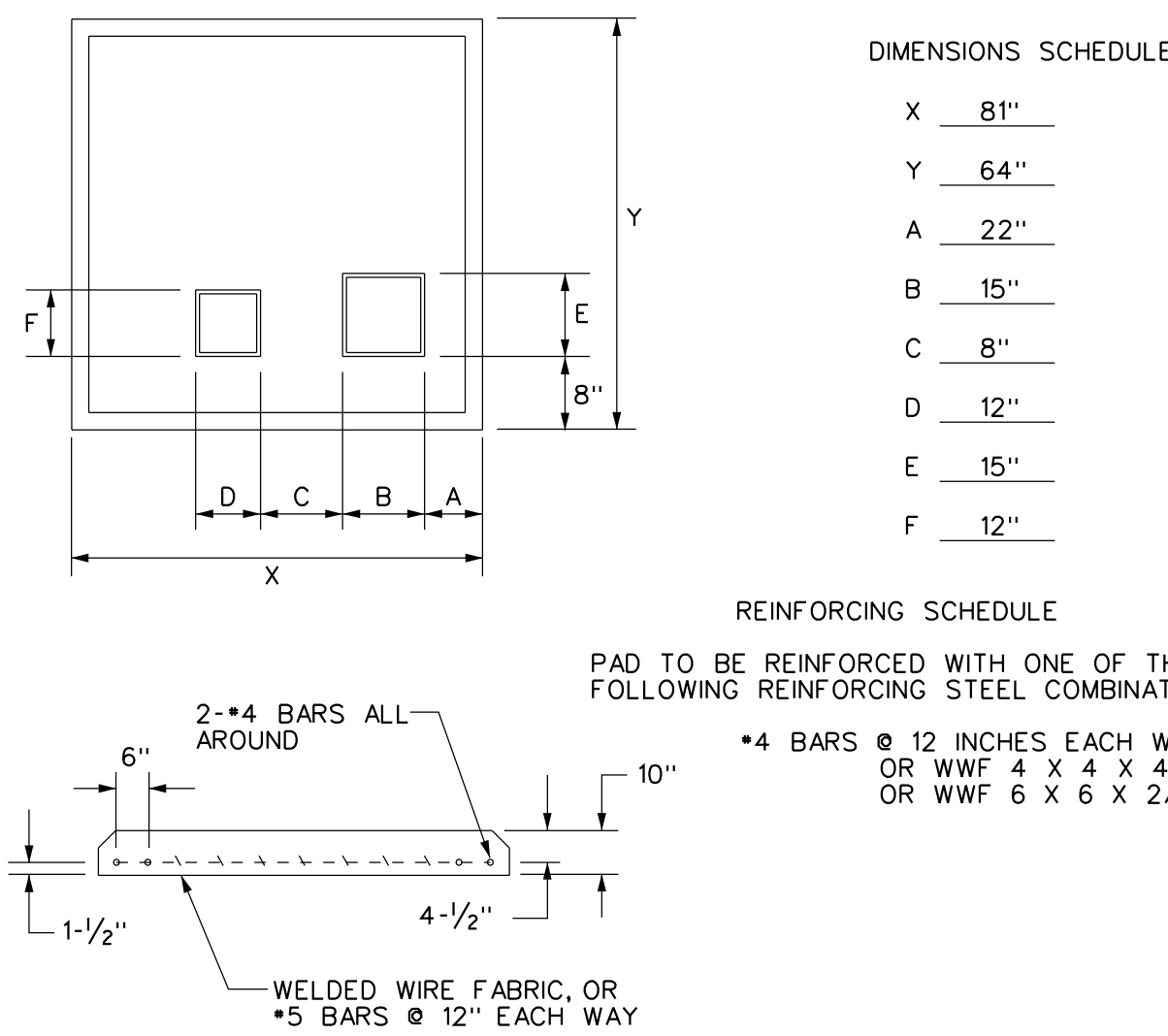
#### 4 UTILITY TRANSFORMER PAD DETAIL E602

SCALE: NONE



#### 3 UTILITY POLE CONDUIT RISER DETAIL E602

SCALE: NONE

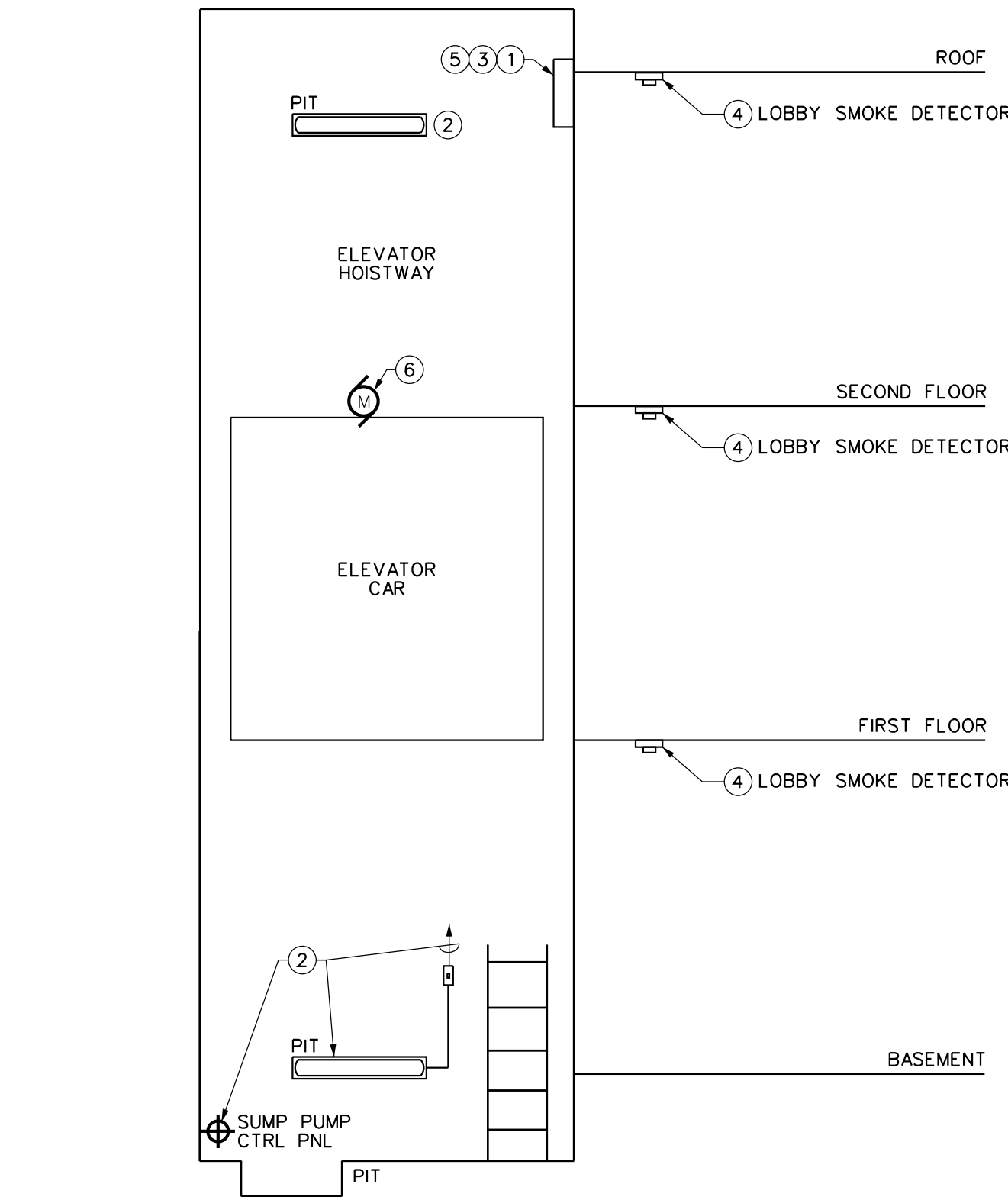


#### DIMENSIONS SCHEDULE

X	81"
Y	64"
A	22"
B	15"
C	8"
D	12"
E	15"
F	12"

#### REINFORCING SCHEDULE

PAD TO BE REINFORCED WITH ONE OF THE FOLLOWING REINFORCING STEEL COMBINATIONS:  
#4 BARS @ 12 INCHES EACH WAY  
OR WWF 4 X 4 X 4/4  
OR WWF 6 X 6 X 2/2



ELEVATOR CIRCUITING				
ELEVATOR	ELEVATOR MAIN LINE FEEDER	ELEVATOR SUMP PUMP CIRCUIT	ELEVATOR CAR LIGHTING AND VENTILATION CKT	ELEVATOR PIT LIGHTING AND RECEPTACLE CKT
ELEV. 1	MDP	PB-1: 27	PB-1: 25	PB-1: 27
ELEV. 2	MDP	PB-1: 28	PB-1: 26	PB-1: 28

#### DETAIL GENERAL NOTES:

- A. COORDINATE ALL FINAL WIRING CONNECTIONS AND EQUIPMENT INTERFACE WITH ELEVATOR INSTALLER.
- B. SEE PANELBOARD SCHEDULES FOR ELEVATOR MACHINE AND SUMP PUMP CIRCUITING INFORMATION.
- C. PROVIDE EQUIPMENT LABELING AS INDICATED ON PLAN DRAWINGS AS REQUIRED BY SECTION 16100.
- D. PROVIDE SIGNAL WIRING FROM STAND-BY AUTOMATIC TRANSFER SWITCH TO ELEVATOR CONTROLLER.

#### DETAIL SPECIFIC NOTES:

- ① PROVIDE ONE (1) 120V, 15A CIRCUIT AND LOCKABLE FUSED DISCONNECT SWITCH TO SUPPLY POWER TO ELEVATOR CAR LIGHTING, RECEPTACLE AND VENTILATION. PROVIDE (2) #12, #12G, 3/4" C. TO ELEVATOR CONTROLLER. LOCATE FUSED DISCONNECT OUTSIDE OF ELEVATOR SHAFT.
- ② PROVIDE ONE (1) 120V, 20A CIRCUIT FOR ELEVATOR PIT LIGHT FIXTURE AND SUMP PUMP CONTROL PANEL. PROVIDE (2) #12, #12G, 3/4" C. PROVIDE WEATHERPROOF SPST SWITCH AND LIGHT FIXTURE TYPE 'P'. REFER TO LUMINAIRE SCHEDULE FOR ADDITIONAL INFORMATION.
- ③ FIRE ALARM ADDRESSABLE ELEVATOR CAPTURE MODULE FOR ELEVATOR RECALL OPERATIONS. COORDINATE CONNECTION WITH ELEVATOR INSTALLER.
- ④ ELEVATOR LOBBY AREA SMOKE DETECTOR INITIATING EMERGENCY RECALL OPERATION AND SYSTEM ALARM.
- ⑤ PROVIDE (1) DEDICATED OUTSIDE TELEPHONE LINE TO ELEVATOR CONTROLLER.
- ⑥ PROVIDE 200A/3P CIRCUIT BREAKER, (3) #3/0, (1) #6G IN 2-1/2" C BRANCH CIRCUIT, AND 200A FUSED DISCONNECT SWITCH FOR ELEVATOR HOISTWAY MOTOR. FUSED DISCONNECT SHALL BE PROVIDED WITH AUX (DRY) CONTACT SWITCH TO PROVIDE INTERLOCK FUNCTION WITH THE ELEVATOR BATTERY UNIT. PROVIDE ALL CONTROL WIRING, WHEN DISCONNECT IS OPEN, THE CONTROL TO THE ELEVATOR BATTERY UNIT SHALL ALSO BE OPEN. LOCATE DISCONNECT OUTSIDE OF ELEVATOR SHAFT.

#### 5 ELEVATOR DETAIL - NON-SPRINKLED E602

SCALE: NONE