

DETAIL NOTES:

- PROVIDE DRAINS TO NEAREST FLOOR DRAIN/SINK FROM ICE MAKER SUMP, ICE BIN AND BACKFLOW PREVENTER. TERMINATE PIPING AT 1" ABOVE DRAIN.
- PITCH INDIRECT WASTE PIPING 1/4" PER FOOT MINIMUM.
- CONNECTIONS ARE DIAGRAMATIC AND SHOWN ON SIDES OF ICE MACHINE FOR CLARITY. THEY WILL NORMALLY BE ON THE BACK OF THE MACHINE. COORDINATE FINAL POINTS OF CONNECTION WITH THE MANUFACTURER.
- INSULATE SUPPLY AND DRAIN PIPING. COVER INSULATION WITH JACKET.

6

P602

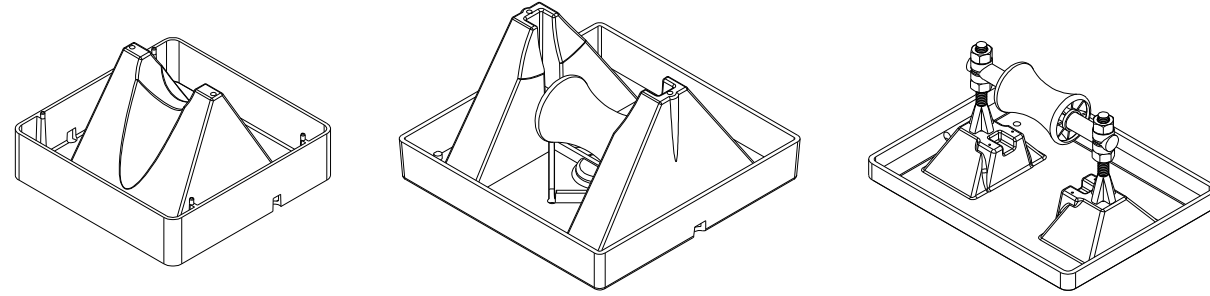
ICE MACHINE CONNECTION DETAIL

SCALE: NONE

AIR COOLED ICE MACHINE

ROOF PIPE SUPPORTS					
TYPE	NOMINAL PIPE SIZE INCHES	MAXIMUM O.D. INCHES	MAX. WT. PER STAND LBS.	CLEARANCE BELOW PIPE INCHES	NOTES
1	1 1/2"	1.9"	80	2.3 - 5.3"	1, 3
3	2"	2.375"	50	4 - 5"	
2	3"	3.75"	100	2.2 - 6.2"	2
3	3"	5"	100	2.75 - 7"	
2	4"	5"	125	2.2"	
3	4"	5"	125	2.75 - 7"	
2	5"	6"	150	2.35"	
3	5"	6"	150	2.75 - 7"	

- NOTES:
- WITHOUT ROLLER
  - 1 OR 2 SPACER UNITS MAY BE STACKED FOR MORE CLEARANCE, EACH 2" HIGH
  - UNITS MAY BE STACKED UP TO 3 HIGH FOR MORE CLEARANCE, ADD 1/2" EACH



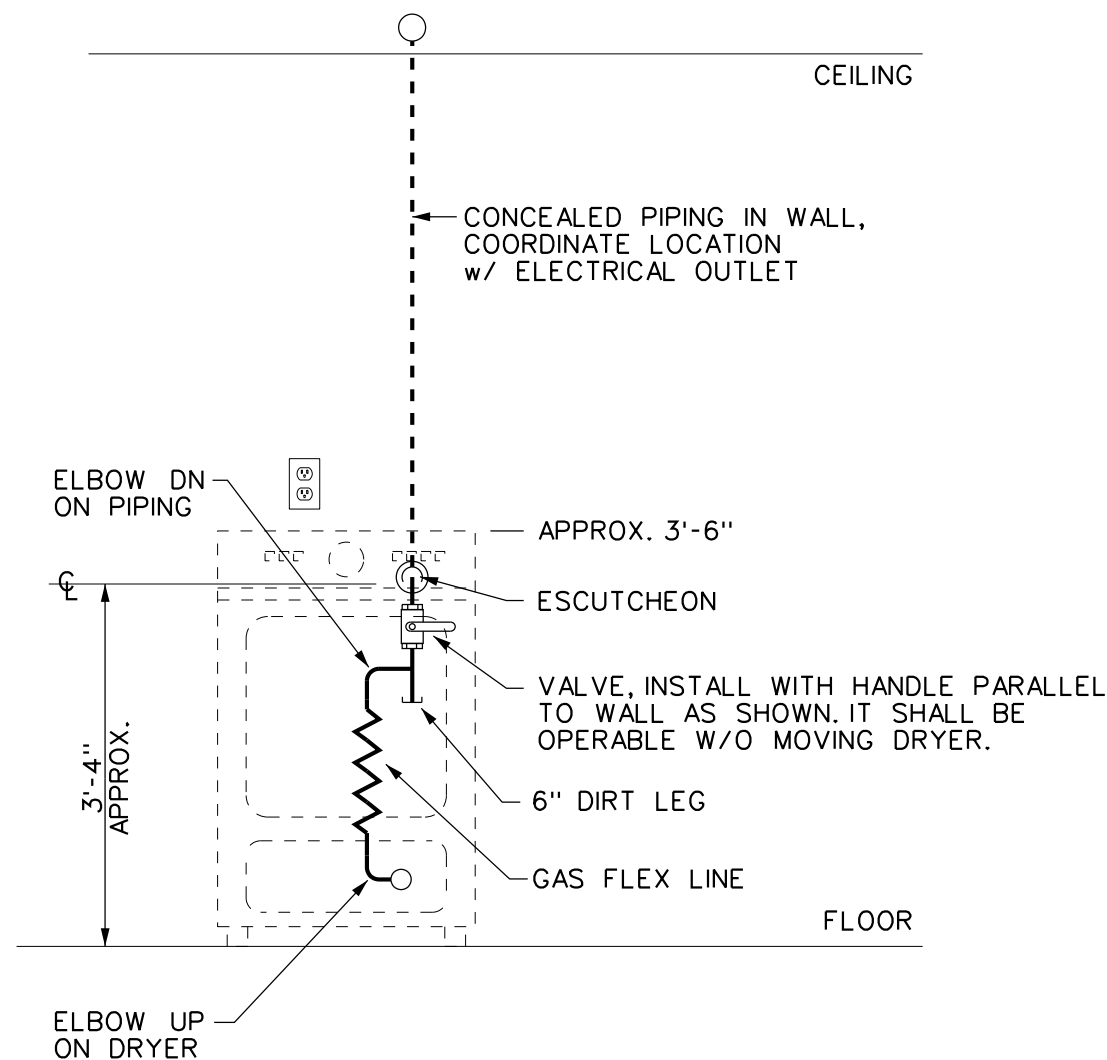
- TYPE 1                      TYPE 2                      TYPE 3
- DETAIL NOTES:
- PROVIDE PIPE SUPPORTS FOR PIPING ON ROOF. SEE TABLE ABOVE FOR TYPES.
  - GAS PIPING LOCATED ON ROOF SHALL BE SUPPORTED AT ALL TURNS AND EVERY 8'-0" FOR PIPING 1" AND LESS IN SIZE, AND EVERY 10'-0" FOR ALL OTHER SIZES. PITCH PIPING AS SPECIFIED.
  - CENTER THE PIPE STAND BELOW THE PIPE AND PLACE THE PIPE GENTLY IN THE CRADLE. PROVIDE ROOFING MANUFACTURER'S RUBBER MEMBRANE PROTECTIVE PADS BELOW EACH PIPE SUPPORT.
  - FOR BUILT-UP AND STONE BALLASTED ROOFS - REMOVE ALL LOOSE AGGREGATE FROM A 1'-0" SQUARE AREA BELOW THE PIPE STAND BEFORE INSTALLING THE PROTECTIVE PAD.
  - ALL GAS PIPING LOCATED ON THE ROOF SHALL BE CLEANED, PRIMED AND PAINTED WITH ONE(1) PRIMER AND TWO(2) FINISH COATS OF COLOR SPECIFIED.

5

P602

GAS PIPING ROOF SUPPORT DETAIL

SCALE: NONE



DETAIL NOTES:

- GAS PIPING - PROVIDE FOR EACH CLOTHES DRYER: 1/2" PIPE THRU WALL WITH BALL VALVE, DIRT LEG, ELBOW DOWN, GAS FLEX CONNECTOR AND ELBOW UP AT DRYER.
- GAS FLEX CONNECTOR - PROVIDE 1/2" x 36" LONG, STAINLESS STEEL, DORMONT SERIES 20, OR EQUAL
- PIPING SHALL INSTALLED TO BE CONCEALED BEHIND DRYER

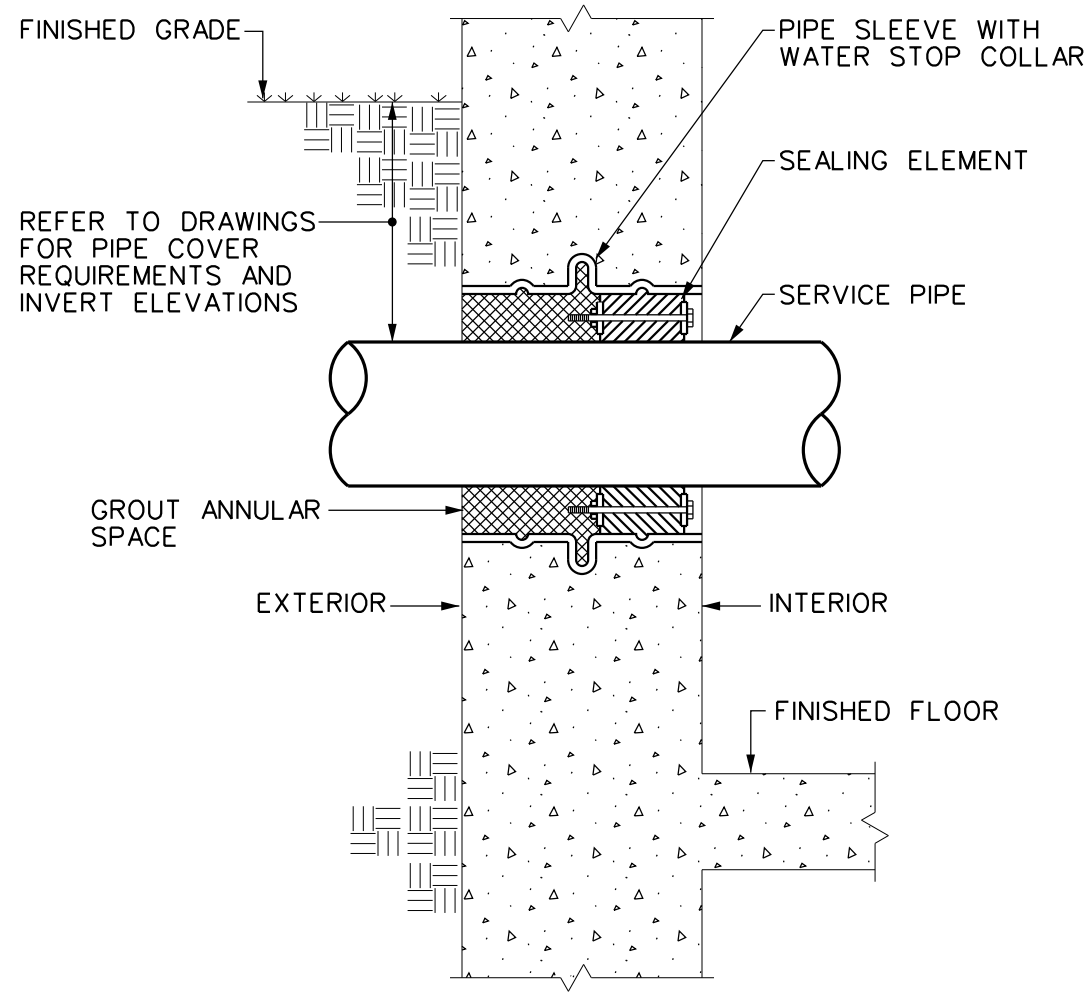
4

P602

CLOTHES DRYER INSTALLATION DETAIL

SCALE: NONE

CONCEALED VALVE

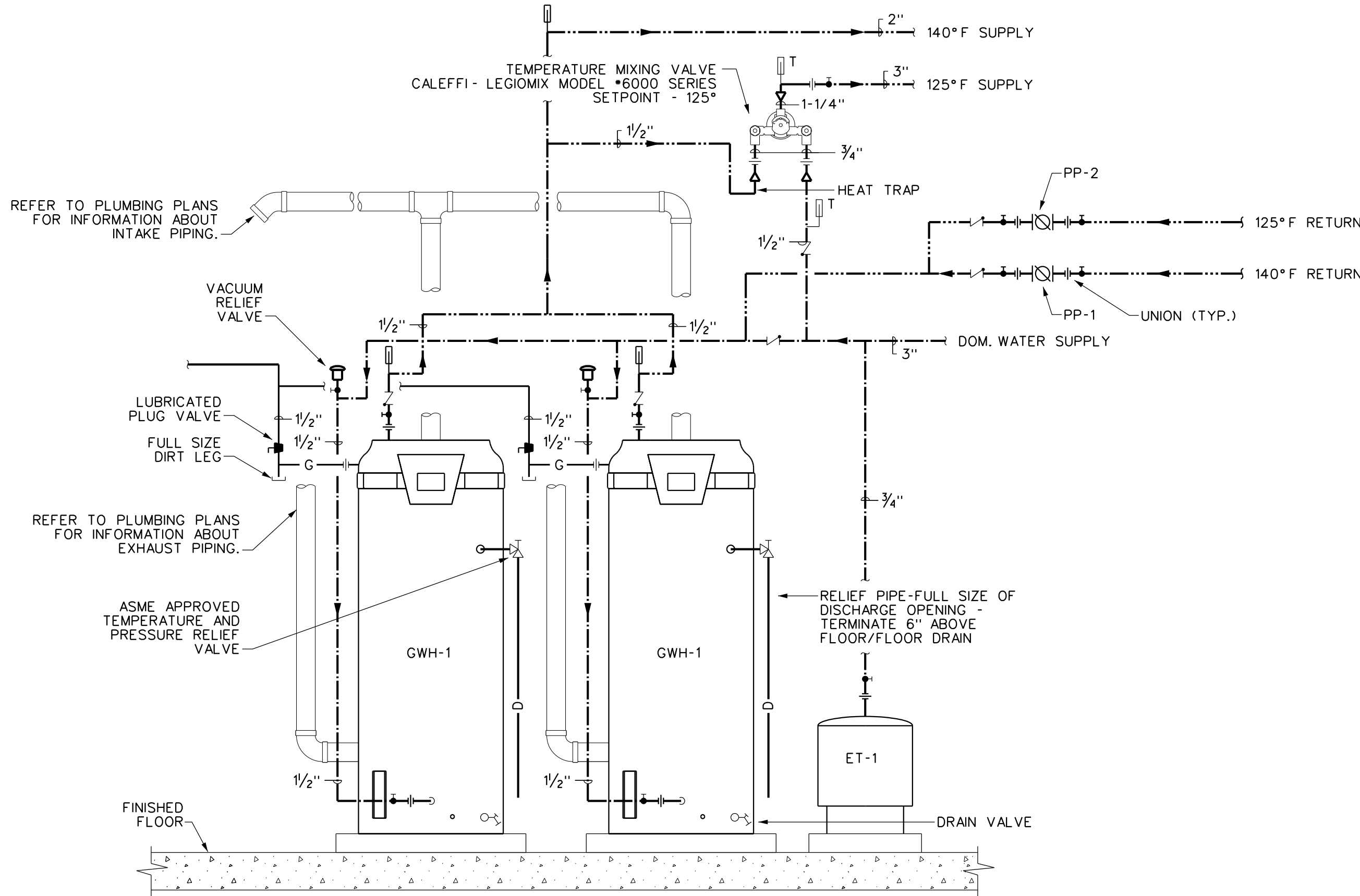


1

P602

PIPE THRU NEW EXTERIOR WALL DETAIL

SCALE: NONE



DETAIL NOTES:

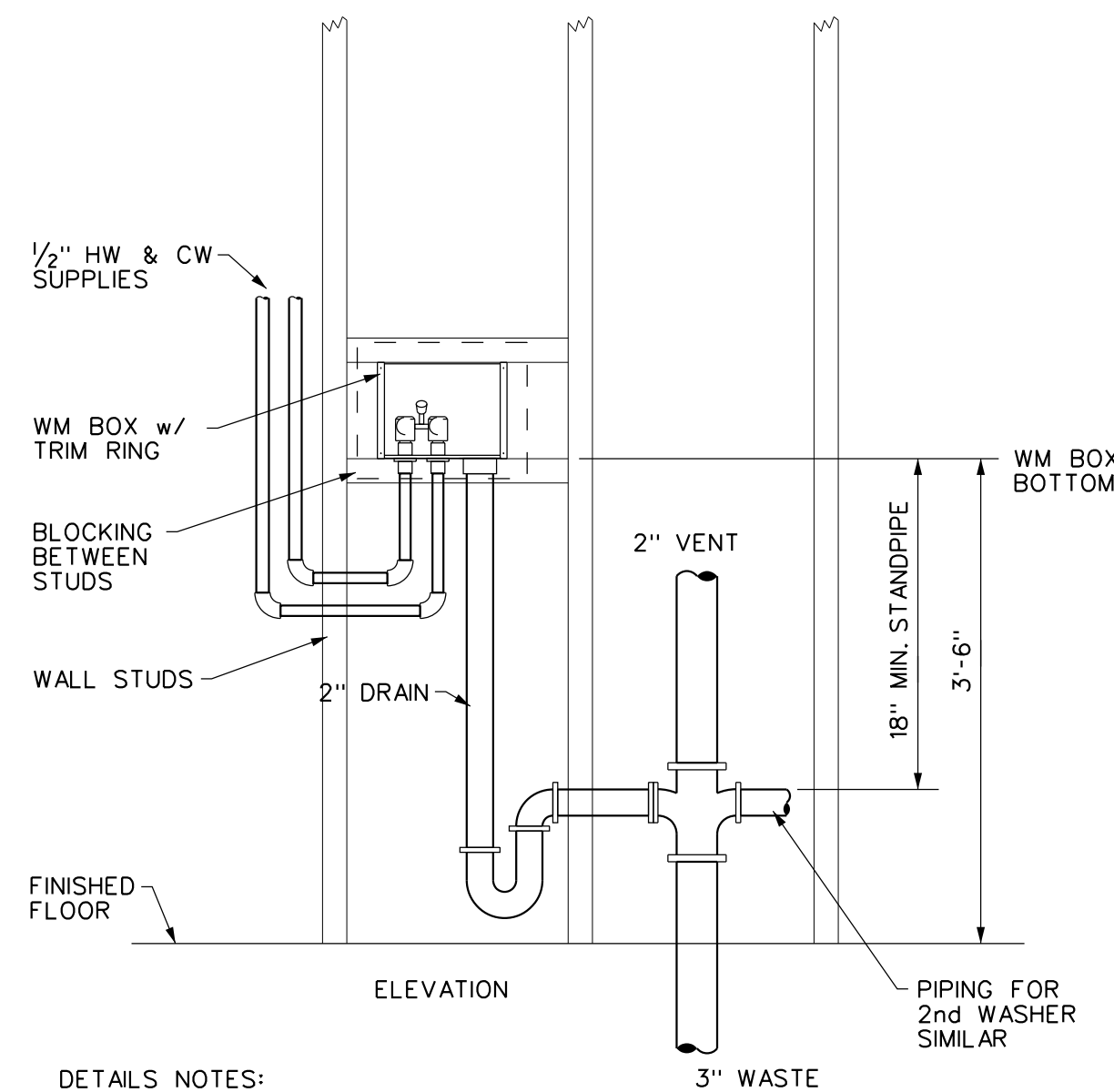
- PROVIDE PIPE NIPPLE THRU EQUIPMENT CASE. CSST & FLEX CONNECTORS SHALL NOT EXTEND THRU EQUIPMENT CASE.
- PROVIDE SHUT-OFF VALVE AND UNION AT EACH SUPPLY PIPING CONNECTION.
- P.C. IS RESPONSIBLE FOR FINAL CONNECTIONS
- THIS DETAIL IS GENERIC. WATER HEATER MFRS. INSTRUCTIONS ARE TO BE FOLLOWED WHERE THEY DIFFER FROM THESE INSTRUCTIONS.
- COORDINATE WITH STRUCTURAL FOR EQUIPMENT PAD SIZES.

2

P602

GWH-1&2 WATER HEATER DETAIL

SCALE: NONE



DETAILS NOTES:

- PROVIDE BLOCKING IN WALL FOR WM BOX
- TWO VALVE BOX WITHOUT ELECTRIC IS SHOWN. SEE SPECIFICATIONS FOR BOX TYPE AND SERVICES INCLUDED, I.E. WATER, ELECTRIC
- PROVIDE FIRE RATED WM BOXES IN ALL FIRE RATED WALLS AND PARTITIONS
- PROVIDE ONE PAIR OF SUPPLY HOSES WITH EACH WMB. HOSES SHALL BE BURST RESISTANT TYPE WITH S.S. BRAID OVER RUBBER HOSE

3

P602

WASHING MACHINE BOX DETAIL

SCALE: NONE

SINGLE LEVER VALVES, 2 WASHERS