

1 First Floor Demo Plan - Phase 2
SCALE: 1" = 20'-0"

DEMO LEGEND	
■	DEMO EXISTING WALLS & DOORS
---	DEMO EXISTING WALL FINISHES
■	AREA NOT IN SCOPE

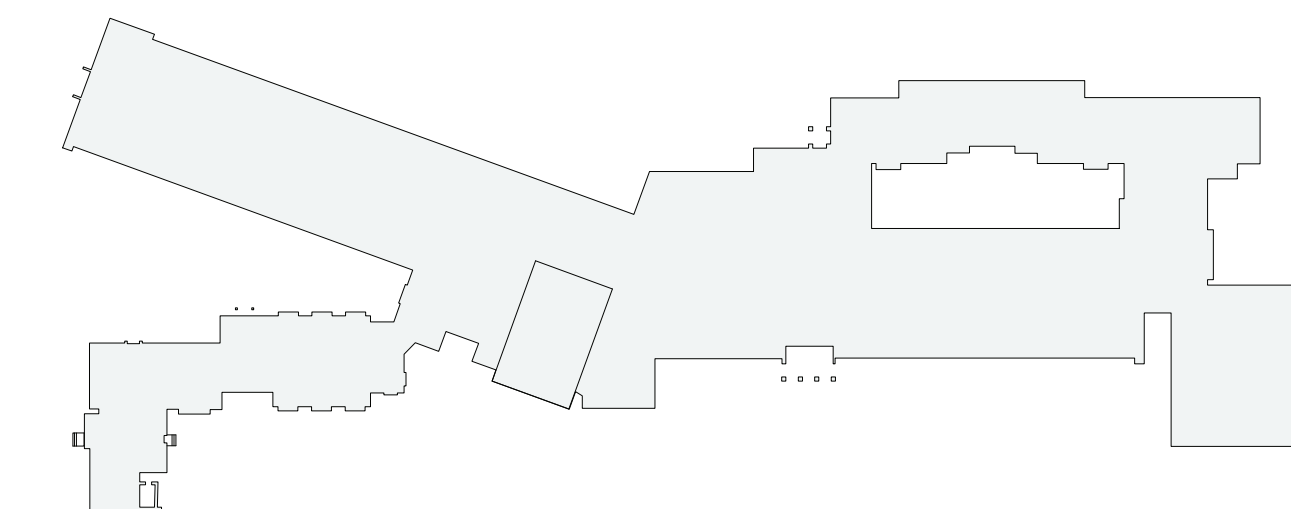
DEMOLITION KEYNOTE LEGEND PHASE 2	
Key Value	Keynote Text
1	REMOVE EXISTING MASONRY/GYP. BD/TILE WALL ASSEMBLY.
1A	REMOVE EXISTING MASONRY/GYP. BD/TILE WALL ASSEMBLY TO CREATE A DOOR OPENING. SEE DOOR SCHEDULE.
1B	REMOVE EXISTING GYP. BD/ TILE ON TAG SIDE OF THE WALL. EXISTING STUDS TO REMAIN.
1C	REMOVE EXISTING MASONRY/GYP. BD/TILE WALL ASSEMBLY TO CREATE A WINDOW OPENING. SEE WINDOW TYPES.
2	REMOVE EXISTING DOOR, FRAME AND ASSOCIATED HARDWARE.
2A	REMOVE EXISTING EXTERIOR WINDOW, FRAME AND ASSOCIATED HARDWARE.
2B	REMOVE EXISTING INTERIOR WINDOW, FRAME AND ASSOCIATED HARDWARE.
3	REMOVE EXISTING FLOORING, BASE, ADHESIVE AND ALL APPLIED ACCESSORIES. FLASH PATCH AS REQUIRED TO ACHIEVE SMOOTH AND LEVEL SUBSTRATE PER MANUF. SPEC. FOR NEW FLOORING. PITCH TO NEW FLOOR DRAINS.
4	REMOVE EXISTING GYP. BD. CEILINGS, CEILING GRID, TILES & SOFFITS BELOW STRUCTURAL DECK. REMOVE EXISTING LIGHT FIXTURES AND DEVICES.
5	REMOVE EXISTING PLUMBING FIXTURES, TOILET PARTITIONS & ASSOCIATED PLUMBING AND ACCESSORIES.
6	REMOVE EXISTING MILLWORK COUNTER, CABINETS AND SHELVING.
6A	REMOVE EXISTING LOCKERS AND ASSOCIATED HARDWARE.

KEYNOTES

- APPROVED IN PHASE 1, SED #6618001-0003-024 ON 03/16/20

BID PROJECTS

- PROJECT 1: ALL WORK NOT INCLUDED IN PROJECTS 2 & 4 LISTED BELOW
- ALTERNATE 1A: NEW CEILING & LIGHTING TO GO WITH GREY BOX HVAC WORK.
- ALTERNATE 1B: GREY BOX COMPLETE RENOVATION
- ALTERNATE 1C: CEILING AND LIGHTING IN CLASSROOMS
- ALTERNATE 1D: CAFETERIA HVAC
- PROJECT 2: LIBRARY RENOVATION
- ALTERNATE 2A: TELECOIL HEARING LOOP FOR LIBRARY
- ALTERNATE 2B: KIVA TIERED SEATING FOR LIBRARY
- ALTERNATE 2C: ACOUSTIC CEILING BAFFLES FOR LIBRARY
- PROJECT 3: NOT USED
- PROJECT 4: WINDOW REPLACEMENT & CAFETERIA ROOF REPLACEMENT
- ALTERNATE 4A: 2006 WING WINDOW REPLACEMENT



MIDLAND KEY PLAN

1" = 100'

Revision Schedule		
No.	Description	Date
1	SED SUBMISSION	09/15/2020
3	ISSUED FOR BID	01/19/2021
6	BID ADDENDUM #2	02/05/2021

Geddis
Architects

Architecture. Planning. Interiors

71 Old Post Road
P.O. Box 1020
Southport, CT 06890
(203) 256-8700



Transforming Education by Design

259 Water Street Suite 1L
Warren, RI 02885 USA
+1 401-289-2789



BARILE GALLAGHER & ASSOCIATES

CONSULTING ENGINEERS

39 MARBLE AVE. PLEASANTVILLE, NY 10570
914.328.6060 GENERAL@BGA-ENG.COM www.BGA-ENG.COM

Construction Manager

SAVIN ENGINEERS, P.C.
3 Campus Drive
Pleasantville, NY 10570
914-769-3200

Structural Engineer

ODEH ENGINEERS
1223 Mineral Spring Ave
North Providence, RI 02904
401-724-1771

Civil Engineer

WESTON & CAMPSON
1 Winners Circle, Suite 130
Albany, NY 12205
518-463-4400

Roof Consultant

WATSKY ASSOCIATES INC.
20 Madison Ave
Valhalla, NY 10595
914-948-3450

Acoustic Consultant

DP DESIGN
12 Cold Spring Street
Providence, RI
401-861-3218

AV Consultant

CAVANAUGH TOCCI
327 F Boston Post Road
Sudbury, MA 01778-3027
978-443-7871

SED#: 6618-0001-0003-025

PROJECT

Rye City Schools

555 Theodore Fremd Ave, Rye, NY 10580

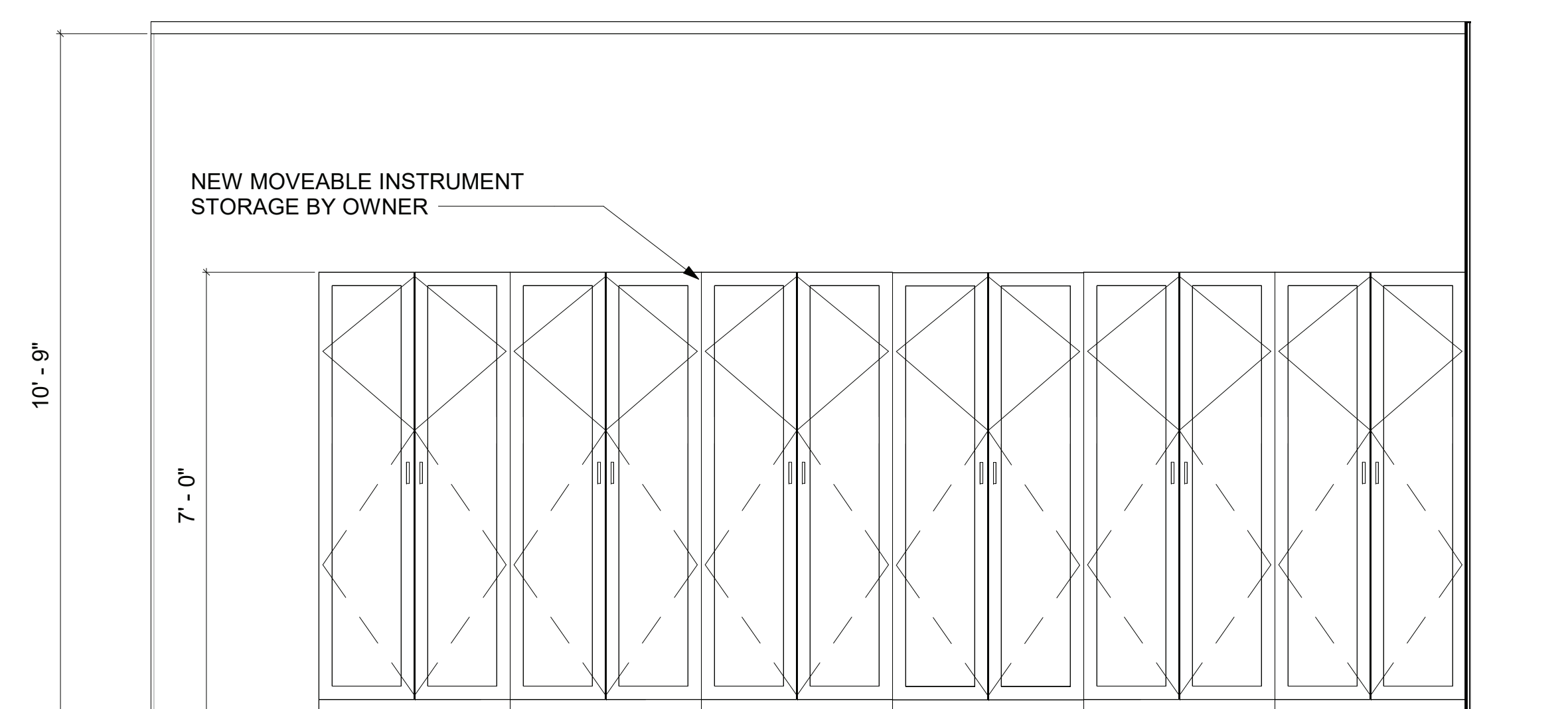
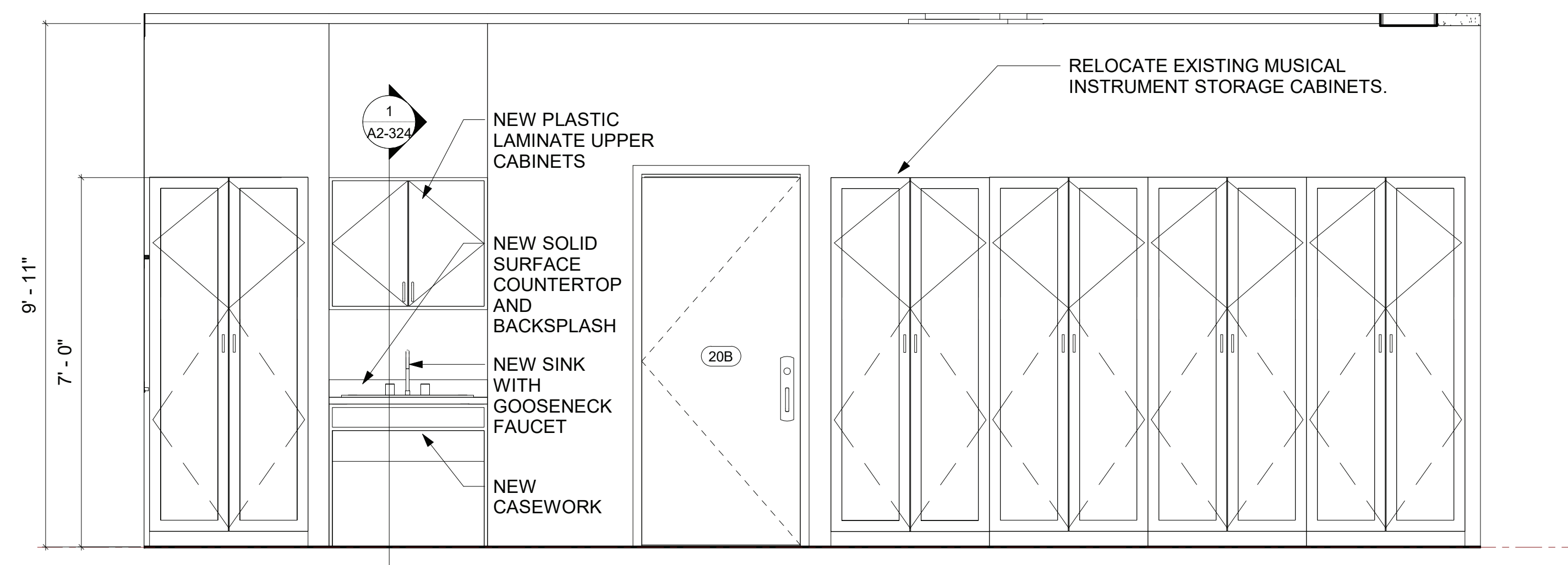
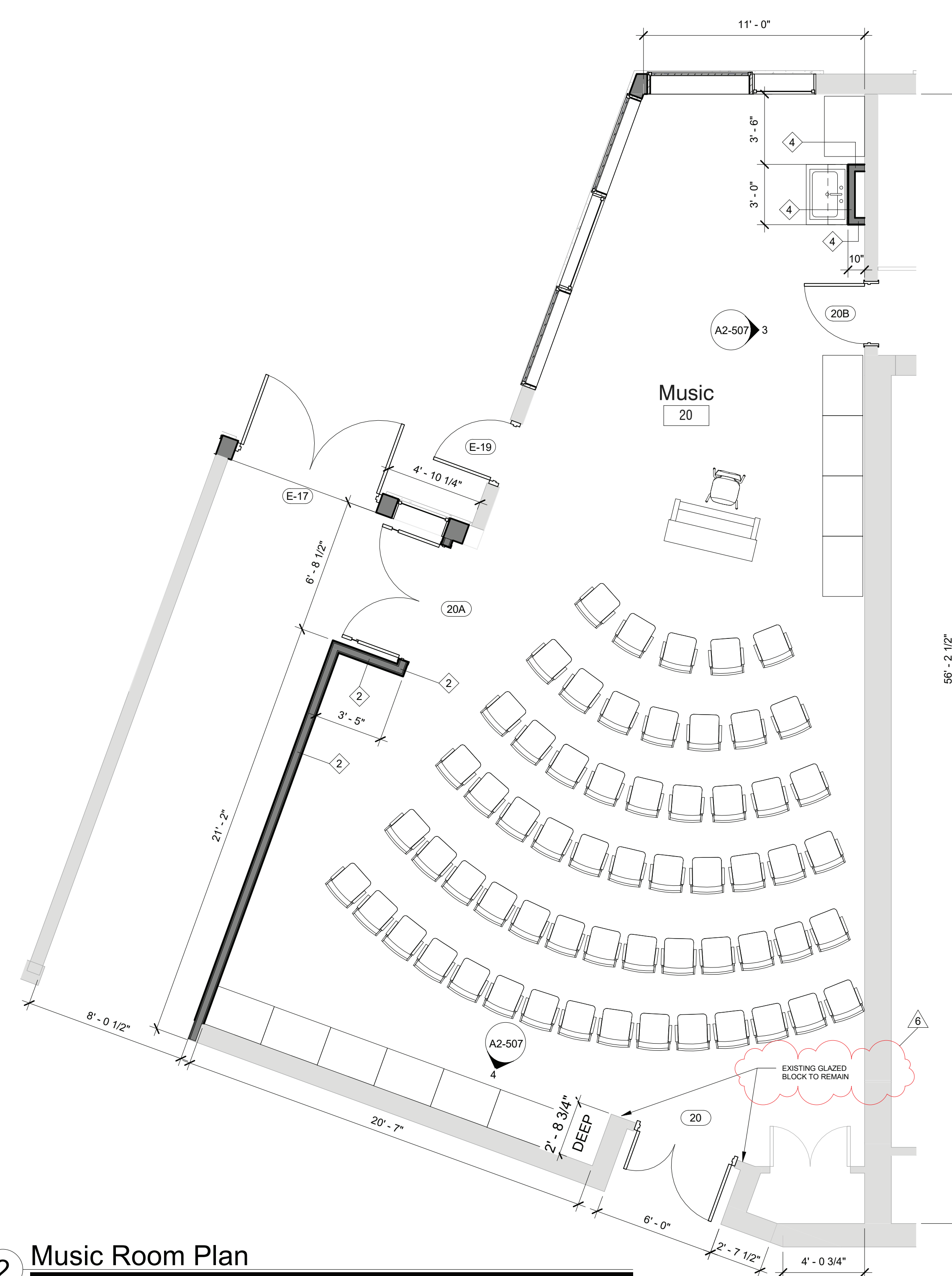
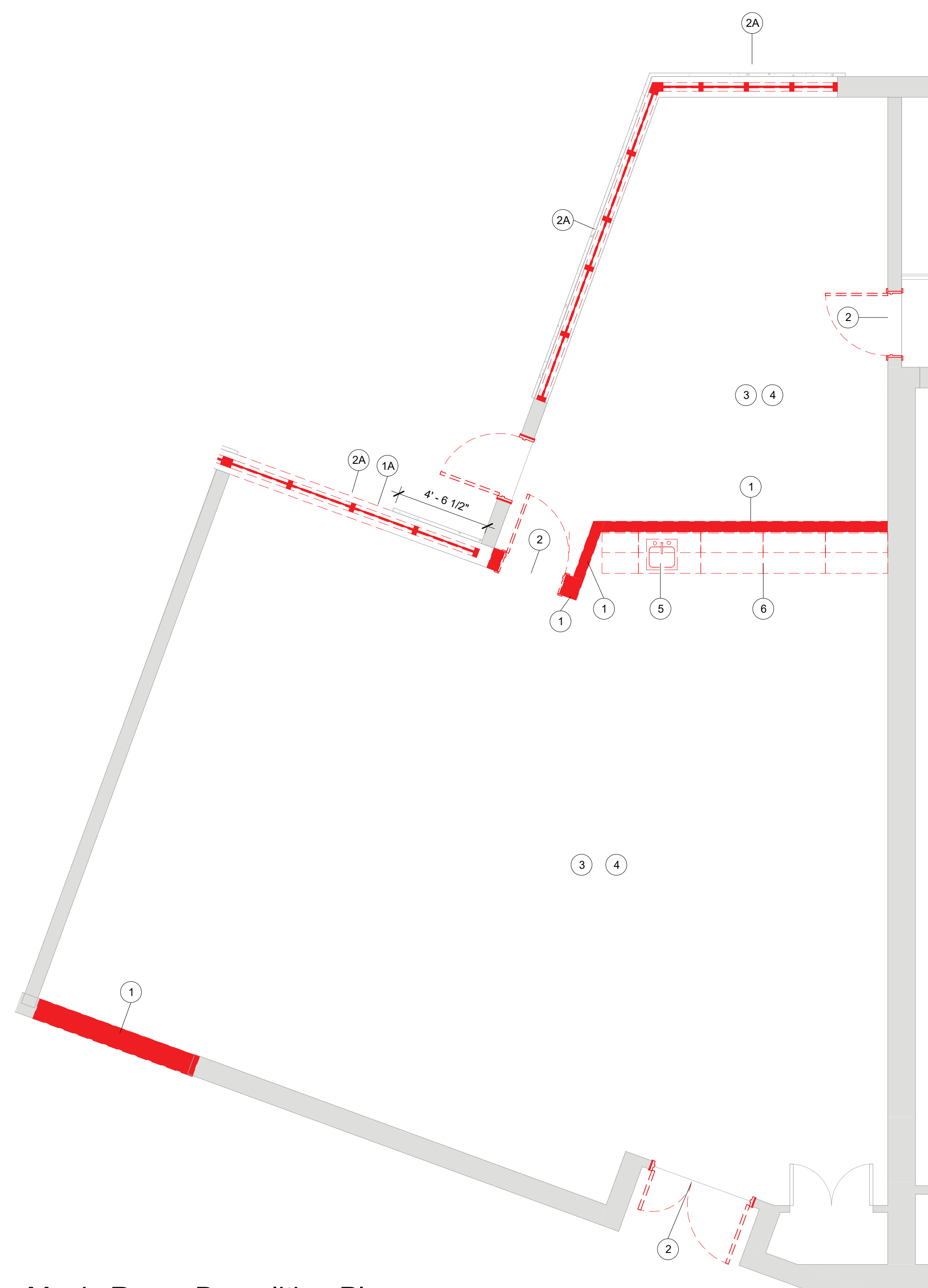
Midland Elementary School

312 Midland Ave, Rye NY 10580

FIRST FLOOR DEMOLITION PLAN




PROJECTS 1, 2 & 4

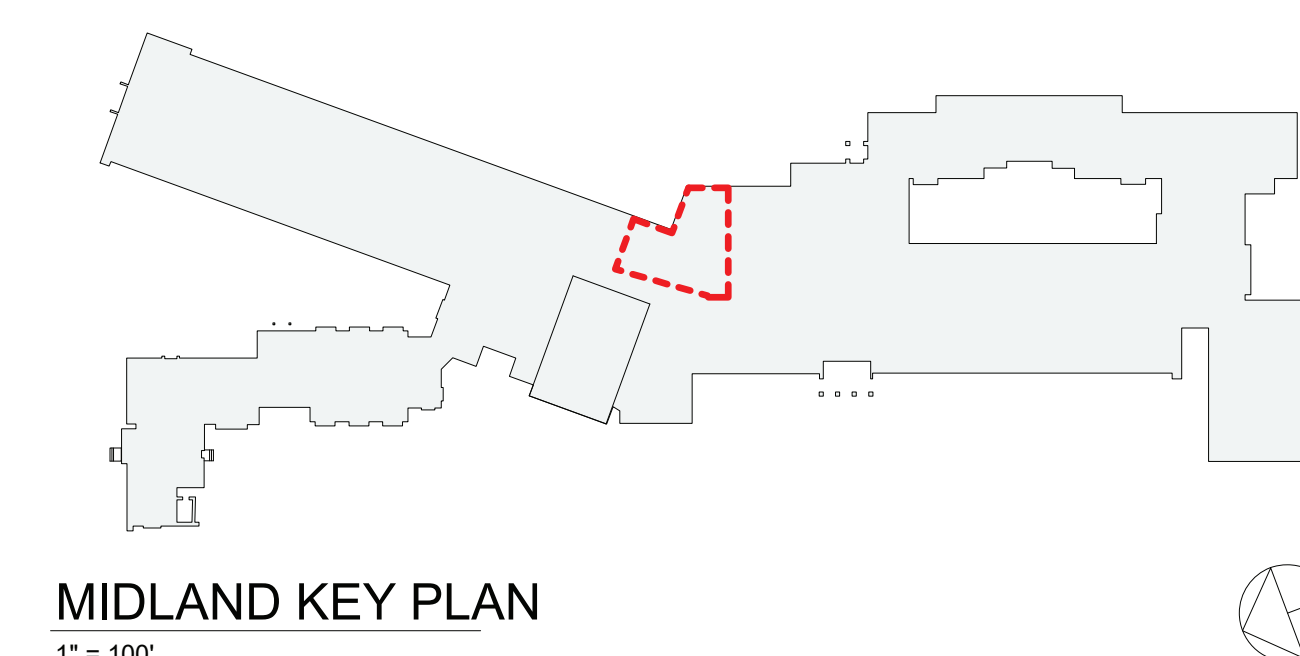
SEAL & SIGNATURE	DATE: 02/18/20
	PROJECT No: 9200
	DRAWING BY: Author
	CHK BY: Checker
	DWG No: D2-101



DEMOLITION KEYNOTE LEGEND PHASE 2	
Key Value	Keynote Text
1	REMOVE EXISTING MASONRY/GYP. BD/TILE WALL ASSEMBLY.
1A	REMOVE EXISTING MASONRY/GYP. BD/TILE WALL ASSEMBLY TO CREATE A DOOR OPENING. SEE DOOR SCHEDULE.
1B	REMOVE EXISTING GYP. BD / TILE ON TAG SIDE OF THE WALL. EXISTING STUDS TO REMAIN.
1C	REMOVE EXISTING MASONRY/GYP. BD/TILE WALL ASSEMBLY TO CREATE A WINDOW OPENING. SEE WINDOW TYPES.
2	REMOVE EXISTING DOOR, FRAME AND ASSOCIATED HARDWARE.
2A	REMOVE EXISTING EXTERIOR WINDOW, FRAME AND ASSOCIATED HARDWARE.
2B	REMOVE EXISTING INTERIOR WINDOW, FRAME AND ASSOCIATED HARDWARE.
3	REMOVE EXISTING FLOORING, BASE, ADHESIVE AND ALL APPLIED ACCESSORIES. FLASH PATCH AS REQUIRED TO ACHIEVE SMOOTH AND LEVEL SUBSTRATE PER MANUF. SPEC. FOR NEW FLOORING, PATCH TO NEW FLOOR DRAINS.
4	REMOVE EXISTING GYP. BD. CEILINGS, CEILING GRID, TILES & SOFFITS BELOW STRUCTURAL DECK. REMOVE EXISTING LIGHT FIXTURES AND DEVICES
5	REMOVE EXISTING PLUMBING FIXTURES, TOILET PARTITIONS & ASSOCIATED PLUMBING AND ACCESSORIES.
6	REMOVE EXISTING MILLWORK COUNTER, CABINETS AND SHELVING.
6A	REMOVE EXISTING LOCKERS AND ASSOCIATED HARDWARE.

DEMO LEGEND

	DEMO EXISTING WALLS & DOORS
	DEMO EXISTING WALL FINISHES
	AREA NOT IN SCOPE



Revision Schedule		
No.	Description	Date
1	SED SUBMISSION	09/15/2020
3	ISSUED FOR BID	01/19/2021
6	BID ADDENDUM #2	02/05/2021

Geddis
Architects

Architecture. Planning. Interiors

71 Old Post Road
P.O. Box 1020
Southport, CT 06890
(203) 256-8700



Transforming Education by Design

259 Water Street Suite 1L
Warren , RI 02885 USA
+1 401-289-2789



BARILE GALLAGHER & ASSOCIATES

CONSULTING ENGINEERS
39 MARBLE AVE PLEASANTVILLE, NY 10570
914.328.6060 GENERAL@BGA-ENG.com www.BGA-ENG.com

Construction Manager
SAVIN ENGINEERS, P.C.

SAVIN ENGINEERS, P.C.
3 Campus Drive
Pleasantville, NY 10570
914-769-3200

Structural Engineer
ODEH ENGINEERS
1223 Mineral Spring Ave
North Providence, RI 02904
401-724-1771

Civil Engineer
WESTON & SAMPSON
1 Winners Circle, Suite 130
Albany, NY 12205
518-462-4400

Roof Consultant
WATSKY ASSOCIATES INC.
20 Madison Ave
Valhalla, NY 10595
914-942-2450

914-948-3450
Acoustic Consultant
DP DESIGN
12 Cold Spring Street
Providence, RI
02918-2310

401-861-3218
AV Consultant
CAVANAUGH TOCCI
327 F Boston Post Road
Sudbury, MA 01776-3027

SED#: 6618-0001-0003-025

PROJECT

Rye City Schools

555 Theodore Fremd Ave, Rye, NY 10580

Midland Elementary School

312 Midland Ave, Rye NY 10580

MUSIC ROOM DEMO AND FLOOR PLAN

PROJECT 1

SEAL & SIGNATURE	DATE: 02/27/20
	PROJECT No: 9200
	DRAWING BY: Author
	CHK BY: Checker
	DWG No:
	A2-507

DATE: 02/27/20

PROJECT No: 9200

DRAWING BY: Author
CHK BY: Checker

CHK BY: _____ Checker
DWG No:

A2-507

Revision Schedule		
No.	Description	Date
	SED Submission: Revision 1	10/15/2019
	Issued For Bid	02/07/2020
3	ISSUED FOR BID	01/19/2021
6	BID ADDENDUM #2	02/05/2021

Geddis
Architects

Architecture. Planning. Interiors

71 Old Post Road
P.O. Box 1020
Southport, CT 06890
(203) 256-8700



Transforming Education by Design

259 Water Street Suite 1L
Warren, RI 02885 USA
+1 401-289-2789



BARILE GALLAGHER & ASSOCIATES

CONSULTING ENGINEERS
39 MARBLE AVE. PLEASANTVILLE, NY 10570
914.328.6060 GENERAL@BGA-ENG.COM WWW.BGA-ENG.COM

Construction Manager
SAVIN ENGINEERS, P.C.
3 Campus Drive
Pleasantville, NY 10570
914-769-3200

Structural Engineer
ODEH ENGINEERS
1223 Mineral Spring Ave
North Providence, RI 02904
401-724-1771

Civil Engineer
WESTON & SAMPSON
1 Winners Circle, Suite 130
Albany, NY 12205
518-463-4400

Roof Consultant
WATSKY ASSOCIATES INC.
20 Madison Ave
Valhalla, NY 10595
914-948-3450

Acoustic Consultant
DP DESIGN
12 Cold Spring Street
Providence, RI
401-861-3218

AV Consultant
CAVANAUGH TOCCI
327 F Boston Post Road
Sudbury, MA 01776-3027
978-443-7871

SED#: 6618-0001-0003-025

PROJECT

Rye City Schools

555 Theodore Fremd Ave, Rye, NY 10580

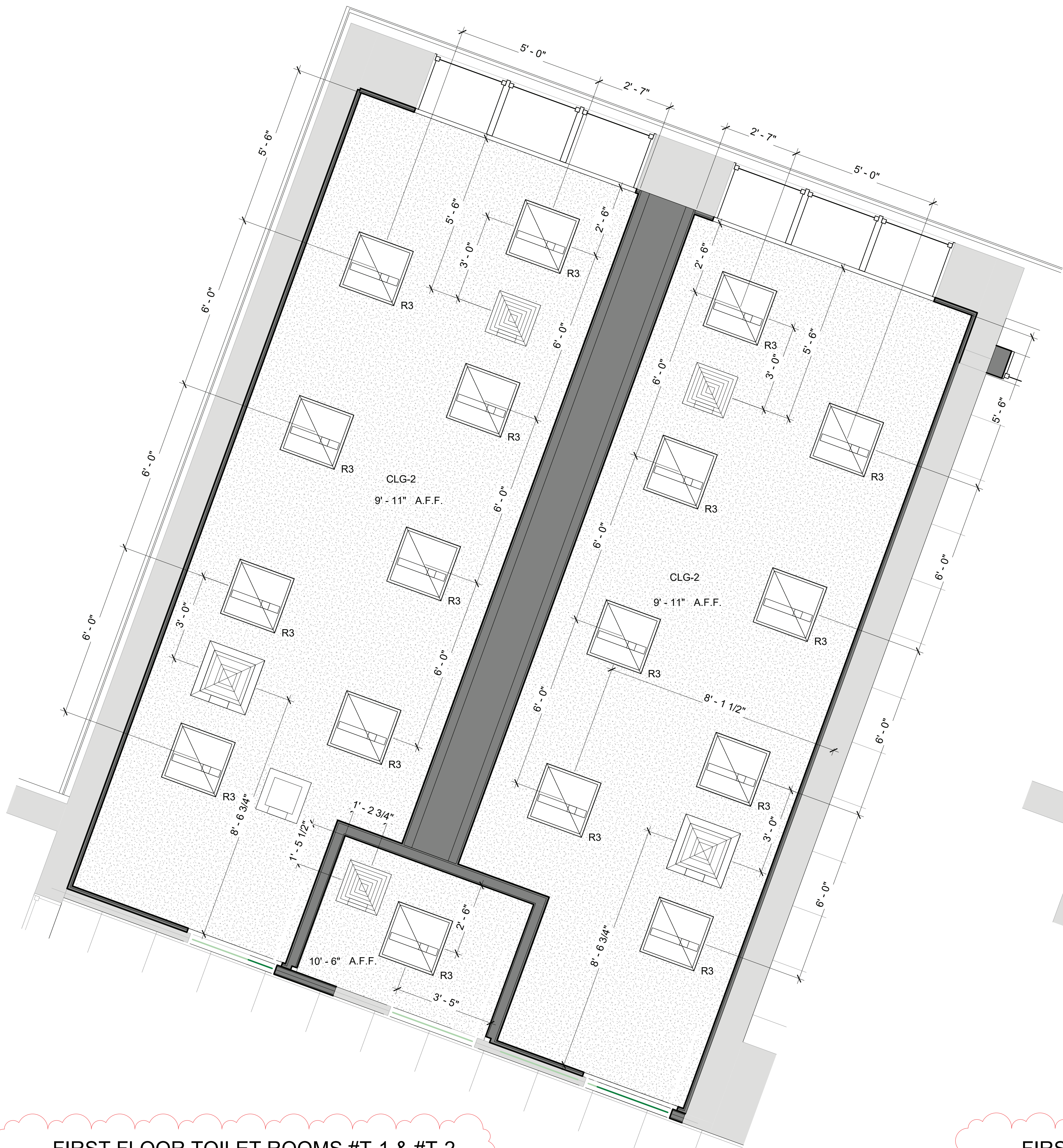
Midland Elementary School

312 Midland Ave, Rye NY 10580

ENLARGED TOILET PLANS,
ELEVATIONS & DETAILS

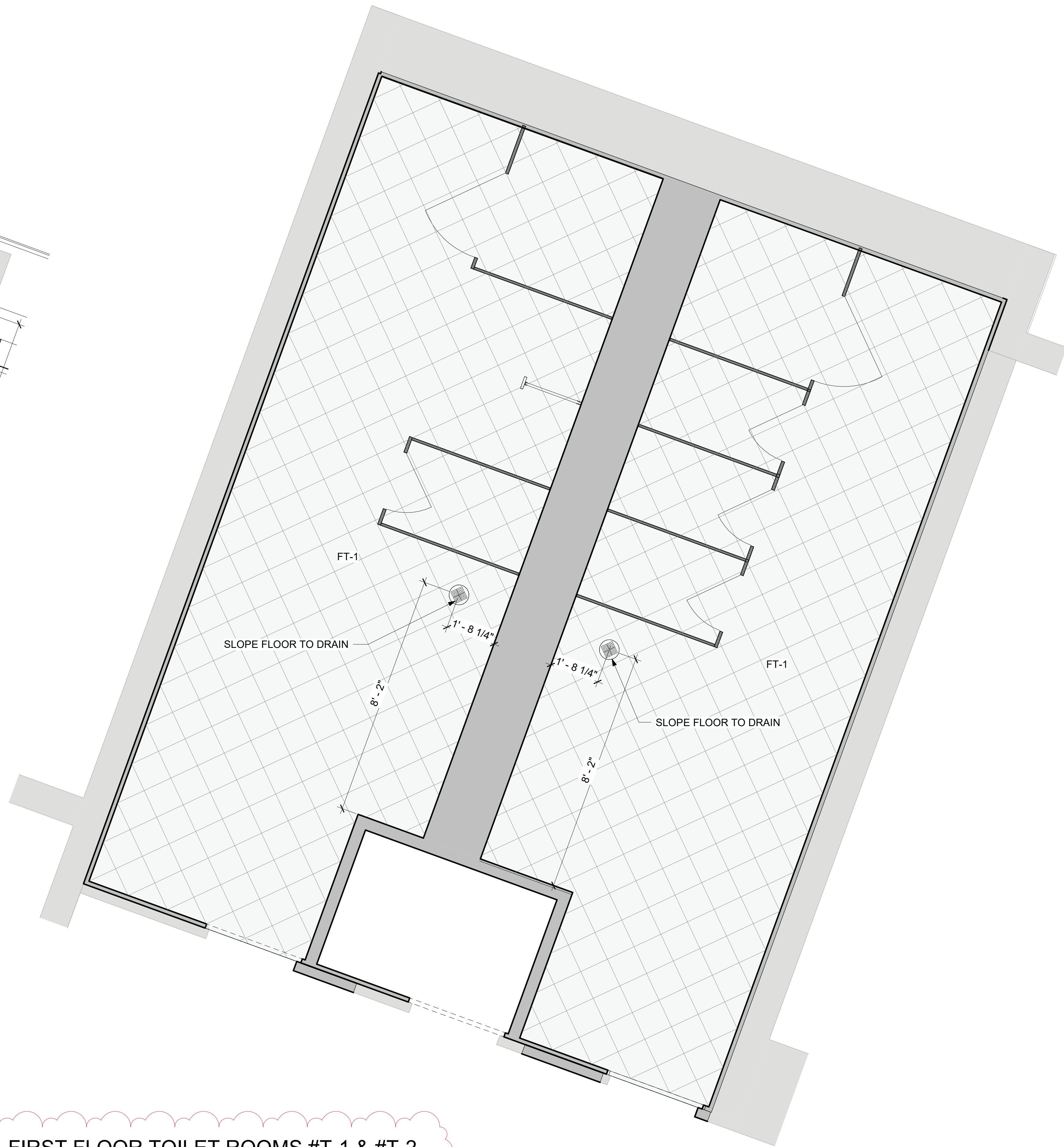
PROJECT 1

SEAL & SIGNATURE | DATE: 01/19/21
PROJECT No: 9200
DRAWING BY: Author
CHK BY: Checker
DWG No: A2-540



1 FIRST FLOOR TOILET ROOMS #T-1 & #T-2
REFLECTED CEILING PLAN

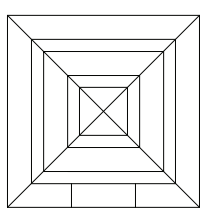
SCALE: 1/2" = 1'-0"



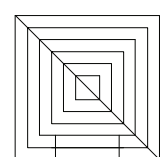
2 FIRST FLOOR TOILET ROOMS #T-1 & #T-2
FLOOR PATTERN PLAN

SCALE: 1/2" = 1'-0"

LEGEND



SUPPLY DIFFUSER: SEE
MECH. DWGS FOR INFO



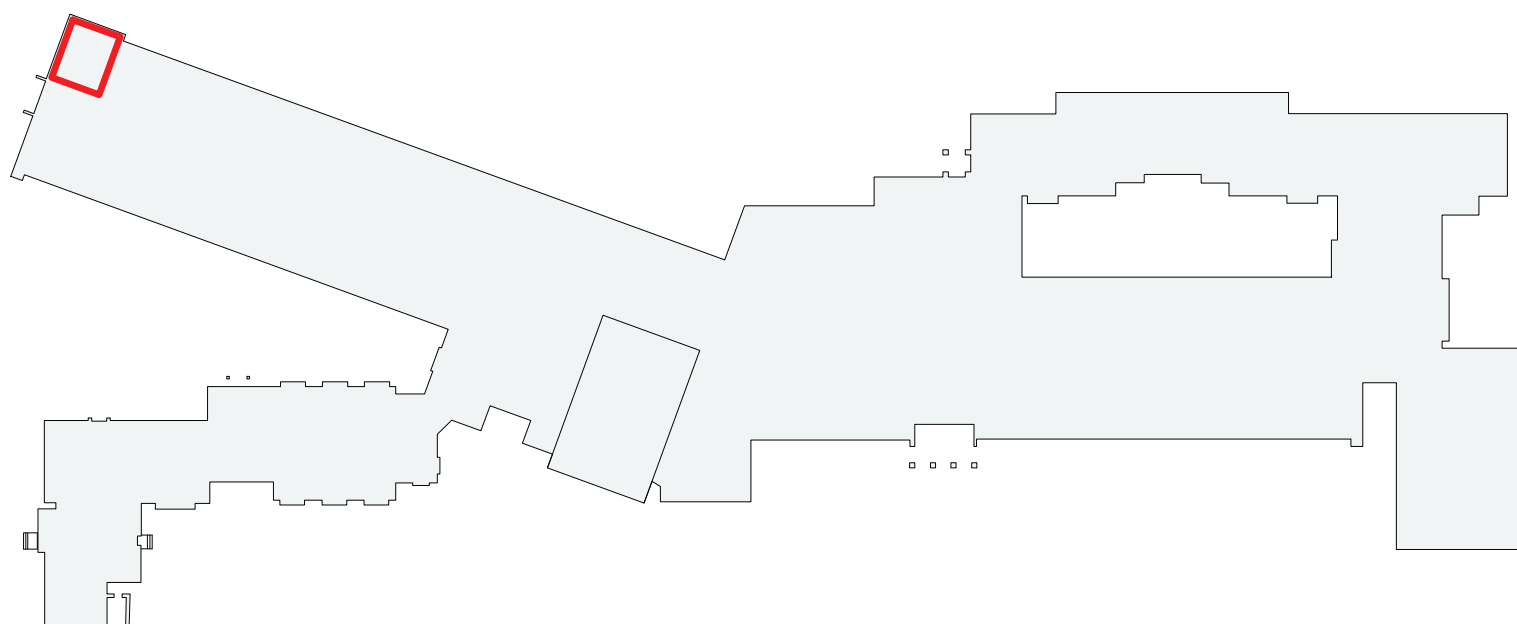
RETURN FAN:SEE MECH.
DWGS FOR INFO



NEW FLOOR DRAIN

NOTES

1. SEE DRAWING A2-400 FOR CEILING
FIXTURE AND MATERIAL LEGENDS.
2. SEE DRAWING A2-700 FOR FINISH
MATERIALS LEGEND.



MIDLAND KEY PLAN

1" = 80'