

Revision Schedule		
No.	Description	Date
1	SED SUBMISSION	09-15-2020
2	SED SUBMISSION: Addendum #1	01-11-2021
3	ISSUED FOR BID	01-19-2021
5	BID ADDENDUM #2	02-05-2021

Geddis Architects

Architecture. Planning. Interiors

71 Old Post Road
P.O. Box 1020
Southport, CT 06890
(203) 256-8700

Fielding International

Transforming Education by Design

259 Water Street Suite 1L
Warren, RI 02885 USA
+1 401-289-2789

bga

BARILE GALLAGHER & ASSOCIATES

CONSULTING ENGINEERS
39 MARBLE AVE. PLEASANTVILLE, NY 10570
914.328.6060 GENERAL@BGA-ENG.COM WWW.BGA-ENG.COM

Construction Manager
SAVIN ENGINEERS, P.C.
3 Campus Drive
Pleasantville, NY 10570
914-769-3200

Structural Engineer
ODEH ENGINEERS
1223 Mineral Spring Ave
North Providence, RI 02904
401-724-1771

Civil Engineer
WESTON & SAMPSON
1 Winners Circle, Suite 130
Albany, NY 12205
518-463-4400

Roof Consultant
WATSKY ASSOCIATES INC.
20 Madison Ave
Valhalla, NY 10595
914-948-3450

Acoustic Consultant
DP DESIGN
12 Cold Spring Street
Providence, RI
401-861-3218

AV Consultant
CAVANAUGH TOCCI
327 F Boston Post Road
Sudbury, MA 01776-3027
978-443-7871

SED#: 6618-0001-0002-015

PROJECT

Rye City Schools

555 Theodore Fremd Ave, Suite B-101

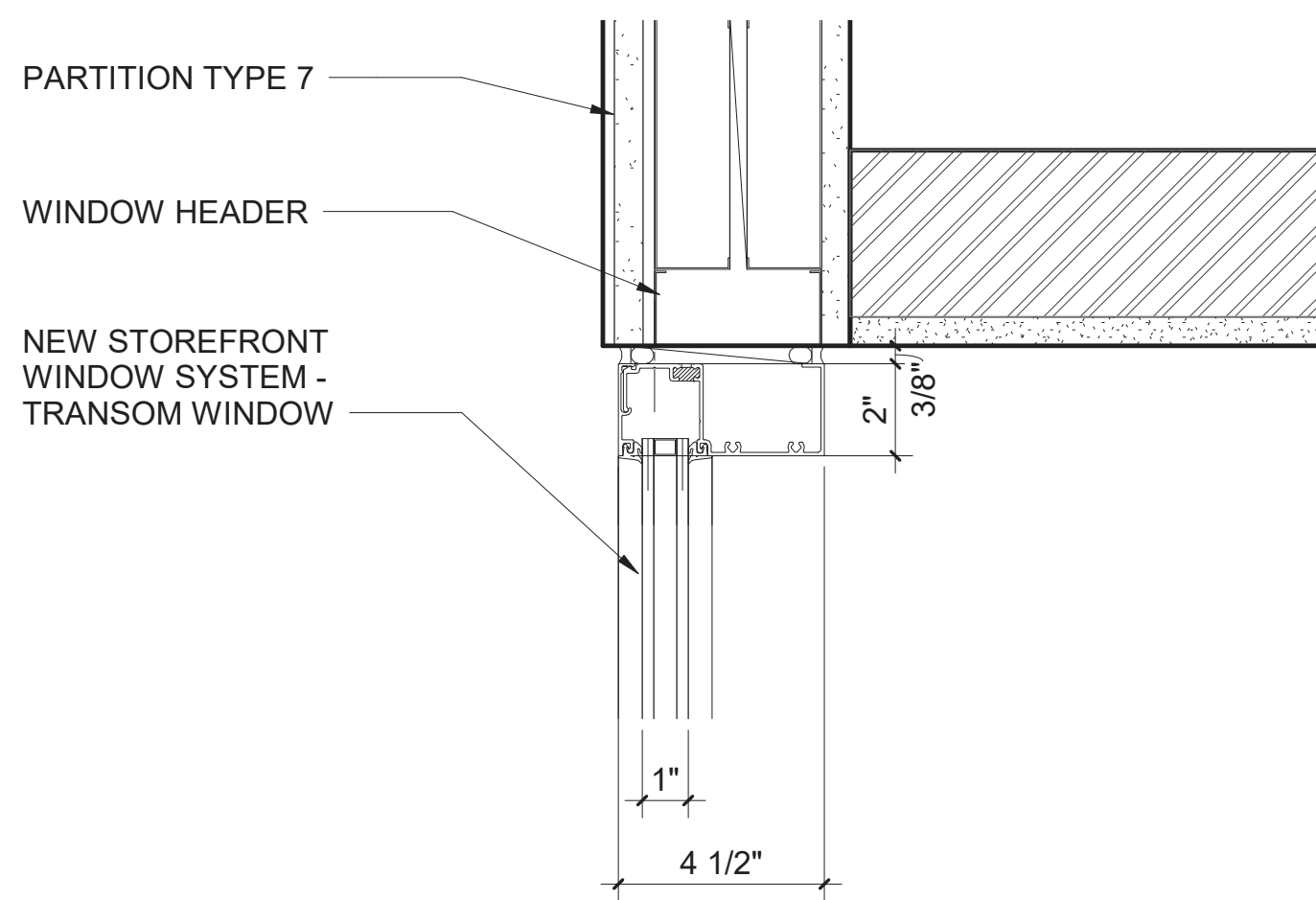
Milton Elementary School

12 Hewlett St, Rye, NY 10580

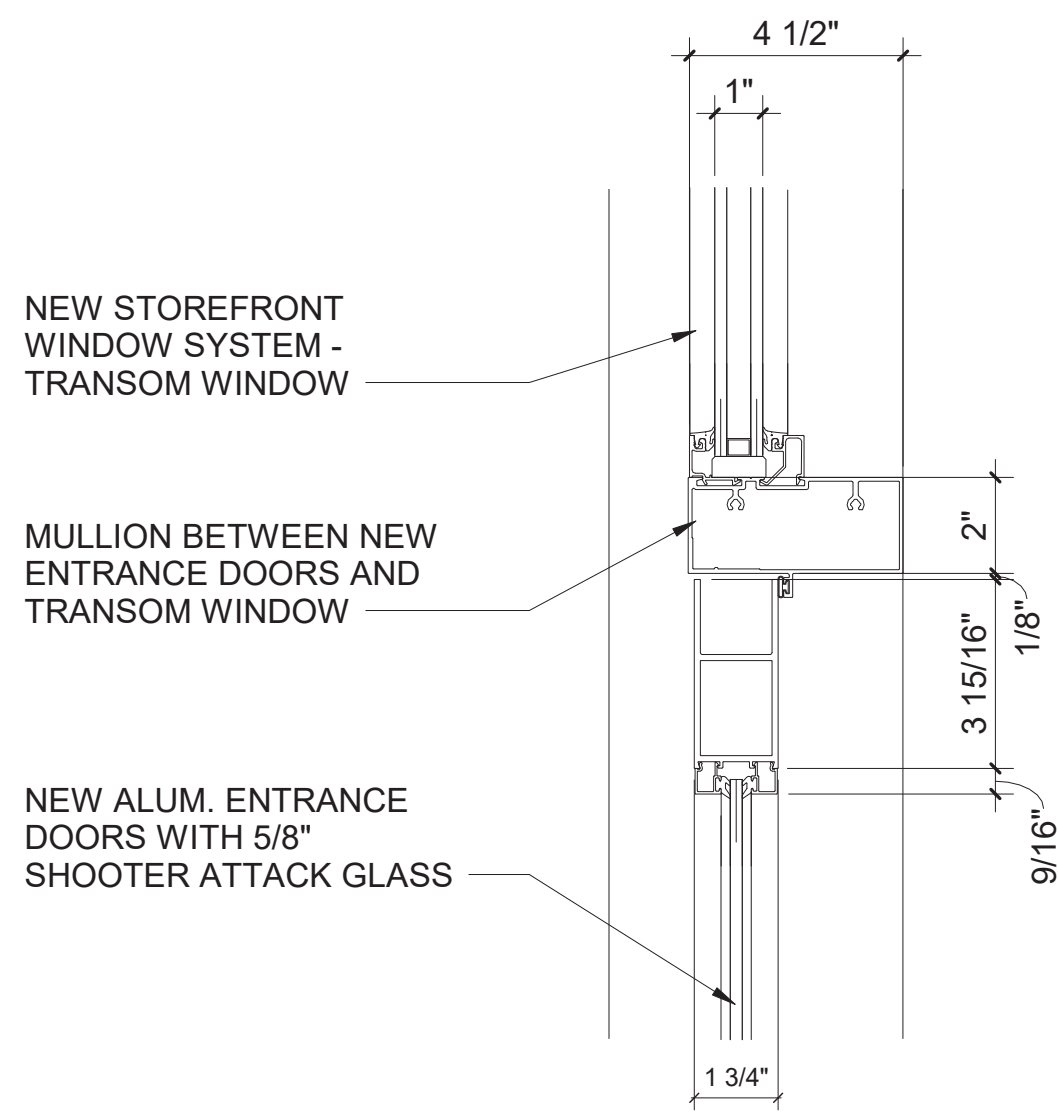
LIBRARY BUILDING
SECTIONS and ALTERNATE

PROJECT 2 & 2B

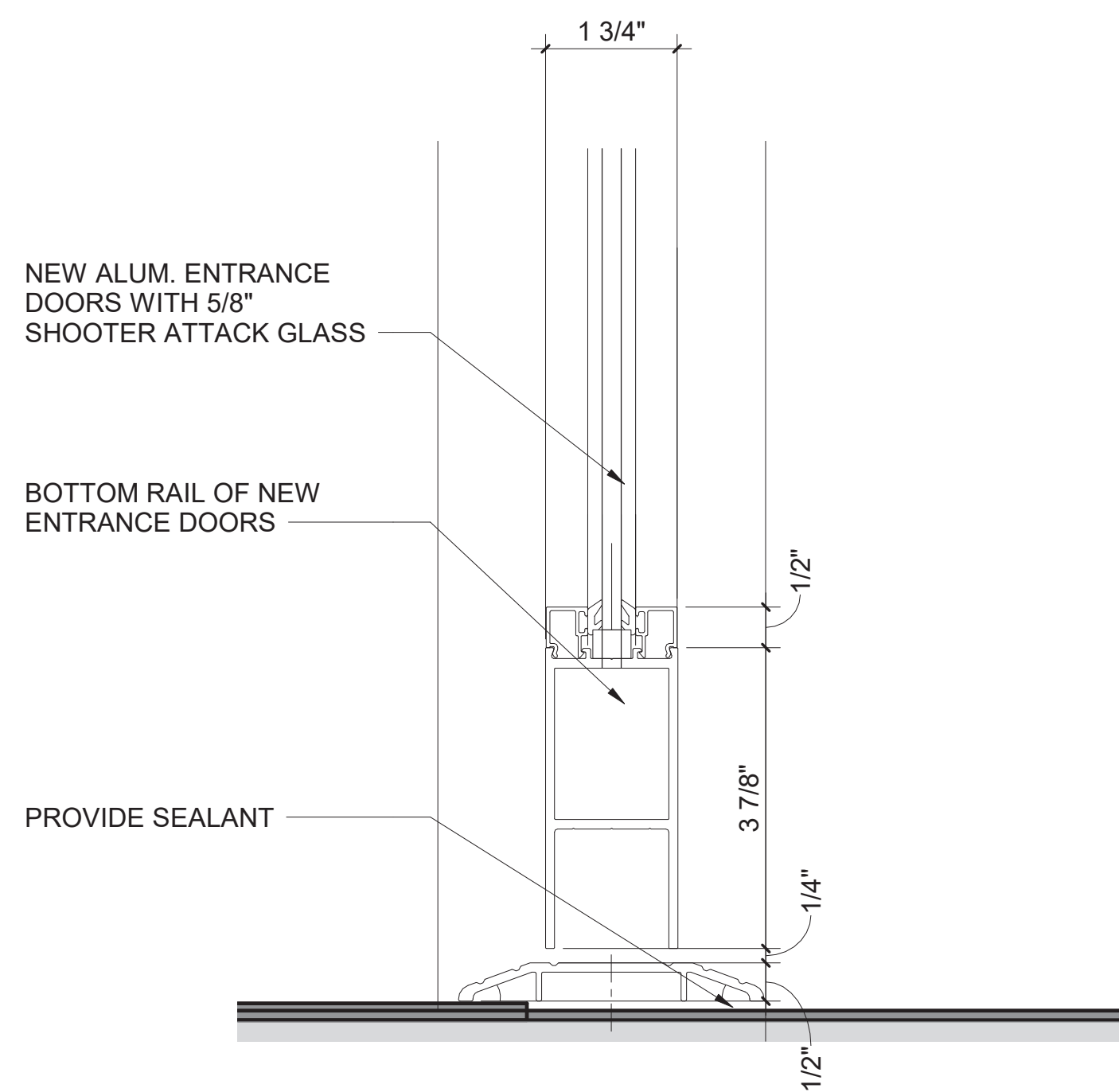
SEAL & SIGNATURE DATE: 06/10/20
PROJECT No: 9200
DRAWING BY: Author
CHK BY: Checker
DWG No: A2-302



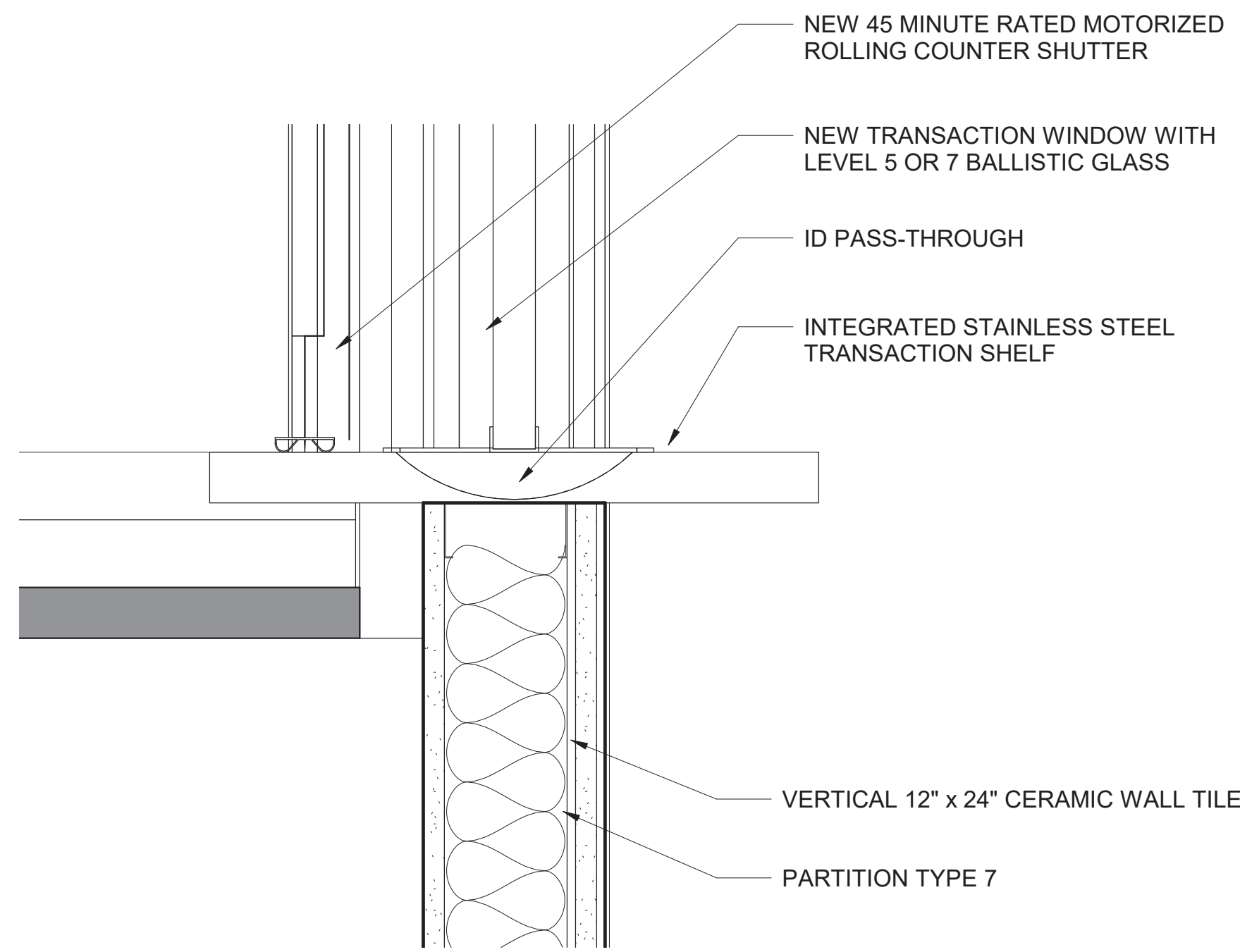
1 Secure Vestibule Transom Window Head
SCALE: 3" = 1'-0"



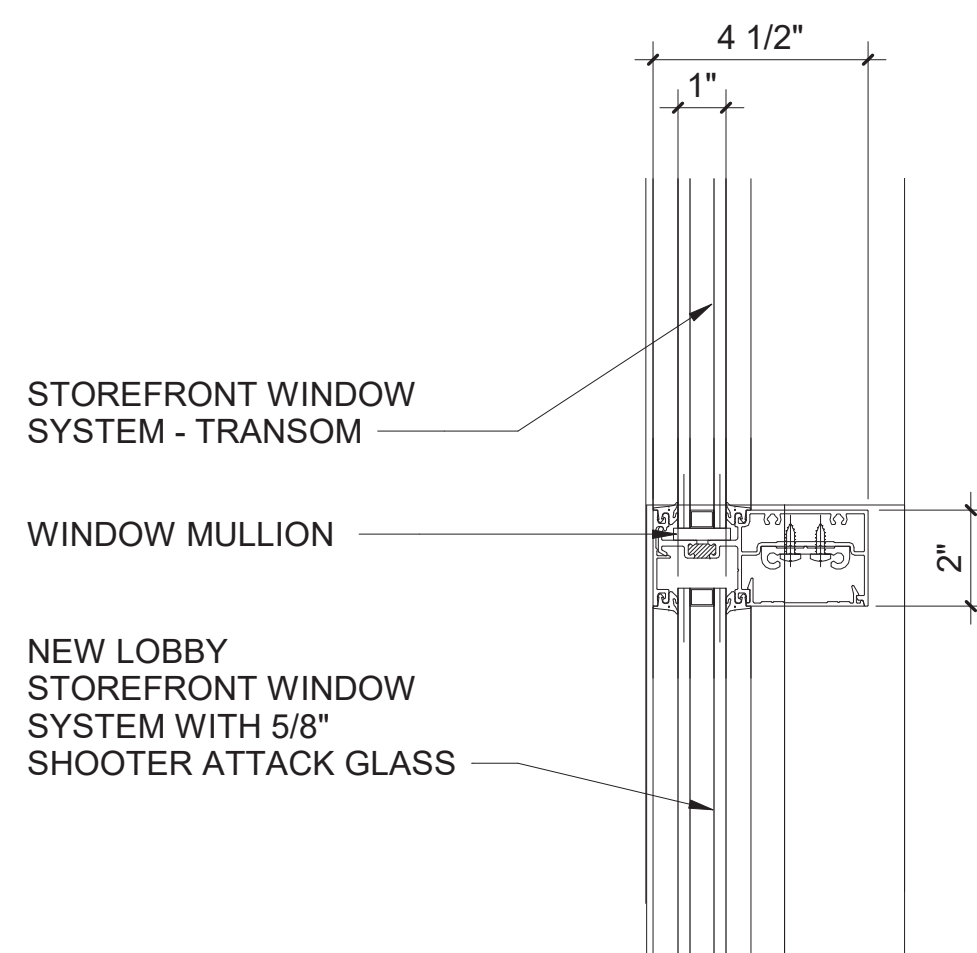
2 Secure Vestibule Door Head and Transom Detail
SCALE: 3" = 1'-0"



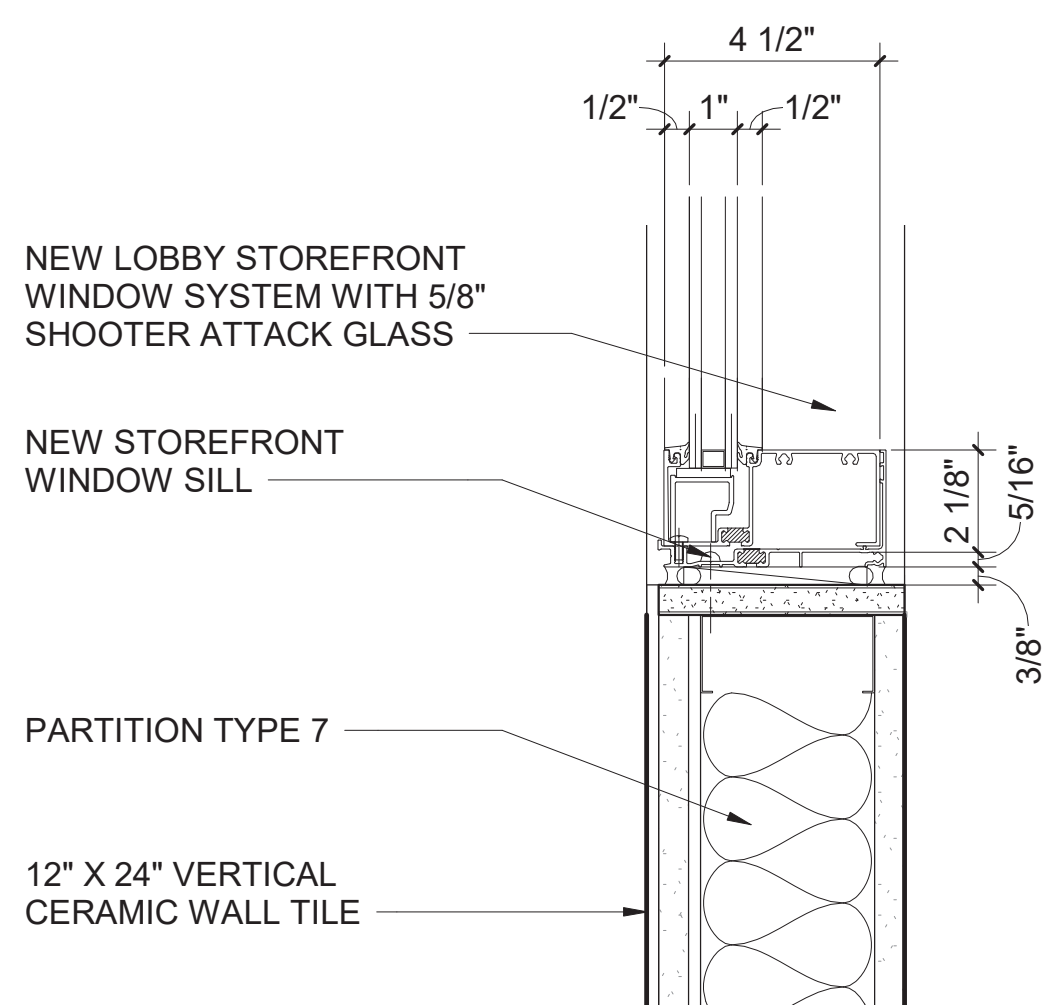
3 Secure Vestibule Door Bottom Rail
SCALE: 3" = 1'-0"



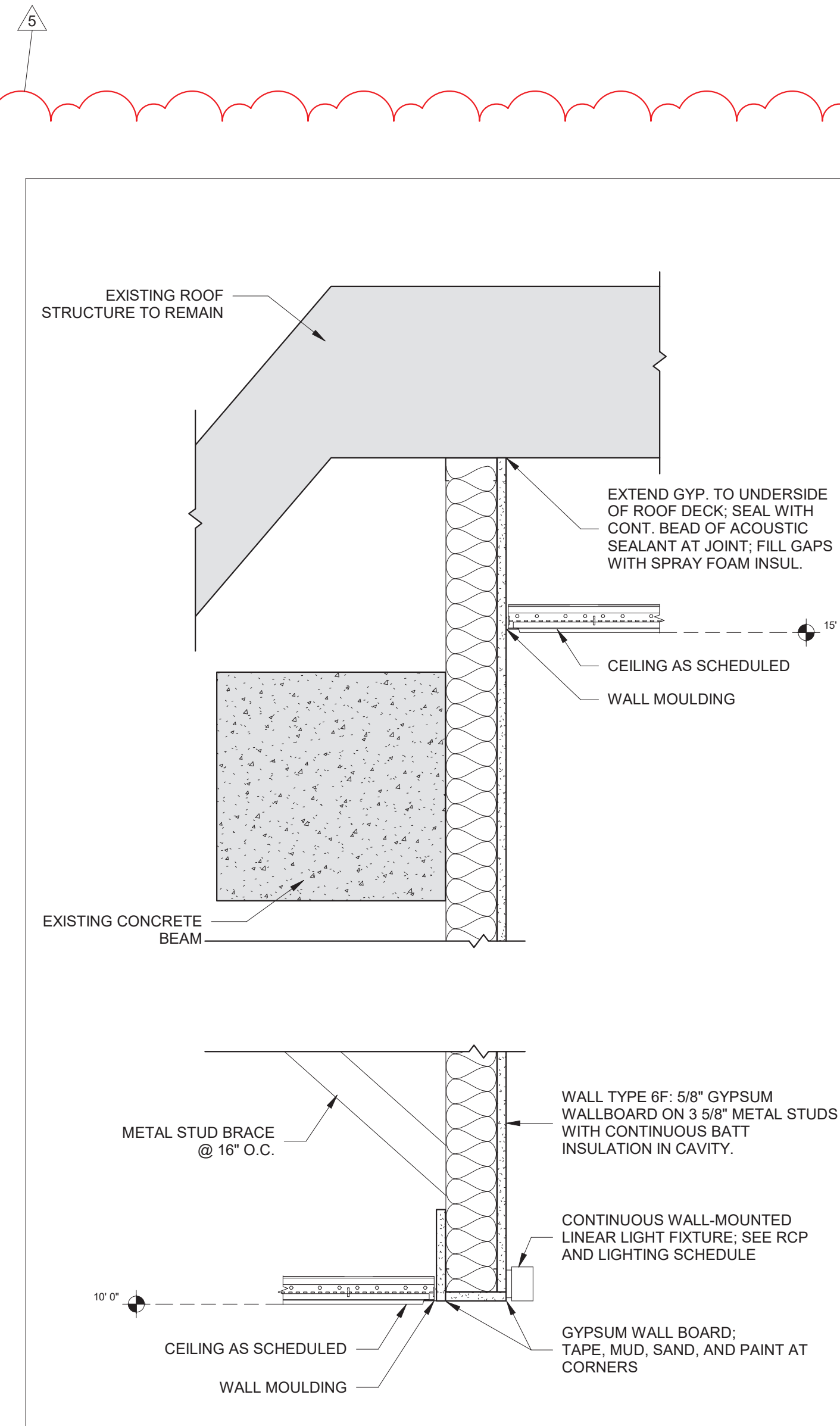
4 Section Detail Through Transaction Window
SCALE: 3" = 1'-0"



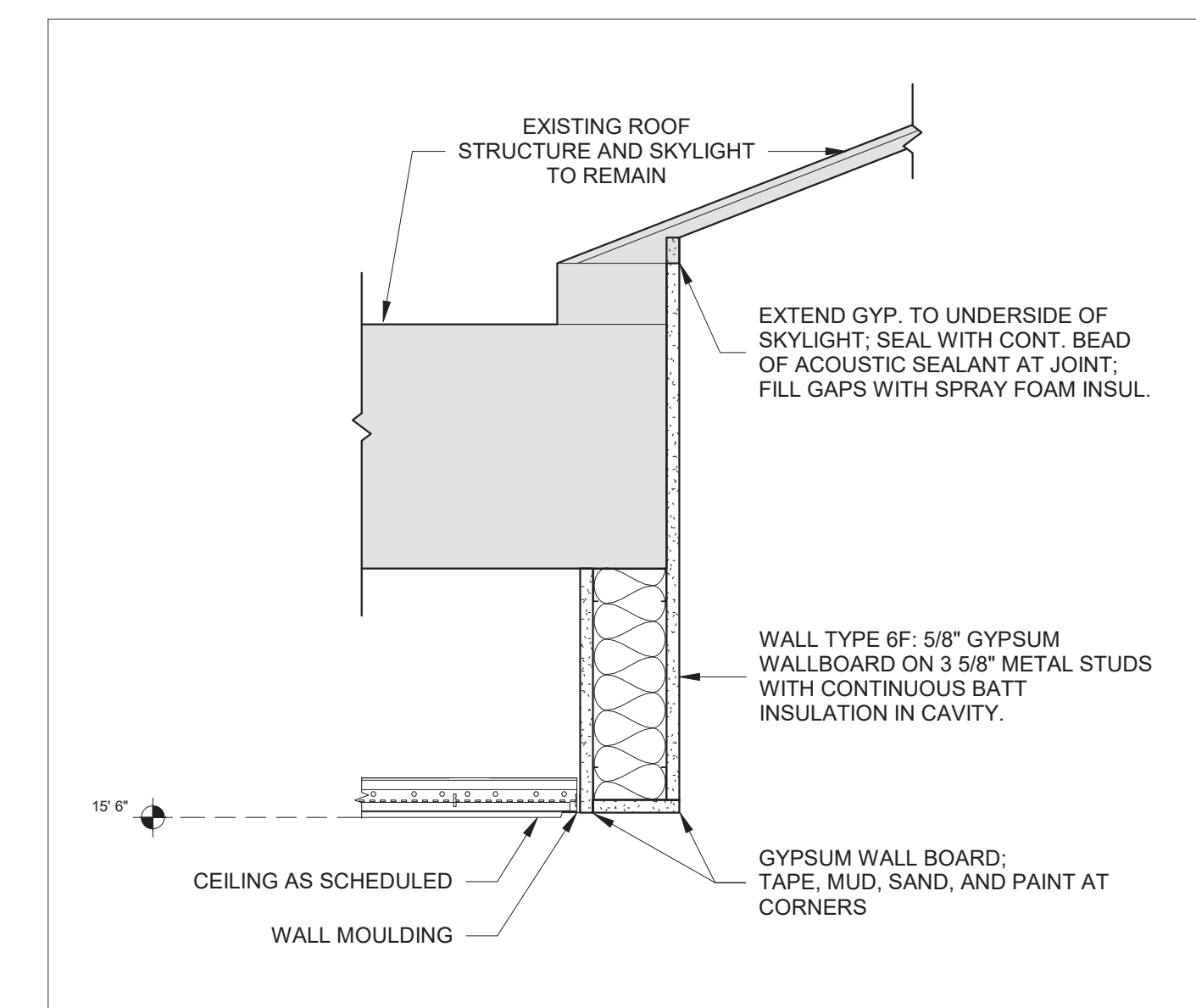
5 Transom Window Connection Detail
SCALE: 3" = 1'-0"



6 Window Sill Detail
SCALE: 3" = 1'-0"



12 Act to Gyp Wall to Gyp/Furring at Beam
SCALE: 1 1/2" = 1'-0"



13 Act to Gyp to Existing Skylight
SCALE: 1 1/2" = 1'-0"

MILTON KEY PLAN
1" = 80'

Revision Schedule		
No.	Description	Date
1	SED SUBMISSION	09-15-2020
3	ISSUED FOR BID	01-19-2021
5	BID ADDENDUM #2	02-05-2021

Geddis
Architects

Architecture. Planning. Interiors

71 Old Post Road
P.O. Box 1020
Southport, CT 06890
(203) 256-8700

Fielding
International

Transforming Education by Design

259 Water Street Suite 1L
Warren, RI 02885 USA
+1 401-289-2789

bga

BARILE GALLAGHER & ASSOCIATES

CONSULTING ENGINEERS
39 MARBLE AVE. PLEASANTVILLE, NY 10570
914.328.6060 GENERAL@BGA-ENG.COM WWW.BGA-ENG.COM

Construction Manager
SAVIN ENGINEERS, P.C.
3 Campus Drive
Pleasantville, NY 10570
914-769-3200

Structural Engineer
ODEH ENGINEERS
1223 Mineral Spring Ave
North Providence, RI 02904
401-724-1771

Civil Engineer
WESTON & SAMPSON
1 Winners Circle, Suite 130
Albany, NY 12205
518-463-4400

Roof Consultant
WATSKY ASSOCIATES INC.
20 Madison Ave
Valhalla, NY 10595
914-948-3450

Acoustic Consultant
DP DESIGN
12 Cold Spring Street
Providence, RI
401-861-3218

AV Consultant
CAVANAUGH TOCCI
327 F Boston Post Road
Sudbury, MA 01776-3027
978-443-7871

SED#: 6618-0001-0002-015

PROJECT

Rye City Schools
555 Theodore Fremd Ave, Suite B-101
Milton Elementary School

12 Hewlett St., Rye, NY 10580

WALL SECTION DETAILS

PROJECT 1

SEAL & SIGNATURE | DATE: 05/12/20
PROJECT No: 9200
DRAWING BY: Author
CHK BY: Checker
DWG No: A2-321