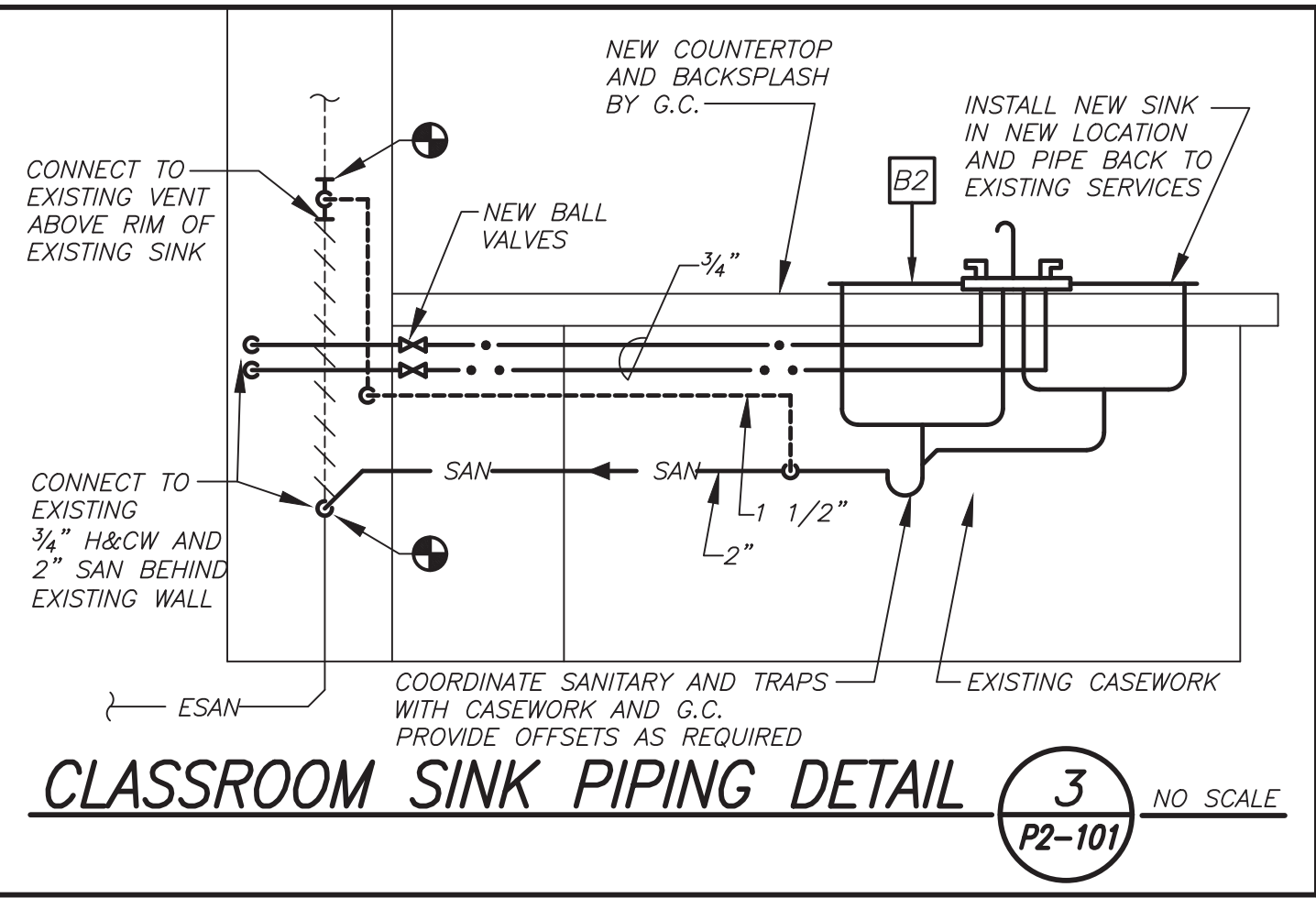


LEGEND		
---	EXISTING PIPING, FIXTURES, ETC. TO REMAIN	
++++	EXISTING PIPING, FIXTURES, ETC. TO BE REMOVED	
---	NEW PIPING, FIXTURES, ETC.	
---	COLD WATER PIPING	
---	HOT WATER PIPING	
---	HOT WATER RETURN PIPING	
---	PLUMBING VENT PIPING	
---	SANITARY PIPING	
== SAN	SANITARY PIPING (UNDERGROUND)	
== ST	STORM PIPING	
== ST	STORM PIPING (UNDERGROUND)	
== G	GAS PIPING	
== EG	EXISTING GAS PIPING	
---	FLOW DIRECTION WITHIN PIPE	
---	CLEANOUT	
---	CLEANOUT DECK PLATE	
---	GATE VALVE	
---	COMBINATION BALANCING & SHUT-OFF VALVE	
---	OS & Y VALVE	
---	CHECK VALVE	
---	GAS SHUT OFF COCK	
---	PIPE CONNS. (BOTTOM; TOP 45 OR 90; PIPE UP)	
---	PLUMBING FIXTURE IDENTIFICATION	
---	POINT OF DISCONNECTION	
---	POINT OF CONNECTION, NEW TO EXISTING	
P.C.	PLUMBING CONTRACTOR	
G.C.	GENERAL CONTRACTOR	
HVAC	HVAC CONTRACTOR	
VTR	VENT THRU ROOF	
FAI	FRESH AIR INTAKE	
FD	FLOOR DRAIN	
PRV	PRESSURE REDUCING VALVE	
---	PART PLAN, DETAIL, SECTION NUMBER	
---	DRAWING NUMBER	
---	SECTION IDENTIFICATION	

PLUMBING FIXTURE SCHEDULE				
MARK	DESCRIPTION	W	BRANCH SIZE	C
A1	WALL MOUNTED WATER CLOSET	4"	2"	1"
A2	WALL MOUNTED WATER CLOSET (HANDICAPPED)	4"	2"	1"
B1	SINGLE WALL MOUNTED LAVATORY (HANDICAPPED)	2"	1-1/2"	3/4"
B2	COUNTERTOP STAINLESS STEEL SINK	2"	1-1/2"	3/4"
B3	TRIPLE WALL MOUNTED LAVATORY (HANDICAPPED)	2"	1-1/2"	3/4"
B4	MAKER SPACE/LIBRARY SINK	2"	1-1/2"	3/4"
B5	MUSIC ROOM SINK	2"	1-1/2"	3/4"
C	URINAL	3"	2"	3/4"
D	JANITOR'S SINK	3"	2"	3/4"
E	SELF CONTAINED EYE WASH	-	-	-
R	EXISTING FIXTURE TO REMAIN	-	-	-
X	EXISTING FIXTURE TO BE REMOVED	-	-	-

- ### REMOVAL NOTES
- REMOVE ALL PLUMBING FIXTURES, EQUIPMENT, SPECIALTIES, DRAINS, CONTROLS, HANGERS, BASES, SUPPORTS, PIPING, VALVES, TUBING AND PLUMBING ACCESSORIES THAT ARE NOT INCORPORATED IN THE NEW LAYOUT.
 - WHERE REMOVAL IS INDICATED OR IMPLIED OR NOT INCORPORATED IN THE NEW LAYOUT, THE ITEM ITSELF IS TO BE REMOVED COMPLETELY TOGETHER WITH ALL CONNECTING PIPING, SPECIALTIES, SUPPORTS, CONTROLS, ETC. CONNECTING PIPING IS TO BE REMOVED BACK TO MAINS WHERE THEY ARE TO BE CAPPED OR DISCONNECTED. THIS INCLUDES ALL GAS, SANITARY, VENT, WATER, ACID WASTE AND PUMP DISCHARGE PIPING. REFER TO DIVISION 1 OF SPECIFICATION FOR CUTTING AND PATCHING REQUIREMENTS.
 - WHERE EXISTING PIPING ENTERS INACCESSIBLE TRENCHES, TUNNELS, SHAFTS, WALLS AND CEILINGS INSIDE THE EXISTING BUILDING, IT SHALL BE CUT BACK AT LEAST 2" INTO SUCH INACCESSIBLE SPACES AND SHALL BE SUITABLY CAPPED AND SEALED BY THE CONTRACTOR.
 - THE CONTRACTOR SHALL EXERCISE NORMAL CAUTION TO PREVENT UNNECESSARY CUTTING AND DAMAGE TO THE EXISTING BUILDING. ANY EXCESSIVE DAMAGE AS DETERMINED BY THE OWNER SHALL BE REPAIRED AND PAID FOR BY THE CONTRACTOR CAUSING THE DAMAGE.
 - ALL DEMOLISHED EQUIPMENT ETC. EXCEPT THOSE ITEMS SPECIFICALLY REQUESTED BY THE OWNER SHALL BECOME THE CONTRACTORS PROPERTY, SHALL BE REMOVED FROM THE PREMISES, AND DISPOSED OF LEGALLY.



Revision Schedule

No.	Description	Date
1	SED Submission	09/15/2020
2	SED Submission Addendum#1	01/08/2021
3	ISSUED FOR BID	01/19/2021

Geddis Architects

Architecture. Planning. Interiors

71 Old Post Road
P.O. Box 1020
Southport, CT 06890
(203) 256-8700

Fielding International

Transforming Education by Design

259 Water Street Suite 1L
Warren, RI 02885 USA
+1 401-289-2789

bga

BARILE GALLAGHER & ASSOCIATES

CONSULTING ENGINEERS

39 MARBLE AVE. PLEASANTVILLE, NY 10570
914.328.9000 GENERAL@BGA-ENG.COM www.BGA-ENG.COM

Construction Manager
SAVIN ENGINEERS, P.C.
3 Campus Drive
Pleasantville, NY 10570
914-769-3200

Structural Engineer
ODEH ENGINEERS
1223 Mineral Spring Ave
North Providence, RI 02904
401-724-1771

Civil Engineer
WESTON & SAMPSON
1 Winners Circle, Suite 130
Albany, NY 12205
518-463-4400

Acoustic Consultant
DP DESIGN
12 Cold Spring Street
Providence, RI
401-861-3218

SED#: 6618-0001-0003-025

PROJECT

Rye City Schools

555 Theodore Fremd Ave, Suite B-101

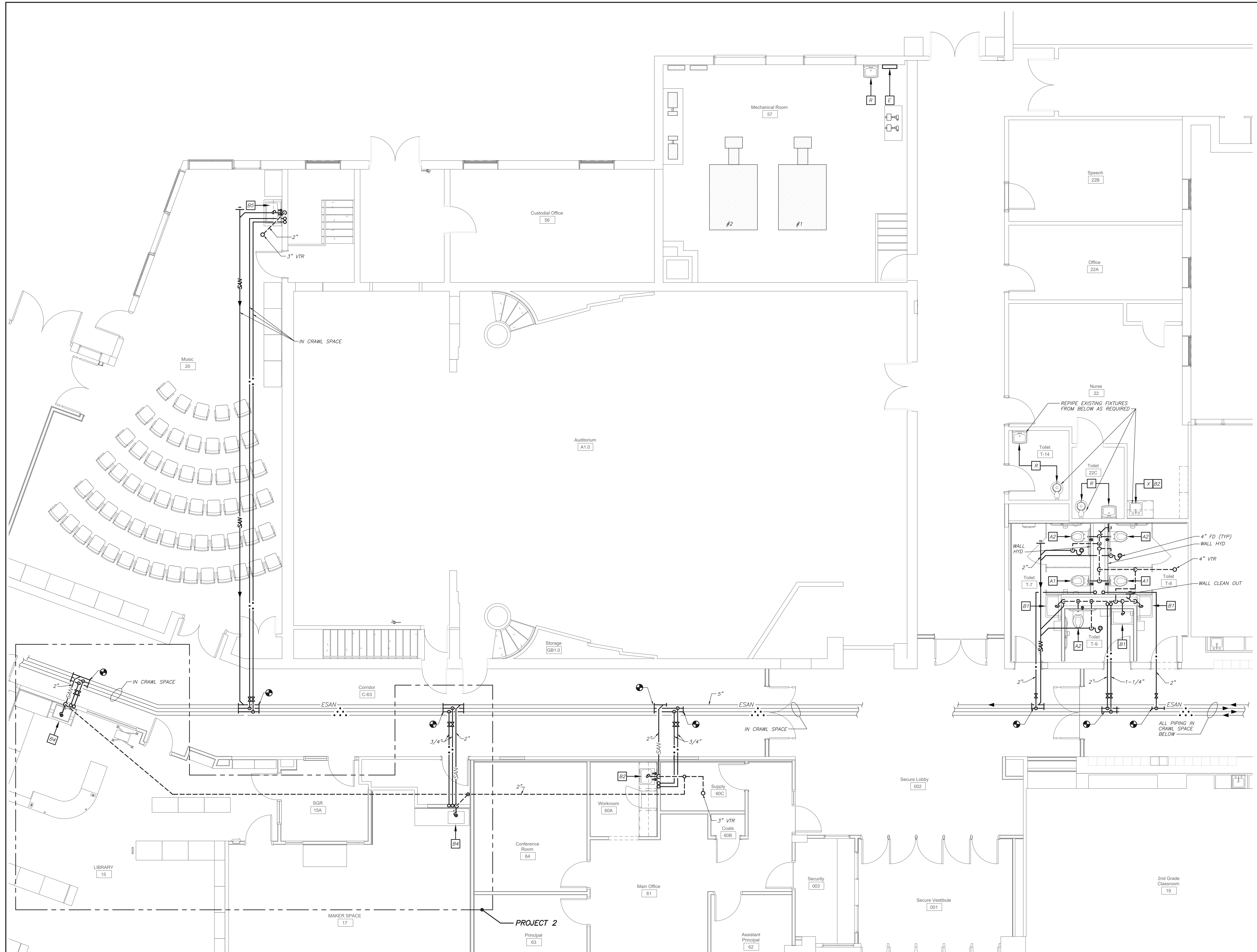
Midland Elementary School

312 Midland Ave, Rye NY 10580

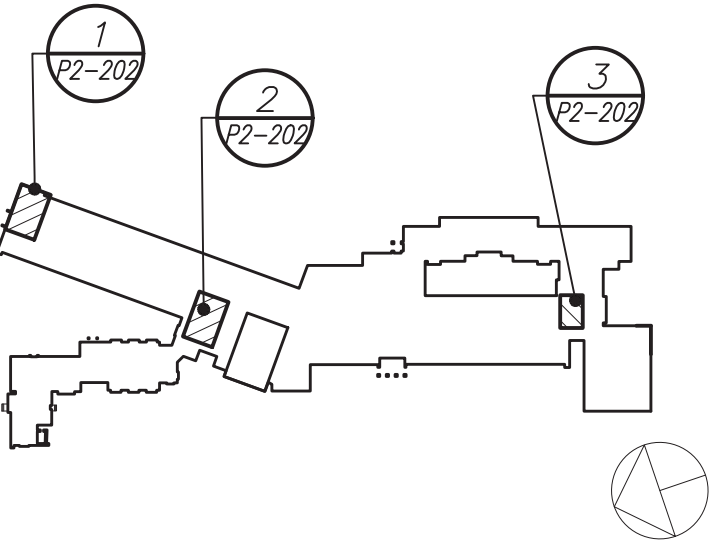
LEGEND, SCHEDULE, NOTES, DETAIL AND FIRST FLOOR PLANS

PROJECT 1 & 4

SEAL & SIGNATURE DATE: 12/18/19
PROJECT No: 9200
DRAWING BY: BGA
CHK BY: BGA
DWG No: P2-101



Revision Schedule		
No.	Description	Date
1	SED Submission	09/15/2020
2	SED Submission Addendum#1	01/08/2021
3	ISSUED FOR BID	01/19/2021



Geddis Architects

Architecture. Planning. Interiors

71 Old Post Road
P.O. Box 1020
Southport, CT 06890
(203) 256-8700

Fielding International

Transforming Education by Design

259 Water Street Suite 1L
Warren, RI 02885 USA
+1 401-289-2789

bga

BARILE GALLAGHER & ASSOCIATES

CONSULTING ENGINEERS

39 MARBLE AVE. PLEASANTVILLE, NY 10570
914.328.9066 GENERAL@BGA-ENG.COM WWW.BGA-ENG.COM

Construction Manager
SAVIN ENGINEERS, P.C.
3 Campus Drive
Pleasantville, NY 10570
914-769-3200

Structural Engineer
ODEH ENGINEERS
1223 Mineral Spring Ave
North Providence, RI 02904
401-724-1771

Civil Engineer
WESTON & SAMPSON
1 Winners Circle, Suite 130
Albany, NY 12205
518-463-4400

Acoustic Consultant
DP DESIGN
12 Cold Spring Street
Providence, RI
401-861-3218

SED#: 6618-0001-0003-025

PROJECT

Rye City Schools

555 Theodore Fremd Ave, Suite B-101

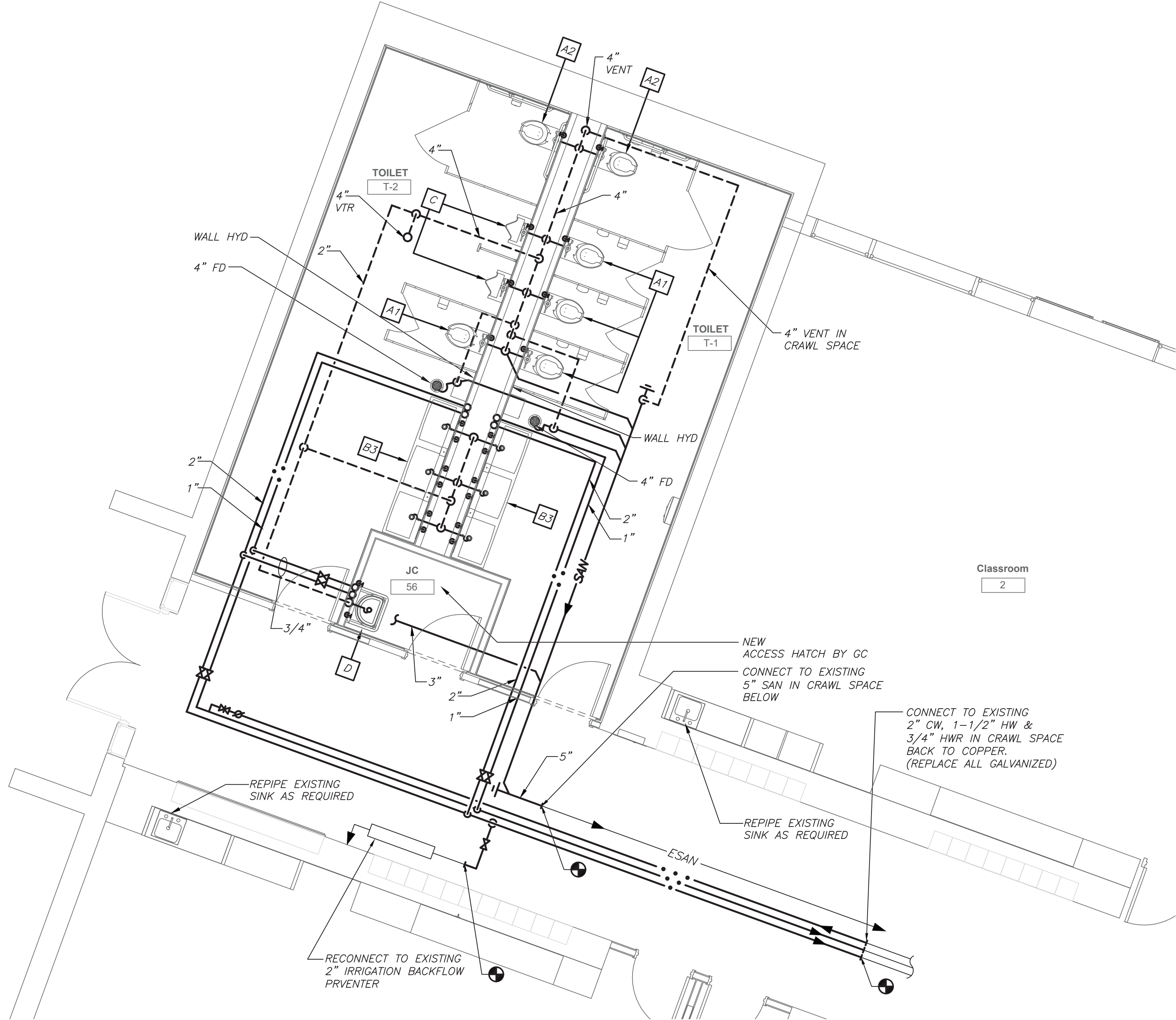
Midland Elementary School

312 Midland Ave, Rye NY 10580

PART FIRST FLOOR PLANS

PROJECT 1

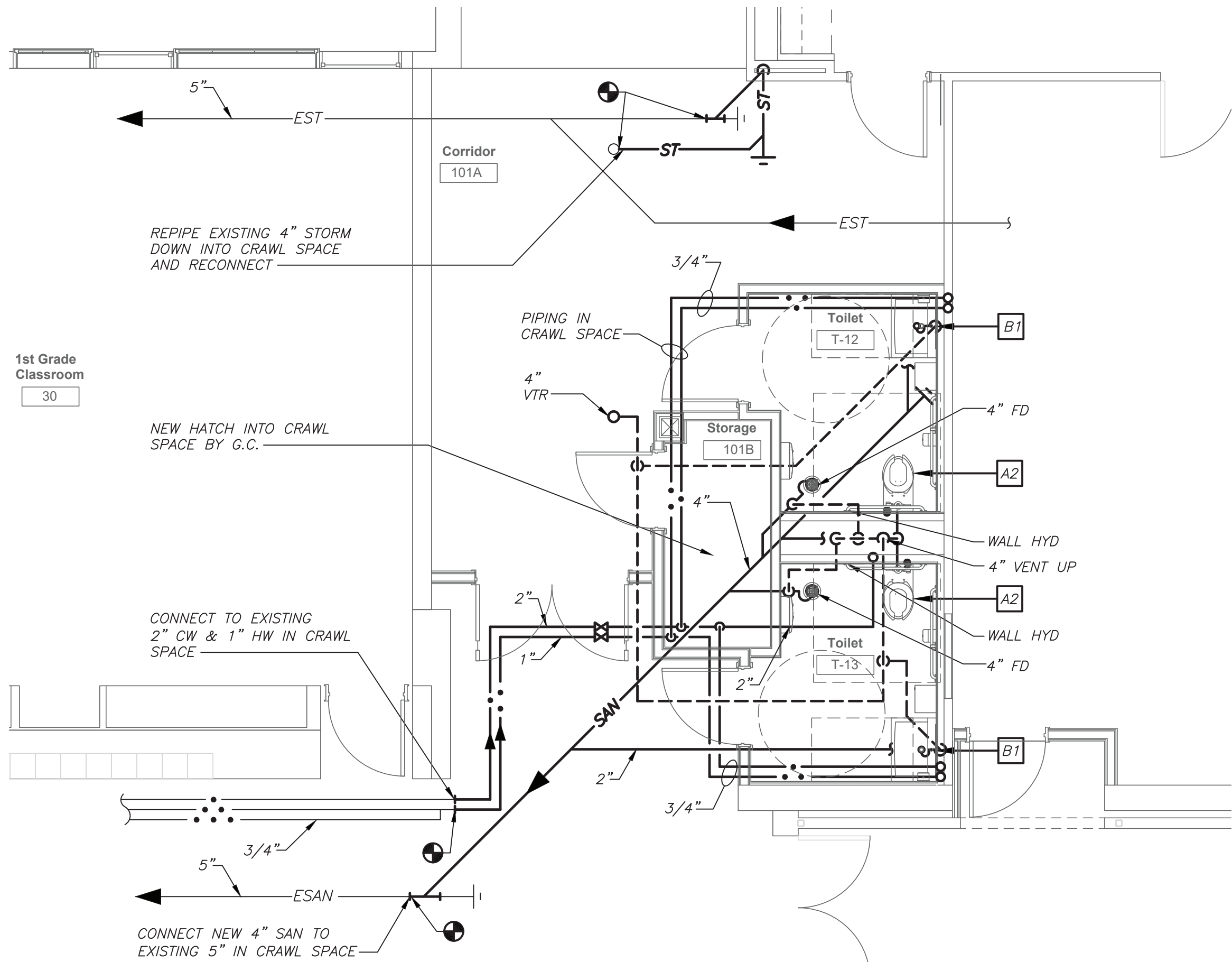
SEAL & SIGNATURE DATE: 12/18/19
PROJECT No: 9200
DRAWING BY: BGA
CHK BY: BGA
DWG No: P2-202



PART FIRST FLOOR PLAN
(NEW WORK) (PROJECT 1)



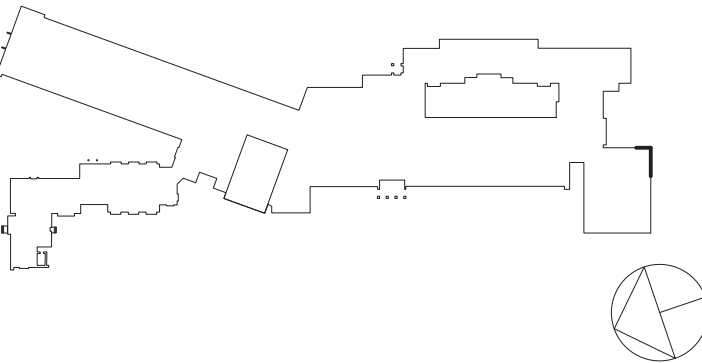
PART FIRST FLOOR PLAN
(NEW WORK) (PROJECT 1)



PART FIRST FLOOR PLAN
(NEW WORK) (PROJECT 1)

BEFORE FABRICATION THIS CONTRACTOR SHALL VERIFY ALL MEASUREMENTS AND CONDITIONS ON JOB AND COORDINATE HIS WORK WITH THE WORK OF ALL OTHER CONTRACTORS

Revision Schedule		
No.	Description	Date
1	SED Submission	09/15/2020
2	SED Submission Addendum#1	01/08/2021
3	ISSUED FOR BID	01/19/2021



Geddis Architects
Architecture. Planning. Interiors
71 Old Post Road
P.O. Box 1020
Southport, CT 06890
(203) 256-8700

Fielding International
Transforming Education by Design
259 Water Street Suite 1L
Warren, RI 02885 USA
+1 401-289-2789

bga
BARILE GALLAGHER & ASSOCIATES
CONSULTING ENGINEERS
39 MARBLE AVE. PLEASANTVILLE, NY 10570
914.328.9060 GENERAL@BGA-ENG.COM WWW.BGA-ENG.COM

Construction Manager
SAVIN ENGINEERS, P.C.
3 Campus Drive
Pleasantville, NY 10570
914-769-3200

Structural Engineer
ODEH ENGINEERS
1223 Mineral Spring Ave
North Providence, RI 02904
401-724-1771

Civil Engineer
WESTON & SAMPSON
1 Winners Circle, Suite 130
Albany, NY 12205
518-463-4400

Acoustic Consultant
DP DESIGN
12 Cold Spring Street
Providence, RI
401-861-3218

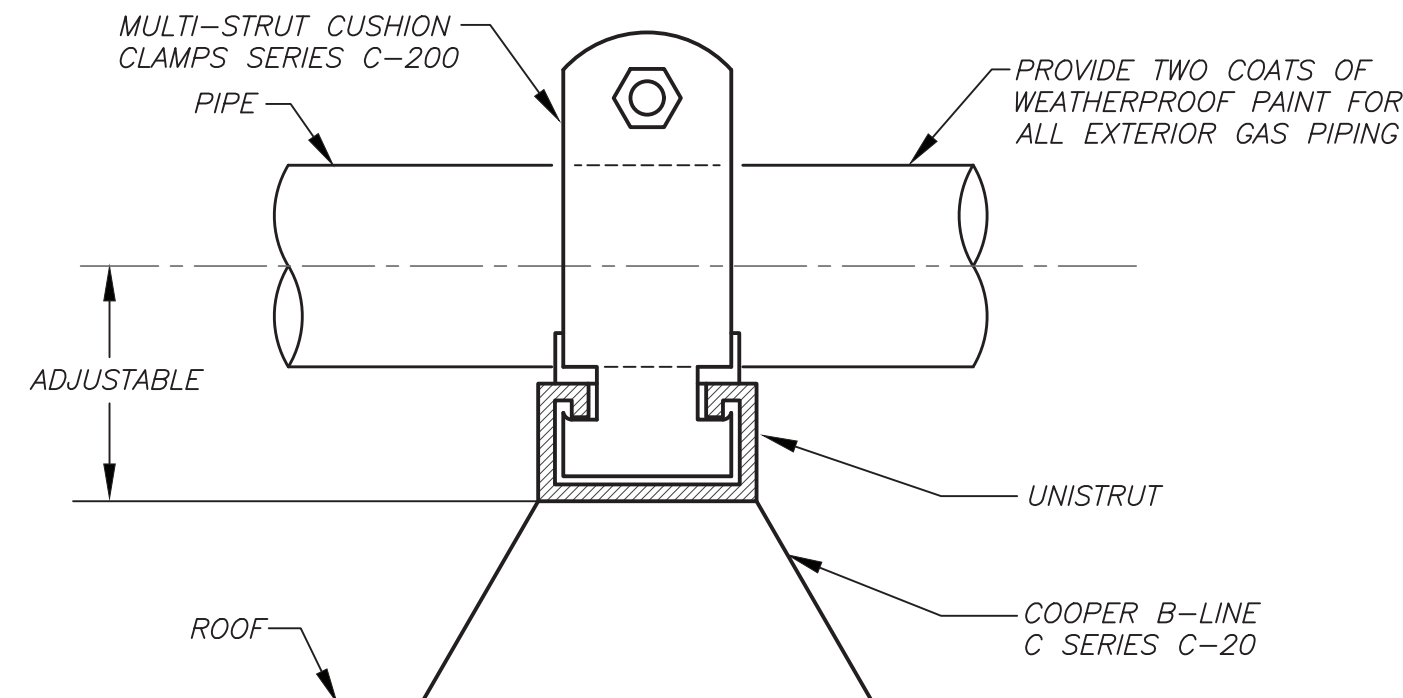
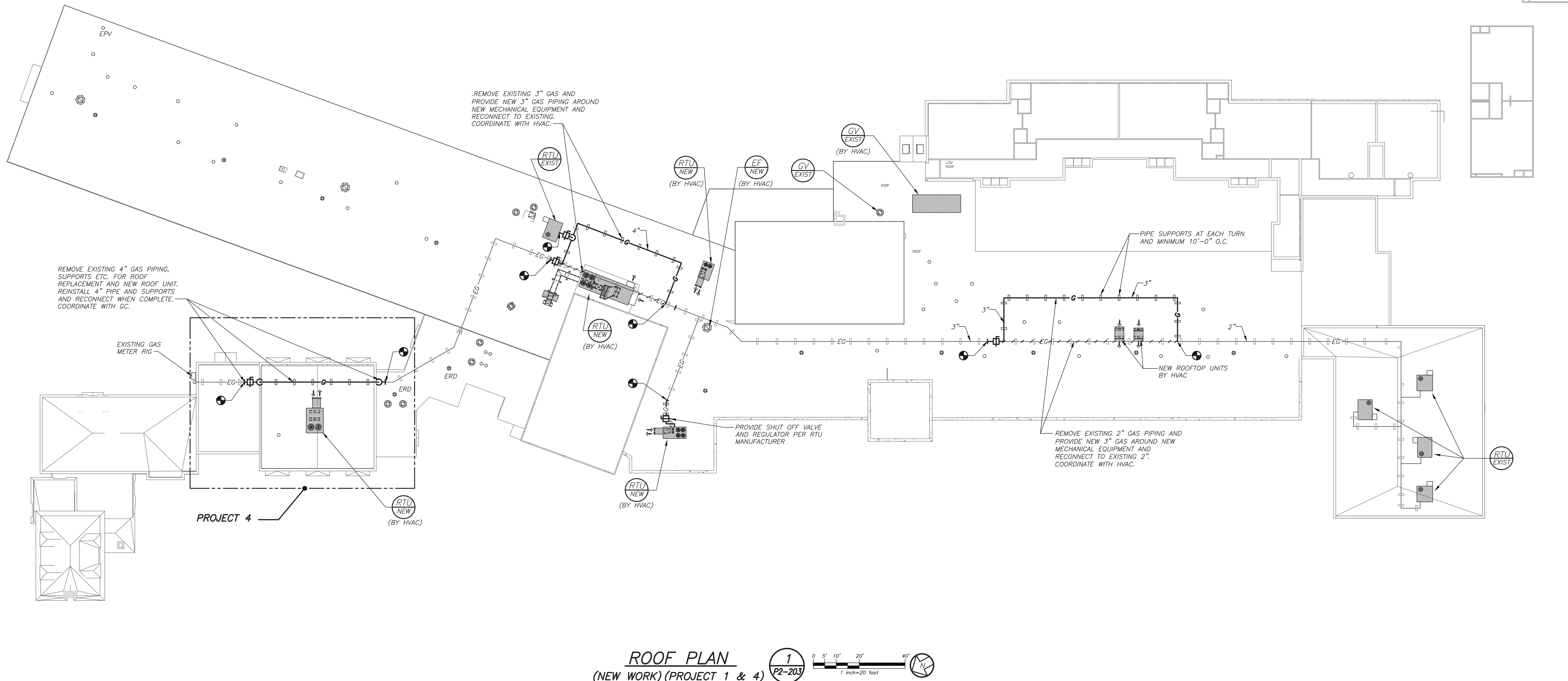
SED#: 6618-0001-0003-025

PROJECT
Rye City Schools
555 Theodore Fremd Ave, Suite B-101
Midland Elementary School

312 Midland Ave, Rye NY 10580

ROOF PLAN
PROJECT 1 & 4

SEAL & SIGNATURE	DATE:	12/18/19
	PROJECT No:	9200
	DRAWING BY:	BGA
	CHK BY:	BGA
DWG No:		P2-203



PIPING SUPPORT AT ROOF DETAIL
2
P2-203
NO SCALE

BEFORE FABRICATION THIS CONTRACTOR SHALL VERIFY ALL MEASUREMENTS AND CONDITIONS ON JOB AND COORDINATE HIS WORK WITH THE WORK OF ALL OTHER CONTRACTORS