



*Restaurant Depot / BREWSTER, NY*

BREWSTER, NY 10509

ROAD (LOT 48 | BLOCK 0002)

THESE DOCUMENTS CONTAIN INFORMATION PROPRIETARY TO ADA ARCHITECTS, INC.

BR

## REVISIONS

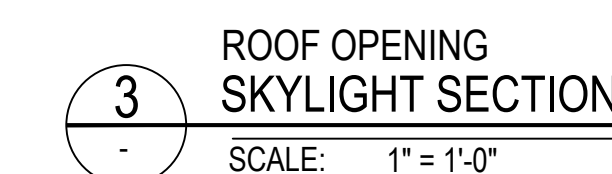
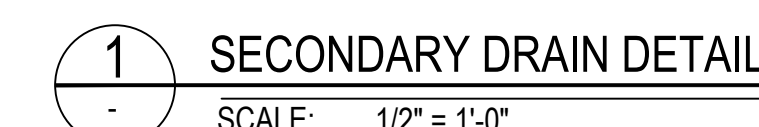
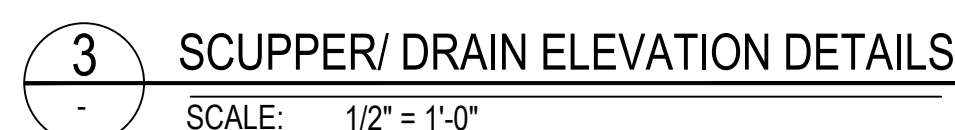
#	DATE	TYPE
1		
2		
3		
4		
5		
6		
7		
8		
9		

ROOF PLAN

DATE: 9/10/2020

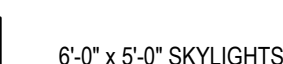
JOB NO.	19230
---------	-------

A-3.2  
SHEET NO.



- NOTES:**
1. SEE APPLICABLE MEPPS DRAWINGS FOR ADDITIONAL INFORMATION.
  2. VERIFY ALL SKYLIGHTS ARE CENTERED ON JOIST SPACING PRIOR TO FIELD CUTTING.
  3. HVAC RTU LOCATIONS TO BE COORDINATED WITH MECHANICAL CONTRACTOR TO ENSURE DUCT TRANSITION AND CONCENTRIC DIFFUSERS FIT BETWEEN STRUCTURAL MEMBERS
  4. SEE PLUMBING ROOF PLAN FOR DETAILS AND CALCULATIONS.
  5. ANY NEW ROOF DRAINAGE CONSTRUCTION TO BE COORDINATED W/ ARCHITECT AND MEP.
  6. RTU DETAILS ARE DIAGRAMMATIC AND SHALL BE COORDINATED W/ PROPER DRAWINGS, THE GENERAL CONTRACTOR SHALL NOTIFY THE ARCHITECT OF ANY VARIANCE WITH CONDITIONS IN THE FIELD.

### LEGEND



RTU: SEE MECHANICAL DRAWING  
FOR MORE INFORMATION