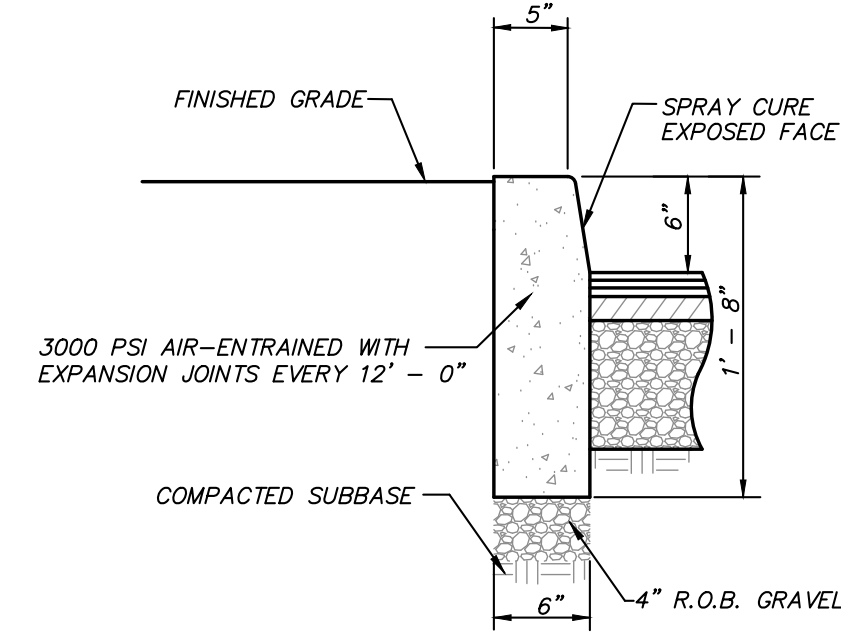
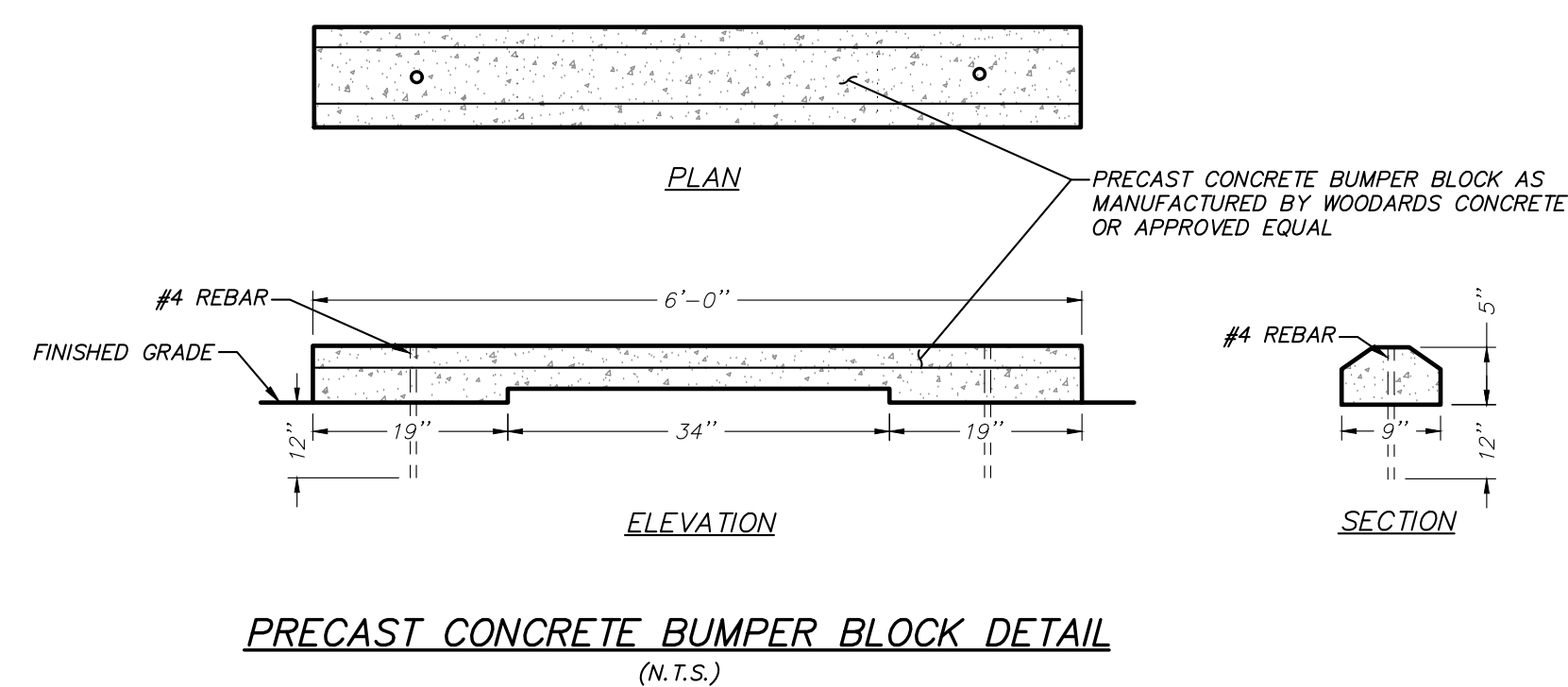
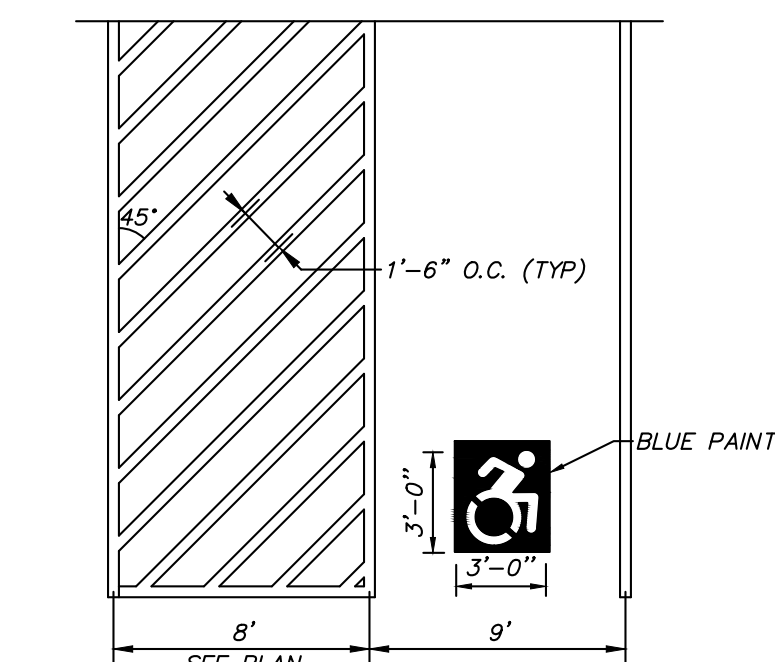
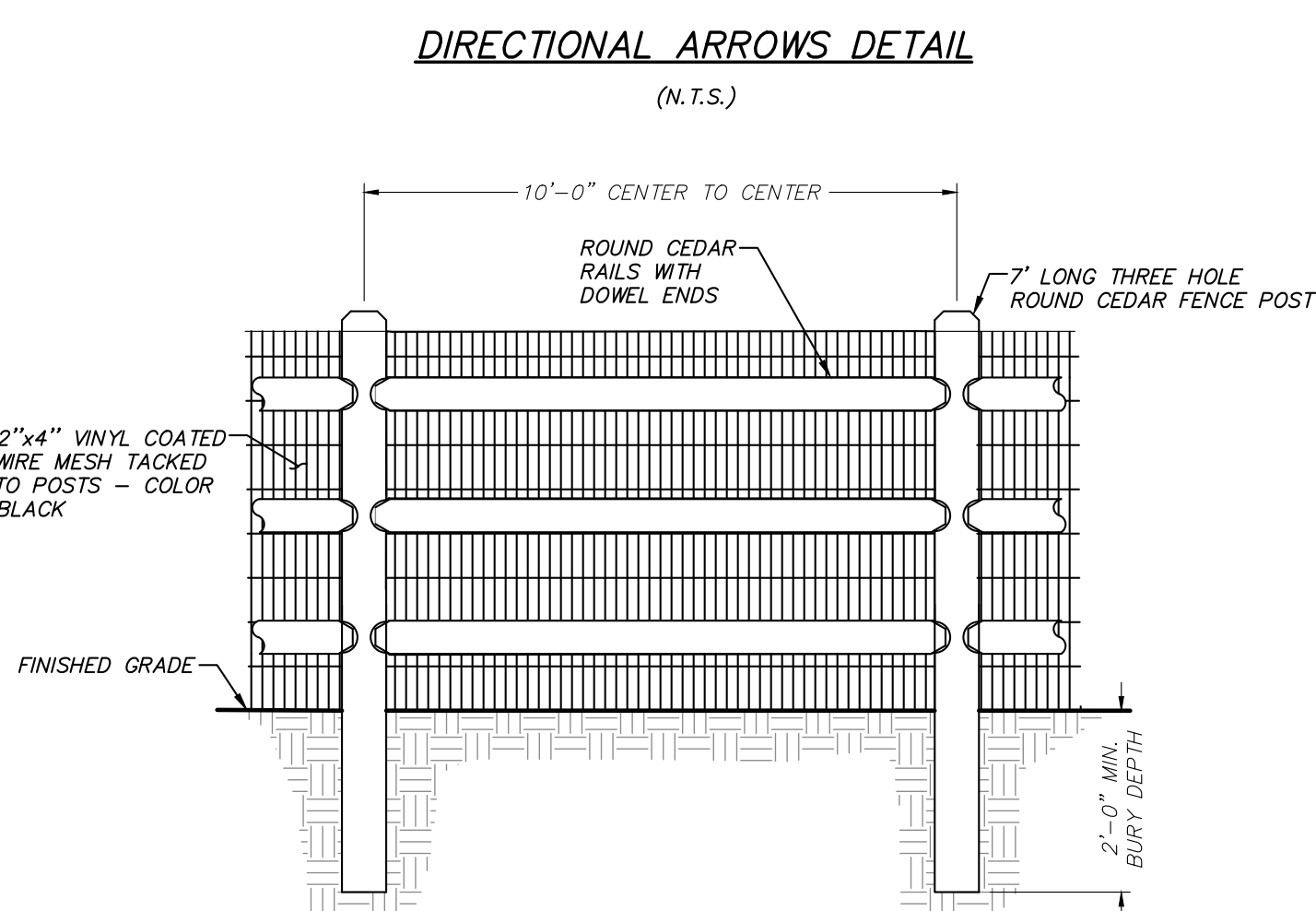


#### TRUNCATED DOME DETECTABLE WARNING FIELD NOTES:

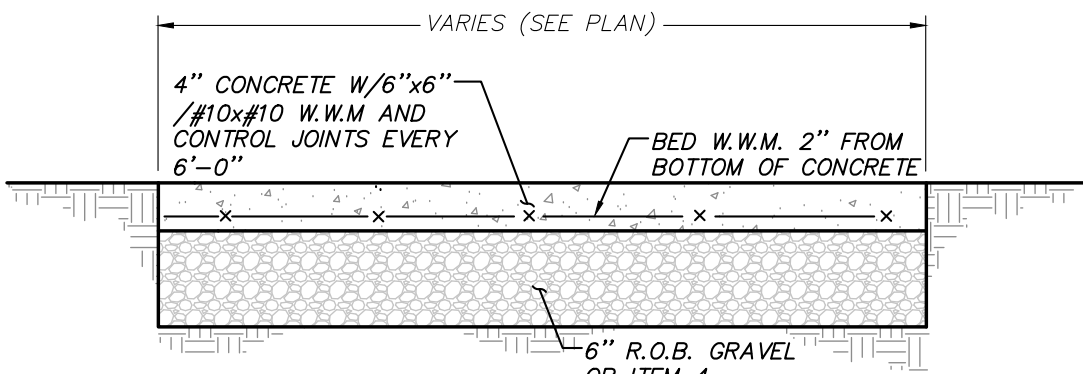
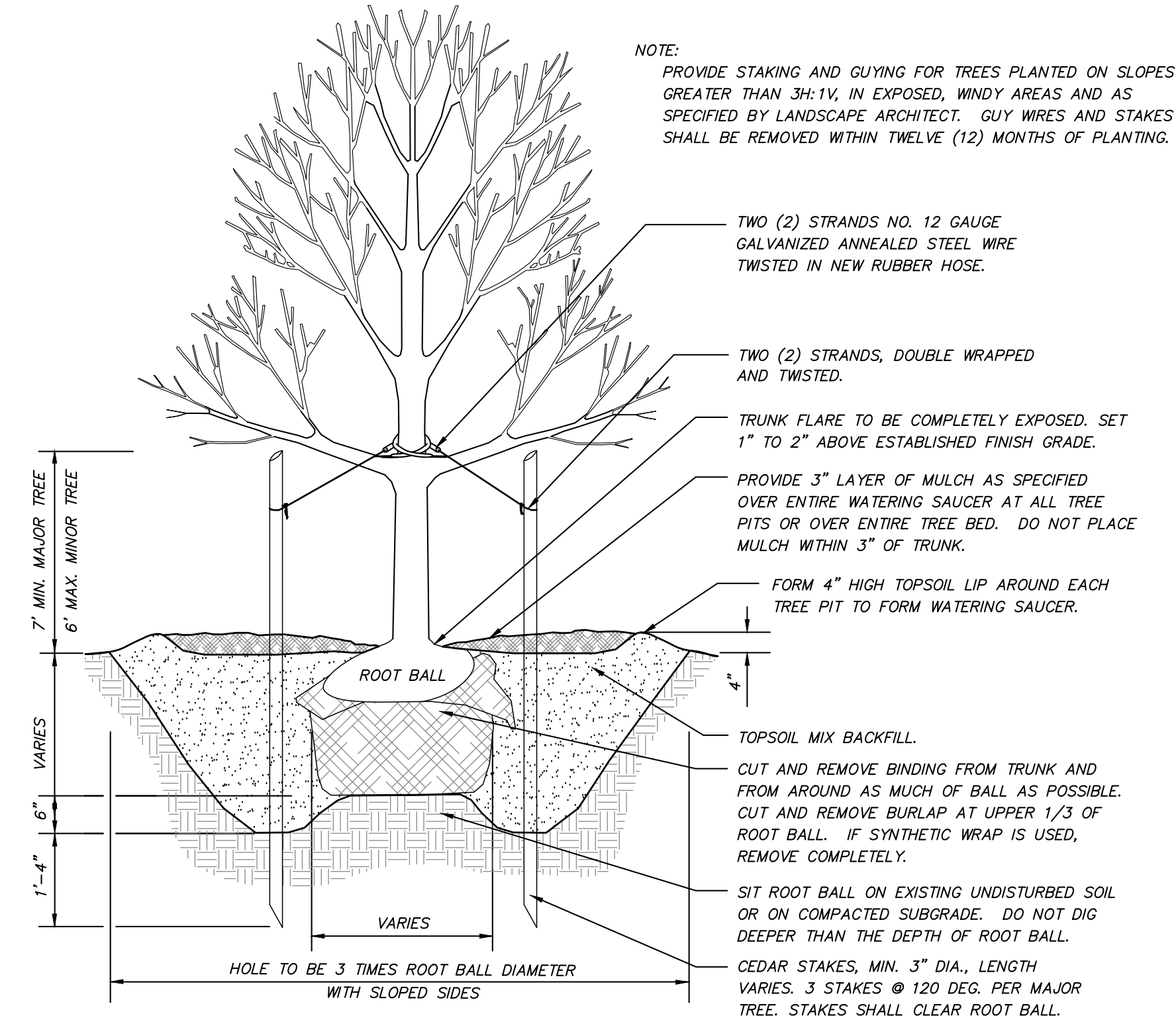
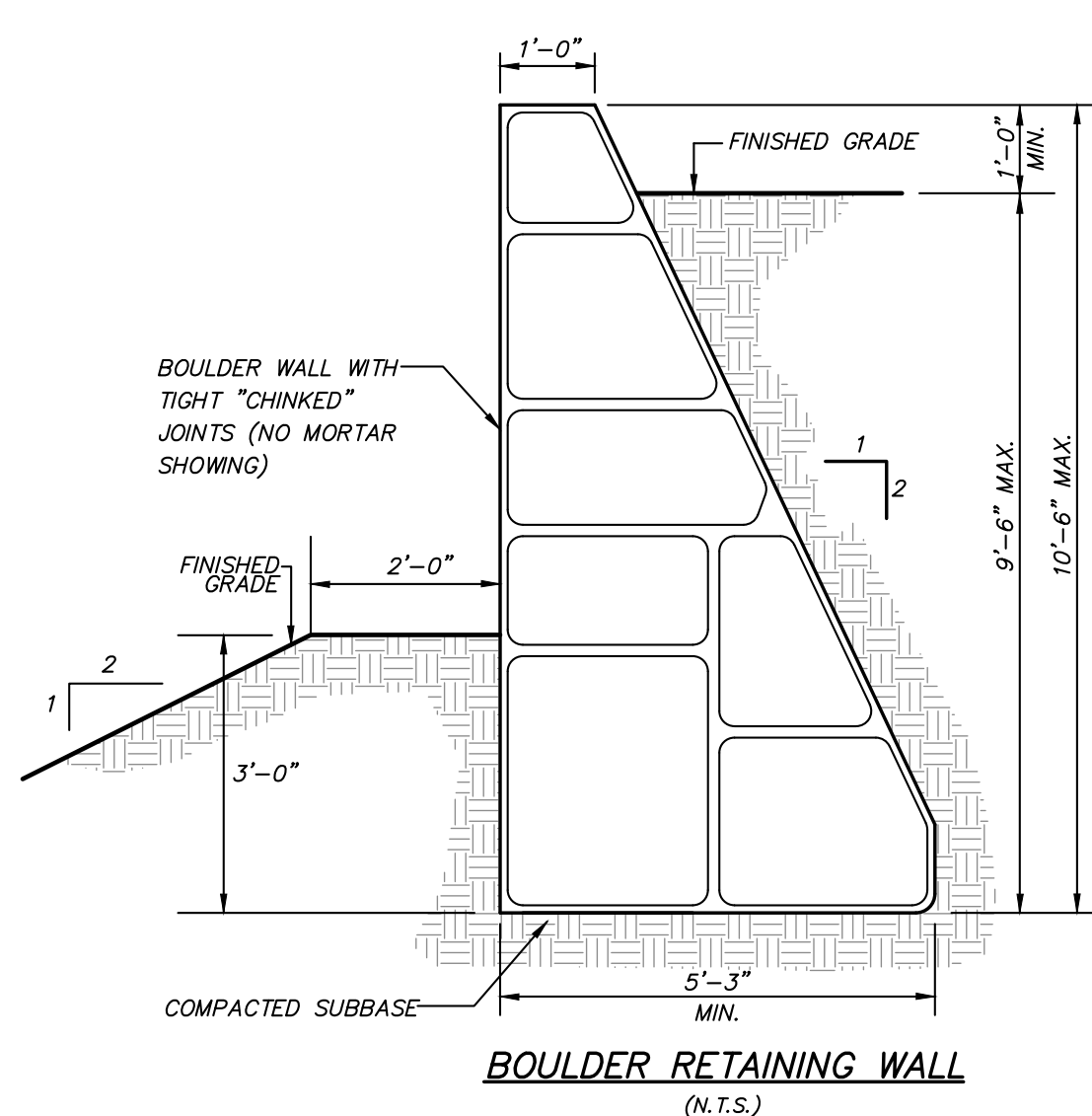
1. The detectable warning field shall consist of raised truncated domes with a nominal diameter of 0.9 inches, a nominal height of 0.2 inches, and a nominal spacing of 2.35 inches on center in accordance with the Department of Justice-Code of Federal Regulations, 28 CFR Part 36, Chapter 4 "ADA Standards for Accessible Design", revised as of July 1, 1994.
2. The details provided are not drawn to scale. The quantity of domes depicted on the detectable warning field (the domes and the entire 24 inch level surface) is for illustration only.
3. The size of the detectable warning field shall be 24 inches in the direction of travel and shall extend the full width of the curb ramp or flush surface, exclusive of side flows.
4. Detectable warnings shall be located so that the edge of the warning field nearest to the roadway or street surface is 6 inches to 9 inches from the edge of the roadway/street, or from the front of the dropped curb, where a dropped curb continues across the bottom of the sidewalk curb ramp.
5. Domes shall be aligned on a square grid in the predominant direction of travel.
6. The detectable warning field shall be yellow.



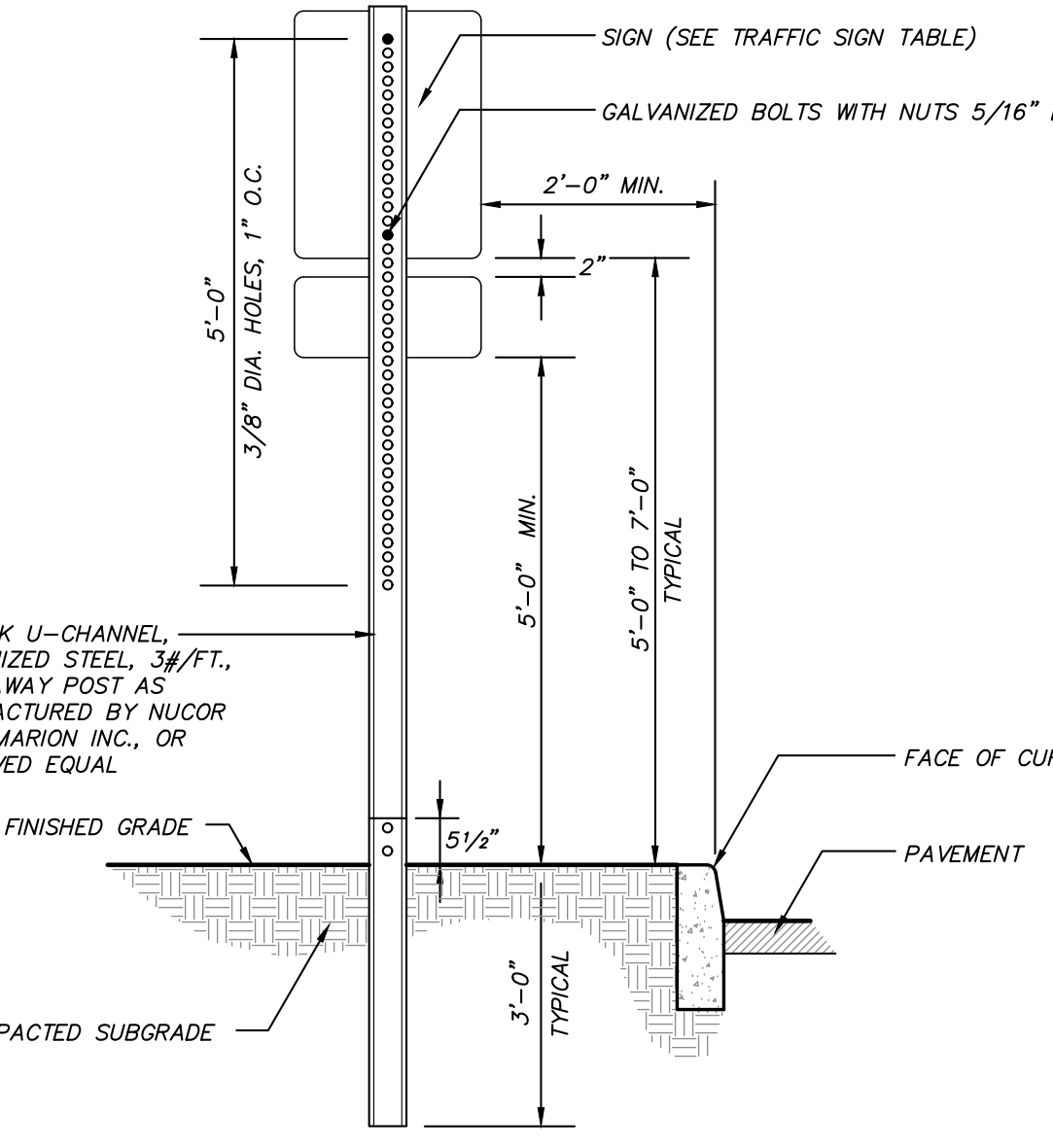
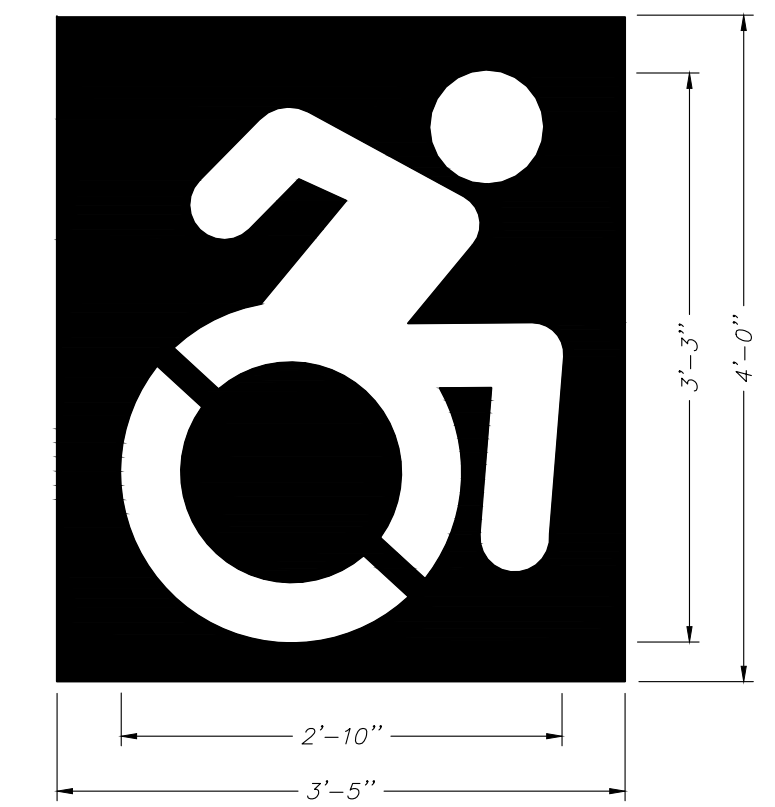
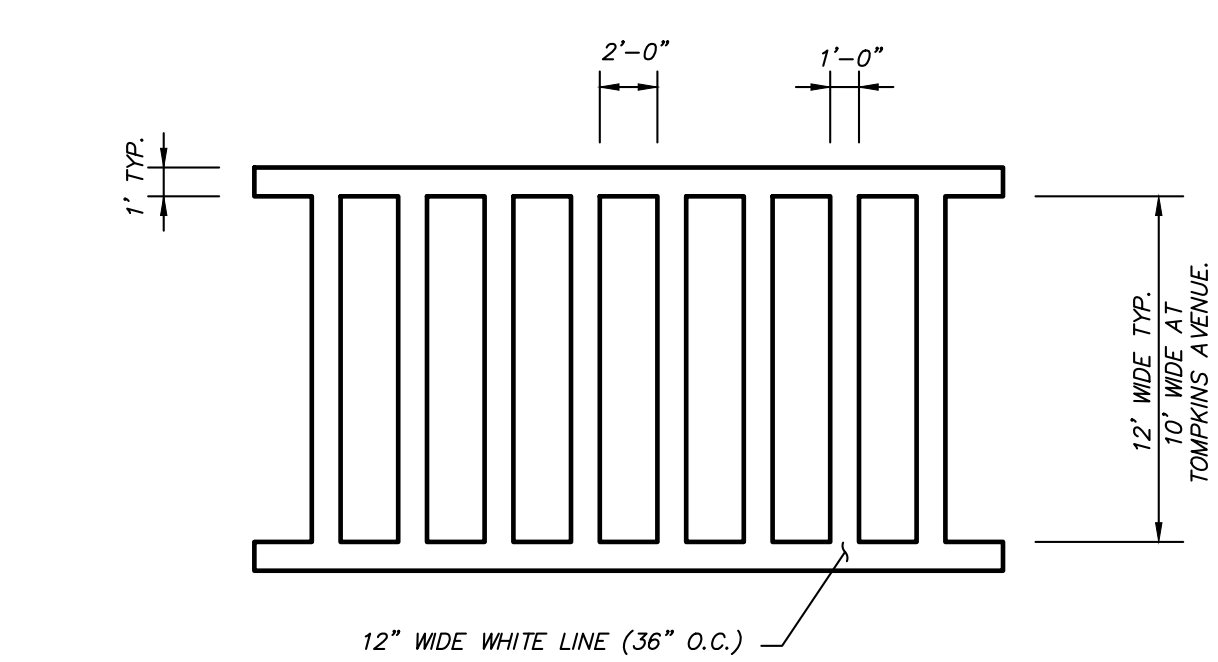
#### DIRECTIONAL ARROWS DETAIL (N.T.S.)



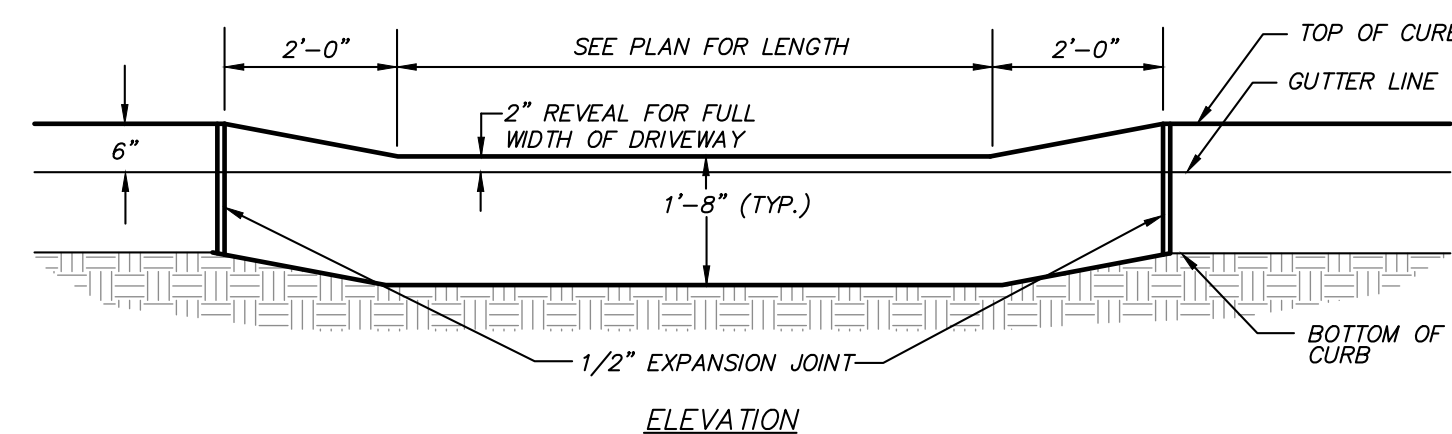
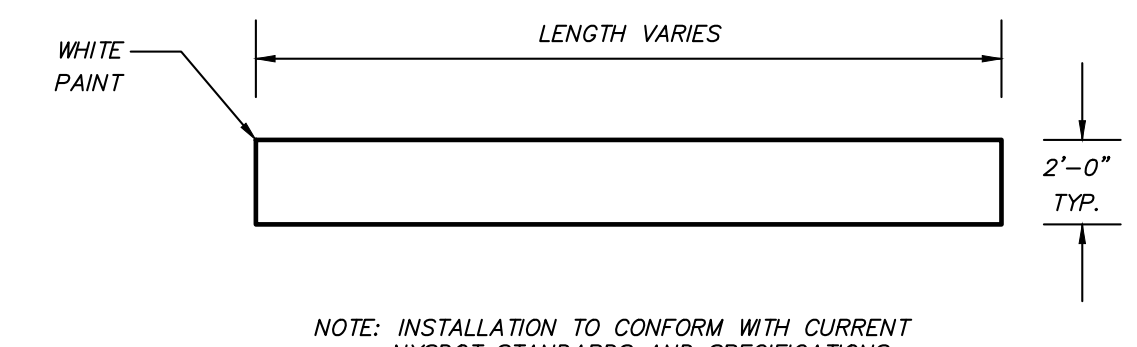
#### TRUNCATED DOME DETAIL (N.T.S.)



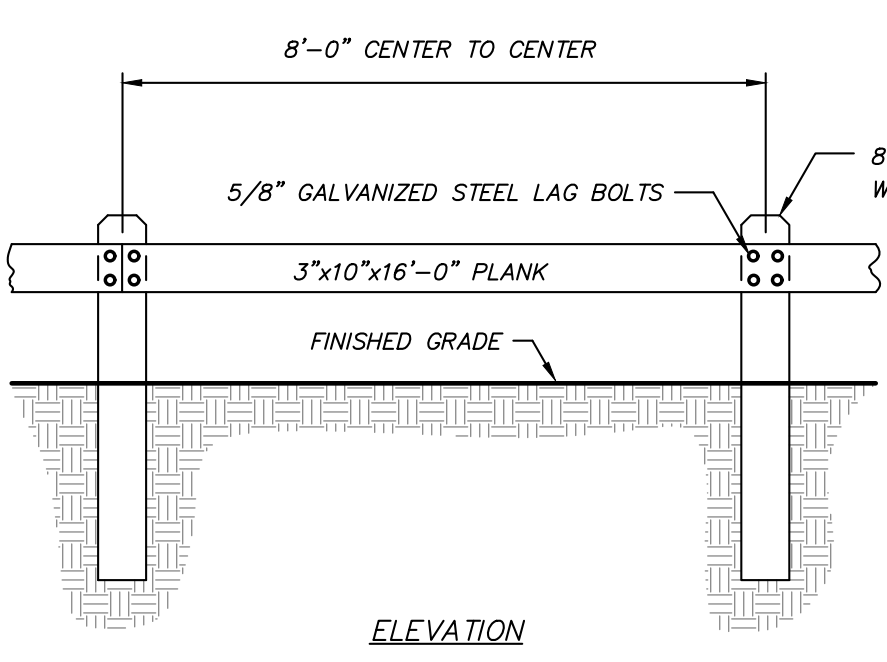
#### POST AND RAIL FENCE DETAIL (N.T.S.)



#### CROSSWALK MARKING DETAIL (N.T.S.)

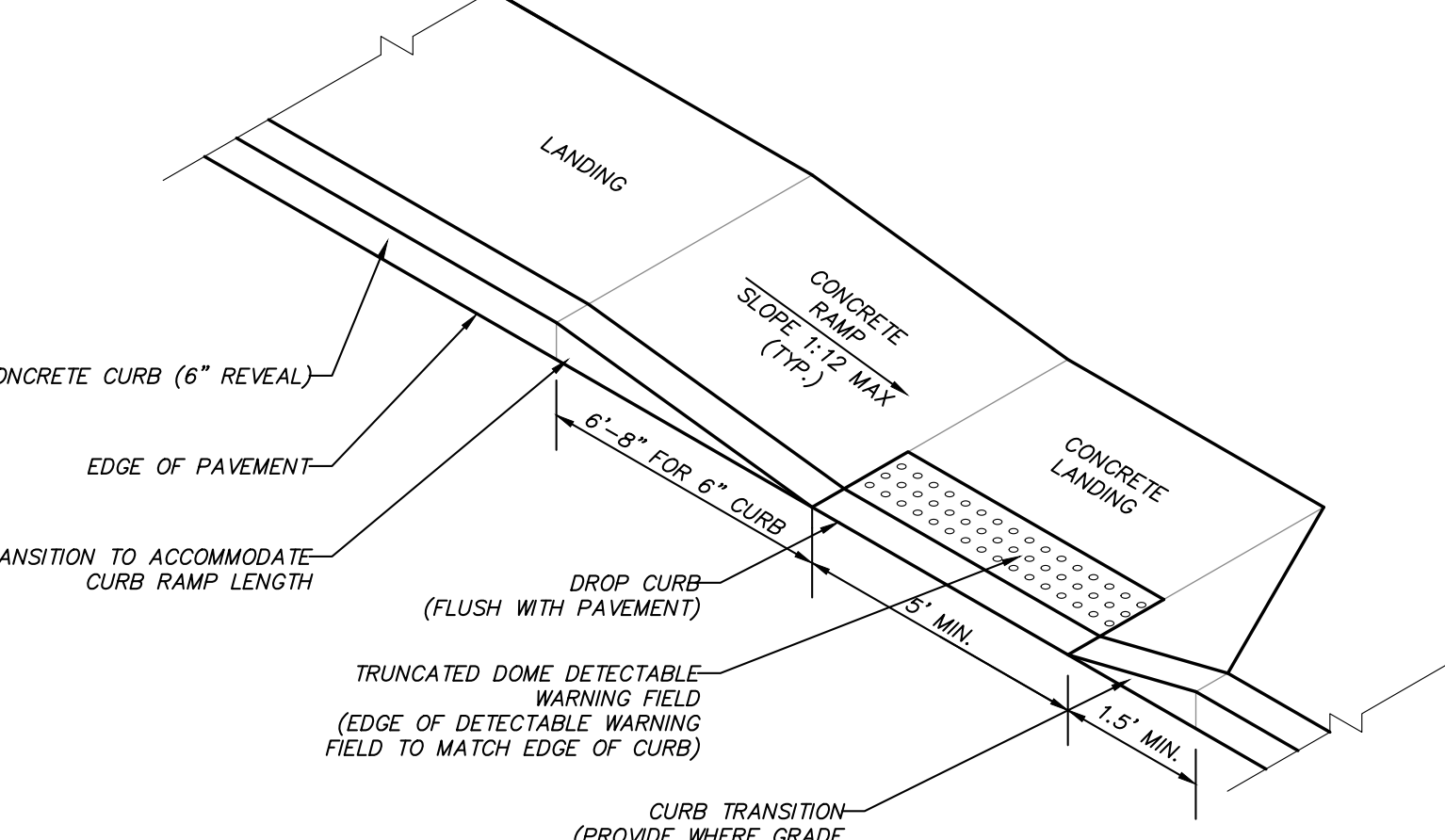
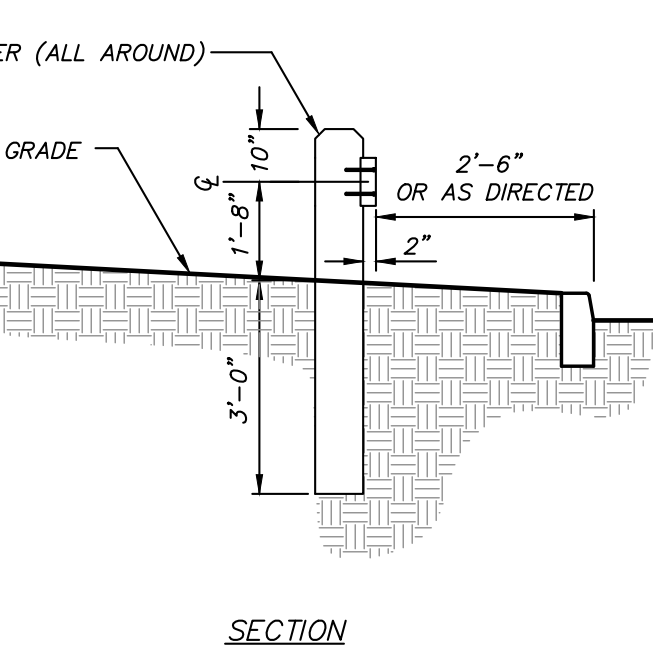


#### DROP CURB DETAIL (N.T.S.)

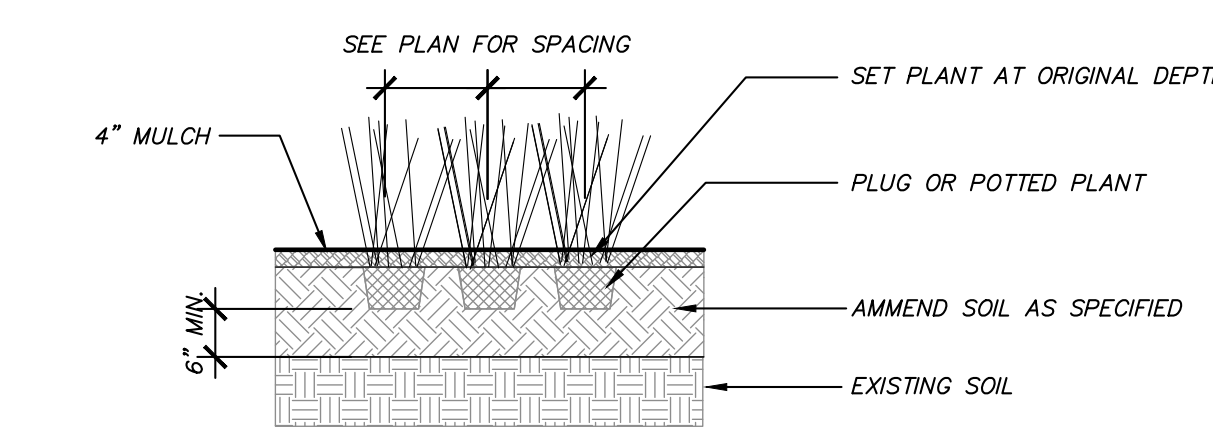
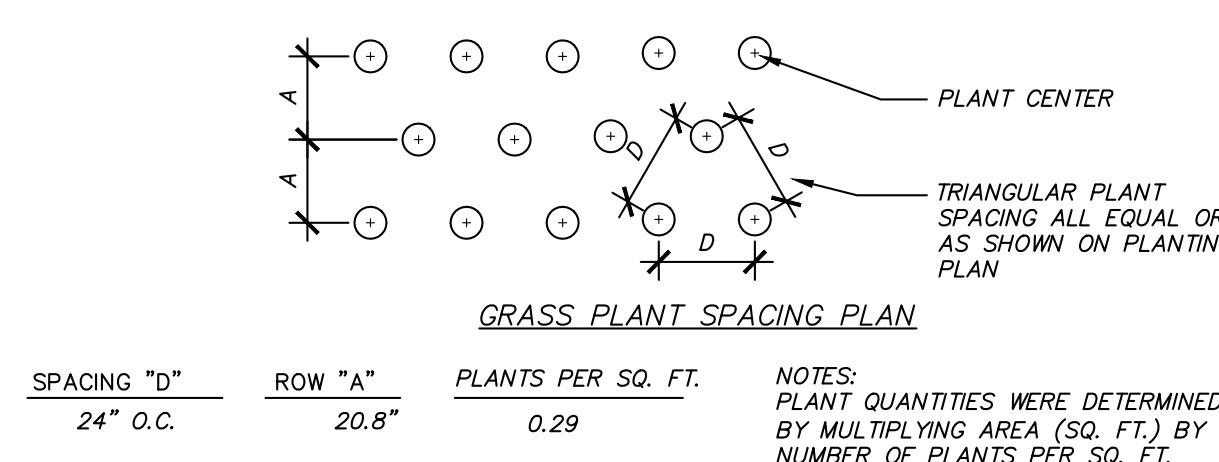


- NOTES:
1. ALL WOOD TO BE SEASONED NO.1 DOUGLAS FIR, SOUTHERN PINE OR OTHER APPROVED STRUCTURAL LUMBER.
  2. ALL WOOD TO BE TREATED WITH AN APPROVED WOOD PRESERVATIVE SUITABLE FOR INSTALLATION IN AND ADJACENT TO GROUND SURFACES.

#### WOOD GUIDE RAIL DETAIL (N.T.S.)

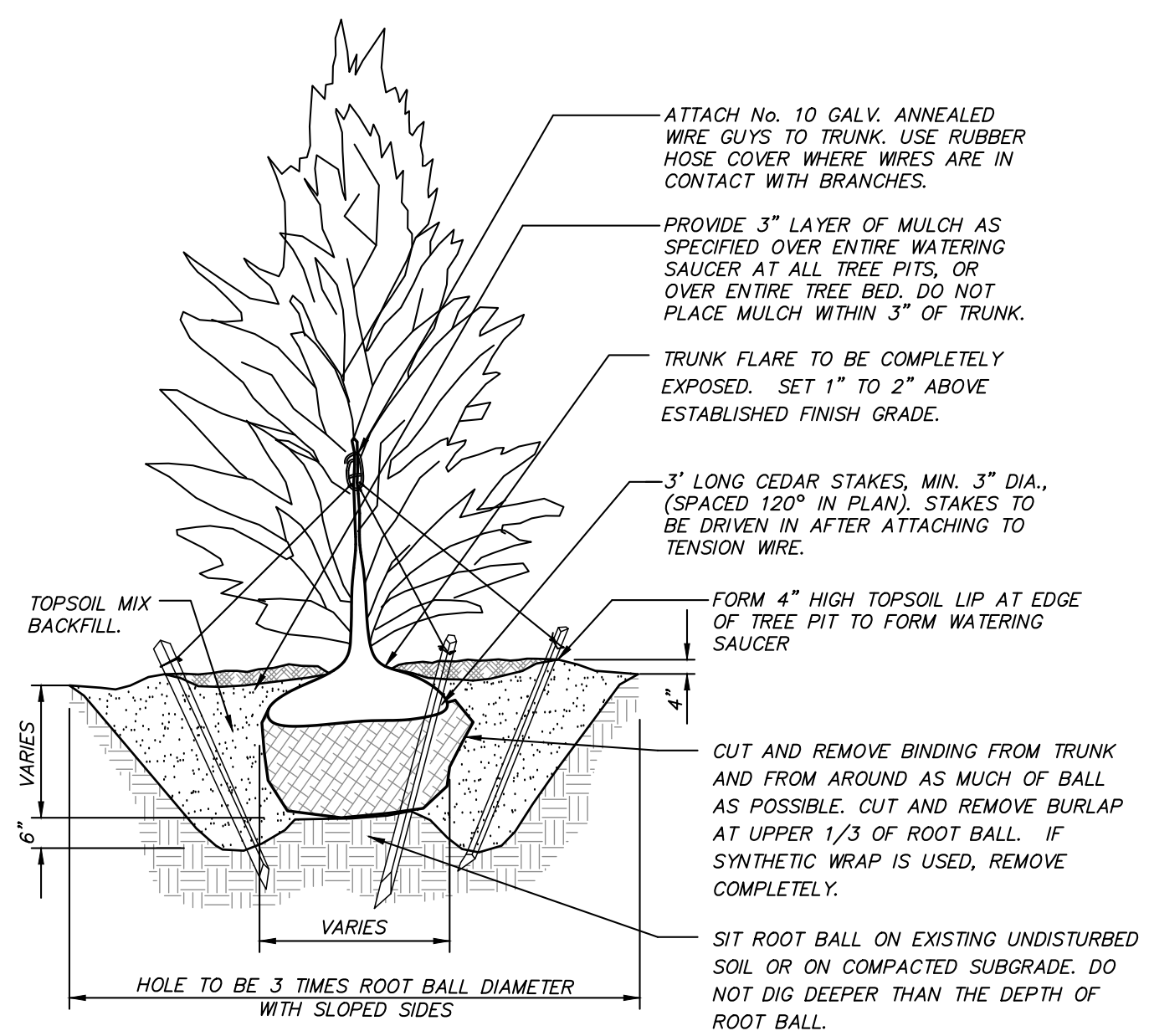


#### SIDEWALK CURB RAMP (N.T.S.)



#### PERENNIAL / ORNAMENTAL GRASS PLANTING DETAIL (N.T.S.)

#### TREE PLANTING DETAIL (N.T.S.)



#### EVERGREEN TREE PLANTING DETAIL (N.T.S.)

8	9-16-20	RE-ISSUED FOR CONSTRUCTION	ERA
7	8-26-20	ISSUED FOR CONSTRUCTION	MEU
6	6-30-20	REVISED FOR FINAL PERMITTING	JLL
5	6-15-20	REVISED PER NYCDPE SUBMISSION	EJP
4	6-10-20	TOWN BOARD SUBMISSION	JLL
3	4-17-20	ARCHITECTURAL REVIEW BOARD SUBMISSION	JLL
2	3-21-20	RESUBMISSION TO PLANNING BOARD	AT
1	2-3-20	RESUBMISSION TO PLANNING BOARD	CZ
NO.	DATE	REVISION	BY

<b>INSITE</b> ENGINEERING, SURVEYING & LANDSCAPE ARCHITECTURE, P.C.		3 Garrett Place Carmel, NY 10512 (845) 225-9690 (845) 225-9717 fax www.insite-eng.com	
PROJECT: <b>RESTAURANT DEPOT</b>			
U.S. ROUTE 8, TOWN OF SOUTHEAST, PUTNAM COUNTY, NEW YORK			
DRAWING: <b>DETAILS</b>			
PROJECT NUMBER	20174.100	PROJECT MANAGER	J.J.C.
DATE	12-23-19	DRAWN BY	J.F.R.
SCALE	AS NOTED	CHECKED BY	J.L.L.
DRAWING NO.		SHEET	
D-1		12	
		15	