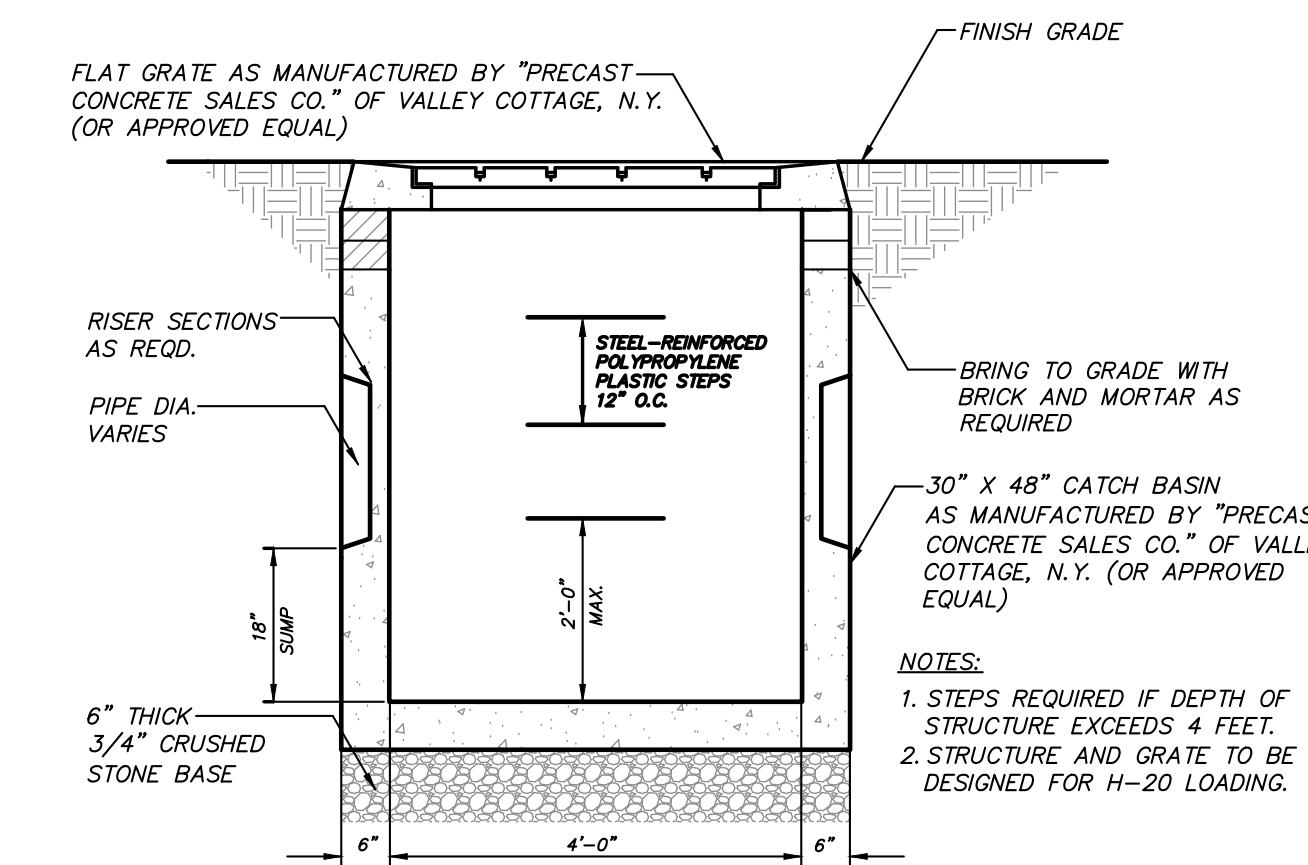
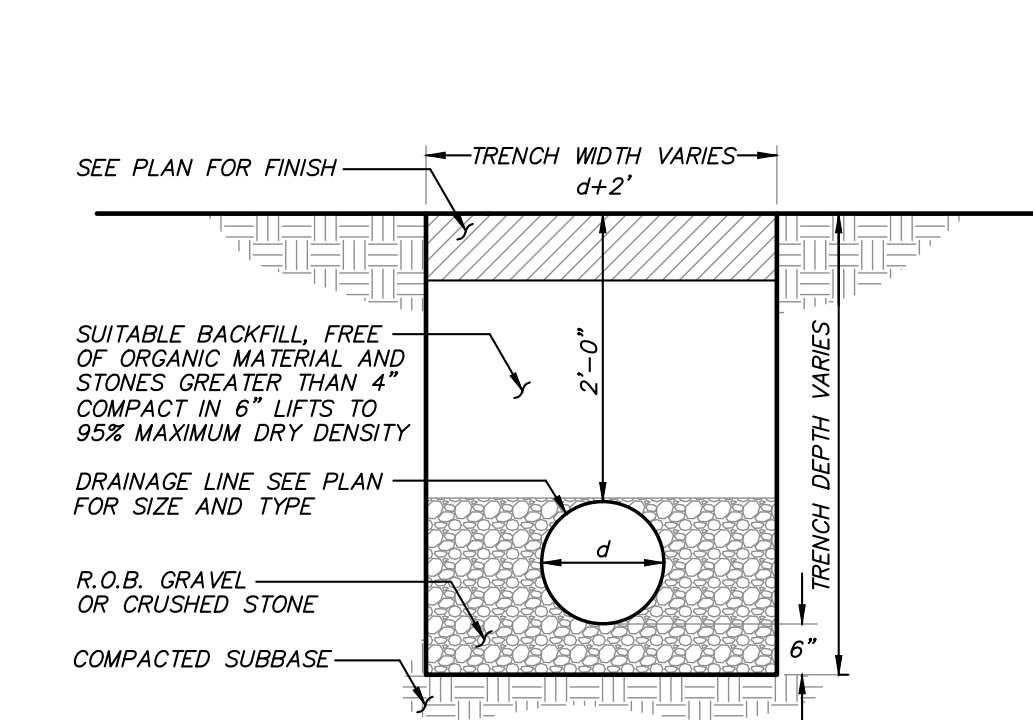


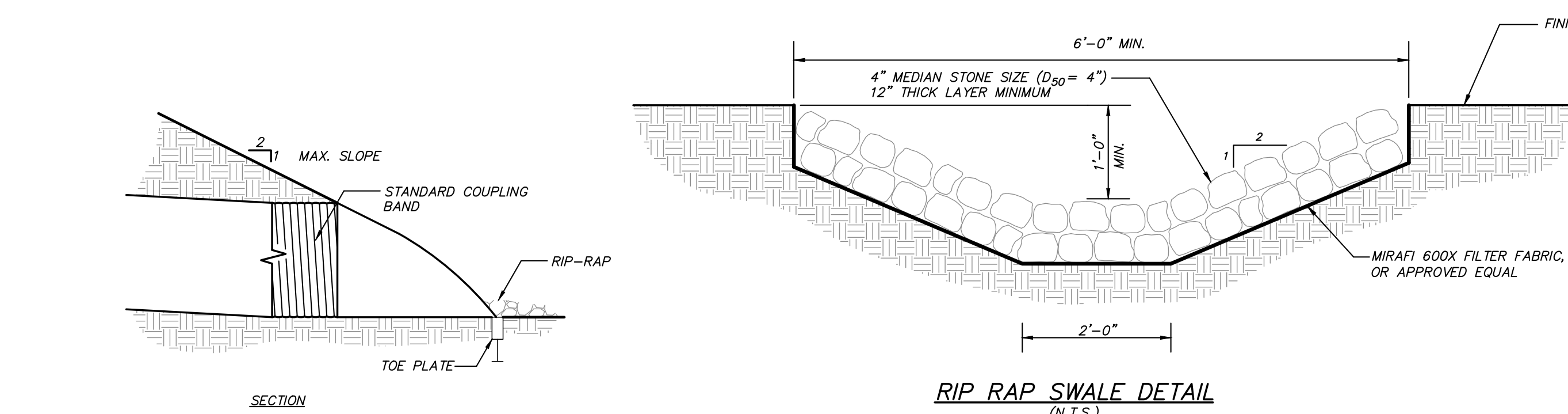
CATCH BASIN DETAIL
(N.T.S.)



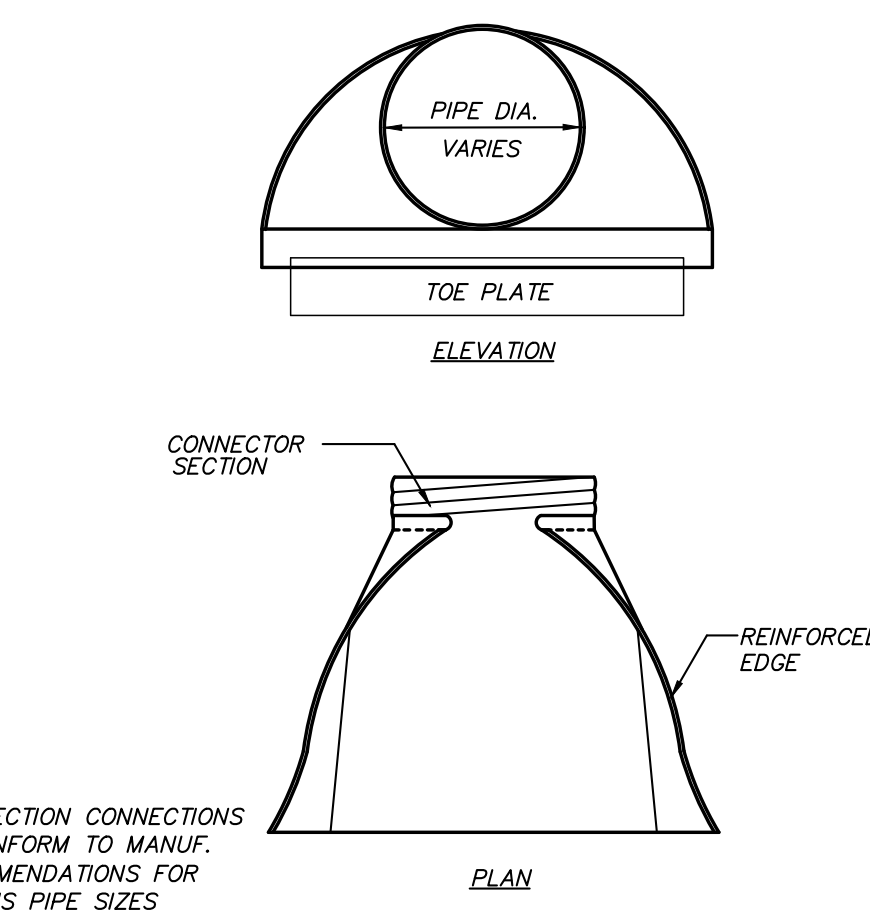
DRAIN INLET DETAIL
(N.T.S.)



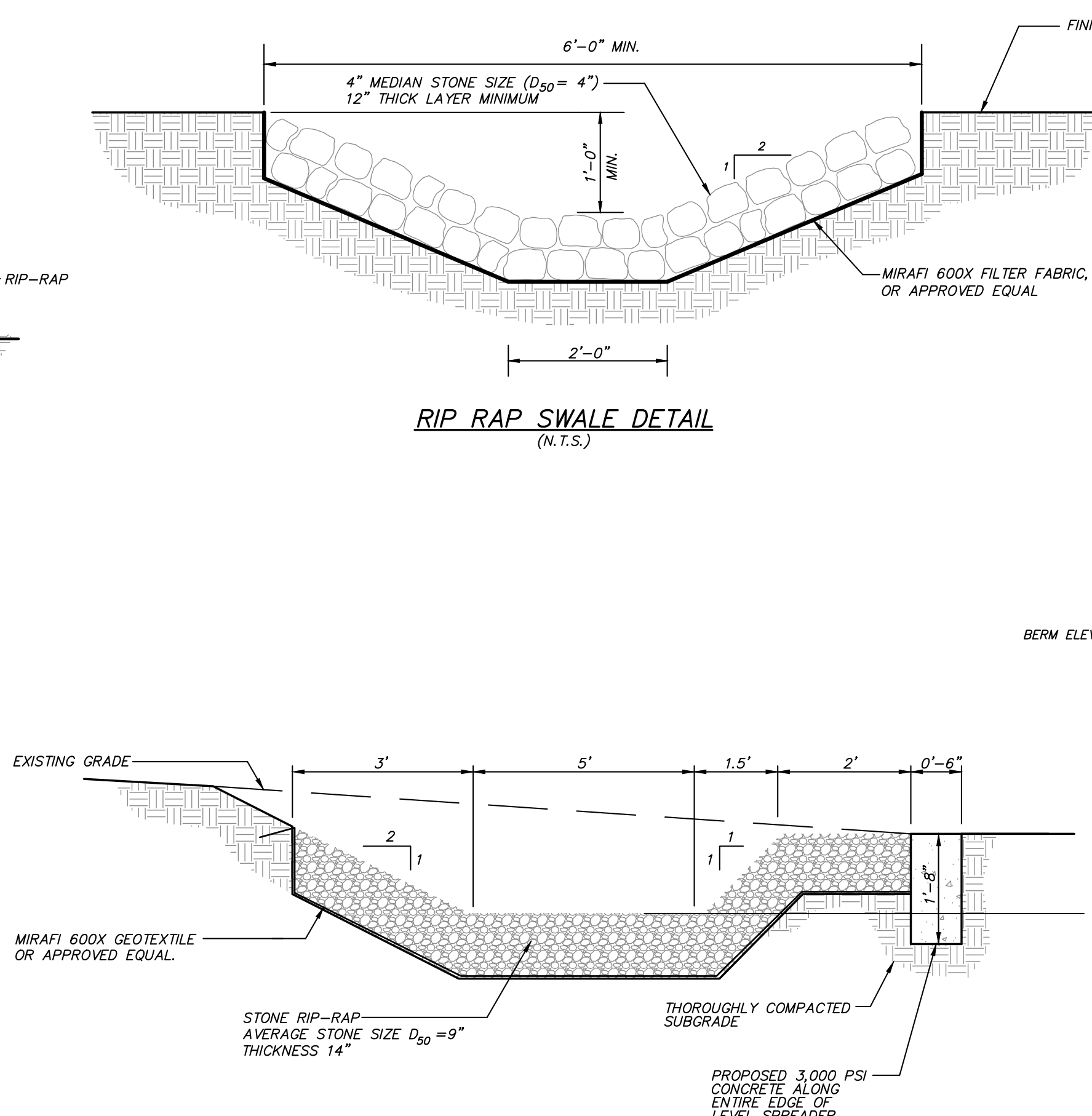
DRAINAGE LINE TRENCH DETAIL
(N.T.S.)



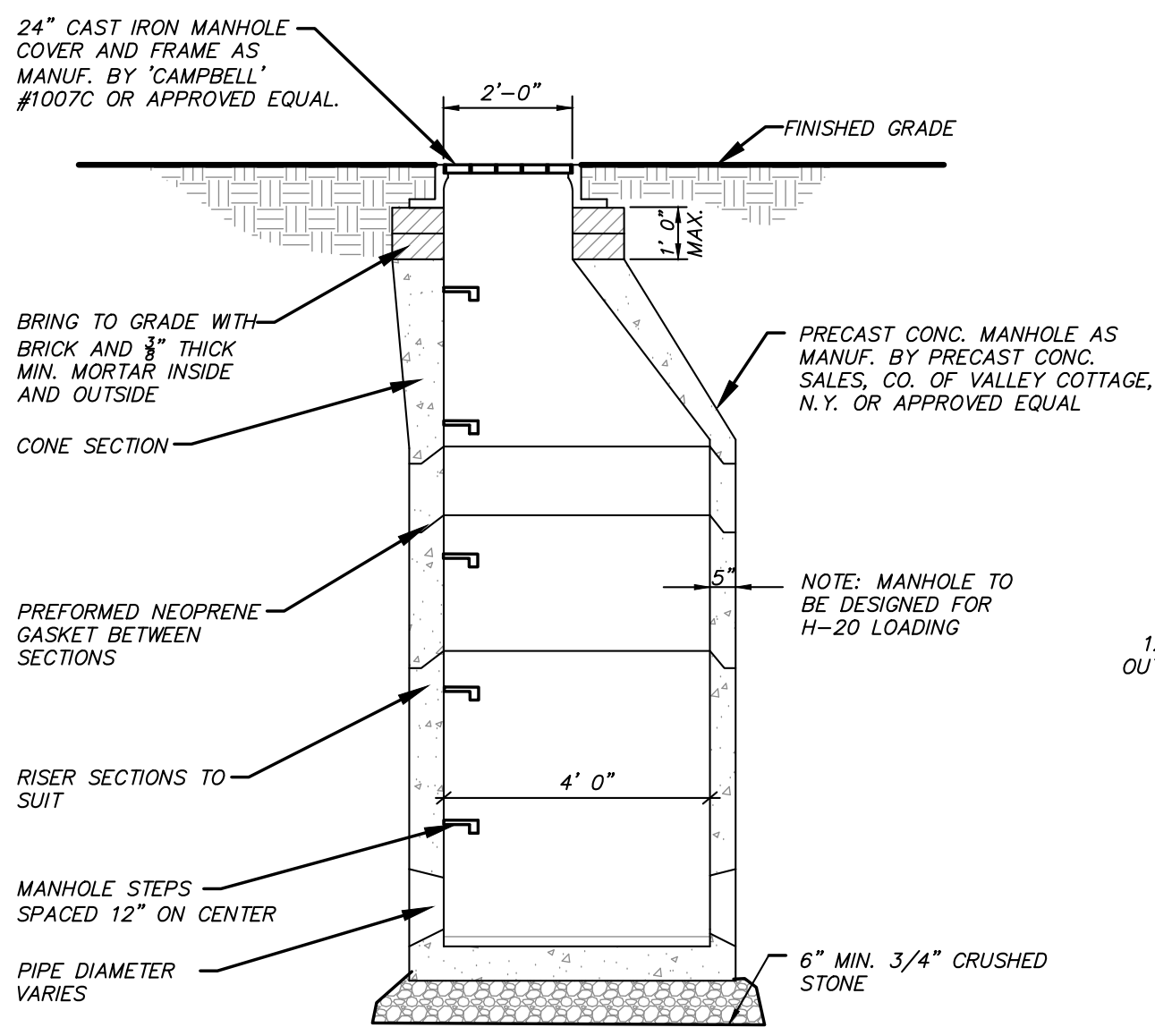
RIP RAP SWALE DETAIL
(N.T.S.)



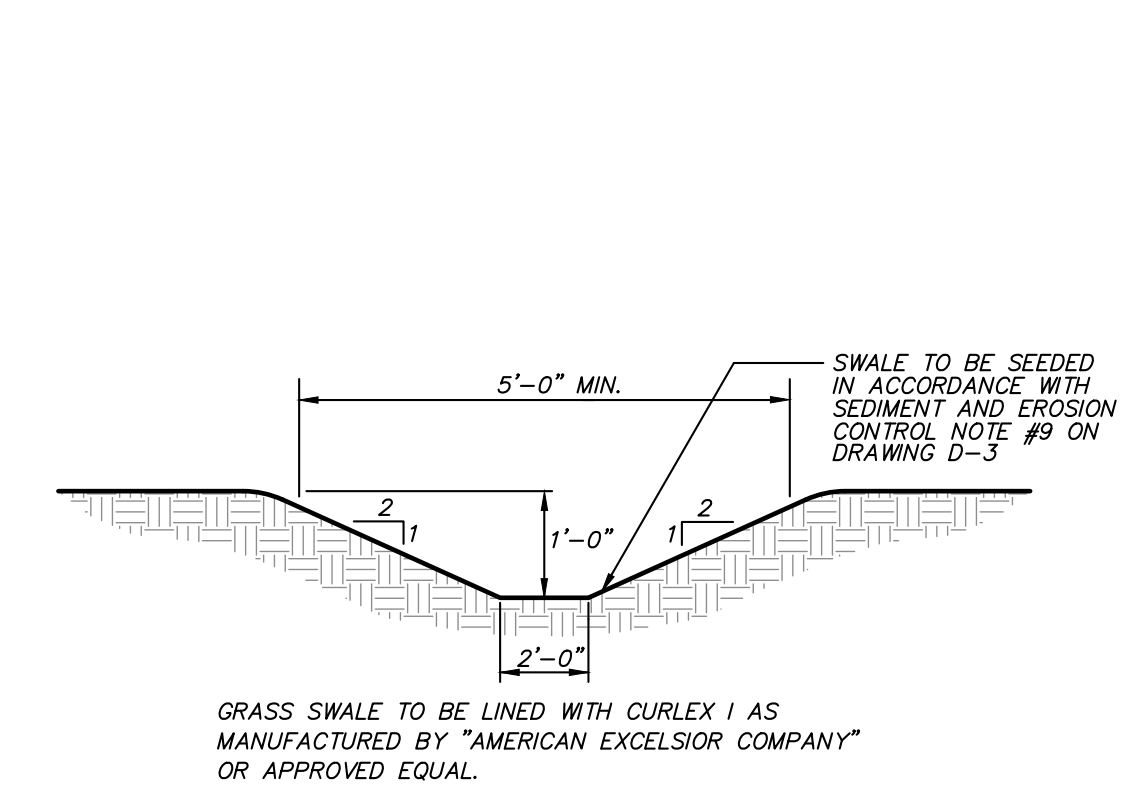
END SECTION DETAIL
(N.T.S.)



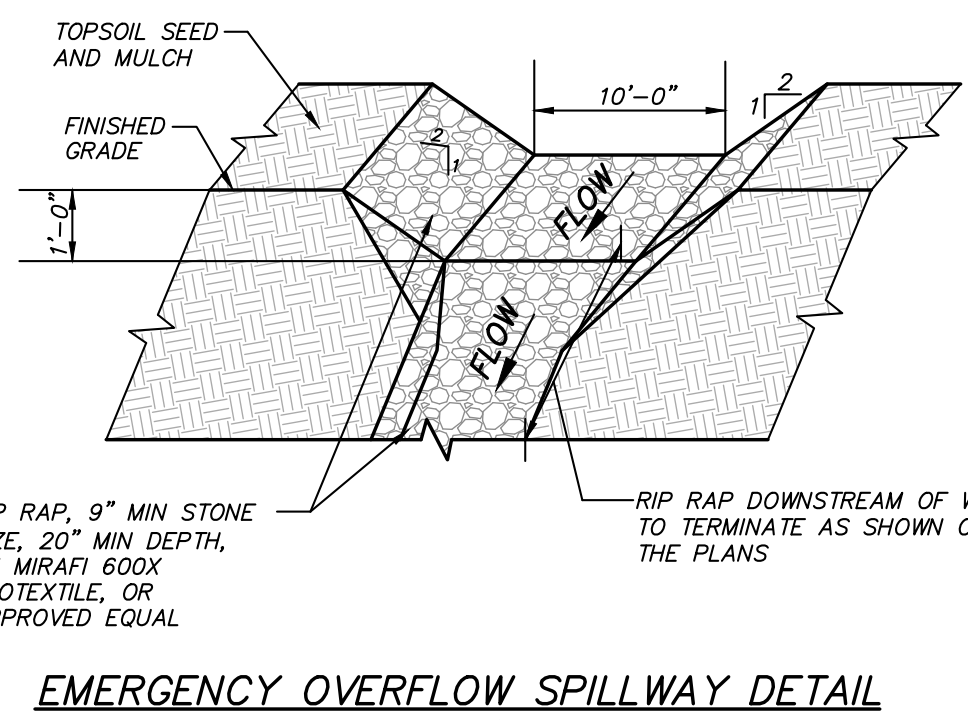
LEVEL SPREADER DETAIL
(N.T.S.)



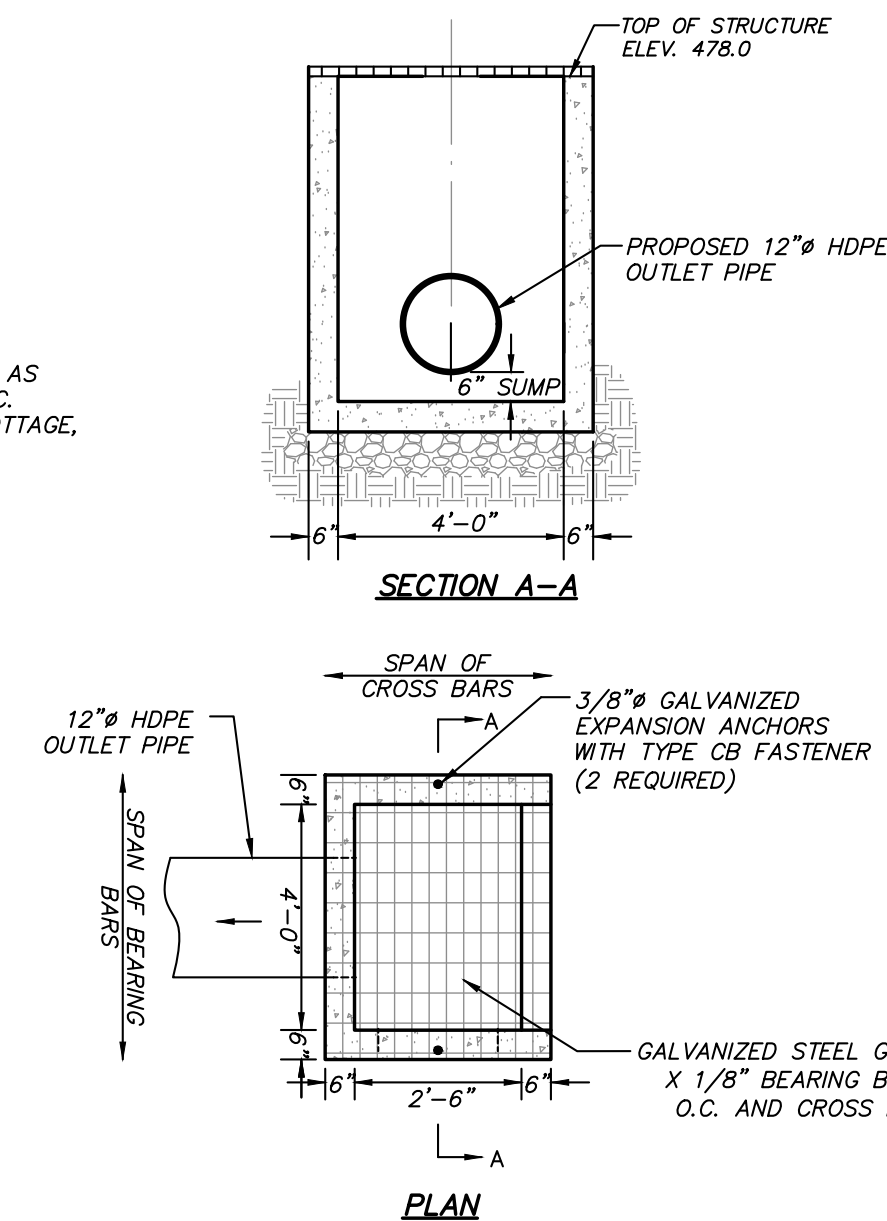
DRAINAGE MANHOLE DETAIL
(N.T.S.)



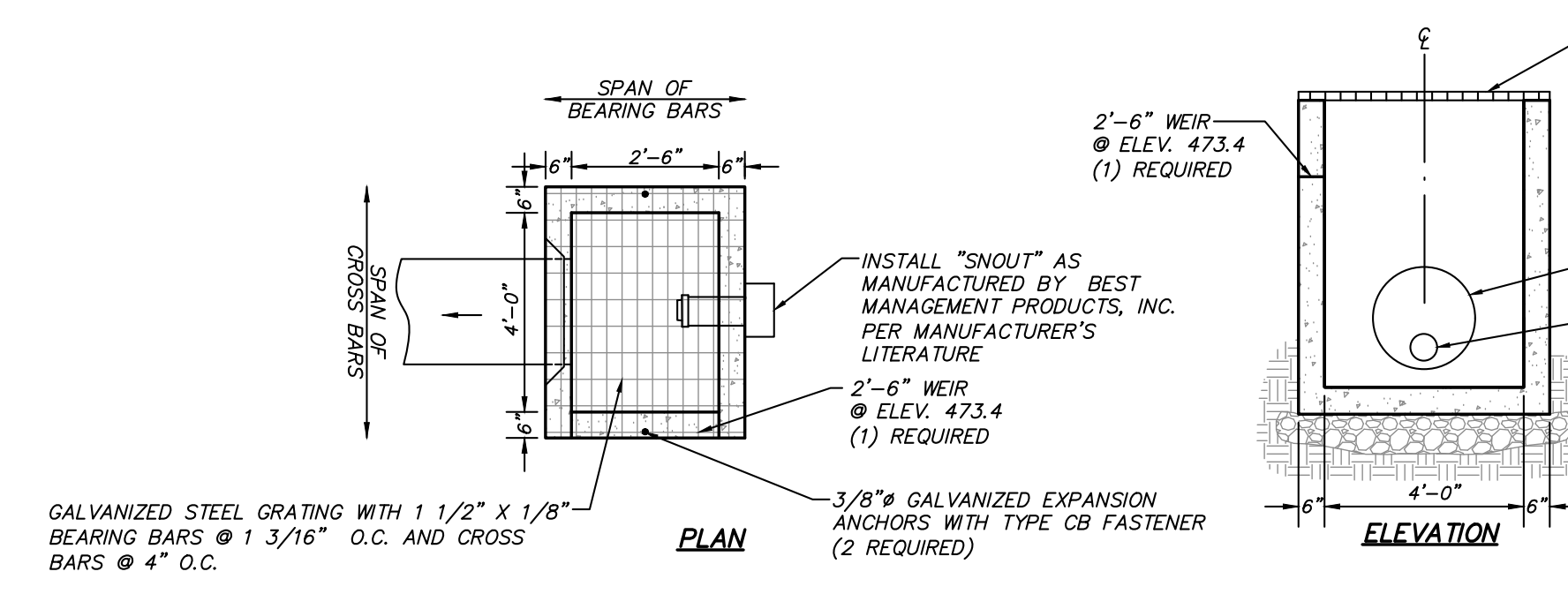
GRASS SWALE DETAIL
(N.T.S.)



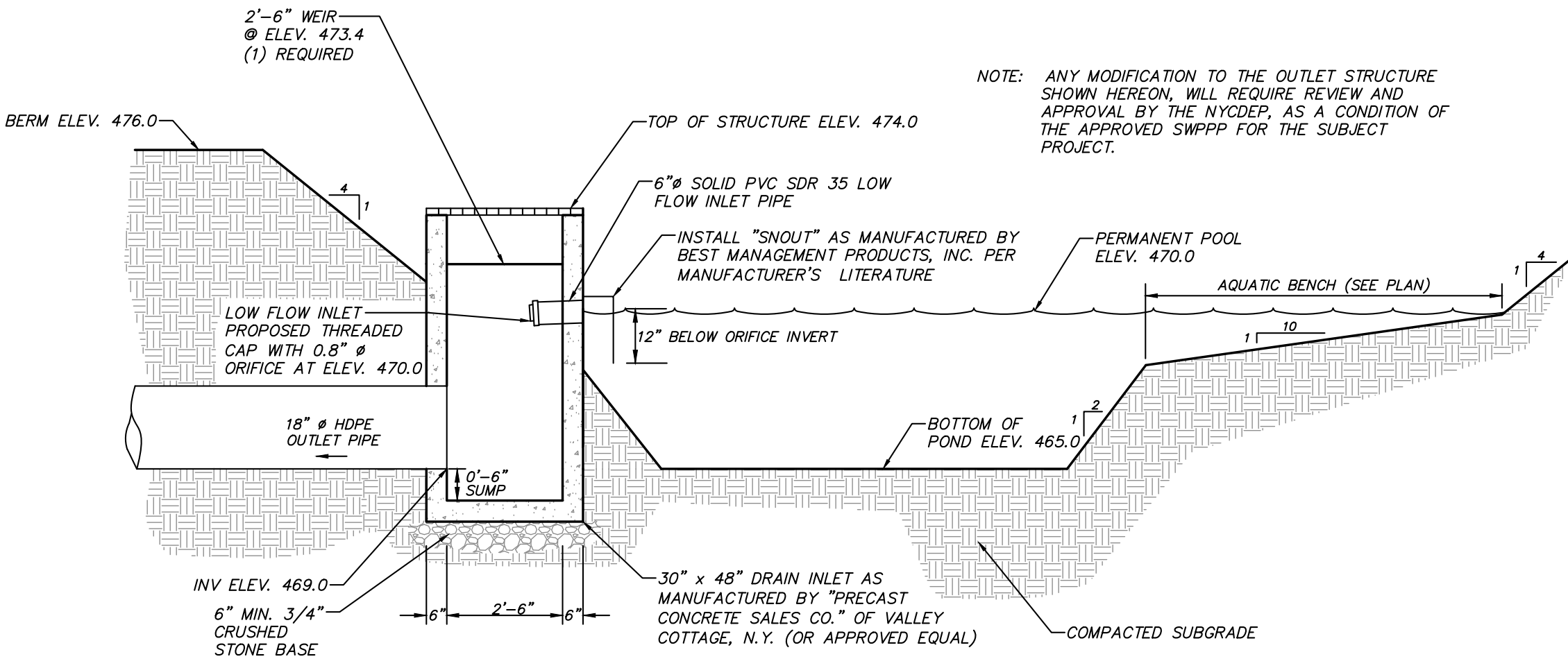
EMERGENCY OVERFLOW SPILLWAY DETAIL
(N.T.S.)



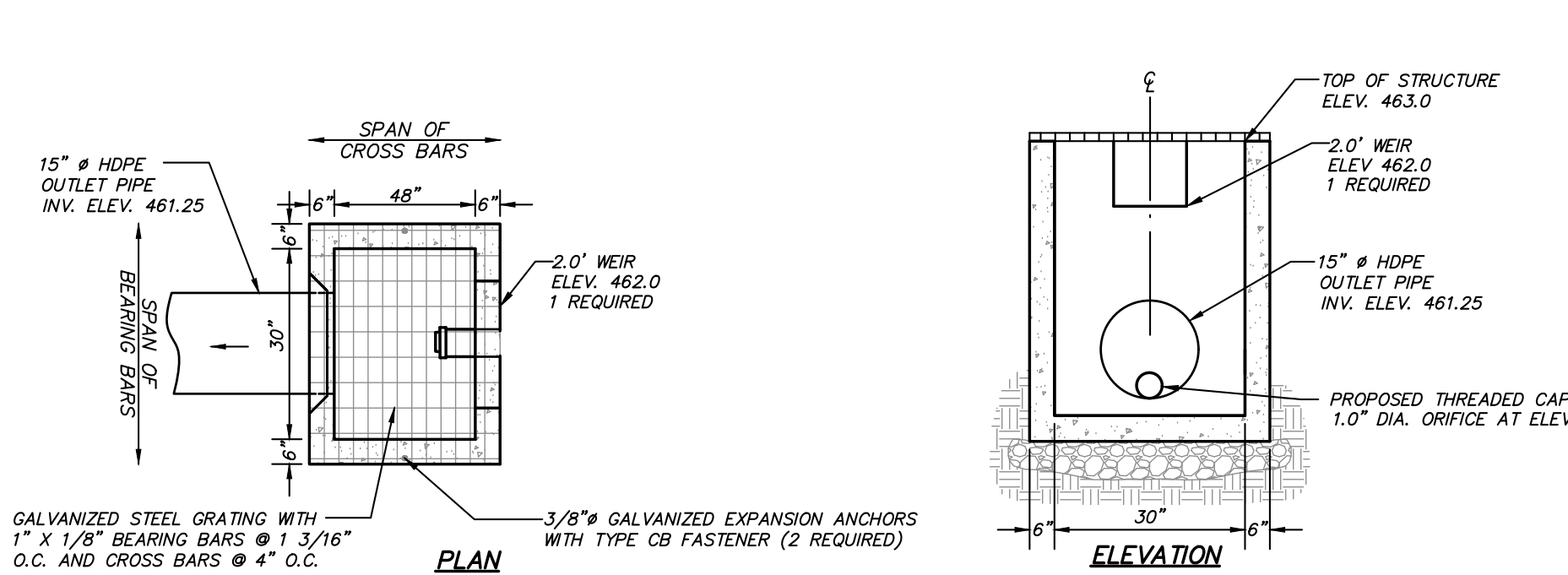
INFILTRATION BASIN 2.1P OUTLET STRUCTURE DETAIL (NYSDEC DESIGN 1-2)
(N.T.S.)



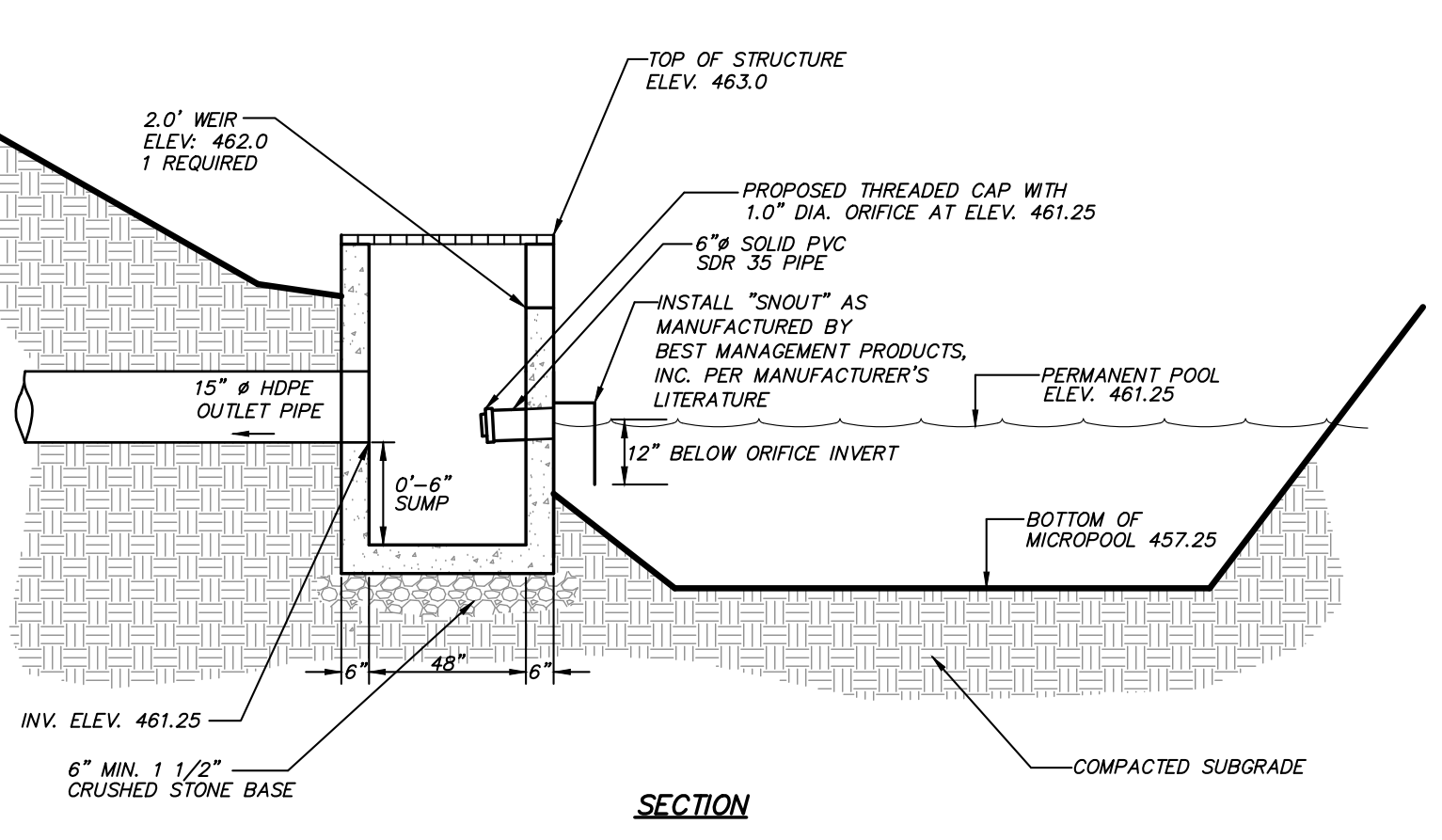
EXTENDED DETENTION DRY PRETREATMENT BASIN 2.0P OUTLET STRUCTURE (OS 2.0P) DETAIL
(N.T.S.)



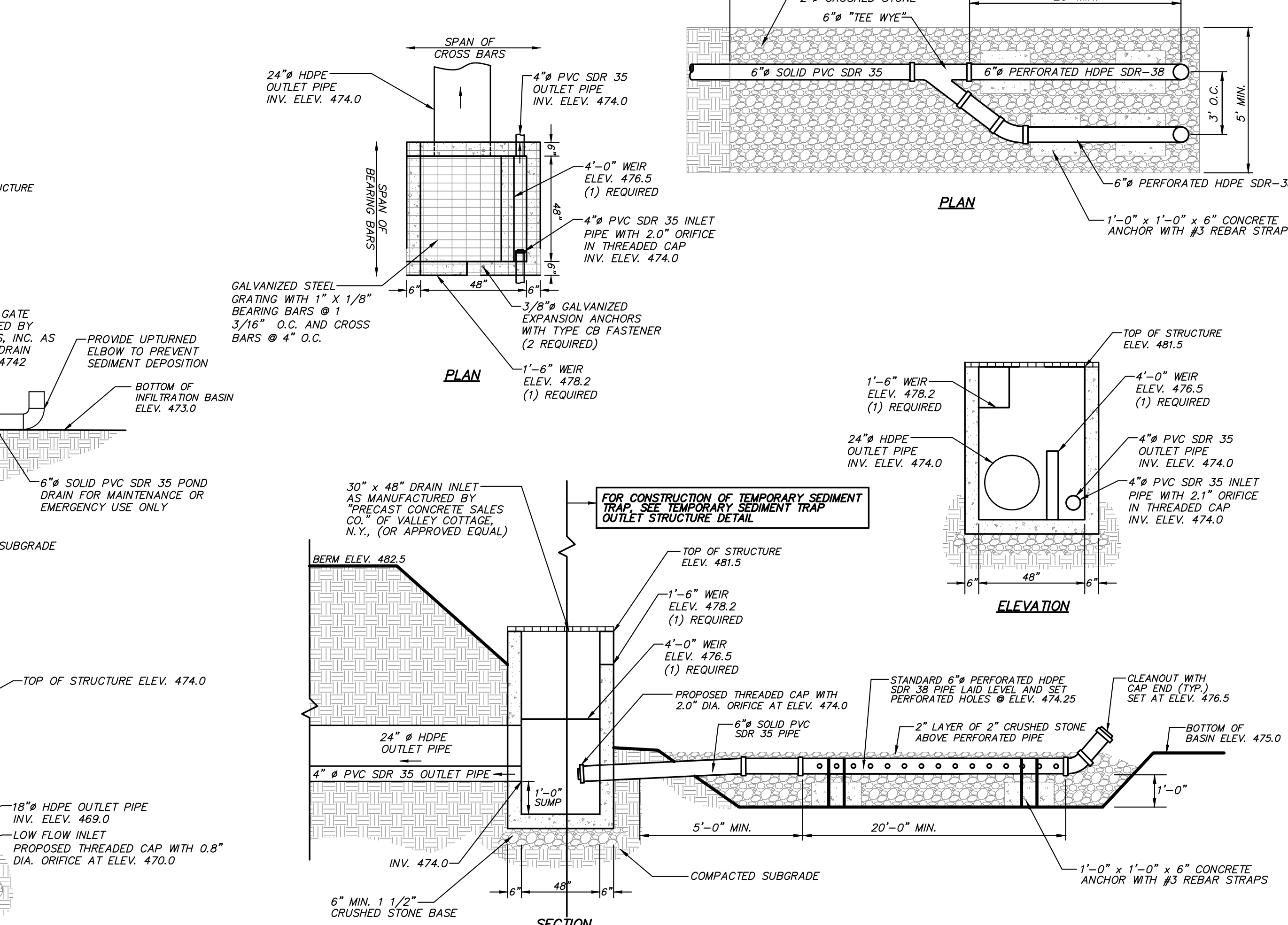
MICROPOOL EXTENDED DETENTION POND (NYSDEC DESIGN P-1) PERMANENT OUTLET STRUCTURE (OS 1.3P) DETAIL
(N.T.S.)



TEMPORARY SEDIMENT TRAP OUTLET STRUCTURE DETAIL
(N.T.S.)



STORMWATER BASIN 3.0P PERMANENT OUTLET STRUCTURE OS 3.0 DETAIL
(N.T.S.)



ROCK OUTLET PROTECTION DETAIL
(N.T.S.)

EXTENDED DETENTION DRY PRETREATMENT BASIN & INFILTRATION BASIN OUTLET NOTES

- THE BASINS ARE PROPOSED TO BE UTILIZED AS TEMPORARY SEDIMENT BASINS DURING CONSTRUCTION.
- AFTER THE CONTRIBUTING AREAS TO THE BASINS HAVE BEEN PERMANENTLY STABILIZED, THE FOLLOWING SHALL BE ACCOMPLISHED:
 - FOR EXTENDED DETENTION DRY PRETREATMENT BASINS 2.0P AND MICROPOOL EXTENDED DETENTION POND 1.3P:
 - A CLEAN BASIN AND OUTLET STRUCTURE AND REMOVE 6\"/>
 - FOR INFILTRATION BASINS 2.1P:
 - A INFILTRATION BASIN CONSTRUCTED IN ITS FINAL CONDITION PER THE DETAILS SHOWN HEREON DURING INITIAL PHASES OF CONSTRUCTION AND STABILIZED.
 - ALL FLOW SHALL BE INVERTED AWAY FROM THE BASIN UNTIL ALL CONTRIBUTING AREAS HAVE BEEN STABILIZED IN ACCORDANCE WITH THE EROSION AND SEDIMENT CONTROL NOTES.
 - UPON COMPLETE STABILIZATION OF ALL CONTRIBUTING AREAS AND CONVERSION OF THE TEMPORARY SEDIMENT TRAP TO THE PERMANENT EXTENDED DETENTION DRY PRETREATMENT STORMWATER BASIN, DIRECT ALL TO INFILTRATION BASIN.
- FOLLOWS: * WHEN INITIALLY USED AS THE TEMPORARY SEDIMENT BASIN DRAINAGE DEVICE THE RISER SHALL BE WRAPPED WITH TYFAR 3201 GEOTEXTILE OR APPROVED EQUAL AND SURROUNDED WITH 2\"/>

NO.	DATE	REVISION	BY
8	9-16-20	RE-ISSUED FOR CONSTRUCTION	ERA
7	8-26-20	ISSUED FOR CONSTRUCTION	MEU
6	6-30-20	REVISED FOR FINAL PERMITTING	JLL
5	6-15-20	REVISED PER NYDEP SUBMISSION	EJP
4	6-10-20	TOWN BOARD SUBMISSION	JLL
3	4-17-20	RESUBMISSION TO TOWN BOARD	JLL
2	3-21-20	RESUBMISSION TO PLANNING BOARD	AT
1	2-3-20	RESUBMISSION TO PLANNING BOARD	CZ

INSITE
ENGINEERING, SURVEYING &
LANDSCAPE ARCHITECTURE, P.C.

PROJECT: **RESTAURANT DEPOT**
U.S. ROUTE 8, TOWN OF SOUTHEAST, PUTNAM COUNTY, NEW YORK

DRAWING: **DETAILS**

PROJECT NUMBER: 20174.100
DATE: 12-23-19
SCALE: AS NOTED

PROJECT MANAGER: J.J.C.
DRAWN BY: J.F.R.
CHECKED BY: J.L.L.

DRAWING NO. **D-2**
SHEET 13 OF 15