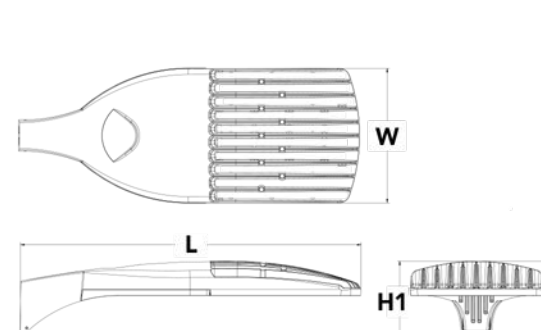


## D-Series Size 1 LED Area Luminaire



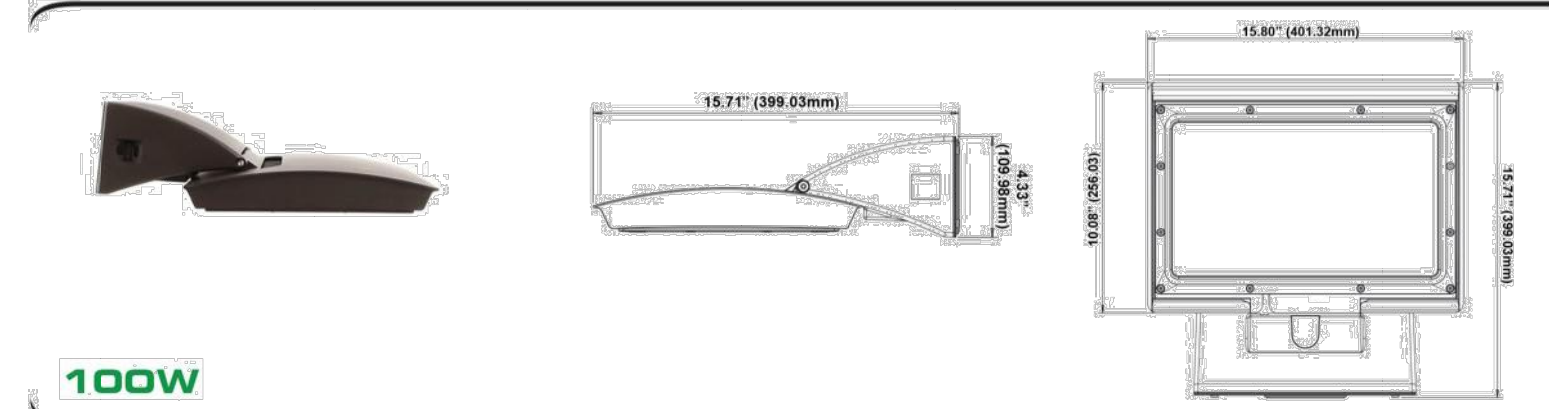
**Specifications**  
EPA: 1.01 ft<sup>2</sup>  
Length: 35"  
Width: 13"  
Height H1: 7-1/2"  
Height H2: 3-1/2"  
Weight (max): 27 lbs



**Introduction**  
The modern styling of the D-Series is striking yet unobtrusive, making a bold, progressive statement even as it blends seamlessly with its environment. The D-Series distills the benefits of the latest in LED technology into a high performance, high efficiency, long-life luminaire. The outstanding photometric performance results in sites with excellent uniformity, greater pole spacing and lower power density. It is ideal for replacing up to 750W metal halide in pedestrian and area lighting applications with typical energy savings of 65% and expected service life of over 100,000 hours.

## MPulse™ ADJUSTABLE WALL MOUNT LUMINAIRE

Thoughtfully designed for downlighting, the MPulse Wall Mount features an adjustable head that enables its use as an open face or cutoff fixture. It takes just one person to install and service the MPulse Wall Mount luminaire. The back plate mounts to the surface and allows for the wall mount to hang for easy wiring. A hinged back cover provides access to the driver for quick and easy replacement in the field.



## MaxLite™ A NEW WAVE OF LIGHT™

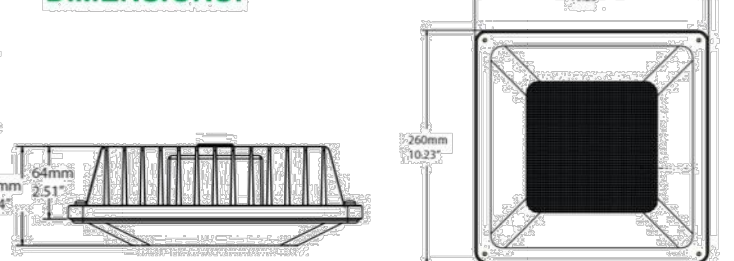
### LED LOW-PROFILE CANOPY CPL SERIES



#### FEATURES:

- 30W replaces up to 100 watt metal halide
- 30W replaces up to 150 watt metal halide
- 40W replaces up to 175 watt metal halide
- 53W replaces up to 250 watt metal halide
- Easy one-person installation, light weight with latch allowing both hands for wire connections hanging
- Universal 120-277V operation
- 0-10V Dimming driver standard
- Dual-to-down and occupancy sensor compatible
- Two Distribution patterns, Canopy & Parking Garage

#### DIMENSIONS:



## WDGE2 LED Architectural Wall Sconce



**Specifications**  
Depth (D1): 7"  
Depth (D2): 1.5"  
Height: 9"  
Width: 11.5"  
Weight: 13.5 lbs (without options)

LITHONIA LIGHTING COMMERCIAL OUTDOOR One Lithonia Way • Cary, Georgia 30013 • Phone: 1-800-705-4557 (TOLL FREE) • [www.lithonia.com](http://www.lithonia.com)

### LUMINAIRE SCHEDULE

Symbol	Qty	Catalog Number	Description	Lamp	Mounting Height
■	28	DSX1 LED P1 40K BLC MVOLT	LITHONIA D-SERIES SIZE 1 LED AREA LUMINAIRE	LED	20' - 0"
■	7	DSX1 LED P1 40K BLC MVOLT	LITHONIA D-SERIES SIZE 1 DUAL MOUNT LED AREA LUMINAIRE	LED	20' - 0"
★	12	4CP58L40B1	CANOPY MOUNTED LED CANOPY LUMINAIRE, FLAT LENS, 120/277 UNIVERSAL VOLTAGE, WHITE COLOR, COORDINATE FINISH WITH ARCHITECT	LED	14' - 0"
■	4	MP-SM100U74-40B	WALL MOUNTED FULL CUTOFF LED LUMINAIRE, TYPE IV DISTRIBUTION, 120/277 UNIVERSAL VOLTAGE, COORDINATE COLOR, LOCATION AND MOUNTING HEIGHT WITH ARCHITECT	LED	22' - 6"
■	9	WDGE2 LED P4 40K BOCI VF	WDGE2 LED WITH P4-PERFORMANCE PACKAGE, 4000K, BOCI, VISUAL COMFORT FORWARD OPTIC, COORDINATE COLOR, LOCATION AND MOUNTING HEIGHT WITH ARCHITECT	LED	13' - 6" 10' - 0"

### STATISTICS

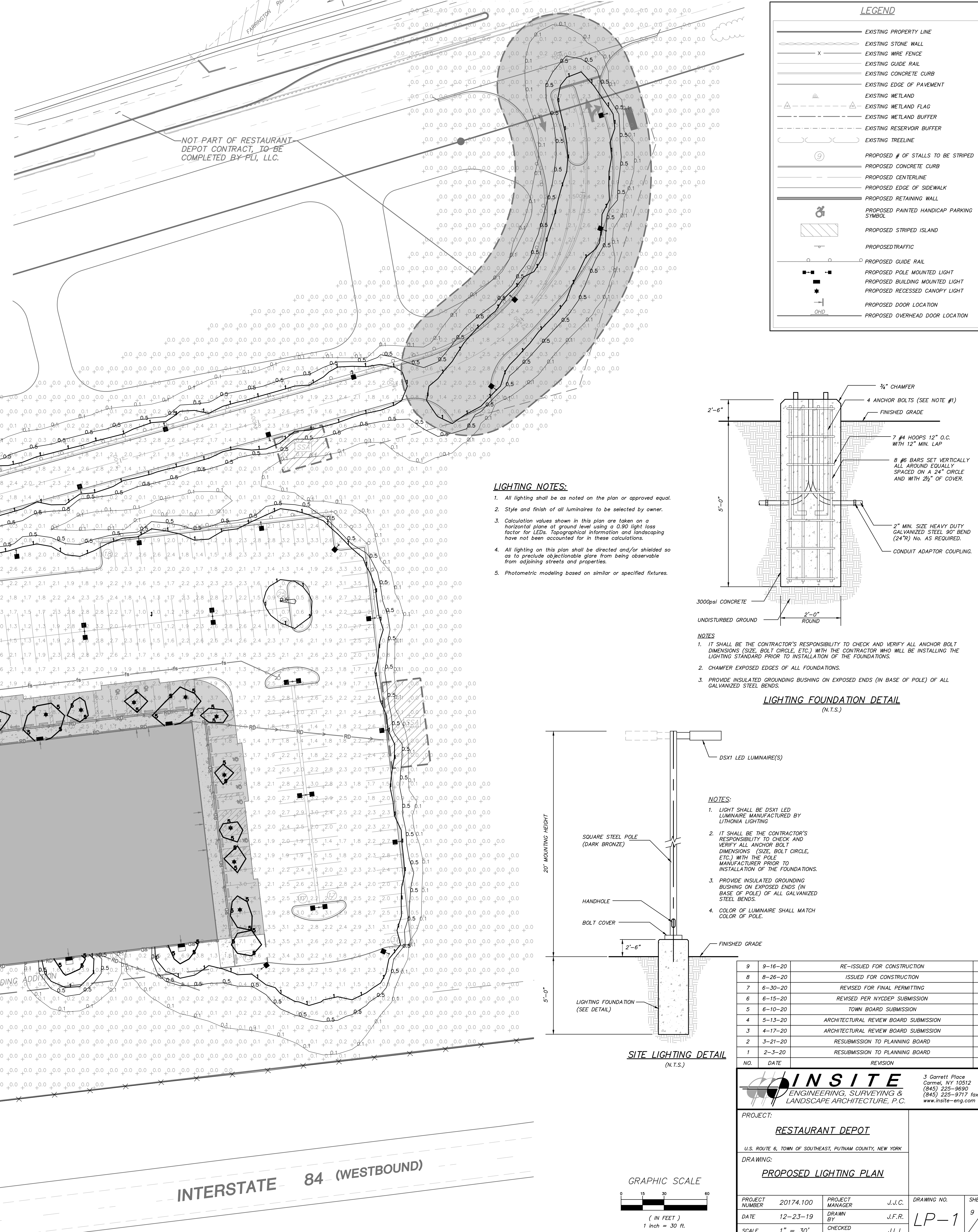
DESCRIPTION	SYMBOL	AVG	MAX	MIN	AVG/MAX	AVG/MIN
Project Area	+	1.0 fc	12.3 fc	0 fc	N/A	N/A

### LIGHT CONTOUR LEGEND

— 0.1 —	0.10 Foot Candles
— 0.5 —	0.50 Foot Candles
— 1 —	1.00 Foot Candles
— 5 —	5.00 Foot Candles

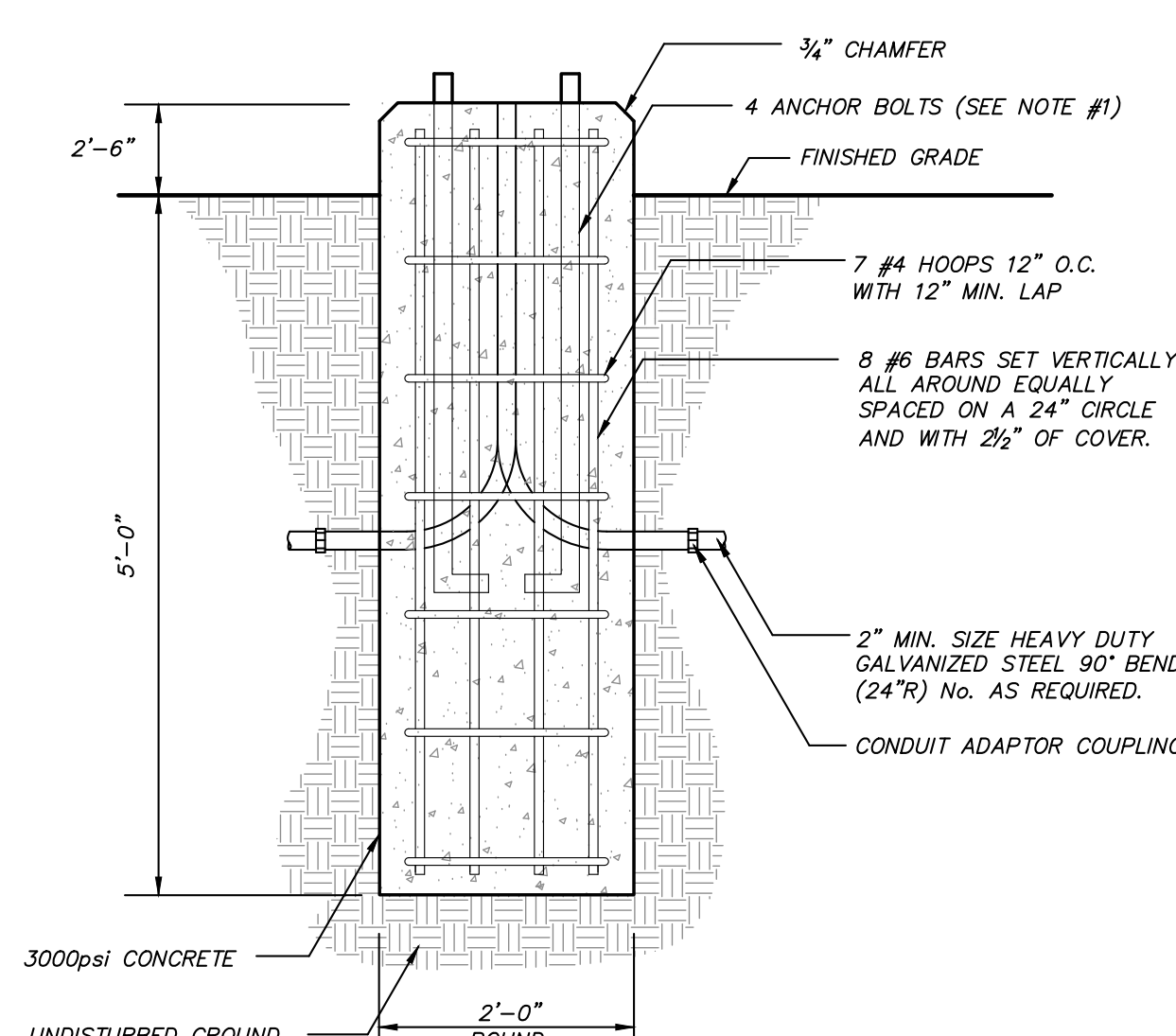
\* Photometric calculations shown on plan are in foot candles.

**Introduction**  
The WDGE LED family is designed to meet specifiers' every wall-mounted lighting need in a widely accepted shape that blends with any architecture. The clean rectangular design comes in four sizes with lumen packages ranging from 1,200 to 25,000 lumens, providing a true site-wide solution. Embedded with nLight® AIR wireless controls, the WDGE family provides additional energy savings and code compliance. WDGE2 delivers up to 6,000 lumens with a soft, non-pixelated light source, creating a visually comfortable environment. When combined with multiple integrated emergency battery backup options, including an 18W cold temperature option, the WDGE2 becomes the ideal wall-mounted lighting solution for pedestrian scale applications in any environment.



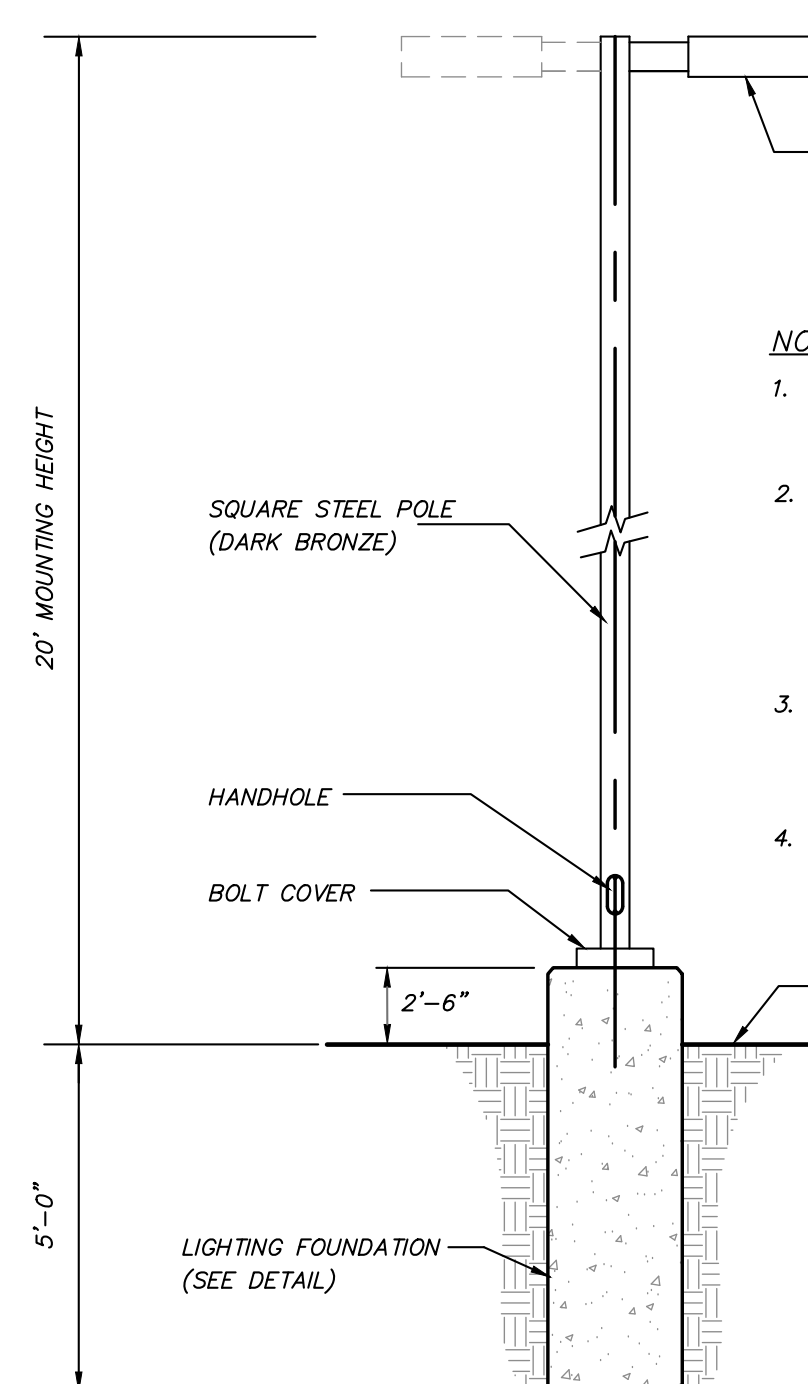
### LIGHTING NOTES:

1. All lighting shall be as noted on the plan or approved equal.
2. Style and finish of all luminaires to be selected by owner.
3. Calculation values shown in this plan are taken on a horizontal plane at ground level using a 0.90 light loss factor for LEDs. Topographical information and landscaping have not been accounted for in these calculations.
4. All lighting on this plan shall be directed and/or shielded so as to preclude objectionable glare from being observable from adjoining streets and properties.
5. Photometric modeling based on similar or specified fixtures.



- NOTES**
1. IT SHALL BE THE CONTRACTOR'S RESPONSIBILITY TO CHECK AND VERIFY ALL ANCHOR BOLT DIMENSIONS (SIZE, BOLT CIRCLE, ETC.) WITH THE CONTRACTOR WHO WILL BE INSTALLING THE LIGHTING STANDARD PRIOR TO INSTALLATION OF THE FOUNDATIONS.
  2. CHAMFER EXPOSED EDGES OF ALL FOUNDATIONS.
  3. PROVIDE INSULATED GROUNDING BUSHING ON EXPOSED ENDS (IN BASE OF POLE) OF ALL GALVANIZED STEEL BENDS.

### LIGHTING FOUNDATION DETAIL (N.T.S.)



#### NOTES:

1. LIGHT SHALL BE DSX1 LED LUMINAIRE MANUFACTURED BY LITHONIA LIGHTING
2. IT SHALL BE THE CONTRACTOR'S RESPONSIBILITY TO CHECK AND VERIFY ALL ANCHOR BOLT DIMENSIONS (SIZE, BOLT CIRCLE, ETC.) WITH THE CONTRACTOR WHO WILL BE INSTALLING THE LIGHTING STANDARD PRIOR TO INSTALLATION OF THE FOUNDATIONS.
3. PROVIDE INSULATED GROUNDING BUSHING ON EXPOSED ENDS (IN BASE OF POLE) OF ALL GALVANIZED STEEL BENDS.
4. COLOR OF LUMINAIRE SHALL MATCH COLOR OF POLE.

### SITE LIGHTING DETAIL (N.T.S.)

NO.	DATE	REVISION	BY
9	9-16-20	RE-ISSUED FOR CONSTRUCTION	ERA
8	8-26-20	ISSUED FOR CONSTRUCTION	MEU
7	6-30-20	REVISED FOR FINAL PERMITTING	JLL
6	6-15-20	REVISED PER NYCDP SUBMISSION	EJP
5	6-10-20	TOWN BOARD SUBMISSION	JLL
4	5-13-20	ARCHITECTURAL REVIEW BOARD SUBMISSION	JLL
3	4-17-20	ARCHITECTURAL REVIEW BOARD SUBMISSION	JLL
2	3-21-20	SUBMISSION TO PLANNING BOARD	AT
1	2-3-20	RESUBMISSION TO PLANNING BOARD	CZ

**INSITE**  
ENGINEERING, SURVEYING & LANDSCAPE ARCHITECTURE, P.C.  
3 Garrett Place  
Carmel, NY 10512  
(845) 225-9690  
(845) 225-9717 fax  
[www.insite-eng.com](http://www.insite-eng.com)

**PROJECT:**  
RESTAURANT DEPOT  
U.S. ROUTE 8, TOWN OF SOUTHEAST, PUTNAM COUNTY, NEW YORK

**DRAWING:**  
PROPOSED LIGHTING PLAN

PROJECT NUMBER	20174.100	PROJECT MANAGER	J.J.C.	DRAWING NO.	SHEET
DATE	12-23-19	DRAWN BY	J.F.R.	LP-1	9
SCALE	1" = 30'	CHECKED BY	J.L.L.		15

ALTERATION OF THIS DOCUMENT, UNLESS UNDER THE DIRECTION OF A LICENSED PROFESSIONAL ENGINEER, IS A VIOLATION OF SECTION 1209 OF ARTICLE 145 OF THE EDUCATION LAW.

Z:\20174.100 Restaurant Depot\09 PLI.dwg 9/16/2020 4:04:54 PM m.martinez, L.L.