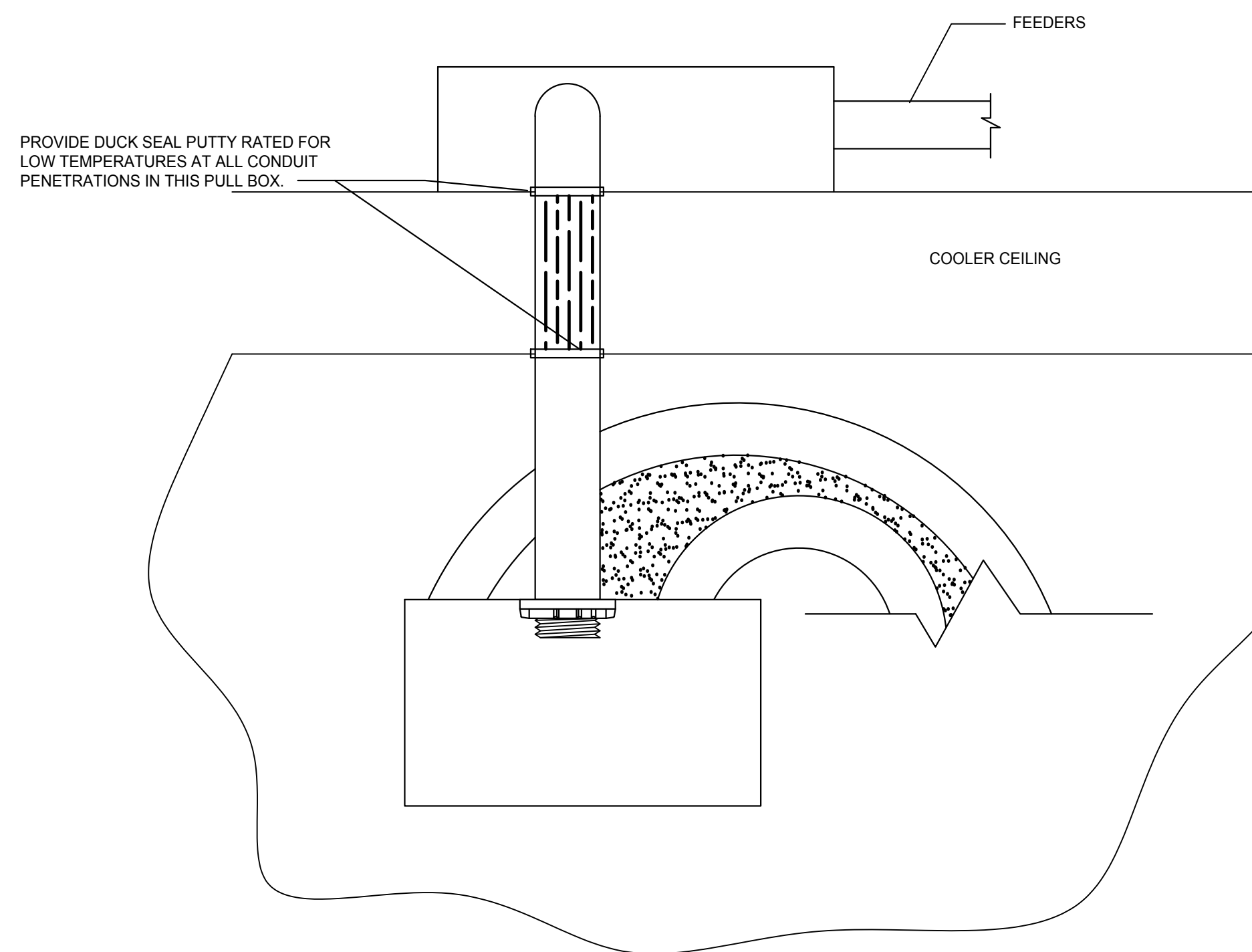
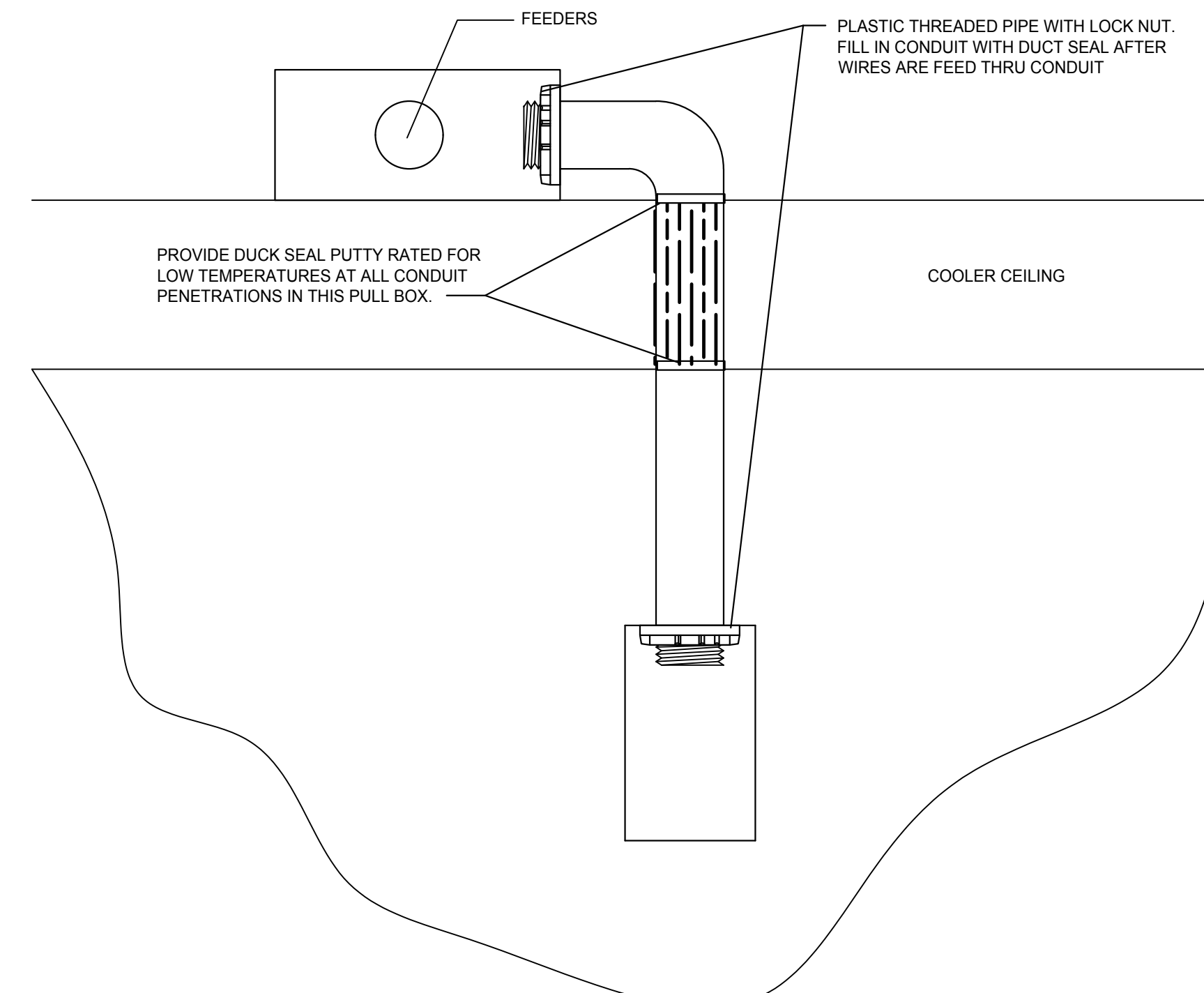


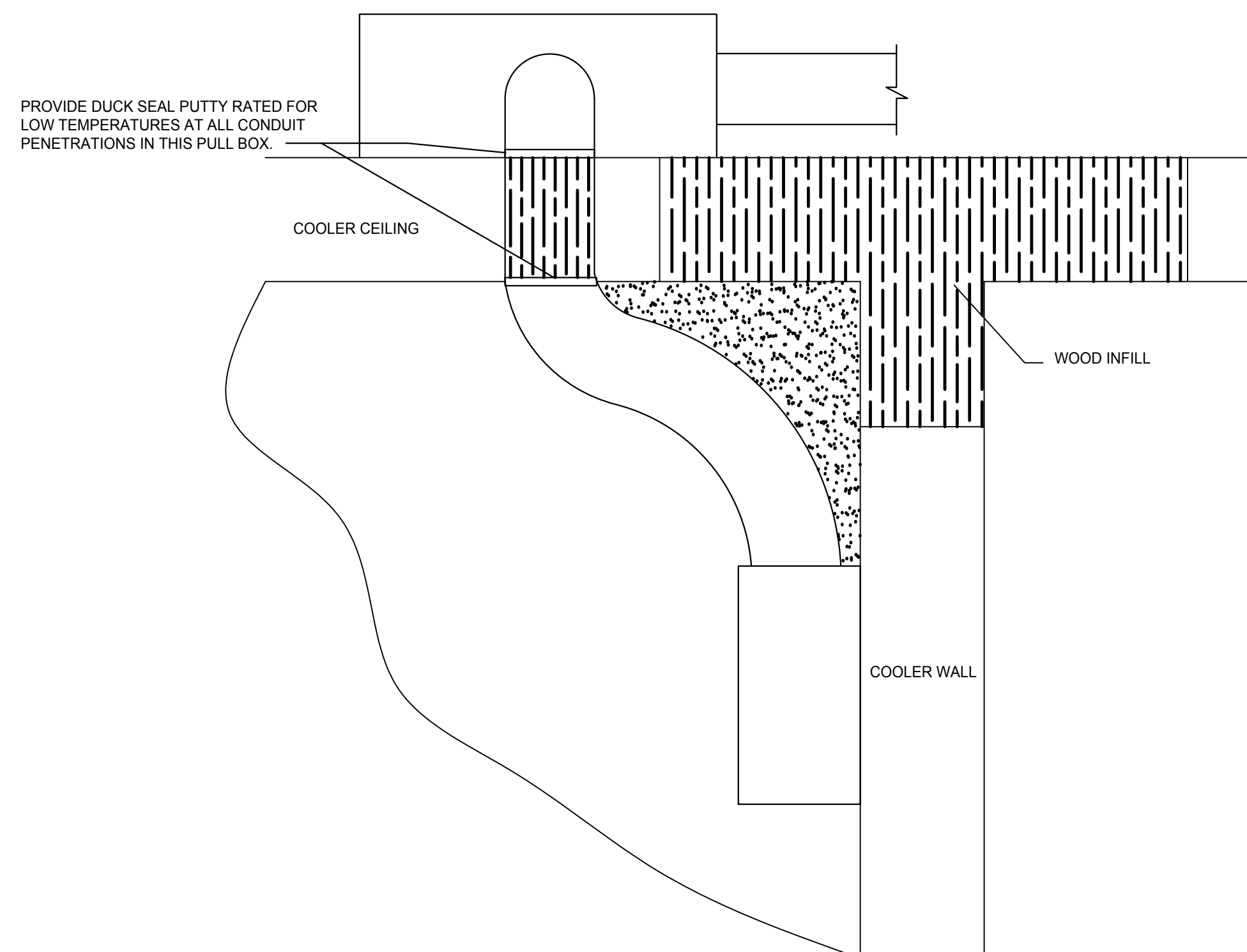
1 EVAPORATOR WIRING DETAIL
E0.03 NTS



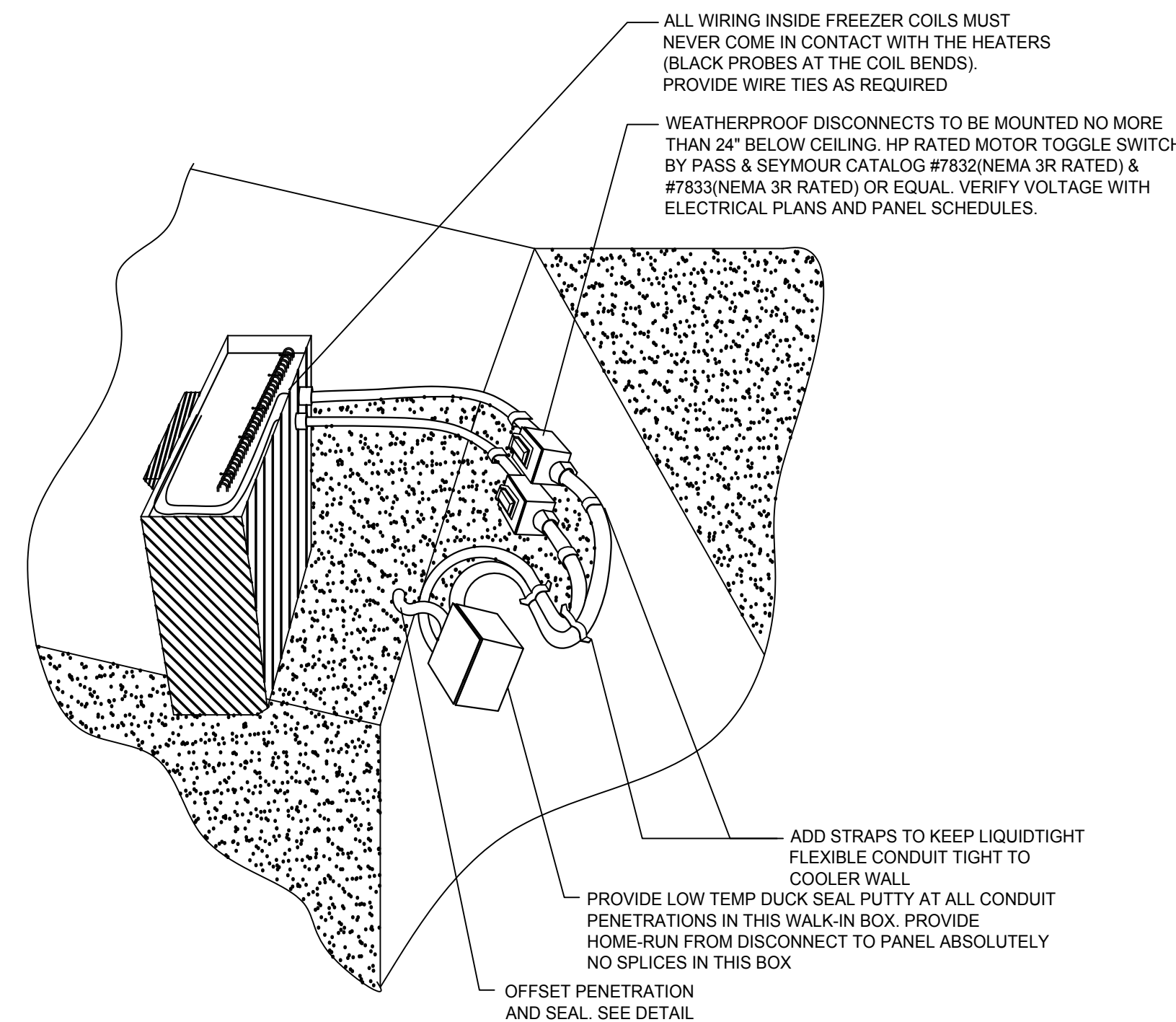
2 FRONT VIEW DETAIL
E0.03 NTS



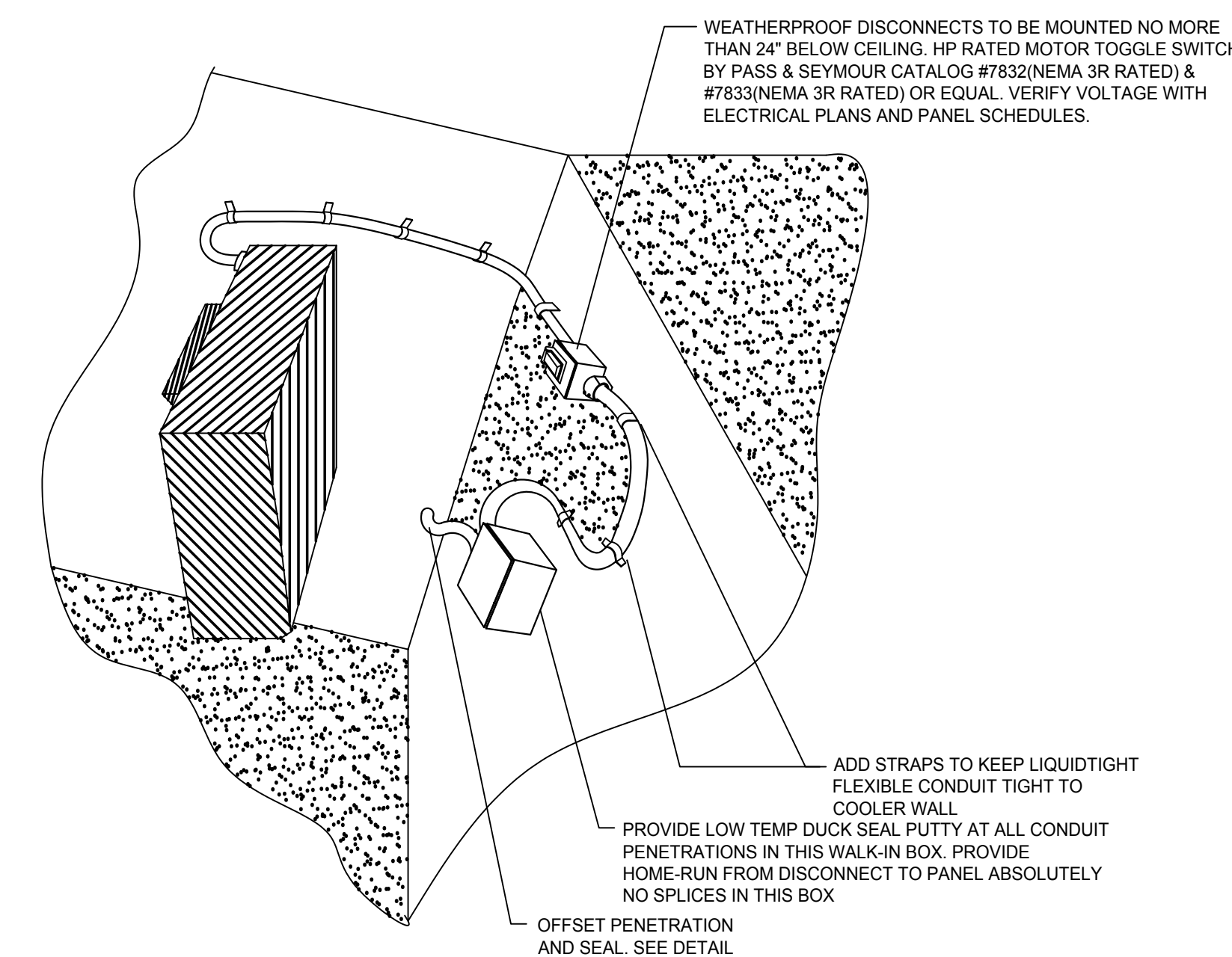
3 SIDE VIEW DETAIL
E0.03 NTS



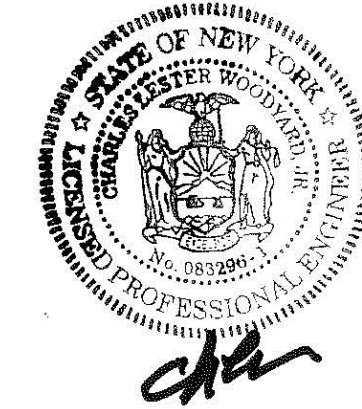
4 CONDUIT OFFSET DETAIL
E0.03 NTS



5 ISOMETRIC VIEW FREEZER
E0.03 NTS



6 ISOMETRIC VIEW COOLER
E0.03 NTS



KLS
ARCHITECT

Kurt L. Seymour, Architect
No. 14497
17719 Corporate Center, Suite 1407
Danbury, CT 06810
Phone (203) 521-5534 • Fax (203) 521-4824 • www.klsarchitects.com

Restaurant Depot / BREWSTER, NY

BREWSTER, NY 10509

DANBURY ROAD (LOT 48 | BLOCK 0002)

THESE DOCUMENTS CONTAIN INFORMATION PROPRIETARY TO ADA ARCHITECTS, INC.
UNAUTHORIZED USE OF THESE DOCUMENTS IS EXPRESSLY PROHIBITED UNLESS AGREED UPON IN WRITING.

REVISIONS

#	DATE	TYPE
1		
2		
3		
4		
5		
6		
7		
8		
9		
10		

DETAILS -
ELECTRICAL

DATE: 9/10/2020

JOB NO. 19230

E0.03

SHEET NO.