

## ABBREVIATIONS

A/C ABOVE CEILING  
AD ACCESS DOOR  
ADJ ADJUSTABLE  
AFF ABOVE FINISHED FLOOR  
AUTO AUTOMATIC  
AC AIR CONDITIONING  
AHU AIR HANDLING UNIT  
ARP ACID RESISTANCE PIPING

BAL BALANCING  
B/F BELOW FLOOR  
B/G BELOW GRADE  
BHP BRAKE HORSEPOWER  
BCO BASE CLEANOUT

CW COLD WATER (DOMESTIC)  
CO CLEANOUT

FCO FLOOR CLEANOUT  
FD FLOOR DRAIN  
FLR FLOOR  
FOB FLAT ON BOTTOM  
FOT FLAT ON TOP  
FPM FEET PER MINUTE  
FPS FEET PER SECOND  
FT FEET

G GATE  
GA GAUGE  
GPM GALLONS PER MINUTE  
GI GLOBE  
GCO GLOBE CLEANOUT

HD HUB DRAIN  
HP HORSEPOWER  
HTG HEATING  
HW HOT WATER (DOMESTIC)  
HWR HOT WATER RETURN  
HWR HOT WATER REVERSE RETURN  
HWS HOT WATER SUPPLY

ID INSIDE DIMENSION  
IN INCHES  
KW KILOWATTS  
LB POUNDS  
LWR LOOP WATER RETURN  
LWS LOOP WATER SUPPLY

MIN MINIMUM  
MAX MAXIMUM  
MFR MANUFACTURER

NC NORMALLY CLOSED  
NG NATURAL GAS  
NFGH NON-FREEZE GROUND HYDRANT  
NFWH NON-FREEZE WALL HYDRANT  
NO NORMALLY OPEN  
NOM NOMINAL

OD OVERFLOW DRAIN  
PSI POUNDS PER SQUARE INCH

RAD RADIUS  
RED REDUCER  
RS REFRIGERANT SUCTION  
RTU ROOFTOP UNIT

SAN SANITARY  
SQ SQUARE  
ST STORM

TEMP TEMPERATURE  
TYP TYPICAL

UNON UNLESS OTHERWISE NOTED  
V VENT  
VA VENT THRU ROOF  
VTR VENT THRU ROOF

WC WATER COLUMN  
WHA WATER HAMMER ARRESTOR  
WT WEIGHT  
W WASTE

## LEGEND

---	COLD WATER
---	HOT WATER
---	HOT WATER RETURN
---	VENT
---	SANITARY WASTE
---	GAS
---	WORK TO BE REMOVED
R	FLOOR DRAIN
↑	HOSE BIBB
⊗	FLOOR CLEAN-OUT
=	WALL CLEAN-OUT

## PLUMBING FIXTURE SCHEDULE

TAG	FIXTURE	CW	HW	SAN / WASTE	VENT	FLOW RATE
P-11	TROUGH SINK	1/2"	1/2"	3"	2"	

BASIS OF DESIGN: Fixtures P-11 shall be triple compartment, 14 gauge type 304 stainless steel with sound-deadening, 60" x 20" outside dimensions, 57" x 16 1/2" inside dimensions, 5 1/2" deep; J-ADA-6020-S. Faucet set shall match sink and shall be three (3) JS-46-B and a stainless steel drain, cup strainer and rubber stopper. Provide complete trim such as service stops, tailpieces and P-trap.

P-12	SINGLE COMPARTMENT SINK	1/2"	1/2"	3" INDIRECT TO FLOOR SINK	2"	
------	-------------------------	------	------	---------------------------	----	--

BASIS OF DESIGN: Fixture P-12 shall be a single compartment Advance Tabco 93-61-18 16 gauge stainless steel sink. Sink compartments shall be 18" x 24" x 12" deep with faucet punching in the center. Sink shall be supported on four (4) stainless steel tubular legs, 1 5/8" O.D. with adjustable bullet shaped feet. Faucets shall be a Advance Tabco Model K-1 with K-316-LU Wrist Handles and K-5 Lever drains.

## PLUMBING FIXTURE SCHEDULE

TAG	FIXTURE	CW	HW	SAN / WASTE	VENT	FLOW RATE
P-1	WATER CLOSET WALL MOUNT	1-1/2"	----	4"	2"	1.28 GPF

BASIS OF DESIGN: Fixtures P-1 shall be American Standard "Avalon" #2257.712, vitreous china, wall hung, siphon jet action, 1.28 GPF, elongated closet bowl with 1 1/2" top spud complete with carriers selected to match the chase size indicated. Flush valve shall be a battery powered sensor type flush valve; Sloan #G2 Optima Plus# 8111-1.28. Provide with batteries. Fixtures P-1H shall be similar, except that they shall be mounted in accordance with the handicap code.

P-2	LAVATORY (HC) WALL MOUNT	1/2"	1/2"	3"	2"	0.35 GPM
-----	--------------------------	------	------	----	----	----------

BASIS OF DESIGN: Fixtures P-2 shall be American Standard "Lucerne" #0355.012, vitreous china, wall hung lavatories with concealed carrier and anchoring screws; 8" centers faucet punching and 1 1/4" drain. Fittings shall include American Standard Insnbrook Selectronic, battery powered, electronic faucet set with 0.35 GPM aerator, four (4) "AA" batteries, mixing valve (under counter), chrome-plated tailpieces, chrome grid strainer, P-trap, supply stops and all other trim. Mixing valve shall conform to ASSE 1070 and shall limit the maximum temp to 110°F. Select faucet to match sink hole punching. Wall supply stops, drains and tailpieces shall be offset wheelchair type. Install fixtures per ADA act guidelines and ANSI A117.1.

P-3	URINAL WALL HUNG	1 1/4"	----	3"	2"	0.125 GPF
-----	------------------	--------	------	----	----	-----------

BASIS OF DESIGN: Fixture P-3 shall be American Standard "Washbrook Flowise", vitreous china, 0.125 GPF, wall hung, washout flush with integral flushing rim and 1/4" top spud. Flush valve shall be exposed, battery powered, sensor operated Sloan "G2 Optima Plus" #8186-0.13 or approved equal.

P-4	MOP SINK	3/4"	3/4"	4"	2"	2.2 GPM
-----	----------	------	------	----	----	---------

BASIS OF DESIGN: Fixtures P-4 shall be a Terrazzo floor service sink, 24" x 24" x 12" high, complete with one-piece stainless steel cap all-around top edge, cast brass 3" caulked drain with stainless steel strainer; Stern-Williams "Serviceport" Model SB-900 or approved equal. Faucet set shall be T-10-VB sink fitting complete with wall brace, hose end, vacuum breaker and chrome finish. Provide two (2) 24" x 36" 20 gauge stainless steel splash panels mounted behind sink.

P-5	DRINKING FOUNTAIN	1/2"	--	3"	2"	
-----	-------------------	------	----	----	----	--

BASIS OF DESIGN: Fixtures P-5 shall be barrier free surface mounted electric water cooler; each complete with P-trap, cane apron, and supply service stops. Electric water cooler shall deliver 8.0 GPH of 50 degrees F. water at 90 degrees F. ambient and 80 degrees F. inlet water. Cooler shall have horizontal stainless steel top. Bubble shall have flexible guard and operate between 20 and 120 psi. Separate valve and diaphragm-type automatic stream regulator shall be mounted with cabinet. Refrigeration system shall employ high efficiency, positive start compressor, non-pressurized counter-flow cooling coil with totally encapsulated insulation and shall be controlled by an integral, adjustable thermostat. Coolers shall have front pushbar water controls with raised lettering for the visually impaired. Coolers shall comply with ANSI 117.1 for both visual and motion disabilities and ADA. Cabinet shall have removable front panels and be finished in a neutral gray baked enamel. Coolers shall be certified by ARI to meet Standard 1010. Cooler shall be Elkay EZ58.

P-6	SINK	1/2"	1/2"	3"	2"	2.2 GPM
-----	------	------	------	----	----	---------

BASIS OF DESIGN: Fixtures P-6 shall be single compartment, 18 gauge stainless steel with sound-deadening, 25" x 21 1/4" outside dimensions, 21" x 15 3/4" inside dimensions, 6 1/2" deep; Elkay Model No. LRAD 2521. Faucet punching shall be 3 hole O.C. Faucet set shall match the 3 hole punching and shall be deck-mounted, lever-style chrome-plated, all brass, gooseneck faucet with operator, Chicago No. 786-E3-ON-BB and a stainless steel drain, cup strainer and rubber stopper. Provide complete trim such as service stops, tailpieces and P-trap.

P-7	DRINKING FOUNTAIN	1/2"	--	3"	2"	
-----	-------------------	------	----	----	----	--

BASIS OF DESIGN: Fixtures P-7 shall be barrier free surface mounted electric water cooler; each complete with P-trap, cane apron and supply service stops. Electric water cooler shall deliver 8.0 GPH of 50 degrees F. water at 90 degrees F. ambient and 80 degrees F. inlet water. Cooler shall have horizontal stainless steel top. Bubble shall have flexible guard and operate between 20 and 120 psi. Separate valve and diaphragm-type automatic stream regulator shall be mounted with cabinet. Refrigeration system shall employ high efficiency, positive start compressor, non-pressurized counter-flow cooling coil with totally encapsulated insulation and shall be controlled by an integral, adjustable thermostat. Coolers shall have front pushbar water controls with raised lettering for the visually impaired. Coolers shall comply with ANSI 117.1 for both visual and motion disabilities and ADA. Cabinet shall have removable front panels and be finished in a neutral gray baked enamel. Coolers shall be certified by ARI to meet Standard 1010. Cooler shall be Elkay EZ58.

P-8	HAND SINK	3/4"	3/4"	3"	2"	0.5 GPM
-----	-----------	------	------	----	----	---------

BASIS OF DESIGN: Fixtures P-8 Hand sink shall Eagle Group P1916 with pedestal, gooseneck faucet and shall be foot operated. No substitutions will be accepted.

P-9	THREE (3) BAY SINK	3/4"	3/4"	3" FROM EACH BAY INDIRECT TO FLOOR SINK	2"	2.2 GPM
-----	--------------------	------	------	---	----	---------

BASIS OF DESIGN: Fixture P-9 shall be a triple compartment Advance Tabco 93-3-54 16 gauge stainless steel sink. Sink compartments shall be 16" x 20" x 12" deep with faucet punching over center partition. Sink shall be supported on four (4) stainless steel tubular legs, 1 5/8" O.D. with adjustable bullet shaped feet. Faucets shall be a Advance Tabco Model K-117 with pre-rinse sprayer KTA-53, with K-416-LU Wrist Handles and K-5 Lever drains.

P-10	EMERGENCY EYE WASH	3/4"	3/4"	3"	2"	2.2 GPM
------	--------------------	------	------	----	----	---------

BASIS OF DESIGN: Fixtures P-10 shall be an emergency eye/face wash unit, Haws Model# 7260b-7270B with a wall mounted bracket. Emergency face/eye wash shall be tested and comply with ANSI Z258.1. Provide with powers ES-150 mixing valve set at 85°F.

MV-1	MIXING VALVE	1/2	1/2"			
------	--------------	-----	------	--	--	--

BASIS OF DESIGN: MIXING VALVE SHALL BE POWERS MODEL #LFe480. MIXING VALVE SHALL BE LOCATED UNDER SINK AND SET TO 110°F. PROVIDE MIXING VALVE AT ALL HOSE REELS (HR-1) AND HAND SINKS (P-8). Mixing valve shall conform to ASSE to provide a maximum temperature of 110°F.

HR-1	HOSE REEL	1/2"	1/2"			
------	-----------	------	------	--	--	--

BASIS OF DESIGN: Hose reel shall be Reelcraft 7670 ELP with 70' 1/4" I.D. hose. Provide with T&S BRASS B-107 spray valve, and MV522 water gun. No substitutions will be accepted.

HB	HOSE BIBB	1/2"	--			
----	-----------	------	----	--	--	--

BASIS OF DESIGN: The hose bibbs (HB) shall be complete with vacuum breaker and vandal resistant key operated handle, loose key, JR Smith model #5618.

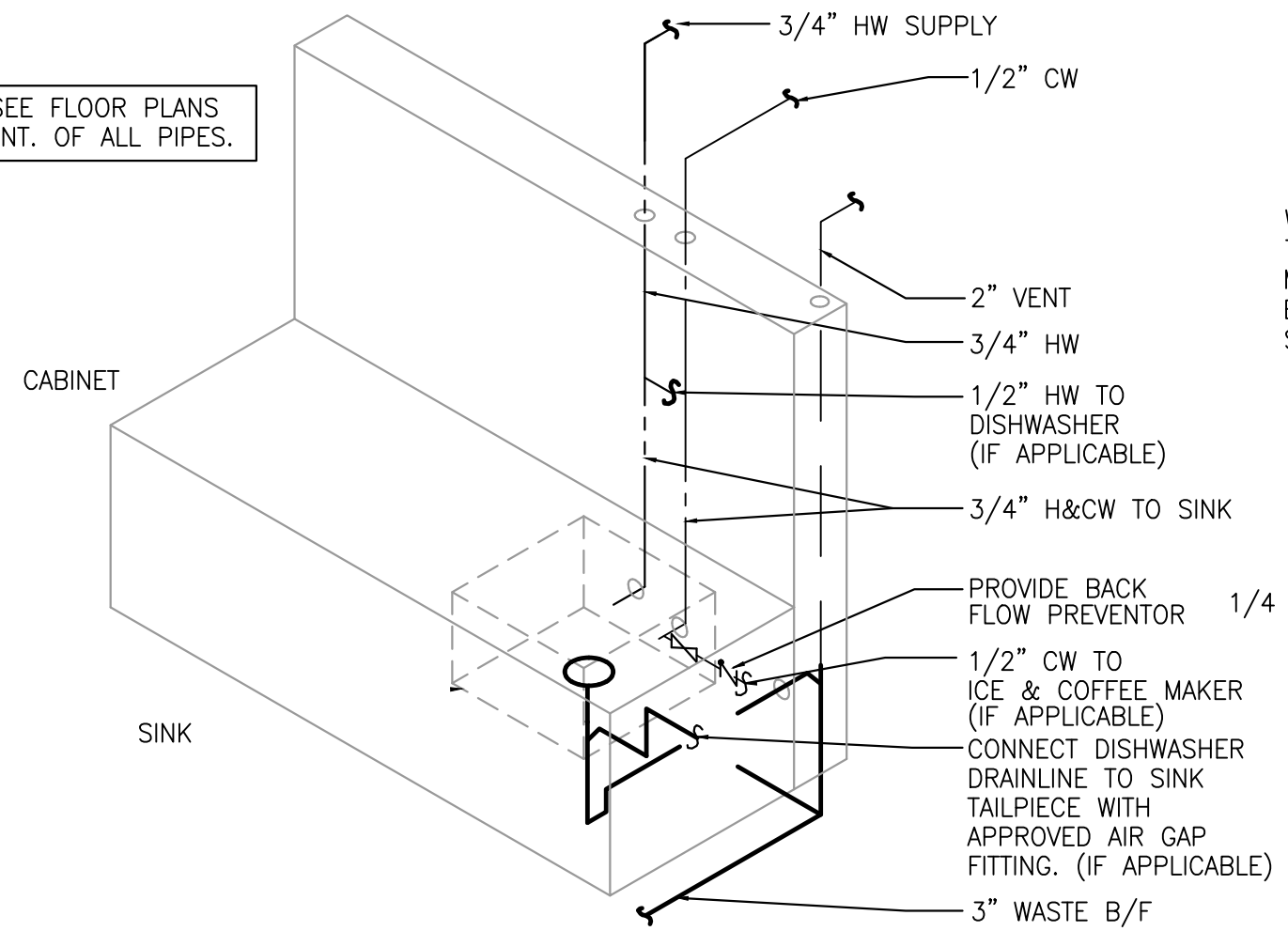
NFWH	NON FREEZE WALL HYDRANT	1/2"	--			
------	-------------------------	------	----	--	--	--

BASIS OF DESIGN: Non-freeze wall hydrants (NFWH) shall be non-freeze, bronze box type with vacuum breaker, loose key and wall clamp. Finish shall be rough bronze. Wall hydrants shall be Smith 5509QTPB or approved equal by Josam or Zurn.

FD-1	FLOOR DRAINS IN MEAT CAGES	1/2" TP	--	3"	2"	Basis of Design: 7" round floor drain. Zurn Z415-TS with 3" outlet.
FD-2	FLOOR DRAINS IN REST ROOMS & JAN CLOSETS	1/2" TP	--	3"	2"	Basis of Design: 7" round floor drain. Zurn Z415-N7-P.
FD-3	FLOOR DRAIN	1/2" TP	--	3"	2"	Basis of Design: 9" round floor drain. Zurn Z513-P-Y.
FD-4	FLOOR DRAIN	1/2" TP	--	3"	2"	Basis of Design: Square floor drain. Zurn Z610-DG-T. Floor drain shall be traffic rated.
FS-1	FLOOR SINK	1/2" TP	--	3"	2"	Basis of Design: 12" round floor sink. Zurn Z512-T-Y with sediment bucket & fill grate.
FS-2	FLOOR SINK	1/2" TP	--	3"	2"	Basis of Design: 12" square floor sink. Zurn Z512-PH-T-Y with sediment bucket & 3/4" grate.
HD	HUB DRAIN	1/2" TP	--	3"	2"	
FCO	FLOOR CLEAN OUT	--	--	3"	--	Basis of Design: round floor cleanout w/ flashing clamp JR Smith 4220. No substitutions will be accepted.
TRENCH DRAIN	TRENCH DRAIN	1/2" TP	--	3"	2"	Basis of Design: Pre-sloped trench drain Mfab model# T1400-DG-HD, provide with sediment bucket & connection for 3" drain line. Provide with H-20 loading grate rated for traffic.

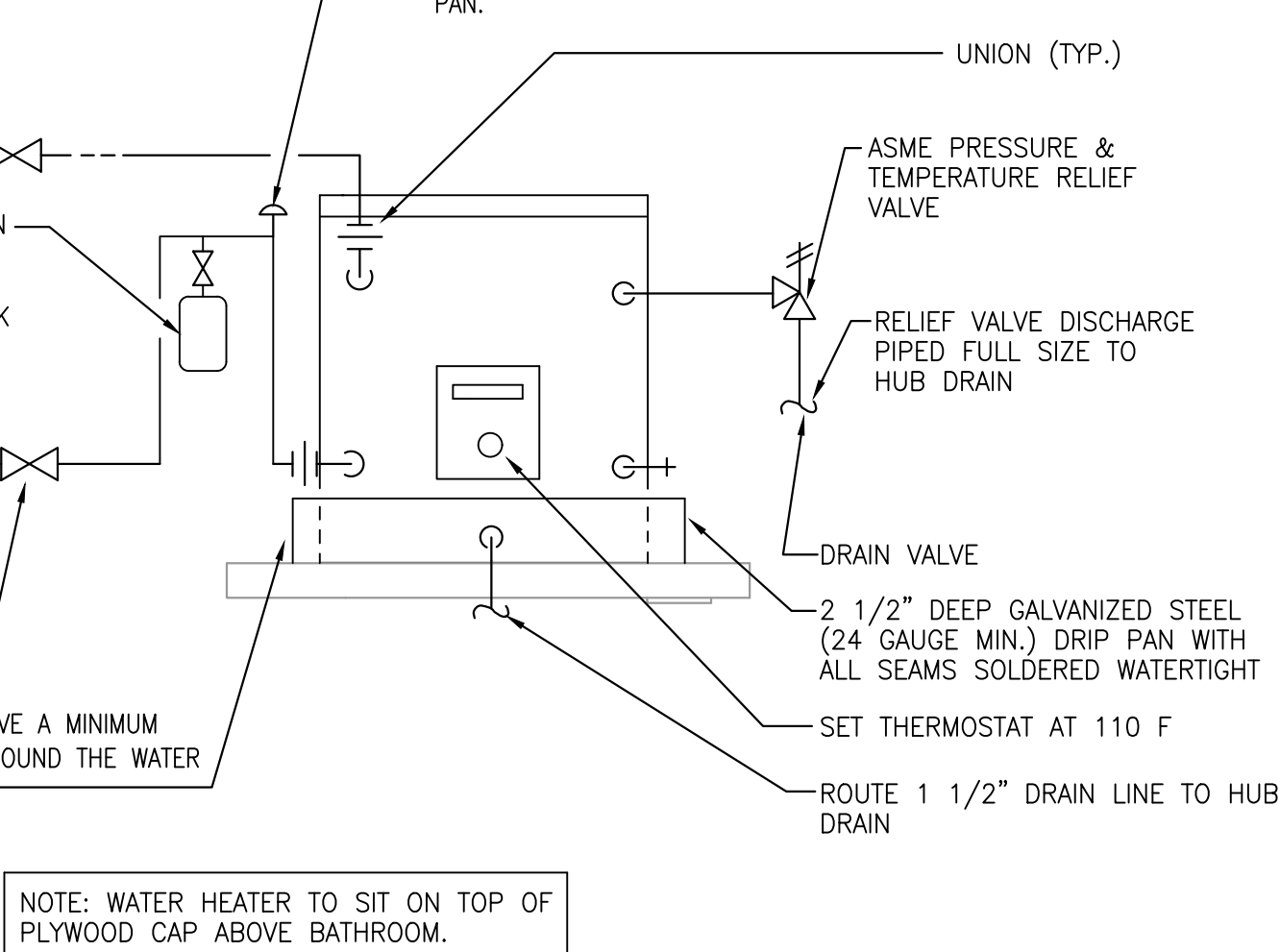
TP: PROVIDE WITH 1/2" TRAP PRIMER

NOTE: SEE FLOOR PLANS FOR CONT. OF ALL PIPES.



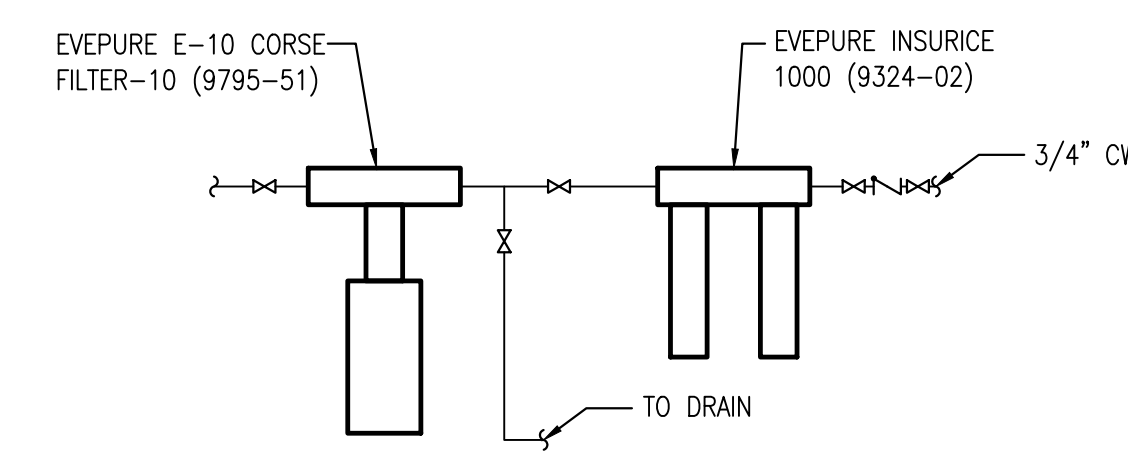
## 1 BREAK SINK DETAIL

P7.1 NO SCALE



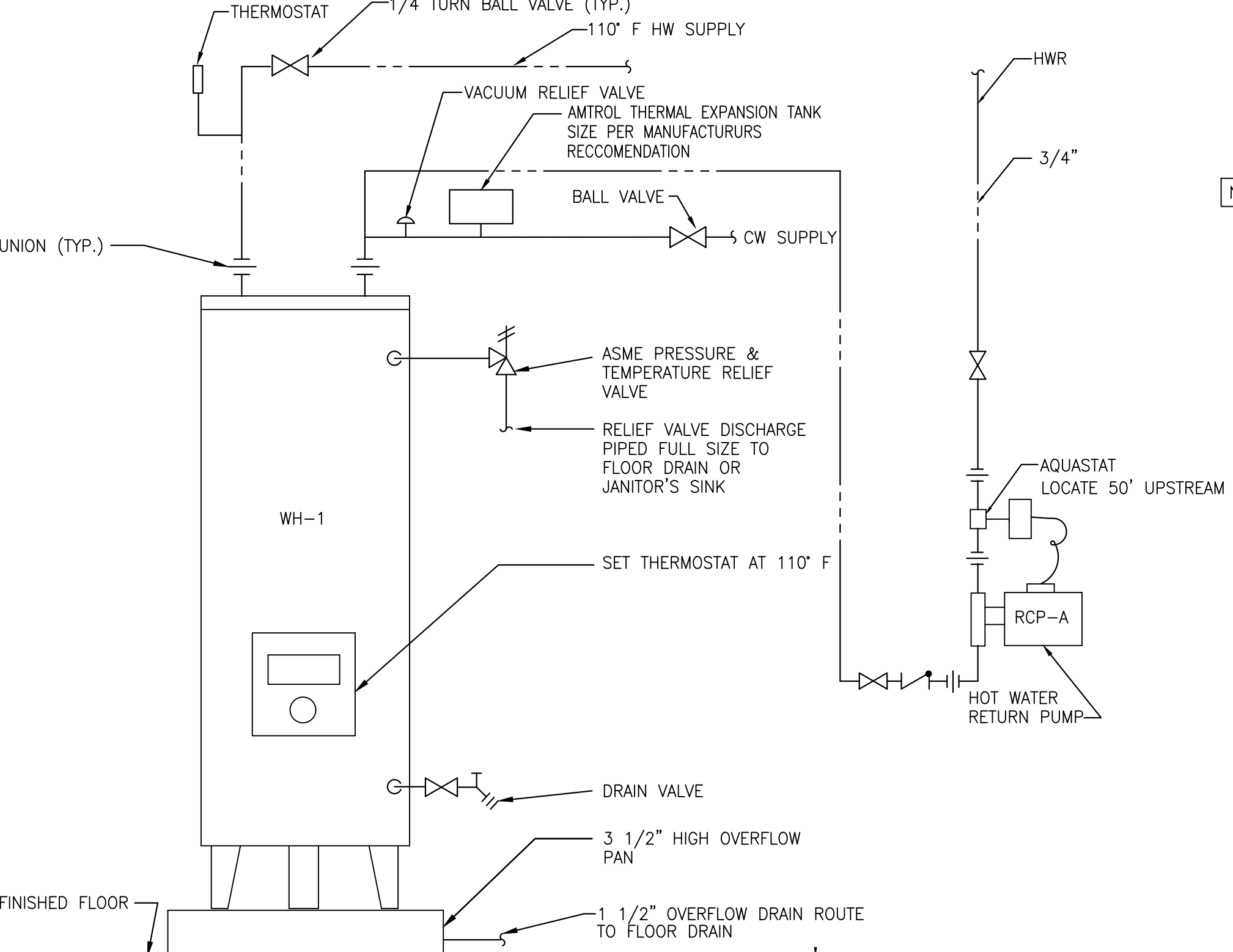
## 2 WATER HEATER DETAIL

P7.1 NO SCALE



## 4 ICE MACHINE WATER SUPPLY DETAIL

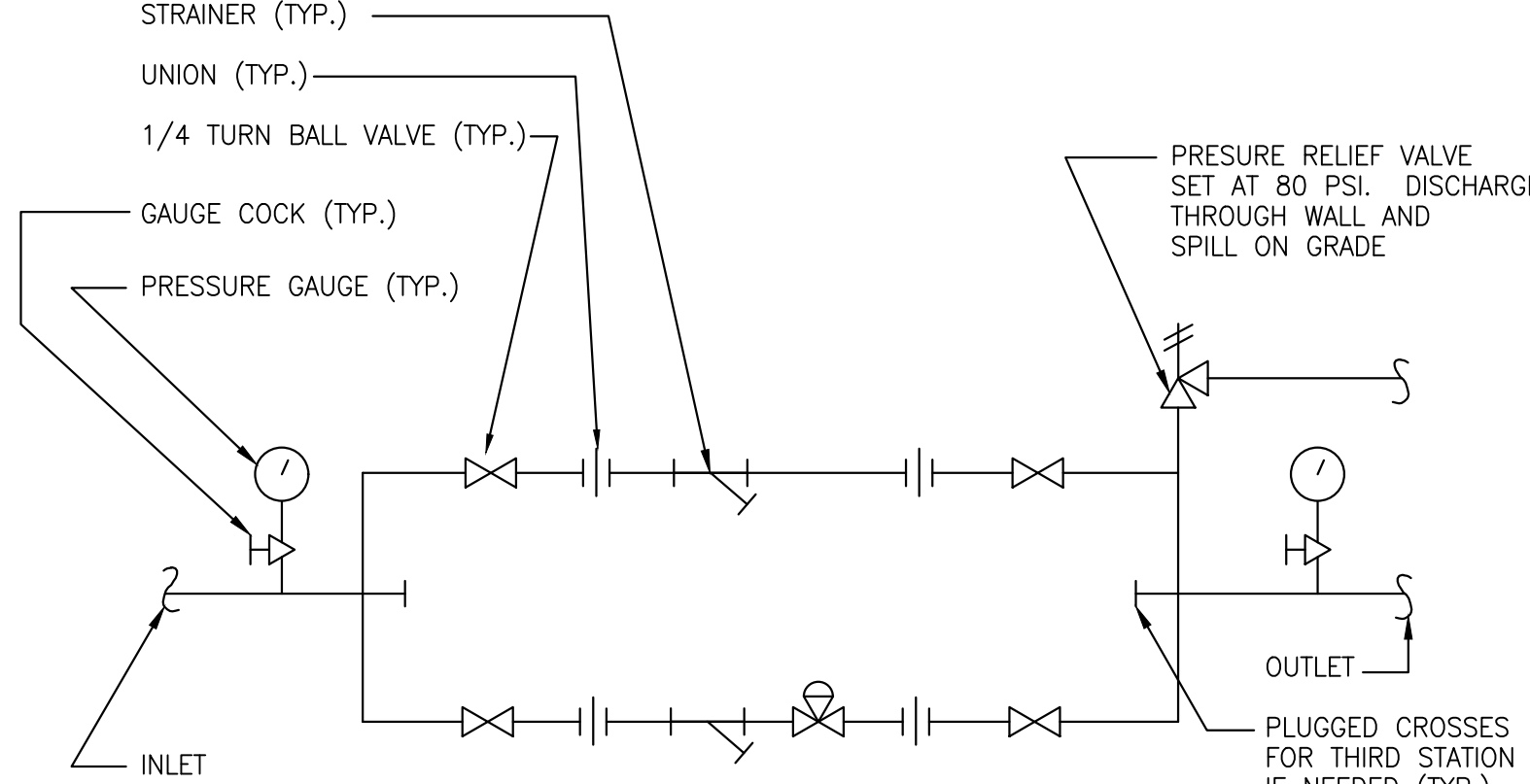
P7.1 NO SCALE



## 3 WATER HEATER DETAIL

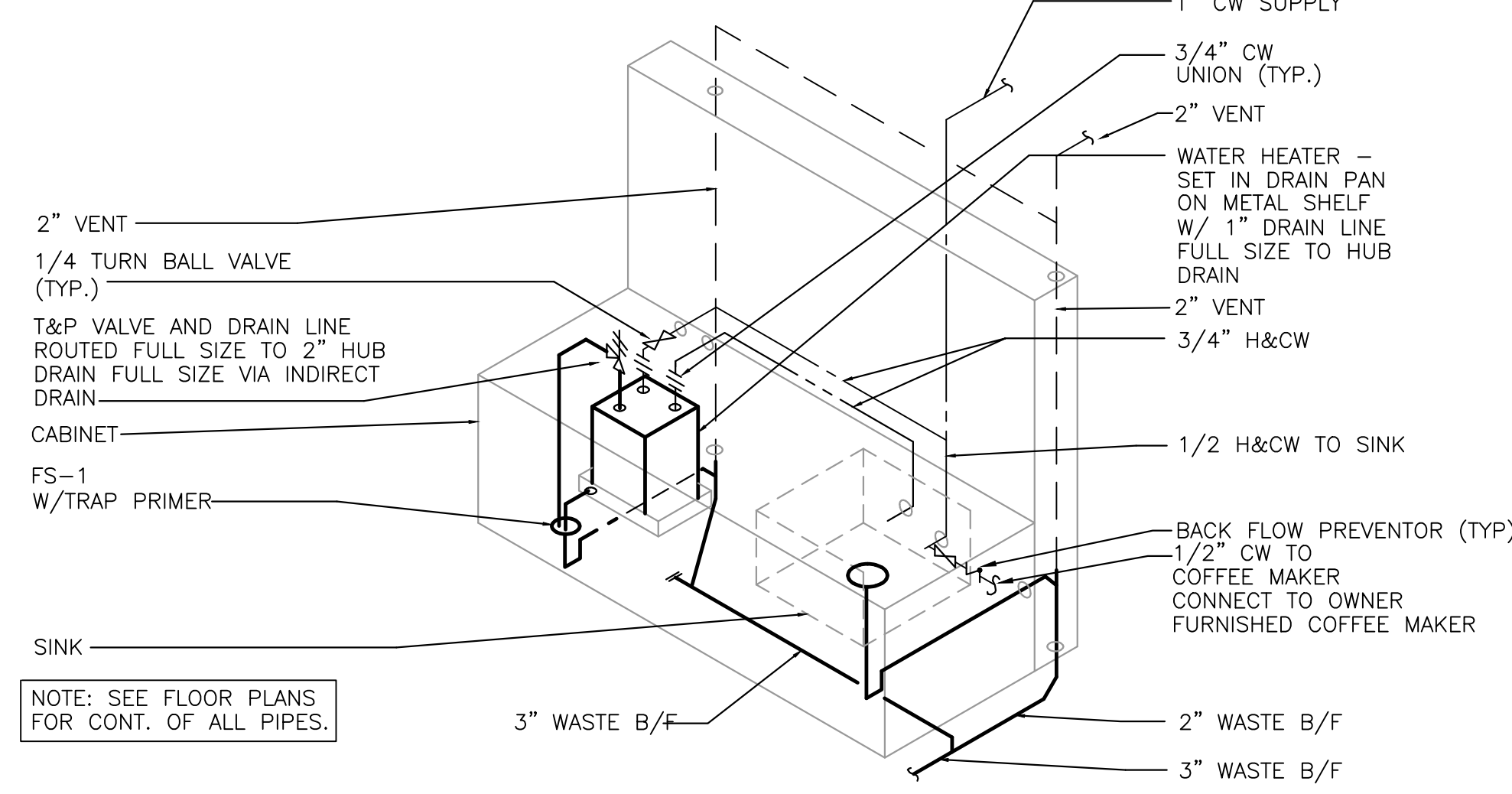
P7.1 NO SCALE

\*\* LOCATE AQUASTAT AT A MINIMUM OF 50'-0" FROM WATER HEATER.



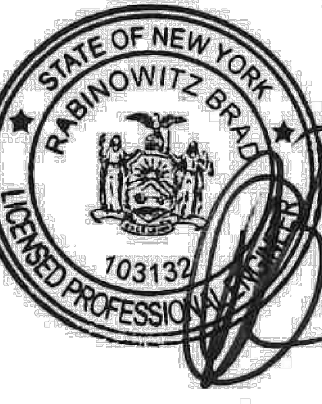
## 5 PRESSURE REDUCING STATION

P7.1 NO SCALE



## 6 UNDERCOUNTER WATER HEATER DETAIL

P7.1 NO SCALE



**KLS**  
ARCHITECT

**Restaurant Depot / BREWSTER, NY**

BREWSTER NY 10509

Robert L. Schmitz, Architect  
17710 Dated Avenue, Lakewood, Ohio 44107  
Phone (216) 521-5151 • Fax (216) 521-4804 • www.ksarchitects.cc

THESE DOCUMENTS CONTAIN INFORMATION PROPRIETARY TO ADA ARCHITECTS, INC.  
UNAUTHORIZED USE OF THESE DOCUMENTS IS EXPRESSLY PROHIBITED UNLESS AGREED UPON IN WRITING.

## REVISIONS

NO.	DATE	DESCRIPTION
1		
2		
3		
4		
5		
6		
7		
8		
9		
10		

## ABBREVIATIONS, DETAILS, AND SCHEDULES-PLUMBING

DATE: 9/10/2020  
JOB NO. 19230

**P7.1**  
SHEET NO.